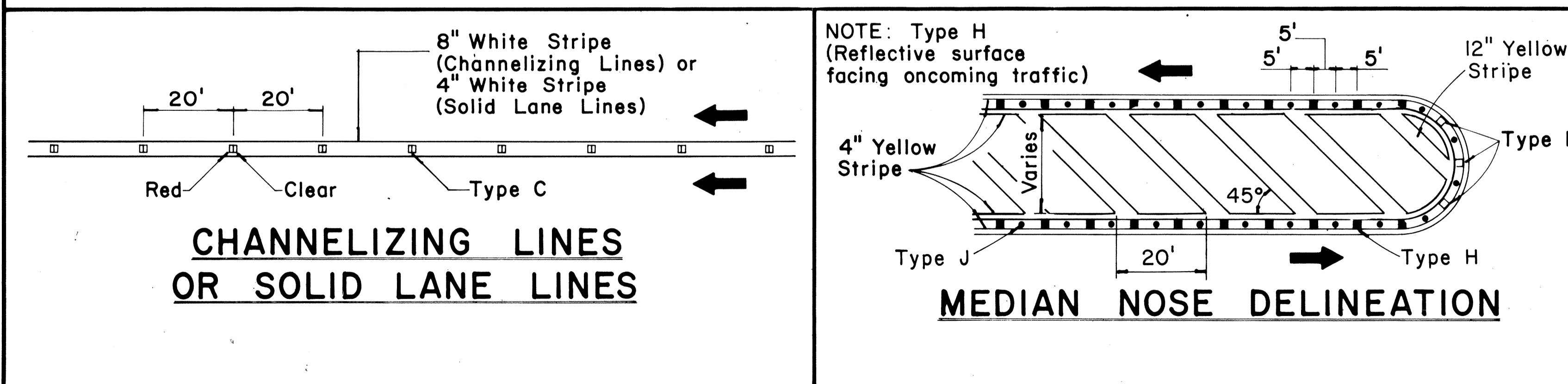
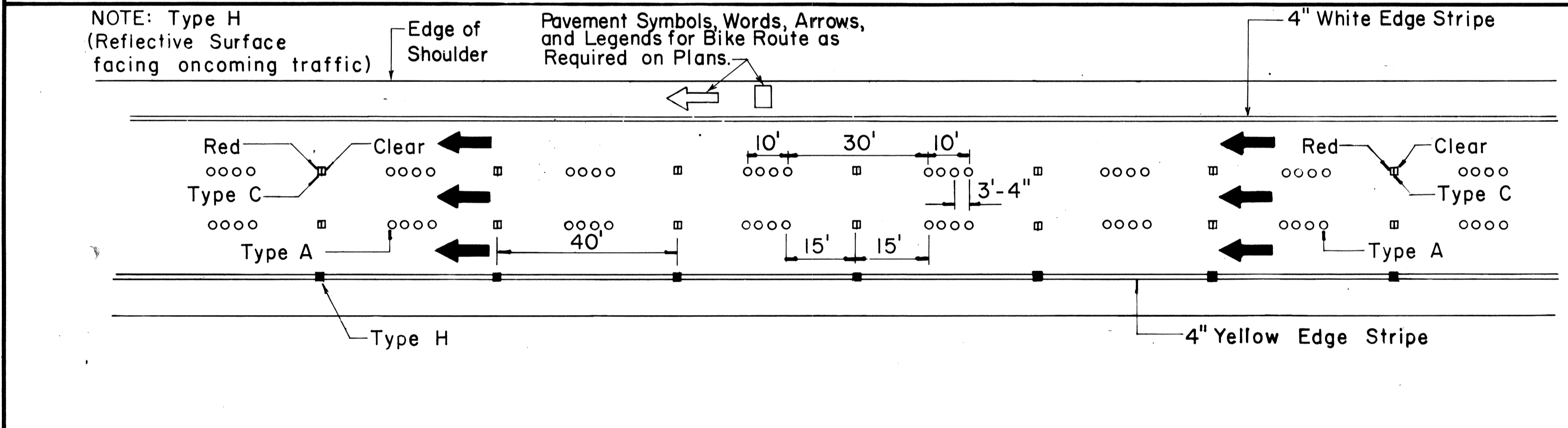
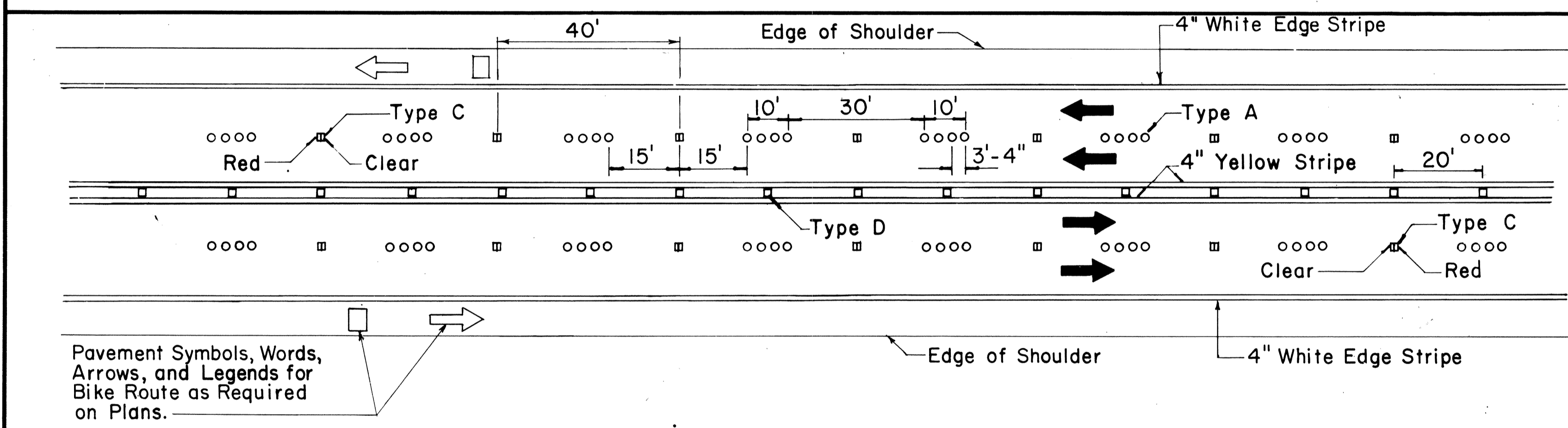
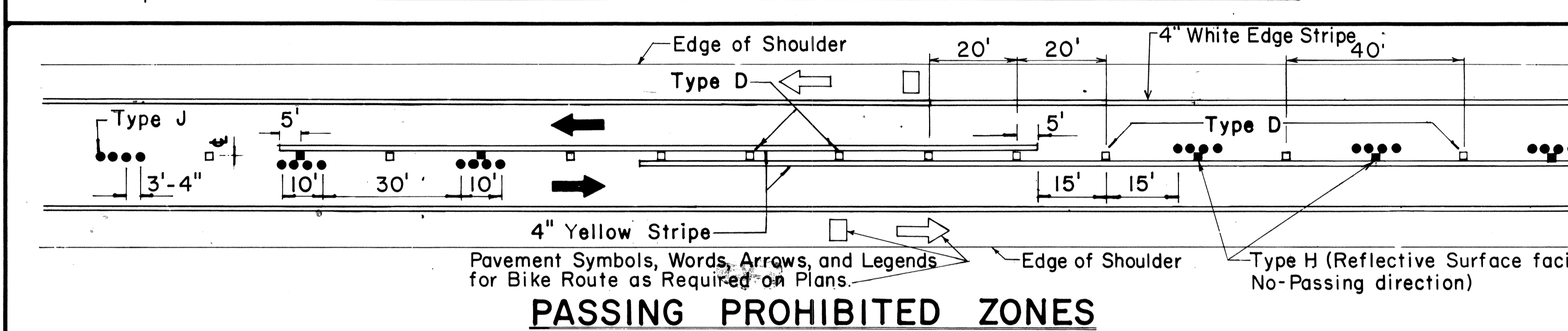
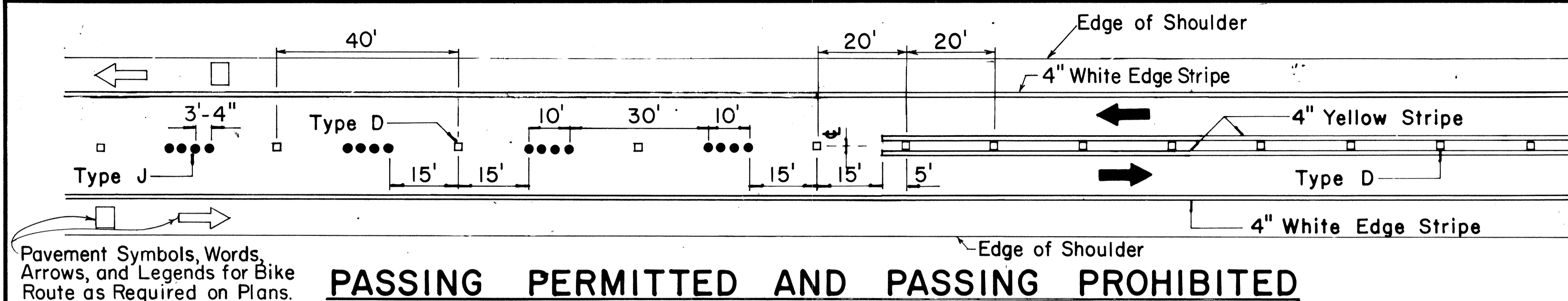


FED. ROAD DIST. NO.	STATE	PROJ. NO.	FISCAL YEAR	SHEET NO.	TOTAL SHEETS
HAWAII	HAW.	83 DEF-01-82M	1982	15	17

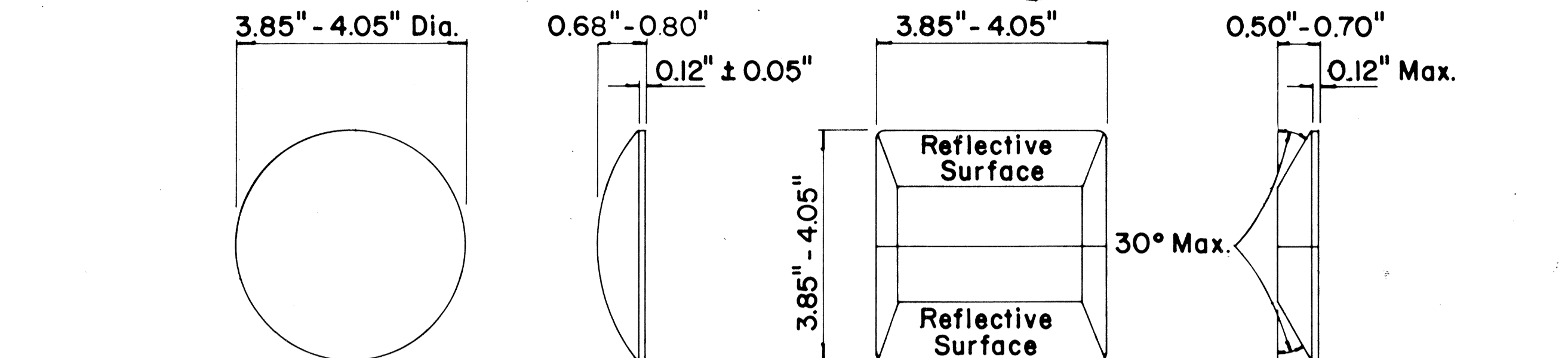


TWO - LANE

MULTI - LANE

DIVIDED HIGHWAY AND FREEWAY

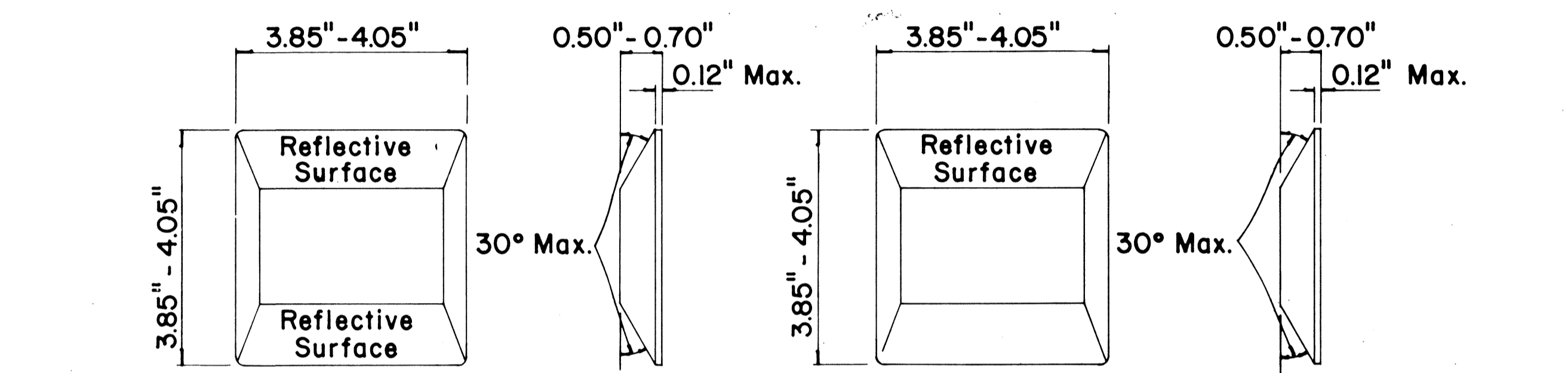
MISCELLANEOUS



TYPE A
NON - REFLECTIVE WHITE MARKER

TYPE C
RED - CLEAR REFLECTIVE MARKER

TYPE J
NON - REFLECTIVE YELLOW MARKER



TYPE D
TWO - WAY YELLOW REFLECTIVE MARKER

TYPE H
ONE - WAY YELLOW REFLECTIVE MARKER

GENERAL NOTES

- Pavement marking and striping shall conform to the latest "Manual on Uniform Traffic Control Devices for Streets and Highways," and as amended.
- Layout and installation of pavement marking and striping shall be done by the Contractor. The Contractor shall check the layouts with the Engineer prior to performing work.

LEGEND

- Type A
- Type C
- Type D
- Type H
- Type J

APPROVAL RECOMMENDED:
Erich Tanaka 7/21/78
 TRAFFIC ENGINEER DATE

APPROVED:
Harold J. Zalewski 1/24/78
 ASSISTANT CHIEF, ENGINEERING DATE

No.	REVISION	APPROVED BY	DATE
1	Supersedes DT 300 approved 11/18/71.	H.f.	1/24/78
2	Delete Type A Markers from Bike Route Delineation.	H.f.	10/15/79

STATE OF HAWAII
 DEPARTMENT OF TRANSPORTATION
 HIGHWAYS DIVISION

STANDARD DETAILS
RAISED PAVEMENT MARKERS
AND STRIPING

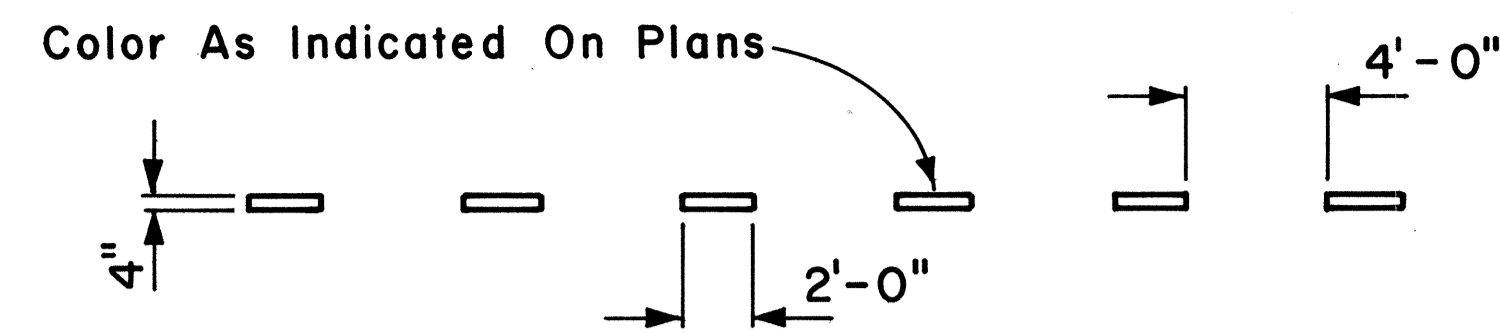
Not to Scale July 1978
 SHEET No. OF SHEETS DT 300

DATE
SURVEY PLOTTED BY
DRAWN BY
TRACED BY
QUANTITIES BY
CHECKED BY
ORIGINAL PLAN
NOTE BOOK
No.

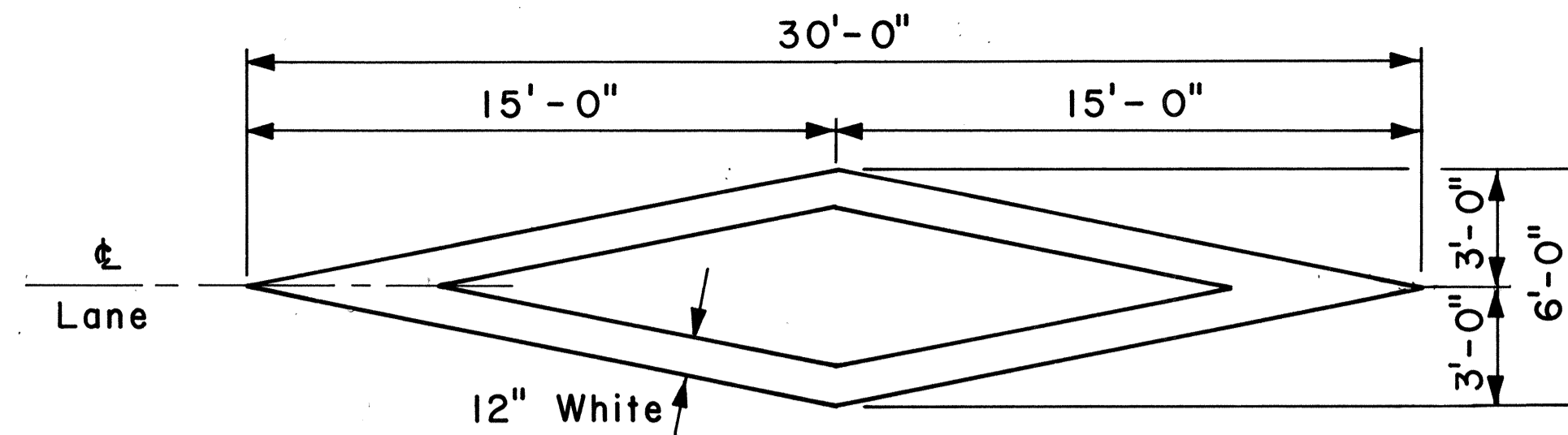
FED. ROAD DIST. NO.	STATE	PROJ. NO.	FISCAL YEAR	SHEET NO.	TOTAL SHEETS
HAWAII	HAW.	83 DEF-01-82M	1982	16	17

GENERAL NOTES:

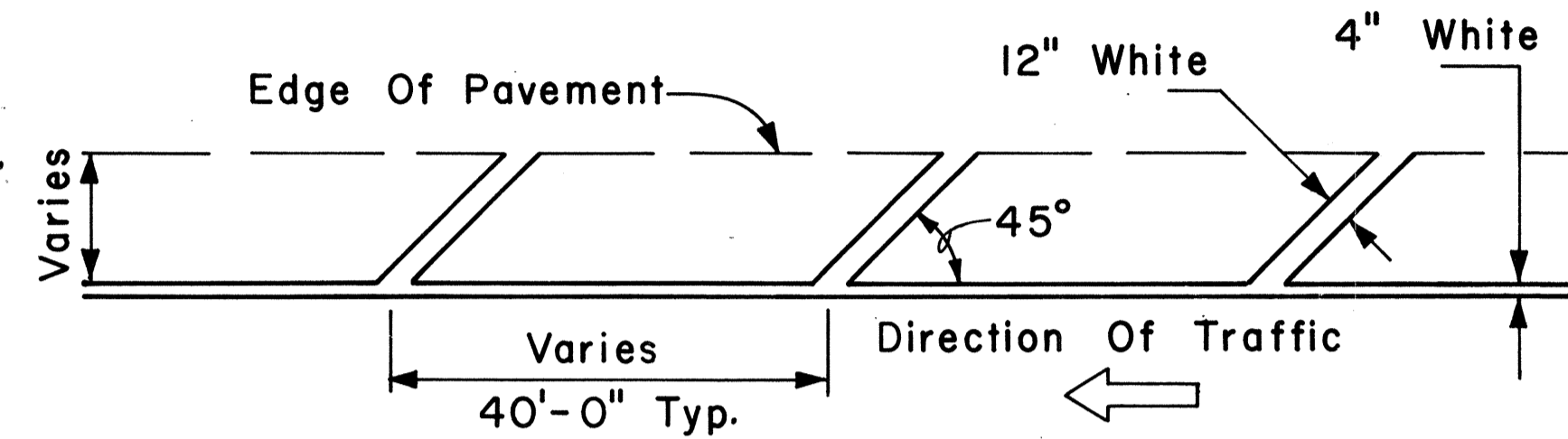
1. Pavement marking and striping shall conform to the latest edition of the "Manual on Uniform Traffic Control Devices for Streets and Highways," by the FHWA, and as amended.
2. Layout of pavement markings and striping shall be done by the Contractor. The Contractor shall check layout of markings and striping with the Engineer prior to performing work.
3. For additional pavement marking details, see sheet DT 300.



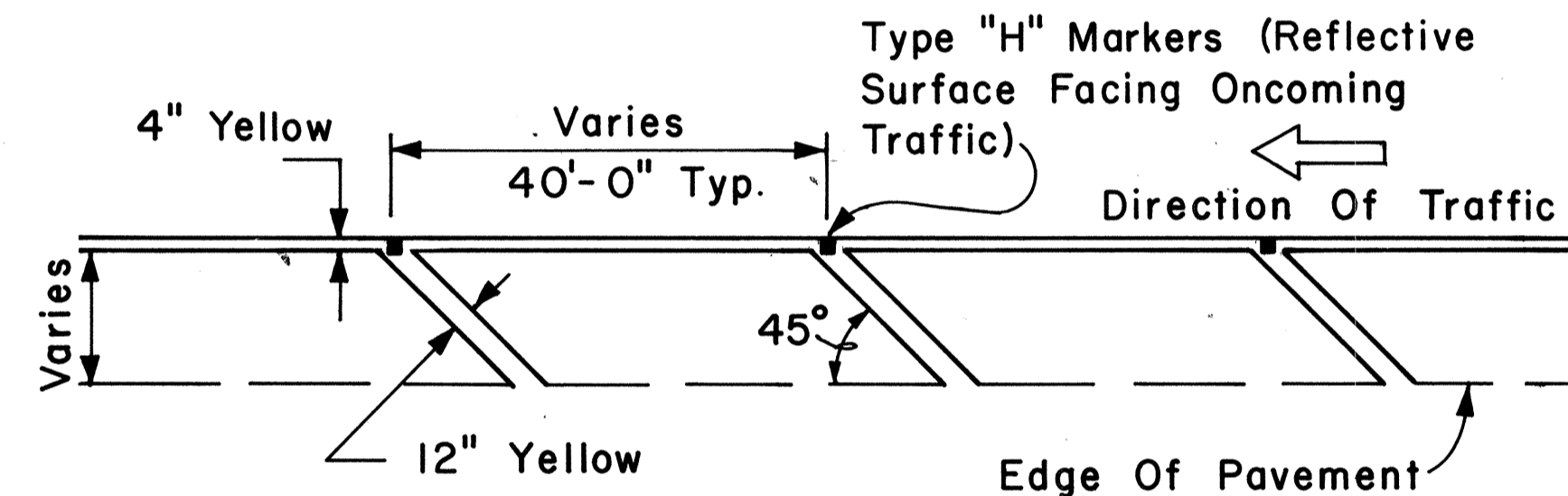
4" GUIDE LINE



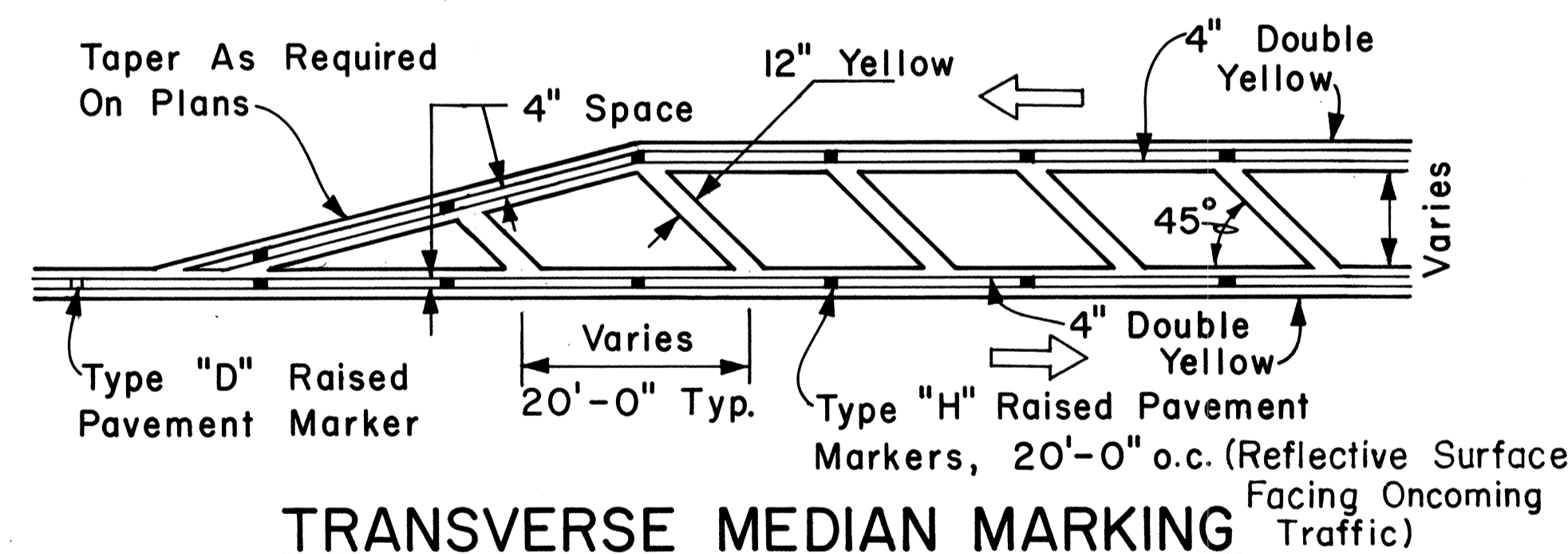
PAVEMENT DIAMOND



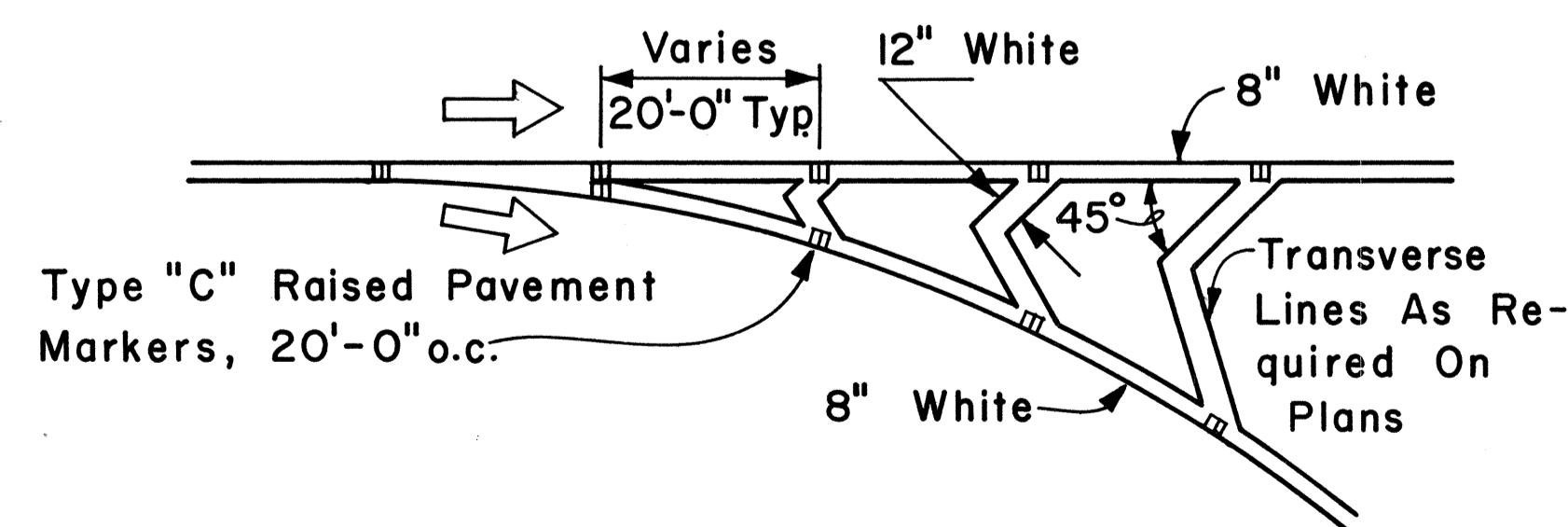
TRANSVERSE RIGHT SHOULDER MARKING



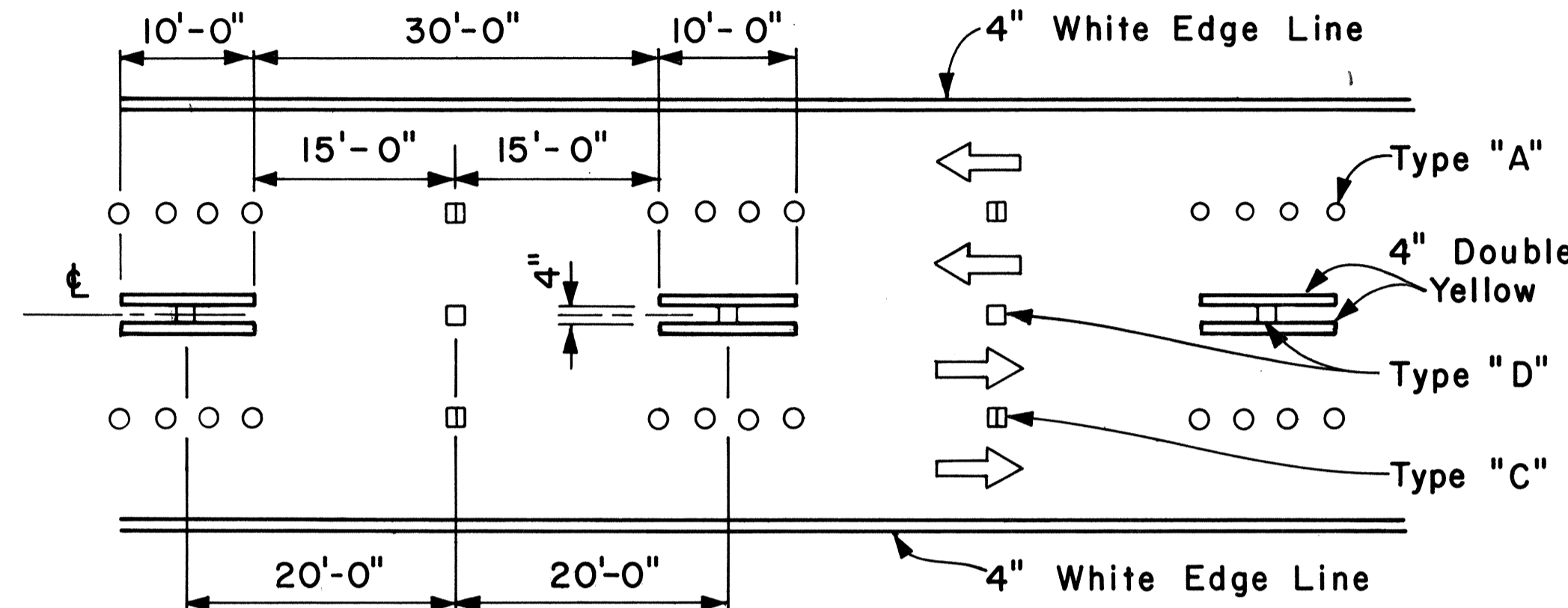
TRANSVERSE LEFT SHOULDER MARKING



TRANSVERSE MEDIAN MARKING

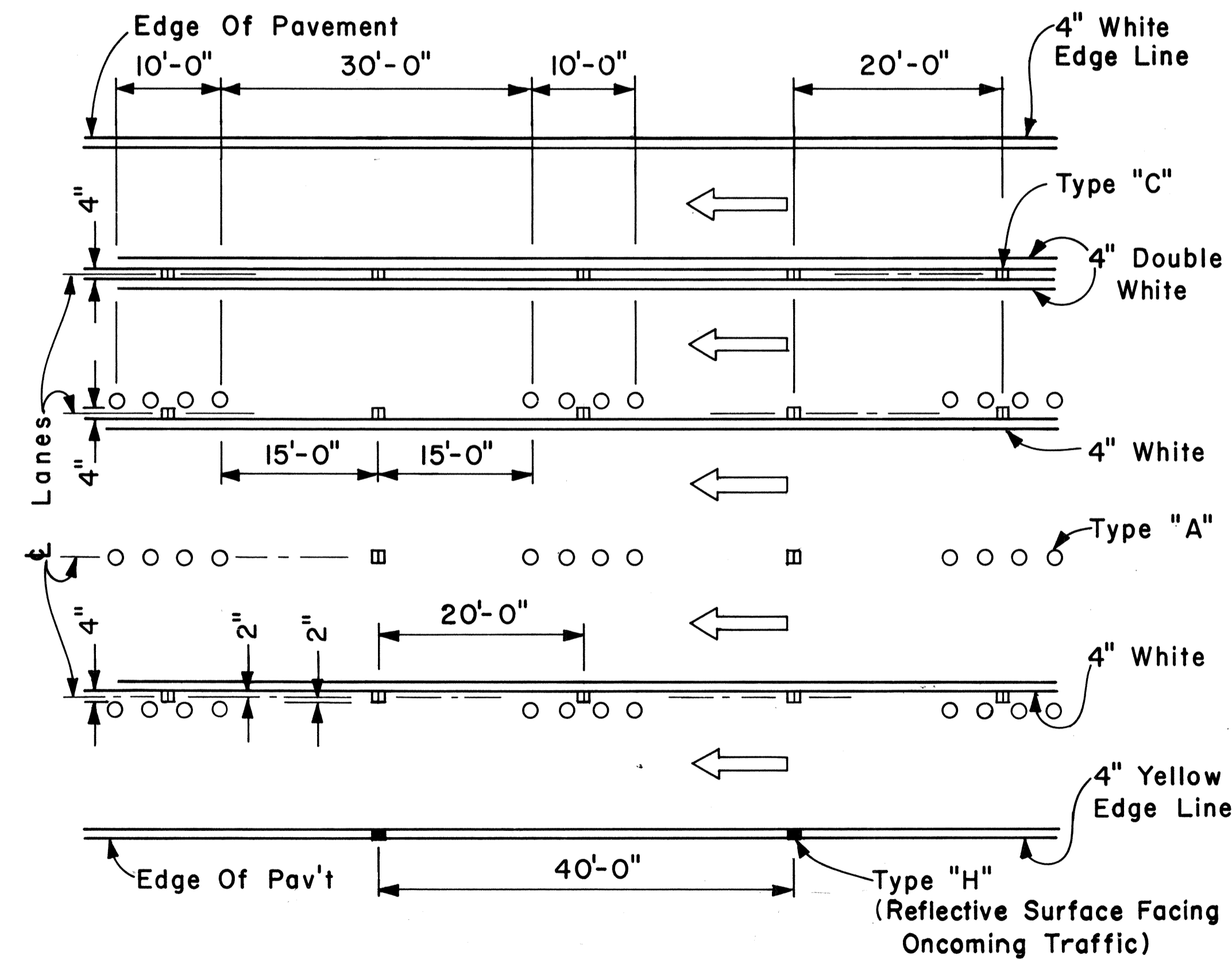


CHANNELIZING ISLAND



NOTE: Traffic Cone Usage Required.

MULTI-LANE REVERSIBLE LANES



MULTI-LANE LANE CHANGE RESTRICTION ZONES

APPROVAL RECOMMENDED:
E. J. Tanaka 5/2/78
TRAFFIC ENGINEER DATE

APPROVED:
Harold Z. Zafra 5/3/78
ASSISTANT CHIEF, ENGINEERING DATE

NO.	REVISION	APPROVED BY	DATE

STATE OF HAWAII
DEPARTMENT OF TRANSPORTATION
LAND TRANSPORTATION FACILITIES DIVISION

STANDARD DETAILS

MISCELLANEOUS
PAVEMENT MARKINGS

Scale: Not to Scale Date: April, 1978

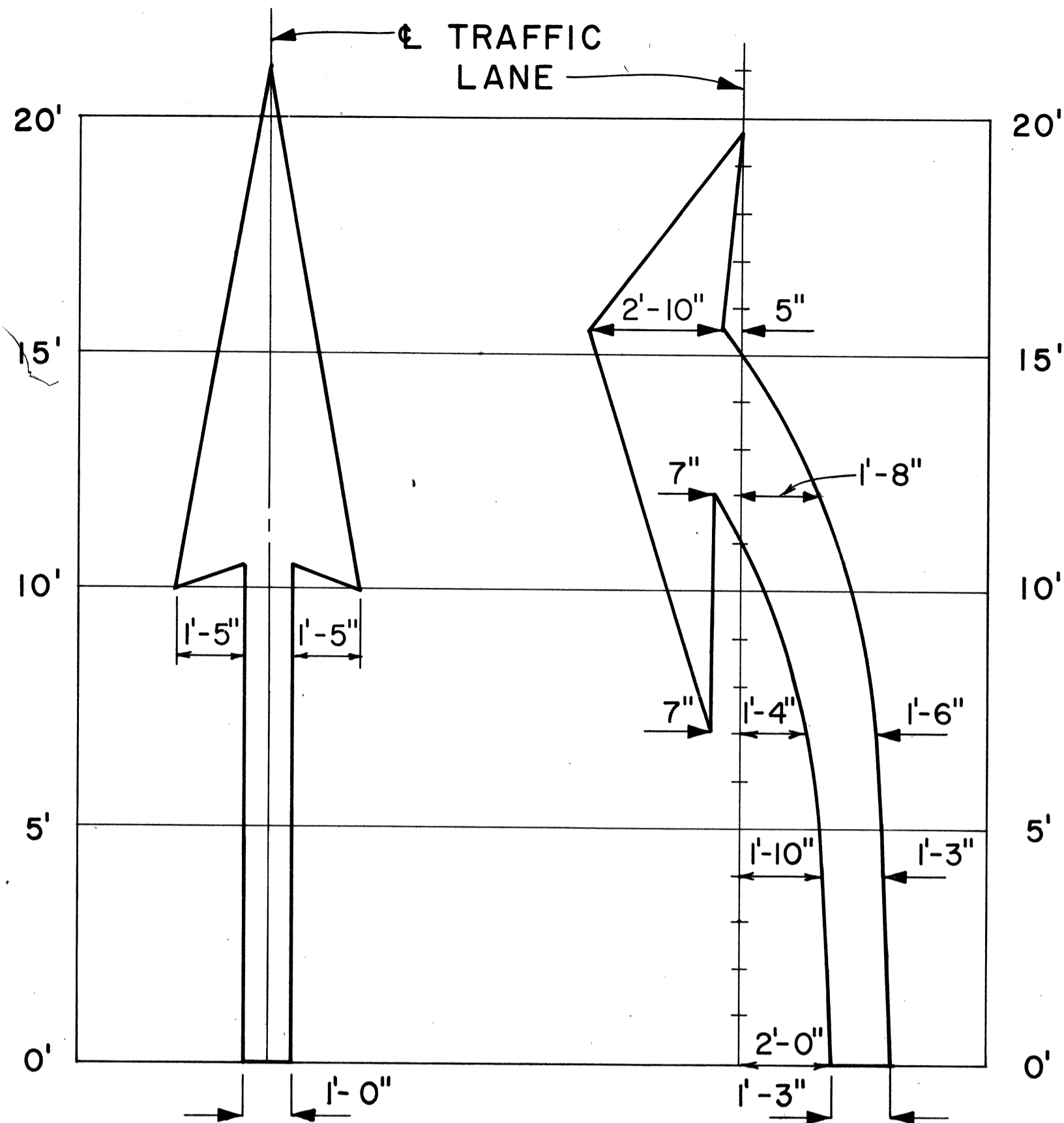
SHEET NO. OF SHEETS DT 302

SURVEY PLOTTED BY	DATE
DRAWN BY	
DESIGNED BY	
QUANTITIES BY	
CHECKED BY	
ORIGINAL PLAN	
NOTE BOOK	
NO.	

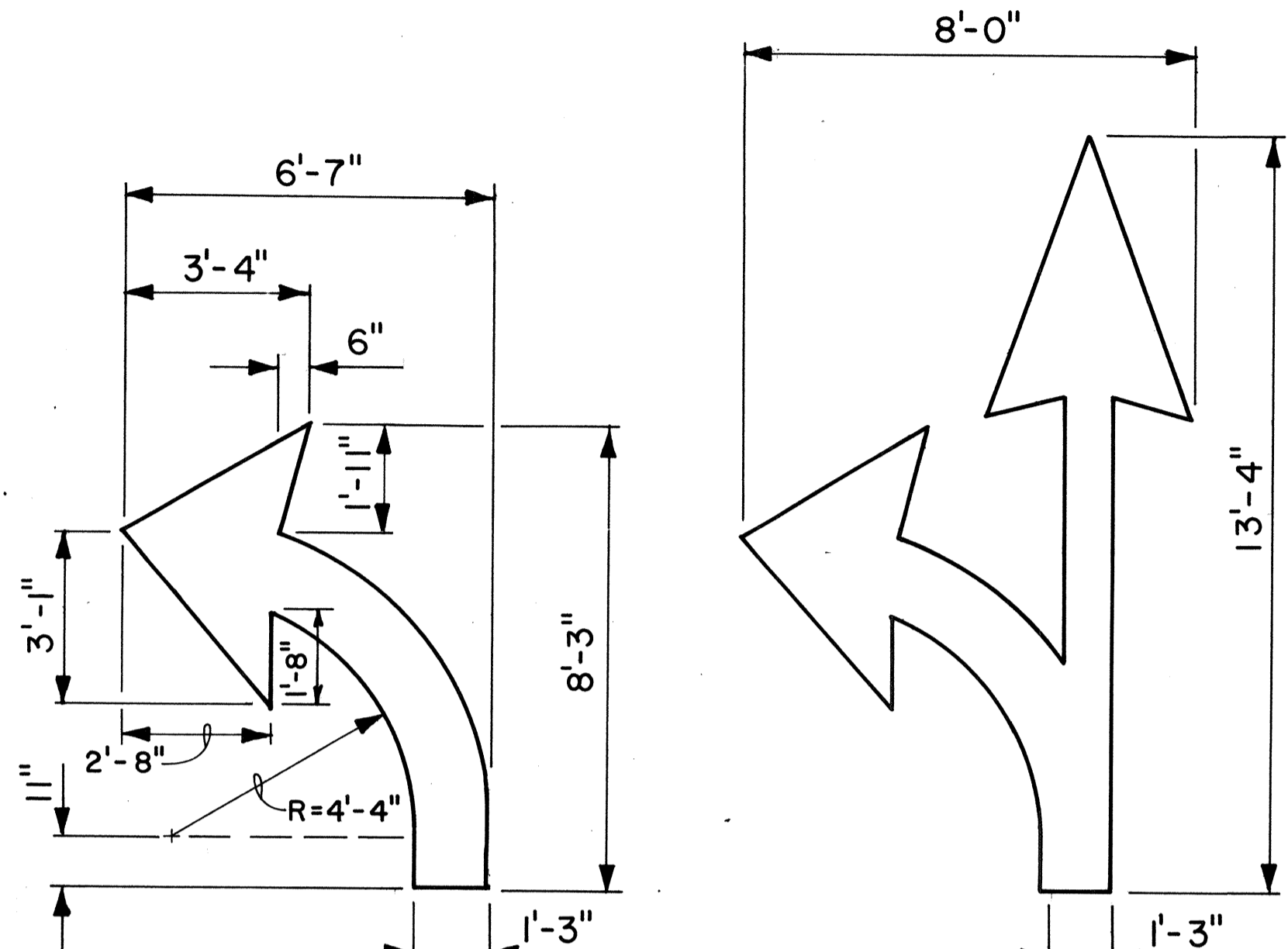
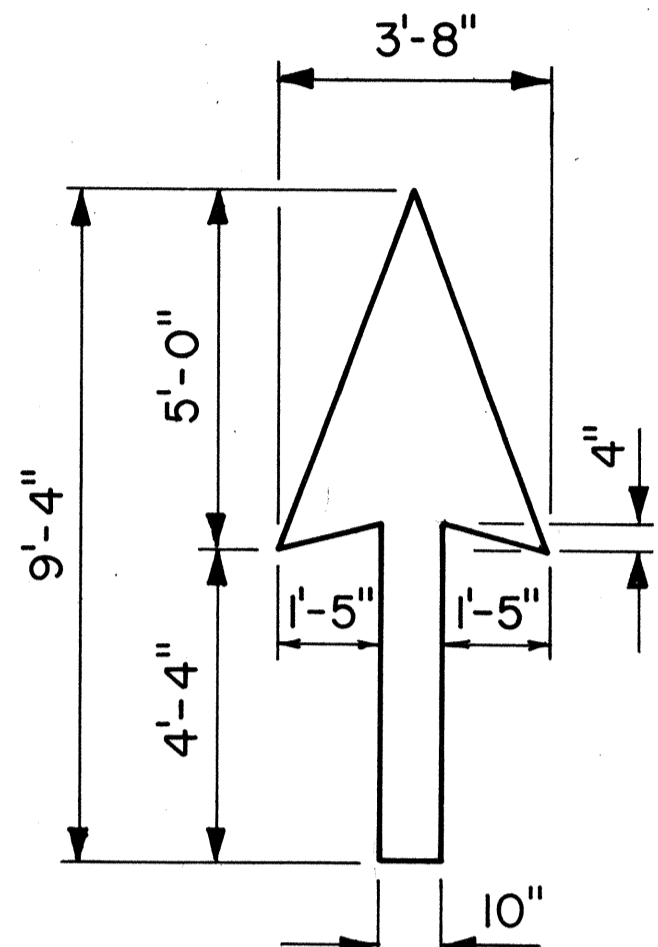
FED. ROAD DIST. NO.	STATE	PROJ. NO.	FISCAL YEAR	SHEET NO.	TOTAL SHEETS
HAWAII	HAW.	83 DEF-01-82M	1982	17	17

GENERAL NOTES:

1. Pavement marking and striping shall conform to the latest edition of the "Manual on Uniform Traffic Control Devices for Streets and Highways," by the FHWA, and as amended.
2. Layout of pavement markings and striping shall be done by the Contractor. The Contractor shall check layout of markings and striping with the Engineer prior to performing work.
3. For additional pavement marking details, see sheet DT 300.



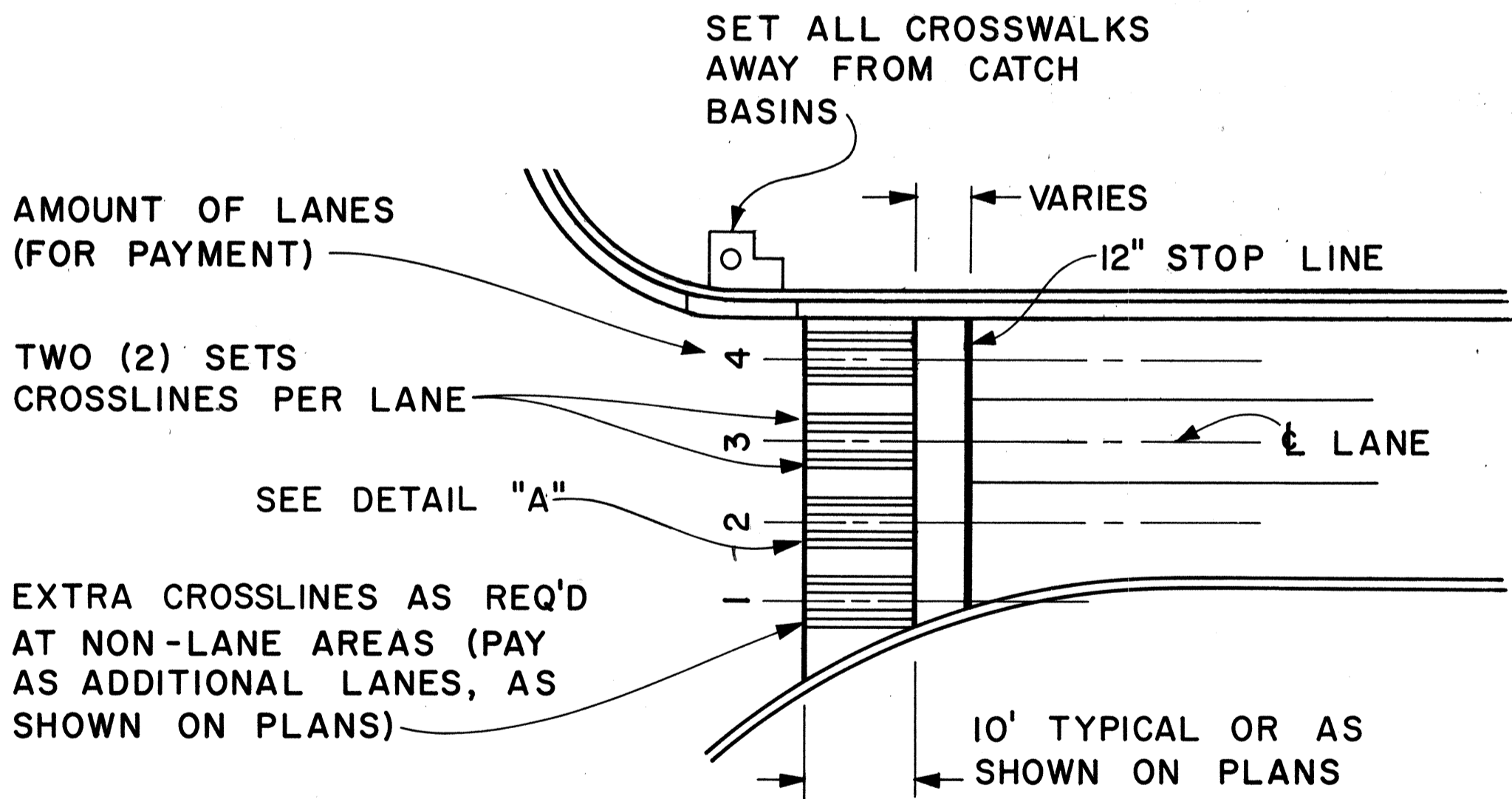
ELONGATED



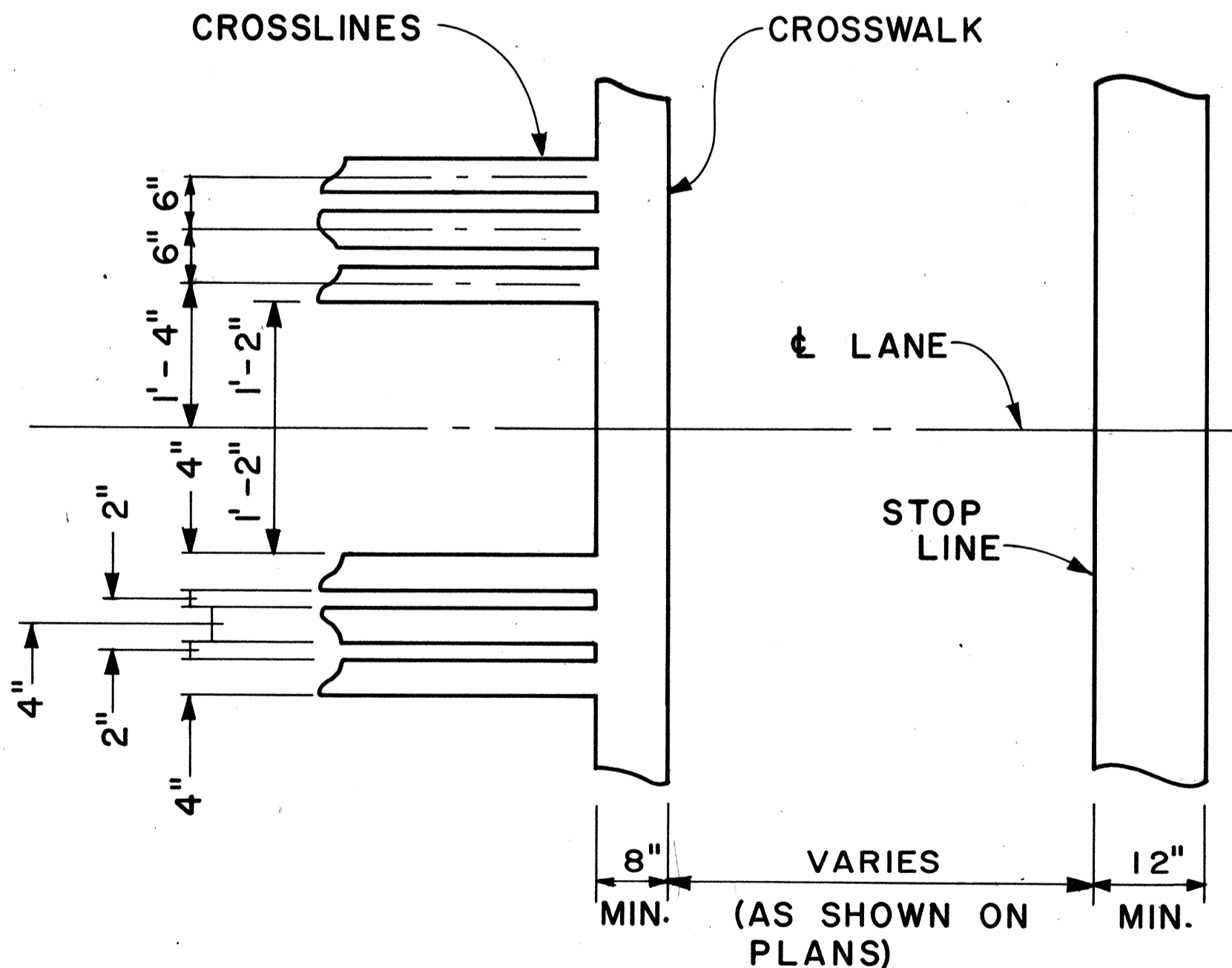
STANDARD

PAVEMENT ARROWS

Scale: 3/8" = 1'



PLAN



DETAIL "A"

CROSSWALK & STOP LINE

Scale: Not to Scale

APPROVAL RECOMMENDED:
Erichi Tanaka 5/2/78
 TRAFFIC ENGINEER DATE

APPROVED:
Harold S. Sakai 5/3/78
 ASSISTANT CHIEF, ENGINEERING DATE

NO.	REVISION	APPROVED BY	DATE

STATE OF HAWAII
 DEPARTMENT OF TRANSPORTATION
 LAND TRANSPORTATION FACILITIES DIVISION
STANDARD DETAILS
 MISCELLANEOUS
 PAVEMENT MARKINGS

Scale: As Shown Date: March, 1978
 SHEET NO. OF SHEETS DT 306