






**NOTES:**

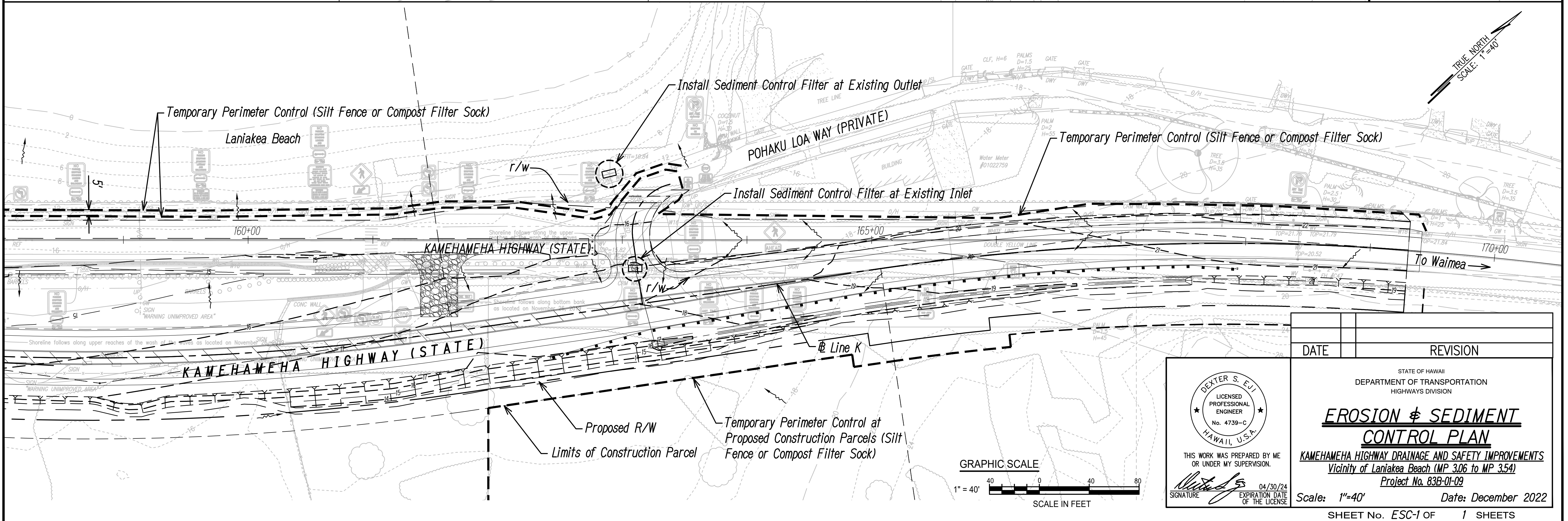
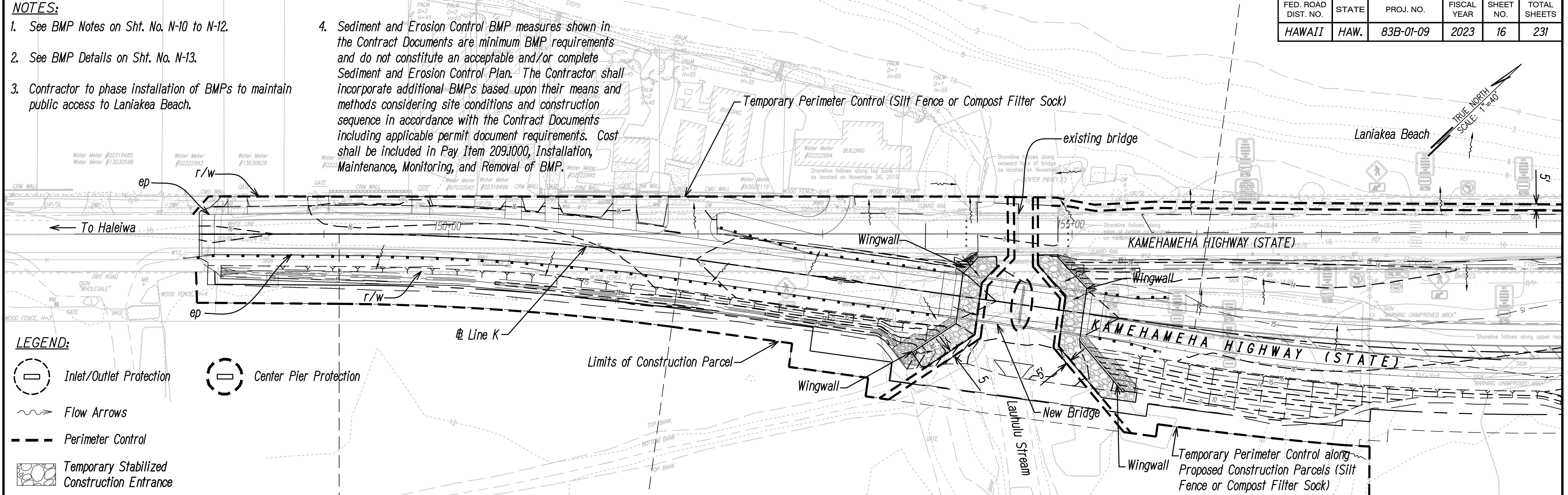
1. See BMP Notes on Sht. No. N-10 to N-12.
2. See BMP Details on Sht. No. N-13.
3. Contractor to phase installation of BMPs to maintain public access to Laniakea Beach.

4. Sediment and Erosion Control BMP measures shown in the Contract Documents are minimum BMP requirements and do not constitute an acceptable and/or complete Sediment and Erosion Control Plan. The Contractor shall incorporate additional BMPs based upon their means and methods considering site conditions and construction sequence in accordance with the Contract Documents including applicable permit document requirements. Cost shall be included in Pay Item 209.1000, Installation, Maintenance, Monitoring, and Removal of BMP.

FED. ROAD DIST. NO.	STATE	PROJ. NO.	FISCAL YEAR	SHEET NO.	TOTAL SHEETS
HAWAII	HAW.	83B-01-09	2023	16	231

**LEGEND:**

-  Inlet/Outlet Protection
-  Center Pier Protection
-  Flow Arrows
-  Perimeter Control
-  Temporary Stabilized Construction Entrance



DATE	_____
DESIGNED BY	_____
DRAWN BY	_____
CHECKED BY	_____
NOTED BY	_____
QUANTITIES BY	_____
NO.	_____

DEXTER S. EJI  
LICENSED PROFESSIONAL ENGINEER  
No. 4739-C  
HAWAII, U.S.A.  
THIS WORK WAS PREPARED BY ME OR UNDER MY SUPERVISION.  
SIGNATURE: *[Signature]* 04/30/24  
EXPIRATION DATE OF THE LICENSE

DATE	REVISION
STATE OF HAWAII DEPARTMENT OF TRANSPORTATION HIGHWAYS DIVISION	
<b>EROSION &amp; SEDIMENT CONTROL PLAN</b>	
KAMEHAMEHA HIGHWAY DRAINAGE AND SAFETY IMPROVEMENTS Vicinity of Laniakea Beach (MP 3.06 to MP 3.54) Project No. 83B-01-09	
Scale: 1"=40'	Date: December 2022
SHEET No. ESC-1 OF 1 SHEETS	