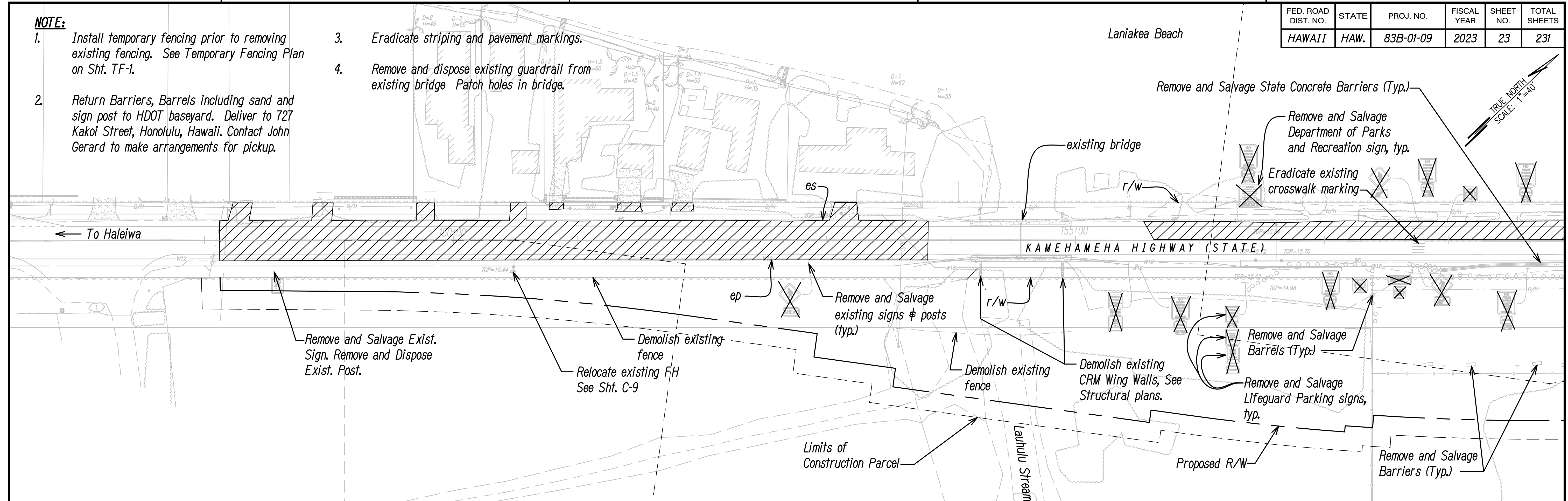


NOTE:

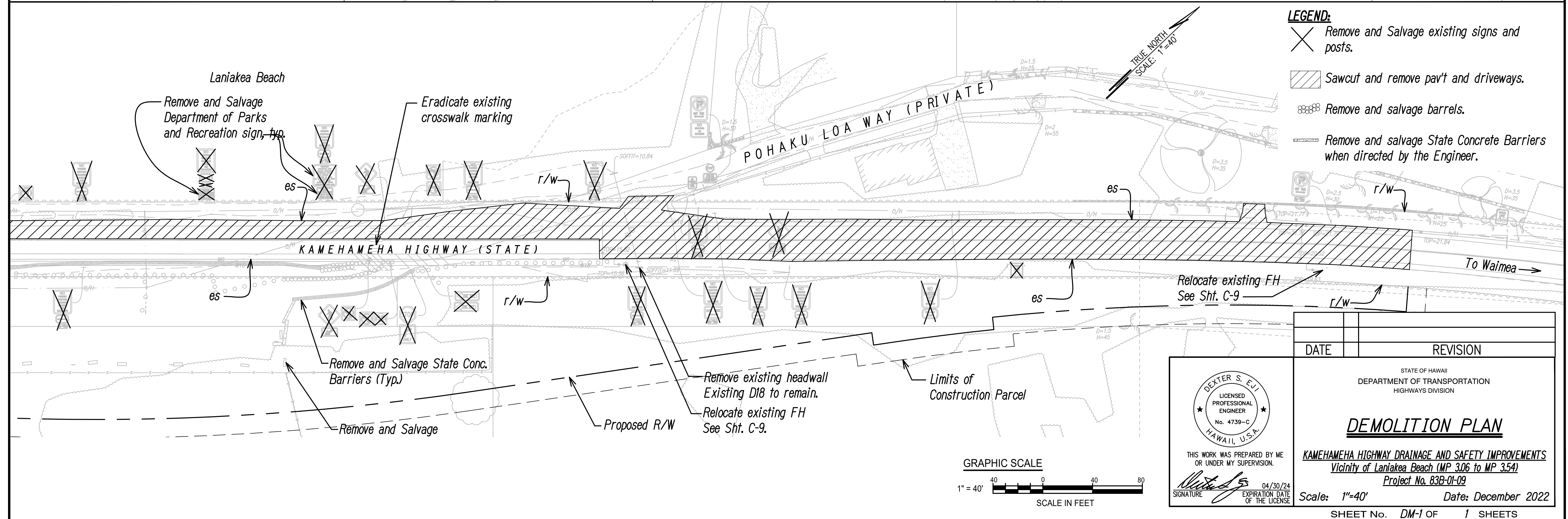
1. Install temporary fencing prior to removing existing fencing. See Temporary Fencing Plan on Sht. TF-1.
2. Return Barriers, Barrels including sand and sign post to HDOT baseyard. Deliver to 727 Koko Street, Honolulu, Hawaii. Contact John Gerard to make arrangements for pickup.
3. Eradicate striping and pavement markings.
4. Remove and dispose existing guardrail from existing bridge. Patch holes in bridge.

FED. ROAD DIST. NO.	STATE	PROJ. NO.	FISCAL YEAR	SHEET NO.	TOTAL SHEETS
HAWAII	HAW.	83B-01-09	2023	23	231

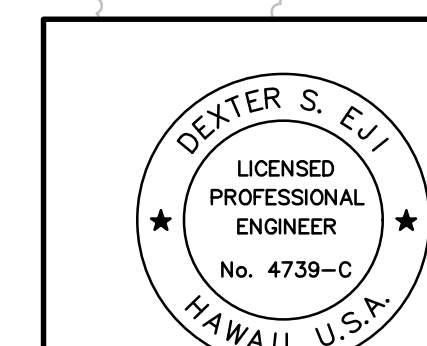
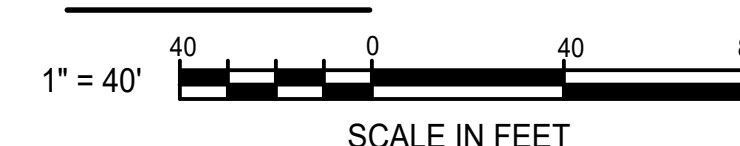


LEGEND:

- Remove and Salvage existing signs and posts.
- Sawcut and remove pav't and driveways.
- Remove and salvage barrels.
- Remove and salvage State Concrete Barriers when directed by the Engineer.



GRAPHIC SCALE



THIS WORK WAS PREPARED BY ME OR UNDER MY SUPERVISION.
SIGNATURE: [Signature] EXPIRATION DATE OF THE LICENSE: 04/30/24

DATE	REVISION
STATE OF HAWAII DEPARTMENT OF TRANSPORTATION HIGHWAYS DIVISION	
DEMOLITION PLAN	
KAMEHAMEHA HIGHWAY DRAINAGE AND SAFETY IMPROVEMENTS Vicinity of Lanikea Beach (MP 3.06 to MP 3.54) Project No. 83B-01-09	
Scale: 1"=40'	Date: December 2022
SHEET No. DM-1 OF 1 SHEETS	