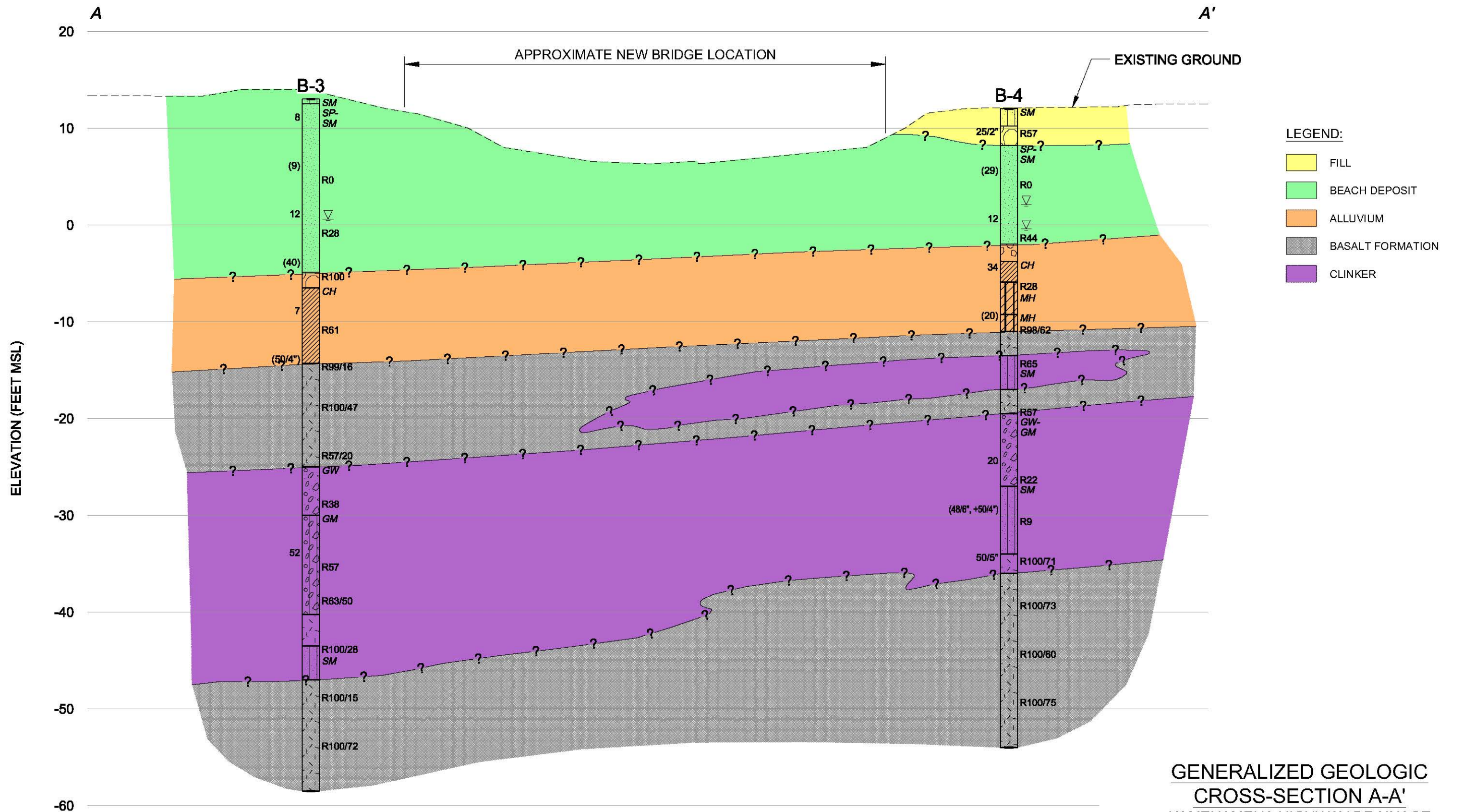


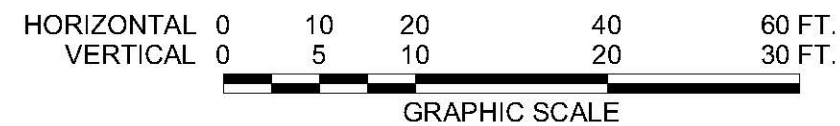
CAD User: HENRY File Last Updated: August 15, 2022 11:45:21am Plot Date: August 17, 2022 - 11:08:47am
File: A:\Drafting\Working\7651-00(A) Kam Hwy Drainage and Safety Improvements\7651-00(A)\SubsurfaceProfile.dwg/3
Plotter: DWG To PDF-Geo.pc3 Plotstyle: GEOLABS-Standard-Half.ctb



LEGEND:

- ▽ WATER TABLE MEASURED IN BORING
- 20 BLOW COUNT REQUIRED FOR 12 INCHES OF PENETRATION OF A 2-INCH O.D. STANDARD PENETRATION SAMPLER
- (20) BLOW COUNT REQUIRED FOR 12 INCHES OF PENETRATION OF A 3-INCH O.D. MODIFIED CALIFORNIA SAMPLER
- R100/50 REC/RQD VALUES IN PERCENT

NOTE: THE CONDITIONS ILLUSTRATED ARE BASED ON OUR BORINGS AND GEOLOGICAL INTERPRETATIONS. WHILE THESE ARE BELIEVED TO BE GENERALLY CORRECT, THE CONDITIONS MAY VARY LOCALLY FROM THOSE INDICATED.



GENERALIZED GEOLOGIC
CROSS-SECTION A-A'
KAMEHAMEHA HIGHWAY DRAINAGE
AND SAFETY IMPROVEMENTS
VICINITY OF MP 3.06 TO MP 3.54
WAIALUA, OAHU, HAWAII

GEOLABS, INC.		
Geotechnical Engineering		
DATE	DRAWN BY	PLATE
AUGUST 2022	HYC	
SCALE	W.O.	3
HORIZ: 1" = 20'	7651-00(A)	
VERT: 1" = 10'		