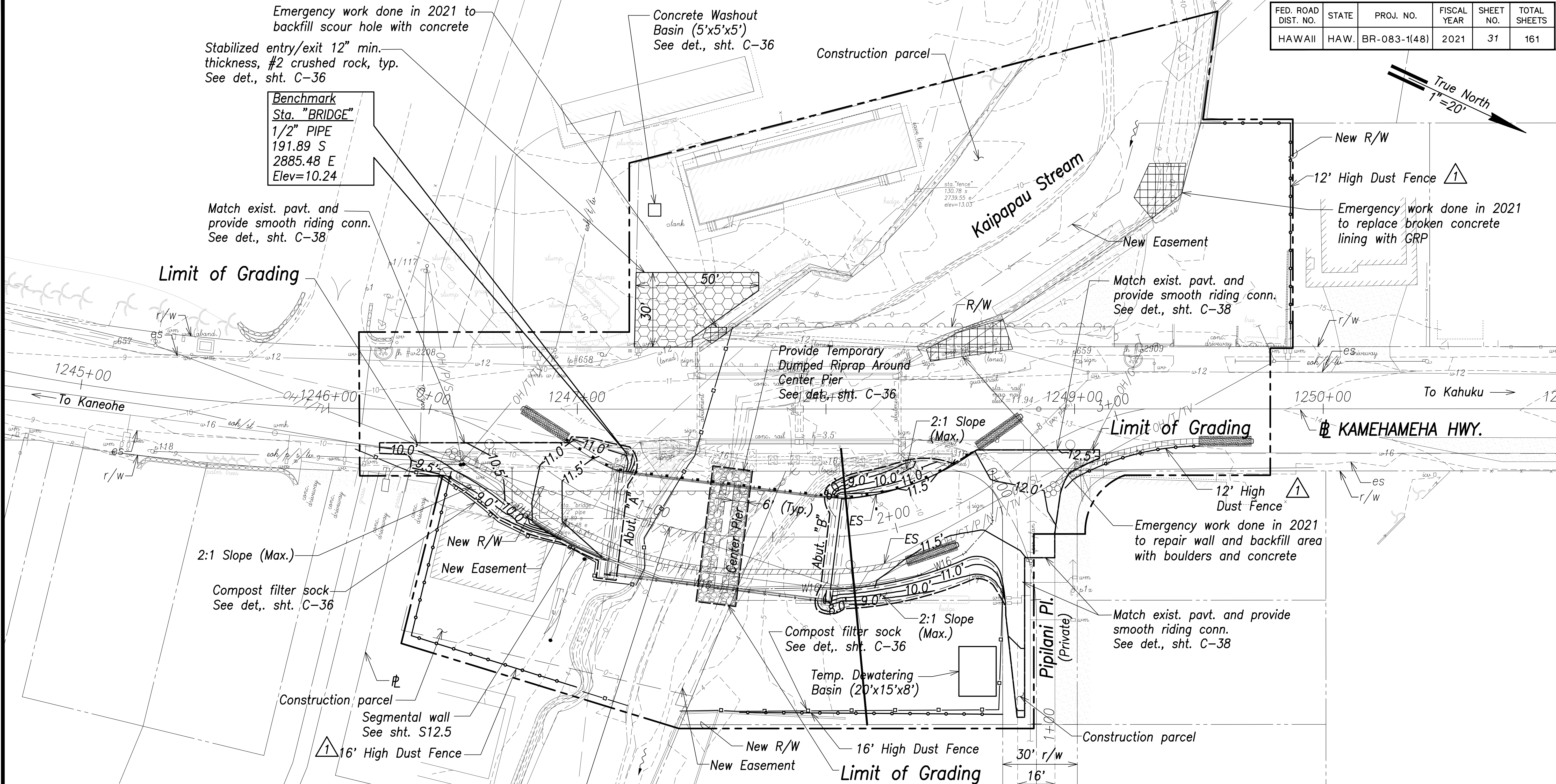


FED. ROAD DIST. NO.	STATE	PROJ. NO.	FISCAL YEAR	SHEET NO.	TOTAL SHEETS
HAWAII	HAW.	BR-083-1(48)	2021	31	161



Legend:

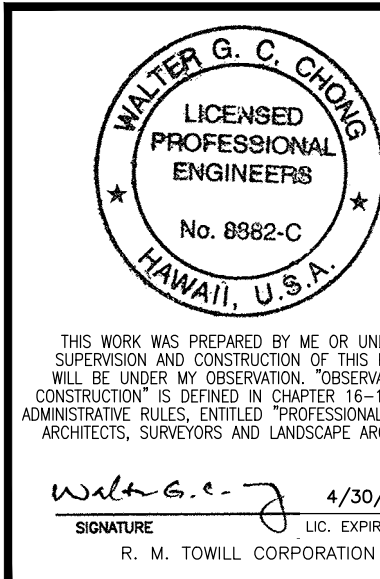
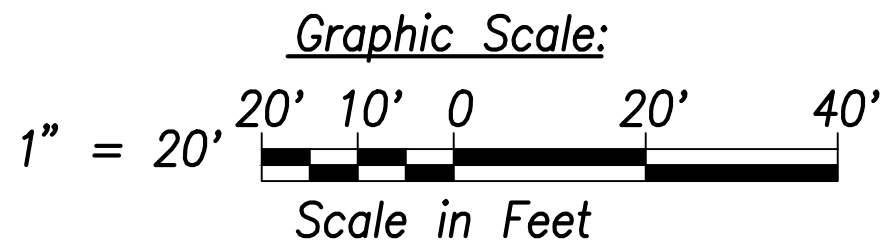
- Project Limits
- Exist. Ground Contour
- 10.0' Finished Grade Contour
- Limit of Grading
- Dust Fence
- Compost Filter Sock
- Drainage Flow Direction
- Stabilized Entry/Exit

Notes:

- The contractor shall be responsible for obtaining grading permit from the City and County of Honolulu, Department of Planning and Permitting.
- Sediment and Erosion Control BMP measures shown in the Contract Documents are minimum BMPs requirements and do not constitute an acceptable and/or complete Sediment and Erosion Control Plan. The Contractor shall incorporate additional BMPs based upon their means and methods considering site conditions and construction sequence in accordance with the Contract Documents including applicable permit document requirements. Cost shall be included in Pay Item 209.0100, "Installation, Maintenance, Monitoring, and Removal of BMP."

DIVERSION ROAD – GRADING, EROSION AND SEDIMENT CONTROL PLAN

Scale: 1"=20'



7/7/21	Rev. Dust fence height
DATE	REVISION

STATE OF HAWAII
DEPARTMENT OF TRANSPORTATION
HIGHWAYS DIVISION
DIVERSION ROAD-GRADING, EROSION AND SEDIMENT CONTROL PLAN
Kamehameha Highway
Kaipapau Stream Bridge Replacement
Federal Aid Project No. BR-083-1(48)

Scale: As Noted Date: February 2021

SHEET No. C-29 OF SHEETS