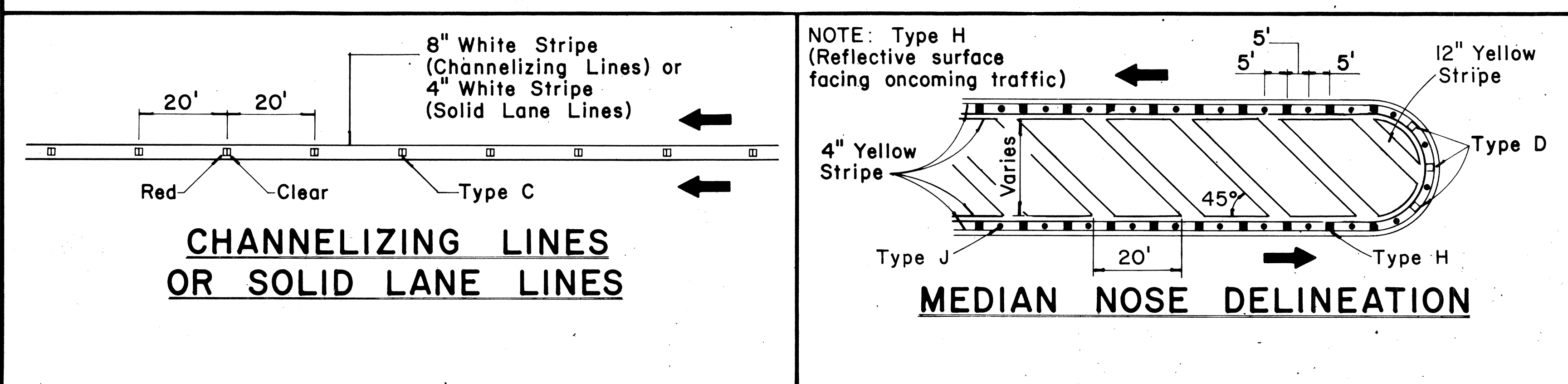
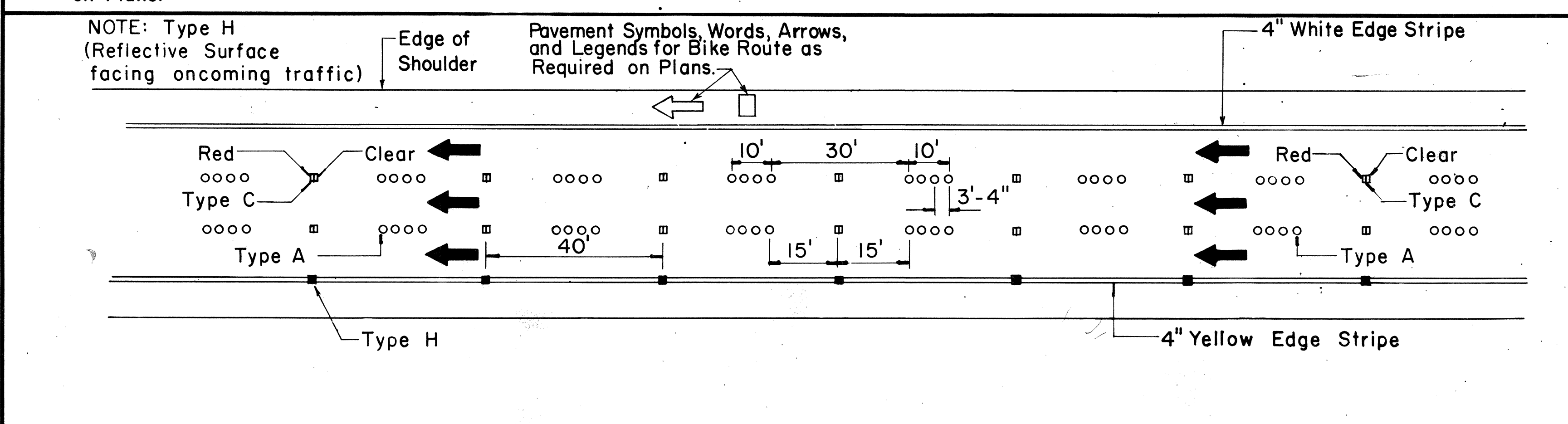
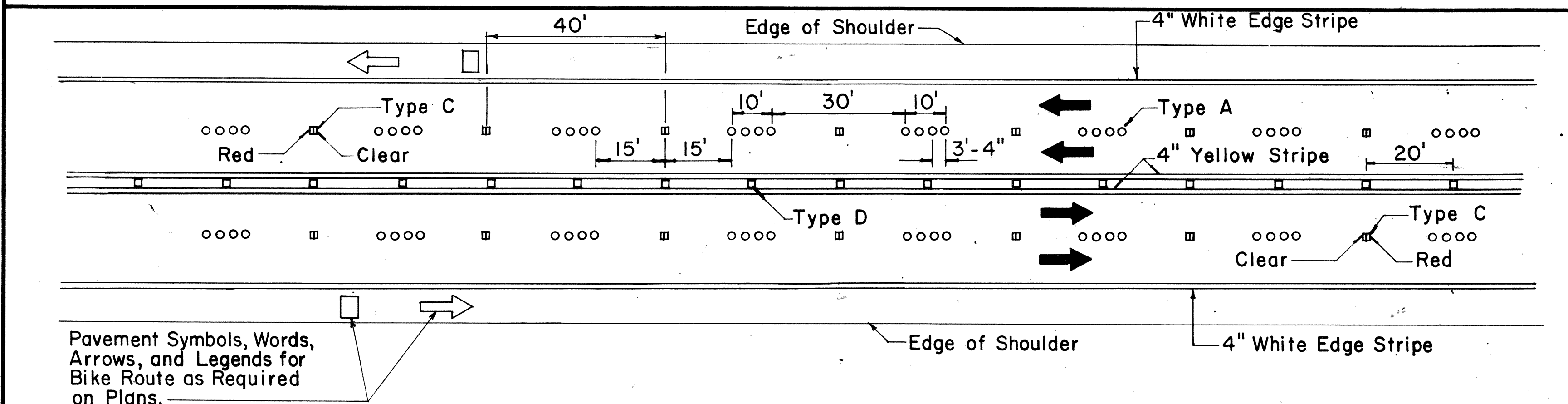
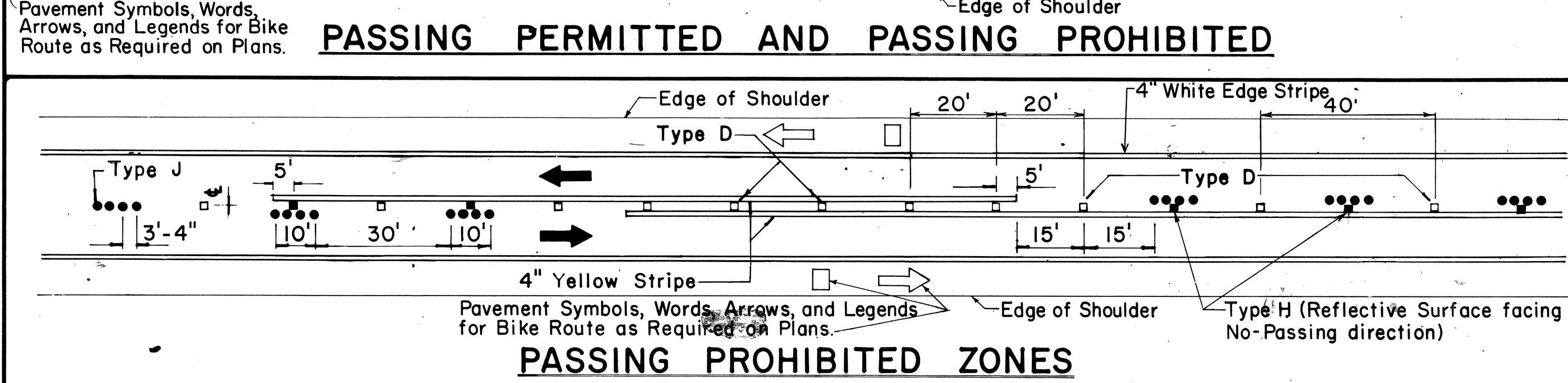
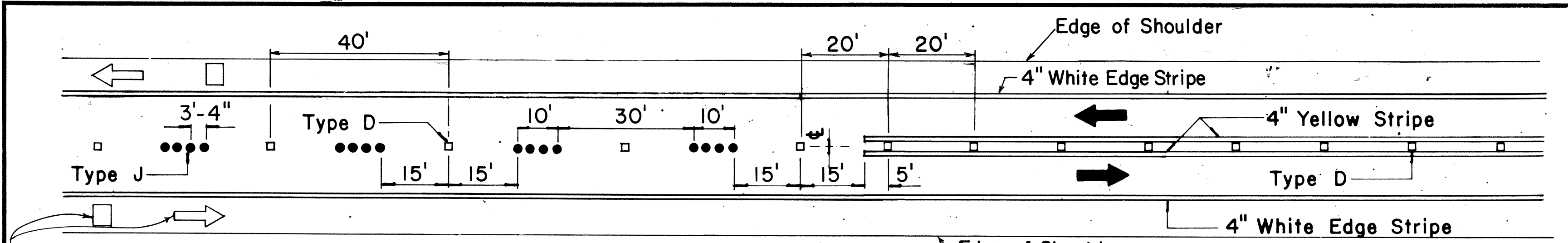


FED. ROAD DIST. NO.	STATE	PROJ. NO.	FISCAL YEAR	SHEET NO.	TOTAL SHEETS
HAWAII	HAW.	83C-01-81M	1981	13	14

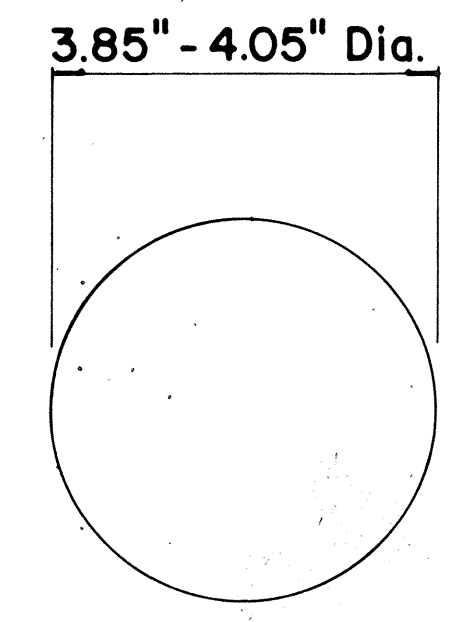


TWO - LANE

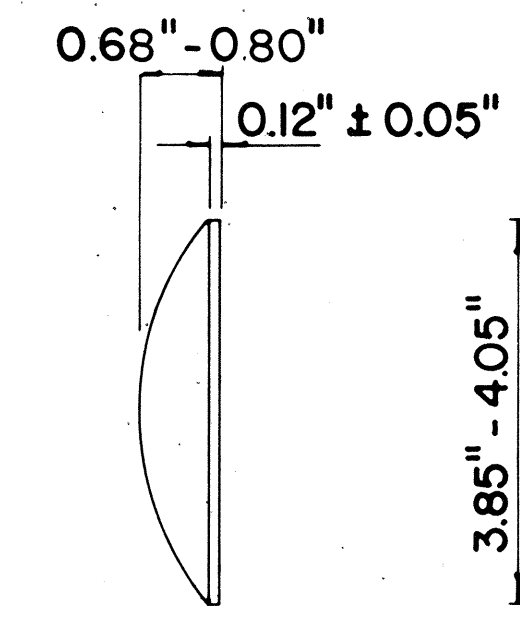
MULTI - LANE

DIVIDED HIGHWAY AND FREEWAY

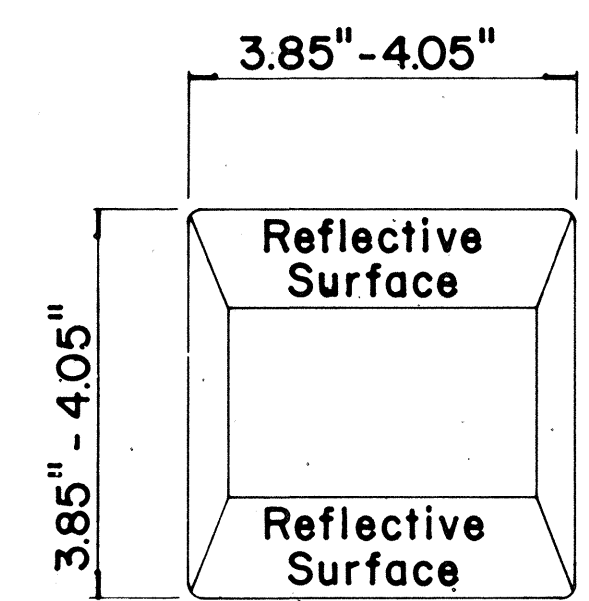
MISCELLANEOUS



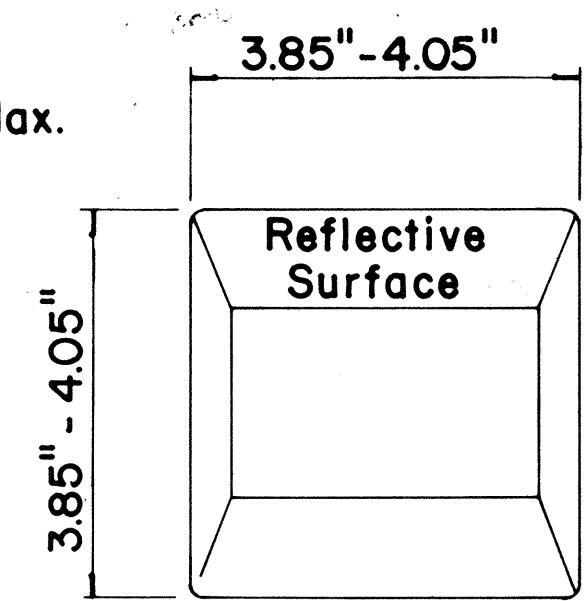
TYPE A
NON - REFLECTIVE WHITE MARKER
TYPE J
NON - REFLECTIVE YELLOW MARKER



TYPE C
RED - CLEAR REFLECTIVE MARKER



TYPE D
TWO-WAY YELLOW REFLECTIVE MARKER



TYPE H
ONE-WAY YELLOW REFLECTIVE MARKER

GENERAL NOTES

- Pavement marking and striping shall conform to the latest "Manual on Uniform Traffic Control Devices for Streets and Highways," and as amended.
- Layout and installation of pavement marking and striping shall be done by the Contractor. The Contractor shall check the layouts with the Engineer prior to performing work.

LEGEND

- Type A
- Type C
- Type D
- Type H
- Type J

APPROVAL RECOMMENDED:

Ericki Tanaka
TRAFFIC ENGINEER

7/21/78
DATE

APPROVED:

Robert J. Zalewski
ASSISTANT CHIEF, ENGINEERING

1/24/78
DATE

No.	REVISION	APPROVED BY	DATE
1	Supersedes DT 300 approved 11/18/71.	H.T.	1/24/78
2	Delete Type A Markers from Bike Route Delineation.	H.T.	10/15/79

STATE OF HAWAII
DEPARTMENT OF TRANSPORTATION
HIGHWAYS DIVISION

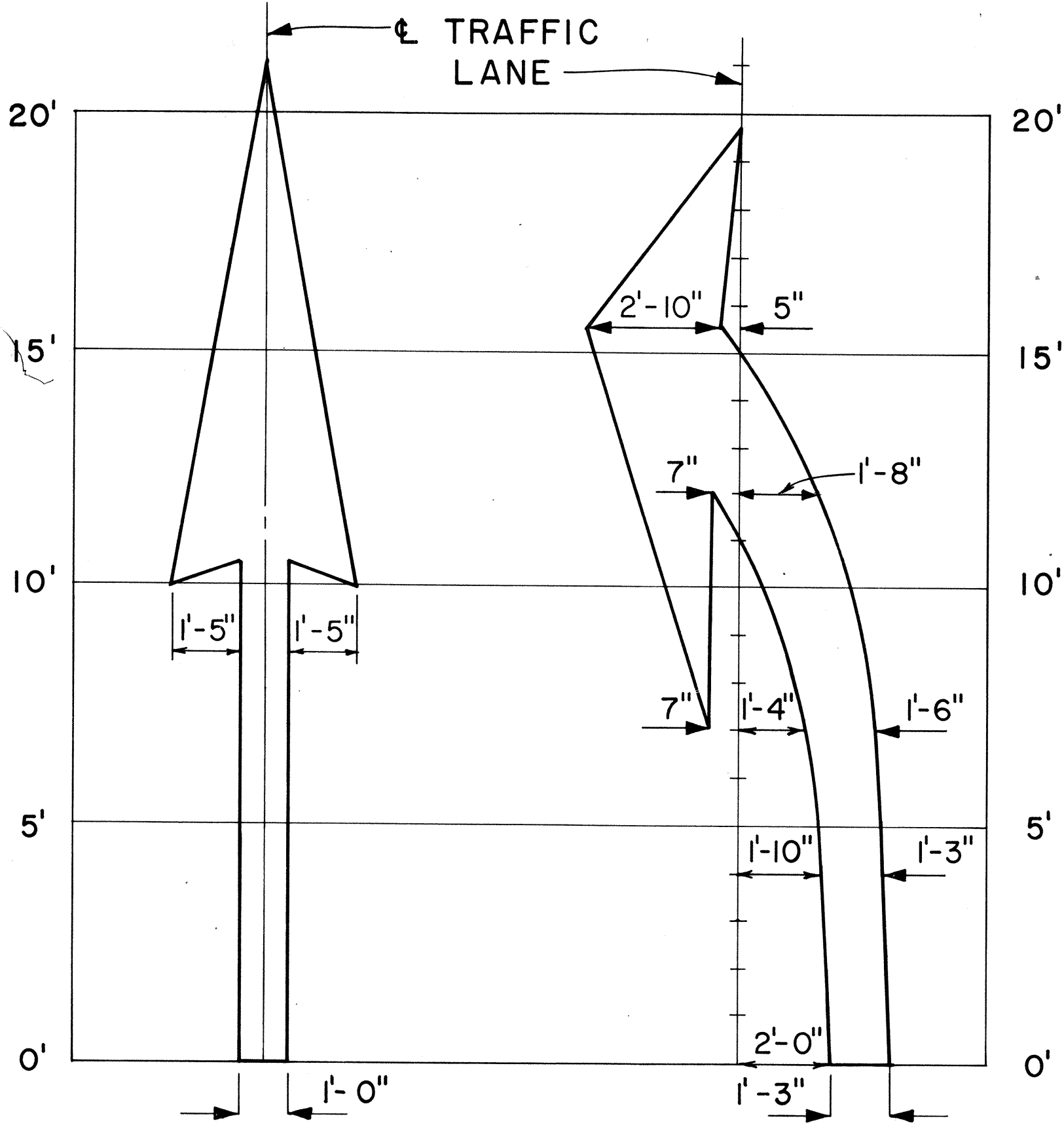
STANDARD DETAILS
RAISED PAVEMENT MARKERS
AND STRIPING

Not to Scale July 1978
SHEET No. 6 OF 7 SHEETS DT 300

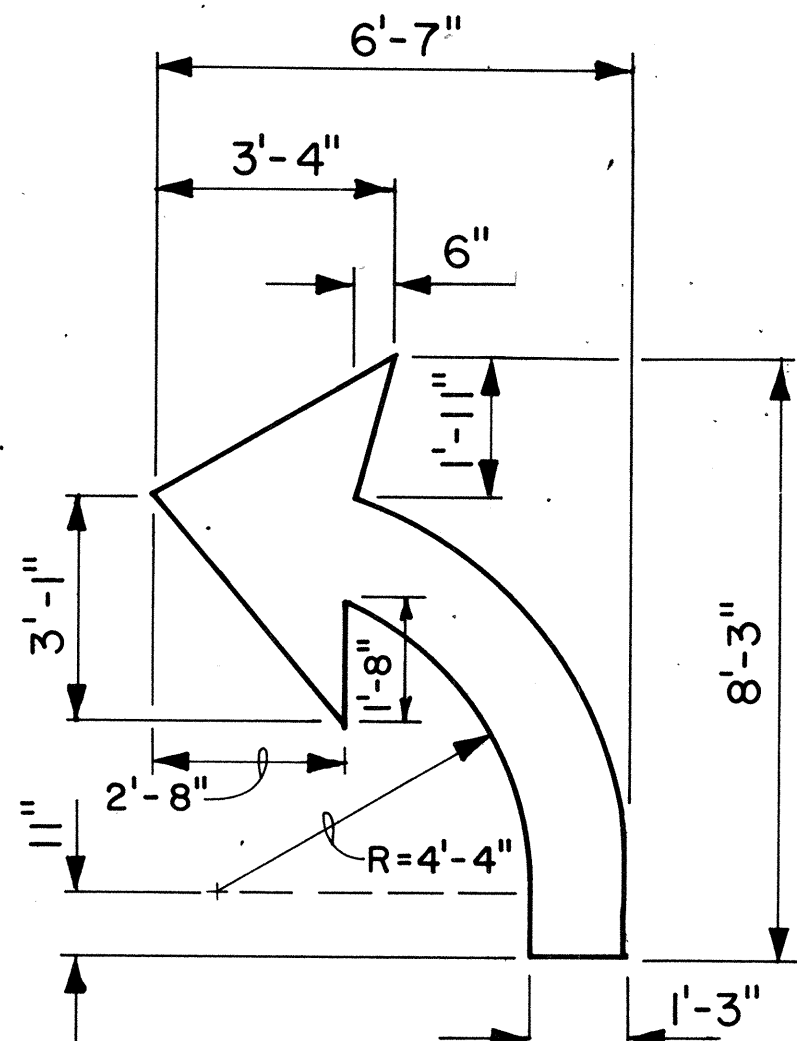
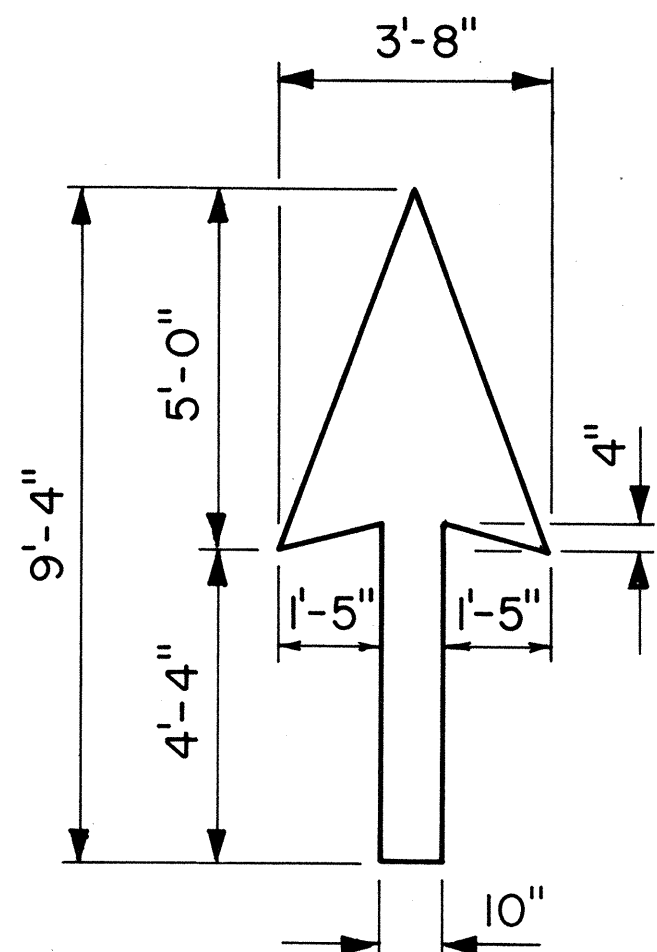
FED. ROAD DIST. NO.	STATE	PROJ. NO.	FISCAL YEAR	SHEET NO.	TOTAL SHEETS
HAWAII	HAW.	83C-01-8111	1981	14	14

GENERAL NOTES:

1. Pavement marking and striping shall conform to the latest edition of the "Manual on Uniform Traffic Control Devices for Streets and Highways," by the FHWA, and as amended.
2. Layout of pavement markings and striping shall be done by the Contractor. The Contractor shall check layout of markings and striping with the Engineer prior to performing work.
3. For additional pavement marking details, see sheet DT 300.



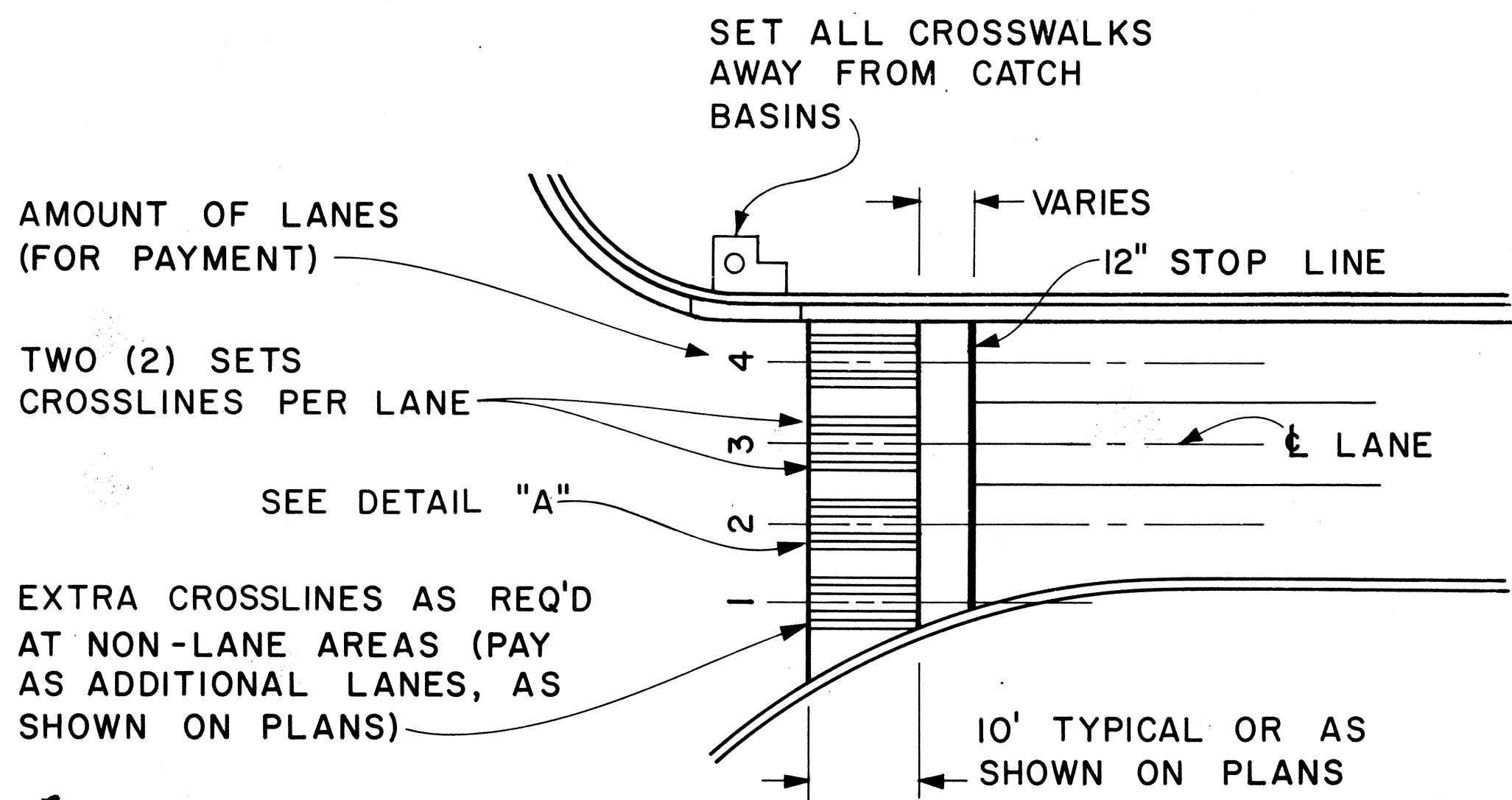
ELONGATED



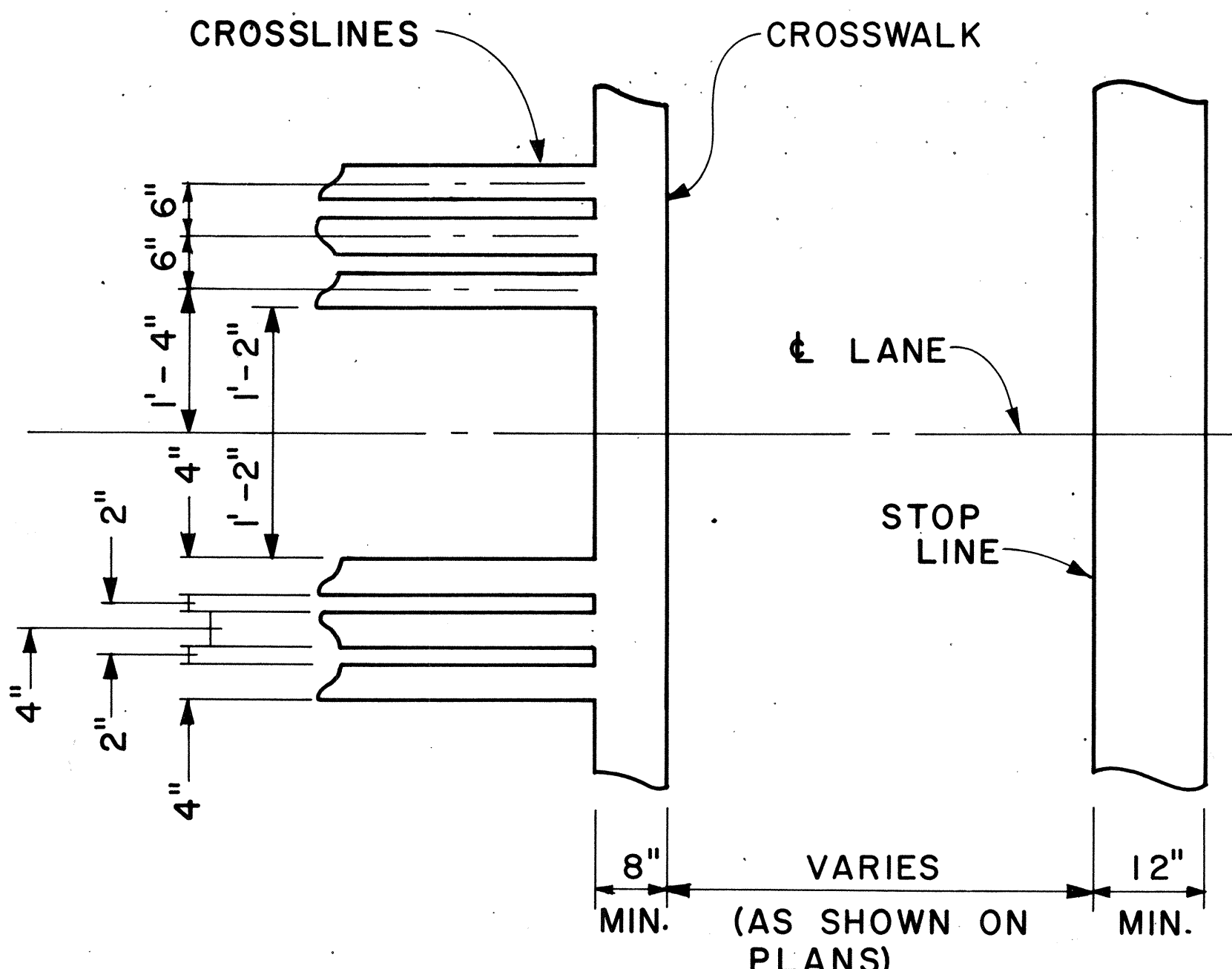
STANDARD

PAVEMENT ARROWS

Scale: 3/8" = 1'



PLAN



DETAIL "A"

CROSSWALK & STOP LINE

Scale: Not to Scale

APPROVAL RECOMMENDED: Erich Tanaka 5/2/78
TRAFFIC ENGINEER DATE

APPROVED: Robert Z. Zaleski 5/2/78
ASSISTANT CHIEF, ENGINEERING DATE

NO.	REVISION	APPROVED BY	DATE

STATE OF HAWAII
DEPARTMENT OF TRANSPORTATION
LAND TRANSPORTATION FACILITIES DIVISION

STANDARD DETAILS

MISCELLANEOUS
PAVEMENT MARKINGS

Scale: As Shown Date: March, 1978
SHEET NO. 7 OF 7 SHEETS DT 306