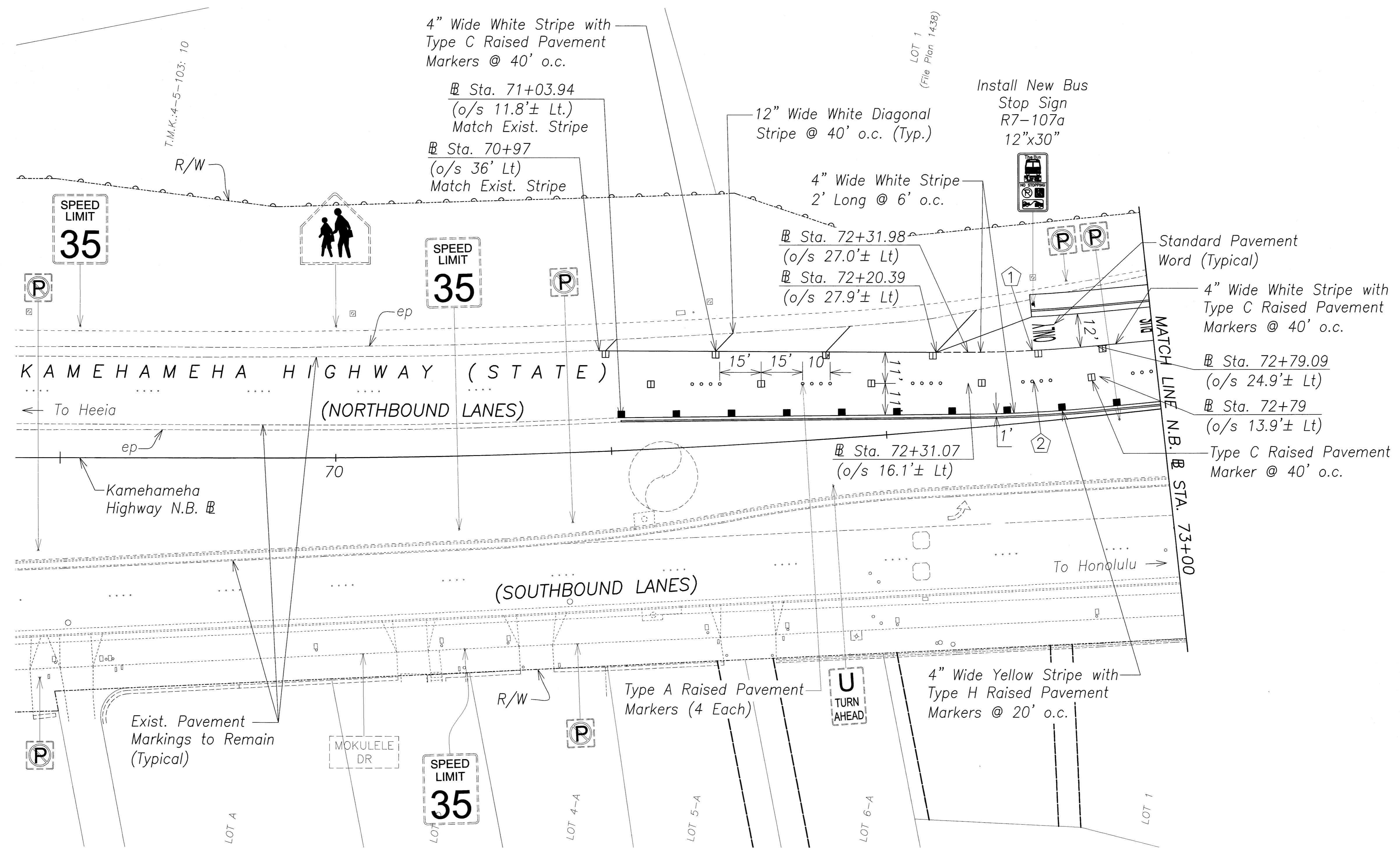
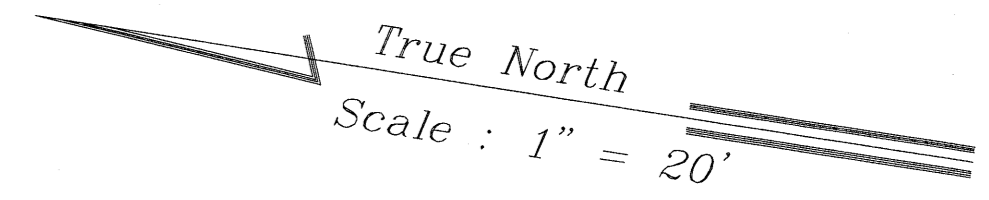


FED. ROAD DIST. NO.	STATE	PROJ. NO.	FISCAL YEAR	SHEET NO.	TOTAL SHEETS
OAHU	HAW.	83G-01-10	2011	25	38



CURVE DATA		
	①	②
Δ	5°09'09"	5°09'09"
Δ/2	2°34'34"	2°34'34"
R	520.00	531.00
T	23.40	23.89
C	46.75	47.74
Lc	46.76	47.75

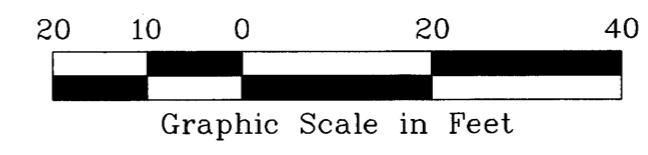
SURVEY PLOTTED BY	DATE
DRAWN BY	
DESIGNED BY	
QUANTITIES BY	
CHECKED BY	
No.	

C:\Documents and Settings\Peter L. Moku\My Documents\AutoCAD Files\Projects\2009-08-Traffic Operational Improvements\Plan\1b\_Kamehameha\_H09-14\_17\_25-27\_Plan.dwg Wed, May 25, 2011 - 11:11 am



THIS WORK WAS PREPARED BY ME OR UNDER MY SUPERVISION AND CONSTRUCTION OF THIS PROJECT WILL BE UNDER MY OBSERVATION. "OBSERVATION OF CONSTRUCTION" SHALL BE AS DEFINED IN CHAPTER 115, RULES OF THE BOARD OF PROFESSIONAL ENGINEERS, ARCHITECTS AND SURVEYORS, STATE OF HAWAII, SUBCHAPTER 1, SECTION 115-115-2, DEFINITIONS, EFFECTIVE 08/29/94.

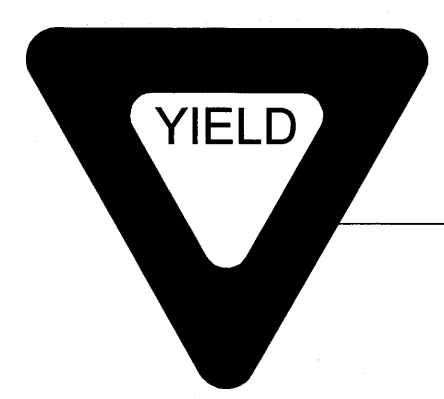
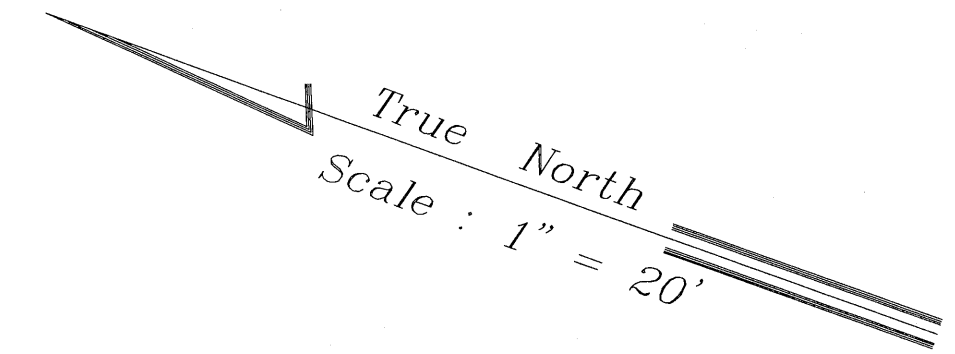
*Peter L. Moku*  
 ENGINEERS SURVEYORS HAWAII, INC.  
 MY LICENSE EXPIRES: APRIL 30, 2012



STATE OF HAWAII  
 DEPARTMENT OF TRANSPORTATION  
 HIGHWAYS DIVISION  
**PAVEMENT MARKING  
 AND SIGNING PLAN**  
 TRAFFIC OPERATIONAL IMPROVEMENTS  
 AT VARIOUS LOCATIONS  
 VICINITY OF KAMEHAMEHA HIGHWAY AND MOKULELE DRIVE  
 Project No. 83G-01-10

Scale: As Noted      Date: May 2011  
 SHEET No. 2 OF 4 SHEETS

FED. ROAD DIST. NO.	STATE	PROJ. NO.	FISCAL YEAR	SHEET NO.	TOTAL SHEETS
OAHU	HAW.	83G-01-10	2011	26	38



Install New Sign with Breakaway Mounts R01-02 36"x36"x36"

4" Wide White Stripe with Type C Raised Pavement Markers @ 40' o.c.  
12" Wide White Diagonal Stripe @ 40' o.c. (Typ.)

Standard Pavement Word (Typical)

4" Wide Yellow Stripe with Type H Raised Pavement Markers @ 20' o.c.

Kamehameha Highway N.B.

Exist. Pavement Marking to Remain

12" Wide White Diagonal Stripe @ 20' o.c. (Typ.)

4" Yellow Guide Lines

12" Wide White Stop Bar

8" Wide White Stripe with Type C Raised Pavement Markers @ 20' o.c.; Match Exist. Stripe.

Install New Yield Bar

4" Wide White Stripe with Type C Raised Pavement Markers @ 40' o.c.

12" Wide White Diagonal Stripe @ 40' o.c. (Typ.)

Standard Pavement Word (Typical)

4" Wide Yellow Stripe with Type H Raised Pavement Markers @ 20' o.c.

Kamehameha Highway N.B.

Exist. Pavement Marking to Remain

12" Wide White Diagonal Stripe @ 20' o.c. (Typ.)

4" Yellow Guide Lines

12" Wide White Stop Bar

8" Wide White Stripe with Type C Raised Pavement Markers @ 20' o.c.; Match Exist. Stripe.

Install New Yield Bar

4" Wide White Stripe with Type C Raised Pavement Markers @ 40' o.c.

12" Wide White Diagonal Stripe @ 40' o.c. (Typ.)

Standard Pavement Word (Typical)

4" Wide Yellow Stripe with Type H Raised Pavement Markers @ 20' o.c.

Kamehameha Highway N.B.

Exist. Pavement Marking to Remain

12" Wide White Diagonal Stripe @ 20' o.c. (Typ.)

4" Yellow Guide Lines

12" Wide White Stop Bar

8" Wide White Stripe with Type C Raised Pavement Markers @ 20' o.c.; Match Exist. Stripe.

Install New Yield Bar

4" Wide White Stripe with Type C Raised Pavement Markers @ 40' o.c.

12" Wide White Diagonal Stripe @ 40' o.c. (Typ.)

Standard Pavement Word (Typical)

4" Wide Yellow Stripe with Type H Raised Pavement Markers @ 20' o.c.

Kamehameha Highway N.B.

Exist. Pavement Marking to Remain

12" Wide White Diagonal Stripe @ 20' o.c. (Typ.)

4" Yellow Guide Lines

12" Wide White Stop Bar

C:\Documents and Settings\peter.l.mow\My Documents\AutoCAD Files\Projects\2009-2018 Traffic Operational Improvements\Plans\10\_Kamehameha\_Highway\14\_17\_25-27\_Plan\_Ing\_Wed\_May\_25\_2011 - 11:11 am

SURVEY PLOTTED BY	DATE
DRAWN BY	
DESIGNED BY	
QUANTITIES BY	
CHECKED BY	
NO.	

	③	④	⑤	⑥	⑦	⑧	⑨	⑩	⑪
Δ	52°42'55"	15°55'22"	78°32'18"	78°32'18"	34°25'25"	34°59'52"	4°25'07"	4°06'28"	3°39'01"
Δ/2	26°21'28"	7°57'41"	39°16'09"	39°16'09"	17°12'42"	17°29'56"	2°12'34"	2°03'14"	1°49'31"
R	45.00	57.00	80.00	80.00	150.00	138.00	520.00	531.00	542.00
T	22.30	7.97	65.41	22.73	46.47	22.73	20.06	19.04	17.27
C	39.96	15.79	101.27	43.74	88.77	43.74	40.09	38.06	34.53
Lc	41.40	15.84	109.66	44.30	90.12	44.30	40.10	38.07	34.53



THIS WORK WAS PREPARED BY ME OR UNDER MY SUPERVISION AND CONSTRUCTION OF THIS PROJECT WILL BE UNDER MY OBSERVATION. "OBSERVATION OF CONSTRUCTION" SHALL BE AS DEFINED IN CHAPTER 115, RULES OF THE BOARD OF PROFESSIONAL ENGINEERS, ARCHITECTS AND SURVEYORS, STATE OF HAWAII, SUBCHAPTER 1, SECTION 115-2, DEFINITIONS, EFFECTIVE 08/29/94.

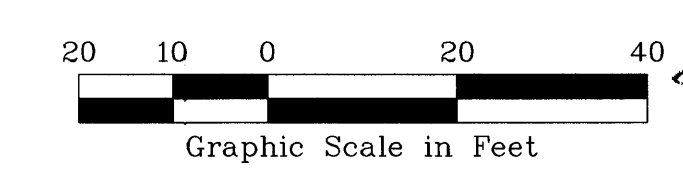
*Peter L. Mow*  
 ENGINEERS SURVEYORS HAWAII, INC.  
 BY US/NS/EXP/RES: APRIL 30, 2012

STATE OF HAWAII  
 DEPARTMENT OF TRANSPORTATION  
 HIGHWAYS DIVISION

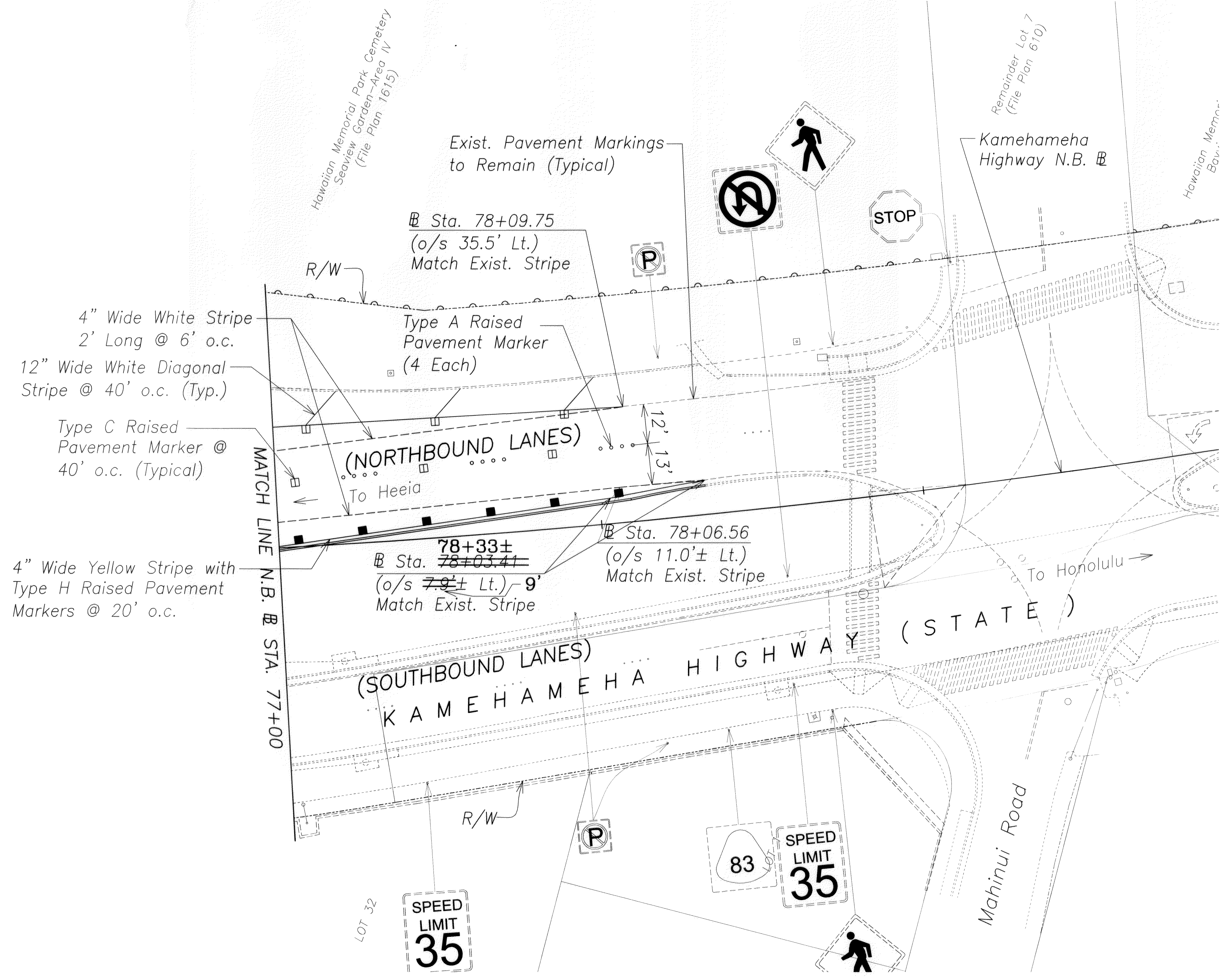
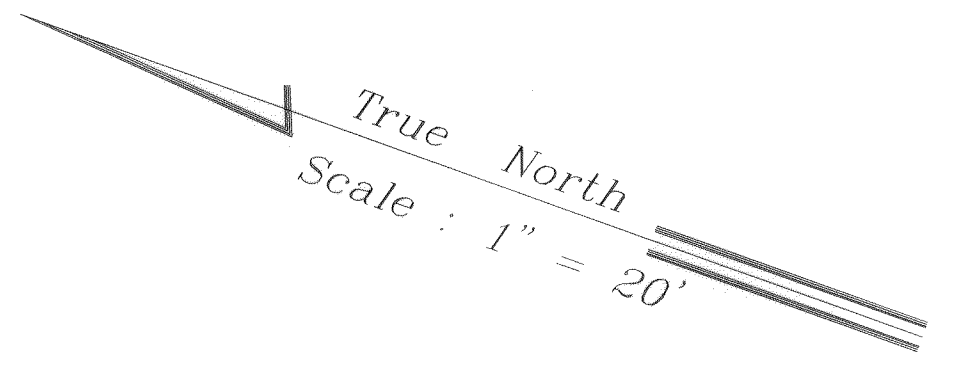
**PAVEMENT MARKING AND SIGNING PLAN**

TRAFFIC OPERATIONAL IMPROVEMENTS  
 AT VARIOUS LOCATIONS  
 VICINITY OF KAMEHAMEHA HIGHWAY AND MOKULELE DRIVE  
 Project No. 83G-01-10

Scale: As Noted Date: May 2011  
 SHEET No. 3 OF 4 SHEETS



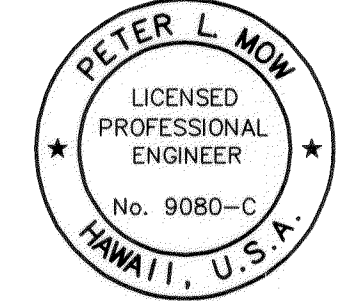
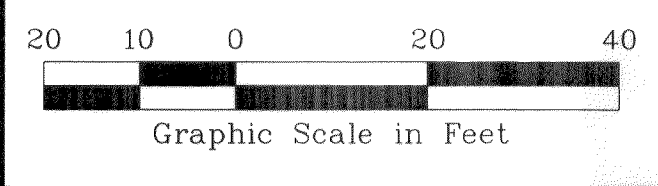
FED. ROAD DIST. NO.	STATE	PROJ. NO.	FISCAL YEAR	SHEET NO.	TOTAL SHEETS
OAHU	HAW.	83G-01-10	2011	27	38



- 4" Wide White Stripe  
2' Long @ 6' o.c.
- 12" Wide White Diagonal  
Stripe @ 40' o.c. (Typ.)
- Type C Raised  
Pavement Marker @  
40' o.c. (Typical)
- 4" Wide Yellow Stripe with  
Type H Raised Pavement  
Markers @ 20' o.c.

LEGEND FOR AS-BUILT POSTINGS	
	Squiggly line for as-built deletion
	Double line for as-built deletion
Roadway	Text for as-built posting

ORIGINAL PLAN	DATE
DRAWN BY	
TRACED BY	
QUANTITIES BY	
CHECKED BY	
NO.	



THIS WORK WAS PREPARED BY ME OR UNDER MY SUPERVISION AND CONSTRUCTION OF THIS PROJECT WILL BE UNDER MY OBSERVATION. ("OBSERVATION OF CONSTRUCTION" SHALL BE AS DEFINED IN CHAPTER 115, RULES OF THE BOARD OF PROFESSIONAL ENGINEERS, ARCHITECTS AND SURVEYORS, STATE OF HAWAII, SUBCHAPTER 1, SECTION 15-115-2, DEFINITIONS, EFFECTIVE 08/29/94.)

*Peter L. Mow*  
ENGINEERS SURVEYORS HAWAII, INC.  
MY LICENSE EXPIRES: APRIL 30, 2011

STATE OF HAWAII  
DEPARTMENT OF TRANSPORTATION  
HIGHWAYS DIVISION

**PAVEMENT MARKING  
AND SIGNING PLAN**

TRAFFIC OPERATIONAL IMPROVEMENTS  
AT VARIOUS LOCATIONS  
VICINITY OF KAMEHAMEHA HIGHWAY AND MOKULELE DRIVE  
Project No. 83G-01-10

Scale: As Noted Date: May 2011

SHEET No. 4 OF 4 SHEETS

"AS-BUILT"