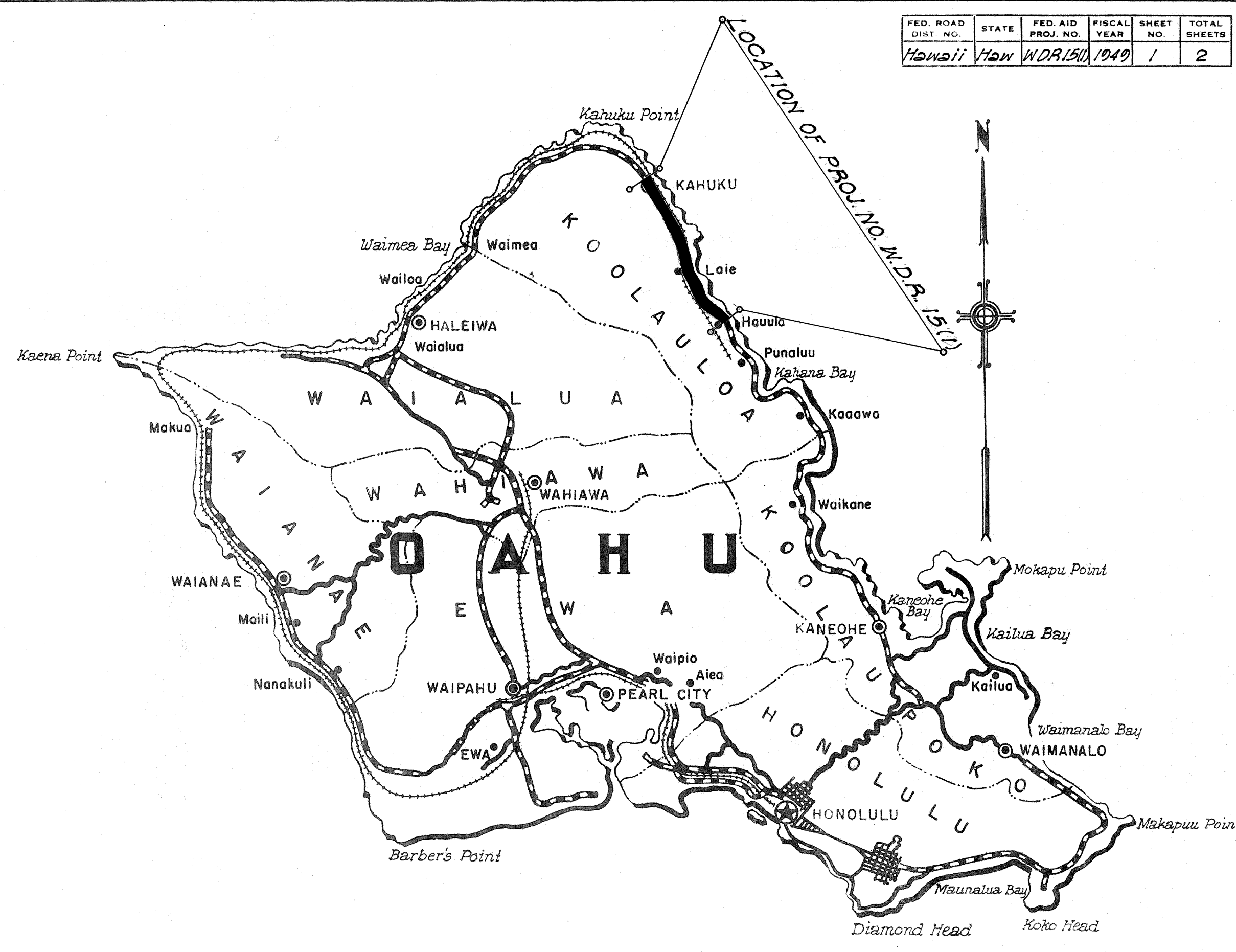


INDEX TO DRAWINGS	
SHEET NO.	DESCRIPTION
1	TITLE SHEET
2	TYPICAL SECTIONS

TERRITORY OF HAWAII
TERRITORIAL HIGHWAY DEPARTMENT
HONOLULU, OAHU, T. H.

PLANS OF
REHABILITATION
OF A PORTION OF
KAMEHAMEHA HIGHWAY
KAHUKU TO HAUULA
WAR DAMAGE REHABILITATION PROJECT NO. W.D.R. 15 (1)
DISTRICT OF KOOLAULOA
ISLAND OF OAHU

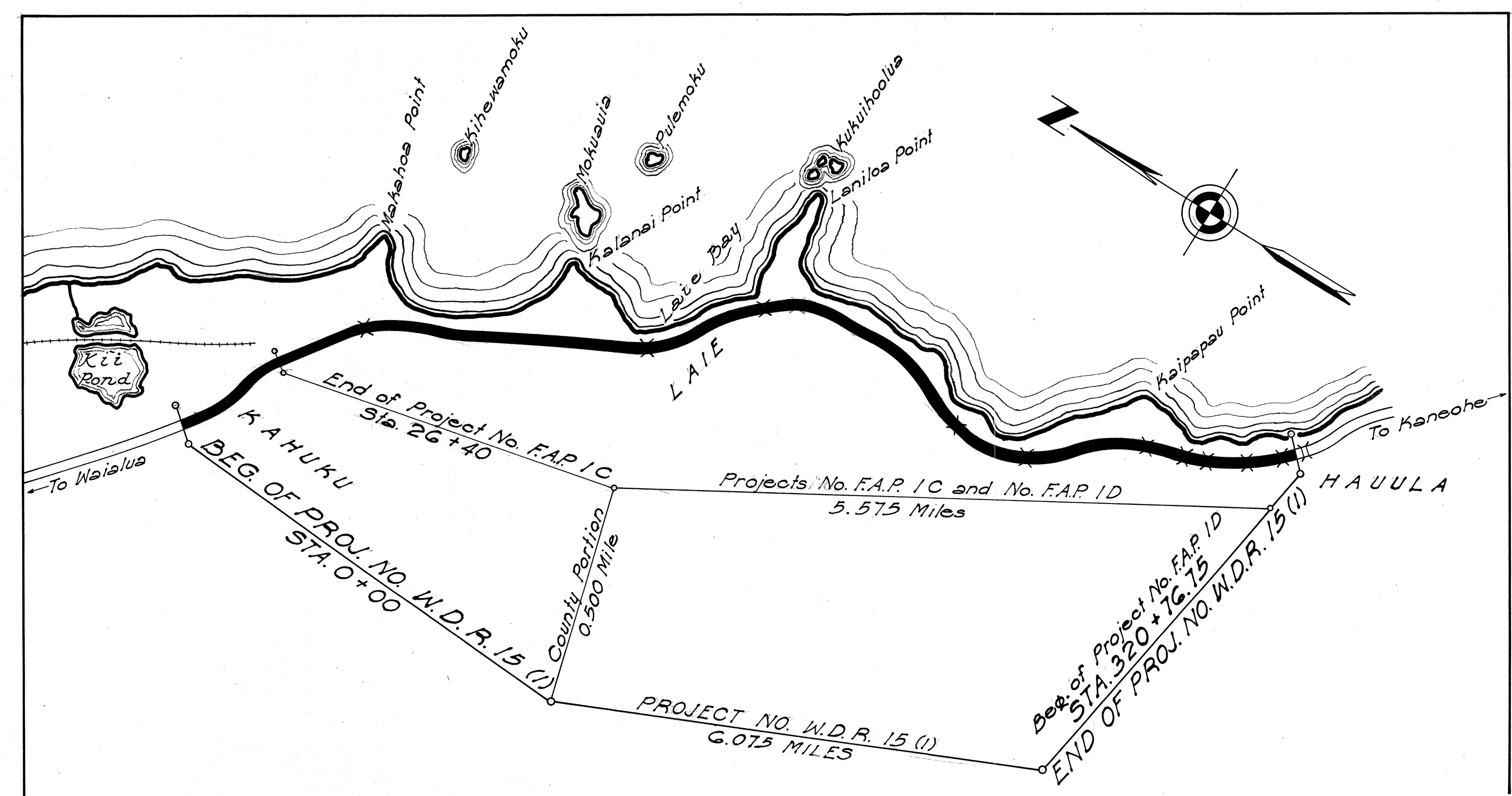


FED. ROAD DIST. NO.	STATE	FED. AID PROJ. NO.	FISCAL YEAR	SHEET NO.	TOTAL SHEETS
Hawaii	Haw	W.D.R. 15 (1)	1949	1	2

CONVENTIONAL SIGNS

Centerline	----- -----	125
Boundary Lines	-----, or -----	
Fences (Named)	-----	
Existing Roadways	-----	
Circular Culvert	-----	
Box Culvert	-----	
Bridge	-----	
Telephone Pole	-----	
Electric Power Pole	-----	
Water Main	-----	(W 4, 8, 12, Etc.)
Storm Drain	-----	(SD 18, 24, Etc.)
Concrete Drop Intake	-----	
Standard Catch Basin	-----	
Standard Manhole	-----	M.H.S.
Sewer Manhole	-----	S.M.H.
Telephone Manhole	-----	T.M.H.
Fire Hydrant	-----	F.H.
Tree (Large, named)	-----	Mango, Coca
Railroad	-----	

Federal Aid Projects Previously Constructed Or Under Construction



DATE
DESIGNED BY
DRAWN BY
TRACED BY
QUANTITIES CHECKED BY
CHECKED BY

Scale: 1" = 2 Miles

LAYOUT OF PROJECT

Projects No. FAP 1C and FAP 1D.....5.575 Miles
County Portion.....0.500 Mile
Gross & Net Length of Project.....6.075 Miles

APPROVED DATE 2-14-49
[Signature]
TERRITORIAL HIGHWAY ENGINEER

RECOMMENDED FOR APPROVAL DATE.....
DISTRICT ENGINEER
PUBLIC ROADS ADMINISTRATION
FEDERAL WORKS AGENCY
APPROVED DATE.....
DIVISION ENGINEER
PUBLIC ROADS ADMINISTRATION
FEDERAL WORKS AGENCY