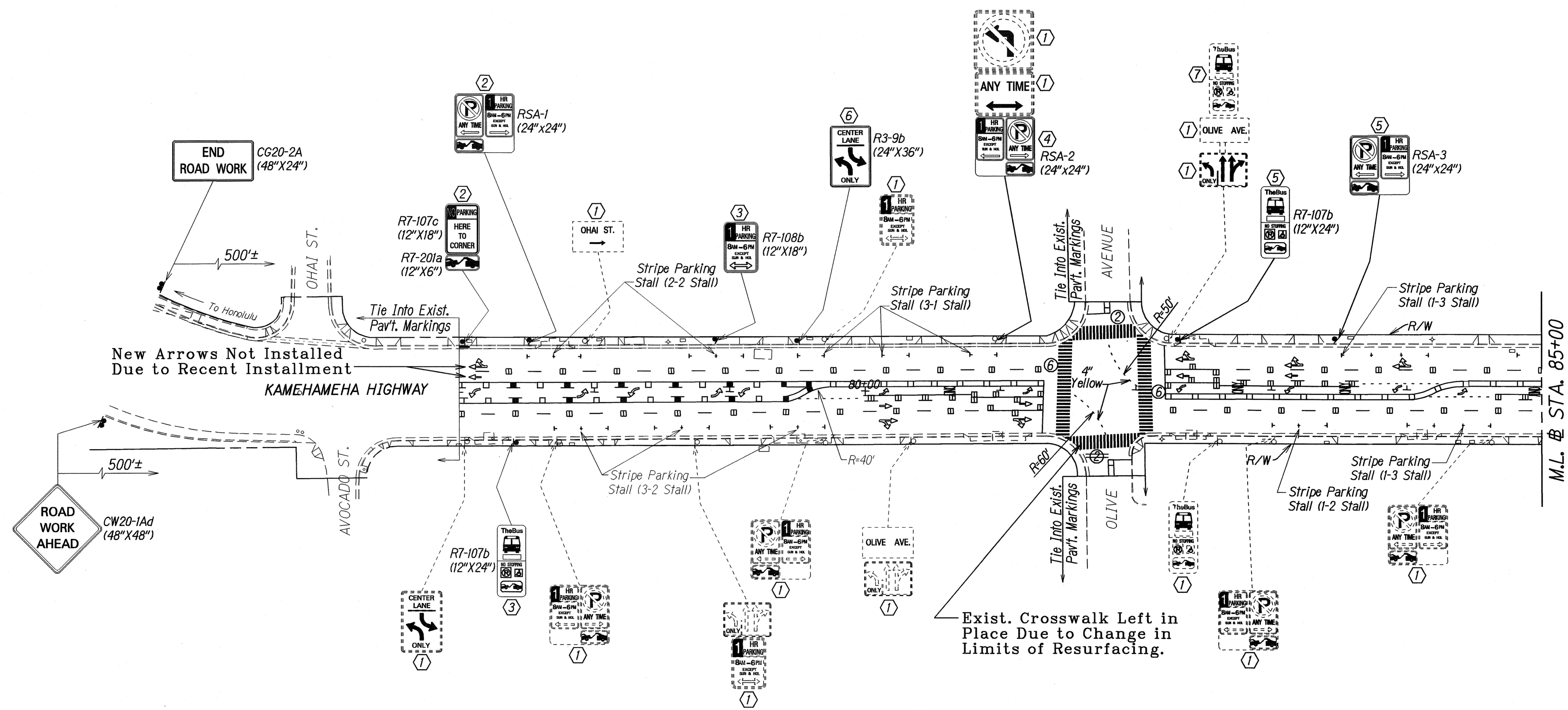
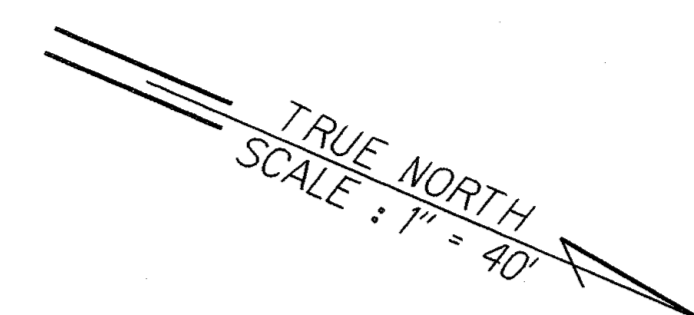


FED. ROAD DIST. NO.	STATE	PROJ. NO.	FISCAL YEAR	SHEET NO.	TOTAL SHEETS
HAWAII	HAW.	80A-01-02M	2003	9	15



- KEY:**
- ① Exist. Sign(s) & Post(s) to Remain
  - ② Remove Exist. Sign(s) & Post(s) & Install New Sign(s) w/Post(s)
  - ③ Remove Exist. Sign(s) & Install New Sign(s) on Exist. Post(s)
  - ④ Remove Exist. Sign(s) & Install New Sign(s) on Exist. Light Standard
  - ⑤ Install New Sign(s) w/Post(s)
  - ⑥ Install New Sign(s) on Exist. Light Standard
  - ⑦ Remove Exist. Sign(s)

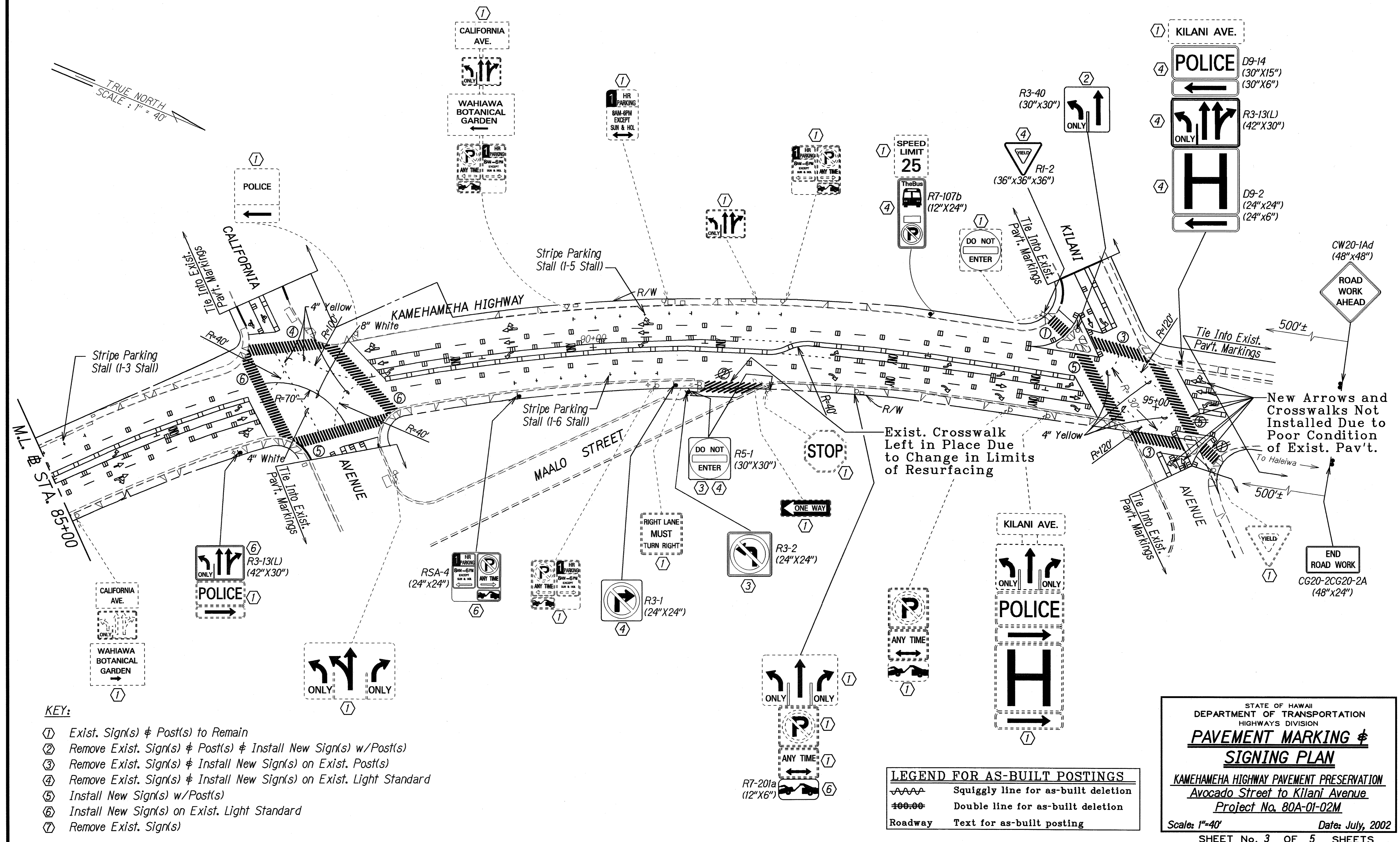
LEGEND FOR AS-BUILT POSTINGS	
	Squiggly line for as-built deletion
	Double line for as-built deletion
Roadway	Text for as-built posting

SURVEY PLOTTED BY: DATE: 7/16/02  
 DRAWN BY: M. Takahashi  
 NOTE BOOK: 10/2/02  
 QUANTITIES BY: GARY K. CHASE  
 CHECKED BY: M. Takahashi

STATE OF HAWAII  
 DEPARTMENT OF TRANSPORTATION  
 HIGHWAYS DIVISION  
**PAVEMENT MARKING & SIGNING PLAN**  
 KAMEHAMEHA HIGHWAY PAVEMENT PRESERVATION  
 Avocado Street to Kilani Avenue  
 Project No. 80A-01-02M  
 Scale: 1"=40' Date: July 2002  
 SHEET No. 2 OF 5 SHEETS

AS-BUILT

FED. ROAD DIST. NO.	STATE	PROJ. NO.	FISCAL YEAR	SHEET NO.	TOTAL SHEETS
HAWAII	HAW.	80A-01-02M	2003	10	15



- KEY:**
- ① Exist. Sign(s) & Post(s) to Remain
  - ② Remove Exist. Sign(s) & Post(s) & Install New Sign(s) w/Post(s)
  - ③ Remove Exist. Sign(s) & Install New Sign(s) on Exist. Post(s)
  - ④ Remove Exist. Sign(s) & Install New Sign(s) on Exist. Light Standard
  - ⑤ Install New Sign(s) w/Post(s)
  - ⑥ Install New Sign(s) on Exist. Light Standard
  - ⑦ Remove Exist. Sign(s)

**LEGEND FOR AS-BUILT POSTINGS**

	Squiggly line for as-built deletion
	Double line for as-built deletion
Roadway	Text for as-built posting

STATE OF HAWAII  
DEPARTMENT OF TRANSPORTATION  
HIGHWAYS DIVISION

**PAVEMENT MARKING & SIGNING PLAN**

KAMEHAMEHA HIGHWAY PAVEMENT PRESERVATION  
Avocado Street to Kilani Avenue  
Project No. 80A-01-02M

Scale: 1"=40' Date: July, 2002

SHEET No. 3 OF 5 SHEETS

SURVEY PLOTTED BY: DATE: 1/24/03  
 PLAN DRAWN BY: M. Takahashi  
 NOTE WORK DESIGNED BY: GUY L. KIKIHI  
 12/20/02  
 CHECKED BY: GUY L. KIKIHI

AS-BUILT