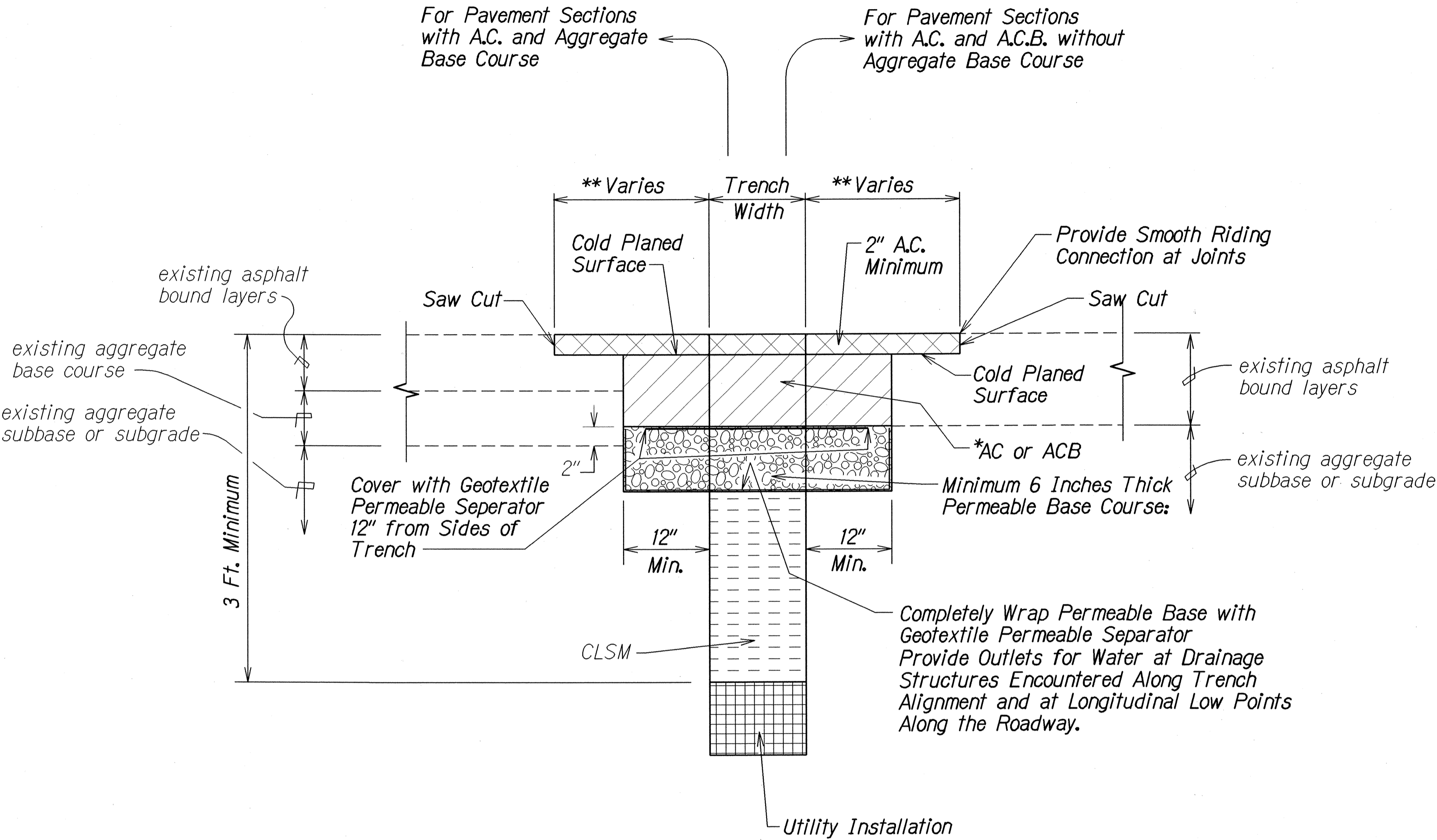


FED. ROAD DIST. NO.	STATE	PROJ. NO.	FISCAL YEAR	SHEET NO.	TOTAL SHEETS
HAWAII	HAW.	99C-01-00	2002	6	21



**Notes:**

1. This trench restoration is to be used wherever the pavement is an asphalt surface, including medians and paved areas between guardrails. For trenches located in unpaved areas, the backfill need not be CLSM and can be backfilled as specified in the Standard Specifications,
2. Tack coat existing asphalt bound material faces prior to filling excavation with asphalt bound material.
3. When ground water is encountered in trenches, backfill with gravel conforming to ASTM C-33, size 67 material until one foot above the water level. Encapsulate the Size 67 material with a permeable separator that lines the bottom and sides of the trench and overlaps at the top of the material for the width of the trench. Complete backfilling the trench per detail.

**\*Notes:**

1. When thickness less than 6", use AC.
2. When thickness 6" or greater, use ACB or AC.

**\*\*Notes:**

1. If trench aligned transverse to direction of travel, 6 feet on each side of trench.
2. If trenched aligned along direction of travel, to edge of lane in which edge of trench is located.
3. Smoothness of paved surfaces:  
The distance from the paved surface to the testing edge of a ten-foot straight edge between two points of contract shall not exceed 3/16".

**ASPHALT PAVEMENT RESTORATION  
OVER TRENCH EXCAVATIONS  
for  
EXISTING PAVEMENTS WITHOUT  
PERMEABLE BASE  
Not to Scale**

STATE OF HAWAII  
DEPARTMENT OF TRANSPORTATION  
HIGHWAYS DIVISION

**PAVEMENT RESTORATION DETAIL**  
KAMEHAMEHA HIGHWAY  
Intersection Improvements at  
Kamalanuui Road  
Project No. 99C-01-00  
Date: Sept., 2001

SHEET No. 1 OF 1 SHEETS

ORIGINAL PLAN	SURVEY PLOTTED BY	DATE
TRACED BY	DRAWN BY	
NOTE BOOK	CHECKED BY	
	QUANTITIES BY	
	CHECKED BY	