

FED. ROAD DIST. NO.	STATE	PROJ. NO.	FISCAL YEAR	SHEET NO.	TOTAL SHEETS
HAWAII	HAW.	99C-01-00	2002	19	21

GENERAL NOTES FOR TRAFFIC CONTROL PLAN

1. Detouring of traffic shall be applicable only during the Contractor's working hours. During non-working hours, all lanes shall be kept open and no detouring will be allowed. All detouring traffic control devices and signs shall be removed or covered during non-working hours.
2. The Contractor shall make minor adjustments at intersections, driveways, bridges, structures, etc. to fit field conditions.
3. Cones or delineators shall be extended to a point where they are visible to approaching traffic.
4. Traffic control devices shall be installed such that the sign or device farthest from the work area is placed first. The others shall then be placed progressively toward the work area.
5. Regulatory and warning signs within the construction zone that are in conflict with the traffic control plans shall be removed or covered. All signs shall be restored upon completion of work.
6. Flaggers and/or police officers shall be in sight of each other or in direct communication at all times.
7. When required by the issuing office, the Contractor shall install a flashing arrow signal as shown on the traffic control plans.
8. All traffic lanes shall be a minimum of ten (10) feet wide.
9. All construction warning signs shall be promptly removed or covered whenever the message is not applicable or not in use.
10. Permanent pavement markings and traffic signs shall be replaced upon completion of each phase of work.
11. Sign spacings and taper lengths shall be as shown on the traffic control plan.
12. Buffer and taper areas on approach to any work site shall be kept clear of vehicles and equipment.
13. Payment for Traffic Control shall be considered incidental to the various contract items.

TABLE 1 FOR TRAFFIC CONTROL PLAN

POSTED SPEED LIMIT (M.P.H.)	SIGN SPACING (D) (FEET)	TAPER LENGTH (T) (FEET)		LONGITUDINAL BUFFER SPACE (B) (FEET)	SPACING OF CONES OR DELINEATORS (FEET)		
		W = 12' OR LESS ①	W = GREATER THAN 12' ①		TAPER	TANGENT	WORK AREA
20	250	200	W X 17	35	20	20	10
25	250	200	W X 17	55	25	25	10
30	250	250	W X 20	85	30	30	10
35	250	250	W X 20	120	35	35	10
40	500	350	W X 30	170	40	40	10
45	1000	550	W X 45	220	45	45	10
50	1000	600	W X 50	280	50	50	10
55	1000	700	W X 55	335	55	55	10

NOTES:

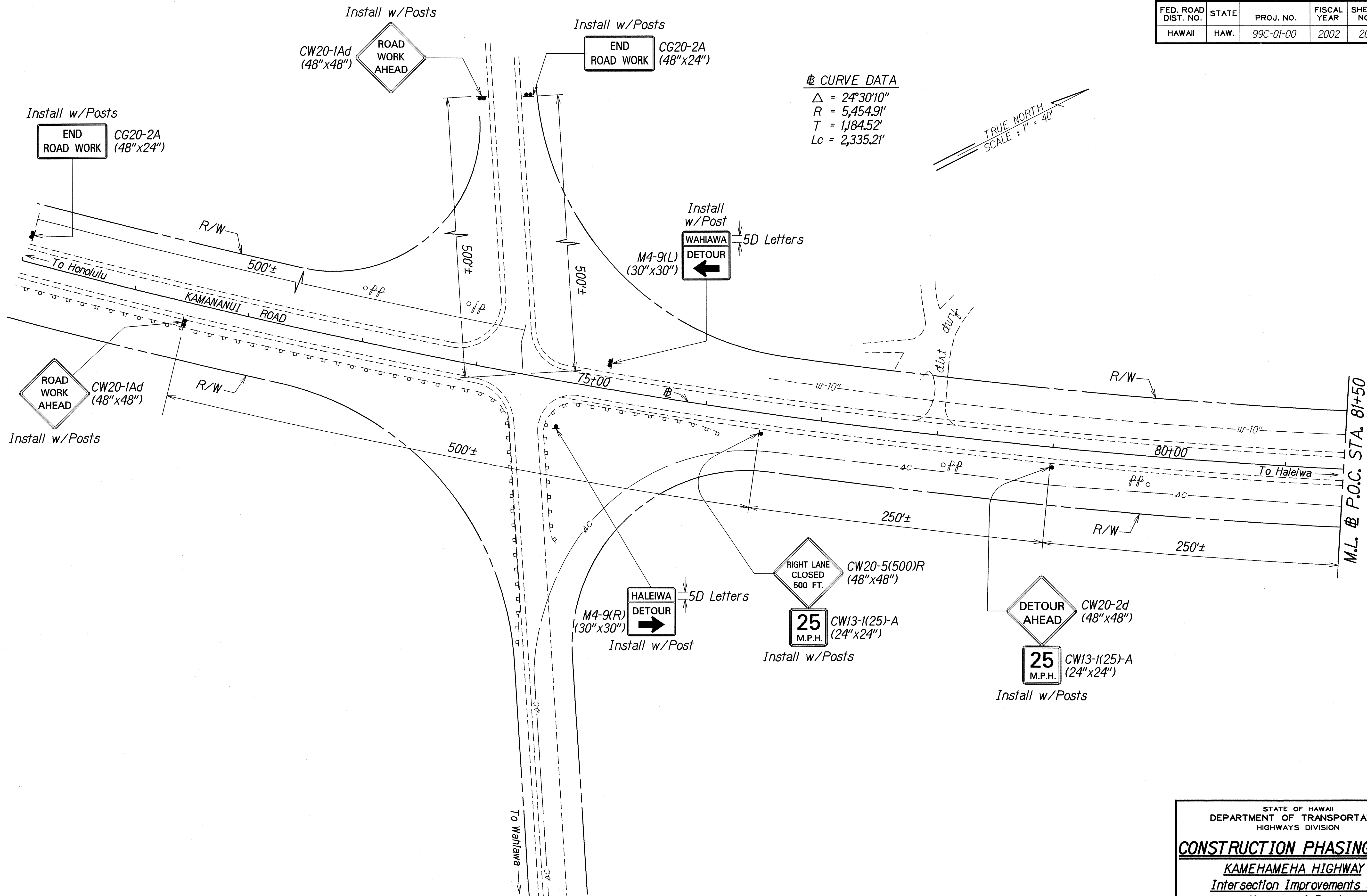
① W = width of lane, shoulder, or offset

ORIGINAL PLAN	SURVEY PLOTTED BY	DATE
NOTE BOOK	DESIGNED BY	10/23/01
QUANTITIES BY	CHECKED BY	

STATE OF HAWAII
DEPARTMENT OF TRANSPORTATION
HIGHWAYS DIVISION
CONSTRUCTION PHASING
NOTES AND TABLE
KAMEHAMEHA HIGHWAY
Intersection Improvements at
Kamalanui Road
Project No. 99C-01-00
Date: Oct. 2001

SHEET No. 1 OF 3 SHEETS

FED. ROAD DIST. NO.	STATE	PROJ. NO.	FISCAL YEAR	SHEET NO.	TOTAL SHEETS
HAWAII	HAW.	99C-01-00	2002	20	21



ORIGINAL PLAN	SURVEY PLOTTED BY	DATE
NOTE BOOK	DRAWN BY	
10/1/00	TRACED BY	
N. Kamananui	QUANTITIES BY	
	CHECKED BY	

STATE OF HAWAII
DEPARTMENT OF TRANSPORTATION
HIGHWAYS DIVISION

CONSTRUCTION PHASING PLAN

KAMEHAMEHA HIGHWAY
Intersection Improvements at
Kamananui Road
Project No. 99C-01-00

Scale: 1" = 40' Date: Oct. 2001

SHEET No. 2 OF 3 SHEETS

CONSTRUCTION PHASING PLAN

KAMEHAMEHA HIGHWAY
Intersection Improvements at
Kanananui Road
Project No. 99C-01-00

Scale: 1" = 40' Date: Oct. 2001

STATE OF HAWAII
DEPARTMENT OF TRANSPORTATION
HIGHWAYS DIVISION

CONSTRUCTION PHASING PLAN

KAMEHAMEHA HIGHWAY
Intersection Improvements at
Kanananui Road
Project No. 99C-01-00

Scale: 1" = 40' Date: Oct. 2001

SHEET No. 3 OF 3 SHEETS

TABLE

FED. ROAD DIST. NO.	STATE	PROJ. NO.	FISCAL YEAR	SHEET NO.	TOTAL SHEETS
HAWAII	HAW.	99C-01-00	2002	21	21

TABLE

FED. ROAD DIST. NO.	STATE	PROJ. NO.	FISCAL YEAR	SHEET NO.	TOTAL SHEETS
HAWAII	HAW.	99C-01-00	2002	21	21

TABLE

FED. ROAD DIST. NO.	STATE	PROJ. NO.	FISCAL YEAR	SHEET NO.	TOTAL SHEETS
HAWAII	HAW.	99C-01-00	2002	21	21

TABLE

FED. ROAD DIST. NO.	STATE	PROJ. NO.	FISCAL YEAR	SHEET NO.	TOTAL SHEETS
HAWAII	HAW.	99C-01-00	2002	21	21

TABLE

FED. ROAD DIST. NO.	STATE	PROJ. NO.	FISCAL YEAR	SHEET NO.	TOTAL SHEETS
HAWAII	HAW.	99C-01-00	2002	21	21

TABLE

FED. ROAD DIST. NO.	STATE	PROJ. NO.	FISCAL YEAR	SHEET NO.	TOTAL SHEETS
HAWAII	HAW.	99C-01-00	2002	21	21

TABLE

FED. ROAD DIST. NO.	STATE	PROJ. NO.	FISCAL YEAR	SHEET NO.	TOTAL SHEETS
HAWAII	HAW.	99C-01-00	2002	21	21

TABLE

FED. ROAD DIST. NO.	STATE	PROJ. NO.	FISCAL YEAR	SHEET NO.	TOTAL SHEETS
HAWAII	HAW.	99C-01-00	2002	21	21

TABLE

FED. ROAD DIST. NO.	STATE	PROJ. NO.	FISCAL YEAR	SHEET NO.	TOTAL SHEETS
HAWAII	HAW.	99C-01-00	2002	21	21

TABLE

FED. ROAD DIST. NO.	STATE	PROJ. NO.	FISCAL YEAR	SHEET NO.	TOTAL SHEETS
HAWAII	HAW.	99C-01-00	2002	21	21

TABLE

FED. ROAD DIST. NO.	STATE	PROJ. NO.	FISCAL YEAR	SHEET NO.	TOTAL SHEETS
HAWAII	HAW.	99C-01-00	2002	21	21

TABLE

FED. ROAD DIST. NO.	STATE	PROJ. NO.	FISCAL YEAR	SHEET NO.	TOTAL SHEETS
HAWAII	HAW.	99C-01-00	2002	21	21

TABLE

FED. ROAD DIST. NO.	STATE	PROJ. NO.	FISCAL YEAR	SHEET NO.	TOTAL SHEETS
HAWAII	HAW.	99C-01-00	2002	21	21

TABLE

FED. ROAD DIST. NO.	STATE	PROJ. NO.	FISCAL YEAR	SHEET NO.	TOTAL SHEETS
HAWAII	HAW.	99C-01-00	2002	21	21

TABLE

FED. ROAD DIST. NO.	STATE	PROJ. NO.	FISCAL YEAR	SHEET NO.	TOTAL SHEETS
HAWAII	HAW.	99C-01-00	2002	21	21

TABLE

FED. ROAD DIST. NO.	STATE	PROJ. NO.	FISCAL YEAR	SHEET NO.	TOTAL SHEETS
HAWAII	HAW.	99C-01-00	2002	21	21

TABLE

FED. ROAD DIST. NO.	STATE	PROJ. NO.	FISCAL YEAR	SHEET NO.	TOTAL SHEETS
HAWAII	HAW.	99C-01-00	2002	21	21

TABLE

FED. ROAD DIST. NO.	STATE	PROJ. NO.	FISCAL YEAR	SHEET NO.	TOTAL SHEETS
HAWAII	HAW.	99C-01-00	2002	21	21

TABLE

FED. ROAD DIST. NO.	STATE	PROJ. NO.	FISCAL YEAR	SHEET NO.	TOTAL SHEETS
HAWAII	HAW.	99C-01-00	2002	21	21

TABLE

FED. ROAD DIST. NO.	STATE	PROJ. NO.	FISCAL YEAR	SHEET NO.	TOTAL SHEETS
HAWAII	HAW.	99C-01-00	2002	21	21

TABLE

FED. ROAD DIST. NO.	STATE	PROJ. NO.	FISCAL YEAR	SHEET NO.	TOTAL SHEETS
HAWAII	HAW.	99C-01-00	2002	21	21

TABLE

FED. ROAD DIST. NO.	STATE	PROJ. NO.	FISCAL YEAR	SHEET NO.	TOTAL SHEETS
HAWAII	HAW.	99C-01-00	2002	21	21

TABLE

FED. ROAD DIST. NO.	STATE	PROJ. NO.	FISCAL YEAR	SHEET NO.	TOTAL SHEETS
HAWAII	HAW.	99C-01-00	2002	21	21

TABLE

FED.

TD2-Traffic Design Section