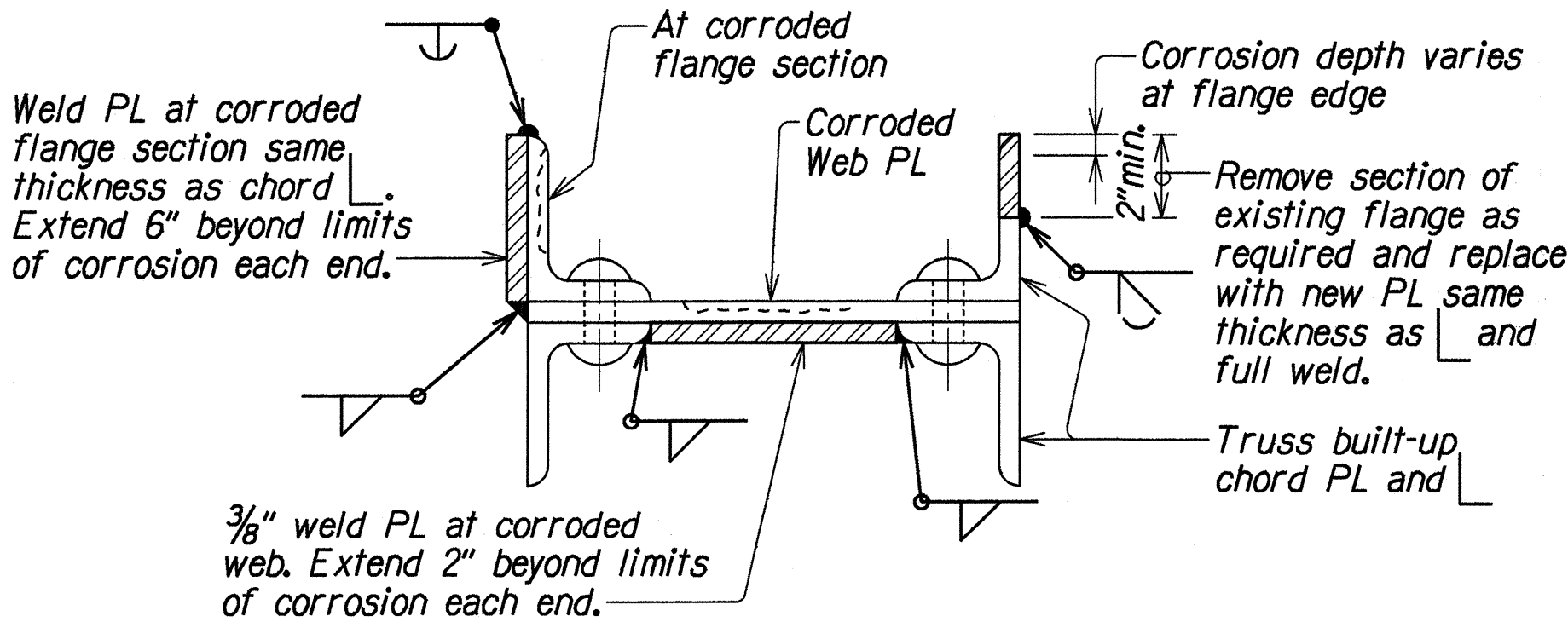
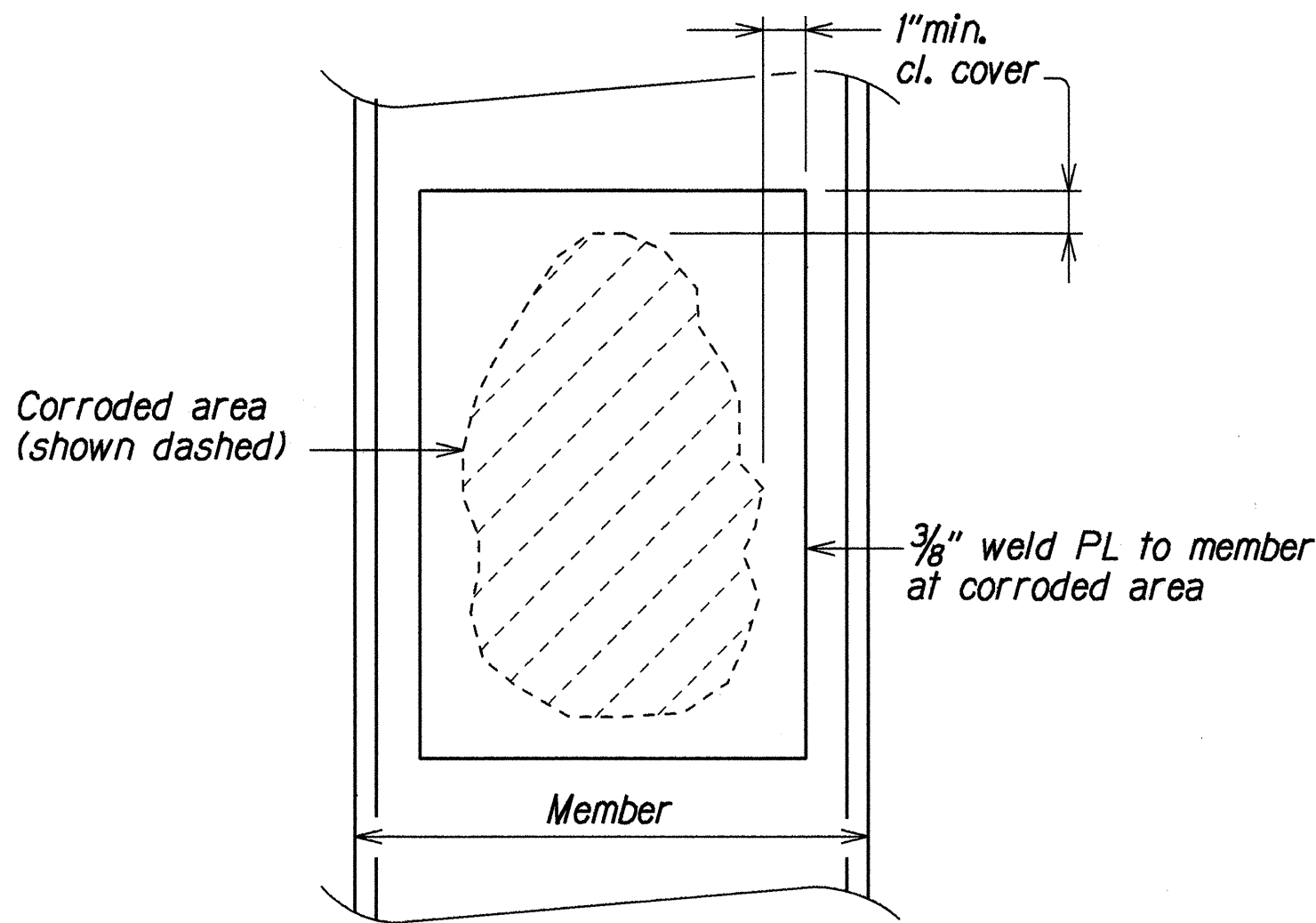


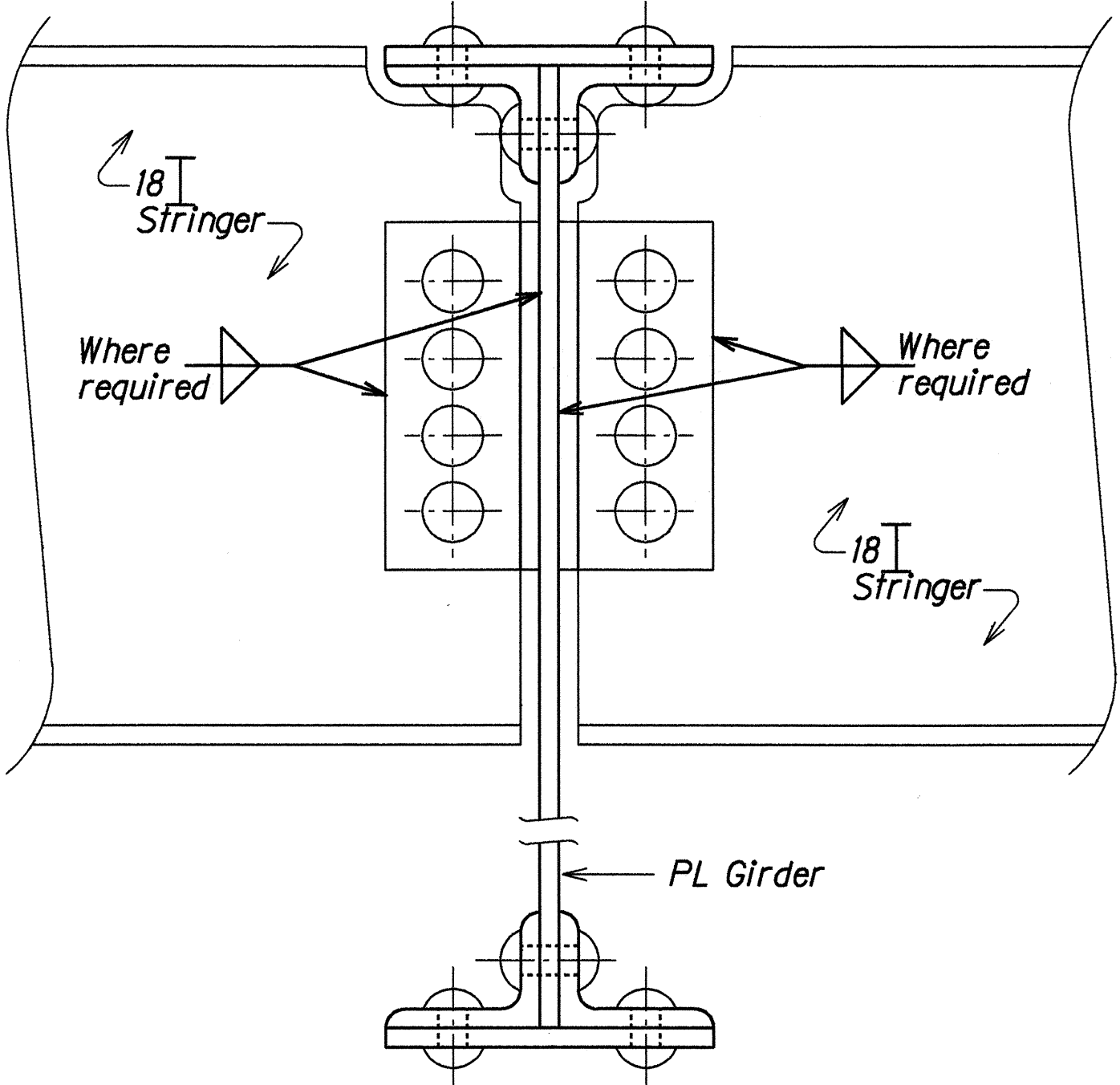
FED. ROAD DIST. NO.	STATE	FED. AID PROJ. NO.	FISCAL YEAR	SHEET NO.	TOTAL SHEETS
HAWAII	HAW.	STP-080-01(111)	1995	4	7



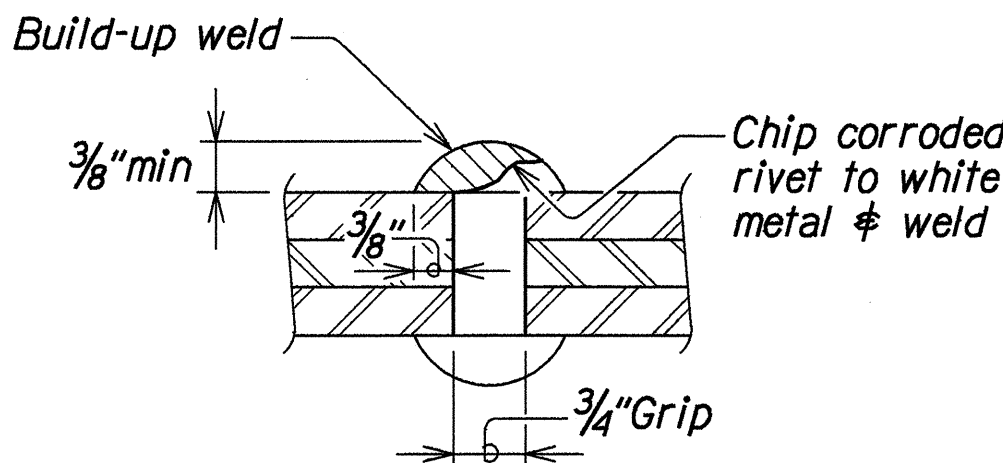
**TYPICAL TRUSS REPAIRS**  
(VERTICAL AND DIAGONAL WEB MEMBERS)  
Scale: 3" = 1'-0"



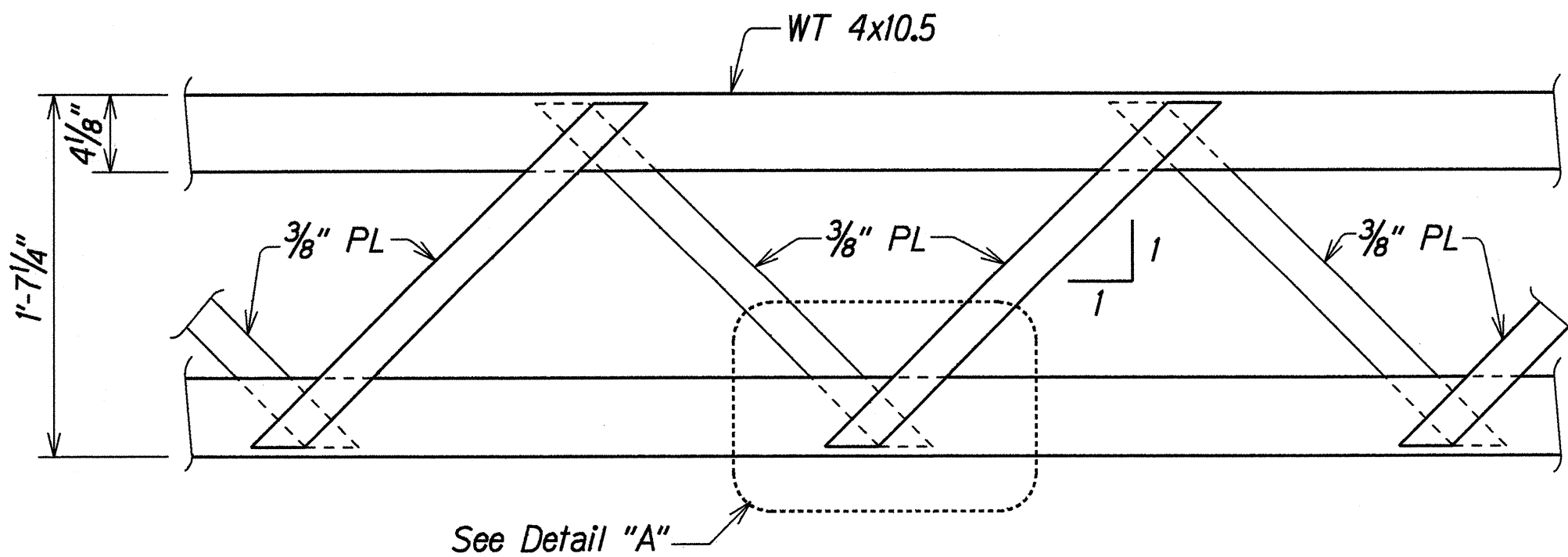
**TYPICAL REPAIR TO CORRODED AREAS OF OTHER MEMBERS**  
Scale: 3" = 1'-0"



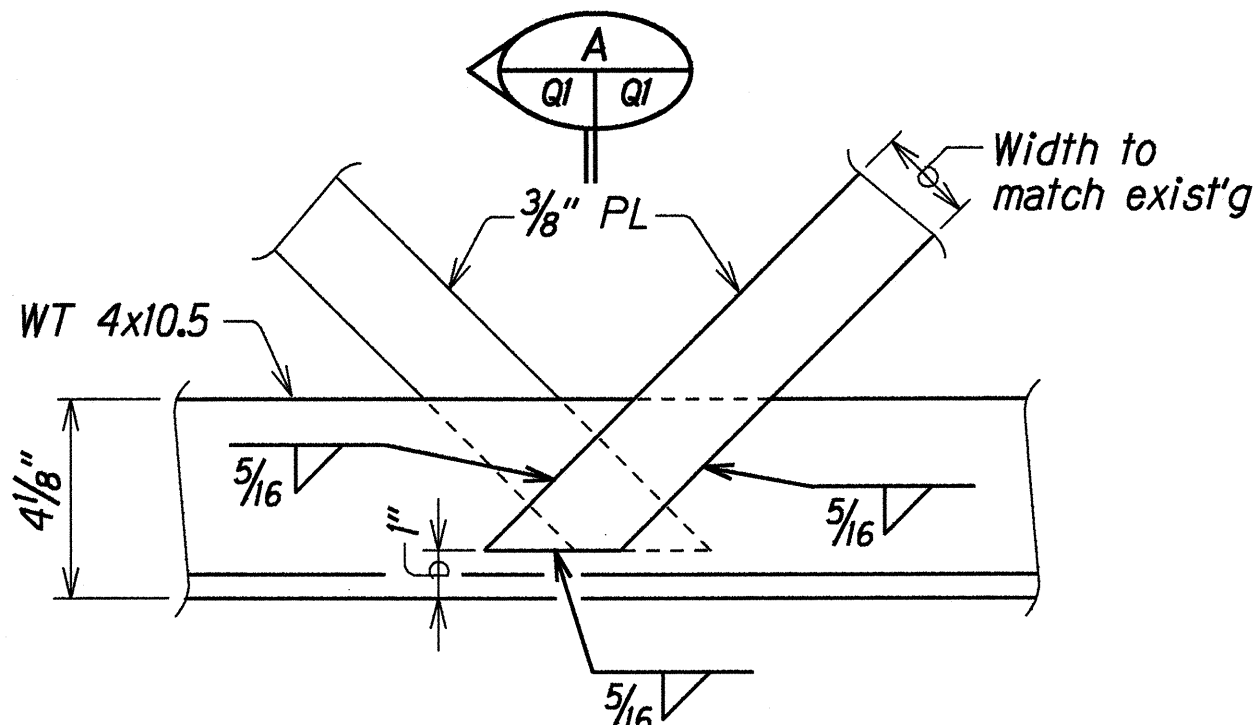
**TYPICAL FLOOR STRINGER CONNECTION AT PL GIRDER**  
Scale: 3" = 1'-0"



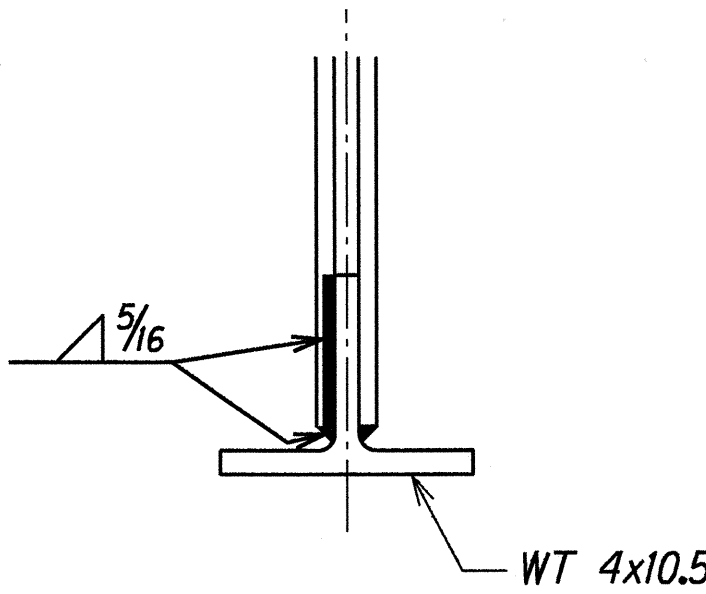
**TYPICAL REPAIRS TO CORRODED RIVET HEADS**  
Scale: 6" = 1'-0"



**PARTIAL ELEVATION**  
Scale:  $1\frac{1}{2}$ " = 1'-0"



**DETAIL "A"**  
Scale: 3" = 1'-0"



**SECTION A**  
Scale: 3" = 1'-0"

**TOP LATERAL BRACING DETAILS**

### ESTIMATED QUANTITIES

ITEM NO.	DESCRIPTION	UNIT	TOTAL
501.000	Replacement of Top Lateral Bracing (including Welds)	L.S.	-
501.2000	Structural Steel other than replacement of Top Lateral Bracing (excluding Welds)	Lbs.	3,000
501.3000	Welds. All sizes as may be required	Lin. Ft.	400
501.4000	Repairing of Rivet Heads	Ea.	200
501.5000	Cleaning and Greasing of Fixed and Expansion Bearing Assemblies	L.S.	-
645.2000	Traffic Control and/or Additional Traffic Control Devices	F.A.	F.A.
695.1000	Cleaning and Painting of Top Chords, Verticals, Diagonals, Sway Bracing, Portal Bracing and Top Lateral Bracing of Karsten Thor Bridge	L.S.	-
695.1100	Cleaning and Painting of Gusset Plates	L.S.	-
695.1200	Cleaning and Painting of Miscellaneous Areas	Sq. Ft.	500

ORIGINAL PLAN	DATE	BY	CHECKED BY
NOTED BY	MAR 1995	KBY	KBY
QUANTITIES BY	MAR 1995	KBY	KBY
CHECKED BY	MAR 1995	KBY	KBY
DATE	MAR 1995	BY	CHECKED BY
NOTED BY	MAR 1995	KBY	KBY
QUANTITIES BY	MAR 1995	KBY	KBY
CHECKED BY	MAR 1995	KBY	KBY

STATE OF HAWAII  
DEPARTMENT OF TRANSPORTATION  
HIGHWAYS DIVISION

**TYPICAL REPAIR DETAILS**  
KAMEHAMEHA HIGHWAY  
Repair of Karsten Thor Bridge  
Fed. Aid Proj. No. STP-080-1(111)

Scale: As Noted  
Date: May, 1995