

FED. ROAD DIST. NO.	STATE	FED. AID PROJ. NO.	FISCAL YEAR	SHEET NO.	TOTAL SHEETS
HAWAII	HAW.	STP-080-1(10)	1994	12	17

NOTES:

1. The Contractor shall relocate the existing Street Name Sign onto the New Traffic Signal Mast Arm using the two (2) existing Swing Sign Brackets and an additional Swing Sign Bracket with Aluminum Angle on the following existing Street Name Signs. Each relocated sign shall have three (3) Swing Sign Brackets (2 existing & 1 new).

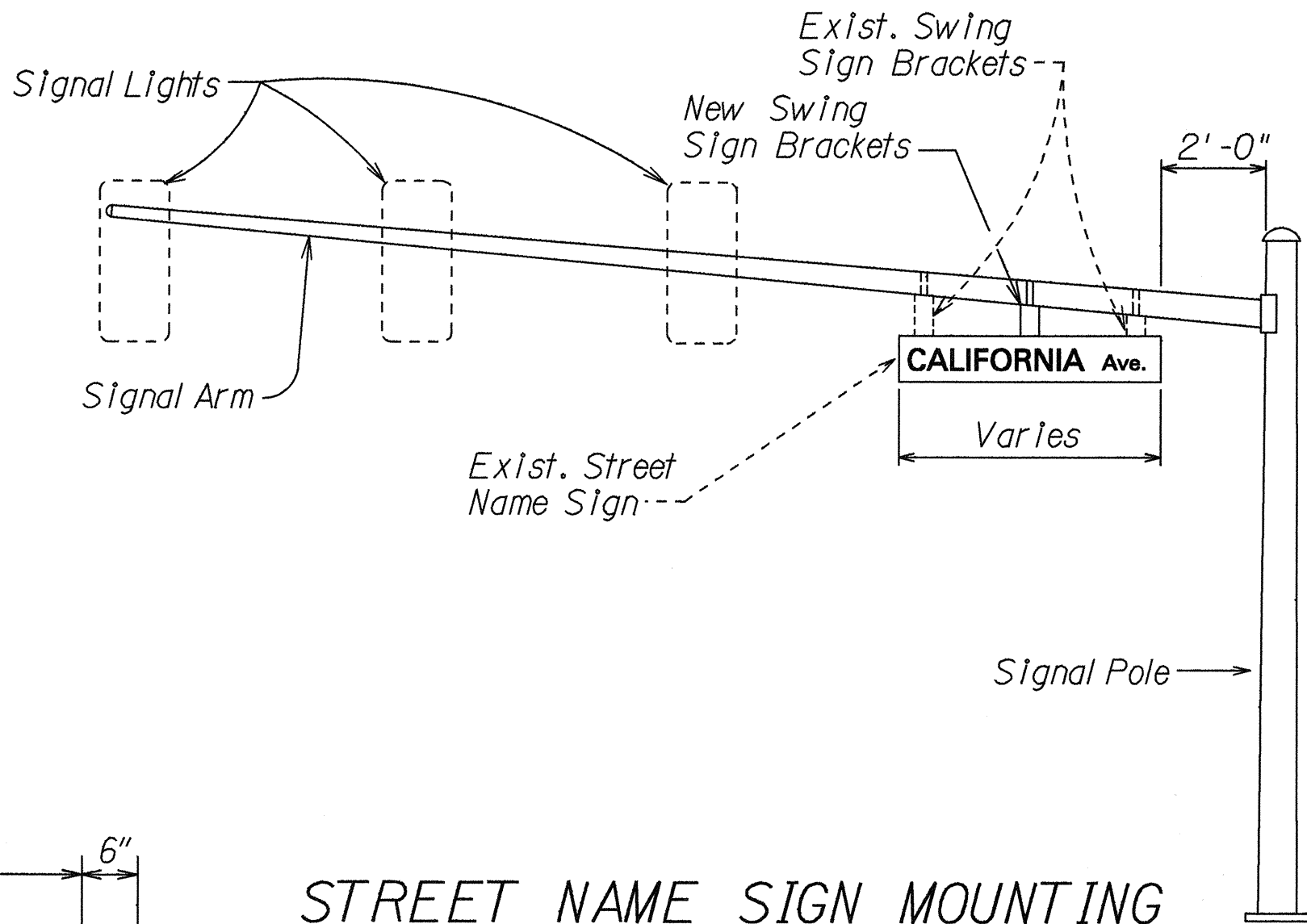
Street Name	No. of Signs	No. of Brackets w/Aluminum Angle
OLIVE Ave.	2	2
CALIFORNIA Ave.	2	2
KILANI Ave.	2	2
TOTAL	6	6

2. The accepted quantities of Swing Sign Brackets w/Aluminum Angle will be paid for at the contract unit price per each, complete in place. The contract unit price paid shall be full compensation for relocating the existing sign with the two (2) existing Swing Sign Brackets, the additional Swing Sign Bracket w/Aluminum Angle for all necessary hardware, equipment, tools, labor, materials, and other incidentals for the installation of the Existing Street Name Sign on the New Traffic Signal Mast Arm.

3. The Swing Sign Brackets w/Aluminum Angle shall be paid under Item No. 621.0220, Relocating Existing Street Name Sign on Traffic Signal Mast Arm.

4. Sign D3-1 shall be a new Street Name Sign. The Contractor shall provide the same message on the front and back side of the sign. Payment will not be made separately but shall be considered as one unit.

- a. Colors:
- Legend - White (Reflectorized)
  - Background - Green (Reflectorized)
- b. All panels shall be reflectorized with Type B reflective sheeting in accordance with Section 712.20 of the Standard Specifications.
- c. Borders and messages shall conform to details as shown on the plans and as specified in the MUTCD.
- d. Sign mounting brackets, fixtures, fasteners, and all necessary hardware, and equipment, tools, labor, materials and other incidentals for installation, will not be paid for separately but shall be considered incidental to street name sign installation.



STREET NAME SIGN MOUNTING ON MAST ARM

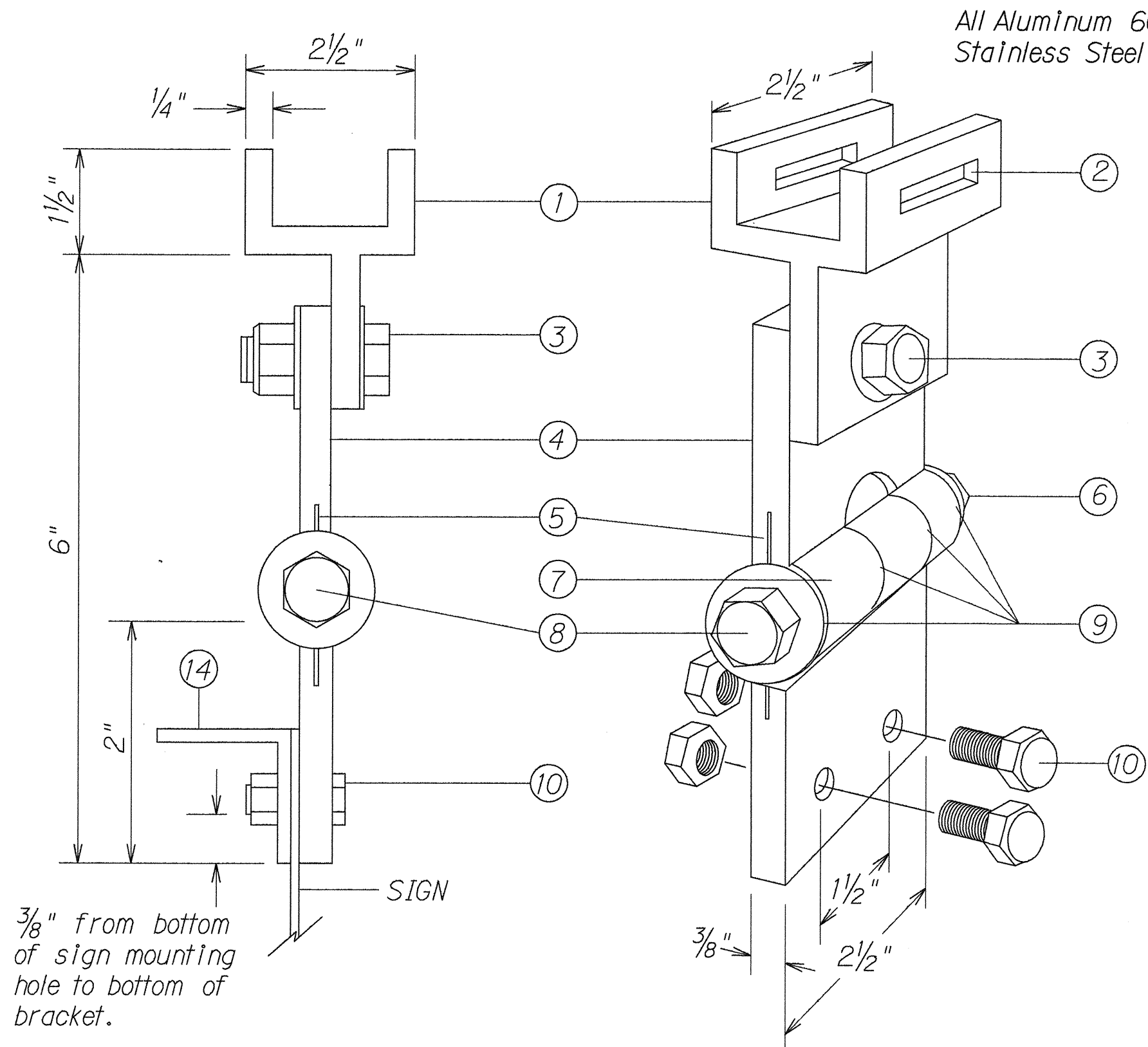
STATE OF HAWAII  
DEPARTMENT OF TRANSPORTATION  
HIGHWAYS DIVISION

**SWING SIGN BRACKET DETAIL**

KAMEHAMEHA HIGHWAY IMPROVEMENTS  
Wilson Bridge to Kilani Ave.  
FED. AID PROJECT NO. STP-080-1(10)

Not to Scale
Date: Nov., 1993

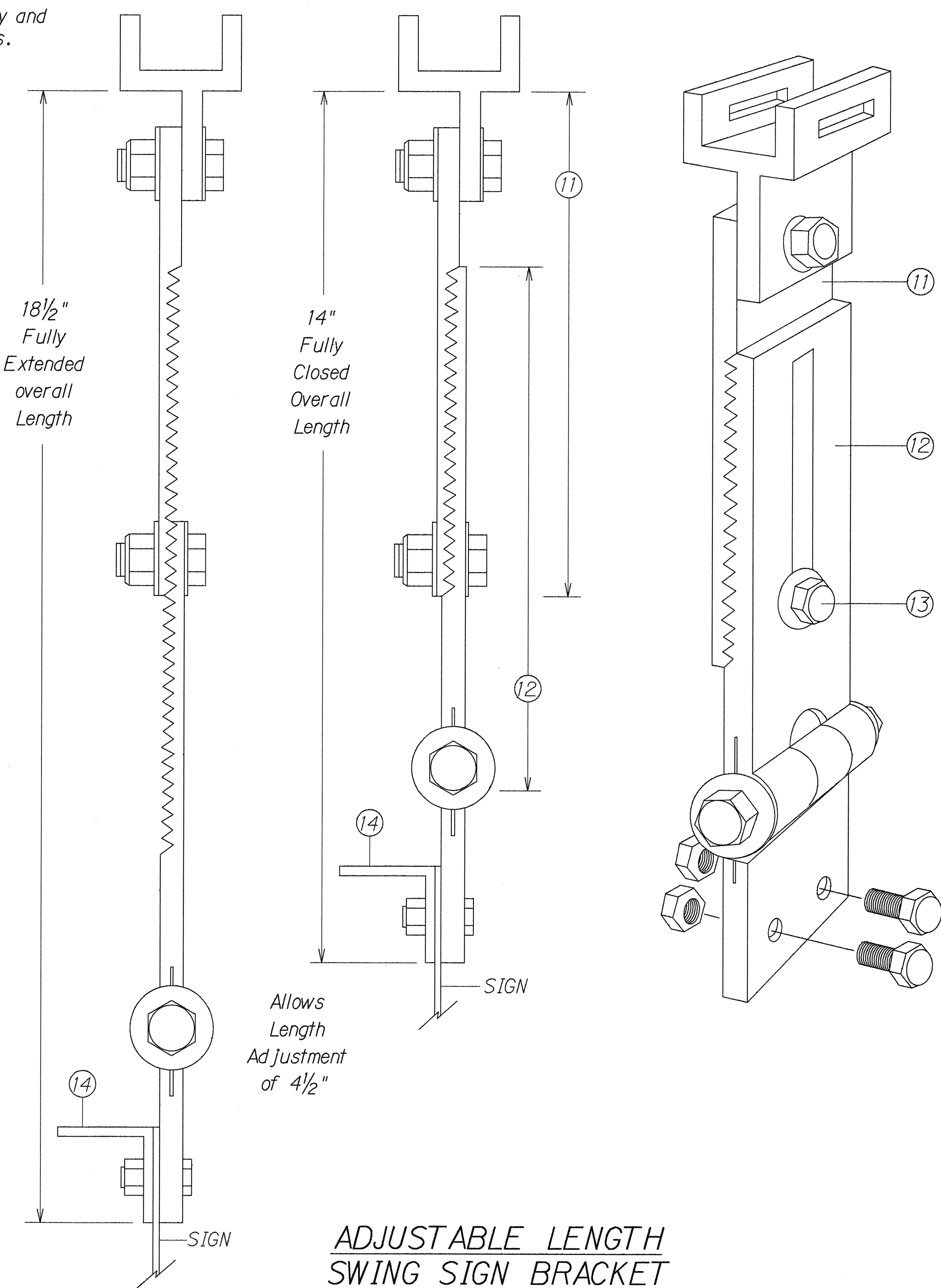
SHEET No. 1 OF 1 SHEETS



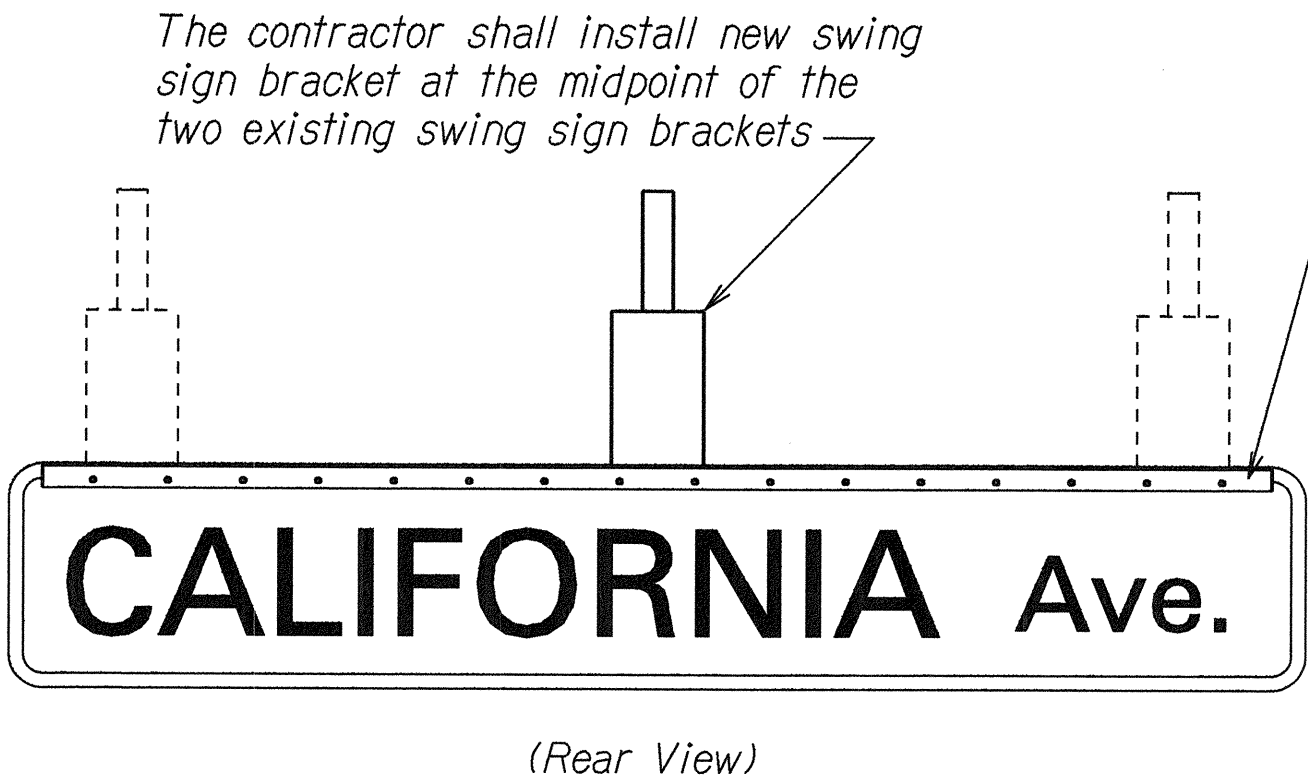
FIXED LENGTH NON-ADJUSTABLE SWING SIGN BRACKET

- Pivotal Upper Bracket
- 1 5/8" x 1/4" Slot for double strapping to electrolier mast arm. (M2G-34S(HD) .030" x 3/4" Heavy Duty Stainless Steel Strap with M2G-34B(HD) Buckle recommended.)
- 1/2" - 13 x 1 1/2" Stainless Steel Hex Head Bolt with Stainless Steel Hex Lock Nut and 1/16" Stainless Steel Washer (both sides). Allows upper bracket to pivot and align with electrolier mast arm.
- 6" Overall drop with Fixed Length Sign Bracket
- Stainless Steel Dampener Spring (Removable)
- Stainless Steel Hex Lock Nut with 1/16" Stainless Steel Washer
- 1" O.D. Axle Housing
- 1/2" - 13 x 4" Stainless Steel Hex Head Bolt with 1/16" Stainless Steel Washer
- Ollite Bushing
- Sign Mounting Sets, consisting of two each 5/16" - 18 x 1" Stainless Steel Hex Head Bolt with Stainless Steel Hex Lock Nut. Two holes on 1 1/2" centers provide positive lock sign mounting to bracket.
- 8 1/4" overall length Upper Adjustable Sign Bracket section
- 9" overall length Lower Adjustable Sign Bracket section, including Axle Housing (8" overall length to top of Axle Housing)
- 1/2" - 13 x 1 1/2" Stainless Steel Hex Bolt with Stainless Steel Hex Lock Nut and 1/16" Stainless Steel Washers (both sides). Loosen lock nut, adjust bracket teeth to level sign.
- 1 1/4" x 1 1/4" x 1/8" Aluminum Angle

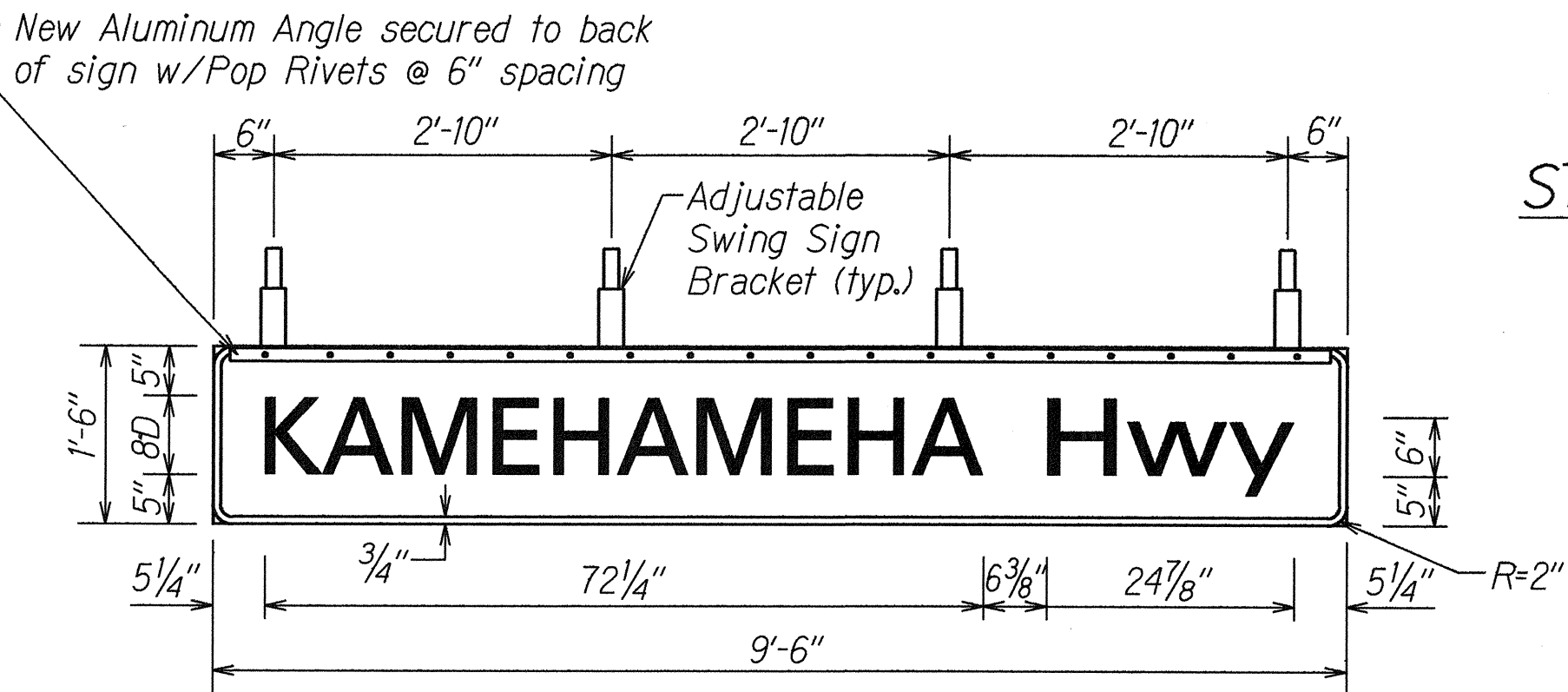
Note: Dimensions may vary slightly.



ADJUSTABLE LENGTH SWING SIGN BRACKET



TYPICAL SWING BRACKET LAYOUT



D3-1 (Rear View)  
Not to Scale

ORIGINAL PLAN  
DATE:

SURVEY PLOTTED BY  
DRAWN BY  
CHECKED BY

NOTE BOOK  
TABLES  
QUANTITIES BY  
CHECKED BY