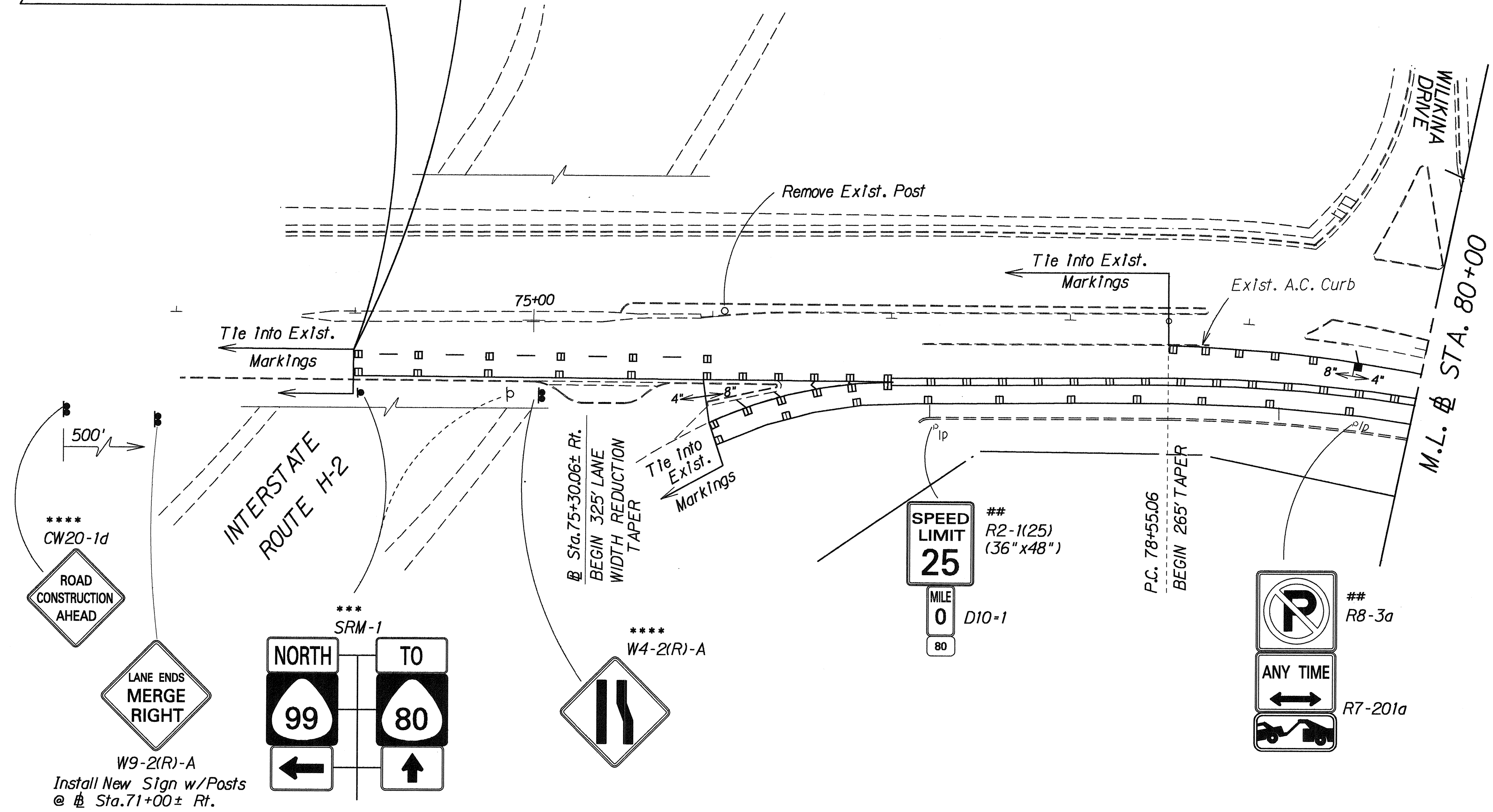


FED. ROAD DIST. NO.	STATE	FED. AID PROJ. NO.	FISCAL YEAR	SHEET NO.	TOTAL SHEETS
HAWAII	HAW.	STP-080-1(10)	1994	4	17

TRUE NORTH
SCALE: 1" = 40'

BEGIN PROJECT
FED. AID PROJ. NO. STP-080-1(10)
@ Sta. 74+00±



KEY:

- * Exist. Sign(s) & Post(s) to Remain
- ** Remove Exist. Sign(s) & Post(s)
- *** Remove Exist. Sign(s) & Post(s) & Install New Sign(s) w/Post(s)
- **** Install New Sign(s) w/Post(s)
- # Install New Sign(s) on Light Standard
- ## Remove Exist. Sign(s) & Install New Sign(s) on Light Standard

ORIGINAL PLAN	SURVEY PLOTTED BY	DATE
NOTED BOOK	TRACED BY	
DESIGNED BY	QUANTITIES BY	
CHECKED BY		

STATE OF HAWAII
DEPARTMENT OF TRANSPORTATION
HIGHWAYS DIVISION

**PAVEMENT MARKING
& SIGNING PLAN**

KAMEHAMEHA HIGHWAY IMPROVEMENTS
Wilson Bridge to Kilani Ave.
FED. AID PROJECT NO. STP-080-1(10)

Scale: 1"=40' Date: Nov., 1993

SHEET No. 1 OF 3 SHEETS

