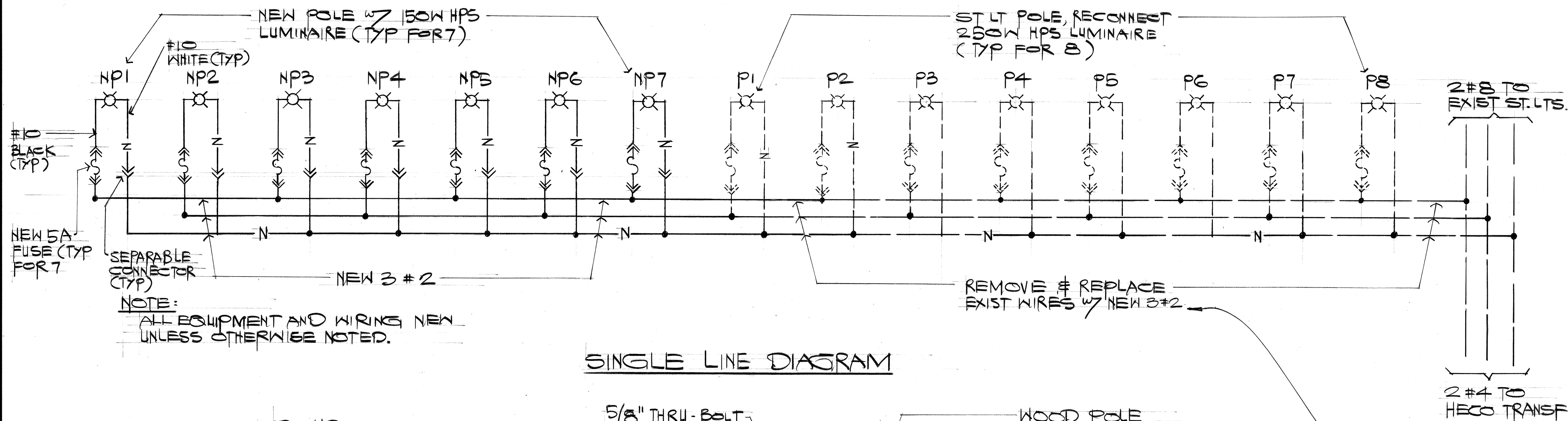
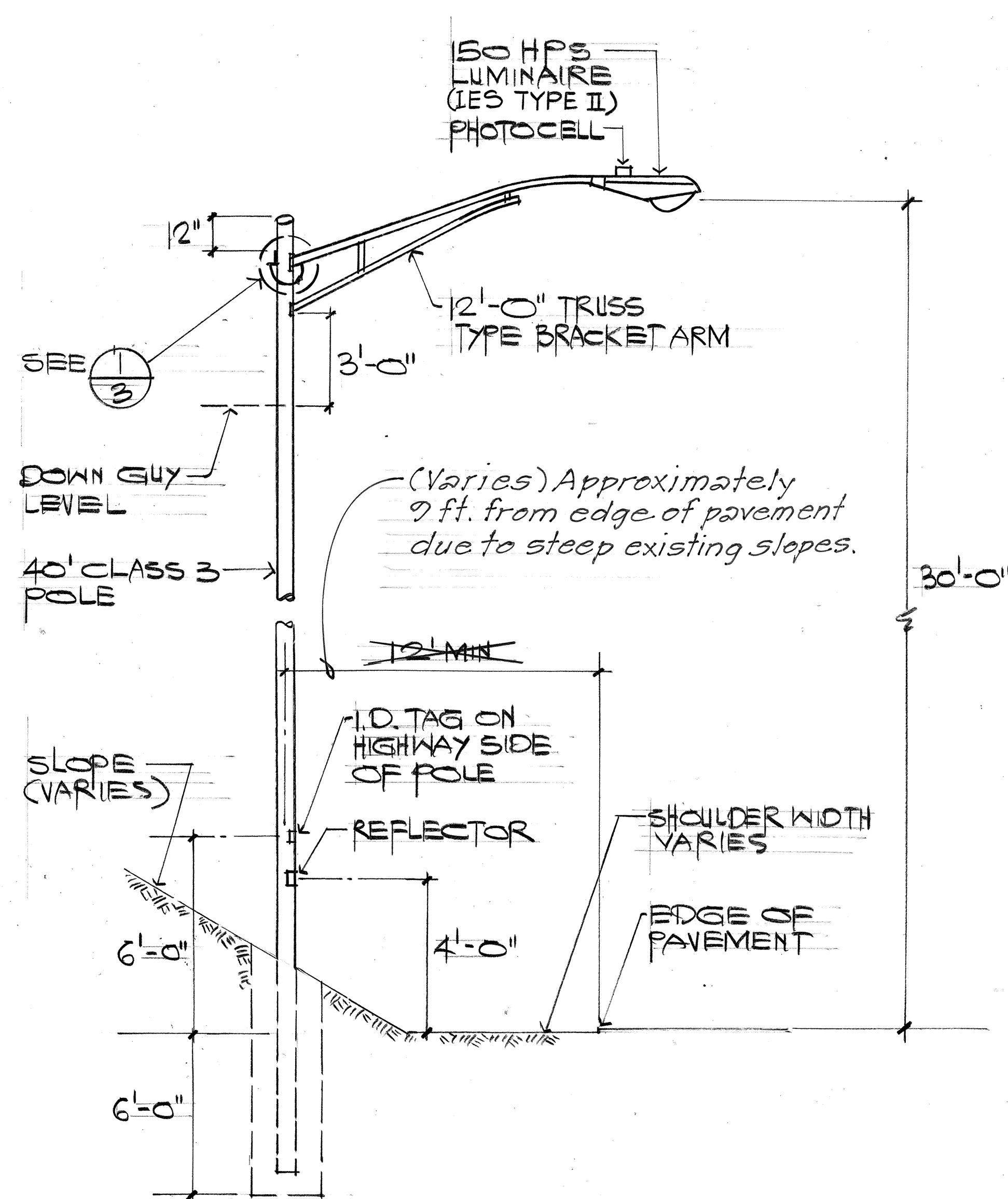


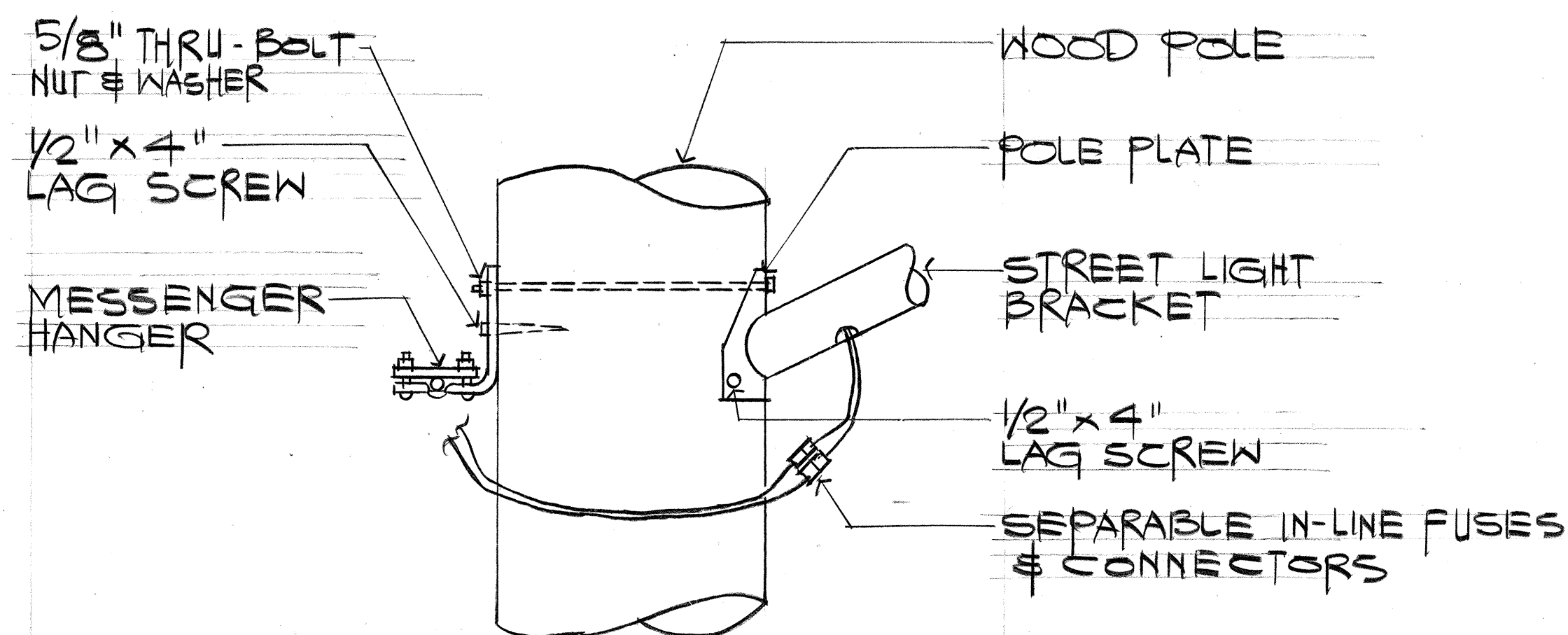
FED. ROAD DIST. NO.	STATE	PROJ. NO.	FISCAL YEAR	SHEET NO.	TOTAL SHEETS
HAWAII	HAW.	80B-01-87	1988	3	3



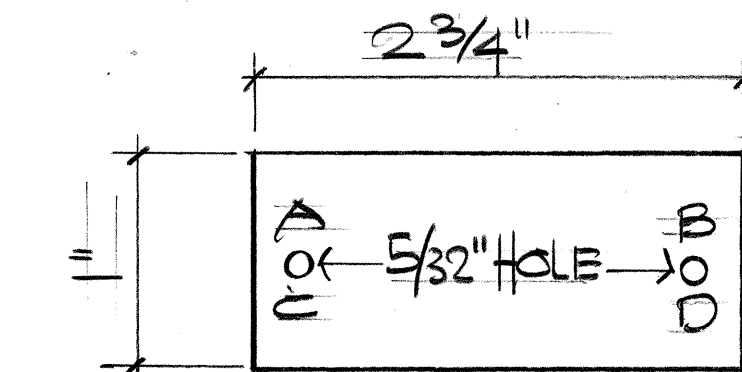
SINGLE LINE DIAGRAM



TYPICAL WOOD POLE ELEVATION  
N.T.S.



1 DETAIL  
3 N.T.S.



- LEGEND:
- A = CONTRACT NUMBER
  - B = LIGHT NUMBER (NOTE: FOR NUMBER SEE PLAN)
  - C = LAMP DATA: #150W
  - D = REFRACTOR DATA: TYPE NO. II MEDIUM CUTOFF

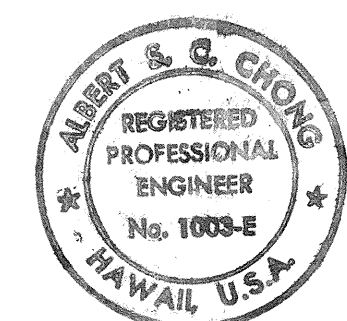
- NOTES:
1. TAG - MAKE FROM PLASTIC SHEET (GRAVOFLEX/3 PLY) LAMINATED BLACK-WHITE-BLACK
  2. MOUNTING HEIGHT OF TAG = 6'-0" FROM FINISH GRADE
  3. LETTERS - NO.5 REDUCTION, 1/5, STENCILLED
  4. ATTACH TO WOOD POLE WITH NO. 7 4D NAILS

IDENTIFICATION TAG DETAIL  
N.T.S.

NOTE

The State's Highway Maintenance Section repaired a short circuit in the existing lighting system before this project's acceptance and some of the new wiring system may have been modified also.

SURVEY PLOTTED BY	DATE
DRAWN BY	
DESIGNED BY	
QUANTITIES BY	
CHECKED BY	



THIS WORK WAS PREPARED BY ME OR UNDER MY SUPERVISION

Albert & Chong

STATE OF HAWAII  
DEPARTMENT OF TRANSPORTATION  
HIGHWAYS DIVISION

STREET LIGHT POLE & DETAILS

KAM HIGHWAY STREET LIGHTS

KARSTEN THOT BRIDGE TO WHITMORE AVENUE

PROJECT NO. 80B-01-87

DISTRICT OF WAHIAWA, ISLAND OF OAHU

SCALE: AS SHOWN

DATE: Feb., 1988

SHEET No. 2 OF 2 SHEETS