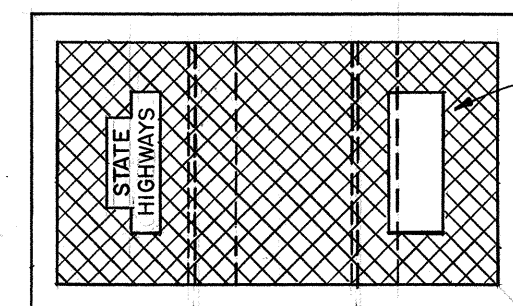


FED. ROAD DIST. NO.	STATE	FED. AID PROJ. NO.	FISCAL YEAR	SHEET NO.	TOTAL SHEETS
HAWAII	HAW.	RS6-804(1)	1981	2	15

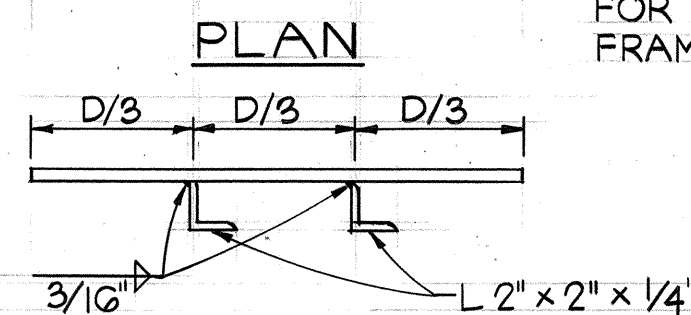
## CONSTRUCTION NOTES

- LOCATIONS OF EXISTING UNDERGROUND STRUCTURES AND UTILITIES, SUCH AS PIPELINES, CONDUITS, CABLES, ETC., SHOWN ON PLANS ARE APPROXIMATE ONLY. IT IS NOT THE INTENT OF THESE PLANS TO SHOW THE EXACT LOCATION OF ALL UNDERGROUND UTILITIES AND STRUCTURES. IT IS THE RESPONSIBILITY OF THE CONTRACTOR TO VERIFY THE LOCATIONS OF ALL EXISTING UTILITIES WITH THE RESPECTIVE OWNERS. EXISTING UTILITIES DAMAGED BY THE CONTRACTOR SHALL BE REPAIRED BY THE CONTRACTOR AT HIS OWN COST.
- THE LOCATIONS OF THE TRAFFIC SIGNAL STANDARDS, TRAFFIC SIGNAL STANDARDS WITH MAST-ARM, TRAFFIC CONTROLLER, PULLBOXES, CONDUITS AND TRAFFIC DETECTORS SHALL BE STAKED OUT IN THE FIELD BY THE CONTRACTOR AND APPROVAL OF THE LOCATIONS OBTAINED FROM THE ENGINEER PRIOR TO CONSTRUCTION AND INSTALLATION.
- ALL TRAFFIC SIGNAL WORK SHALL CONFORM TO THE REQUIREMENTS OF THE "MANUAL ON UNIFORM TRAFFIC CONTROL DEVICES FOR STREETS AND HIGHWAYS", FEDERAL HIGHWAY ADMINISTRATION (1978) AND AMENDMENTS.
- DEPARTMENT OF TRANSPORTATION SERVICES, CITY AND COUNTY OF HONOLULU, WILL ASSIST THE ENGINEER IN CONSTRUCTION INSPECTION FOR THE TRAFFIC SIGNAL SYSTEM.
- WORK BY THE DEPARTMENT OF TRANSPORTATION SERVICES, CITY AND COUNTY OF HONOLULU:
  - TEST CONTROLLER AND AUXILIARY EQUIPMENT IN CABINET.
  - MAKE ALL ELECTRICAL CONNECTIONS IN THE FIELD FOR SIGNAL SYSTEM AFTER THE SYSTEM HAS BEEN INSTALLED IN PLACE BY THE CONTRACTOR.
  - FINAL ADJUSTMENT OF TRAFFIC SIGNAL CONTROL EQUIPMENT.
- REMOVAL OF EXISTING SIGNS SHALL ALSO INCLUDE THE REMOVAL OF POSTS AND FOUNDATIONS UNLESS OTHERWISE NOTED. ALL SUCH MATERIALS SHALL BE THE PROPERTY OF THE CONTRACTOR. COSTS SHALL BE INCIDENTAL TO OTHER ITEMS OF WORK.
- LOCATIONS OF TRAFFIC MARKINGS AND MARKERS (LANE LINES, STOP LINES, PAV'T, ARROWS, ETC.) SHOWN ON THE PLANS SHALL BE VERIFIED BY THE CONTRACTOR WITH THE ENGINEER PRIOR TO THE INSTALLATION OF THE TRAFFIC SIGNAL SYSTEM.
- REMOVAL OF PAVEMENT MARKINGS AND STRIPINGS SHALL BE DONE BY THE CONTRACTOR.
- A SOLID #8 BARE COPPER WIRE SHALL BE PULLED WITH THE TRAFFIC SIGNAL CONTROL CABLE FOR EQUIPMENT GROUND. COST SHALL BE INCIDENTAL TO THE INSTALLATION OF THE CONTROL CABLE.
- STOP SIGN INDICATED TO BE REMOVED SHALL BE REMOVED AFTER THE TRAFFIC SIGNAL SYSTEM IS OPERATIONAL.
- MAINTENANCE OF TRAFFIC THROUGH THE CONSTRUCTION AREA SHALL BE IN ACCORDANCE WITH PART VI OF THE "MANUAL ON UNIFORM TRAFFIC CONTROL DEVICES FOR STREETS AND HIGHWAYS", FEDERAL HIGHWAY ADMINISTRATION (1978) AND AS SPECIFIED IN THE SPECIAL PROVISIONS. THE CONTRACTOR SHALL FURNISH AND MAINTAIN ADEQUATE BARRICADES, BLINKERS, CONSTRUCTION SIGNS, ETC. FOR THE SAFETY OF THE MOTORING PUBLIC.



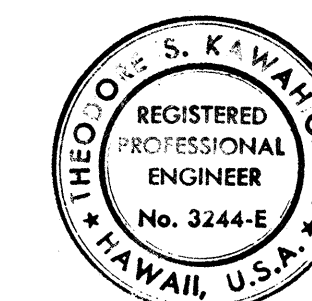
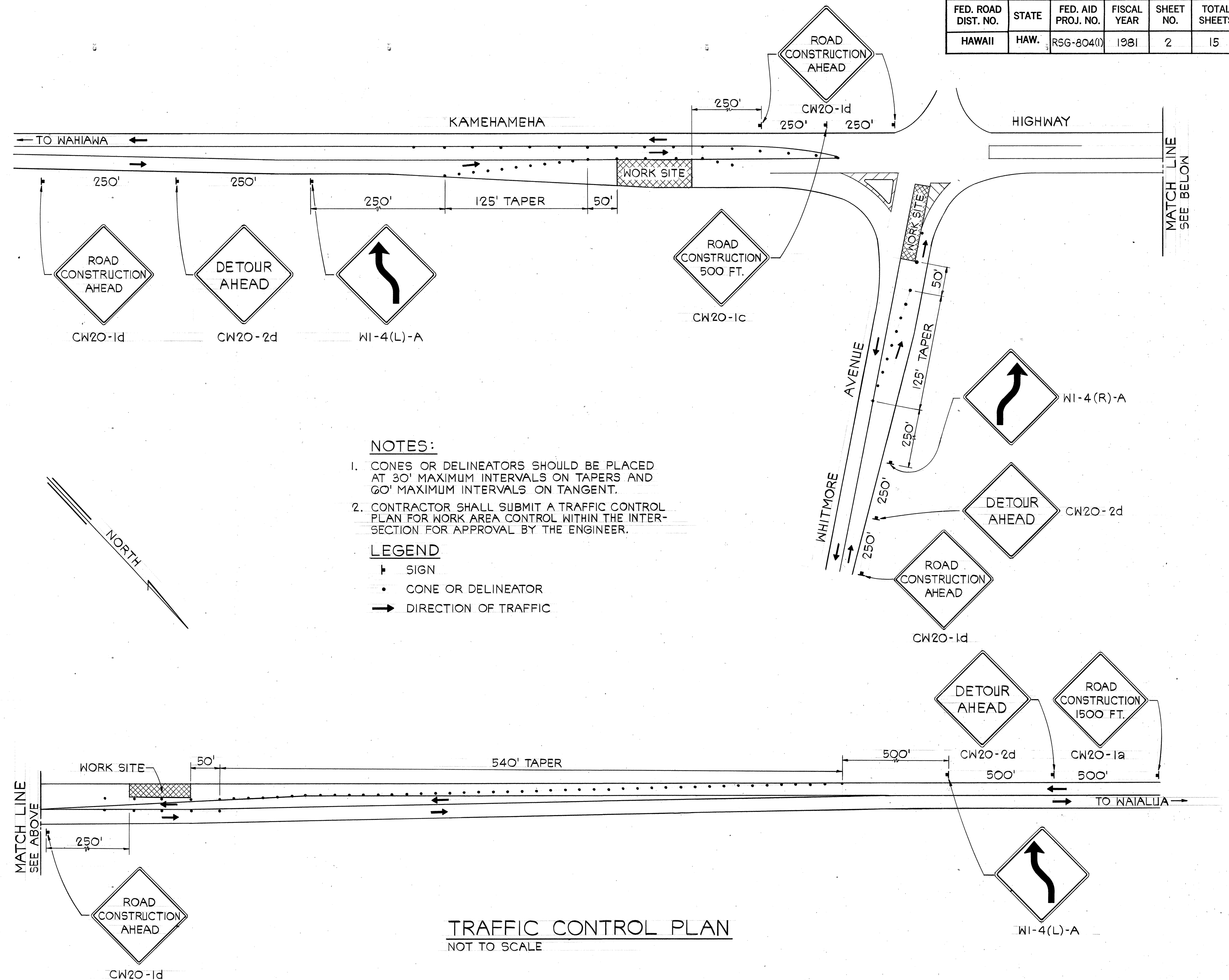
3/8" ROLLED STEEL  
PLATE W/ NON-SLIP  
ABRASIVE SURFACING  
(STANDARD STATE HWY. COVER)

SEE DT 401, SHEET NO. 11  
FOR TYPE "B" PULLBOX  
FRAME & COVER DETAILS



## COVER DETAIL MODIFIED TYPE "B" PULLBOX NOT TO SCALE

NOTE:  
HOT-DIP GALVANIZE COVER  
AFTER FABRICATION.



THIS WORK WAS PREPARED BY ME  
OR UNDER MY SUPERVISION  
*Theodore S. Kawahigashi*  
Signature

STATE OF HAWAII  
DEPARTMENT OF TRANSPORTATION  
HIGHWAYS DIVISION

KAMEHAMEHA HIGHWAY  
TRAFFIC SIGNALS AT  
WHITMORE AVENUE  
FED. AID PROJ. NO. RS6-804(1)

TRAFFIC CONTROL PLAN  
AND NOTES

SCALE: AS SHOWN DATE: 7-30-80

SHEET No. 1 OF 1 SHEETS