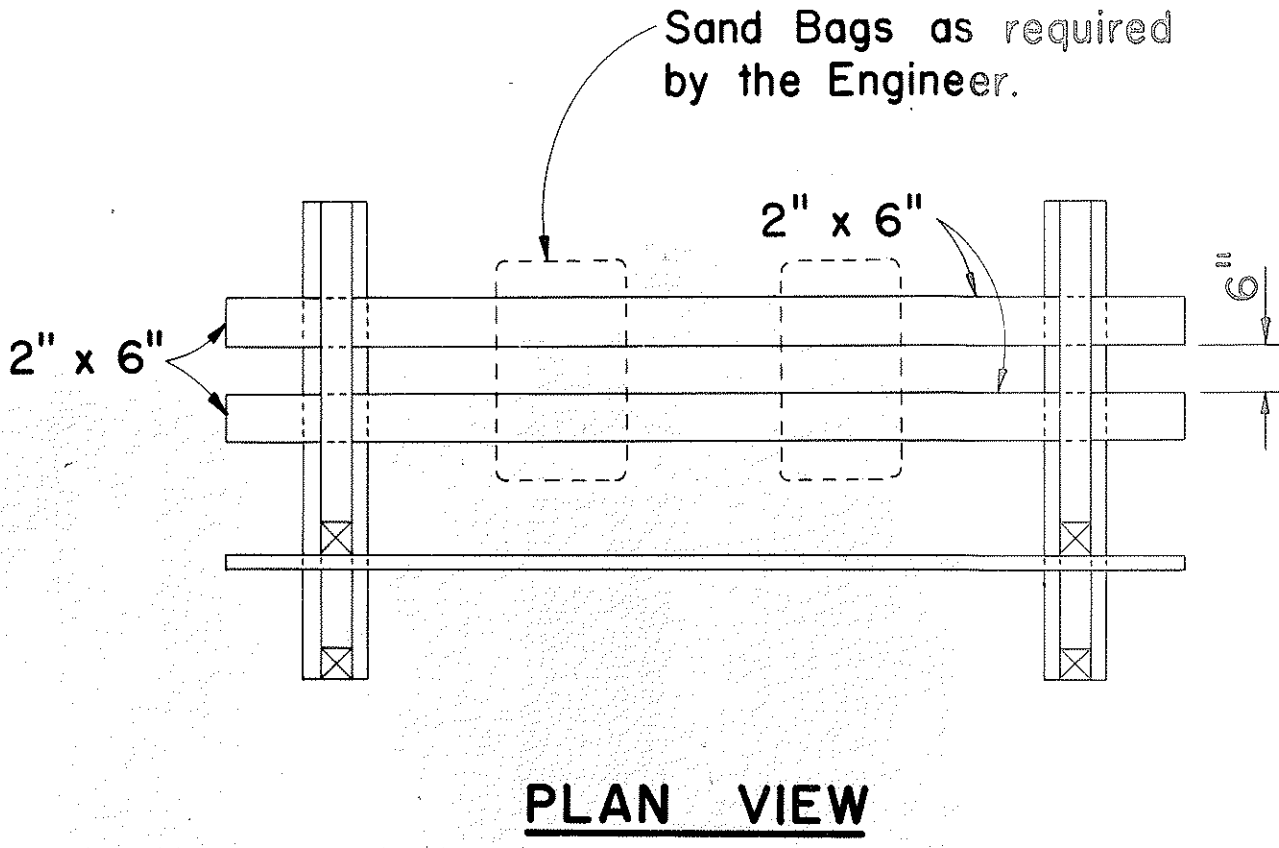
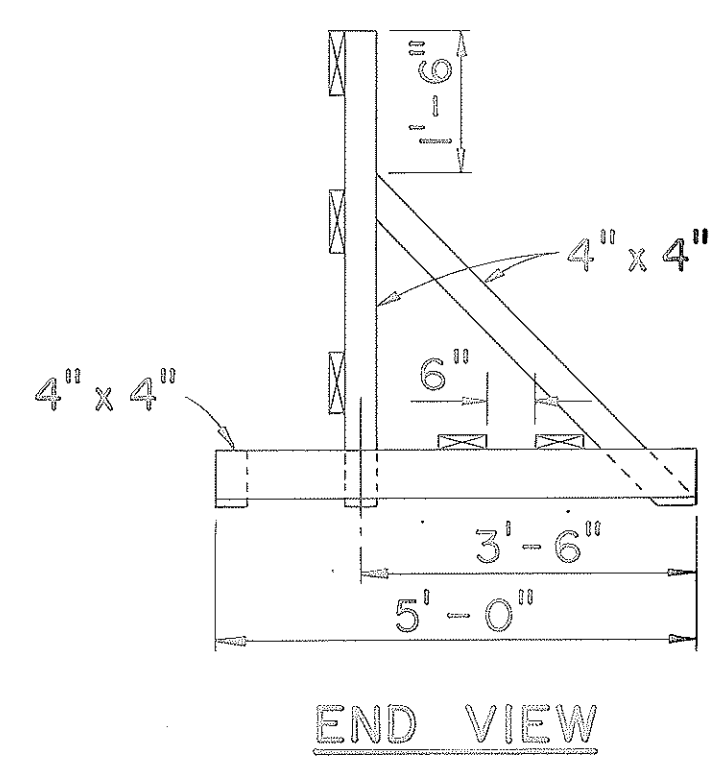
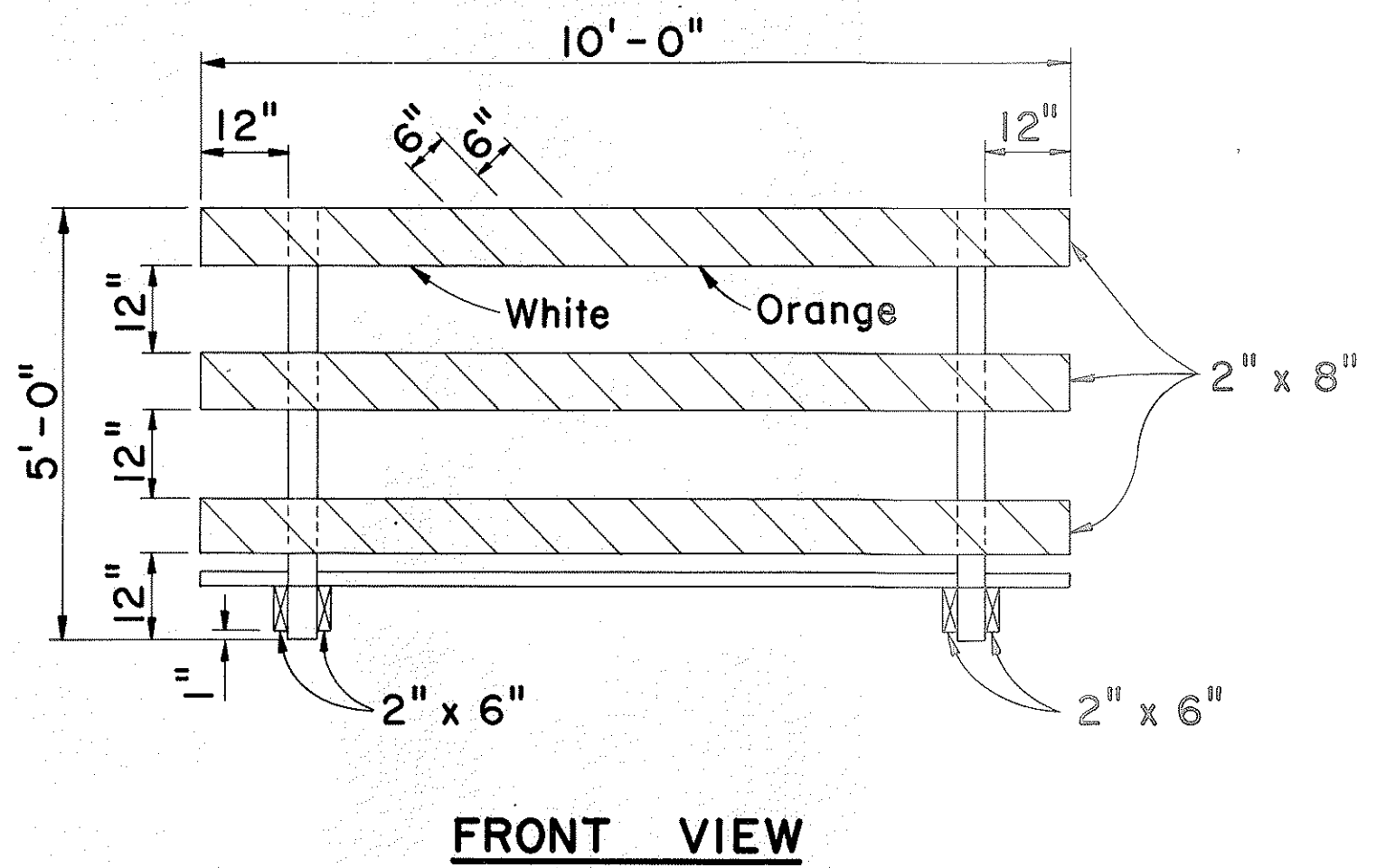


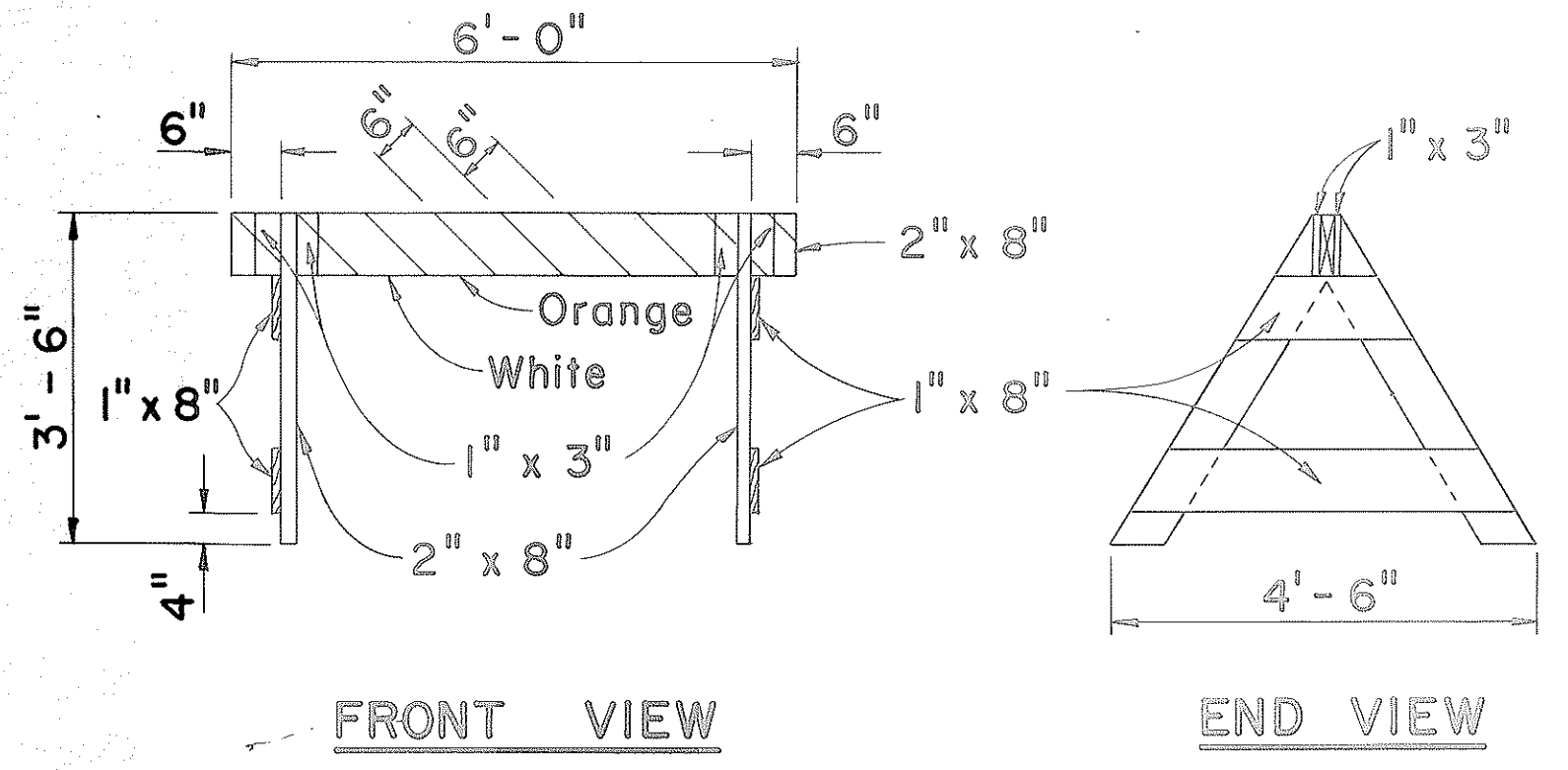
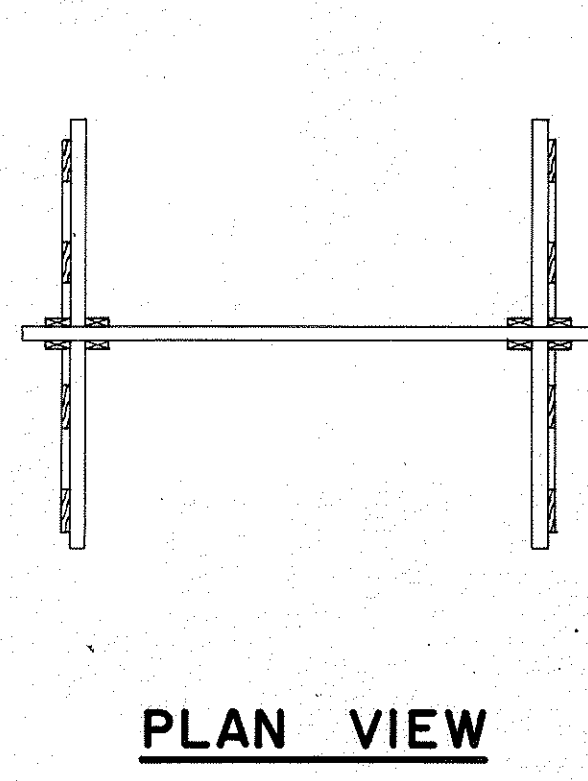
FED. ROAD DIST. NO.	STATE	FED. AID PROJ. NO.	FISCAL YEAR	SHEET NO.	TOTAL SHEETS
HAWAII	HAW.	BR-F-080-1(7)	1977	58	165



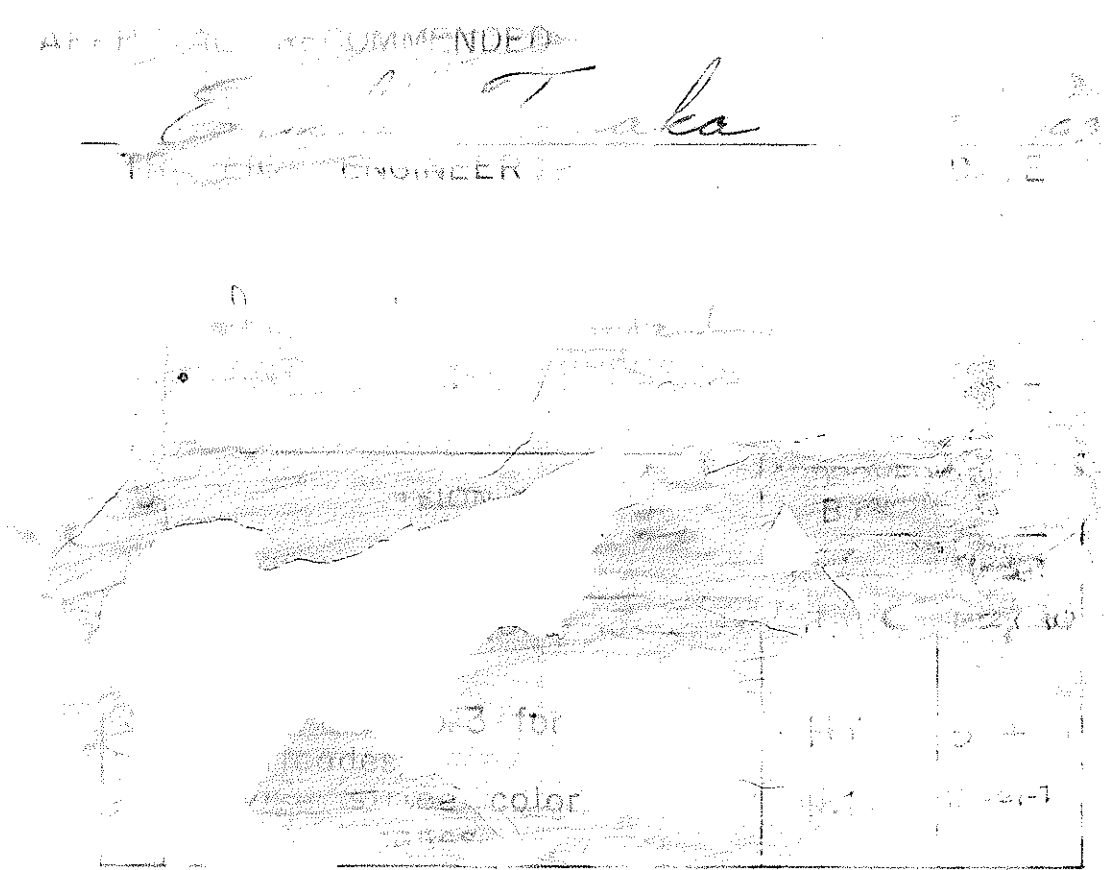
- GENERAL NOTES**
1. The Contractor shall construct, install and maintain the barricades at the locations shown on the Plans.
 2. The permanent barricades shall be left in place or relocated upon completion of the project as ordered by the Engineer and are to become State property.
 3. The orange and white stripes shall slant downward toward the side on which traffic is to pass and shall be reflectorized.
 4. Both faces of the barricade rails shall be striped and the back face of each rail shall have stripes slanting in the opposite direction from the front face.



CLASS I BARRICADE
Scale: 1/2" = 1'-0"



CLASS II BARRICADE
Scale: 1/2" = 1'-0"



STATE OF HAWAII
DEPARTMENT OF TRANSPORTATION
HIGHWAYS DIVISION

TYPICAL DETAILS

BARRICADES

PROJ. NO. BR-F-080-1(7)

SCALE: As Shown DATE: AUG. 1977

SHEET No. 58 OF 165 SHEETS

SURVEY PLOTTED BY	DATE
DRAWN BY	
CHECKED BY	
DESIGNED BY	
NOTE BOOK	
QUANTITIES BY	
CHECKED BY	
ORIGINAL PLAN	
NO.	