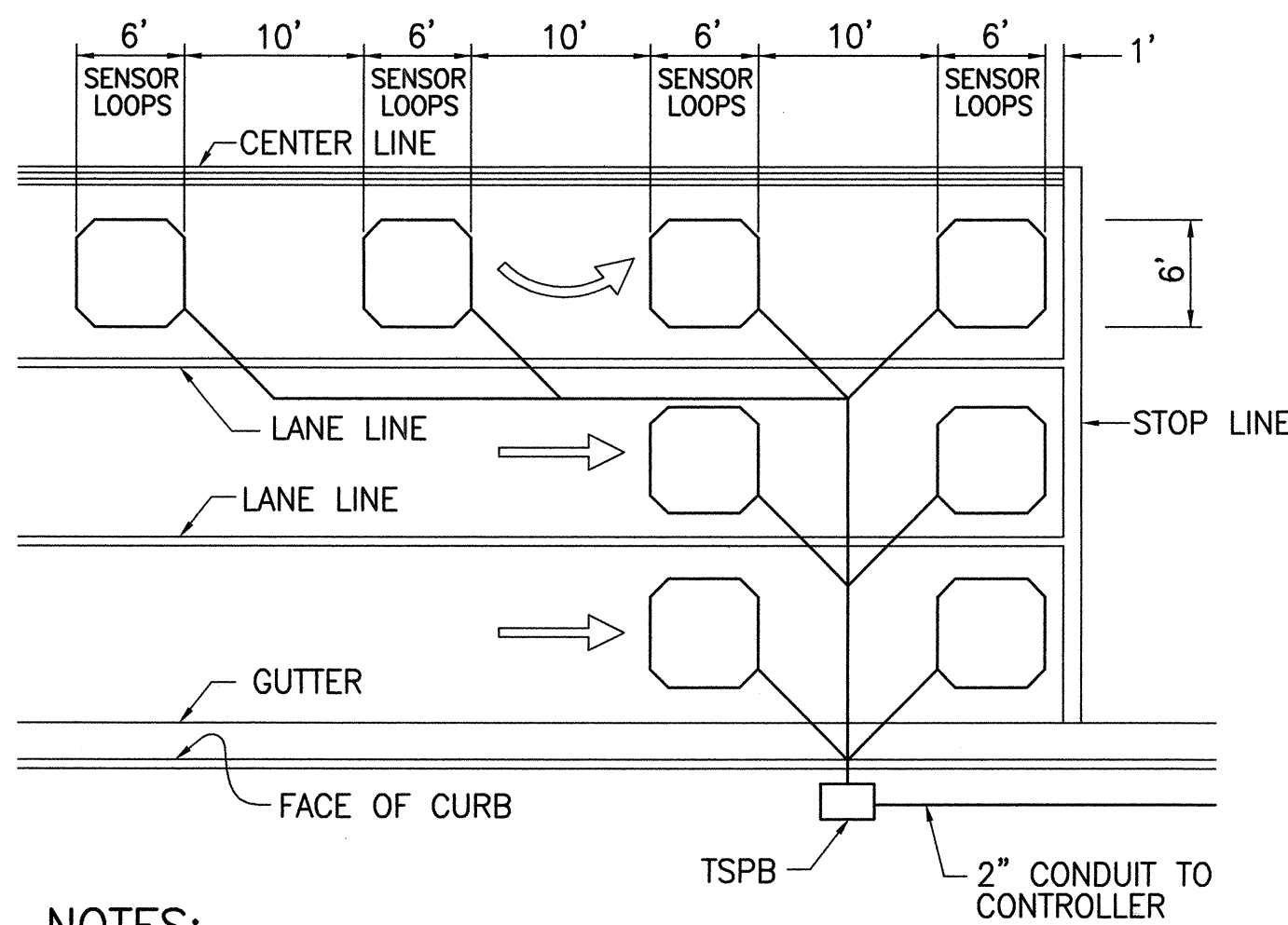


FED. ROAD DIST. NO.	STATE	PROJ. NO.	FISCAL YEAR	SHEET NO.	TOTAL SHEETS
HAWAII	HAW.	78A-01-02M	2002	92	92

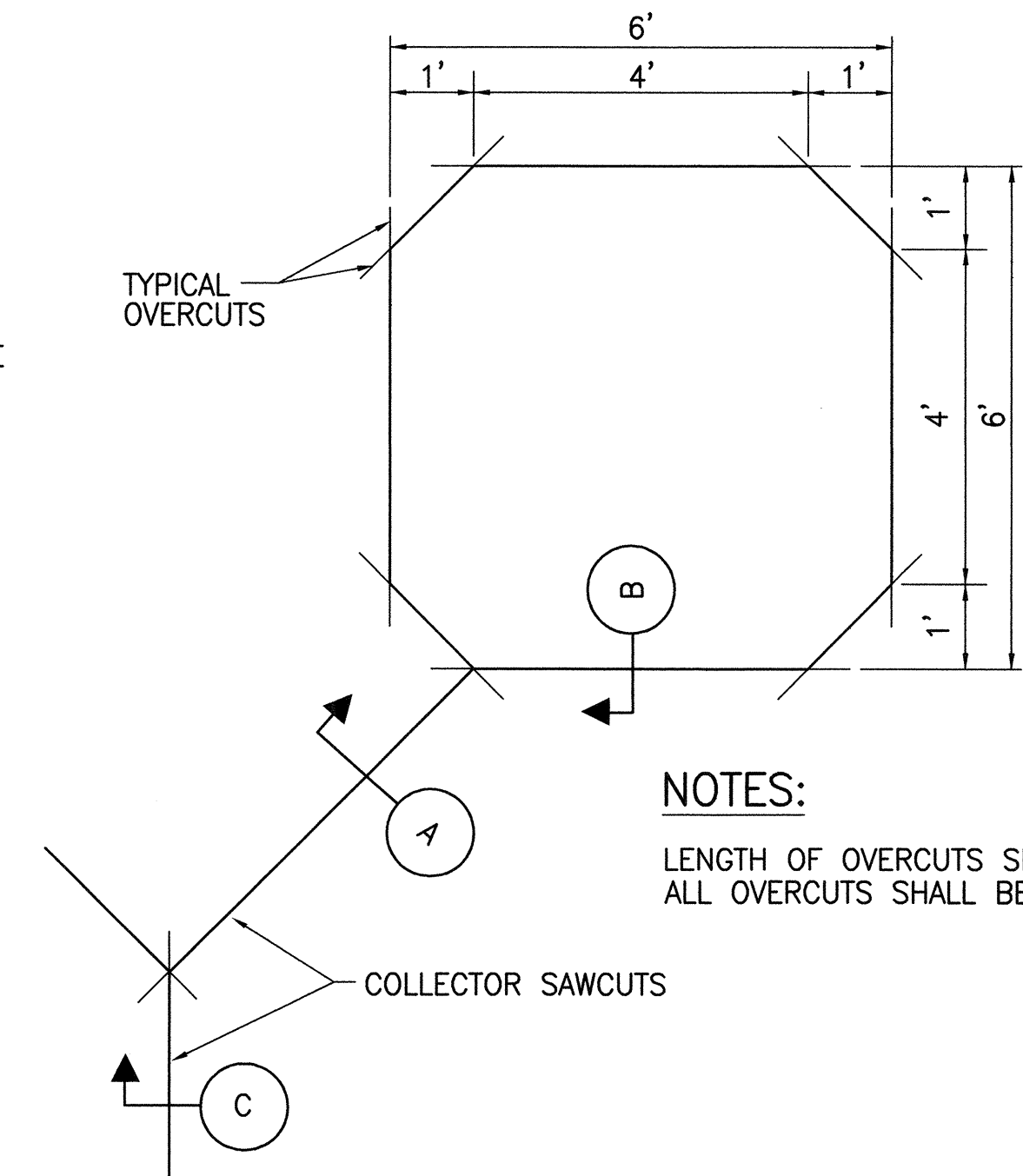


NOTES:

1. CENTER SENSOR LOOPS IN LANES.
2. COLLECTOR CABLES SHALL BE TWISTED 2 TURNS PER FOOT.
3. NUMBER OF LOOPS AND LOCATIONS VARY. SEE PROJECT PLANS.
4. NUMBER AND LOCATIONS OF COLLECTOR SAWCUTS MAY BE VARIED IN THE FIELD TO SUIT.

TYPICAL SENSOR LOOP LAYOUT

NOT TO SCALE

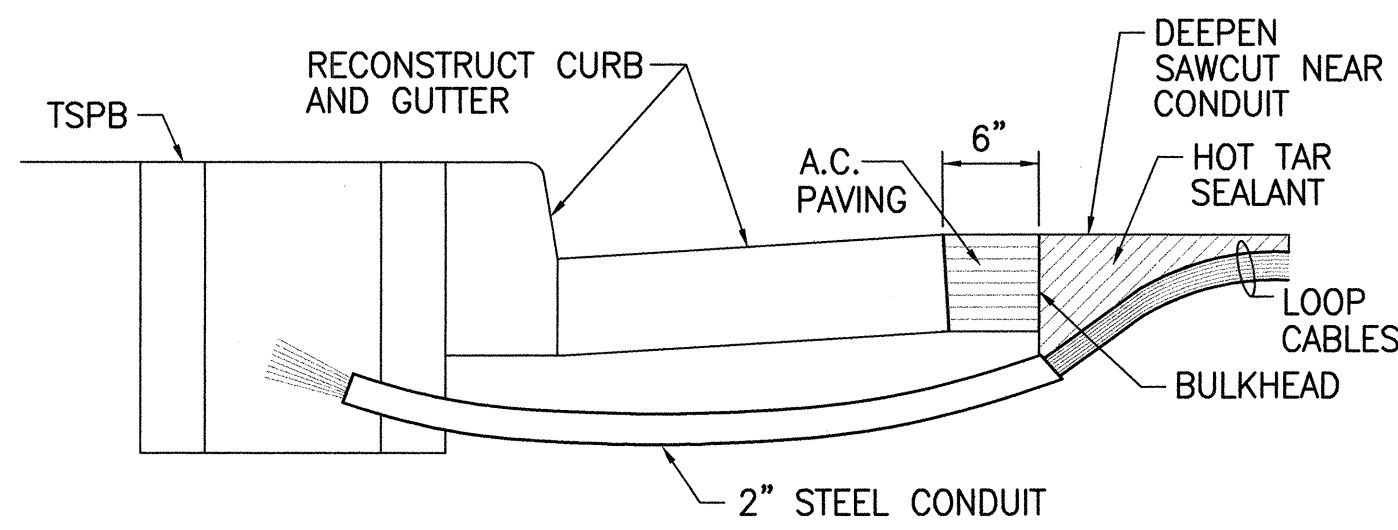
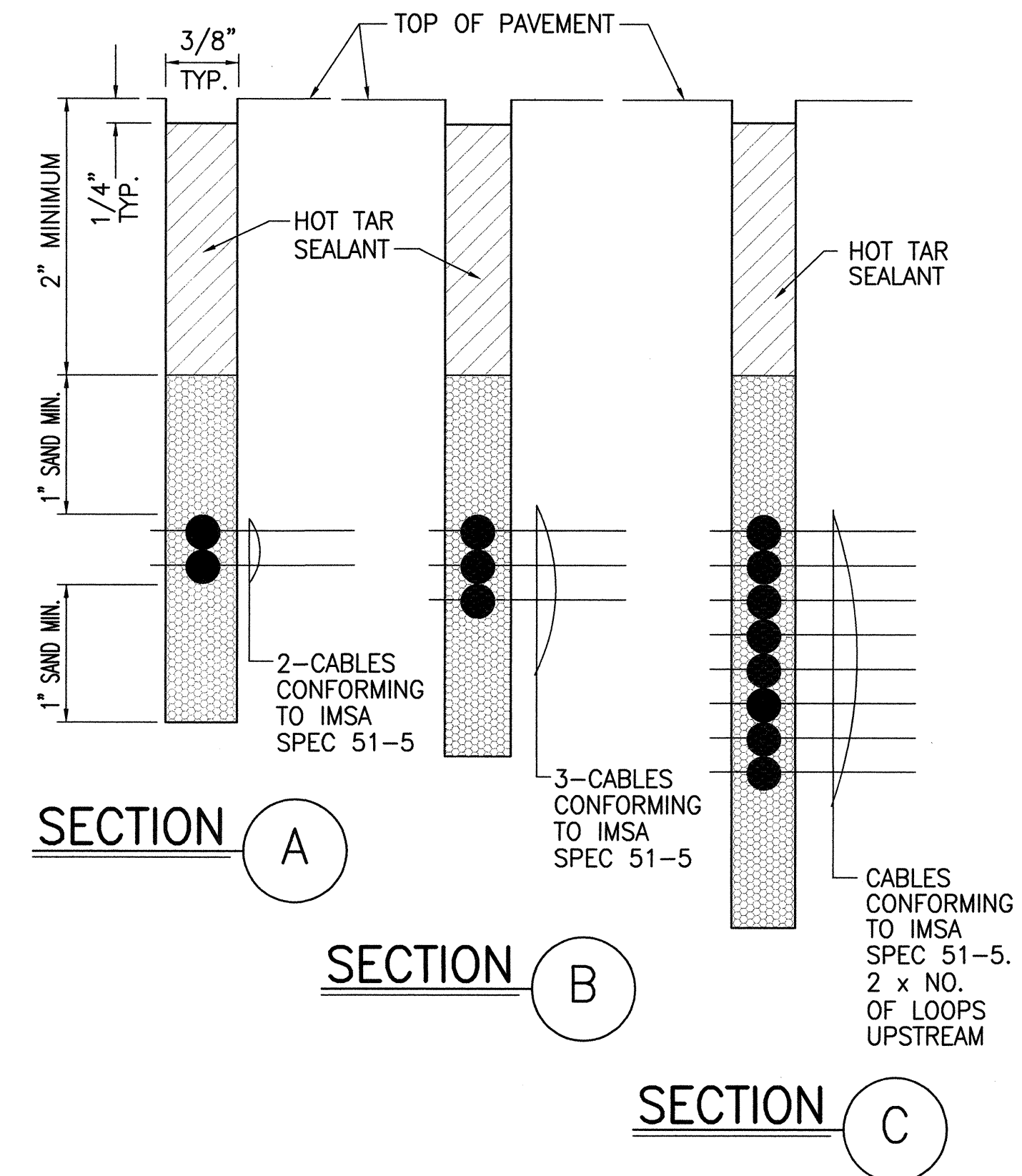


NOTES:

- LENGTH OF OVERCUTS SHALL BE KEPT TO A MINIMUM.
ALL OVERCUTS SHALL BE BACKFILLED WITH HOT TAR.

TYPICAL SENSOR LOOP SAWCUT DETAIL

NOT TO SCALE

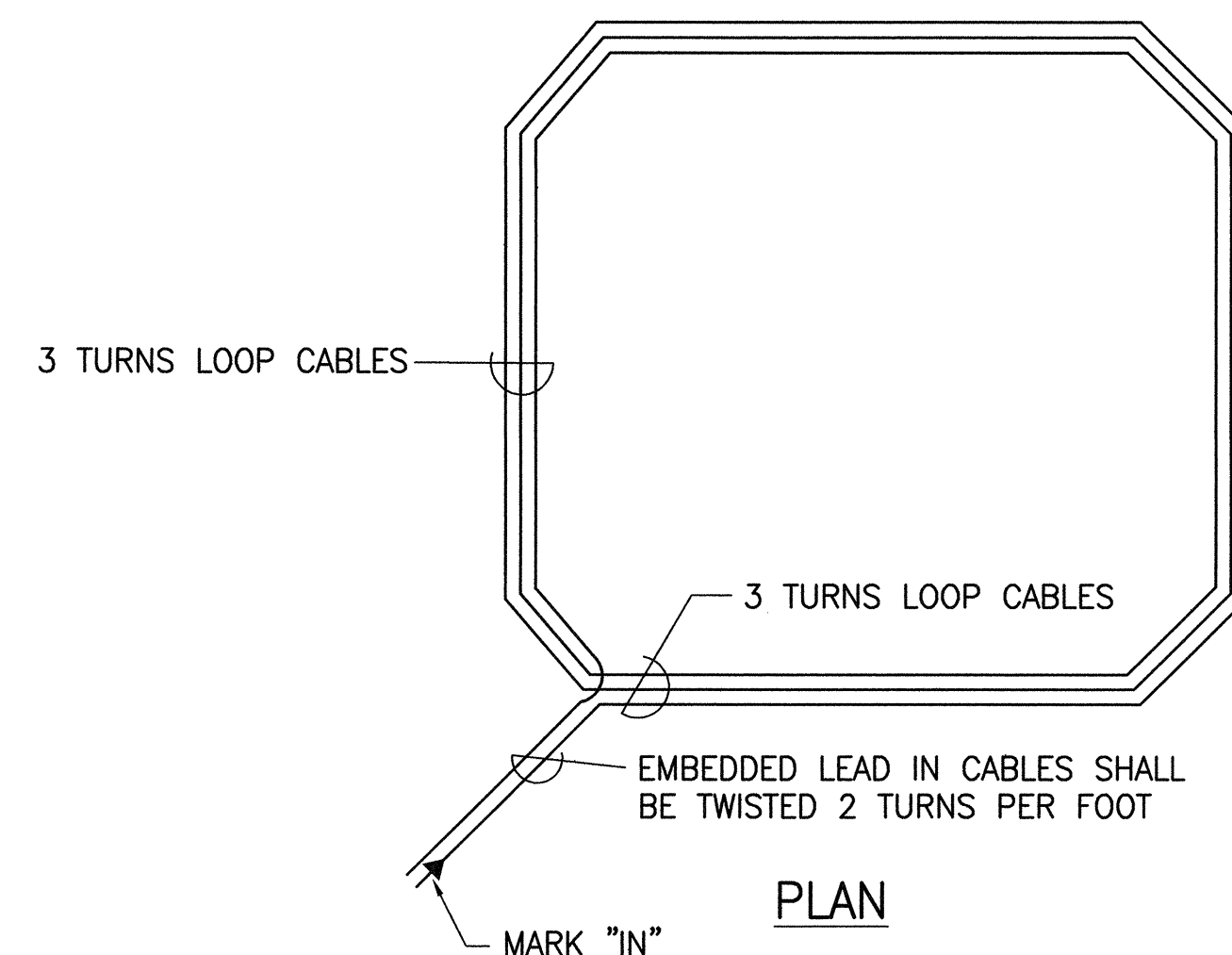


NOTES ON CONSTRUCTION AT END OF SAWCUT

1. SEAL ROADWAY END OF CONDUIT AFTER INSTALLATION OF CONDUCTORS
2. INSTALL BULKHEAD ACROSS CONDUIT TRENCH.
3. PLACE HOT TAR IN SAWCUT.
4. BACKFILL OVER CONDUIT WITH NEW A.C.
5. RECONSTRUCT CURB AND GUTTER AS REQUIRED.

DETAIL OF SENSOR LOOP INSTALLATION AT EDGE OF ROADWAY

NOT TO SCALE



TYPICAL SENSOR LOOP WIRING DIAGRAM

NOT TO SCALE

ORIGINAL PLAN	SURVEY PLOTTED BY	DATE
NOTE BOOK	DRAWN BY	
No.	DESIGNED BY	
	CHECKED BY	

STATE OF HAWAII
DEPARTMENT OF TRANSPORTATION
HIGHWAYS DIVISION
TRAFFIC SIGNAL DETAILS
MOANALUA FREEWAY LIGHTING IMPROVEMENTS
KAMEHAMEHA HIGHWAY TO H1 HALAWA INTERCHANGE
PROJ. NO. 78A-01-02M
Oahu, Hawaii
Scale: As Noted Date: May 2002
SHEET No. 75-3 OF 3 SHEETS