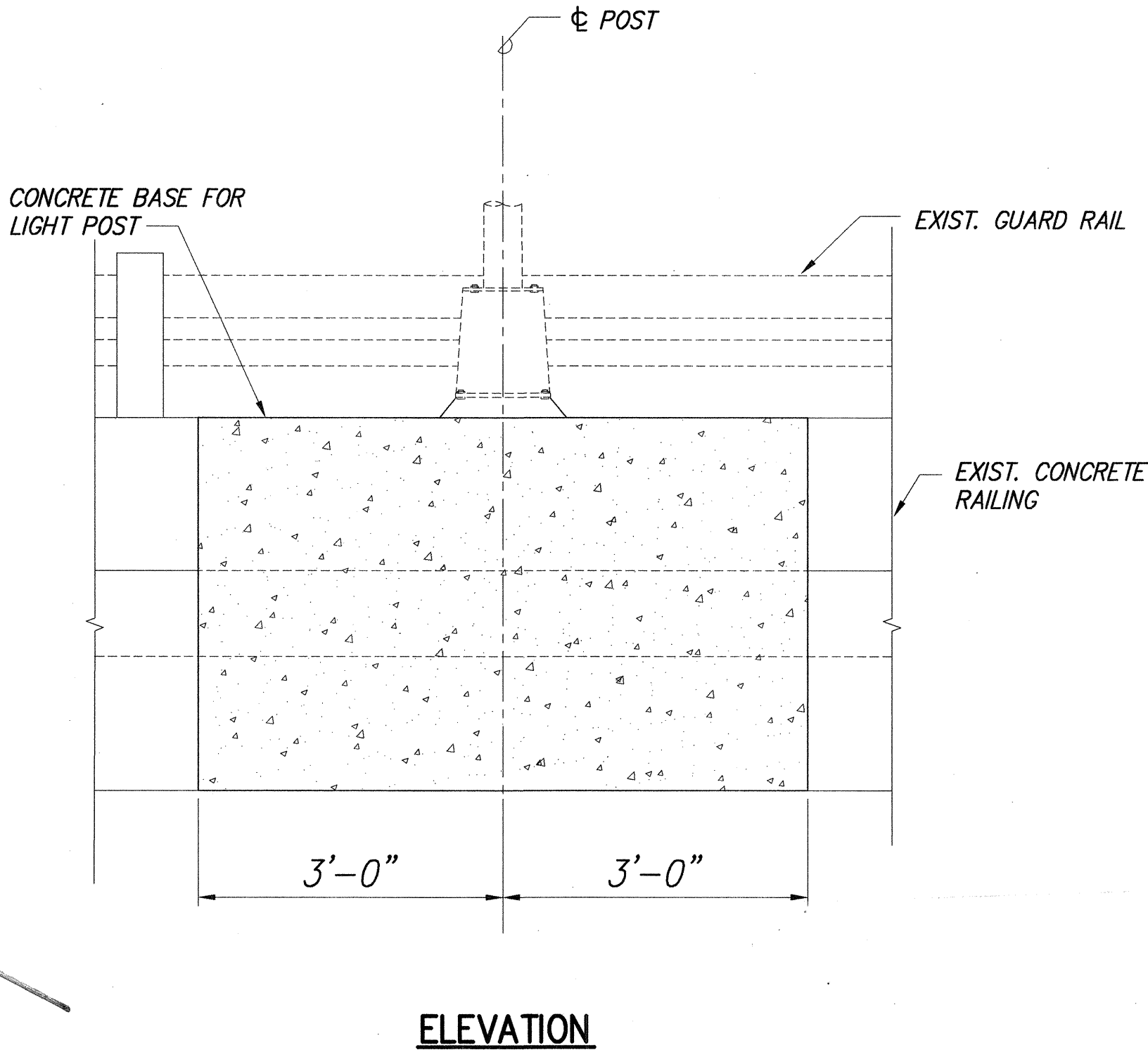
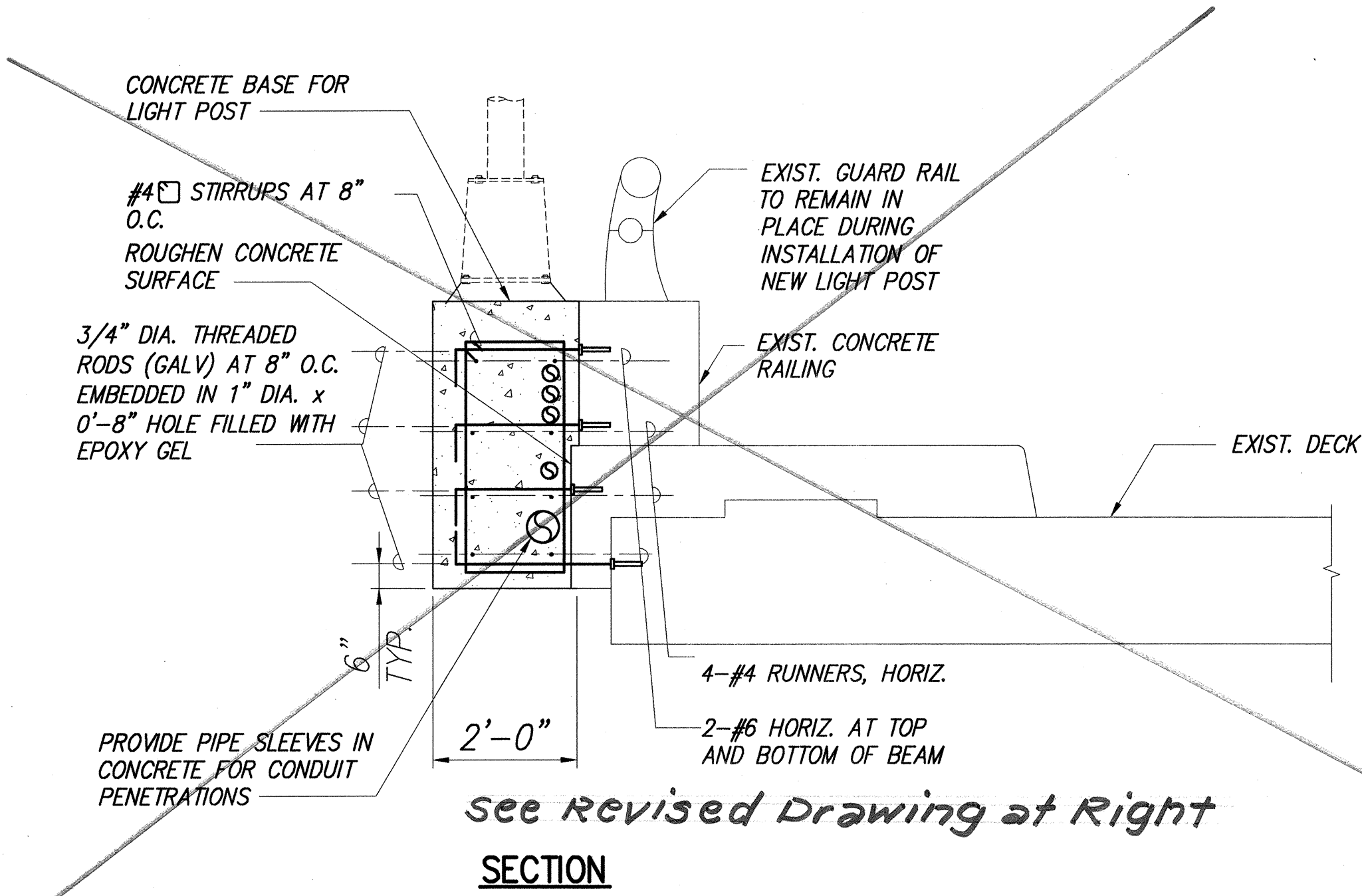
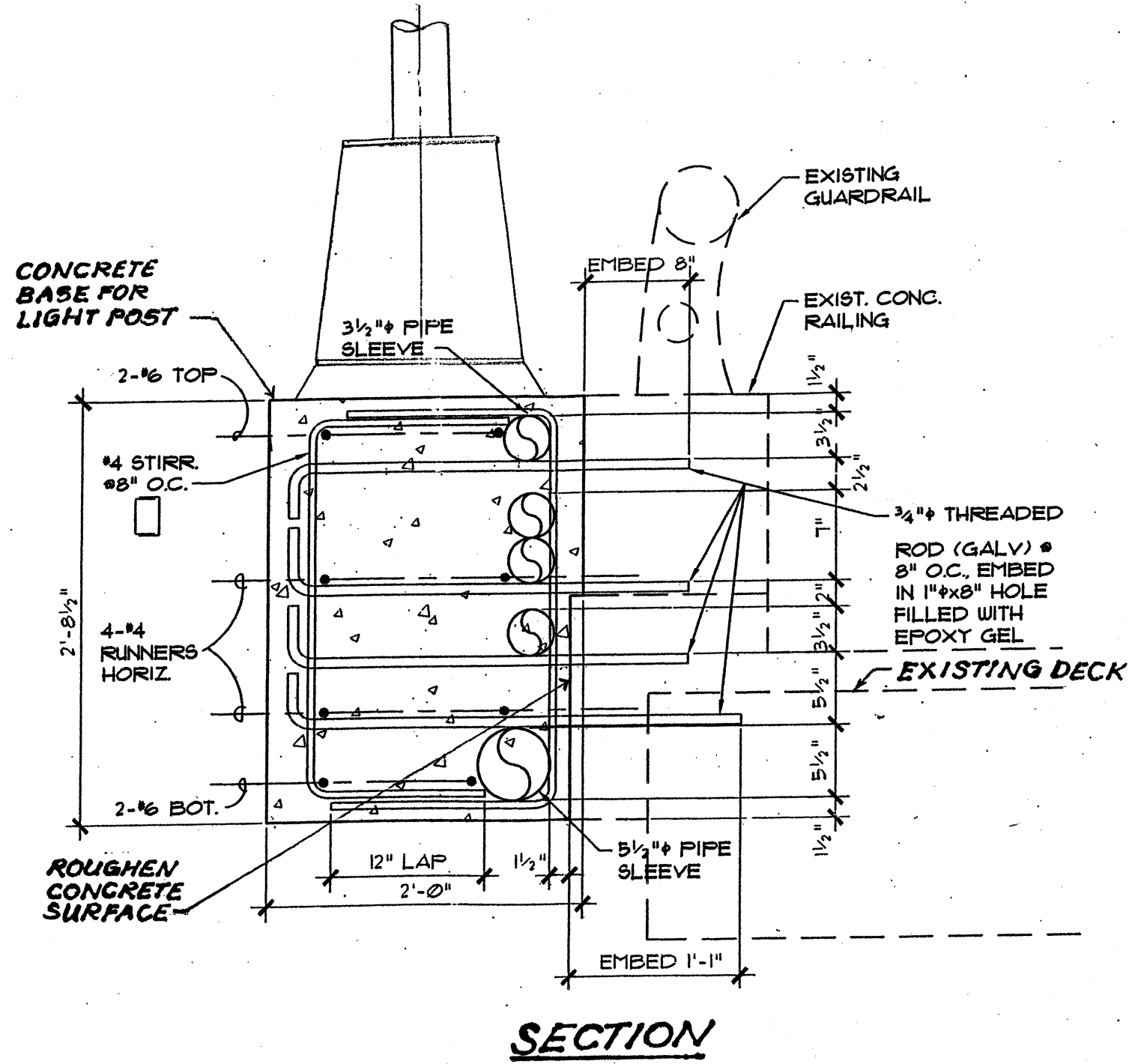
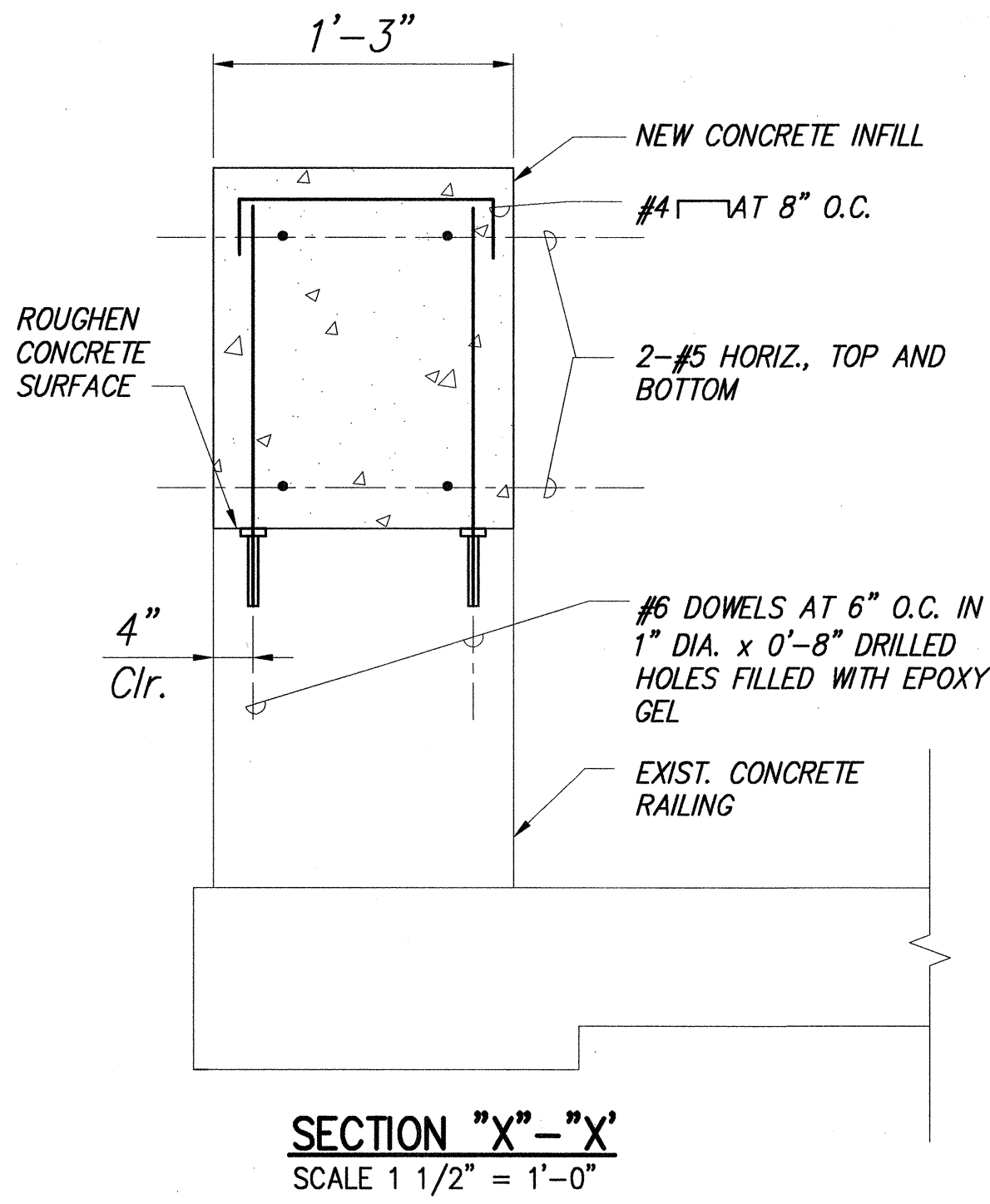
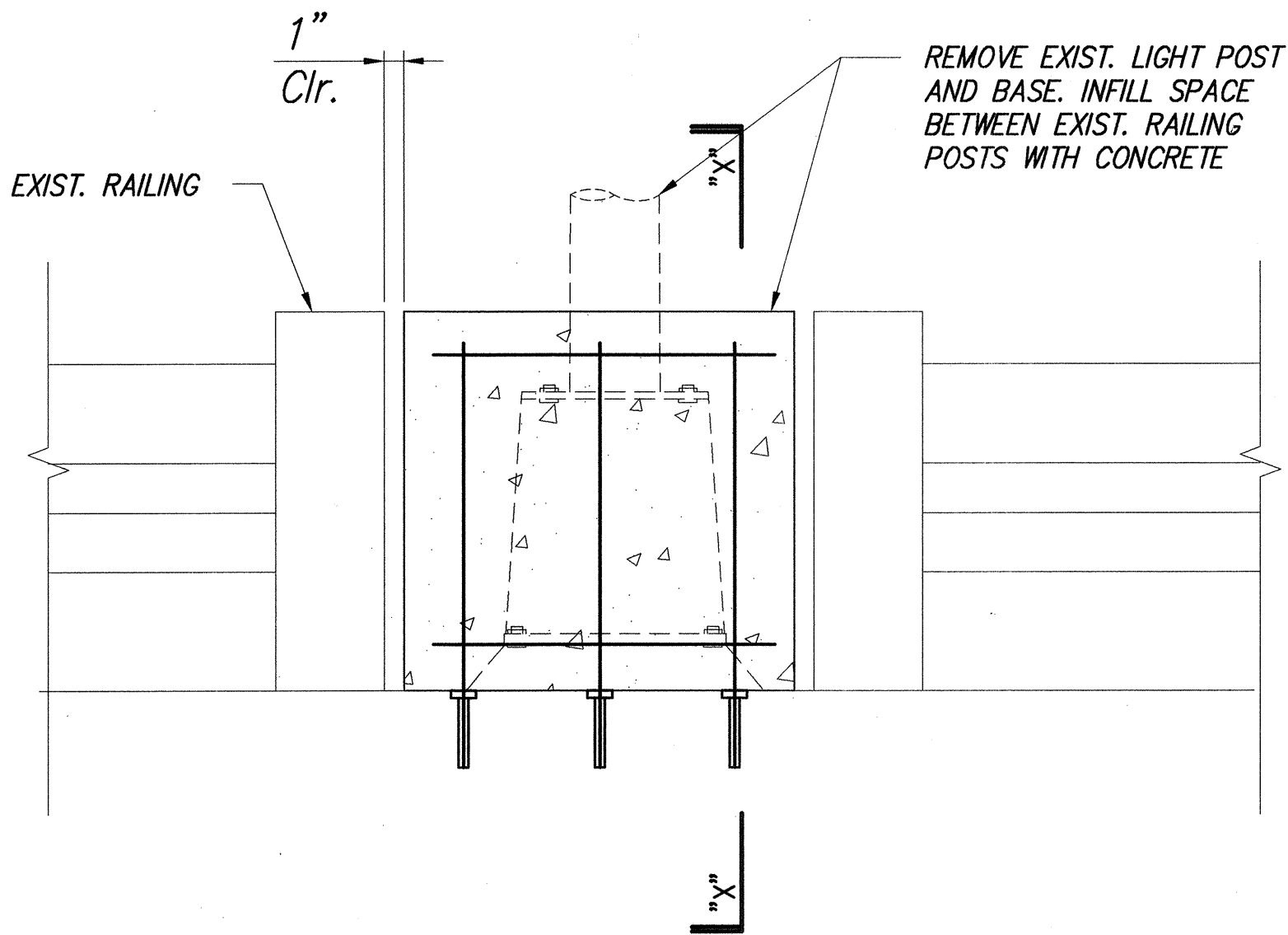


FED. ROAD DIST. NO.	STATE	PROJ. NO.	FISCAL YEAR	SHEET NO.	TOTAL SHEETS
HAWAII	HAW.	78A-01-02M	2002	45	92

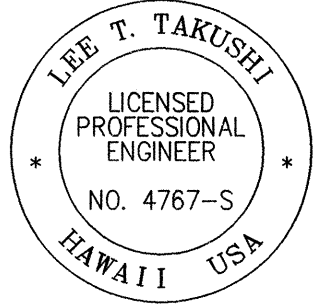


**LIGHT STANDARD FOUNDATION  
INSTALLATION IN EXISTING RAILING**  
SCALE: 3/4" = 1'-0"  
1  
S-4 | S-5



**INFILL OPENING IN EXISTING RAILING**  
SCALE: 1 1/2" = 1'-0"  
2  
S-4 | S-5

**SECTION "X"-X'**  
SCALE 1 1/2" = 1'-0"



THIS WORK WAS PREPARED BY ME  
OR UNDER MY SUPERVISION.

*Lee T. Takushi*

STATE OF HAWAII  
DEPARTMENT OF TRANSPORTATION  
HIGHWAYS DIVISION  
**LIGHTING FDN INSTALLATION**  
**ALONG EXIST. RAILING**  
MOANALUA FREEWAY LIGHTING IMPROVEMENTS  
Kamehameha Hwy to H1 Halawa Interchange  
Project No. 78A-01-02M  
Oahu, Hawaii  
Scale: As Noted Date: May 2002

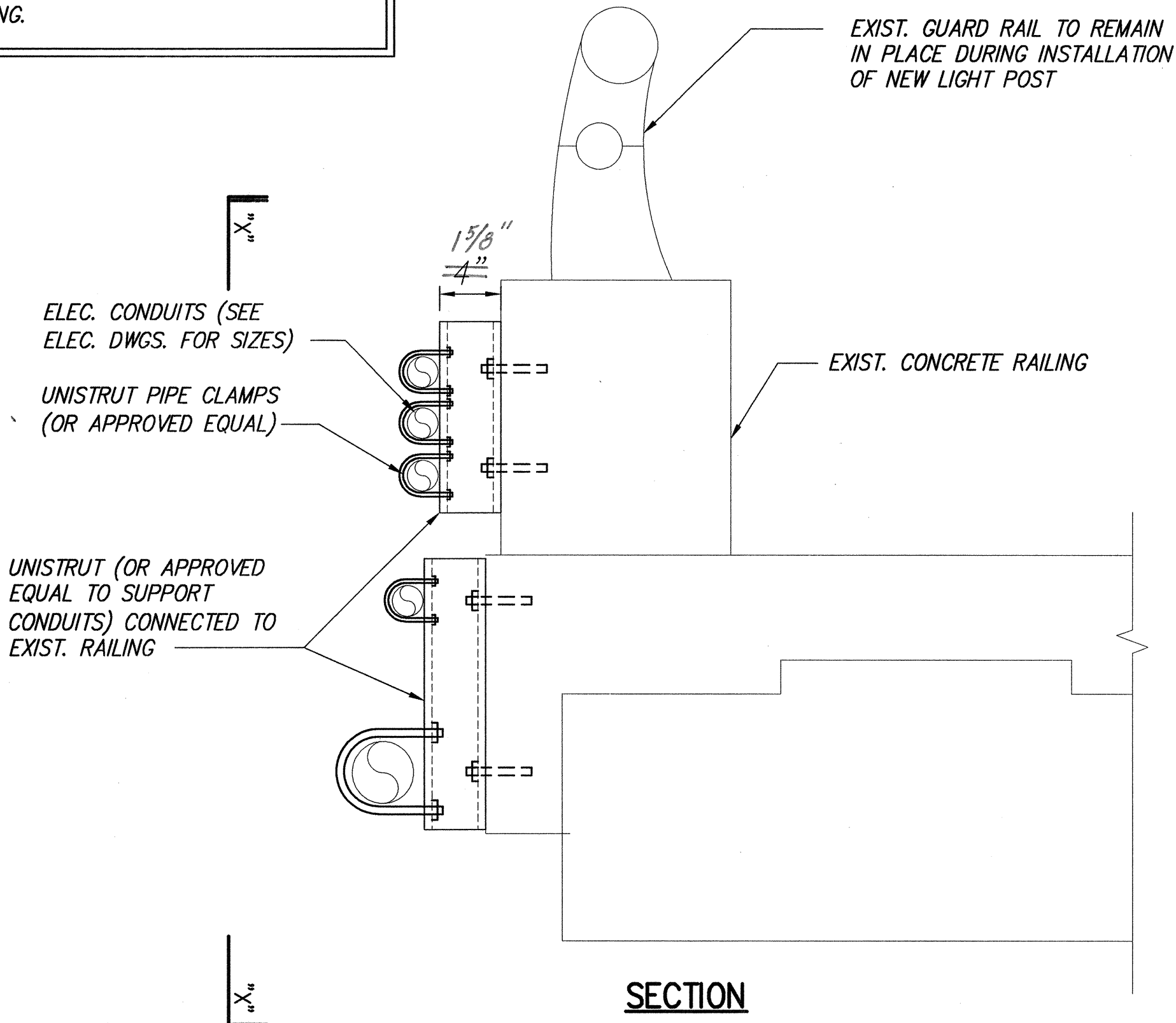
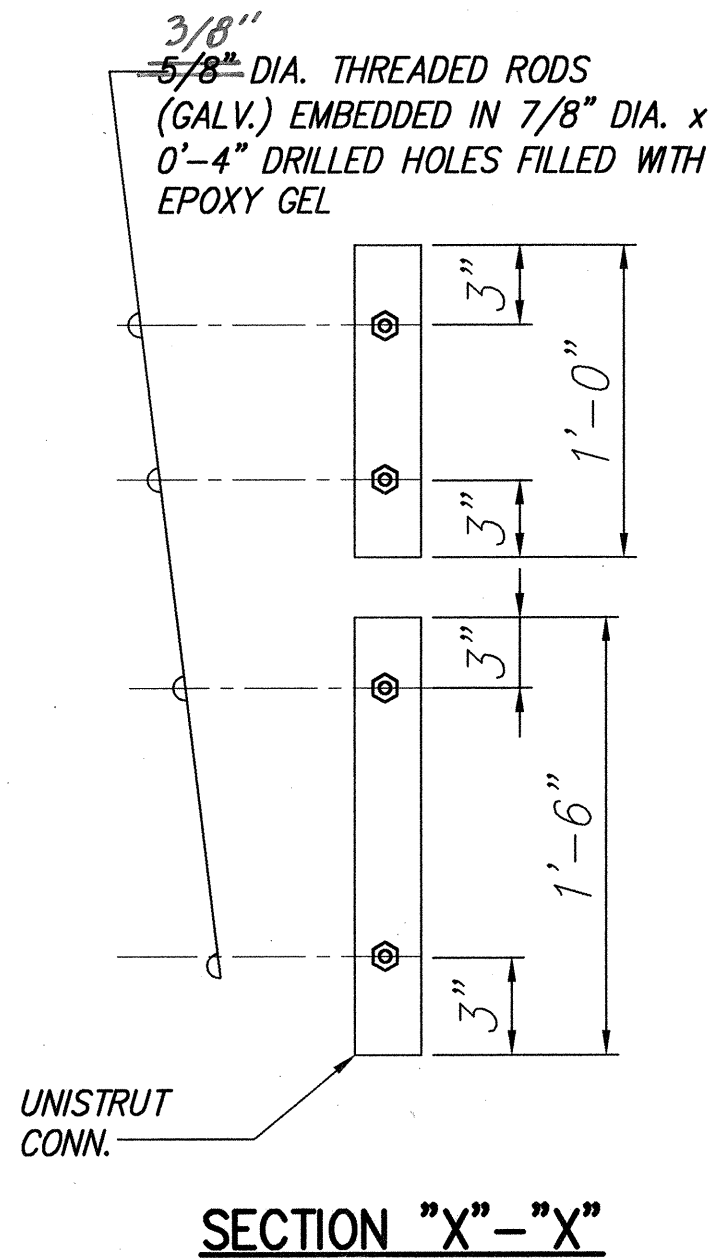
SHEET No. S-5 OF 6 SHEETS

**"AS-BUILT"**

ORIGINAL PLAN	SURVEY PLOTTED BY	DATE
NOTE BOOK	DRAWN BY	
	DESIGNED BY	
	CHECKED BY	

FED. ROAD DIST. NO.	STATE	PROJ. NO.	FISCAL YEAR	SHEET NO.	TOTAL SHEETS
HAWAII	HAW.	78A-01-02M	2002	46	92

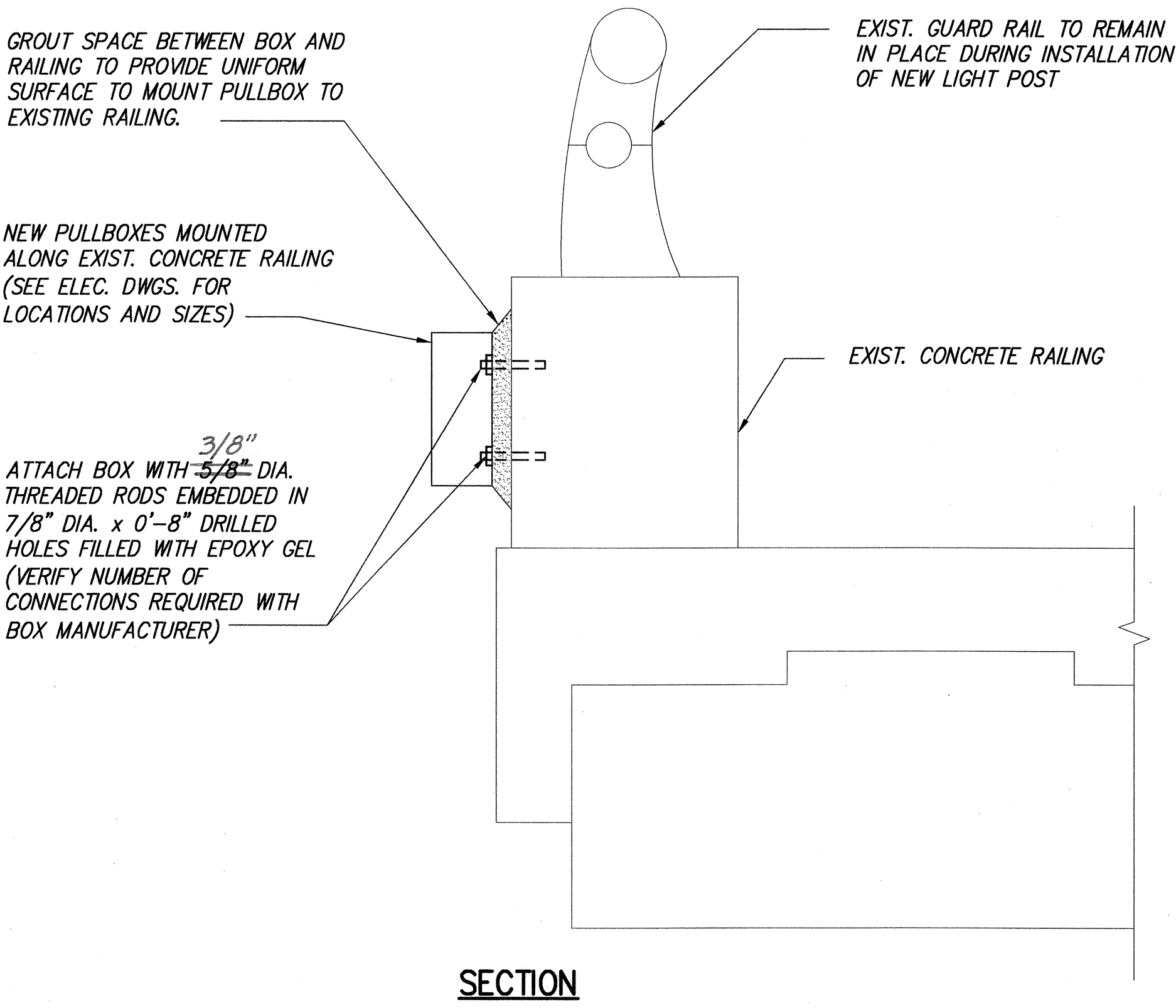
**SPECIAL NOTE:**  
CONDUIT SUPPORTS ARE LOCATED 5'-0" O.C., MIN., TYP. UNLESS NOTED OTHERWISE, ANCHORS AND CONDUIT SUPPORTS SHALL BE STAINLESS STEEL. LOCATE CONDUIT SUPPORTS OUTSIDE OF NEW LIGHTING FOUNDATION INSTALLATION ALONG EXIST. RAILING.



TYPICAL CONDUIT CONNECTION TO EXISTING RAILING

SCALE: 1 1/2" = 1'-0"

1  
S-4 | S-6

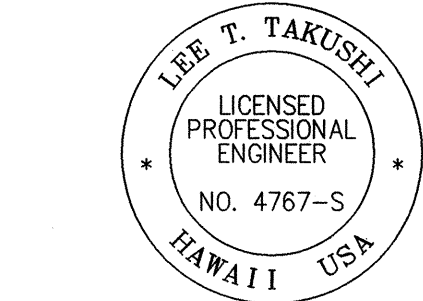


TYPICAL PULLBOX MOUNTING CONNECTION TO EXISTING RAILING

SCALE: 1 1/2" = 1'-0"

2  
S-4 | S-6

ORIGINAL PLAN	SURVEY PLOTTED BY	DATE
NOTE BOOK	DRAWN BY	" "
	DESIGNED BY	" "
	CHECKED BY	" "
No.		



THIS WORK WAS PREPARED BY ME OR UNDER MY SUPERVISION.

*Lee T. Takushi*

STATE OF HAWAII  
DEPARTMENT OF TRANSPORTATION  
HIGHWAYS DIVISION

**SECTIONS AND DETAILS**

MOANALUA FREEWAY LIGHTING IMPROVEMENTS  
Kamehameha Hwy to H1 Halawa Interchange  
Project No. 78A-01-02M  
Oahu, Hawaii  
Scale: As Noted Date: May 2002

SHEET No. S-6 OF 6 SHEETS

"AS-BUILT"