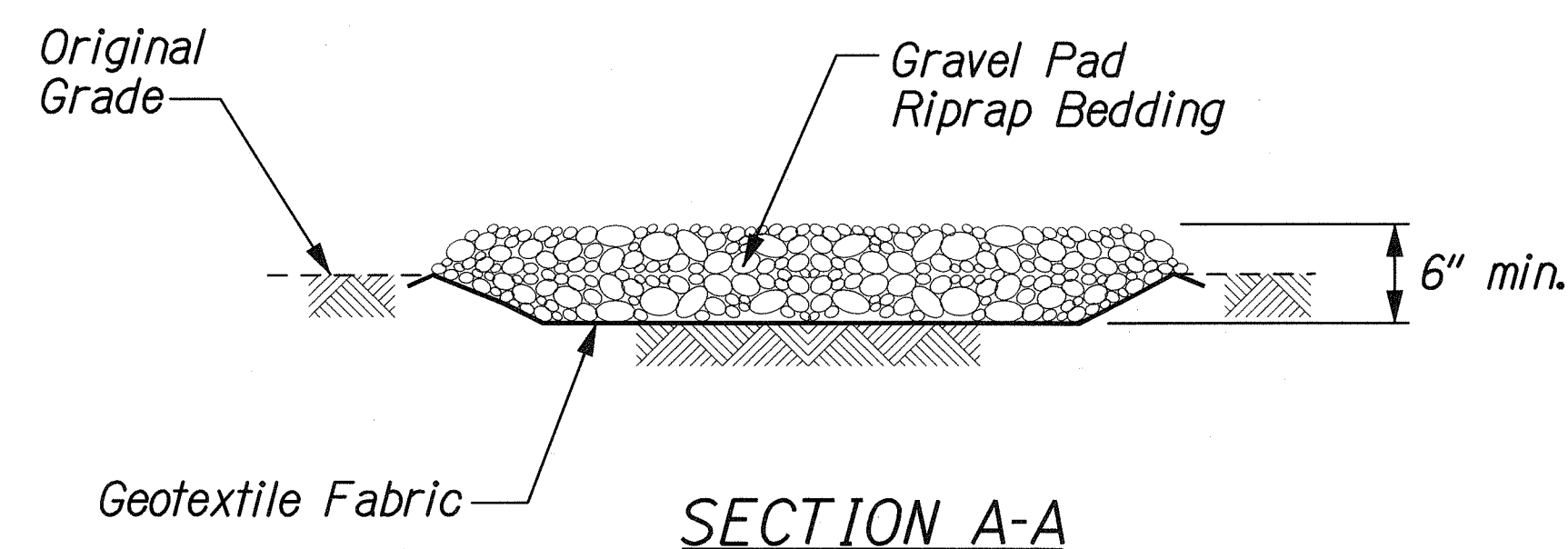
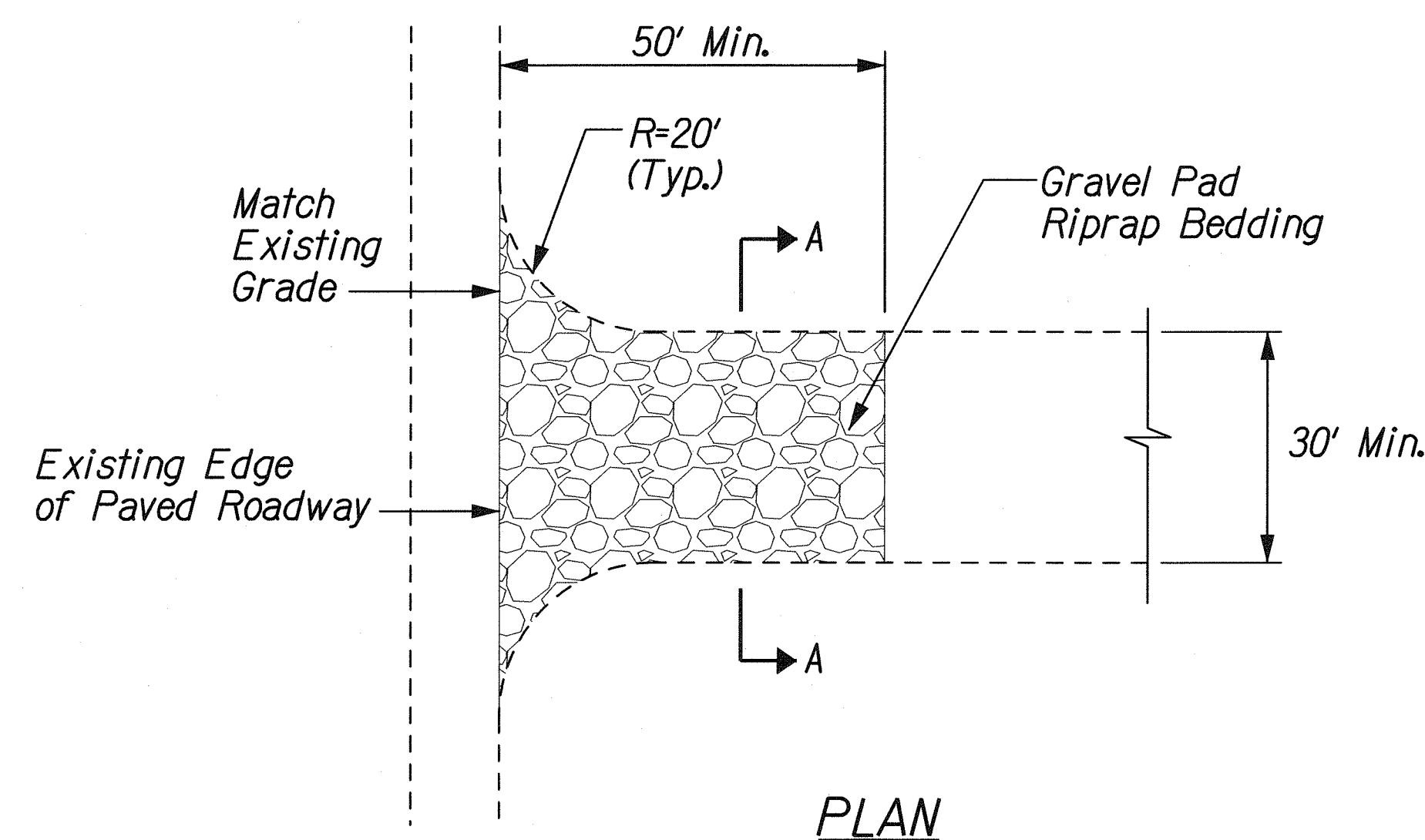
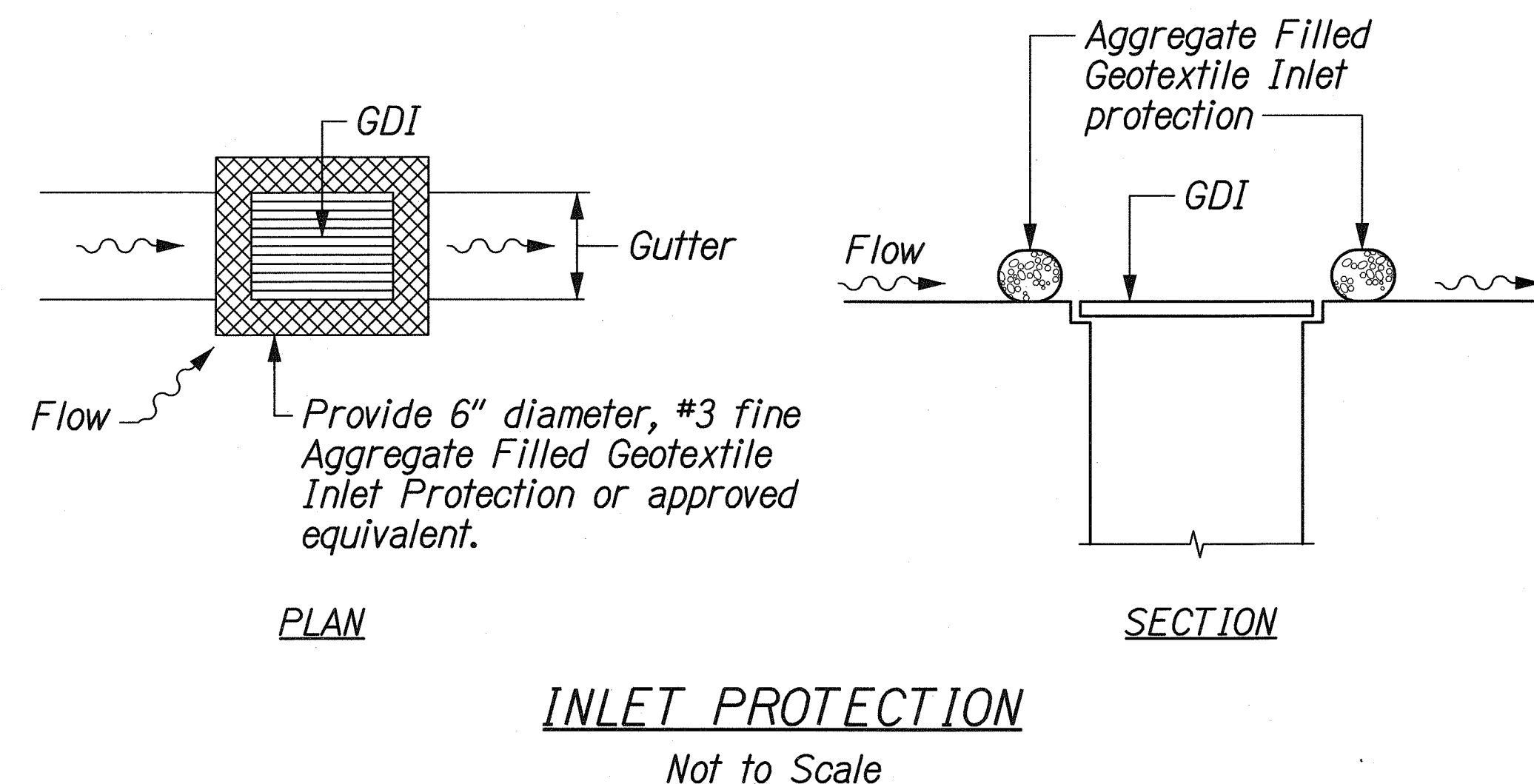
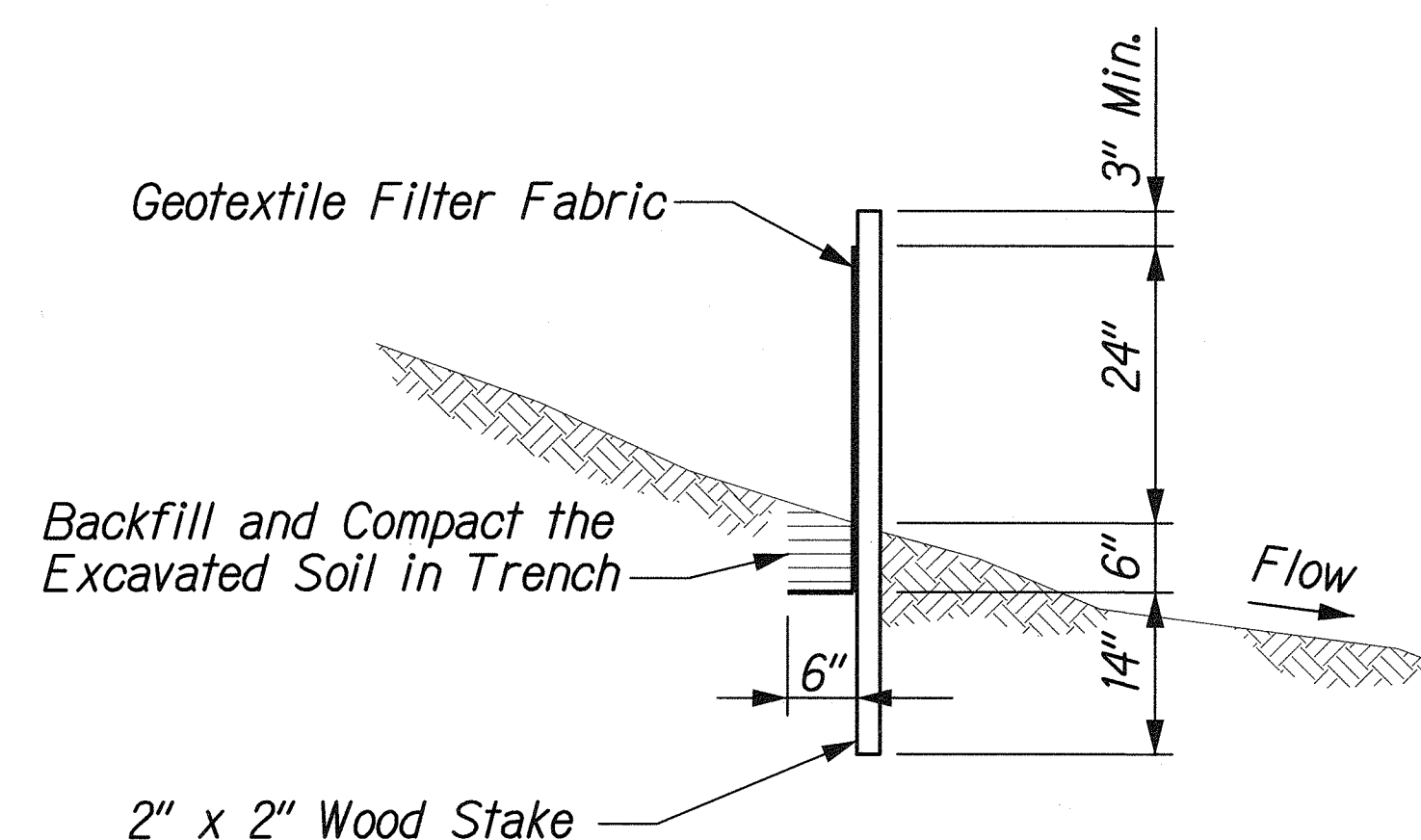
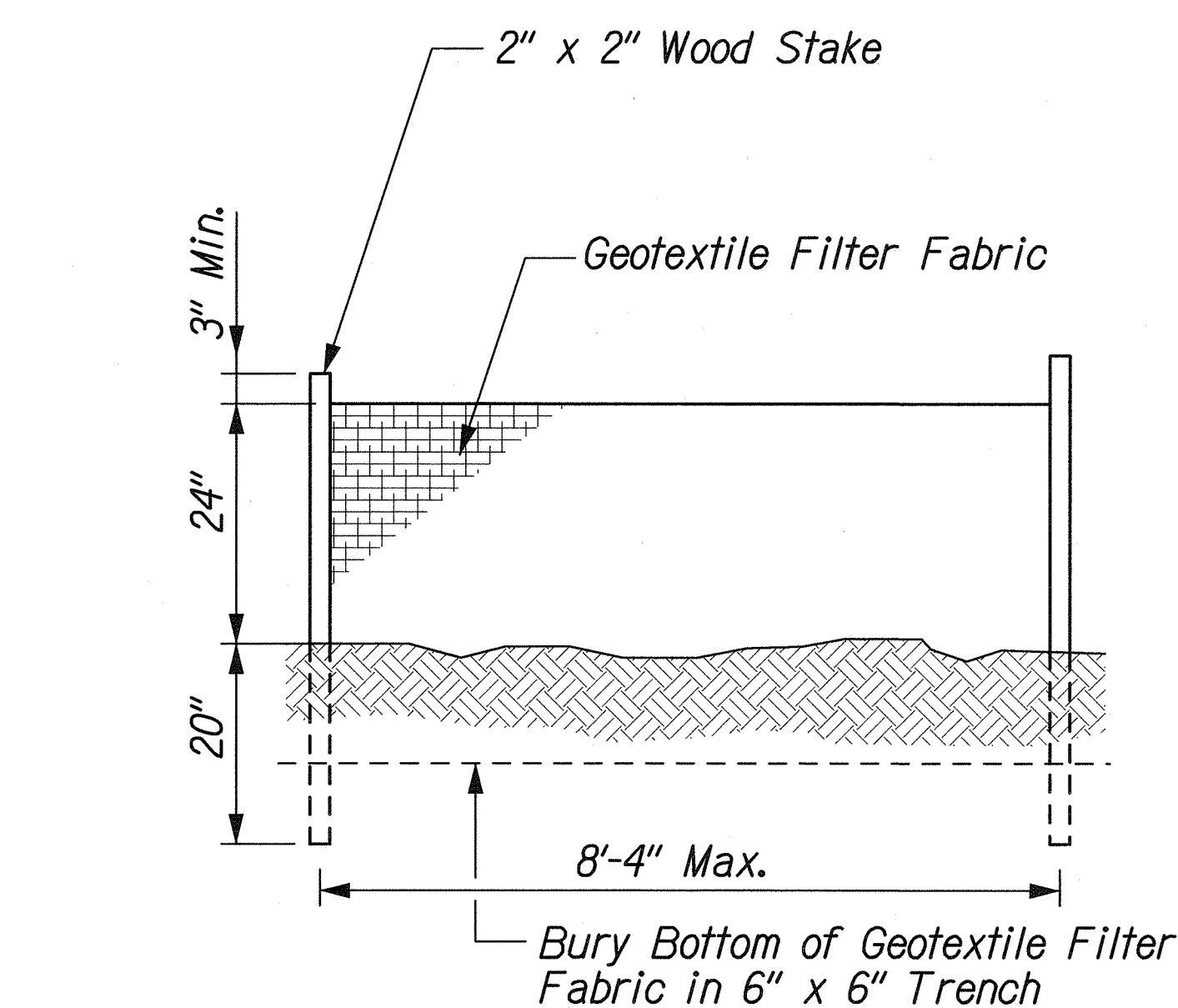


FED. ROAD DIST. NO.	STATE	FEDERAL AID PROJ. NO.	FISCAL YEAR	SHEET NO.	TOTAL SHEETS
HAWAII	HAW.	CMAQ-076-1(9)	2006	46	58

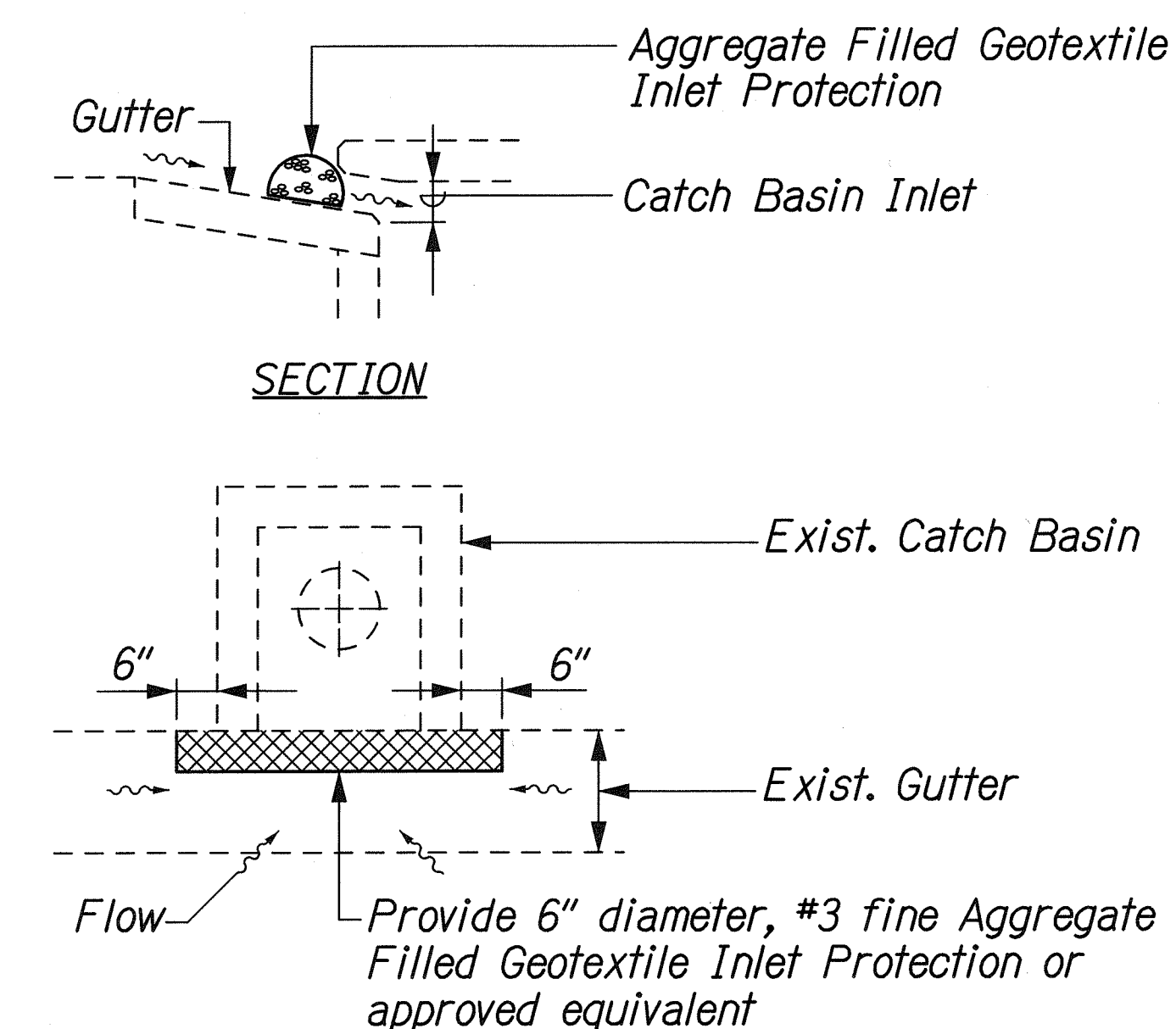


TEMPORARY CONSTRUCTION ENTRANCE STABILIZATION
Not to Scale



SILT FENCE NOTES:

1. The filter fabric shall be a minimum of 36 inches wide.
2. If silt fence is obtained from manufacturer as a package (i.e. fabric attached to post) the manufacturer's installation instructions shall be adhered to.



INLET PROTECTION AT EXISTING CATCH BASIN
Not to Scale

DESIGNED BY	DATE
TRACED BY	
NOTE BOOK	
QUANTITIES BY	
CHECKED BY	

6/FORT WEAVER ROAD/MISC/BMP-DET.dgn

THIS WORK WAS PREPARED BY ME OR UNDER MY SUPERVISION.

R. Urasaki

STATE OF HAWAII
DEPARTMENT OF TRANSPORTATION
HIGHWAYS DIVISION

WATER POLLUTION AND EROSION CONTROL DETAILS

FORT WEAVER ROAD WIDENING
VICINITY OF AAWA DRIVE TO GEIGER ROAD

Scale: None Date: Feb. 29, 2008

SHEET No. EC3-2 OF 4 SHEETS