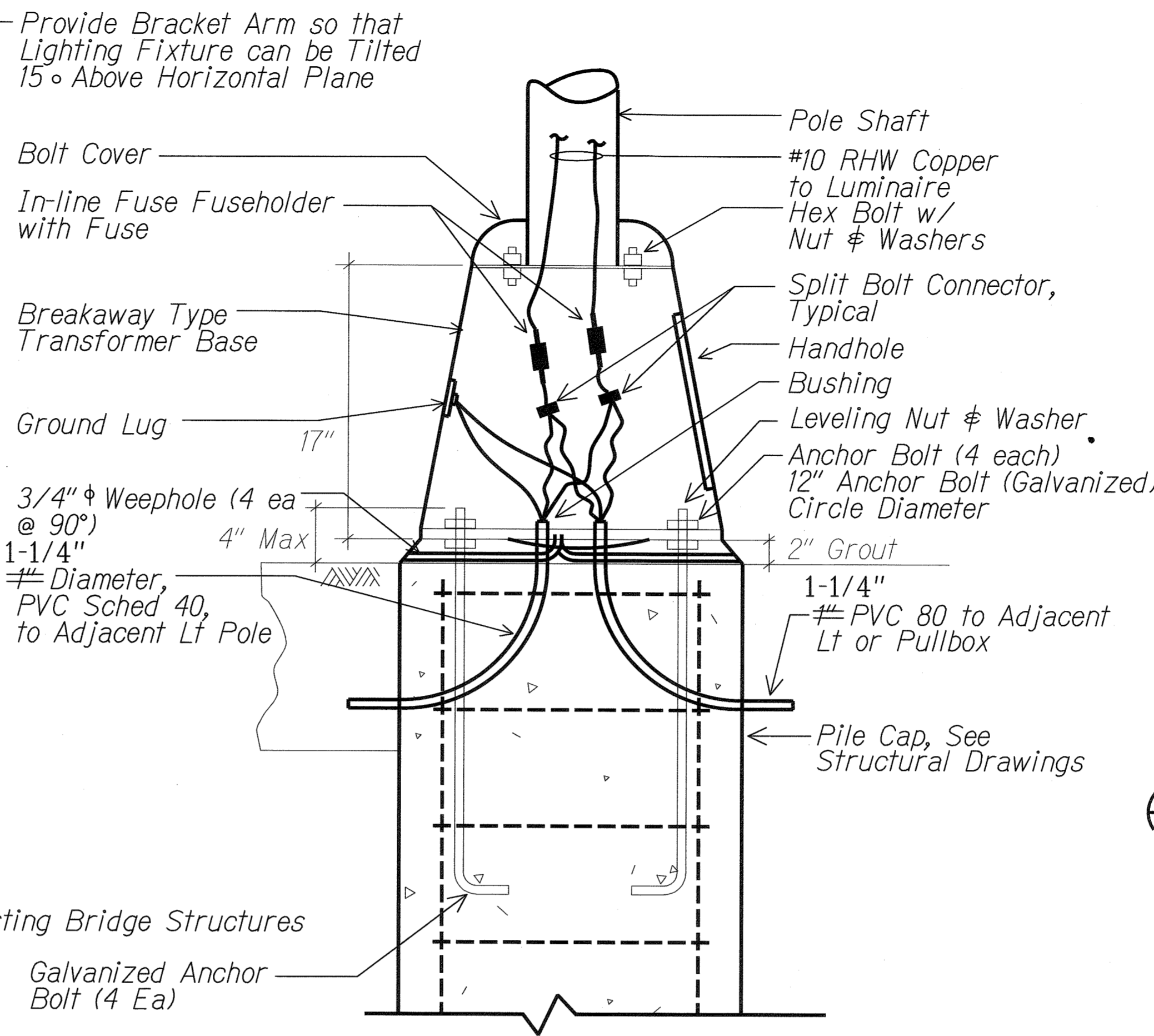
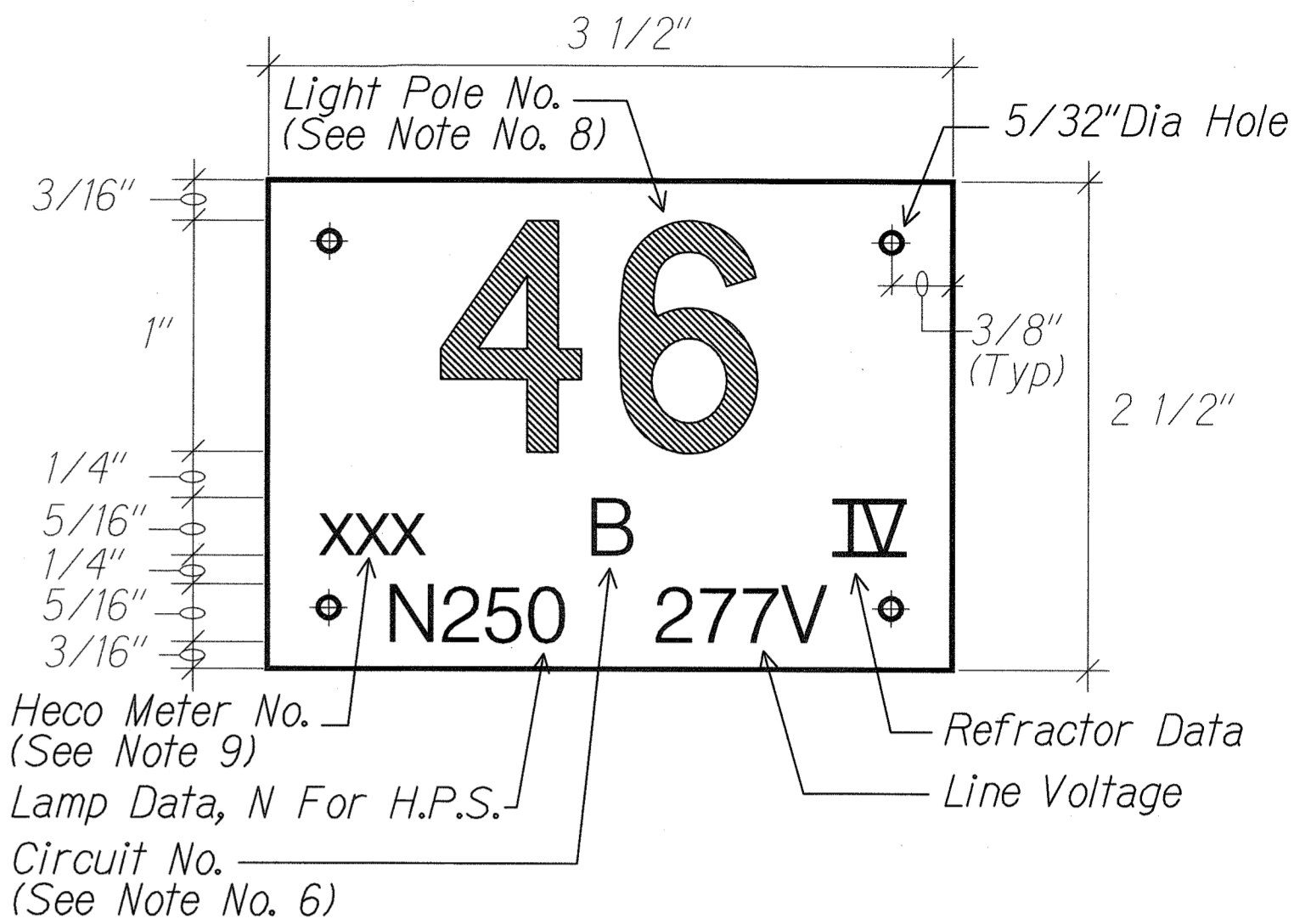


A STREET LIGHT STANDARD DETAIL
E3-1 E3-2 NTS 06030-e2(03102-d1)

MATERIAL LIST		
ITEM	DESCRIPTION	MANUFACTURER
①	Light Pole, 30', Alum	
②	Transformer Base (Alum)	
③	Luminaire, 250W HPS	



B TYPICAL TRANSFORMER BASE WIRING DETAIL
E3-2 E3-2 NTS 06030-e2(03102-d1)



C STREET LIGHT POLE TAG DETAIL
E3-2 E3-2 NTS

- NOTES:**
- Use 3 Ply Laminated Flexible Plastic Black-White-Black Thickness Black Cap Sheet-0.010", White Base Sheet-0.052", Black Base Sheet-0.010".
 - Light Pole Number Size Shall Be 1" High and Engraved 1/8" Wide, White in Color (Number as Required).
 - Nomenclature Size Shall be 5/16" High and Engraved 1/32" Wide, White in Color (Heco Meter Number Panel Board and Circuit Number, Line Voltage, Lamp Data and Refractor Data as Required).
 - Attach to Aluminum and Steel Post with No. 8 Stainless Steel, 1/2" Long Drive Screws in 1/8" Drill Hole. Attach to Wood Poles with 4D Aluminum Nail.
 - Numbers are Inscribed by Cutting Through "Black Cap Sheet" to Expose "White Letters."
 - Nomenclature Required for Systems with Two or More Circuits (Letter Indicates Panel Board, Number Indicates Circuit).
 - For Light Poles Installed on Ramp, Assign Numbers to Include Ramp I.D. and Light Number. Legend May Be Less Than One (1) Inch in Height.
 - Light Numbers Shall be Obtained From the State. Use An Alphabet Suffix to Designate Lights Mounted on the Same Pole (e.g. 123A & 123B).
 - For Non-Metered System, Call Out the Contract Number.

SURVEY PLOTTED BY	DATE
DRAWN BY	
DESIGNED BY	
QUANTITIES BY	
CHECKED BY	
ORIGINAL PLAN	
NOTE BOOK	
No.	

LEGEND FOR AS-BUILT POSTINGS	
	Squiggly line for as-built deletion
	Double line for as-built deletion
Roadway	Text for as-built posting

STATE OF HAWAII
DEPARTMENT OF TRANSPORTATION
HIGHWAYS DIVISION
STREET LIGHT STANDARD DETAILS
FORT WEAVER ROAD WIDENING
VICINITY OF AAWA DRIVE TO GEIGER ROAD
Scale: Not to Scale Date: May 2006
SHEET No. E3-2 OF 3 SHEETS