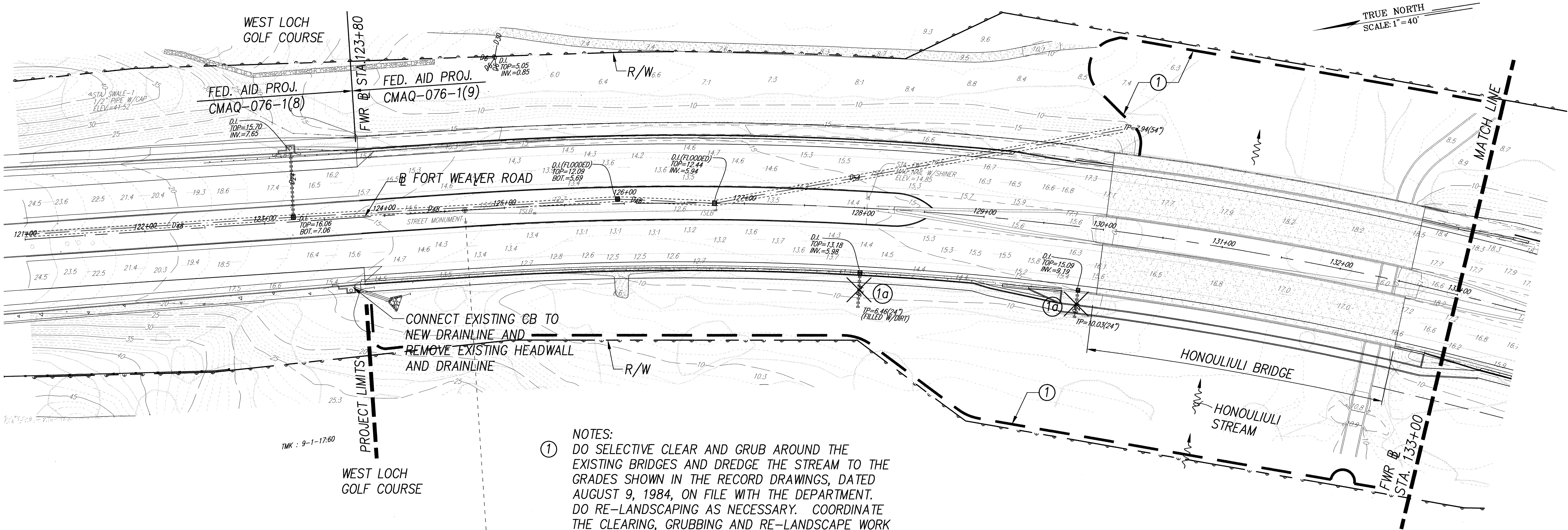


FED. ROAD DIST. NO.	STATE	FED. AID PROJ. NO.	FISCAL YEAR	SHEET NO.	TOTAL SHEETS
HAWAII	HAW.	CMAQ-076-1(9)	2005	27	64



- NOTES:
- ① DO SELECTIVE CLEAR AND GRUB AROUND THE EXISTING BRIDGES AND DREDGE THE STREAM TO THE GRADES SHOWN IN THE RECORD DRAWINGS, DATED AUGUST 9, 1984, ON FILE WITH THE DEPARTMENT. DO RE-LANDSCAPING AS NECESSARY. COORDINATE THE CLEARING, GRUBBING AND RE-LANDSCAPE WORK WITH THE CITY DEPARTMENT OF PARKS AND RECREATION AND OBTAIN ALL THE NECESSARY PERMITS FOR THIS WORK.
 - ①a OUTLET PIPE SERVING A SINGLE INLET OR CATCH BASIN IS NOT DESIRABLE AND MUST BE APPROVED BY THE STATE ON A CASE BY CASE BASIS.

ORIGINAL PLAN	SURVEY PLOTTED BY	DATE
NOTE BOOK	DRAWN BY	
	TRACED BY	
	QUANTITIES BY	
	CHECKED BY	
No.		

STATE OF HAWAII
DEPARTMENT OF TRANSPORTATION
HIGHWAYS DIVISION

DRAINAGE PLAN
BASELINE STA.123+80 TO STA.133+00
FORT WEAVER ROAD WIDENING
VICINITY OF AAWA DRIVE TO GEIGER ROAD
FEDERAL AID PROJECT NO. CMAQ-076-1(9)
SCALE: 1"=40' DATE: April 1, 2005
SHEET No. 1 OF 12 SHEETS

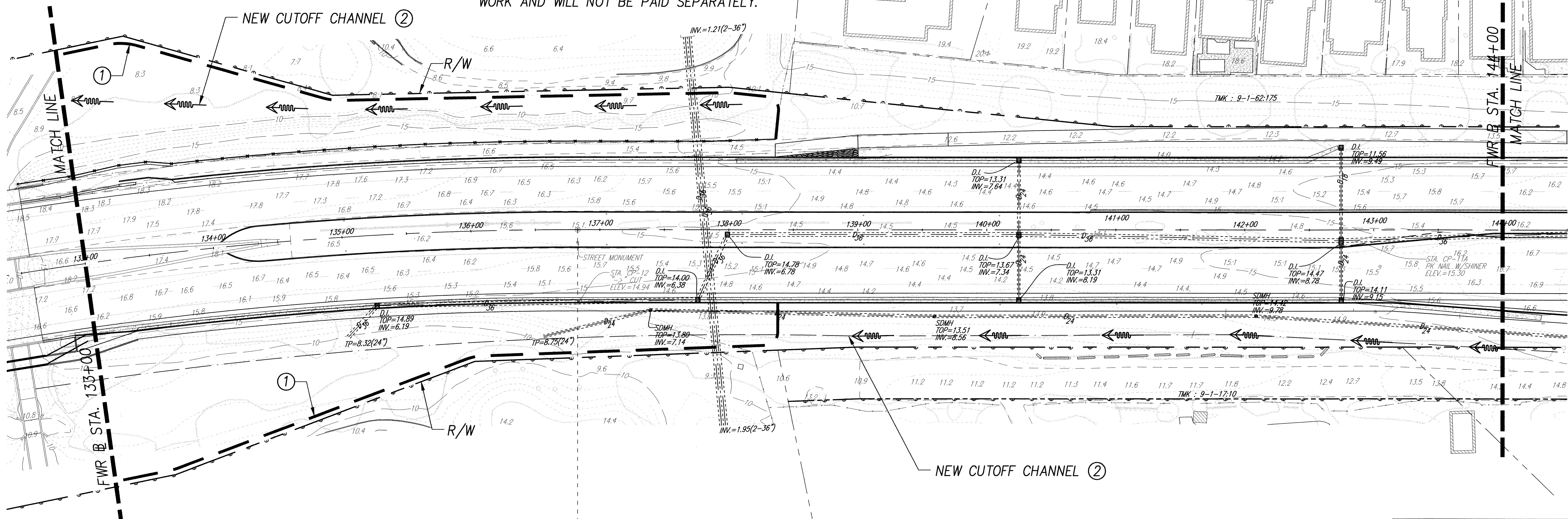
FED. ROAD DIST. NO.	STATE	FED. AID PROJ. NO.	FISCAL YEAR	SHEET NO.	TOTAL SHEETS
HAWAII	HAW.	CMAQ-076-1(9)	2005	28	64

NOTES:
① DO SELECTIVE CLEAR AND GRUB AROUND THE EXISTING BRIDGES AND DREDGE THE STREAM TO THE GRADES SHOWN IN THE RECORD DRAWINGS, DATED AUGUST 9, 1984, ON FILE WITH THE DEPARTMENT. DO RE-LANDSCAPING AS NECESSARY. COORDINATE THE CLEARING, GRUBBING AND RE-LANDSCAPE WORK WITH THE CITY DEPARTMENT OF PARKS AND RECREATION AND OBTAIN ALL THE NECESSARY PERMITS FOR THIS WORK.

② THE LOCATION OF THE CHANNEL OUTLET SHALL BE DETERMINED BY THE STREAM HYDRAULICS, COORDINATION WITH THE CITY DEPARTMENT OF PARKS AND RECREATION, THE REQUIREMENTS OF THE PERMITS, AND THE LOCATION OF EXISTING AND NEW BRIDGES.

IF IT IS NOT FEASIBLE OR PERMITTED TO OUTLET THE CHANNEL ON THE WEST SIDE, THE CONTRACTOR SHALL INSTALL A CULVERT ACROSS THE HIGHWAY AND CONTINUE THE CHANNEL ON THE EAST SIDE (WITHIN THE EXISTING RIGHT-OF-WAY) TO THE HONOULIULI STREAM. THE COST OF ANY IMPROVEMENTS TO THE GOLF COURSE SUCH AS CART BRIDGES, ETC. TO ACCOMMODATE THE CHANNEL SHALL BE INCLUDED IN THE CHANNEL WORK AND WILL NOT BE PAID SEPARATELY.

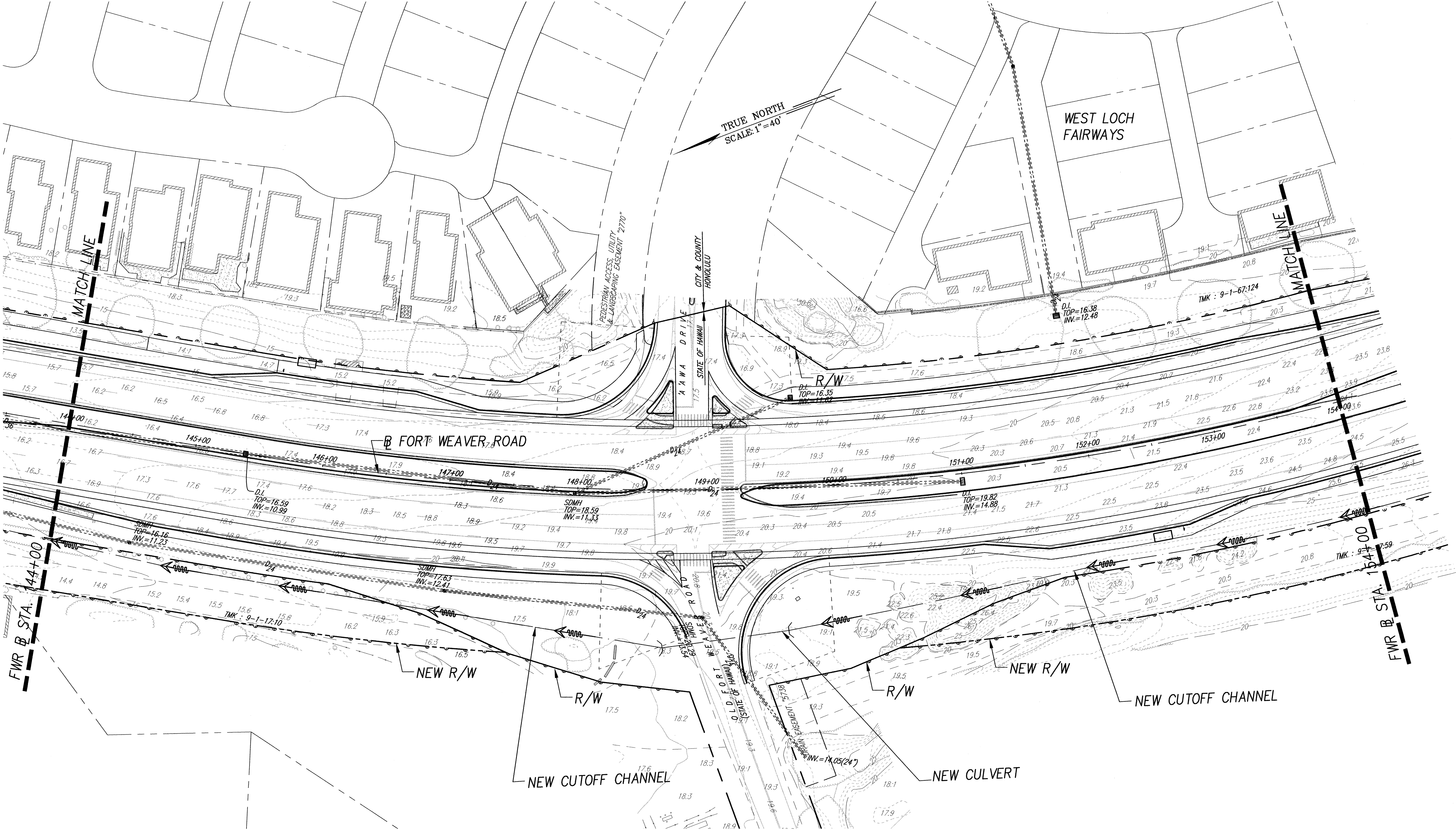
TRUE NORTH
SCALE: 1"=40'



SURVEY PLOTTED BY	DATE
DRAWN BY	
TRACED BY	
CHECKED BY	
NOTED BY	
NO.	

STATE OF HAWAII
DEPARTMENT OF TRANSPORTATION
HIGHWAYS DIVISION
DRAINAGE PLAN
BASELINE STA.133+00 TO STA.144+00
FORT WEAVER ROAD WIDENING
VICINITY OF AAWA DRIVE TO GEIGER ROAD
FEDERAL AID PROJECT NO. CMAQ-076-1(9)
SCALE: 1"=40' DATE: April 1, 2005
SHEET No. 2 OF 12 SHEETS

FED. ROAD DIST. NO.	STATE	FED. AID PROJ. NO.	FISCAL YEAR	SHEET NO.	TOTAL SHEETS
HAWAII	HAW.	CMAQ-076-1(9)	2005	29	64



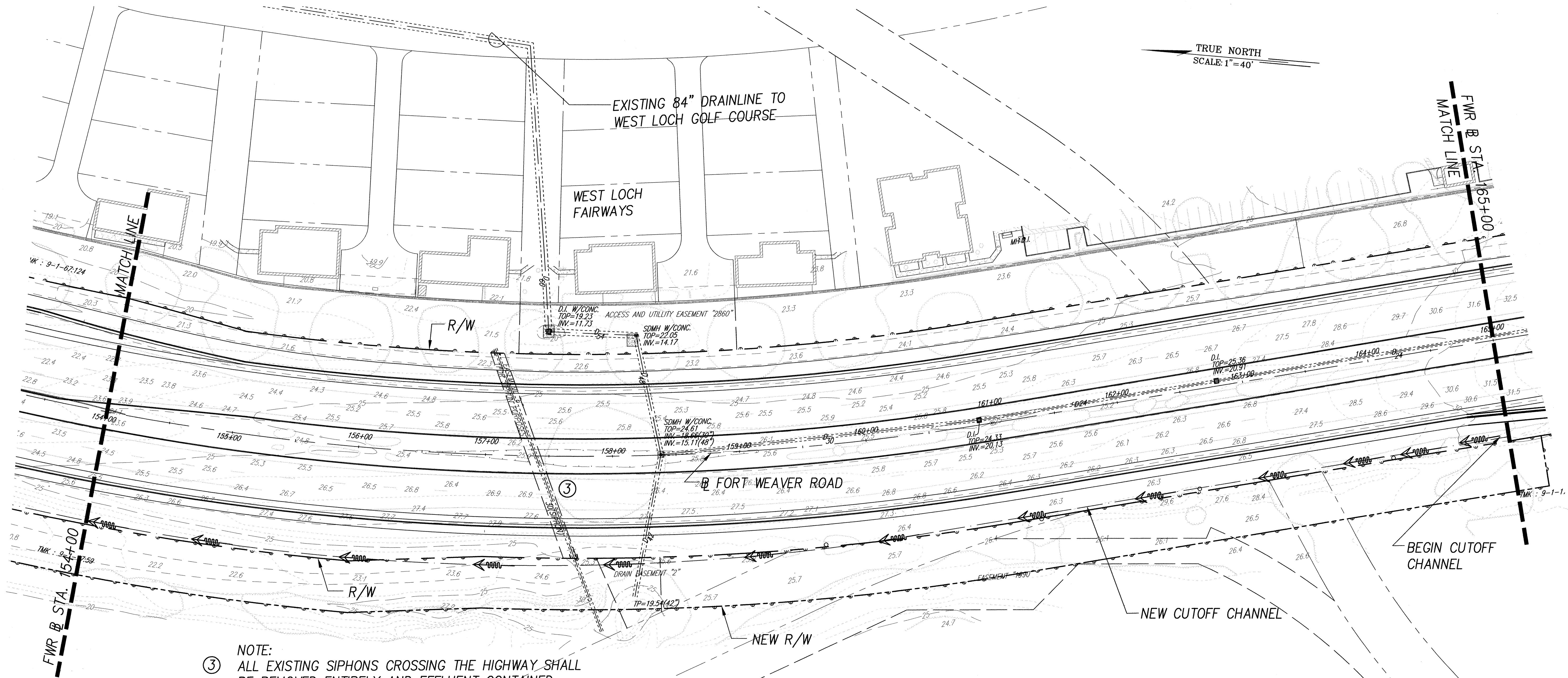
ORIGINAL PLAN	SURVEY PLOTTED BY	DATE
NOTE BOOK	DRAWN BY	" "
	TRACED BY	" "
	DESIGNED BY	" "
	CHECKED BY	" "
No.		

STATE OF HAWAII
DEPARTMENT OF TRANSPORTATION
HIGHWAYS DIVISION

DRAINAGE PLAN
BASELINE STA.144+00 TO STA.154+00
FORT WEAVER ROAD WIDENING
VICINITY OF AAWA DRIVE TO GEIGER ROAD
FEDERAL AID PROJECT NO. CMAQ-076-1(9)
SCALE: 1"=40'
DATE: April 1, 2005

SHEET No. 3 OF 12 SHEETS

FED. ROAD DIST. NO.	STATE	FED. AID PROJ. NO.	FISCAL YEAR	SHEET NO.	TOTAL SHEETS
HAWAII	HAW.	CMAQ-076-1(9)	2005	30	64



NOTE:
 ③ ALL EXISTING SIPHONS CROSSING THE HIGHWAY SHALL BE REMOVED ENTIRELY AND EFFLUENT CONTAINED WITHIN PROPERLY DISPOSED OF. SEGMENTS OUTSIDE THE ROW SHALL BE REMOVED IN ITS ENTIRETY AND THE GROUND RESTORED TO EQUAL OR BETTER CONDITIONS. THE CONTRACTOR SHALL OBTAIN THE WRITTEN APPROVAL OF THE LANDOWNERS IN WHICH THE SEGMENTS ARE LOCATED.

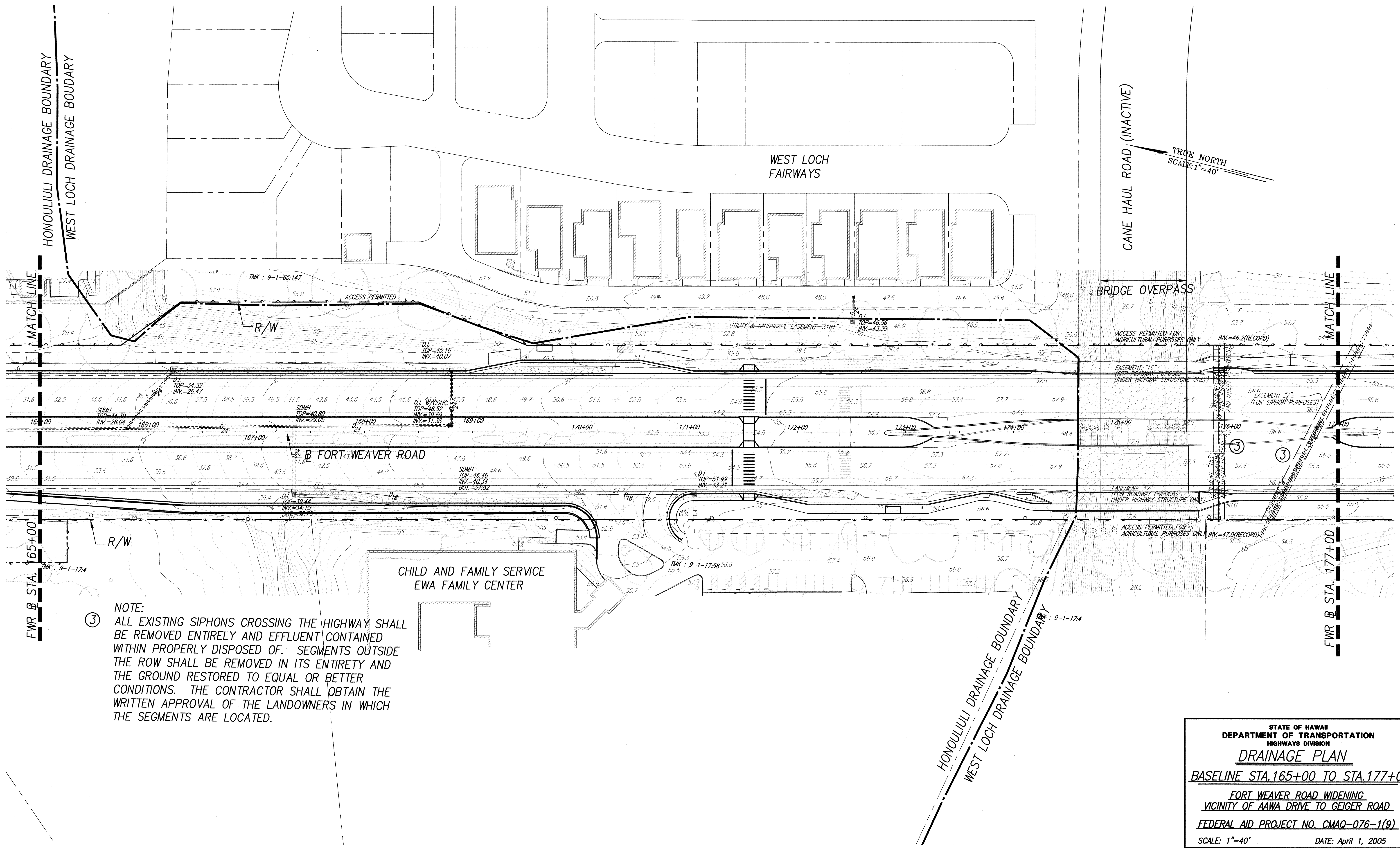
ORIGINAL PLAN	SURVEY PLOTTED BY	DATE
NOTE BOOK	DRAWN BY	
	DESIGNED BY	
	CHECKED BY	

STATE OF HAWAII
DEPARTMENT OF TRANSPORTATION
HIGHWAYS DIVISION

DRAINAGE PLAN
BASELINE STA.154+00 TO STA.165+00
FORT WEAVER ROAD WIDENING
VICINITY OF AAWA DRIVE TO GEIGER ROAD
FEDERAL AID PROJECT NO. CMAQ-076-1(9)
SCALE: 1"=40'
DATE: April 1, 2005

SHEET No. 4 OF 12 SHEETS

FED. ROAD DIST. NO.	STATE	FED. AID PROJ. NO.	FISCAL YEAR	SHEET NO.	TOTAL SHEETS
HAWAII	HAW.	CMAQ-076-1(9)	2005	31	64



③ NOTE: ALL EXISTING SIPHONS CROSSING THE HIGHWAY SHALL BE REMOVED ENTIRELY AND EFFLUENT CONTAINED WITHIN PROPERLY DISPOSED OF. SEGMENTS OUTSIDE THE ROW SHALL BE REMOVED IN ITS ENTIRETY AND THE GROUND RESTORED TO EQUAL OR BETTER CONDITIONS. THE CONTRACTOR SHALL OBTAIN THE WRITTEN APPROVAL OF THE LANDOWNERS IN WHICH THE SEGMENTS ARE LOCATED.

ORIGINAL PLAN	SURVEY PLOTTED BY	DATE
DESIGNED BY	DRAWN BY	
CHECKED BY	NOTED BY	
NO.		

STATE OF HAWAII
DEPARTMENT OF TRANSPORTATION
HIGHWAYS DIVISION

DRAINAGE PLAN

BASELINE STA.165+00 TO STA.177+00

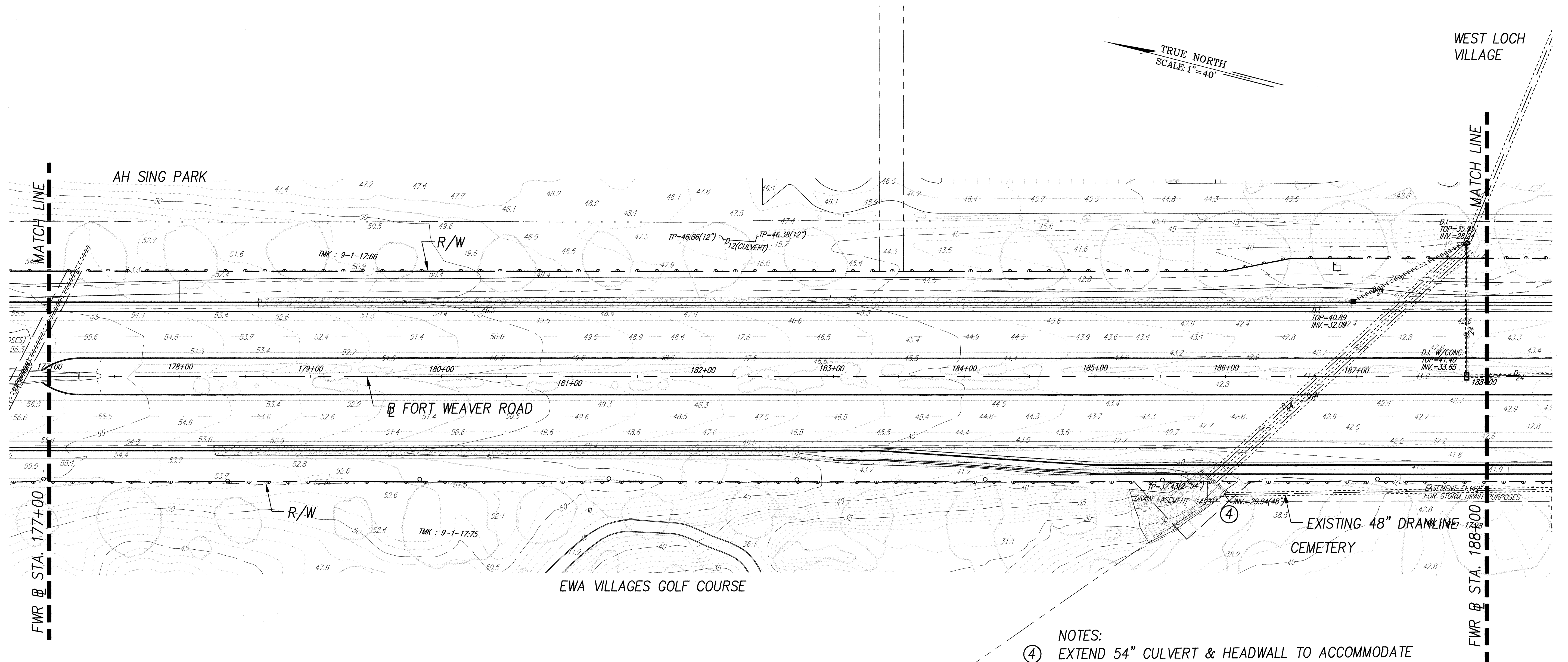
FORT WEAVER ROAD WIDENING
VICINITY OF AAWA DRIVE TO GEIGER ROAD

FEDERAL AID PROJECT NO. CMAQ-076-1(9)

SCALE: 1"=40' DATE: April 1, 2005

SHEET No. 5 OF 12 SHEETS

FED. ROAD DIST. NO.	STATE	FED. AID PROJ. NO.	FISCAL YEAR	SHEET NO.	TOTAL SHEETS
HAWAII	HAW.	CMAQ-076-1(9)	2005	32	64



- NOTES:
- ④ EXTEND 54" CULVERT & HEADWALL TO ACCOMMODATE WIDENING AND REALIGN EXISTING 48" DRAINLINE TO ENTER 54" DRAINLINE AT AN ANGLE 90° OR LESS.

ORIGINAL PLAN	SURVEY PLOTTED BY	DATE
NOTE BOOK	DRAWN BY	
	DESIGNED BY	
	QUANTITIES BY	
	CHECKED BY	

STATE OF HAWAII
DEPARTMENT OF TRANSPORTATION
HIGHWAYS DIVISION

DRAINAGE PLAN

BASELINE STA. 177+00 TO STA. 188+00

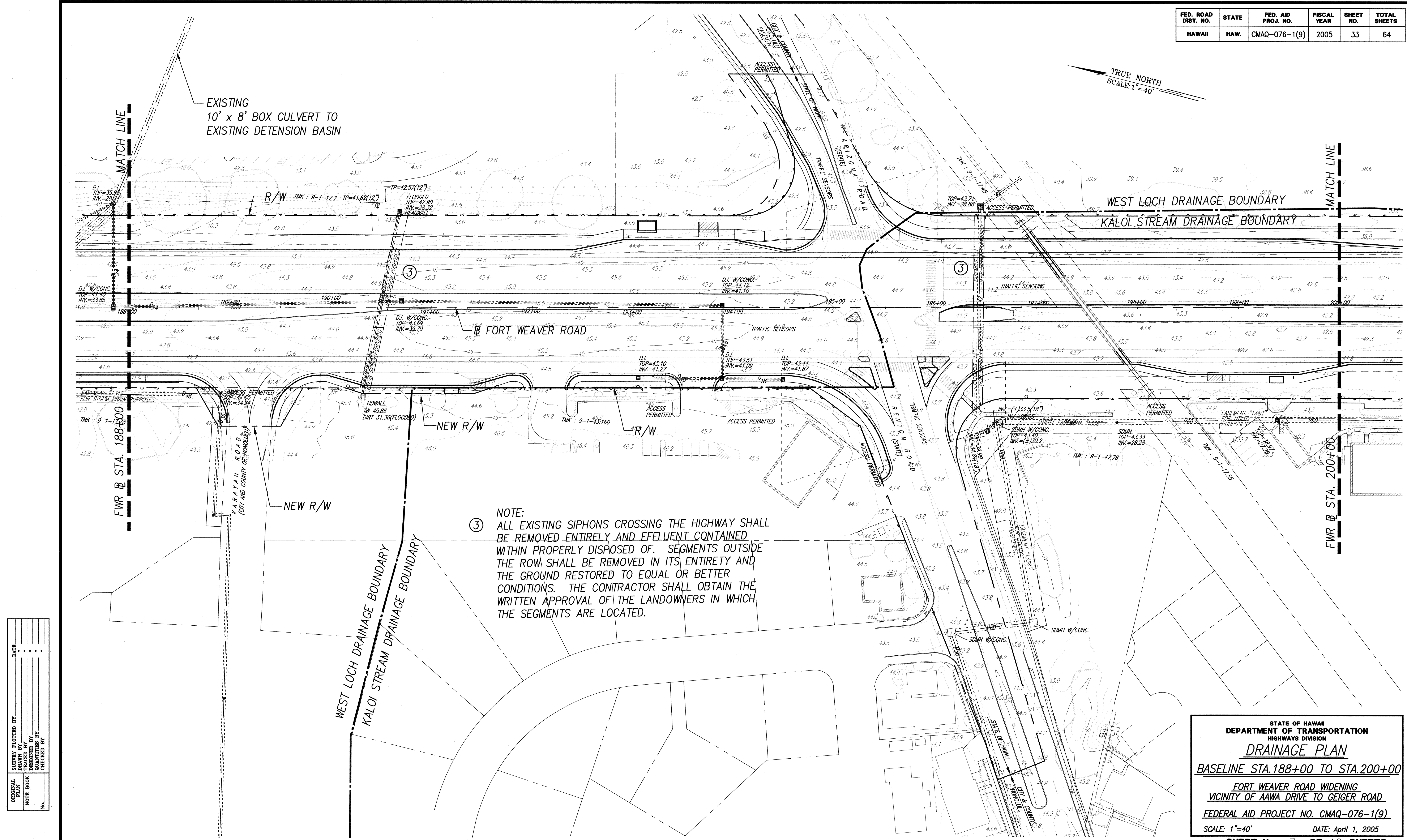
FORT WEAVER ROAD WIDENING
VICINITY OF AAWA DRIVE TO GEIGER ROAD

FEDERAL AID PROJECT NO. CMAQ-076-1(9)

SCALE: 1"=40' DATE: April 1, 2005

SHEET No. 6 OF 12 SHEETS

FED. ROAD DIST. NO.	STATE	FED. AID PROJ. NO.	FISCAL YEAR	SHEET NO.	TOTAL SHEETS
HAWAII	HAW.	CMAQ-076-1(9)	2005	33	64



NOTE:
③ ALL EXISTING SIPHONS CROSSING THE HIGHWAY SHALL BE REMOVED ENTIRELY AND EFFLUENT CONTAINED WITHIN PROPERLY DISPOSED OF. SEGMENTS OUTSIDE THE ROW SHALL BE REMOVED IN ITS ENTIRETY AND THE GROUND RESTORED TO EQUAL OR BETTER CONDITIONS. THE CONTRACTOR SHALL OBTAIN THE WRITTEN APPROVAL OF THE LANDOWNERS IN WHICH THE SEGMENTS ARE LOCATED.

ORIGINAL PLAN	SURVEY PLOTTED BY	DATE
NOTE BOOK	DRAWN BY	
	DESIGNED BY	
	CHECKED BY	

STATE OF HAWAII
DEPARTMENT OF TRANSPORTATION
HIGHWAYS DIVISION

DRAINAGE PLAN

BASELINE STA.188+00 TO STA.200+00

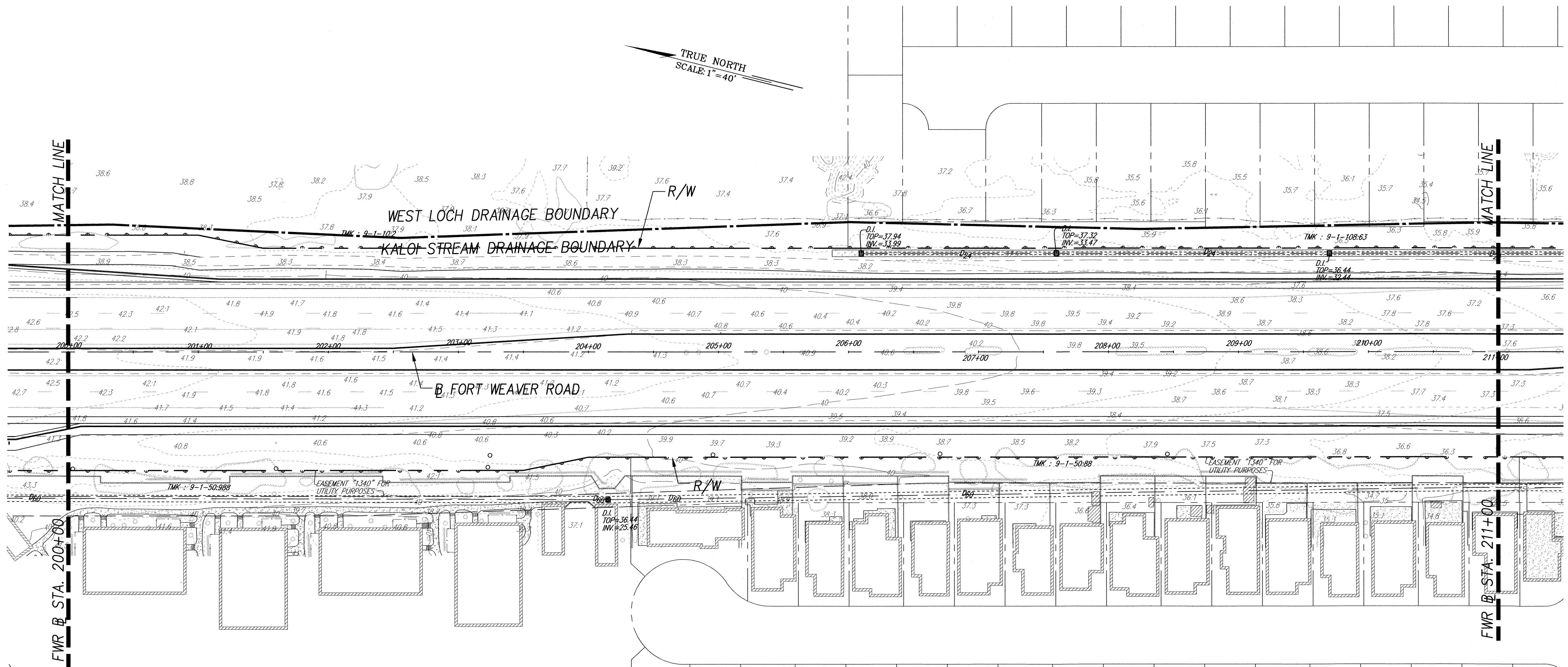
FORT WEAVER ROAD WIDENING
VICINITY OF AAWA DRIVE TO GEIGER ROAD

FEDERAL AID PROJECT NO. CMAQ-076-1(9)

SCALE: 1"=40' DATE: April 1, 2005

SHEET No. 7 OF 12 SHEETS

FED. ROAD DIST. NO.	STATE	FED. AID PROJ. NO.	FISCAL YEAR	SHEET NO.	TOTAL SHEETS
HAWAII	HAW.	CMAQ-076-1(9)	2005	34	64



ORIGINAL PLAN	SURVEY PLOTTED BY	DATE
NOTE BOOK	DRAWN BY	
No.	DESIGNED BY	
	QUANTITIES BY	
	CHECKED BY	

STATE OF HAWAII
DEPARTMENT OF TRANSPORTATION
HIGHWAYS DIVISION

DRAINAGE PLAN

BASELINE STA.200+00 TO STA.211+00

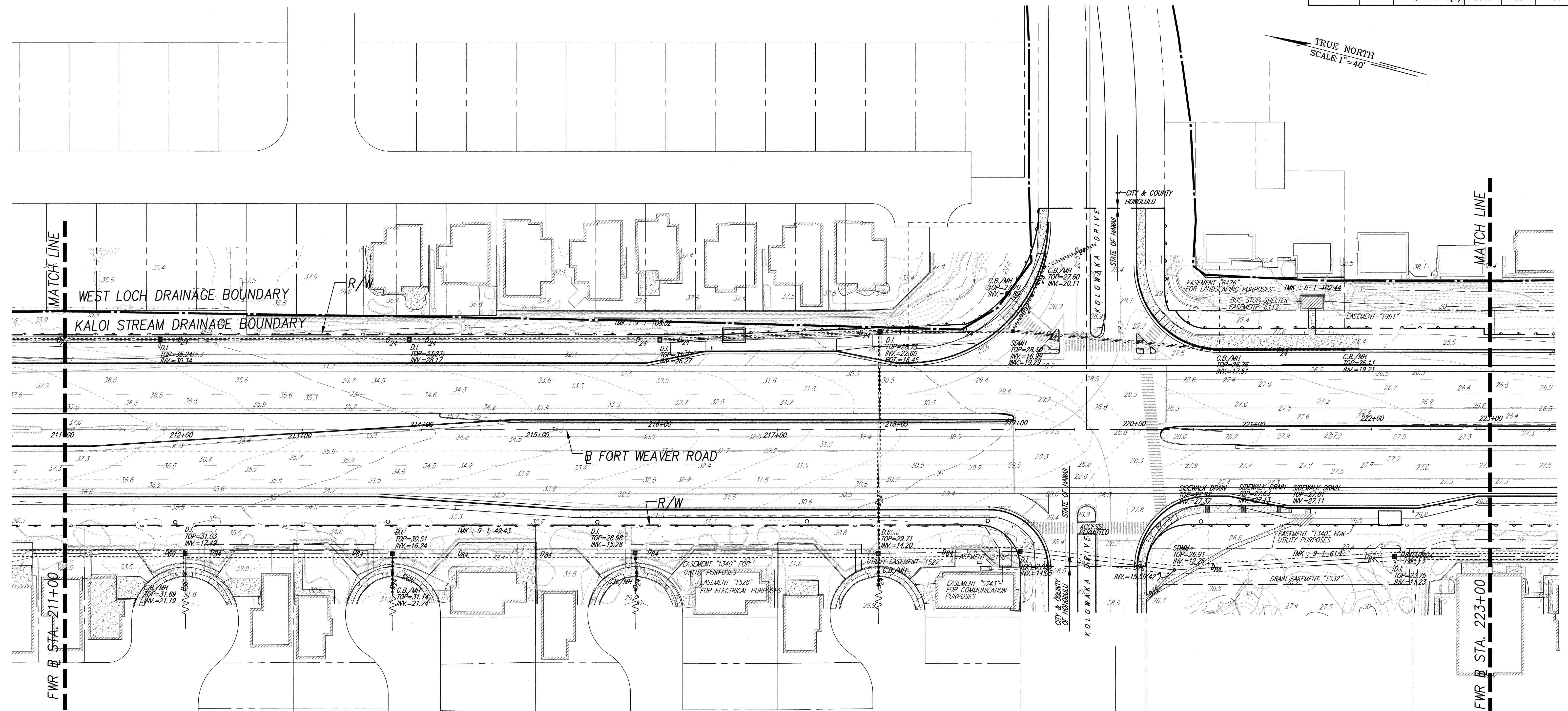
FORT WEAVER ROAD WIDENING
VICINITY OF AAWA DRIVE TO GEIGER ROAD

FEDERAL AID PROJECT NO. CMAQ-076-1(9)

SCALE: 1"=40' DATE: April 1, 2005

SHEET No. 8 OF 12 SHEETS

FED. ROAD DIST. NO.	STATE	FED. AID PROJ. NO.	FISCAL YEAR	SHEET NO.	TOTAL SHEETS
HAWAII	HAW.	CMAQ-076-1(9)	2005	35	64



EXISTING LONGITUDINAL ROAD GRADES ARE LESS THAN HALF A PERCENT AND WILL REQUIRE SPECIAL DRAINAGE DESIGN.

ORIGINAL PLAN	SURVEY PLOTTED BY _____ DATE _____
NOTE BOOK	DRAWN BY _____
	TRACED BY _____
	DESIGNED BY _____
	QUANTITIES BY _____
No. _____	CHECKED BY _____

STATE OF HAWAII
DEPARTMENT OF TRANSPORTATION
HIGHWAYS DIVISION

DRAINAGE PLAN

BASELINE STA. 211+00 TO STA. 223+00

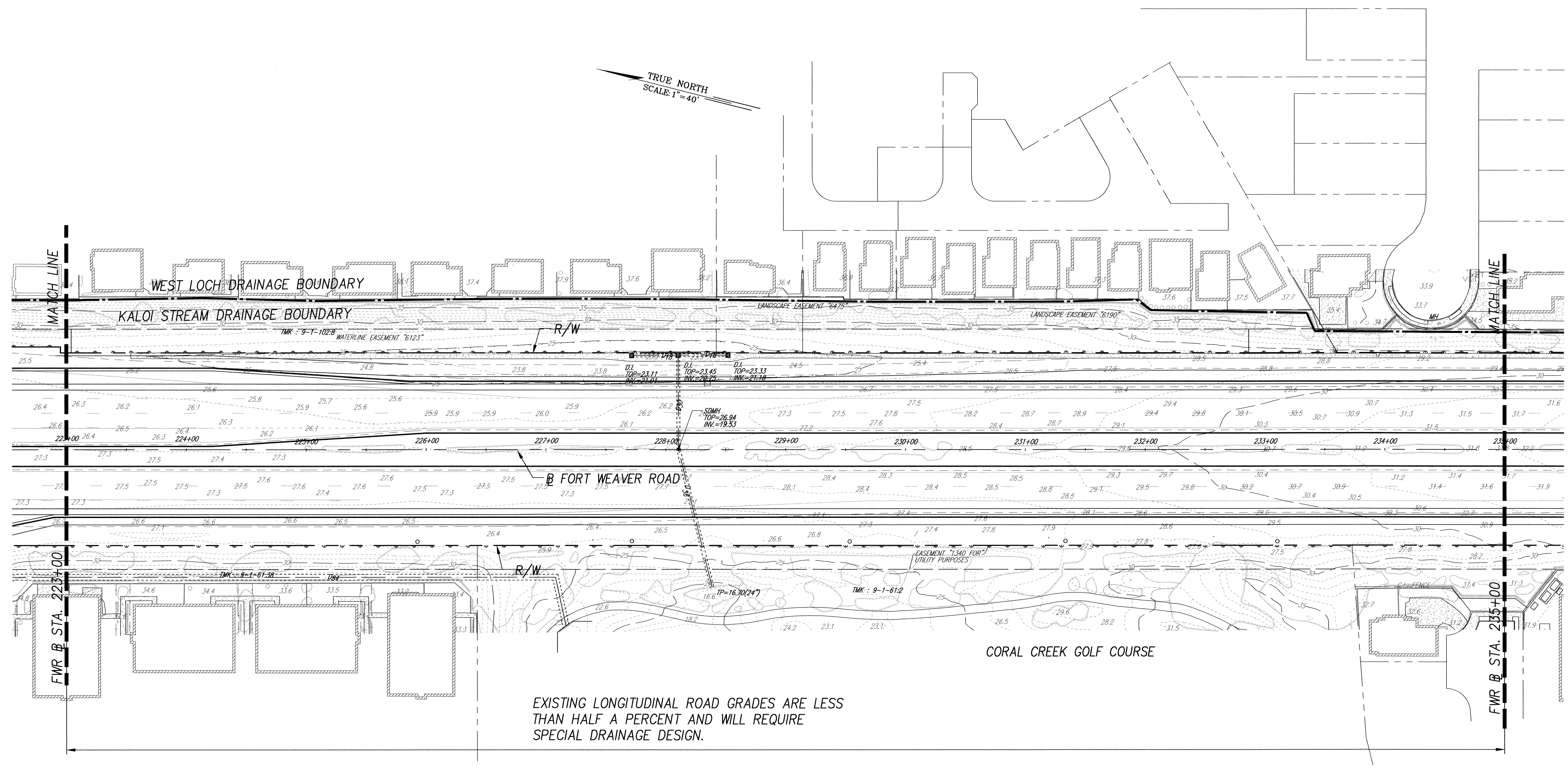
FORT WEAVER ROAD WIDENING
VICINITY OF AAWA DRIVE TO GEIGER ROAD

FEDERAL AID PROJECT NO. CMAQ-076-1(9)

SCALE: 1"=40' DATE: April 1, 2005

SHEET No. 9 OF 12 SHEETS

FED. ROAD DIST. NO.	STATE	FED. AID PROJ. NO.	FISCAL YEAR	SHEET NO.	TOTAL SHEETS
HAWAII	HAW.	CMAQ-076-1(9)	2005	36	64



ORIGINAL PLAN	SURVEY PLOTTED BY	DATE
	DRAWN BY	
	TRACED BY	
	NOTED BY	
NOTE BOOK	QUANTITY BY	
	CHECKED BY	
No.		

STATE OF HAWAII
DEPARTMENT OF TRANSPORTATION
HIGHWAYS DIVISION

DRAINAGE PLAN

BASELINE STA.223+00 TO STA.235+00

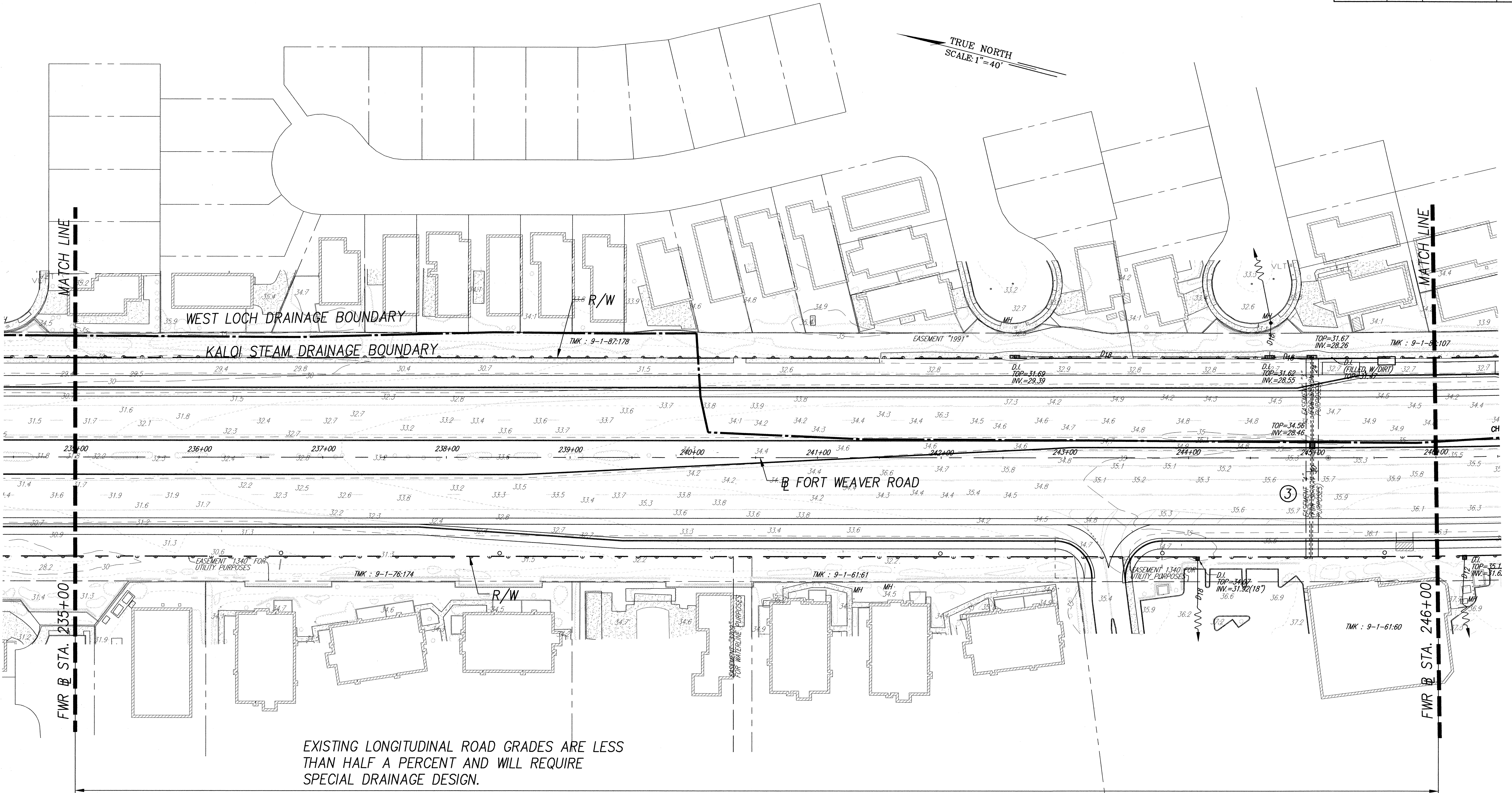
FORT WEAVER ROAD WIDENING
VICINITY OF AAWA DRIVE TO GEIGER ROAD

FEDERAL AID PROJECT NO. CMAQ-076-1(9)

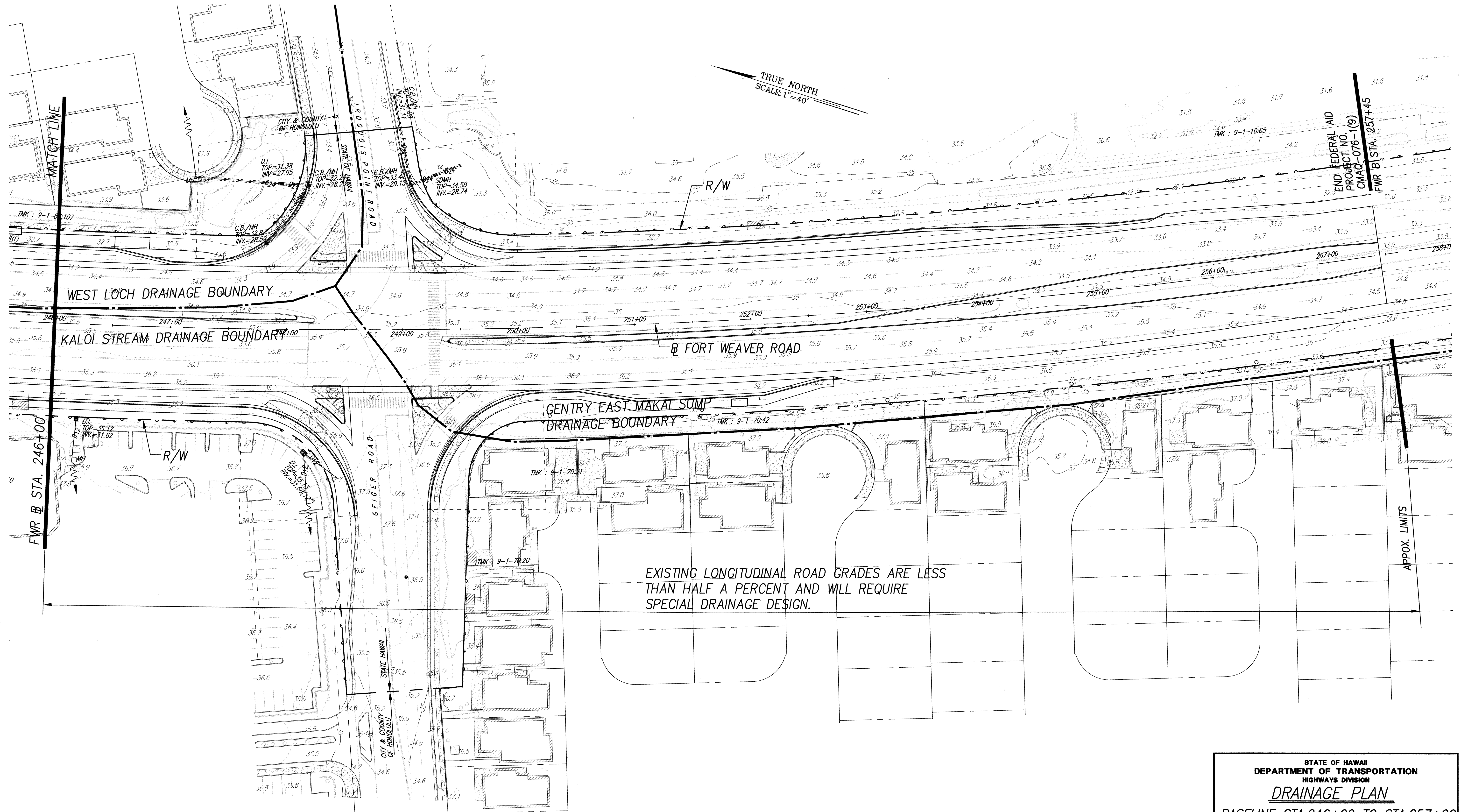
SCALE: 1"=40' DATE: April 1, 2005

SHEET No. 10 OF 12 SHEETS

FED. ROAD DIST. NO.	STATE	FED. AID PROJ. NO.	FISCAL YEAR	SHEET NO.	TOTAL SHEETS
HAWAII	HAW.	CMAQ-076-1(9)	2005	37	64



FED. ROAD DIST. NO.	STATE	FED. AID PROJ. NO.	FISCAL YEAR	SHEET NO.	TOTAL SHEETS
HAWAII	HAW.	CMAQ-076-1(9)	2005	38	64



ORIGINAL PLAN	SURVEY PLOTTED BY	DATE
NOTE BOOK	DRAWN BY	
No.	TRACED BY	
	QUANTITIES BY	
	CHECKED BY	

STATE OF HAWAII
DEPARTMENT OF TRANSPORTATION
HIGHWAYS DIVISION

DRAINAGE PLAN

BASLINE STA.246+00 TO STA.257+00

FORT WEAVER ROAD WIDENING
VICINITY OF AWA DRIVE TO GEIGER ROAD

FEDERAL AID PROJECT NO. CMAQ-076-1(9)

SCALE: 1"=40' DATE: April 1, 2005

SHEET No. 12 OF 12 SHEETS