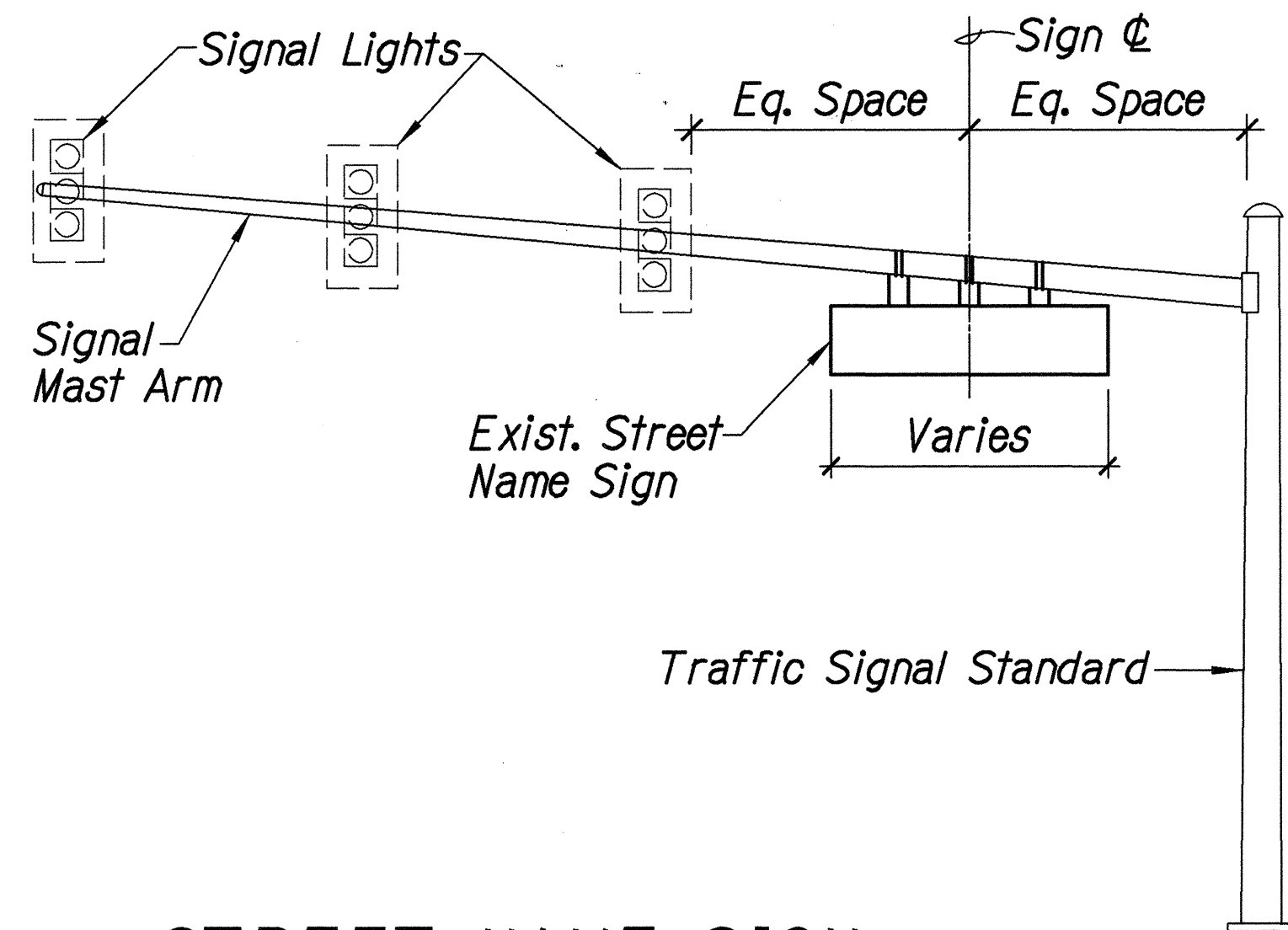


FED. ROAD DIST. NO.	STATE	FED. AID PROJ. NO.	FISCAL YEAR	SHEET NO.	TOTAL SHEETS
HAWAII	HAW.	CMAQ-076-1(6)	2001	30	33

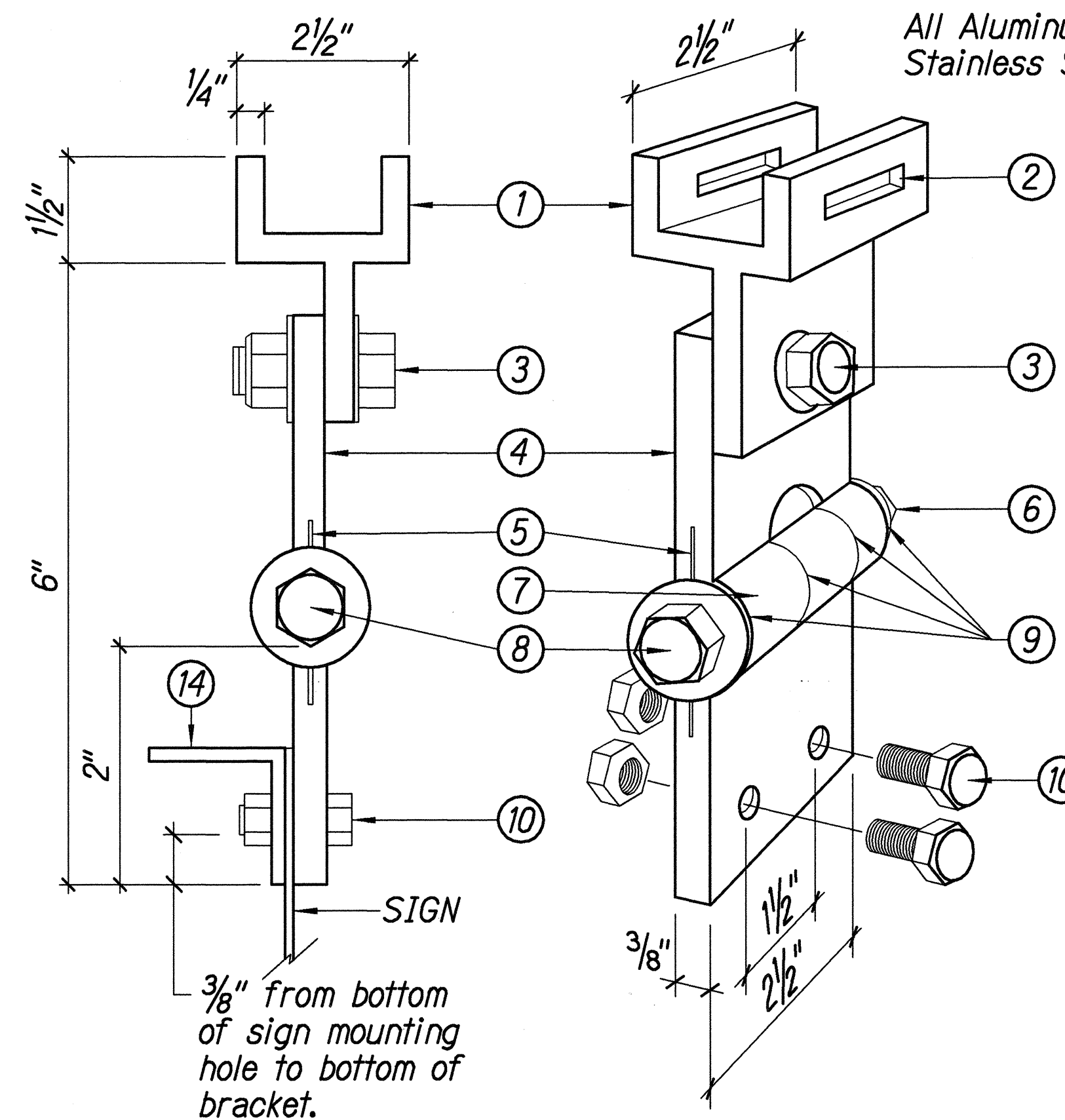


**STREET NAME SIGN
MOUNTING ON MAST ARM** 1
Not to Scale 30

MATERIAL CALLOUT

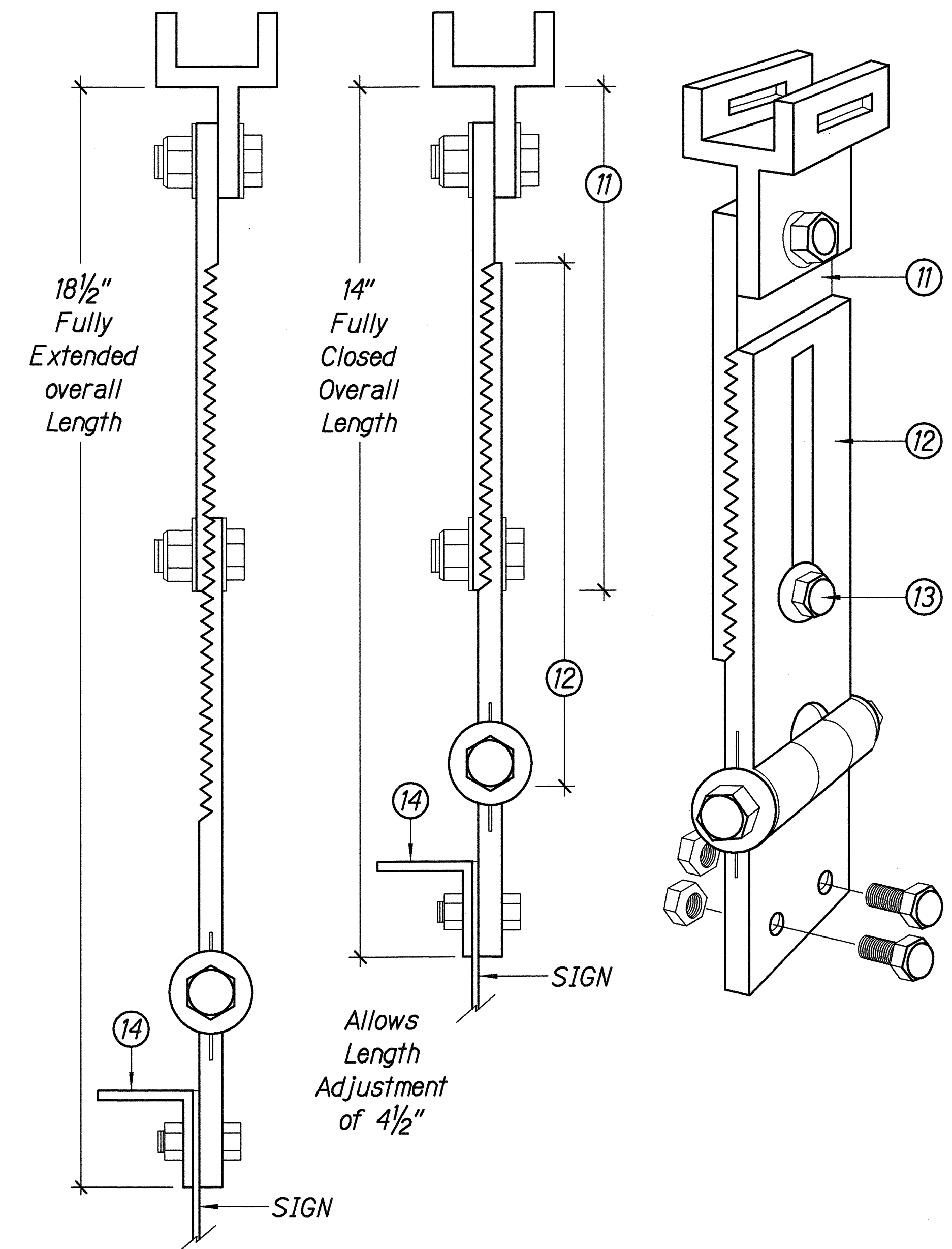
- ① Pivotal Upper Bracket
- ② $1\frac{5}{8}" \times \frac{1}{4}"$ Slot for double strapping to electrolier mast arm. (M2G-34S(HD) .030" $\times \frac{3}{4}"$ Heavy Duty Stainless Steel Strap with M2G-34B(HD) Buckle recommended.
- ③ $\frac{1}{2}" - 13 \times 1\frac{1}{2}"$ Stainless Steel Hex Head Bolt with Stainless Steel Hex Lock Nut and $\frac{1}{16}"$ Stainless Steel Washer (both sides). Allows upper bracket to pivot and align with electrolier mast arm.
- ④ 6" Overall drop with Fixed Length Sign Bracket
- ⑤ Stainless Steel Dampener Spring (Removable)
- ⑥ Stainless Steel Hex Lock Nut with $\frac{1}{16}"$ Stainless Steel Washer
- ⑦ 1" O.D. Axle Housing
- ⑧ $\frac{1}{2}" - 13 \times 4"$ Stainless Steel Hex Head Bolt with $\frac{1}{16}"$ Stainless Steel Washer.
- ⑨ Oilite Bushing
- ⑩ Sign Mounting Sets, consisting of two each $\frac{5}{16}" - 18 \times 1"$ Stainless Steel Hex Head Bolt with Stainless Steel Hex Lock Nut. Two holes on $1\frac{1}{2}"$ centers provide positive lock sign mounting to bracket.
- ⑪ $8\frac{1}{4}"$ overall length Upper Adjustable Sign Bracket section
- ⑫ 9" overall length Lower Adjustable Sign Bracket section, including Axle Housing (8" overall length to top of Axle Housing).
- ⑬ $\frac{1}{2}" - 13 \times 1\frac{1}{2}"$ Stainless Steel Hex Bolt with Stainless Steel Hex Lock Nut and $\frac{1}{16}"$ Stainless Steel Washers (both sides). Loosen lock nut, adjust bracket teeth to level sign.
- ⑭ $1\frac{1}{4}" \times 1\frac{1}{4}" \times \frac{1}{8}"$ Aluminum Angle

Note: Dimensions may vary slightly.



**FIXED LENGTH NON-ADJUSTABLE
SWING SIGN BRACKET** 2
Not to Scale 30

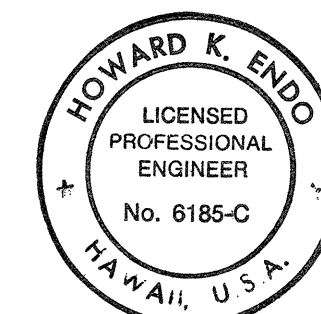
All Aluminum 6061T6 Alloy and
Stainless Steel Components.



ADJUSTABLE LENGTH SWING SIGN BRACKET 3
Not to Scale 30

SURVEY PLOTTED BY	DATE
DESIGNED BY	
TRACED BY	
QUANTITIES BY	
CHECKED BY	
ORIGINAL FILED	
NOTE BOOK	
NO.	

continued on



THIS WORK WAS PREPARED BY ME
OR UNDER MY SUPERVISION
Howard K. Endo
SHIMABUKURO, ENDO & YOSHIZAKI, INC.
1126 12TH AVENUE
Honolulu, Hawaii 96816

STATE OF HAWAII DEPARTMENT OF TRANSPORTATION HIGHWAYS DIVISION	
MAST ARM SIGN MOUNTING DETAIL	
Fort Weaver Road Traffic Signal Modernization Federal-Aid Project No. CMAQ-076-1(6)	
Scale: As Noted	Date: Sept., 2000
SHEET No. 1 OF 1 SHEETS	