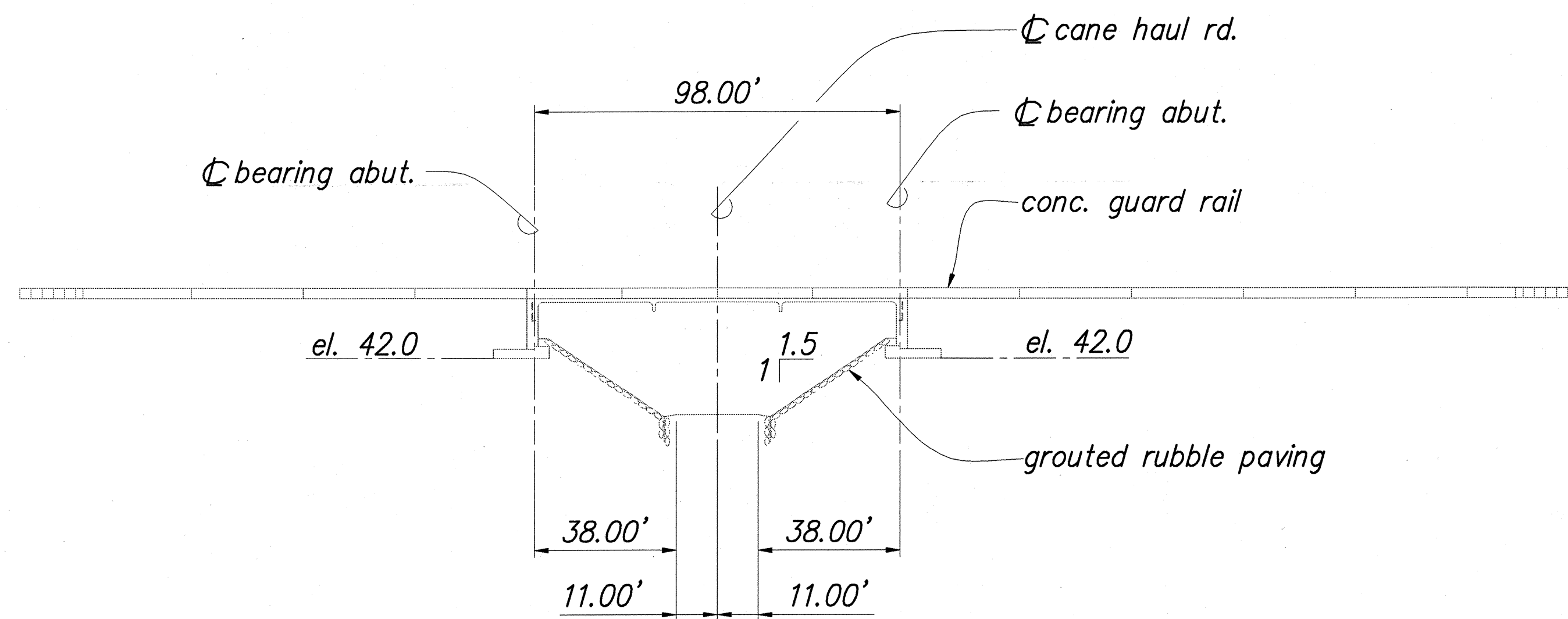
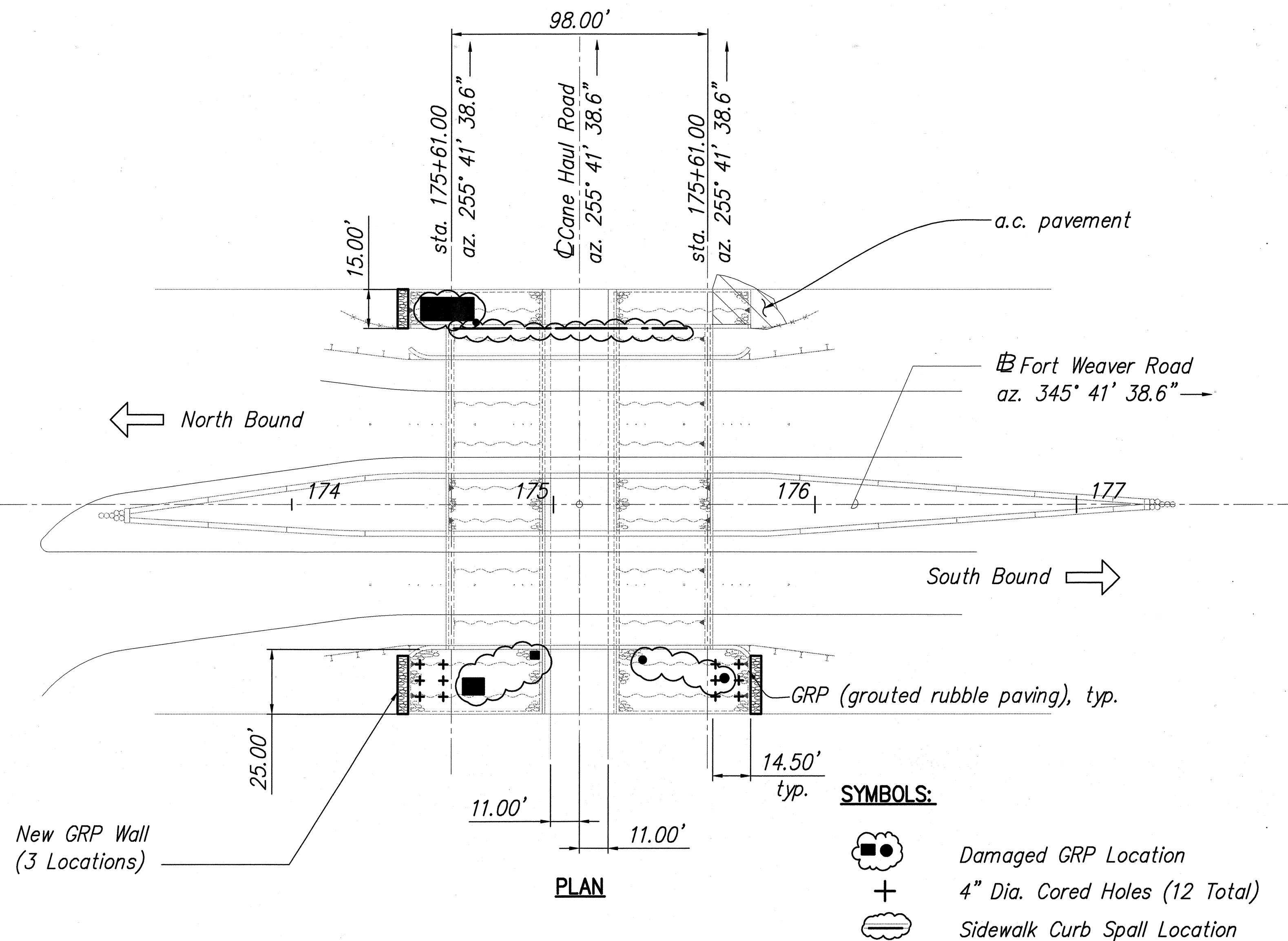
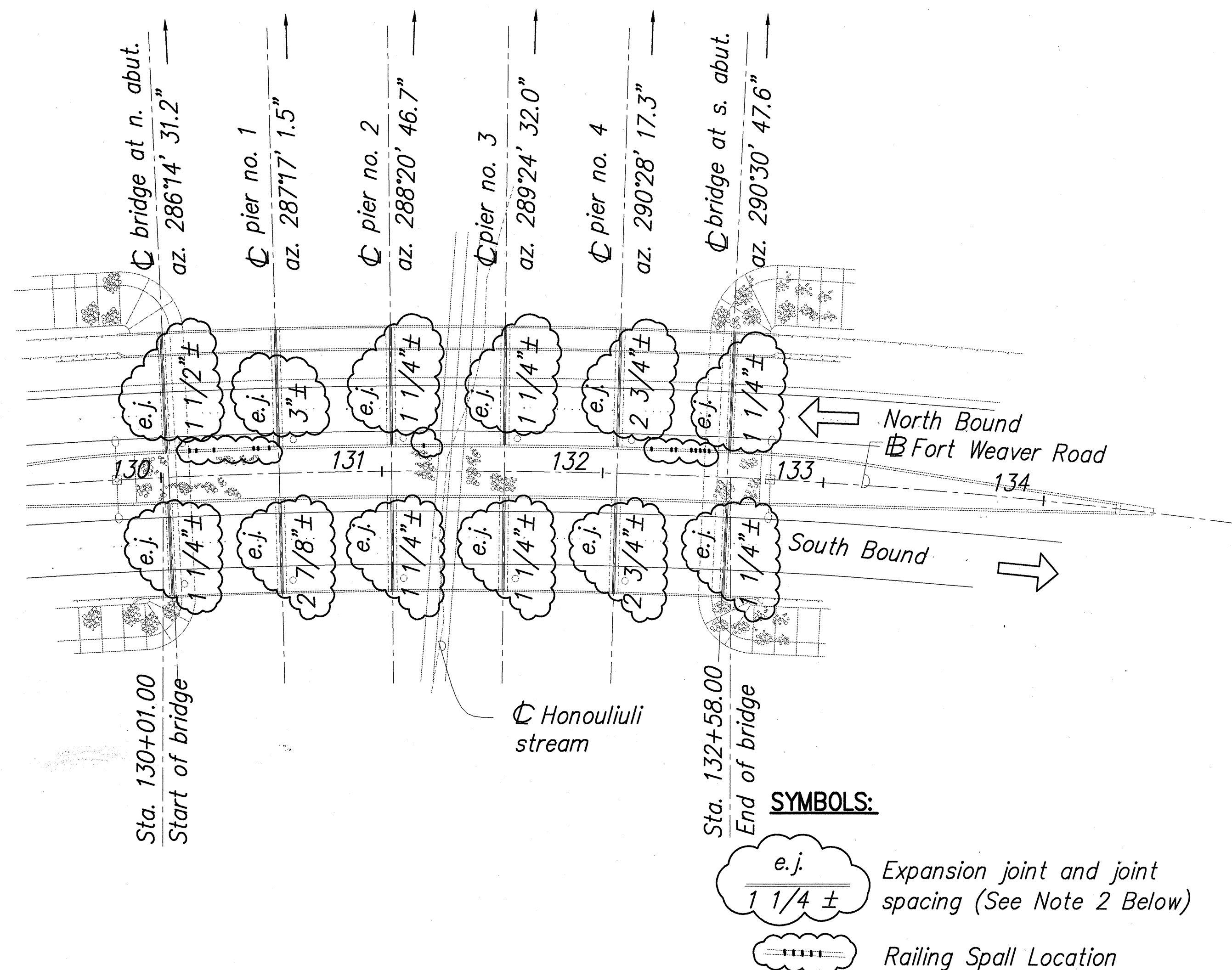


FED. ROAD DIST. NO.	STATE	PROJ. NO.	FISCAL YEAR	SHEET NO.	TOTAL SHEETS
HAWAII	HAW.	STP-076-1(5)	2000	55	83

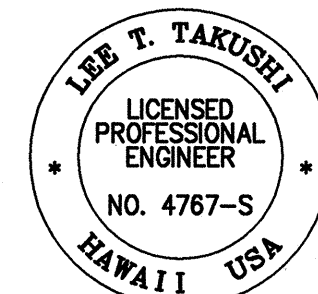


CANE HAUL UNDERPASS BRIDGE
SCALE: 1" = 30'



NOTES:

- Damaged locations and 4" Cored Hole Locations are for illustration purpose only. Actual locations to be determined by the Engineer in the field.
- Expansion joint width shown on plan is approximate value. Contractor shall field verify.
- See sheet 10 and 12 for bridge locations.



THIS WORK WAS PREPARED BY ME
OR UNDER MY SUPERVISION.

Lee T. Takushi

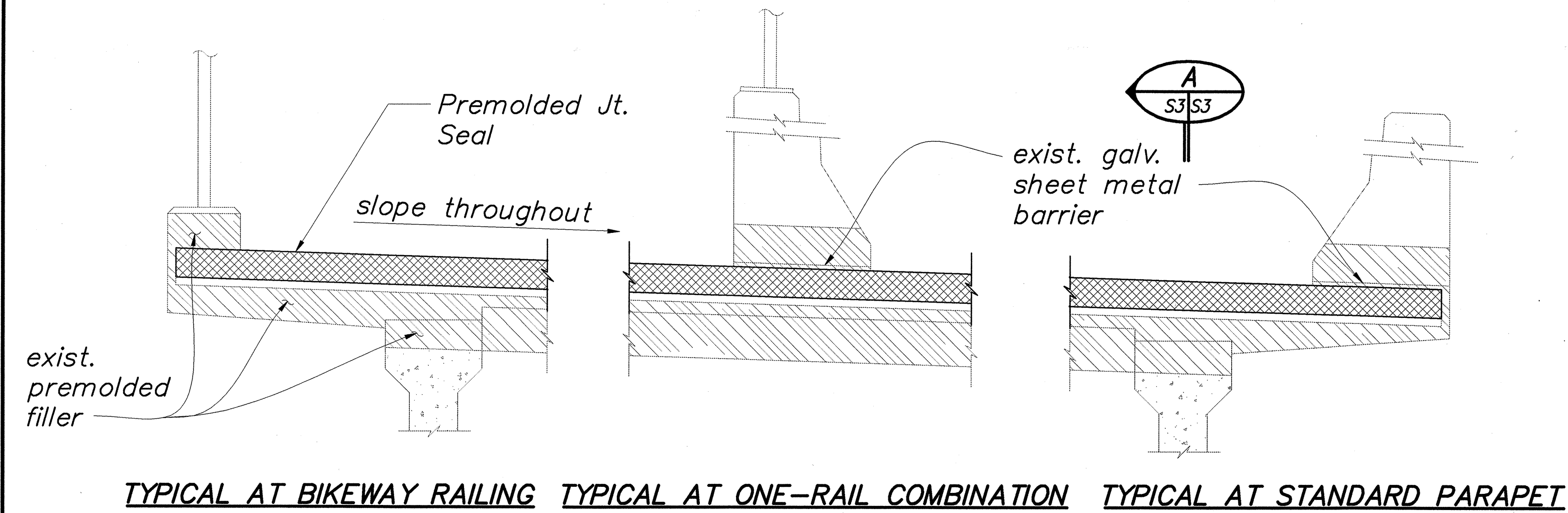
STATE OF HAWAII
DEPARTMENT OF TRANSPORTATION
HIGHWAYS DIVISION

BRIDGE REPAIR LAYOUT PLAN

FORT WEAVER ROAD RESURFACING
N. of Lualaunui St. to the Vicinity of Hanakahi St.
F. A. Project No. STP-076-1(5)
Scale: As Noted October 1999

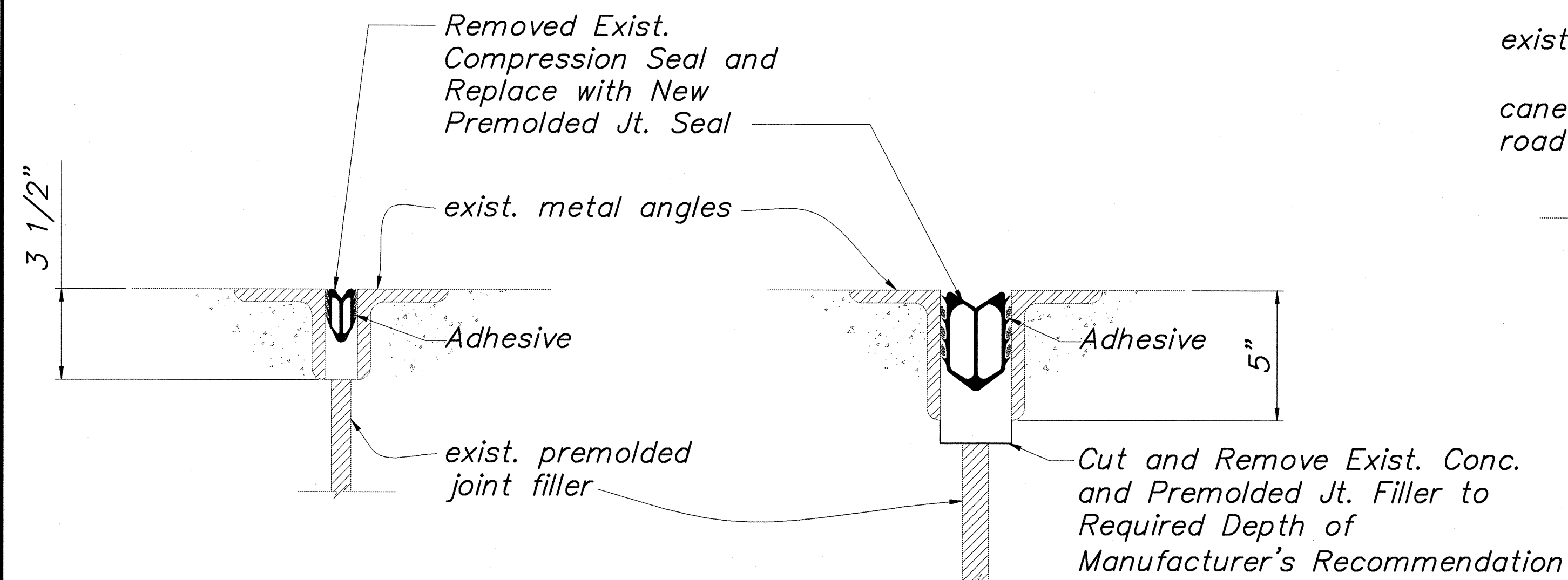
SHEET No. S1 OF 3 SHEETS

FED. ROAD DIST. NO.	STATE	PROJ. NO.	FISCAL YEAR	SHEET NO.	TOTAL SHEETS
HAWAII	HAW.	STP-076-1(5)	2000	57	83



TYPICAL AT BIKEWAY RAILING TYPICAL AT ONE-RAIL COMBINATION TYPICAL AT STANDARD PARAPET

HONOULIULI STREAM BRIDGE
TYPICAL SECTION AT DECK EXPANSION JOINT DETAIL
 NOT TO SCALE

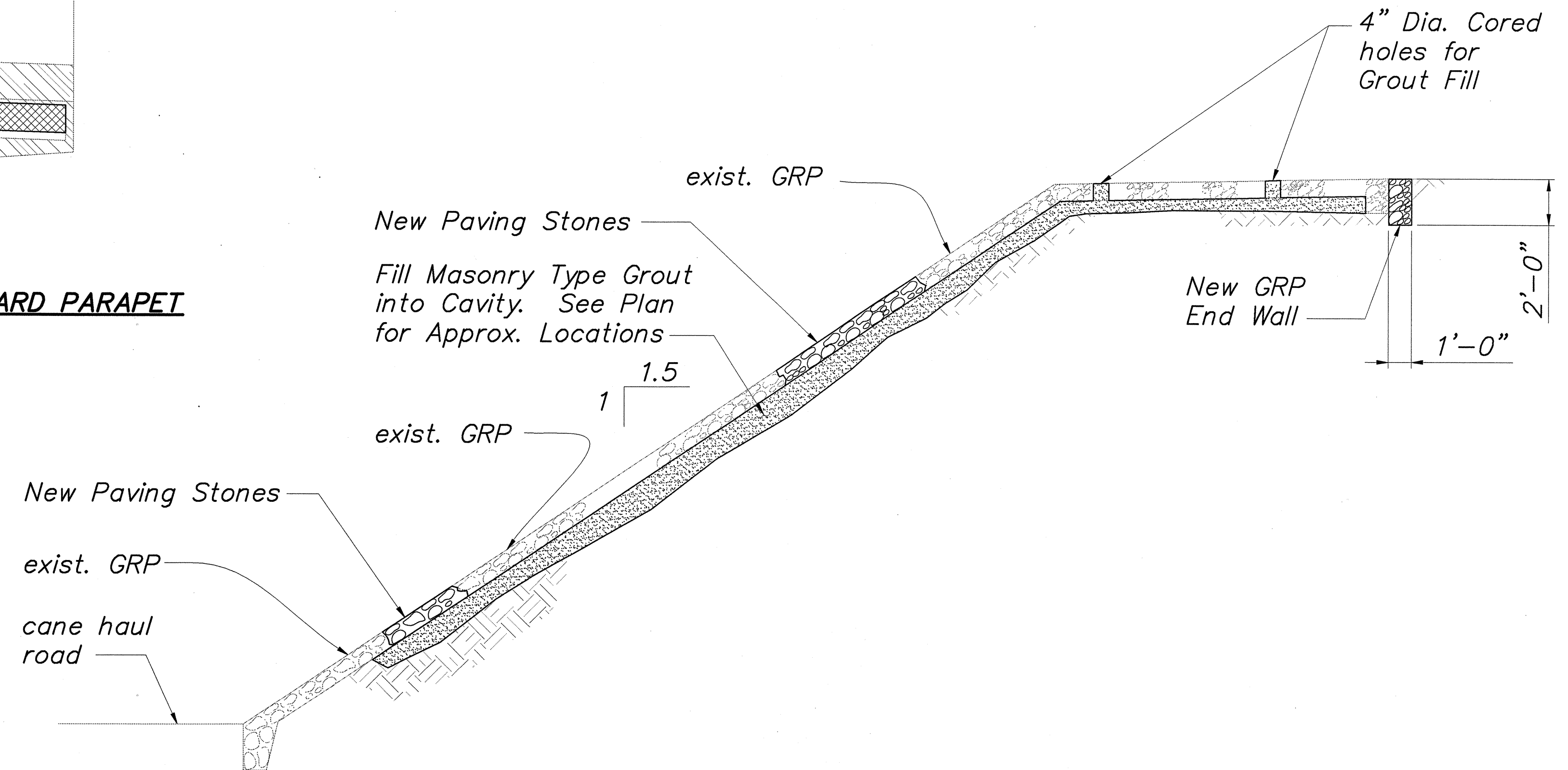


AT N. ABUT., S. ABUT., PIER #2 AND #3 AT PIER #1 AND #4

HONOULIULI STREAM BRIDGE
DECK EXPANSION JOINT SECTIONS
 SCALE: 3" = 1'-0"

ESTIMATED QUANTITIES			
ITEM NO.	ITEM	QUANTITY	UNIT
612.0100	Grouted Rubble Paving End Wall - Cane Haul Underpass	5	CU. YD.
655.0100	Grout Fill for GRP Repair-Cane Haul Underpass	200*	CU. YD.
677.0100	Premolded Joint Seals (567 L.F.)-Honouliuli Bridge	L.S.	L.S.

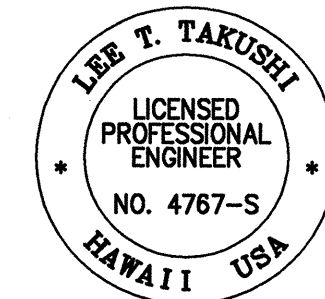
* Indicates estimated overrun



CANE HAUL UNDERPASS BRIDGE GRP REPAIR DETAIL
 NOT TO SCALE

ORIGINAL PLAN	DATE
DESIGNED BY	
CHECKED BY	
NOTED BY	
QUANTITIES BY	
DATE	

I:\1998\9800104\DWGS\DETL\98_104D05.DWG 09/08/98 09:41 DY



THIS WORK WAS PREPARED BY ME
 OR UNDER MY SUPERVISION.

[Signature]

STATE OF HAWAII
DEPARTMENT OF TRANSPORTATION
HIGHWAYS DIVISION
EXPANSION JOINT REPLACEMENT
DETAILS
FORT WEAVER ROAD RESURFACING
N. of Laulaunui St. to the Vicinity of Hanakahi St.
F. A. Project No. STP-076-1(5)
Scale: As Noted October 1999

SHEET No. 57 OF 83 SHEETS