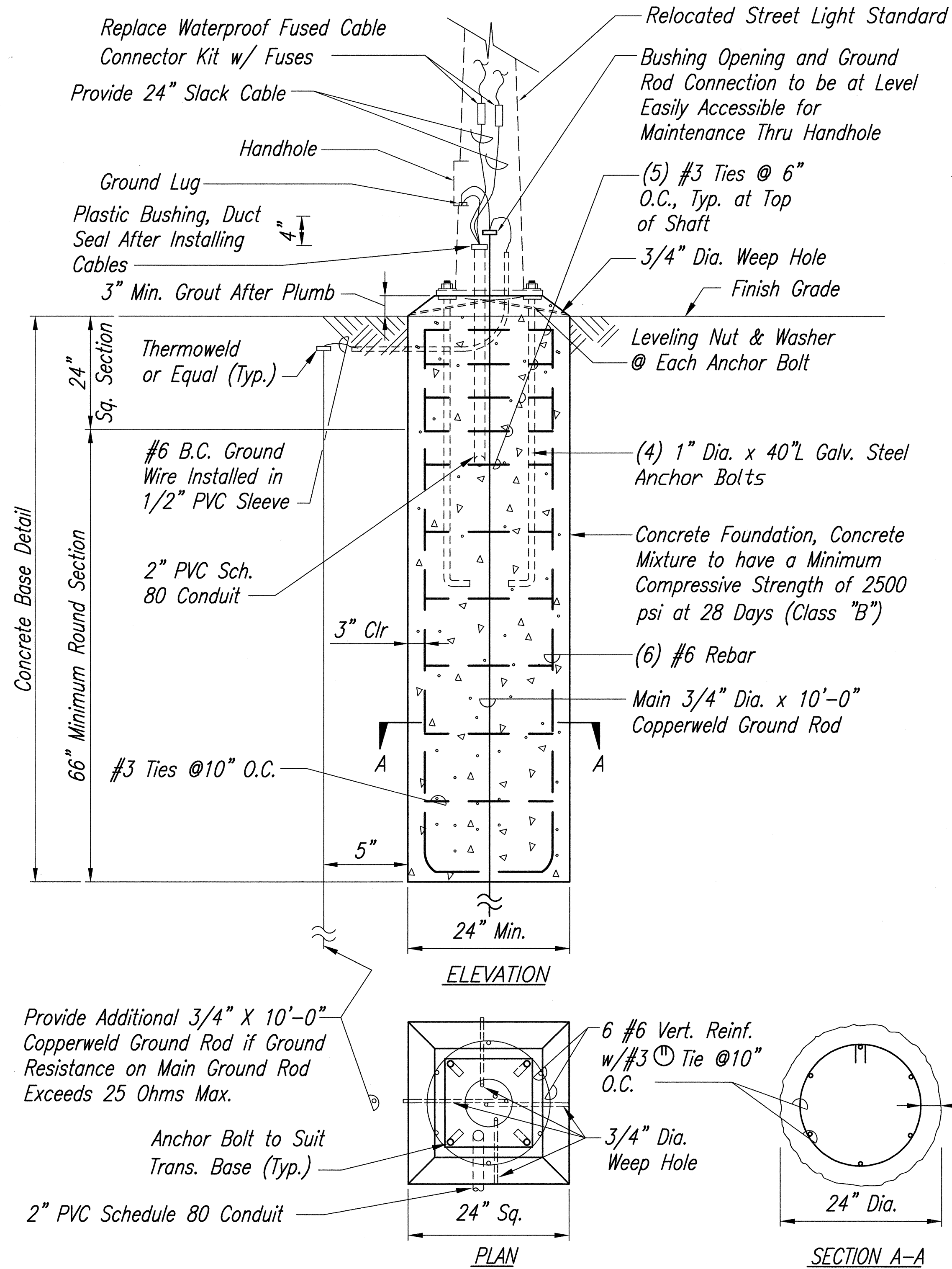
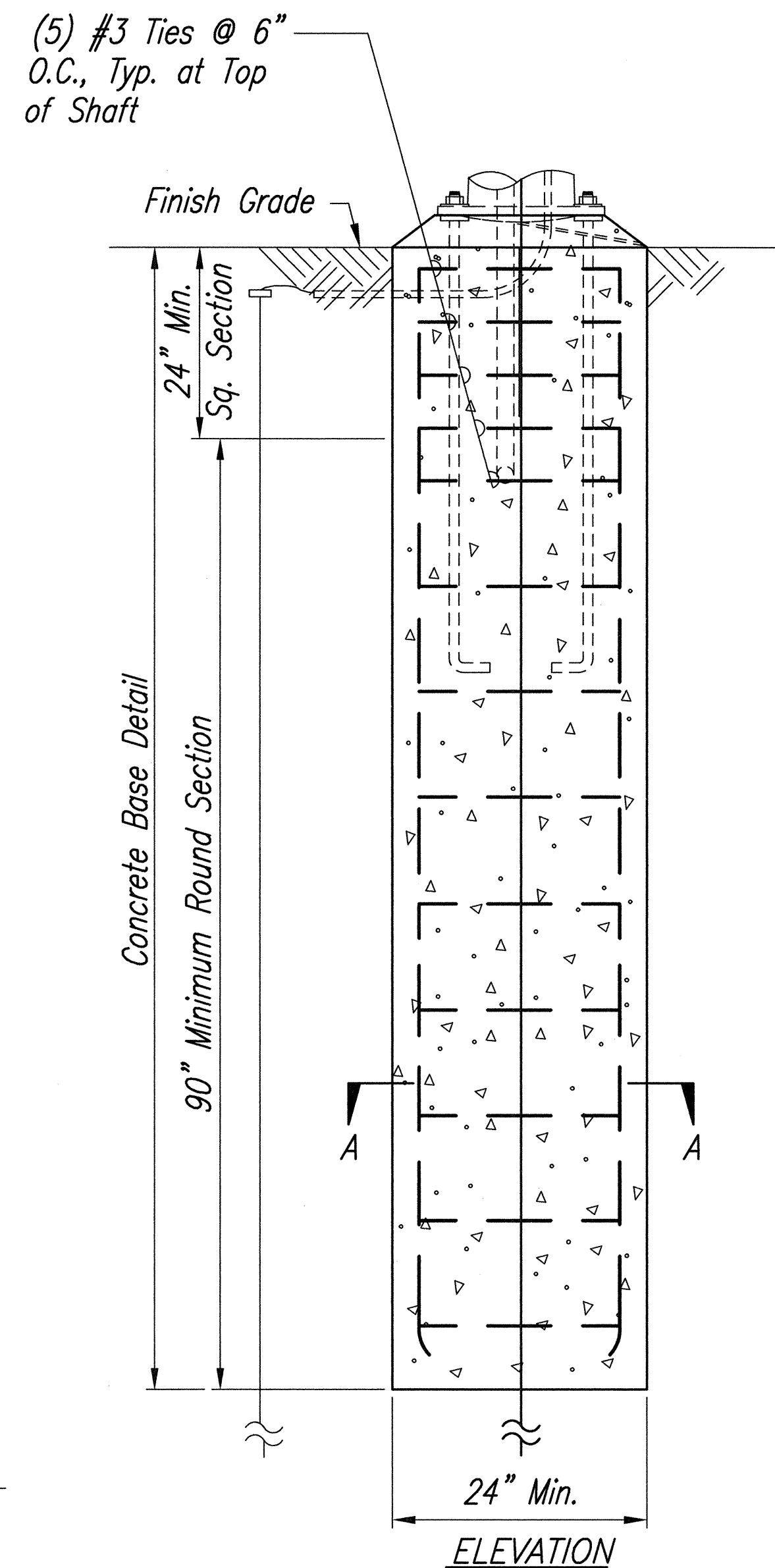


FED. ROAD DIST. NO.	STATE	PROJ. NO.	FISCAL YEAR	SHEET NO.	TOTAL SHEETS
HAWAII	HAW.	STP-076-1(5)	2000	70	83

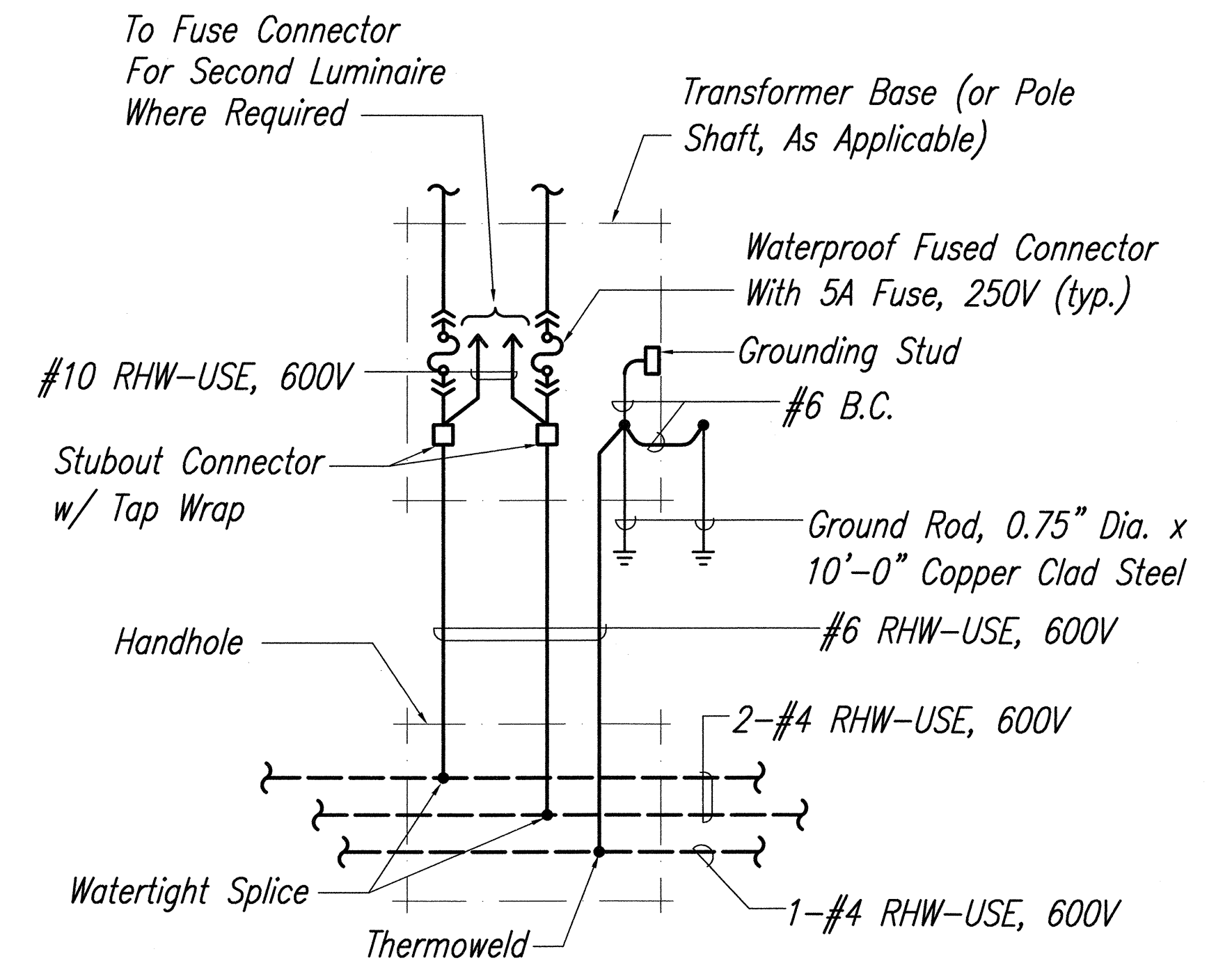


SINGLE ARM POLES

TYPICAL CONCRETE FOUNDATION AND TRANSFORMER BASE DETAIL  
NOT TO SCALE

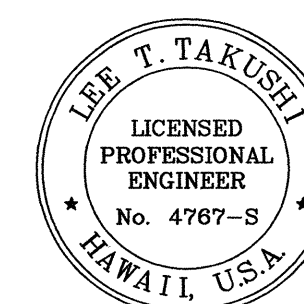


DOUBLE ARM POLES

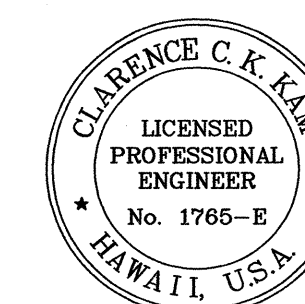


TYPICAL POLE WIRING CONNECTION DIAGRAM

ORIGINAL PLAN	DATE
SURVEY PLOTTED BY	
DESIGNED BY	
NOTED BY	
CHECKED BY	
QUANTITIES BY	
NO.	



THIS WORK WAS PREPARED BY ME OR UNDER MY SUPERVISION.



THIS WORK WAS PREPARED BY ME OR UNDER MY SUPERVISION.

STATE OF HAWAII  
DEPARTMENT OF TRANSPORTATION  
HIGHWAYS DIVISION  
**HIGHWAY LIGHTING DETAILS**

FORT WEAVER ROAD RESURFACING  
N. of Loulaunui St. to the Vicinity of Hanakahi St.  
F. A. Project No. STP-076-1(5)

Scale: None Date: July, 1999

SHEET No. 1 OF 1 SHEETS