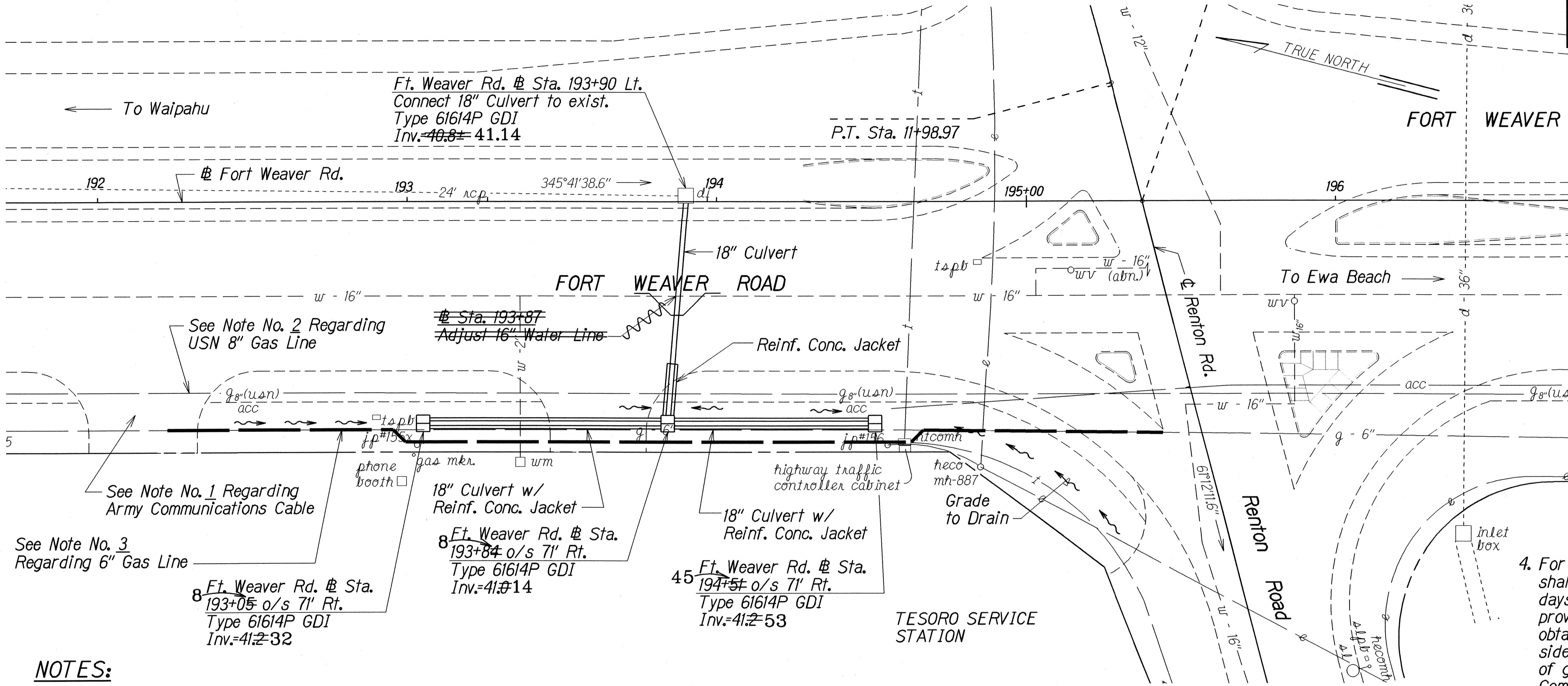


FED. ROAD DIST. NO.	STATE	PROJ. NO.	FISCAL YEAR	SHEET NO.	TOTAL SHEETS
HAWAII	HAW.	76A-01-98	2000	9	10



CONSTRUCTION NOTES FOR  
GAS FACILITIES

1. The Gas Company gas pipelines in the project area are plastic coated and cathodically protected. The Contractor shall be extremely careful when working near these gas pipelines.
2. Written clearances must be obtained from The Gas Company, Maps and Records Department, 515 Kamakee Street, at least (5) working days prior to starting excavation near these gas pipelines.
3. Since gas line locations on field maps are approximate, the Contractor, after obtaining written clearance, shall call USA North a minimum of two (2) working days before starting excavation to arrange for field location of the existing gas pipelines. The telephone number is 1-800-227-2600.
4. For relocation of any gas pipeline, the Contractor shall notify The Gas Company five (5) working days before starting work. The Contractor shall provide the necessary excavation and backfill, obtain traffic permits, and restore pavement, sidewalks, and other facilities. Any relocation of gas facilities shall be done by The Gas Company and paid for by the Contractor.

NOTES:

1. ACC Line is currently not in use but the Army requires that it be operational following construction. Approximate location is shown, depth is between 2'-0" and 4'-0" below grade, and the line may be concrete jacketed. Contact Bud Robinson of the Army's Directorate of Information Management for its requirements concerning the ACC (ph 438-8071, f 438-2804).
2. USN 8" gas line is abandoned. Approximate depth is 4'-0" below grade. Utilize appropriate spill containment and cold cutting procedures if the new construction necessitates its removal. This work shall be considered incidental to the costs for the various contract items. Contact Glen Engle of the Navy's Fleet Industrial Supply Center (ph.# 474-5073) for additional information regarding the Navy's gas line.
3. Gasco 6" line to be adjusted by the Gas Company. Approximate depth is 3'-0" below grade. The adjustment is estimated to take 5 working days. The Contractor shall trench and backfill for the gas line adjustment. The State will not be liable for any work delays by the contractor or the Gas Company. Contact person of The Gas Company is Mr. Dewey Kauka, District Supervisor (ph # 594-5548).
4. The Contractor shall restore pavement marking damaged or removed due to utility adjustment work in accordance with Section 629 - Pavement Markings. The cost for the accepted pavement markings shall be considered incidental to the bid price for the various contract items.

Ft. Weaver Rd. Sta. 192+95±  
to Sta. 194+72±  
6" gas line to be adjusted by others; trenching and backfilling of adjusted gas line by Contractor. See note 3.

~~Ft. Weaver Rd. Sta. 193+87±~~  
~~Adjust 16" Water Line~~  
~~30 L.F. 16" D.I. Pipe, CI 52~~  
~~6-16" 1/8 Bend~~  
~~2-16" Sleeve, 15" Long~~  
~~2 Conc. Btk. w/ Structural Struts (H)~~  
~~14 L.F. Reinf. Conc. Jkt.~~  
~~Temporary for Testing~~  
~~2-16" Cap w/ 4" CO~~  
~~2 Conc. Btk.~~  
~~For Profile, See Sheet No. 9~~

APPROVED:

CHIEF, PLANNING AND ENGINEERING DIVISION,  
BOARD OF WATER SUPPLY,  
CITY AND COUNTY OF HONOLULU

DATE

LEGEND FOR AS-BUILT POSTINGS	
~~~~~	Squiggly line for as-built deletion
==00.00==	Double line for as-built deletion
Roadway	Text for as-built posting

STATE OF HAWAII  
DEPARTMENT OF TRANSPORTATION  
HIGHWAYS DIVISION

**UTILITY PLAN**

**FORT WEAVER RD. DRAINAGE IMP.**  
**At Renton Road and**  
**Vicinity of Kahua Ranch Nursery**  
**Project No. 76A-01-98**

Scale: 1"=20'      Date: Feb. 1998

SHEET No. 1 OF 1 SHEETS