

FED. ROAD DIST. NO.	STATE	FED. AID PROJ. NO.	FISCAL YEAR	SHEET NO.	TOTAL SHEETS
HAWAII	HAW.	STP-076-1(3)	1993	22	34

**LEGEND FOR AS-BUILT POSTINGS**

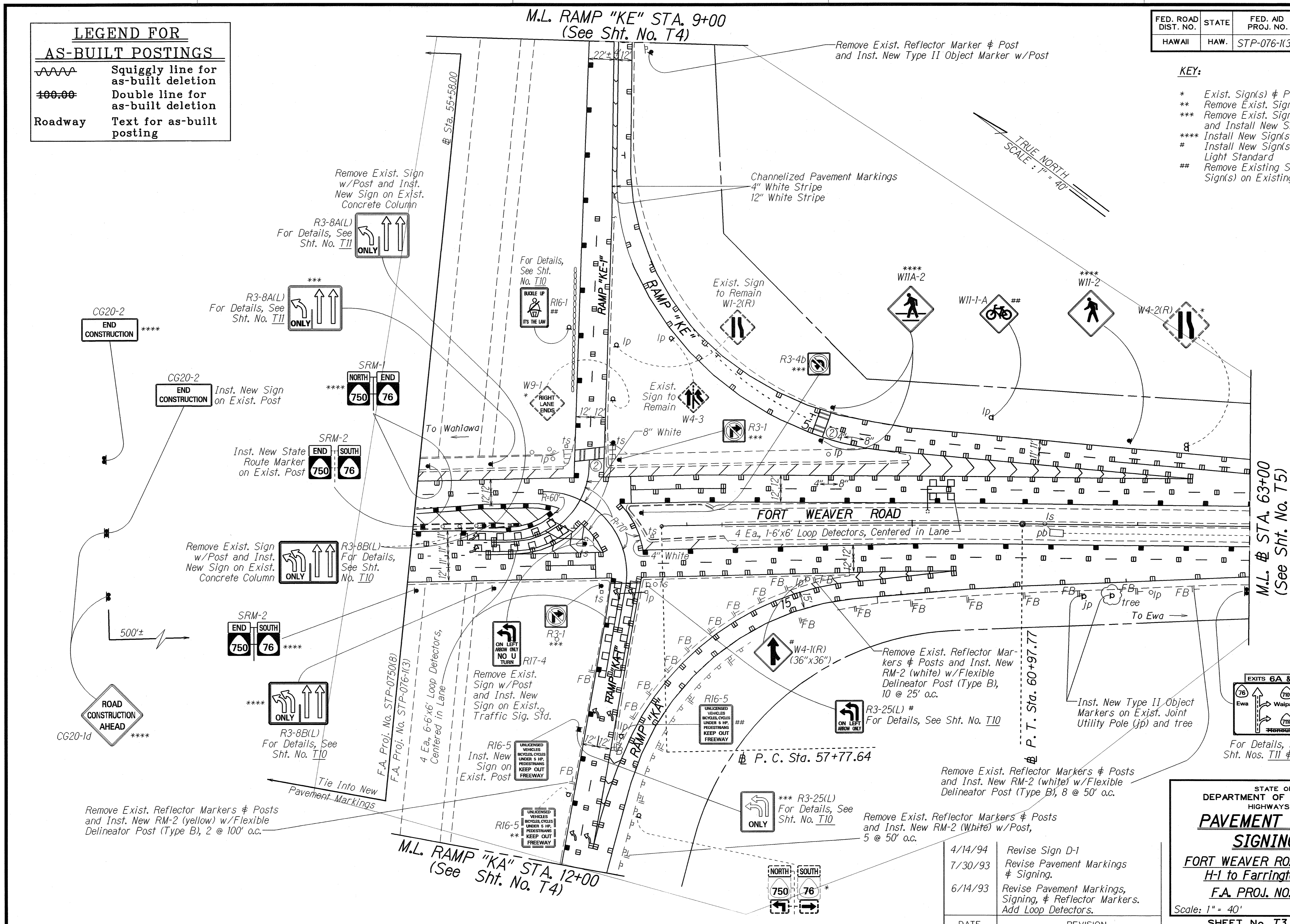
~~~~~ Squiggly line for as-built deletion

==00.00 Double line for as-built deletion

Roadway Text for as-built posting

**KEY:**

- \* Exist. Sign(s) & Post(s) to Remain
- \*\* Remove Exist. Sign(s) & Post(s)
- \*\*\* Remove Exist. Sign(s) & Post(s) and Install New Sign(s) w/Post(s)
- \*\*\*\* Install New Sign(s) w/Post(s)
- # Install New Sign(s) on Existing Light Standard
- ## Remove Existing Sign(s) and Install New Sign(s) on Existing Light Standard



|               |      |
|---------------|------|
| DESIGNED BY   | DATE |
| DRAWN BY      |      |
| TRACED BY     |      |
| QUANTITIES BY |      |
| CHECKED BY    |      |
| ORIGINAL PLAN |      |
| NOTE BOOK     |      |
| 21/11/93      |      |

| DATE    | REVISION                                                                    |
|---------|-----------------------------------------------------------------------------|
| 4/14/94 | Revise Sign D-1                                                             |
| 7/30/93 | Revise Pavement Markings & Signing.                                         |
| 6/14/93 | Revise Pavement Markings, Signing, & Reflector Markers. Add Loop Detectors. |

STATE OF HAWAII  
DEPARTMENT OF TRANSPORTATION  
HIGHWAYS DIVISION

**PAVEMENT MARKING & SIGNING PLAN**

**FORT WEAVER ROAD RESURFACING H-1 to Farrington Interchange**

F.A. PROJ. NO. STP-076-1(3)

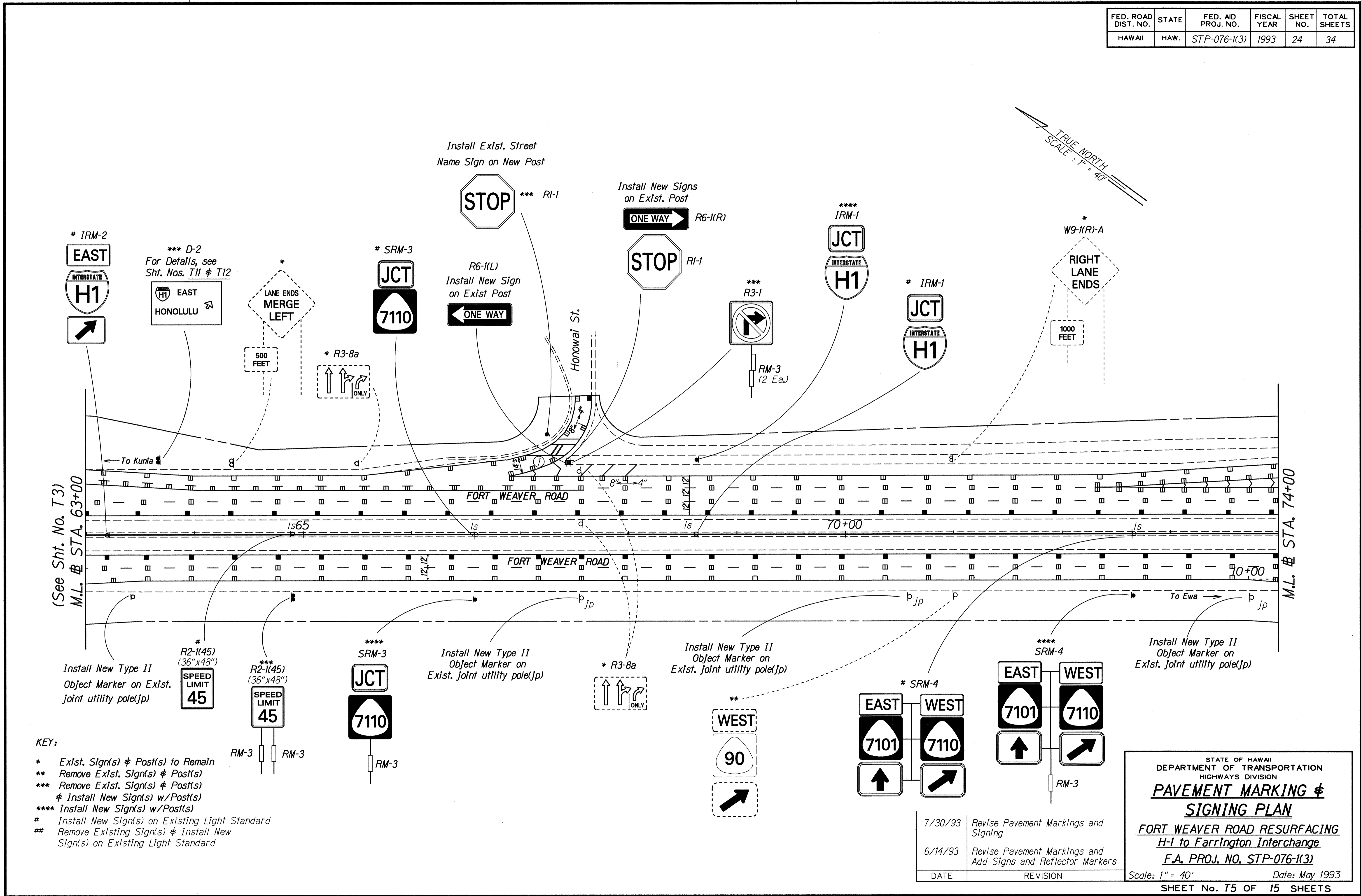
Scale: 1" = 40' Date: May 1993

SHEET No. T3 OF 15 SHEETS

AS-BUILT C.O. ADD.22



| FED. ROAD DIST. NO. | STATE | FED. AID PROJ. NO. | FISCAL YEAR | SHEET NO. | TOTAL SHEETS |
|---------------------|-------|--------------------|-------------|-----------|--------------|
| HAWAII              | HAW.  | STP-076-1(3)       | 1993        | 24        | 34           |



|                   |       |
|-------------------|-------|
| DATE              | ..... |
| SURVEY PLOTTED BY | ..... |
| PLAN              | ..... |
| DRAWN BY          | ..... |
| TRACED BY         | ..... |
| DESIGNED BY       | ..... |
| NOTE BOOK         | ..... |
| 001, 01000        | ..... |
| CHECKED BY        | ..... |
| No. 274003        | ..... |

- KEY:**
- \* Exist. Sign(s) & Post(s) to Remain
  - \*\* Remove Exist. Sign(s) & Post(s)
  - \*\*\* Remove Exist. Sign(s) & Post(s) & Install New Sign(s) w/Post(s)
  - \*\*\*\* Install New Sign(s) w/Post(s)
  - # Install New Sign(s) on Existing Light Standard
  - ## Remove Existing Sign(s) & Install New Sign(s) on Existing Light Standard

| DATE    | REVISION                                                     |
|---------|--------------------------------------------------------------|
| 7/30/93 | Revise Pavement Markings and Signing                         |
| 6/14/93 | Revise Pavement Markings and Add Signs and Reflector Markers |

STATE OF HAWAII  
DEPARTMENT OF TRANSPORTATION  
HIGHWAYS DIVISION

**PAVEMENT MARKING & SIGNING PLAN**

**FORT WEAVER ROAD RESURFACING & H-1 to Farrington Interchange**

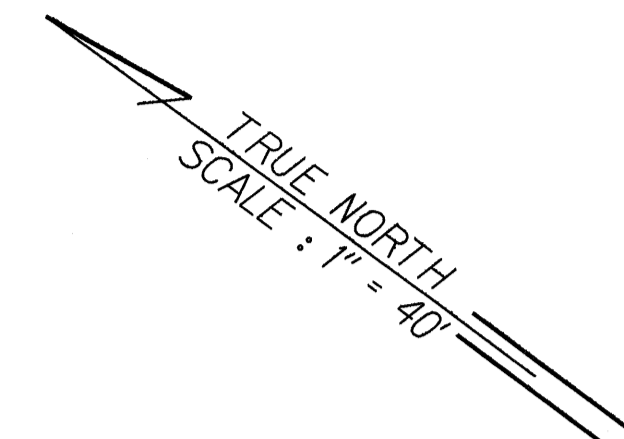
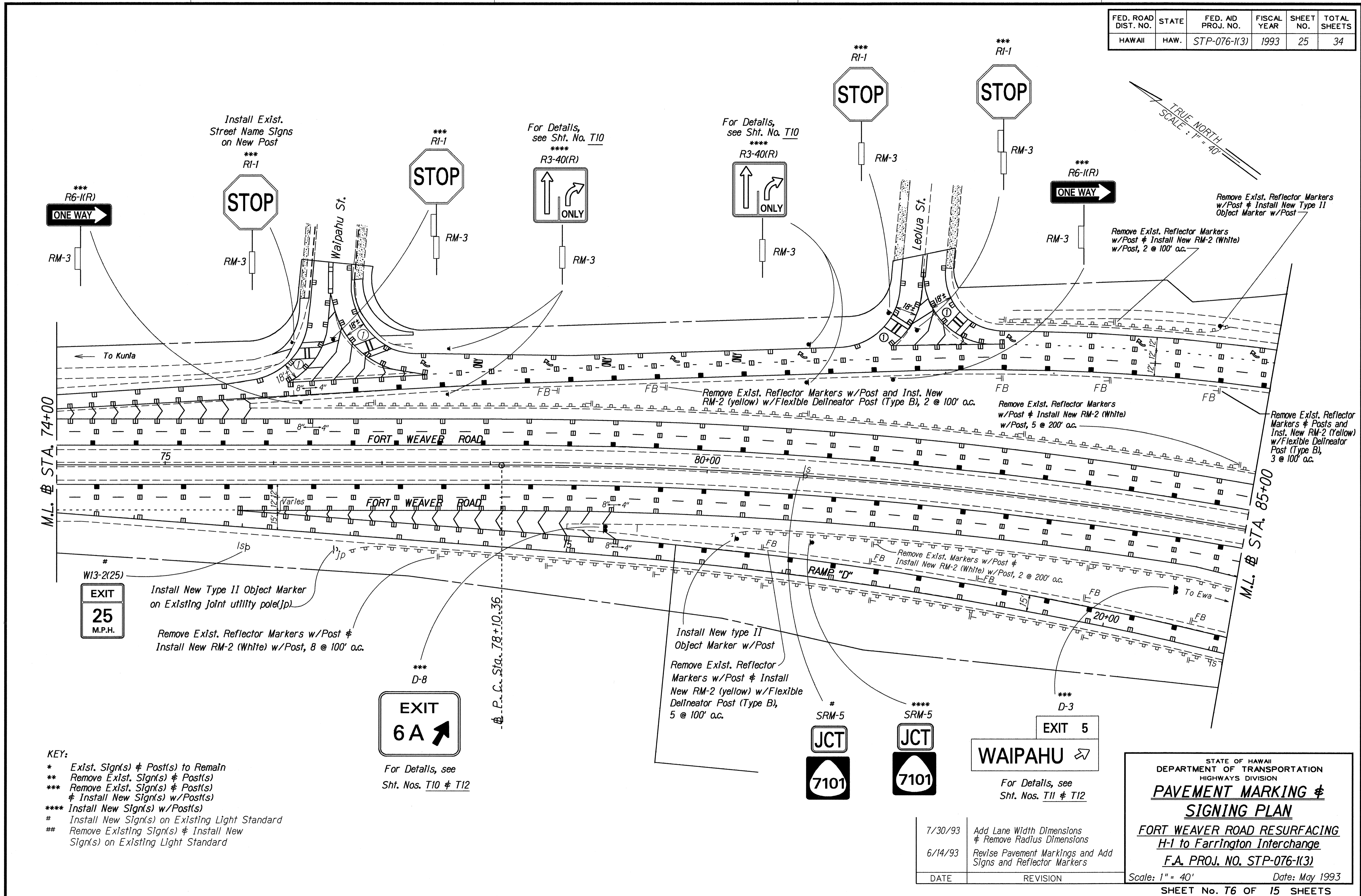
**F.A. PROJ. NO. STP-076-1(3)**

Scale: 1" = 40' Date: May 1993

SHEET No. 75 OF 15 SHEETS

**C.O. ADD.24**

| FED. ROAD DIST. NO. | STATE | FED. AID PROJ. NO. | FISCAL YEAR | SHEET NO. | TOTAL SHEETS |
|---------------------|-------|--------------------|-------------|-----------|--------------|
| HAWAII              | HAW.  | STP-076-1(3)       | 1993        | 25        | 34           |



- KEY:**
- \* Exist. Sign(s) & Post(s) to Remain
  - \*\* Remove Exist. Sign(s) & Post(s)
  - \*\*\* Remove Exist. Sign(s) & Post(s) & Install New Sign(s) w/Post(s)
  - \*\*\*\* Install New Sign(s) w/Post(s)
  - # Install New Sign(s) on Existing Light Standard
  - ## Remove Existing Sign(s) & Install New Sign(s) on Existing Light Standard

For Details, see Sht. Nos. T10 & T12

For Details, see Sht. Nos. T11 & T12

| DATE    | REVISION                                                     |
|---------|--------------------------------------------------------------|
| 7/30/93 | Add Lane Width Dimensions & Remove Radius Dimensions         |
| 6/14/93 | Revise Pavement Markings and Add Signs and Reflector Markers |

STATE OF HAWAII  
DEPARTMENT OF TRANSPORTATION  
HIGHWAYS DIVISION

**PAVEMENT MARKING & SIGNING PLAN**

**FORT WEAVER ROAD RESURFACING H-1 to Farrington Interchange**

**F.A. PROJ. NO. STP-076-1(3)**

Scale: 1" = 40' Date: May 1993

SHEET No. T6 OF 15 SHEETS

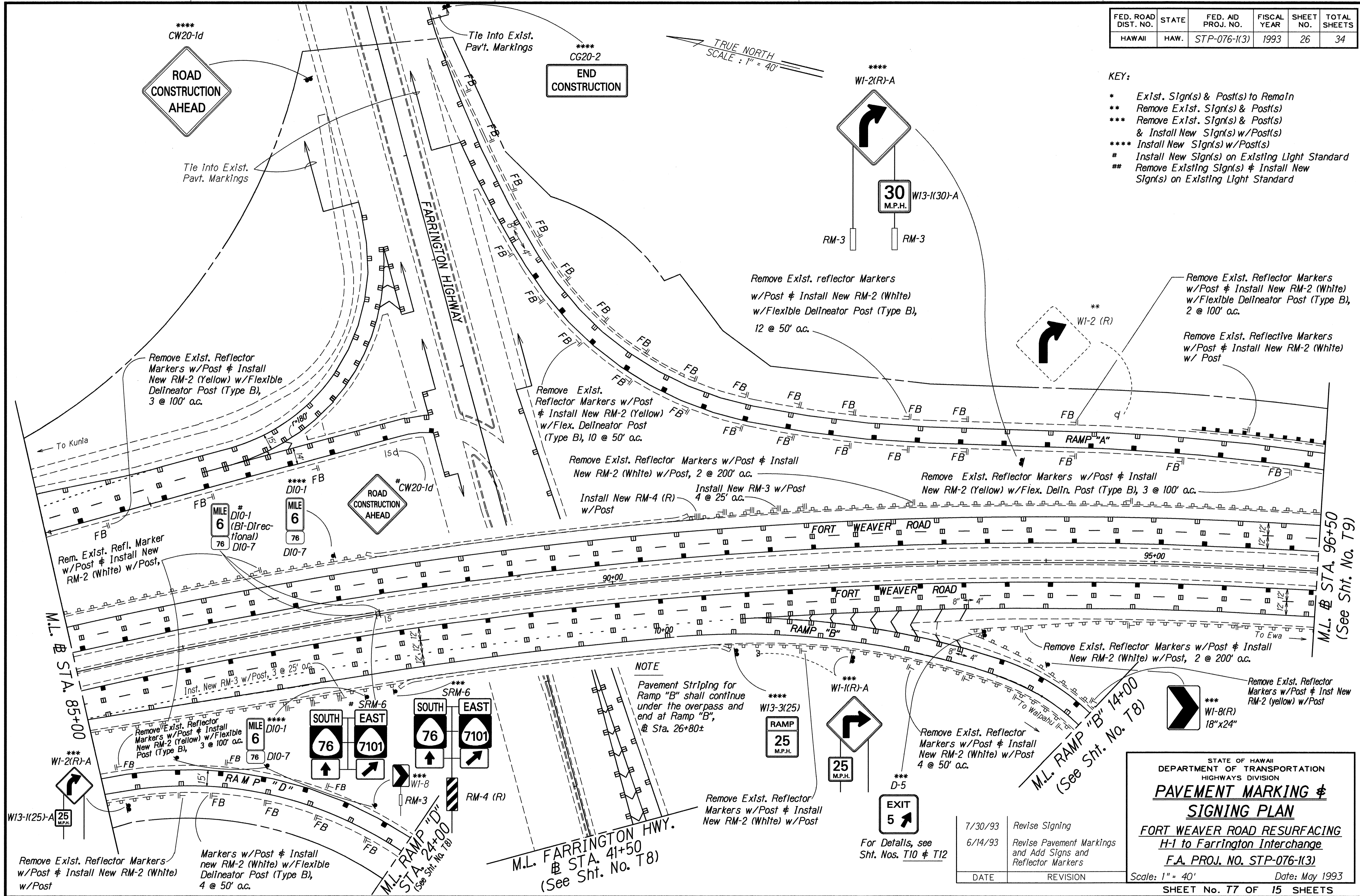
|                   |      |
|-------------------|------|
| SURVEY PLOTTED BY | DATE |
| DRAWN BY          |      |
| TRACED BY         |      |
| DESIGNED BY       |      |
| CHECKED BY        |      |
| NOTED BY          |      |
| DATE              |      |

**C.O. ADD.25**

| FED. ROAD DIST. NO. | STATE | FED. AID PROJ. NO. | FISCAL YEAR | SHEET NO. | TOTAL SHEETS |
|---------------------|-------|--------------------|-------------|-----------|--------------|
| HAWAII              | HAW.  | STP-076-1(3)       | 1993        | 26        | 34           |

**KEY:**

- \* Exst. Sign(s) & Post(s) to Remain
- \*\* Remove Exst. Sign(s) & Post(s)
- \*\*\* Remove Exst. Sign(s) & Post(s) & Install New Sign(s) w/Post(s)
- \*\*\*\* Install New Sign(s) w/Post(s)
- \* Install New Sign(s) on Existing Light Standard
- \*\* Remove Existing Sign(s) & Install New Sign(s) on Existing Light Standard



|                   |         |
|-------------------|---------|
| DATE              | 5/17/93 |
| SURVEY PLOTTED BY |         |
| DRAWN BY          |         |
| TRACED BY         |         |
| DESIGNED BY       |         |
| NOTED BY          |         |
| CHECKED BY        |         |

**NOTE**

Pavement Striping for Ramp "B" shall continue under the overpass and end at Ramp "B", @ Sta. 26+80±

| DATE    | REVISION                                                     |
|---------|--------------------------------------------------------------|
| 7/30/93 | Revise Signing                                               |
| 6/14/93 | Revise Pavement Markings and Add Signs and Reflector Markers |

STATE OF HAWAII  
DEPARTMENT OF TRANSPORTATION  
HIGHWAYS DIVISION

**PAVEMENT MARKING & SIGNING PLAN**

**FORT WEAVER ROAD RESURFACING  
H-1 to Farrington Interchange**

**F.A. PROJ. NO. STP-076-1(3)**

Scale: 1" = 40' Date: May 1993

SHEET NO. 26 OF 15 SHEETS

**C.O. ADD.26**

| FED. ROAD DIST. NO. | STATE | FED. AID PROJ. NO. | FISCAL YEAR | SHEET NO. | TOTAL SHEETS |
|---------------------|-------|--------------------|-------------|-----------|--------------|
| HAWAII              | HAW.  | STP-076-1(3)       | 1993        | 27        | 34           |

TRUE NORTH  
SCALE: 1" = 40'

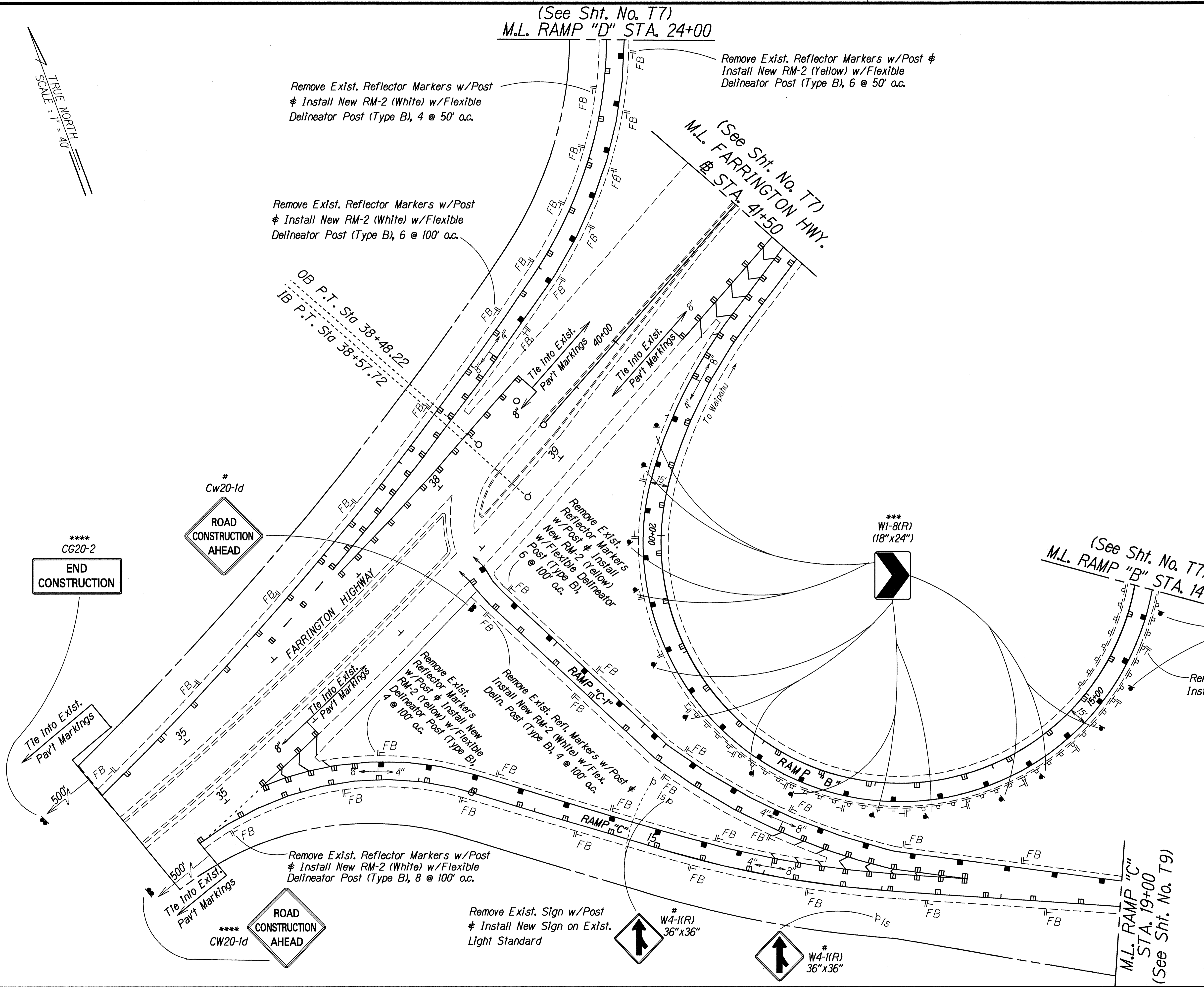
(See Sht. No. T7)  
M.L. RAMP "D" STA. 24+00

(See Sht. No. T7)  
M.L. FARRINGTON HWY.  
B STA. 41+50

(See Sht. No. T7)  
M.L. RAMP "B" STA. 14+00

M.L. RAMP "C"  
STA. 19+00  
(See Sht. No. T9)

- KEY:
- \* Exist. Sign(s) & Post(s) to Remain
  - \*\* Remove Exist. Sign(s) & Post(s)
  - \*\*\* Remove Exist. Sign(s) & Post(s) & Install New Sign(s) w/Post(s)
  - \*\*\*\* Install New Sign(s) w/Post(s)
  - # Install New Sign(s) on Exist. Light Standard
  - ## Remove Exist. Sign(s) & Install New Sign(s) on Exist. Light Standard



|             |         |
|-------------|---------|
| DESIGNED BY | DATE    |
| DRAWN BY    | 5/22/93 |
| CHECKED BY  |         |
| APPROVED BY |         |

| DATE    | REVISION                                                       |
|---------|----------------------------------------------------------------|
| 7/30/93 | Add Pavement Striping                                          |
| 6/14/93 | Revise Pavement Markings and Add Signing and Reflector Markers |

STATE OF HAWAII  
DEPARTMENT OF TRANSPORTATION  
HIGHWAYS DIVISION

**PAVEMENT MARKING & SIGNING PLAN**

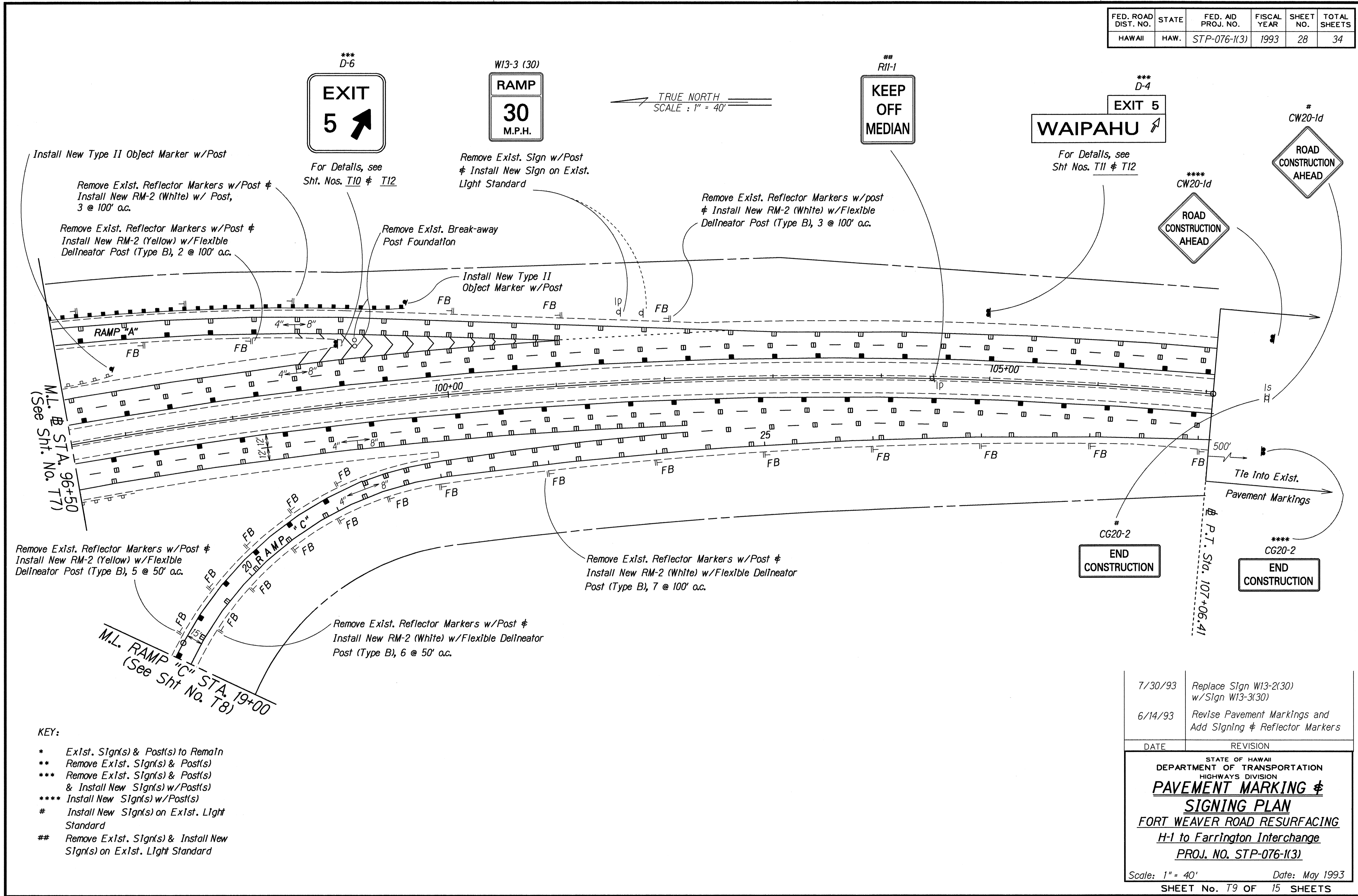
FORT WEAVER ROAD RESURFACING  
H-1 to Farrington Interchange  
PROJ. NO. STP-076-1(3)

Scale: 1" = 40' Date: May 1993

SHEET No. T8 OF 15 SHEETS

C.O. ADD.27

| FED. ROAD DIST. NO. | STATE | FED. AID PROJ. NO. | FISCAL YEAR | SHEET NO. | TOTAL SHEETS |
|---------------------|-------|--------------------|-------------|-----------|--------------|
| HAWAII              | HAW.  | STP-076-1(3)       | 1993        | 28        | 34           |



\*\*\*  
D-6  
**EXIT 5**

W13-3 (30)  
**RAMP 30 M.P.H.**

\*\*  
R11-1  
**KEEP OFF MEDIAN**

\*\*\*  
D-4  
**EXIT 5 WAIPAHU**

#  
CW20-1d  
**ROAD CONSTRUCTION AHEAD**

\*\*\*\*  
CW20-1d  
**ROAD CONSTRUCTION AHEAD**

#  
CG20-2  
**END CONSTRUCTION**

\*\*\*\*  
CG20-2  
**END CONSTRUCTION**

Install New Type II Object Marker w/Post

Remove Exst. Reflector Markers w/Post & Install New RM-2 (White) w/ Post, 3 @ 100' o.c.

Remove Exst. Reflector Markers w/Post & Install New RM-2 (Yellow) w/Flexible Delineator Post (Type B), 2 @ 100' o.c.

For Details, see Sht. Nos. T10 & T12

Remove Exst. Sign w/Post & Install New Sign on Exst. Light Standard

Remove Exst. Break-away Post Foundation

Install New Type II Object Marker w/Post

Remove Exst. Reflector Markers w/post & Install New RM-2 (White) w/Flexible Delineator Post (Type B), 3 @ 100' o.c.

Remove Exst. Reflector Markers w/Post & Install New RM-2 (Yellow) w/Flexible Delineator Post (Type B), 5 @ 50' o.c.

Remove Exst. Reflector Markers w/Post & Install New RM-2 (White) w/Flexible Delineator Post (Type B), 7 @ 100' o.c.

Remove Exst. Reflector Markers w/Post & Install New RM-2 (White) w/Flexible Delineator Post (Type B), 6 @ 50' o.c.

**KEY:**

- \* Exst. Sign(s) & Post(s) to Remain
- \*\* Remove Exst. Sign(s) & Post(s)
- \*\*\* Remove Exst. Sign(s) & Post(s) & Install New Sign(s) w/Post(s)
- \*\*\*\* Install New Sign(s) w/Post(s)
- # Install New Sign(s) on Exst. Light Standard
- \*\* Remove Exst. Sign(s) & Install New Sign(s) on Exst. Light Standard

|                   |           |
|-------------------|-----------|
| DATE              | 5/22/93   |
| SURVEY PLOTTED BY |           |
| DRAWN BY          |           |
| TRACED BY         |           |
| DESIGNED BY       | Joe/10/93 |
| CHECKED BY        |           |
| ORIGINAL PLAN     |           |
| NOTE BOOK         |           |
| NO.               | 12        |

|         |                                                              |
|---------|--------------------------------------------------------------|
| 7/30/93 | Replace Sign W13-2(30) w/Sign W13-3(30)                      |
| 6/14/93 | Revise Pavement Markings and Add Signing & Reflector Markers |

|                                                                                                                                                                                                               |                |
|---------------------------------------------------------------------------------------------------------------------------------------------------------------------------------------------------------------|----------------|
| DATE                                                                                                                                                                                                          | REVISION       |
| STATE OF HAWAII<br>DEPARTMENT OF TRANSPORTATION<br>HIGHWAYS DIVISION<br><b>PAVEMENT MARKING &amp; SIGNING PLAN</b><br>FORT WEAVER ROAD RESURFACING<br>H-1 to Farrington Interchange<br>PROJ. NO. STP-076-1(3) |                |
| Scale: 1" = 40'                                                                                                                                                                                               | Date: May 1993 |
| SHEET No. T9 OF 15 SHEETS                                                                                                                                                                                     |                |

**C.O. ADD.28**