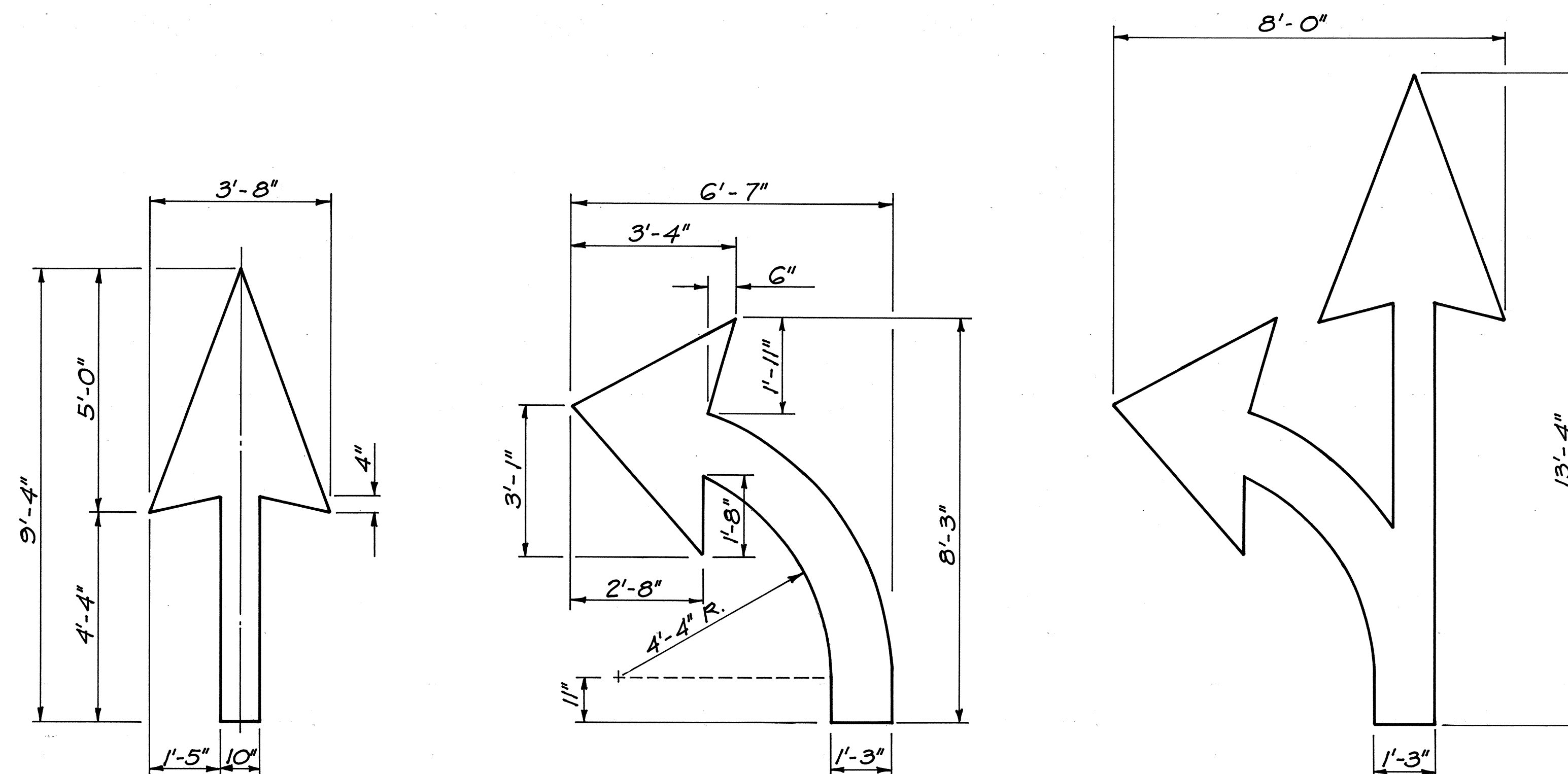


ROAD DIST. NO.	STATE	PROJ. NO.	FISCAL YEAR	SHEET NO.	TOTAL SHEETS
HAWAII	HAW.	760A-01-75	1976	6	13

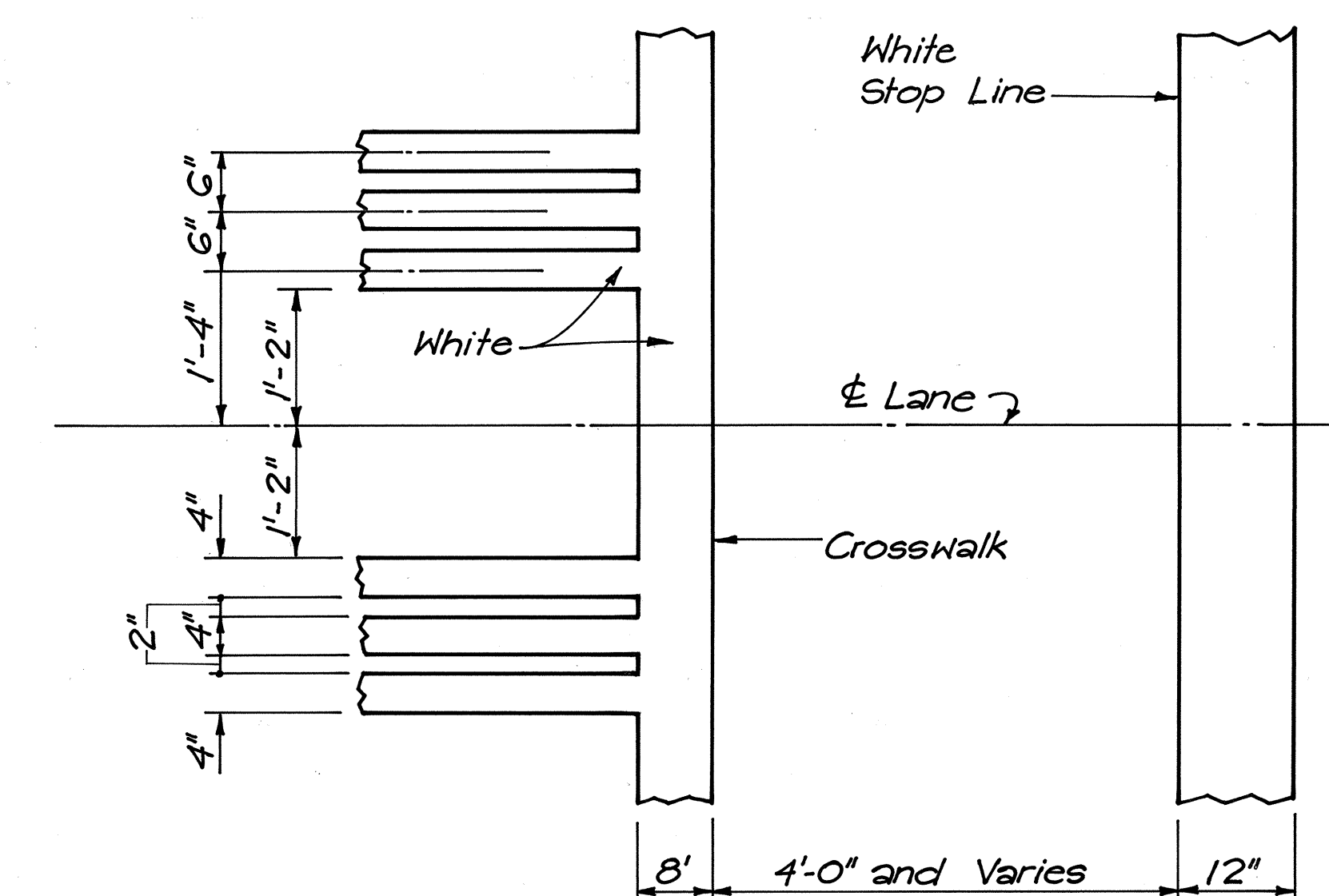
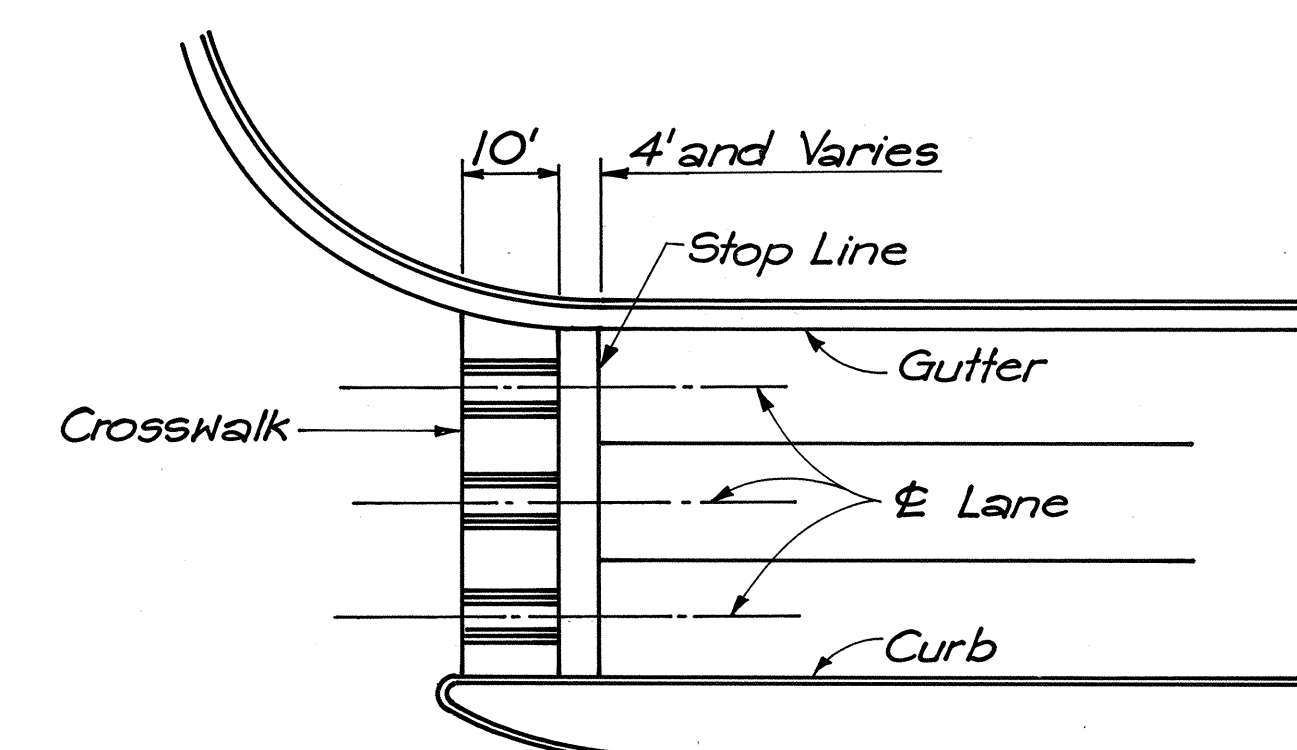


### PAVEMENT ARROWS

Scale :  $\frac{1}{2}'' = 1'-0''$

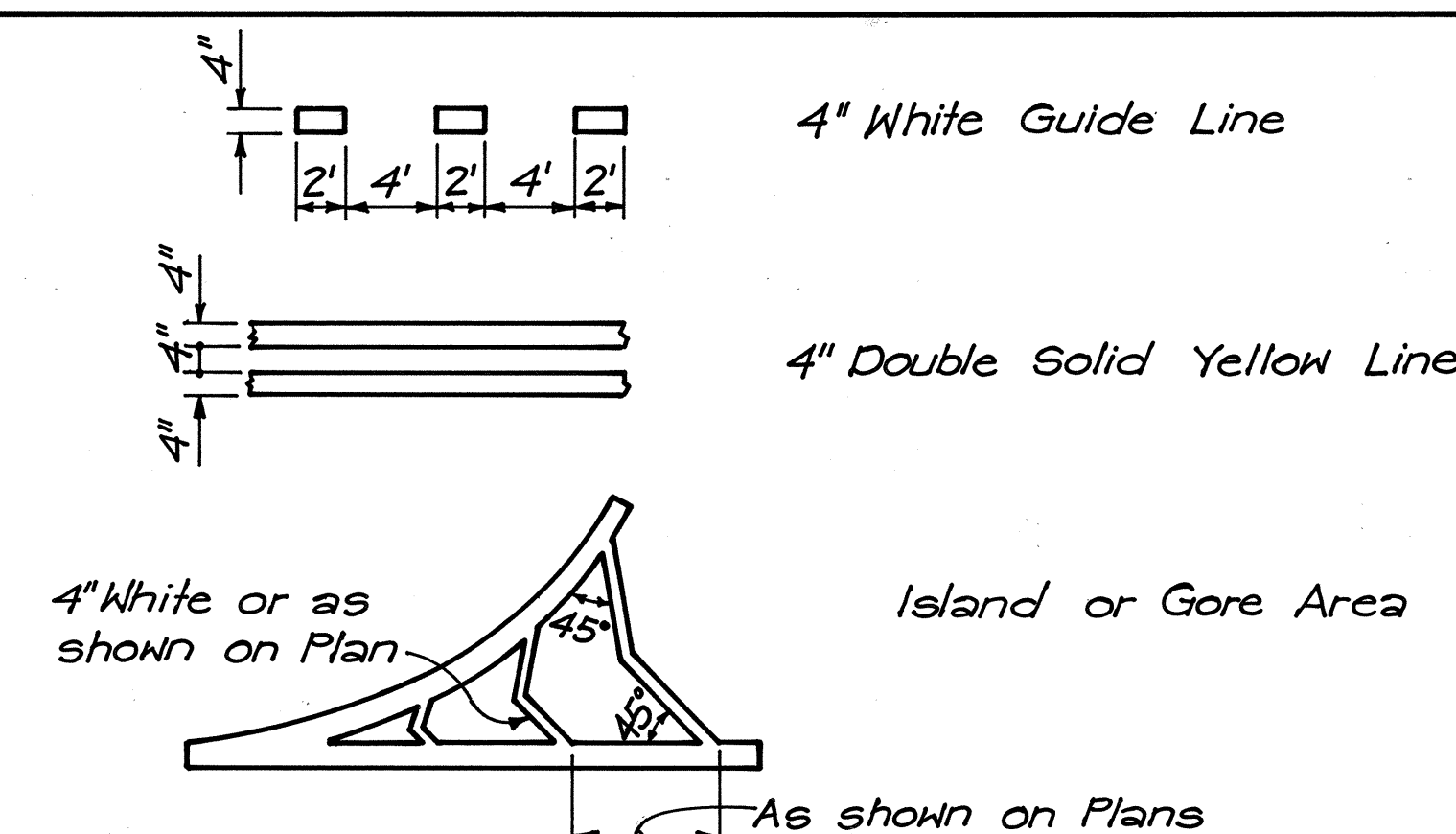
### GENERAL NOTES : PAVEMENT MARKING

1. Pavement Markings shall conform to the "Manual on Uniform Traffic Control Devices for Streets and Highways", 1971, and as shown on the Plans.
2. Pavement Markings shall be done by the Contractor. Exact Locations to be determined by the Engineer.
3. Existing Pavement Markings not compatible with the Traffic Pattern shall be removed as directed by the Engineer. All costs shall be incidental to the Contract Item "Pavement Striping".



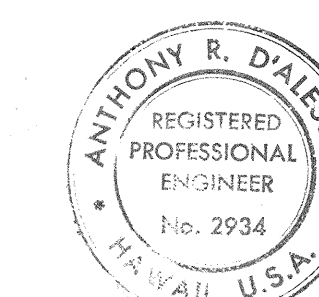
### CROSSWALK AND STOP LINE DETAIL

Not to Scale



### MISCELLANEOUS STRIPES

Not to Scale



THIS WORK WAS PREPARED BY ME OR UNDER MY SUPERVISION.

*A.R. Dalessio*

STATE OF HAWAII  
DEPARTMENT OF TRANSPORTATION  
HIGHWAYS DIVISION

### PAVEMENT MARKING DETAILS

FORT WEAVER ROAD  
TEMPORARY TRAFFIC SIGNALS AT RENTON RD.  
PROJECT NO. 760A-01-75

SCALE: As shown DATE: Oct. 15, 1976

SHEET No. 1 OF 1 SHEETS