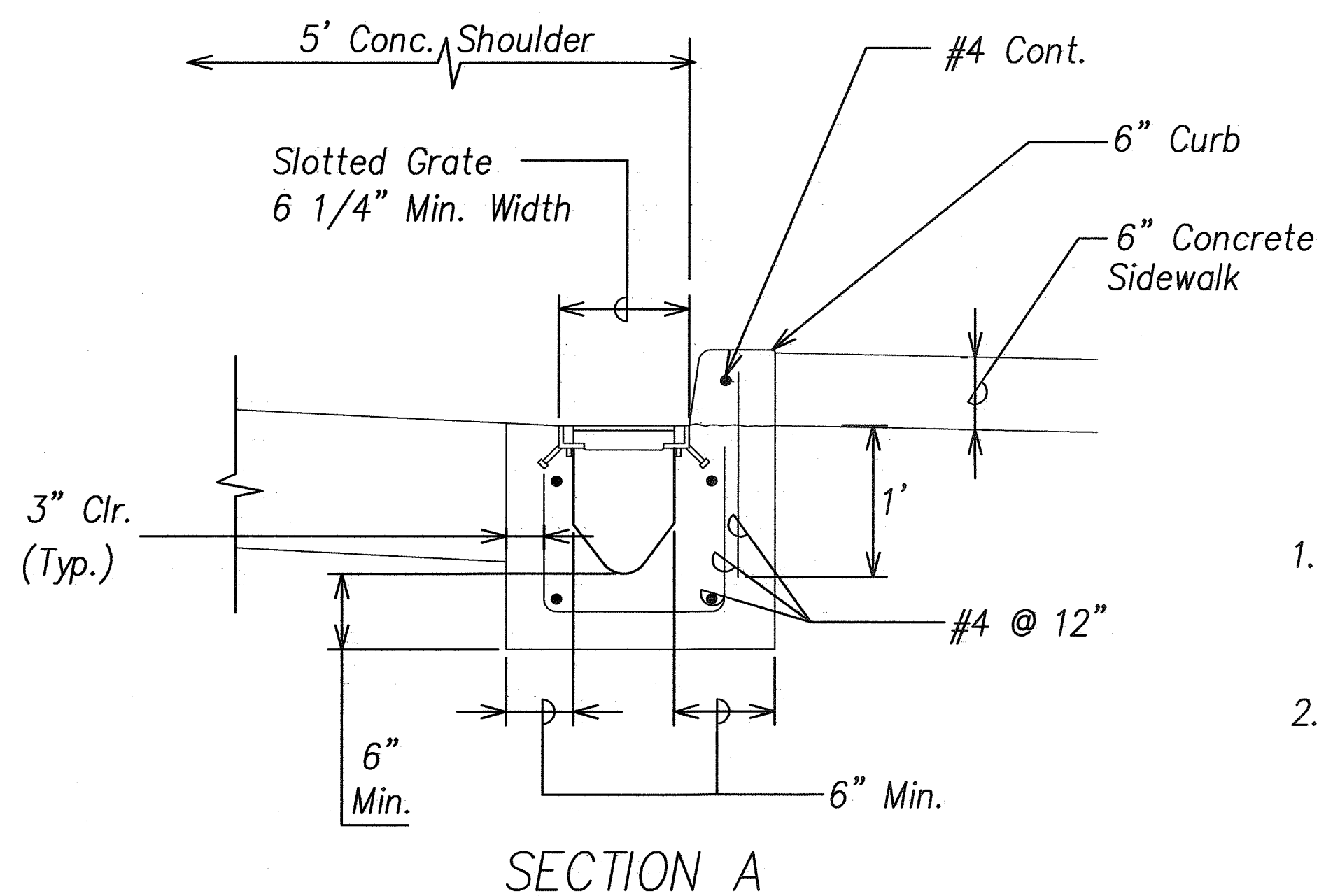
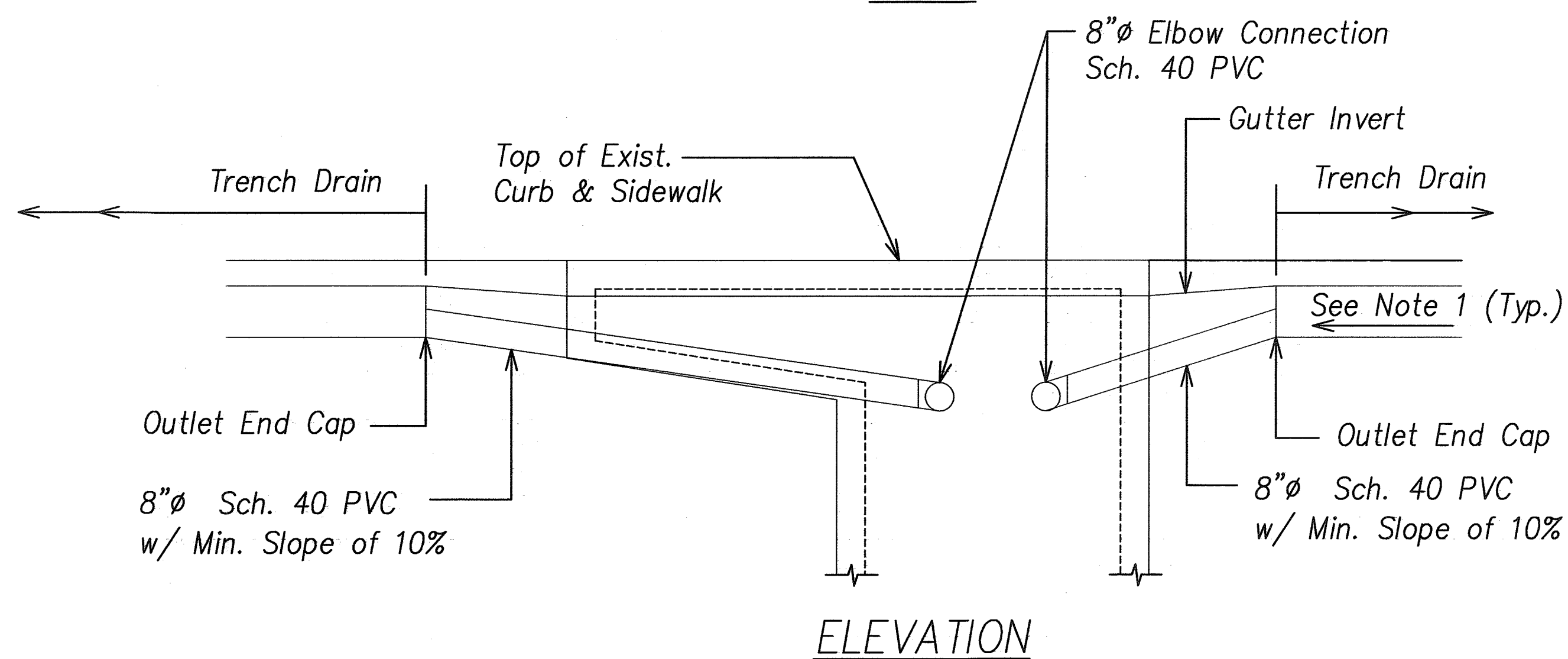
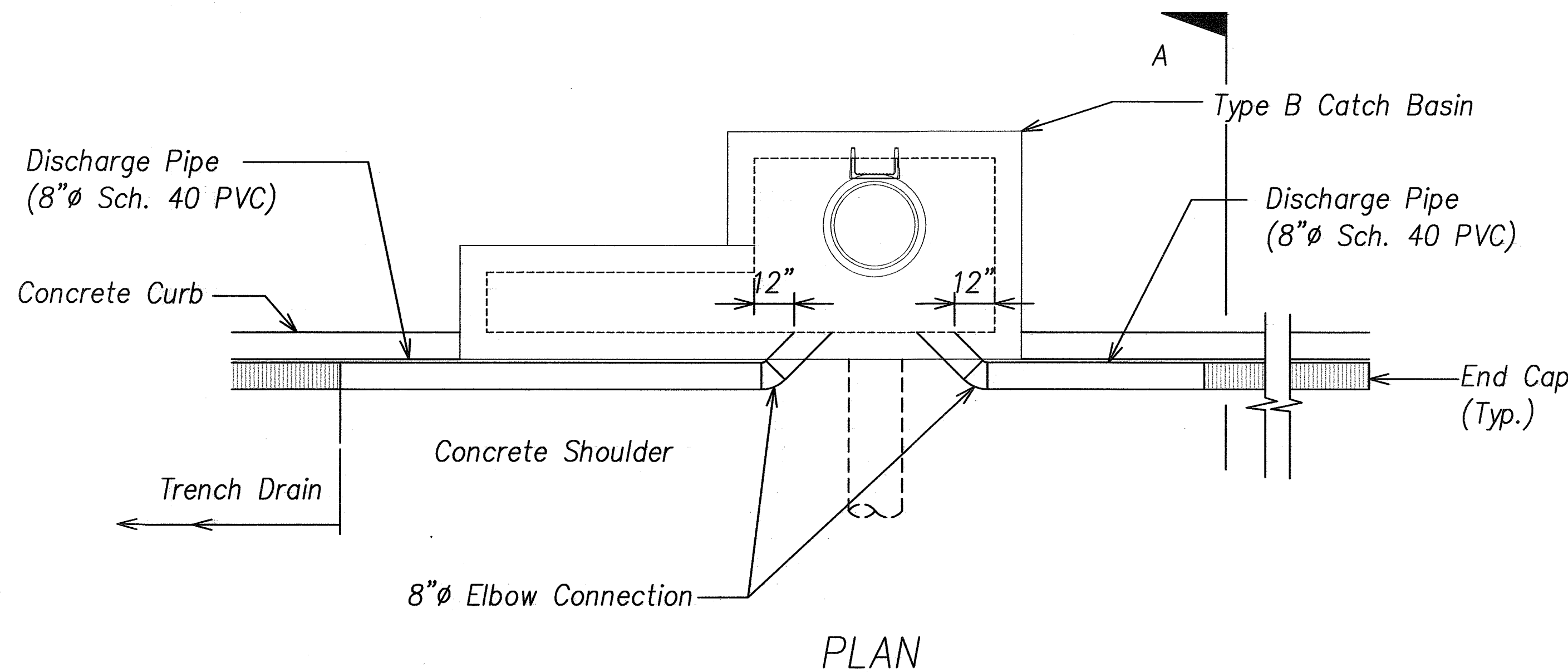
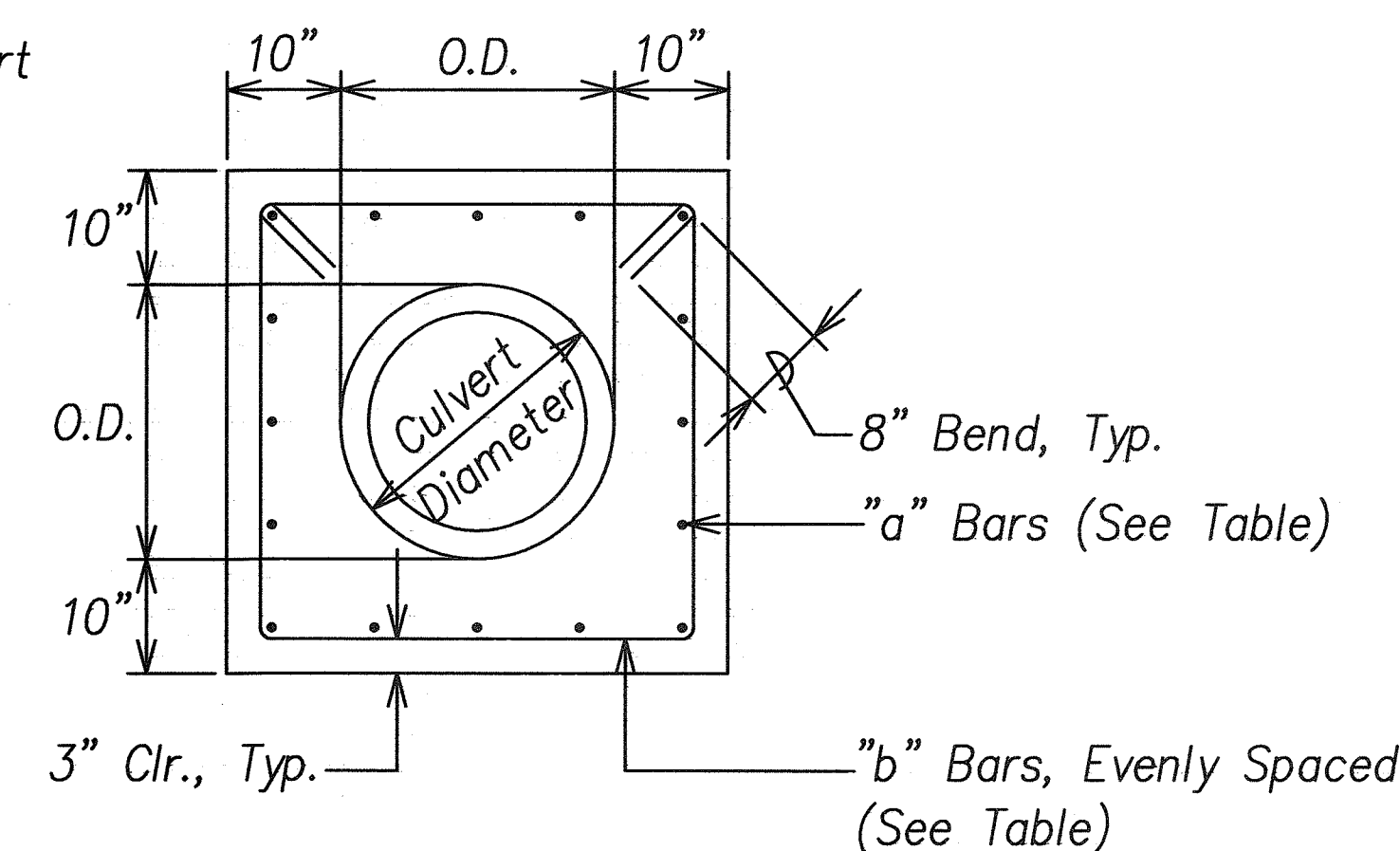
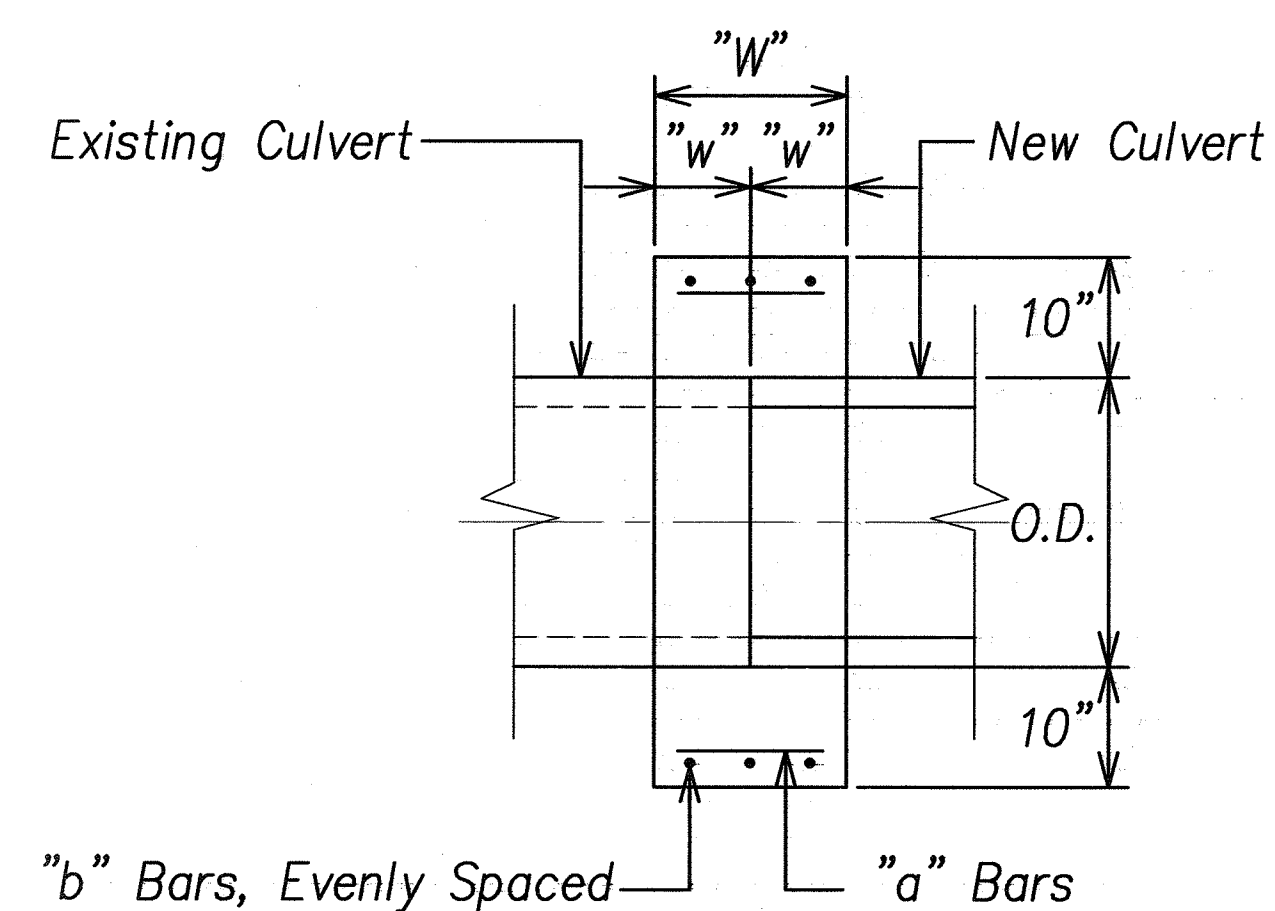
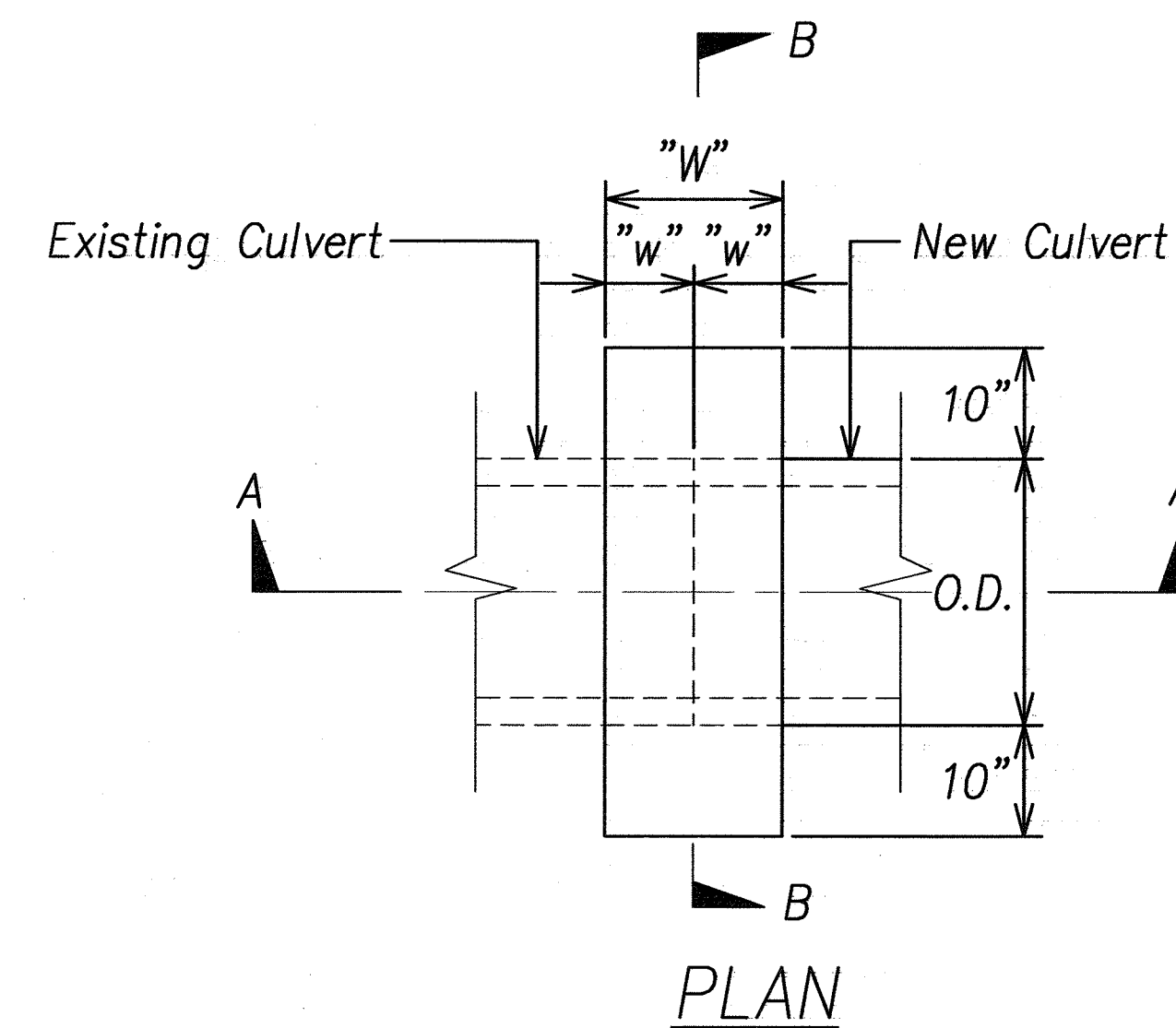


FED. ROAD DIST. NO.	STATE	FED. AID PROJ. NO.	FISCAL YEAR	SHEET NO.	TOTAL SHEETS
HAWAII	HAW.	NH-072-1(52)	2008	18	64



TRENCH DRAIN CONNECTION TO CATCH BASIN
Not to Scale

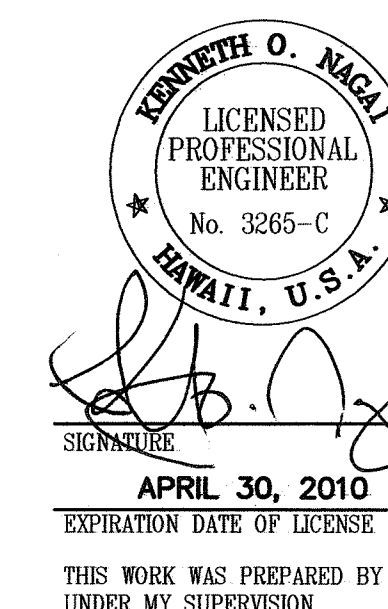


REINFORCED CONCRETE COLLAR

Scale: 3/4" = 1'-0"

NOTES:

1. Trench drains shall have a minimum internal slope of 0.6%, or as specified by the manufacturer.
2. Slotted grate shall be ductile iron suitable for auto, light truck, or van traffic and capable of supporting a HS-20 Loading. Grates shall also be ADA compliant and resistant to bicycle tires.



STATE OF HAWAII
DEPARTMENT OF TRANSPORTATION
HIGHWAYS DIVISION

MISCELLANEOUS DETAILS

KALANIANA'OLE HIGHWAY IMPROVEMENTS
VICINITY OF HAWAII KAI DRIVE
TO KEAHOLE STREET
FEDERAL-AID PROJECT NO. NH-072-1(52)
SCALE: As Noted DATE: November 2008

SHEET No. C-13 OF 22 SHEETS

SURVEY PLOTTED BY	DATE
DESIGNED BY	
TRACED BY	
DESIGNED BY	
QUANTITIES BY	
CHECKED BY	
ORIGINAL PLAN	
NOTE BOOK	
No.	