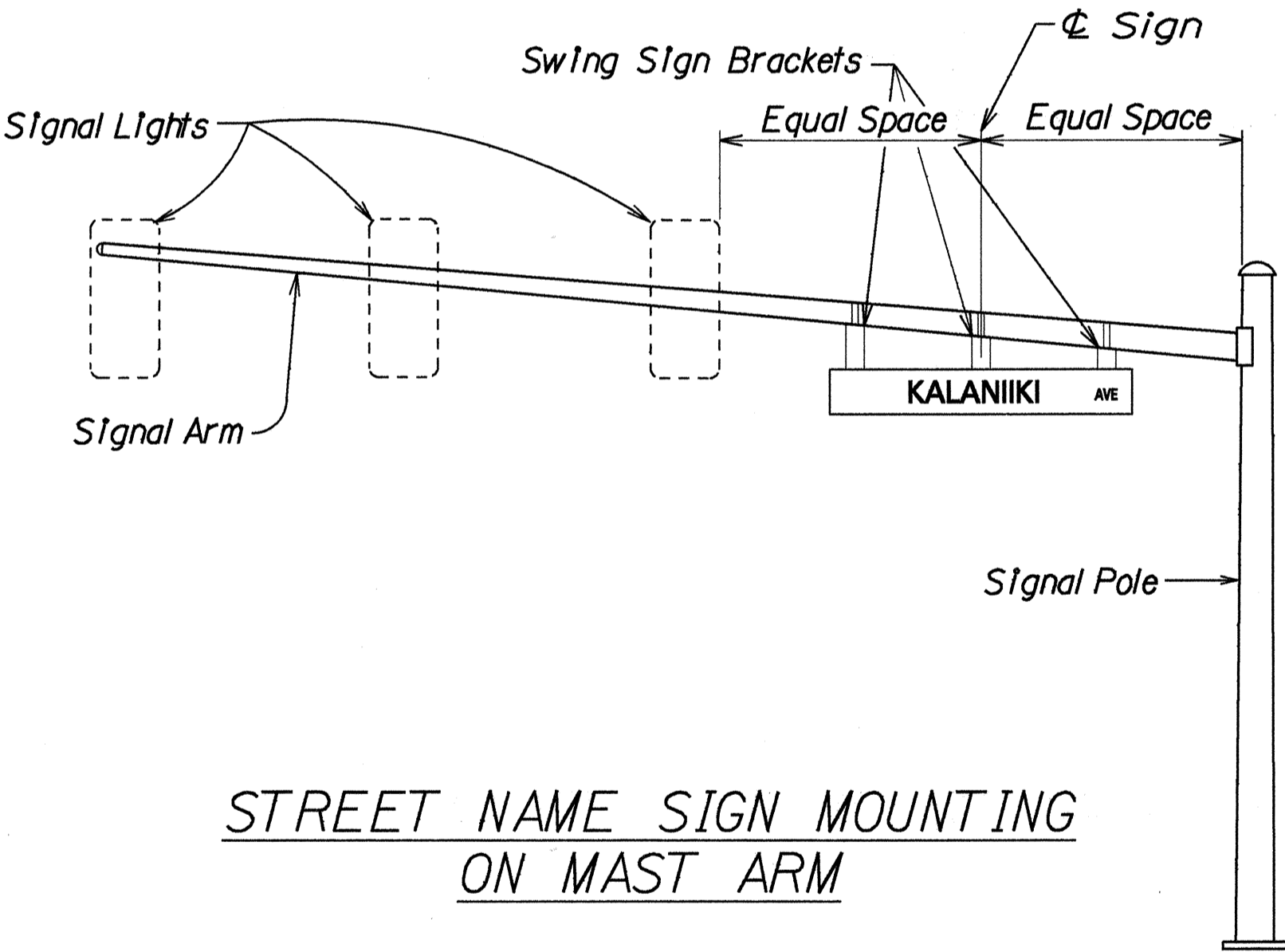


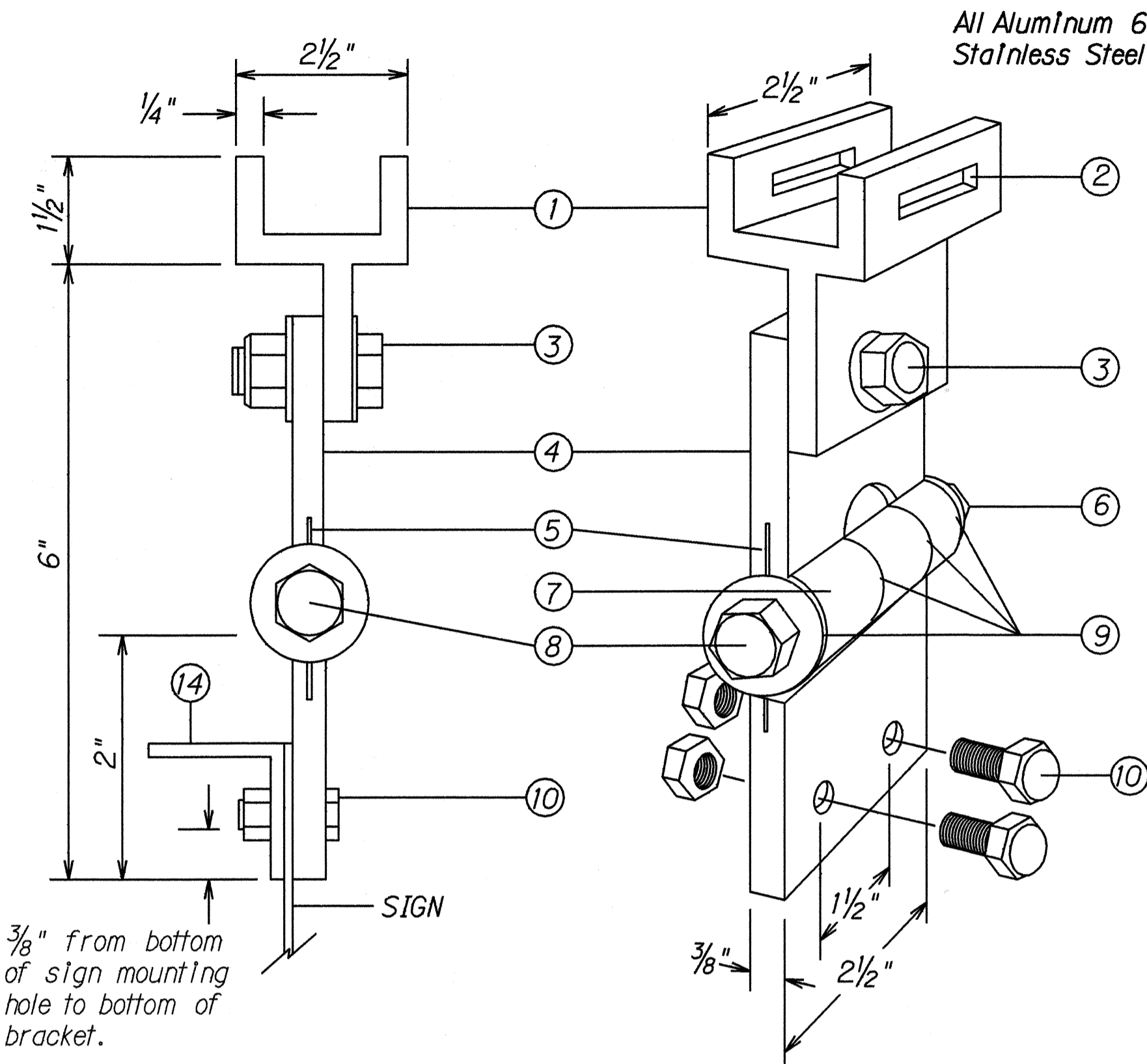
FED. ROAD DIST. NO.	STATE	FED. AID PROJ. NO.	FISCAL YEAR	SHEET NO.	TOTAL SHEETS
HAWAII	HAW.	NH-072-1(47)	2000	60	91

NOTES:

- Signs S-1 thru S-6 shall be a new Street Name Sign. The Contractor shall provide the same message on the front and back side of the sign. Payment will not be made separately but shall be considered as one unit.
- Colors:  
Legend - White (Reflectorized)  
Background - Green (Reflectorized)
- All panels shall be reflectorized with Type III or IV retroreflective sheeting in accordance with Section 712.20 of the Standard Specifications.
- All signs shall conform to section 621 of the Standard Specifications and the latest editions and amendments of the following FHWA publications:  
a. "Manual on Uniform Traffic Control Devices for Streets and Highways" (MUTCD)  
b. "Standard Highway Signs"  
c. "Standard Alphabets for Highway Signs"
- Borders and messages shall conform to details as shown on the plans and as specified in the MUTCD.
- Sign mounting brackets, aluminum angle, fixtures, fasteners, and all necessary hardware, and equipment, tools, labor, materials and other incidentals for installation, will not be paid for separately but shall be considered incidental to street name sign installation.
- All panels 7'-0" or less in length shall be installed with three (3) sign mounting brackets. Signs longer than 7'-0" shall have four (4) sign mounting brackets.
- Diacritical Marks are not authorized.



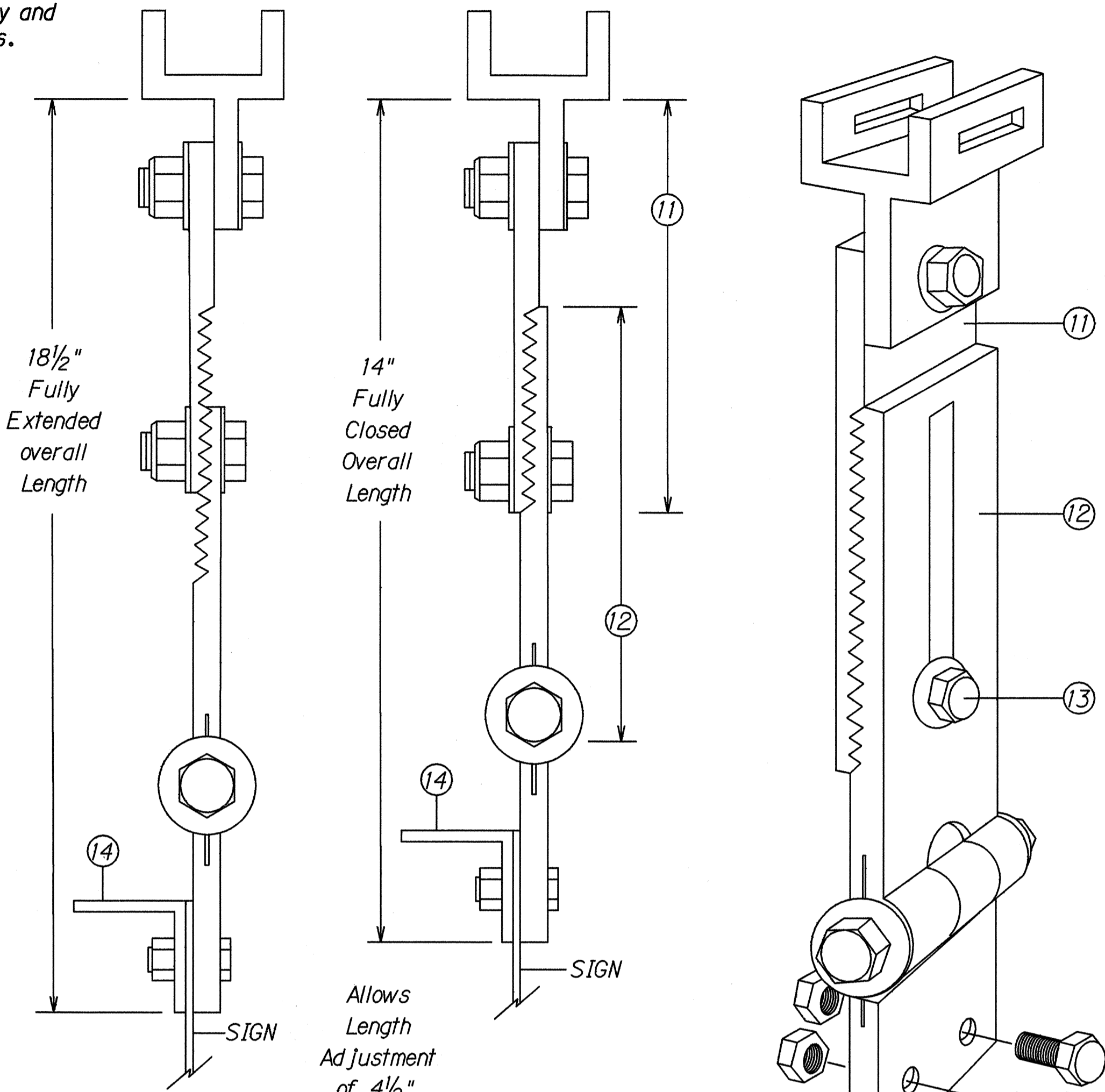
STREET NAME SIGN MOUNTING ON MAST ARM



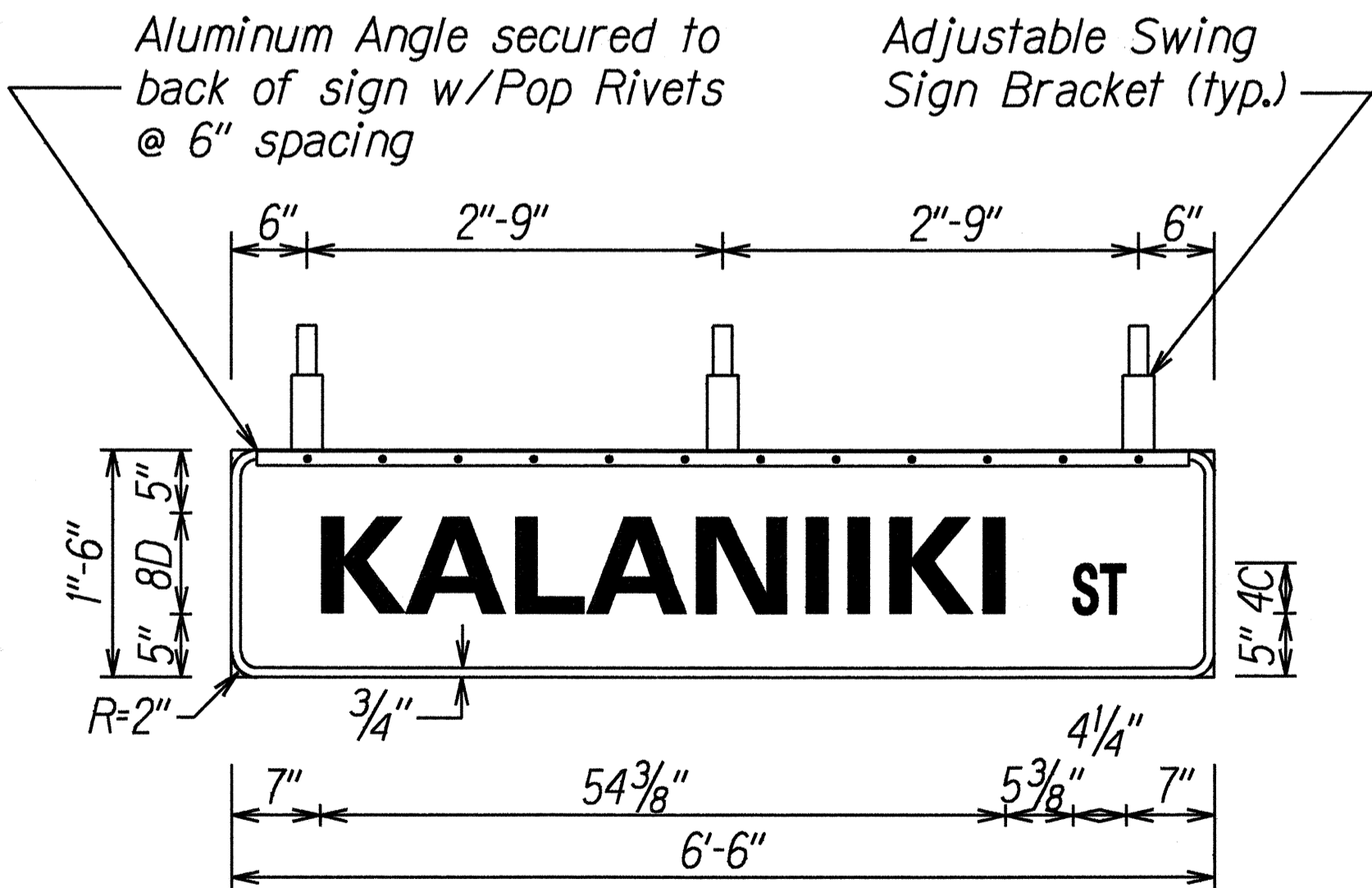
FIXED LENGTH NON-ADJUSTABLE SWING SIGN BRACKET

- Pivotal Upper Bracket
- 1 5/8" x 1/4" Slot for double strapping to electroliner mast arm. (M2G-34S(HD) .030" x 3/4" Heavy Duty Stainless Steel Strap with M2G-34B(HD) Buckle recommended.)
- 1/2" - 13 x 1 1/2" Stainless Steel Hex Head Bolt with Stainless Steel Hex Lock Nut and 1/16" Stainless Steel Washer (both sides). Allows upper bracket to pivot and align with electroliner mast arm.
- 6" Overall drop with Fixed Length Sign Bracket
- Stainless Steel Dampener Spring (Removable)
- Stainless Steel Hex Lock Nut with 1/16" Stainless Steel Washer
- 1" O.D. Axle Housing
- 1/2" - 13 x 4" Stainless Steel Hex Head Bolt with 1/16" Stainless Steel Washer
- Oilite Bushing
- Sign Mounting Sets, consisting of two each 5/16" - 18 x 1" Stainless Steel Hex Head Bolt with Stainless Steel Hex Lock Nut. Two holes on 1 1/2" centers provide positive lock sign mounting to bracket.
- 8 1/4" overall length Upper Adjustable Sign Bracket section
- 9" overall length Lower Adjustable Sign Bracket section, including Axle Housing (8" overall length to top of Axle Housing)
- 1/2" - 13 x 1 1/2" Stainless Steel Hex Bolt with Stainless Steel Hex Lock Nut and 1/16" Stainless Steel Washers (both sides). Loosen lock nut, adjust bracket teeth to level sign.
- 1 1/4" x 1 1/4" x 1/8" Aluminum Angle

Note: Dimensions may vary slightly.



ADJUSTABLE LENGTH SWING SIGN BRACKET



TYPICAL PANEL & SWING BRACKET LAYOUT FOR STREET NAME SIGN

STATE OF HAWAII

DEPARTMENT OF TRANSPORTATION

HIGHWAYS DIVISION

SWING SIGN BRACKET DETAIL

KALANIANA'OLE HIGHWAY RESURFACING

Ainakoa Avenue to West Hind Drive

Federal Aid Project No. NH-072-1(47)

Not to Scale

Date: June, 1999

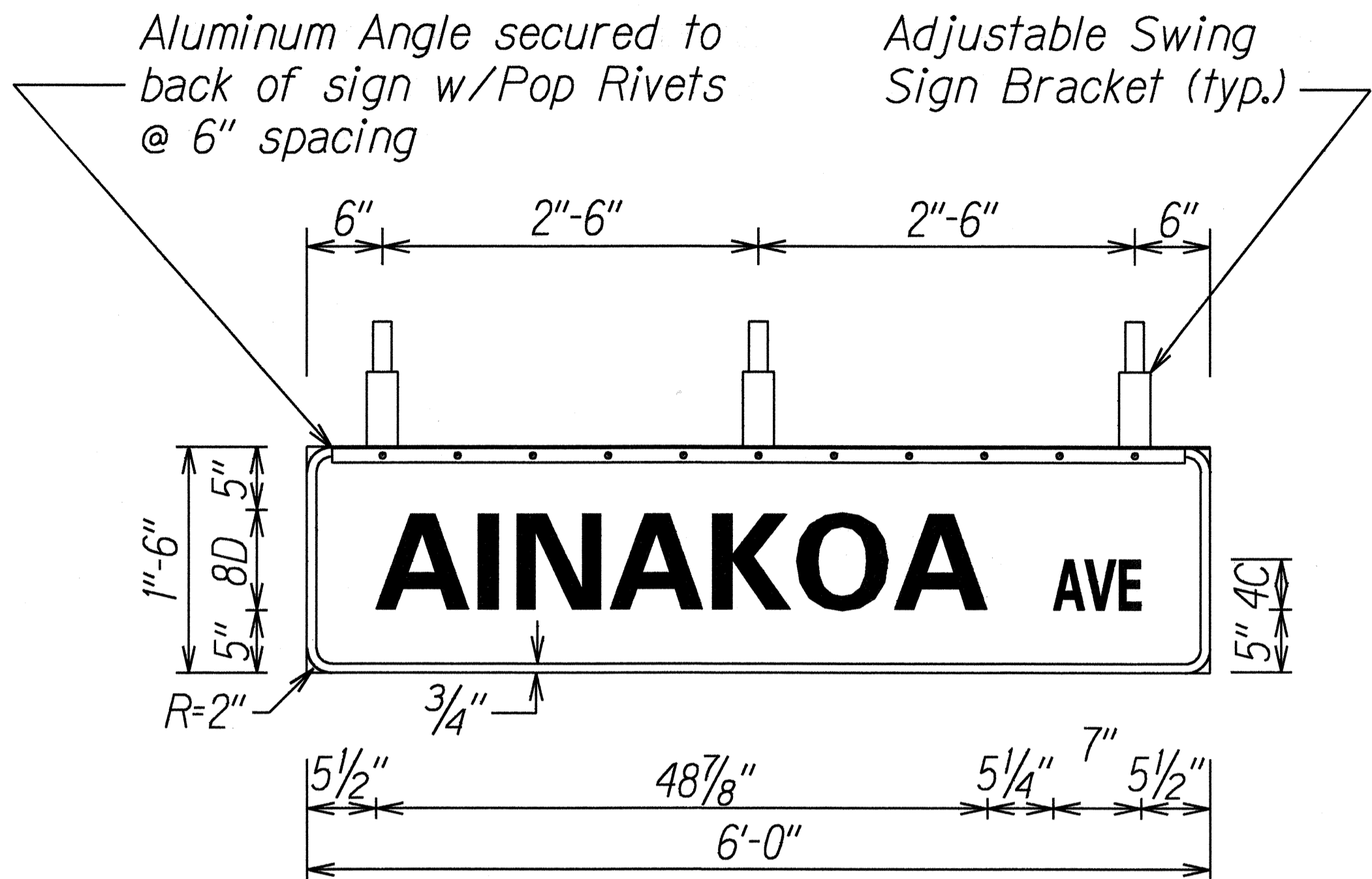
SHEET No. T9

OF 23

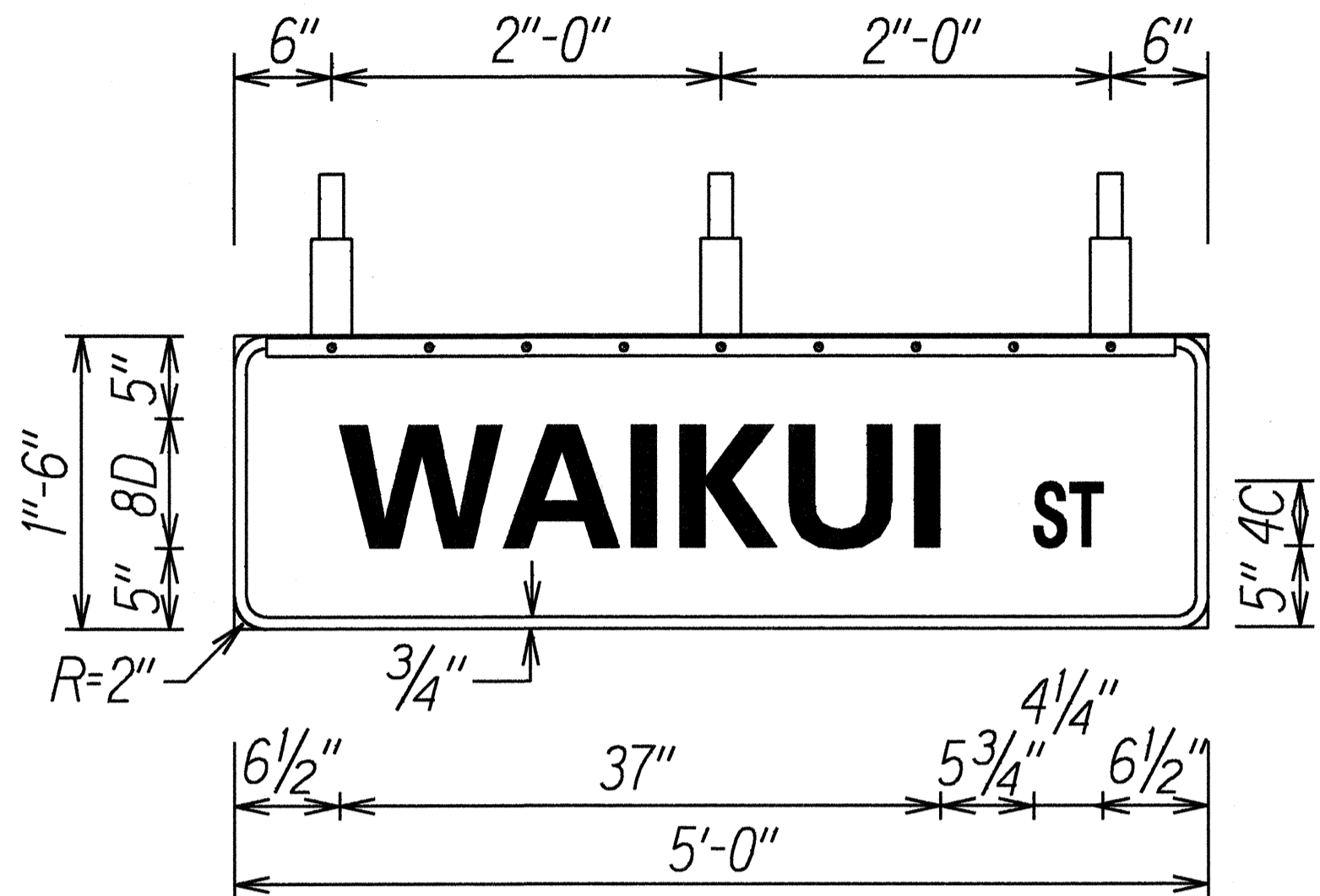
SHEETS

SURVEY PLOTTED BY	DATE
DRAWN BY	
DESIGNED BY	
QUANTITIES BY	
CHECKED BY	
ORIGINAL PLAN	
NOTE BOOK	
102 May	
102/10/99	
102/10/99	

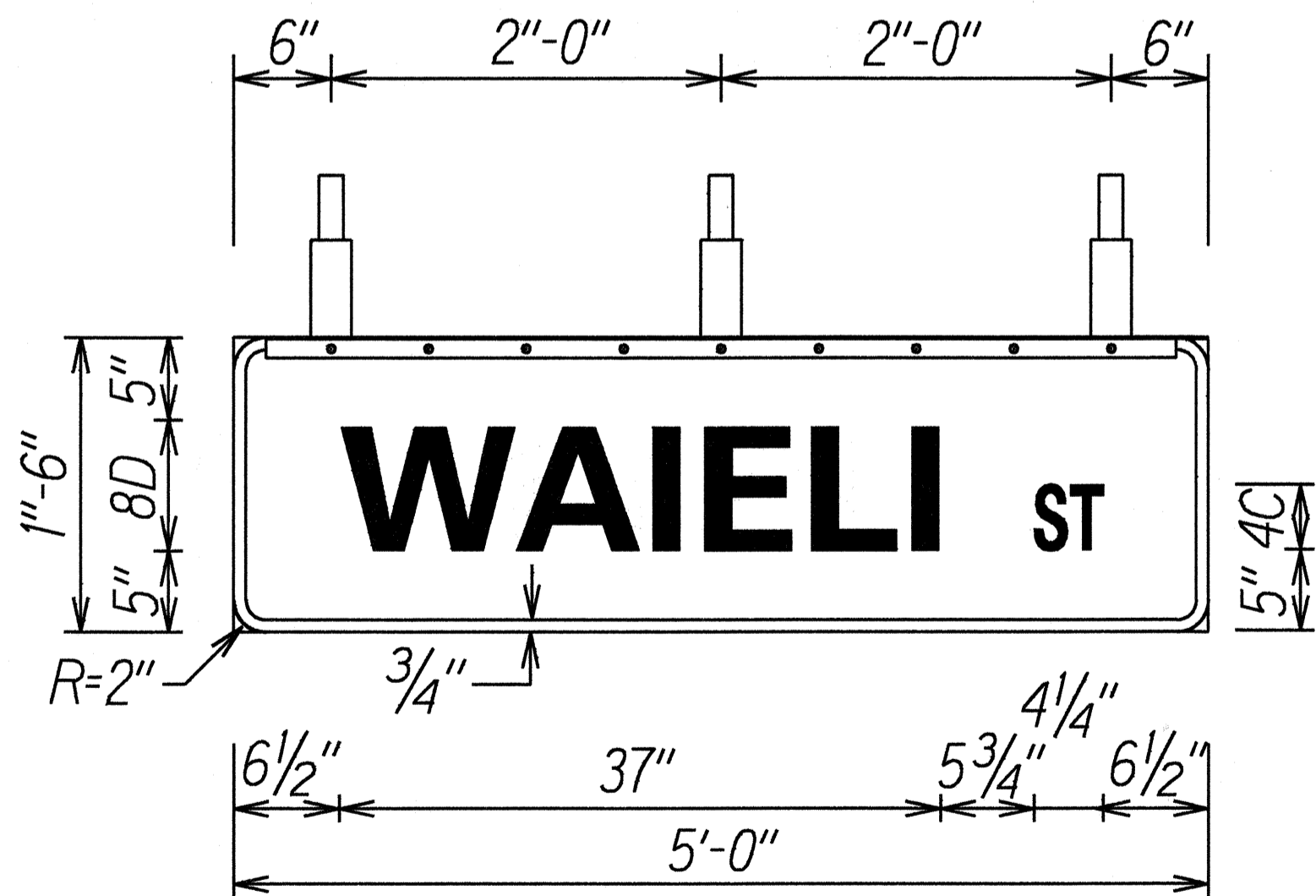
FED. ROAD DIST. NO.	STATE	FED. AID PROJ. NO.	FISCAL YEAR	SHEET NO.	TOTAL SHEETS
HAWAII	HAW.	NH-072-1(47)	2000	61	91



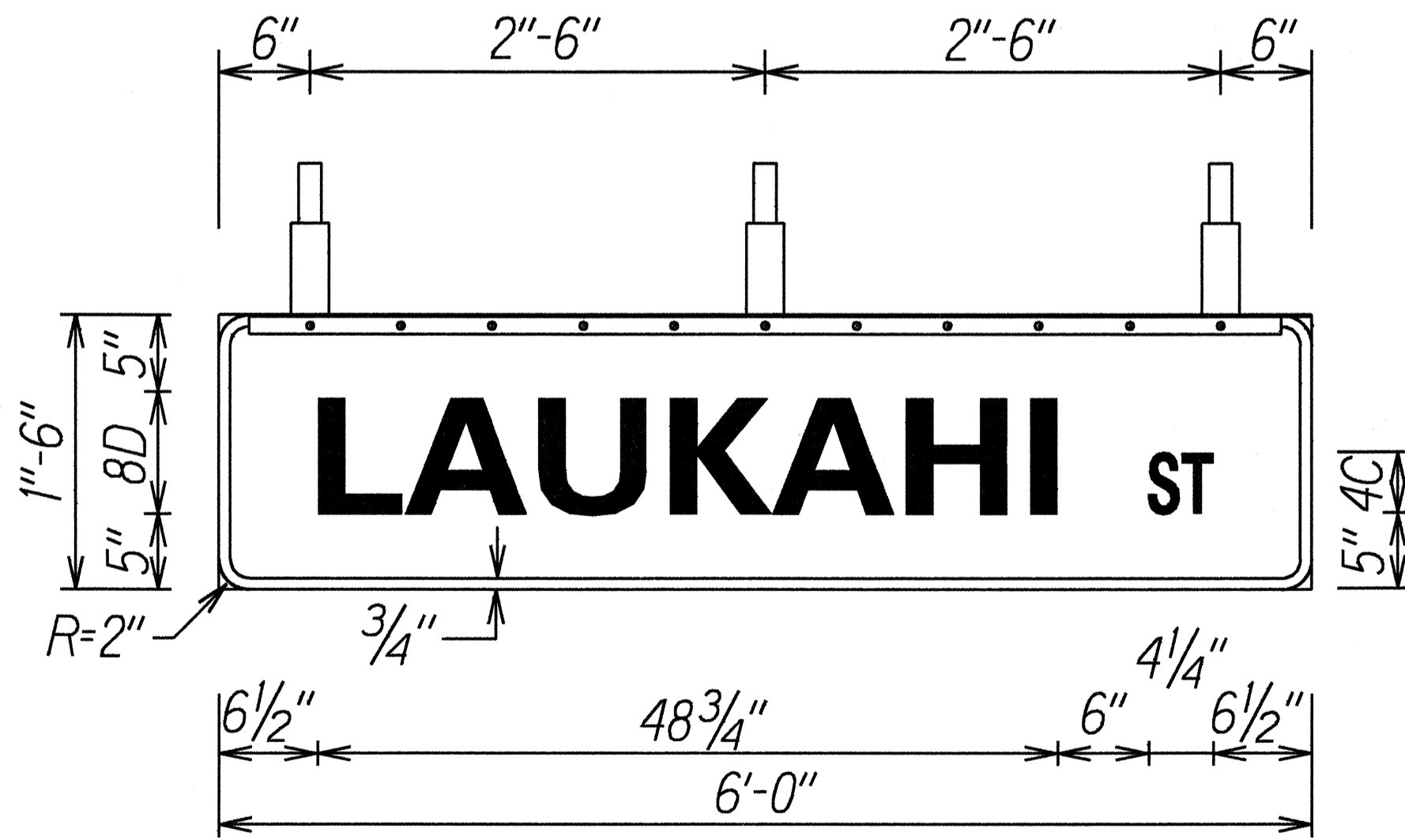
S-1



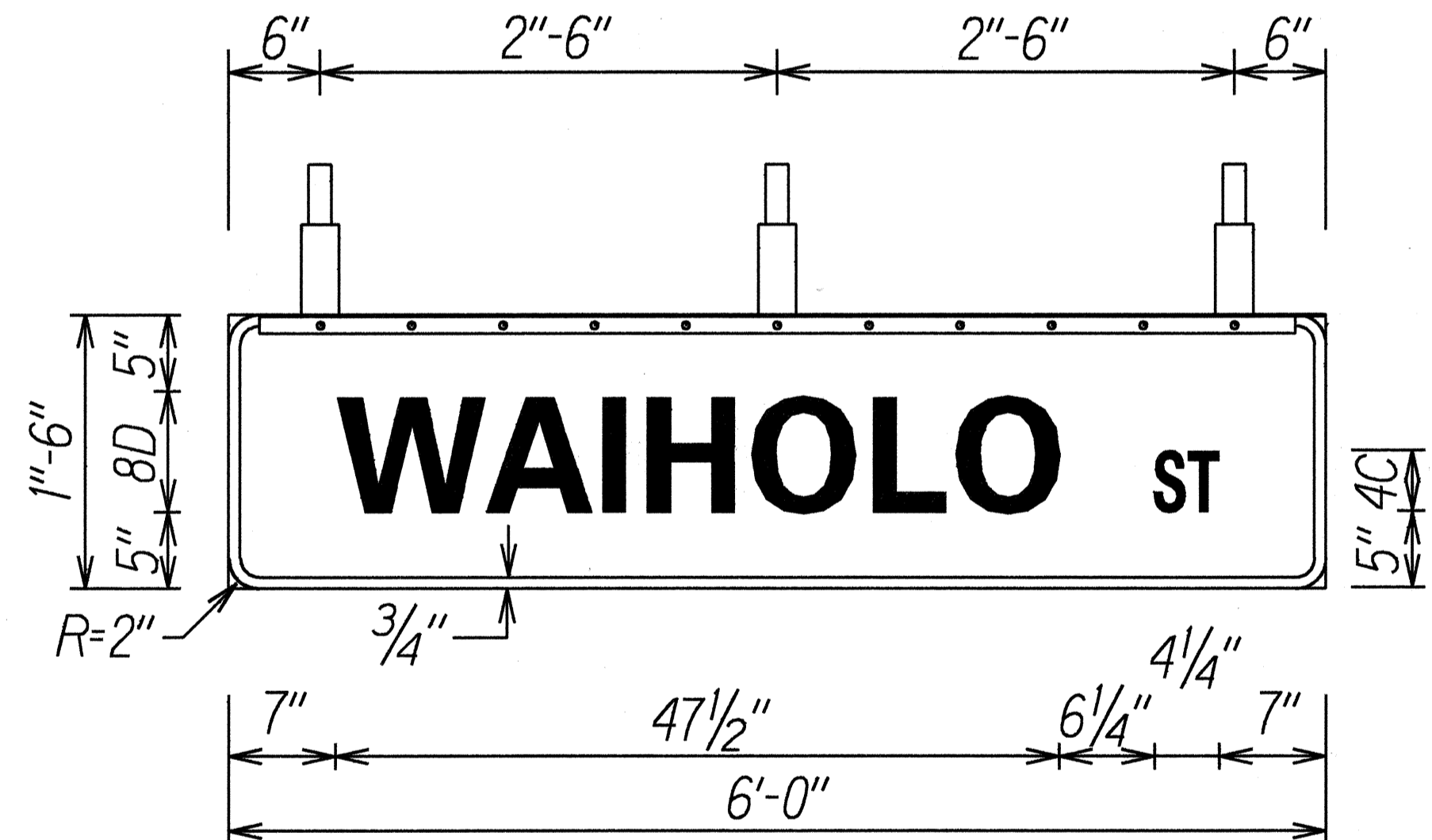
S-2



S-4



S-5



S-6

SURVEY PLOTTED BY	DATE
DRAWN BY	
TRACED BY	
QUANTITIES BY	
CHECKED BY	

STATE OF HAWAII  
DEPARTMENT OF TRANSPORTATION  
HIGHWAYS DIVISION

**SWING SIGN DETAILS**  
KALANIANA'OLE HIGHWAY RESURFACING  
Ainakoa Avenue to West Hind Drive  
Federal Aid Project No. NH-072-1(47)  
Not to Scale  
Date: June, 1999