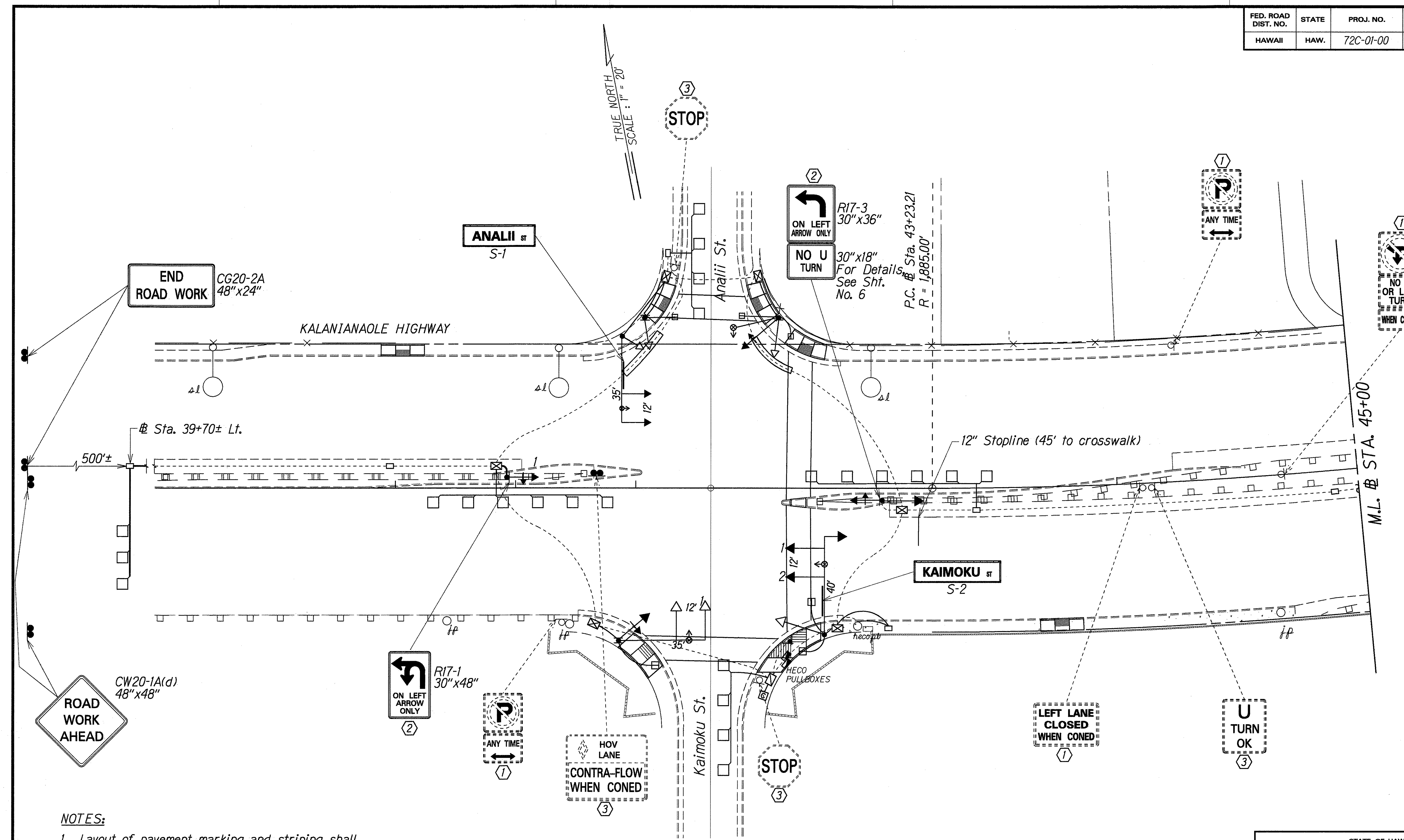


FED. ROAD DIST. NO.	STATE	PROJ. NO.	FISCAL YEAR	SHEET NO.	TOTAL SHEETS
HAWAII	HAW.	72C-01-00	2000	5	16



NOTES:

1. Layout of pavement marking and striping shall be done by the Contractor and approved by the Engineer prior to any installation work.
2. Final location of all signs shall be approved by the Engineer prior to any installation work.
3. Final location of all stoplines shall be approved by the Engineer prior to installation.

KEY:

- ① Exist. Sign(s) & Post(s) to Remain
- ② Install New Sign
- ③ Remove Exist. Sign and Post(s)

ORIGINAL PLAN	DATE
SURVEY PLOTTED BY	
DRAWN BY	
DESIGNED BY	
CHECKED BY	
NO.	

STATE OF HAWAII
DEPARTMENT OF TRANSPORTATION
HIGHWAYS DIVISION

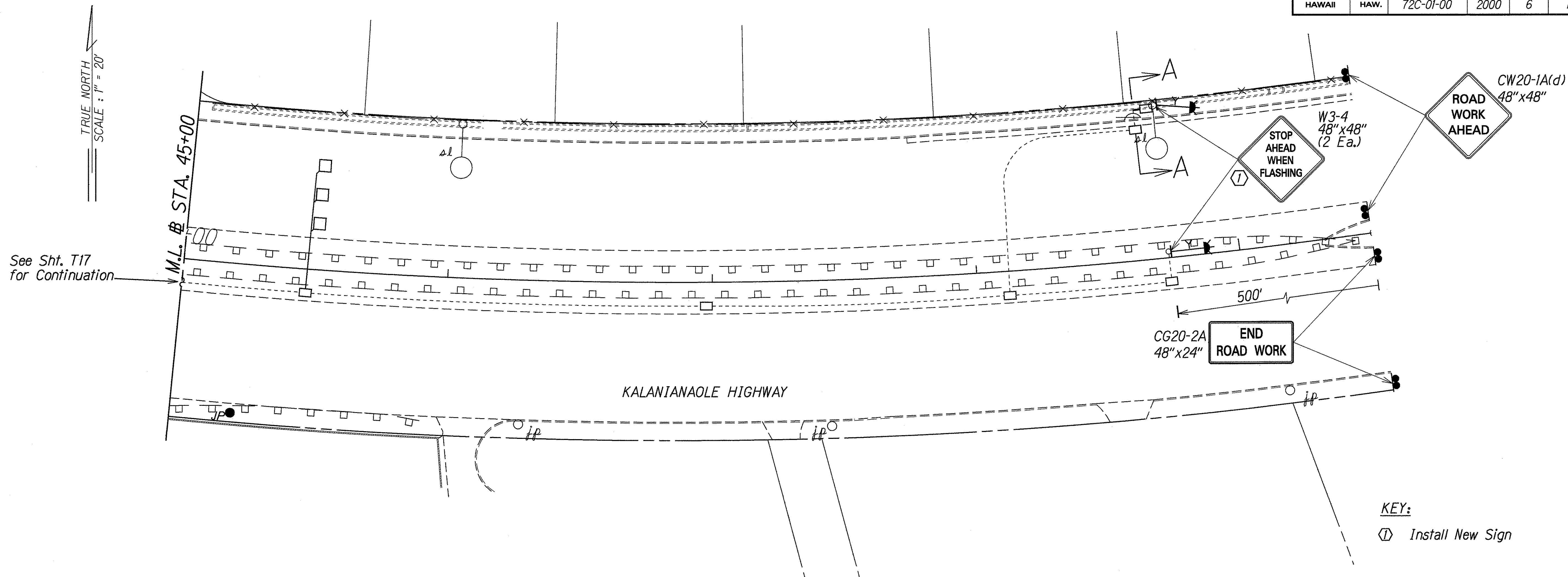
PAVEMENT MARKING & SIGNING PLAN

KALANIANA'OLE HIGHWAY
Installation of Traffic Signals
at Analii Street
Project No. 72C-01-00

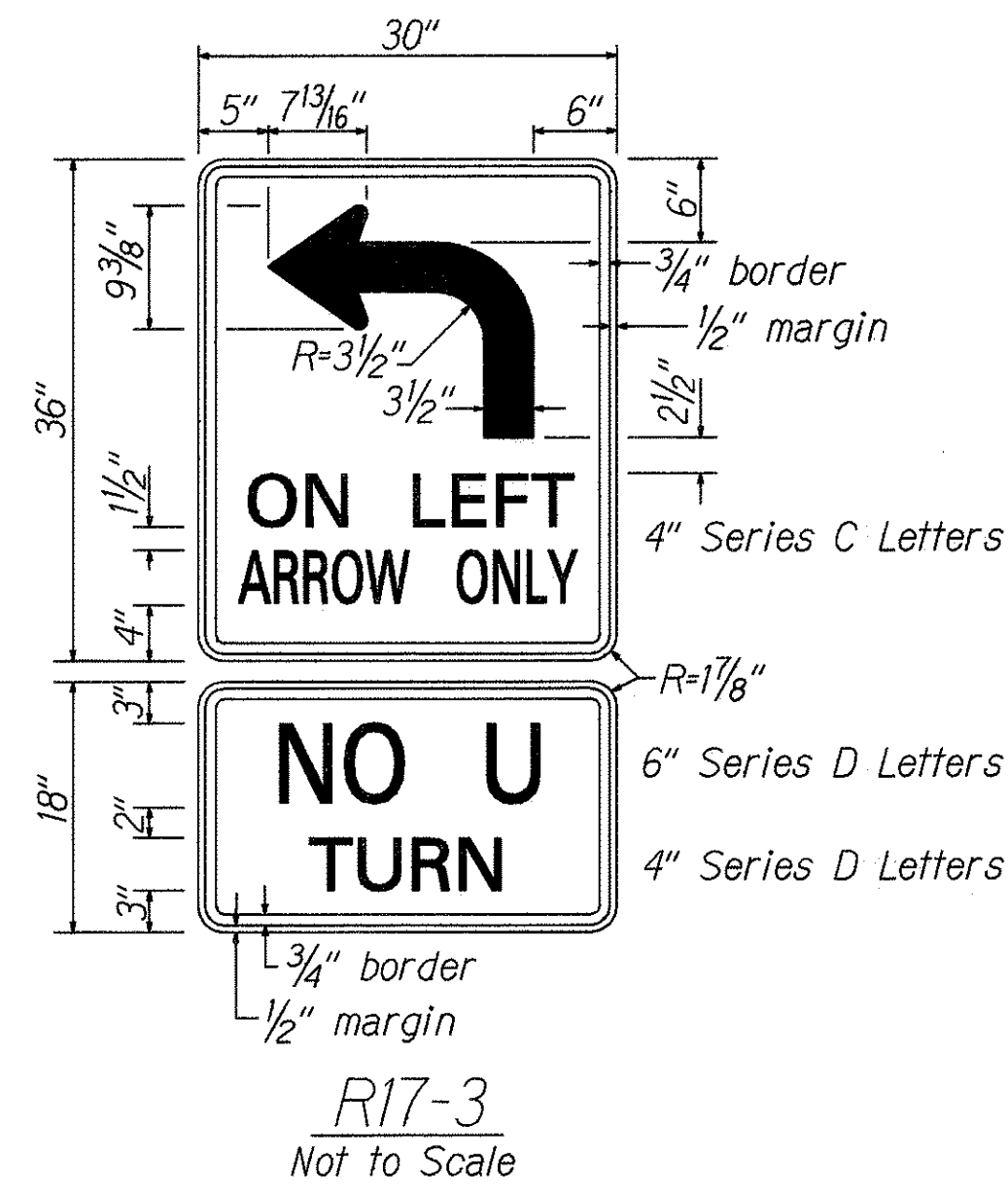
Scale: 1"=20' Date: Jan., 2000

SHEET No. 1 OF 2 SHEETS

FED. ROAD DIST. NO.	STATE	PROJ. NO.	FISCAL YEAR	SHEET NO.	TOTAL SHEETS
HAWAII	HAW.	72C-01-00	2000	6	16



TRAFFIC SIGN SUMMARY					
SIGN NO.	MESSAGE	QUANTITY			
		10 SQ. FT. OR LESS		GREATER THAN 10 SQ. FT.	
		W/POST	W/O POST	W/POSTS	W/O POSTS
R17-1	ON LEFT ARROW ONLY		1		
R17-3	ON LEFT ARROW ONLY NO U TURN				1
W3-4	STOP AHEAD WHEN FLASHING				2
TOTAL			1		3



CONSTRUCTION SIGN SUMMARY				
SIGN NO.	LOCATION	MESSAGE	W/POSTS	W/O POST
CG20-2A	STA. 34+70± LT.	END ROAD WORK	2	
CW20-1A(d)	STA. 34+70± RT.	ROAD WORK AHEAD	2	
CG20-2A	STA. 53+75± RT.	END ROAD WORK	2	
CW20-1A(d)	STA. 53+75± LT.	ROAD WORK AHEAD	2	
TOTAL			8	

SURVEY PLOTTED BY: DATE: / /
 PLAN: / /
 NOTE BOOK DESIGNED BY: Shigen Yoshida
 QUANTITIES BY: / /
 CHECKED BY: / /
 ORIGINAL: / /
 PLAN: / /
 NOTE BOOK: / /
 QUANTITIES: / /
 CHECKED: / /

STATE OF HAWAII
 DEPARTMENT OF TRANSPORTATION
 HIGHWAYS DIVISION
PAVEMENT MARKING & SIGNING PLAN
 KALANIANA'OLE HIGHWAY
 Installation of Traffic Signals
 at Anali Street
 Project No. 72C-01-00
 Scale: 1"=20' Date: Jan, 2000
 SHEET No. 2 OF 2 SHEETS