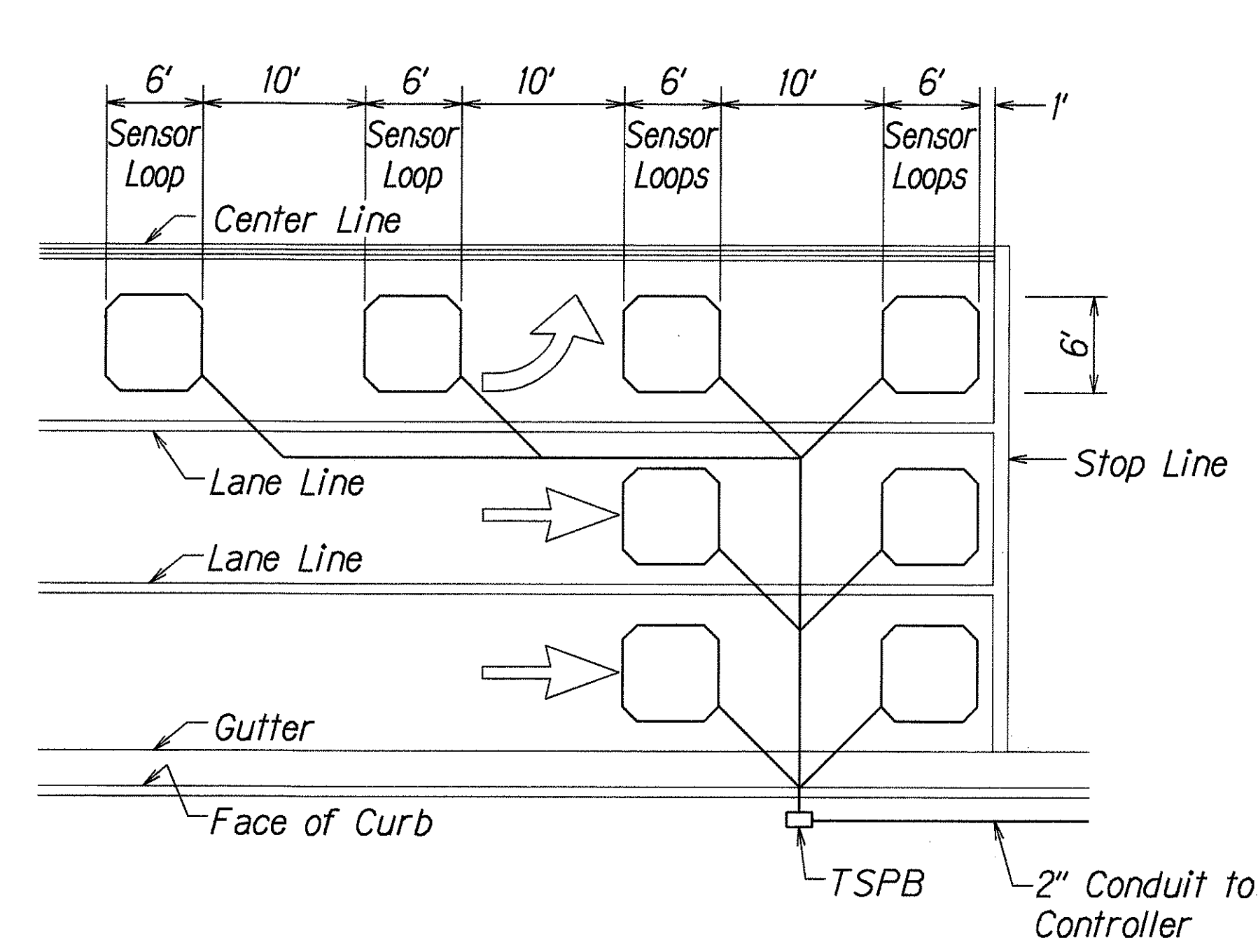
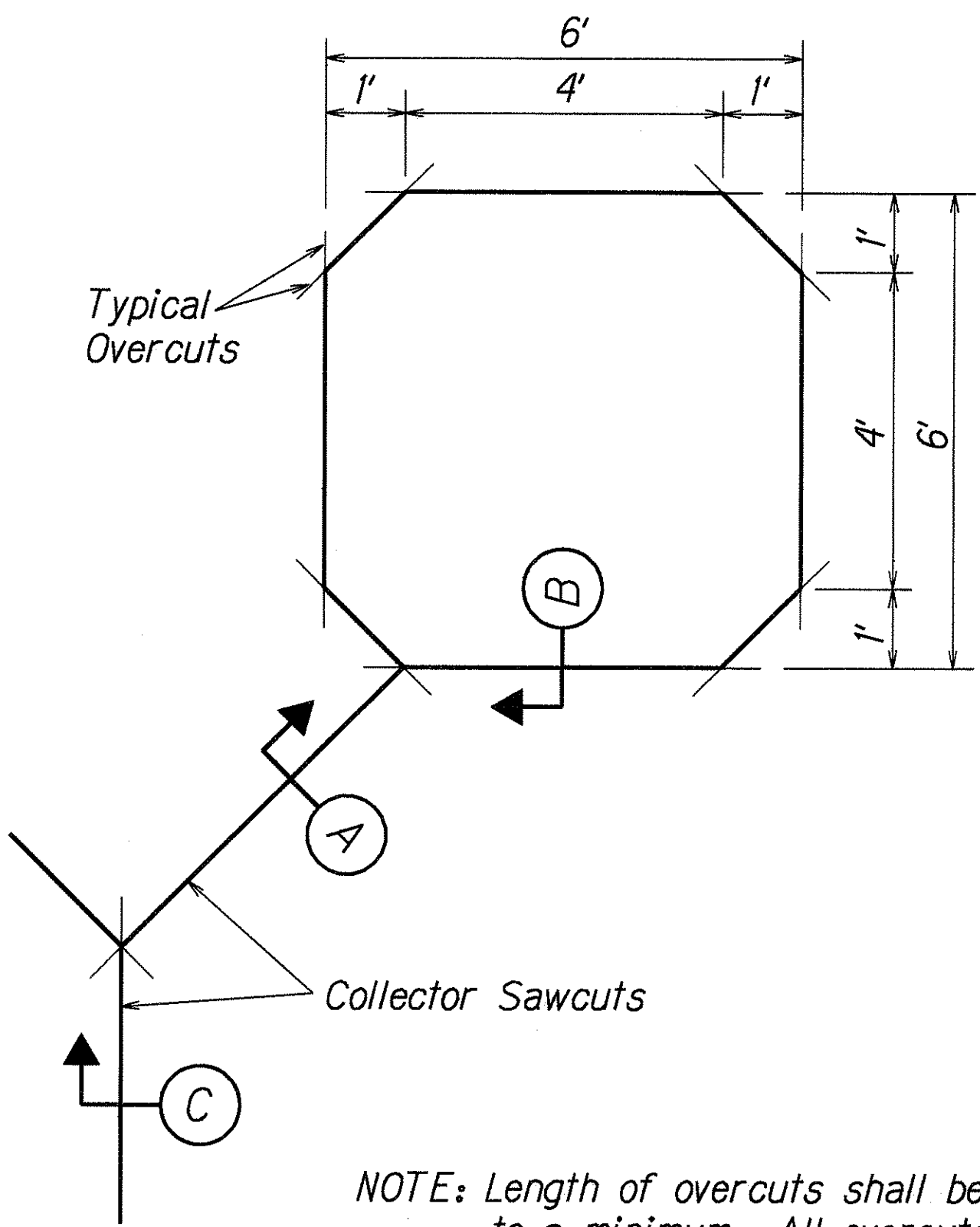


FED. ROAD DIST. NO.	STATE	PROJ. NO.	FISCAL YEAR	SHEET NO.	TOTAL SHEETS
HAWAII	HAW.	72C-01-00	2000	16	16

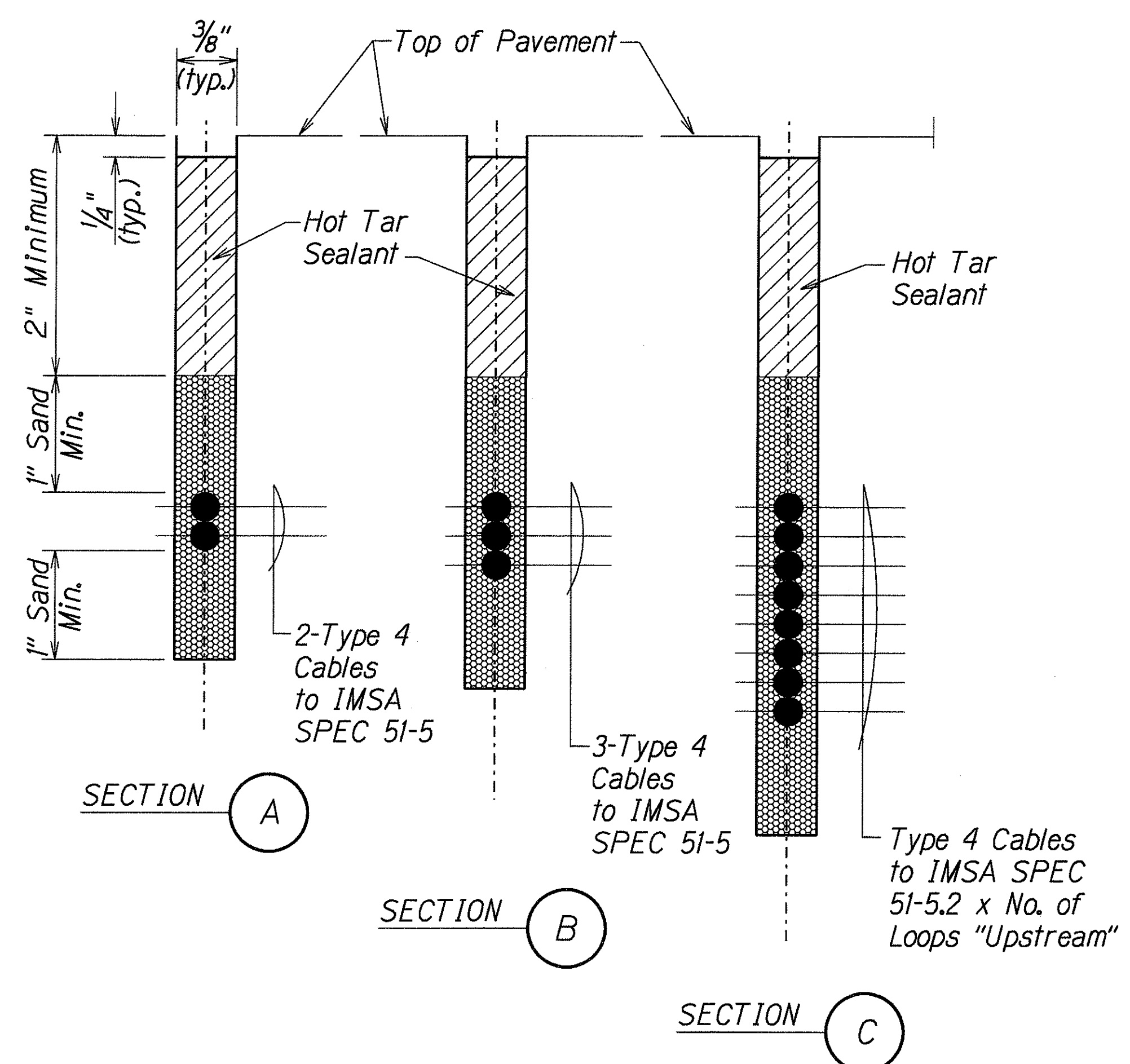


- NOTES:
1. Center sensor loops in lanes.
 2. Collector cables shall be twisted 2 turns per foot.
 3. Number of loops and locations vary. See project plans.
 4. Number and locations of collector sawcuts may be varied in the field to suit.

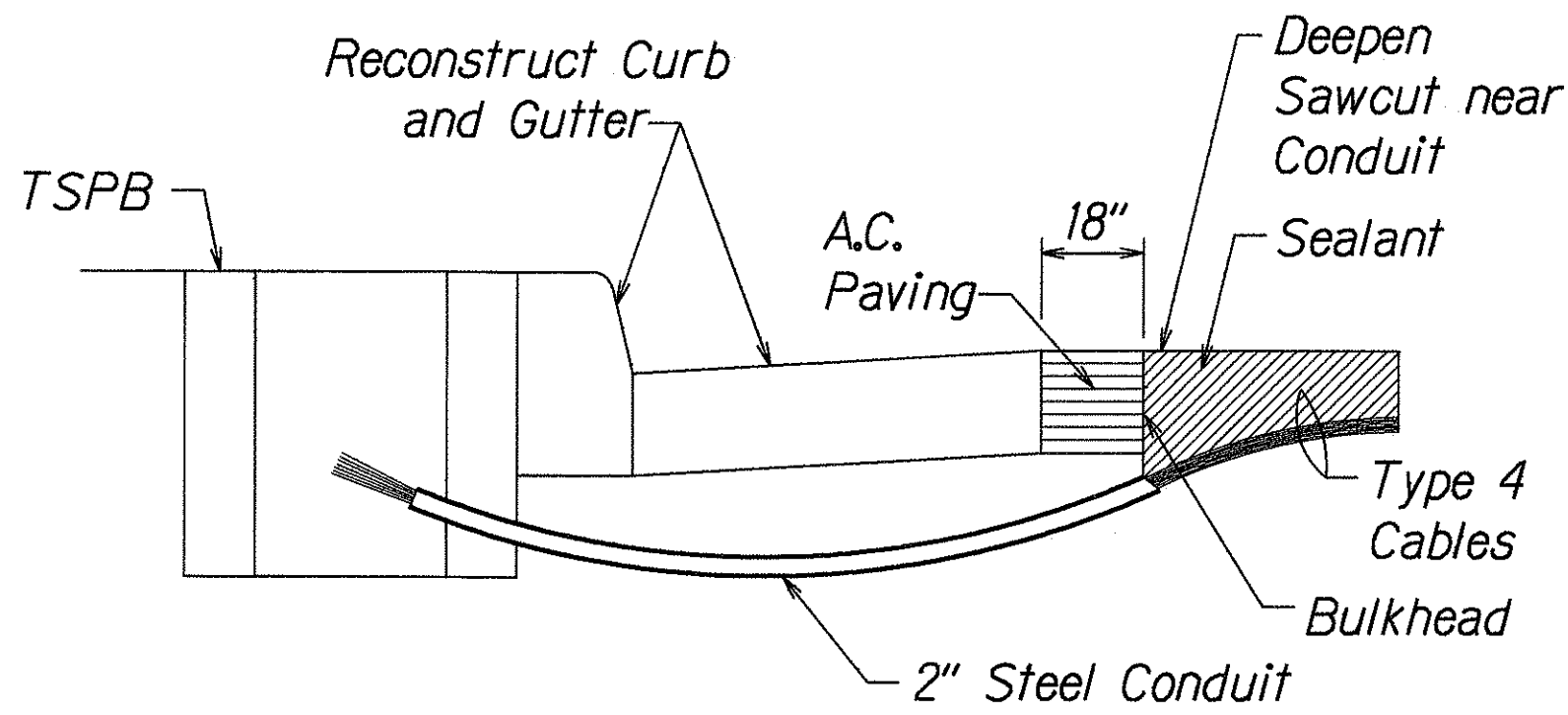
TYPICAL SENSOR LOOP LAYOUT



TYPICAL SENSOR LOOP SAWCUT DETAIL

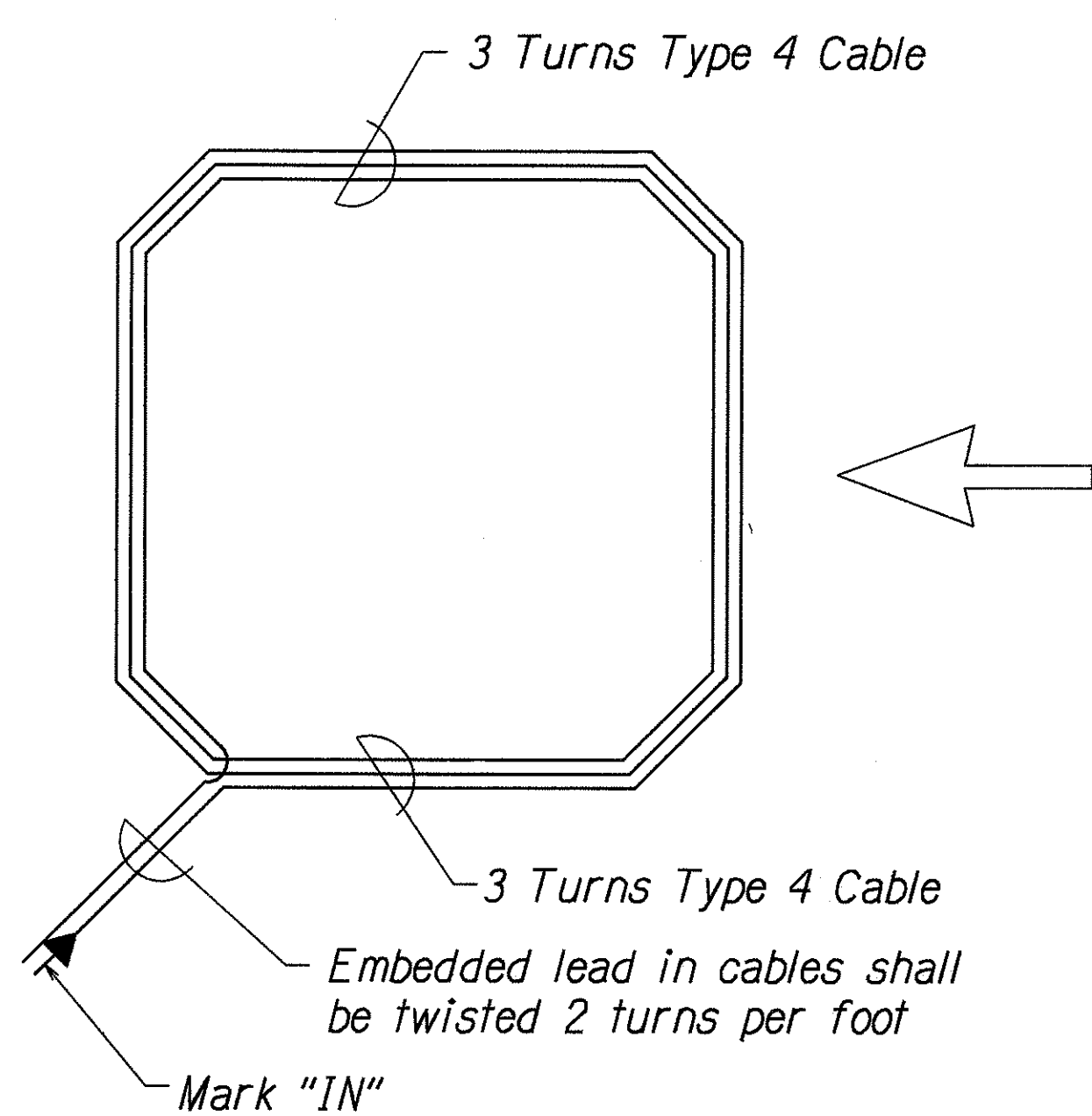


TYPICAL SECTION THROUGH SENSOR LOOP



- NOTES ON CONSTRUCTION AT END OF SAWCUT
1. Seal roadway end of conduit after installation of conductors.
 2. Install bulkhead across conduit trench.
 3. Place hot tar in sawcut.
 4. Backfill over conduit with new A.C.
 5. Reconstruct curb and gutter as required.

DETAIL OF SENSOR LOOP INSTALLATION AT EDGE OF ROADWAY



TYPICAL SENSOR LOOP WIRING DIAGRAM

ORIGINAL PLAN	DATE
DESIGNED BY	DATE
CHECKED BY	DATE
NOTED BY	DATE
QUANTITIES BY	DATE
CHECKED BY	DATE

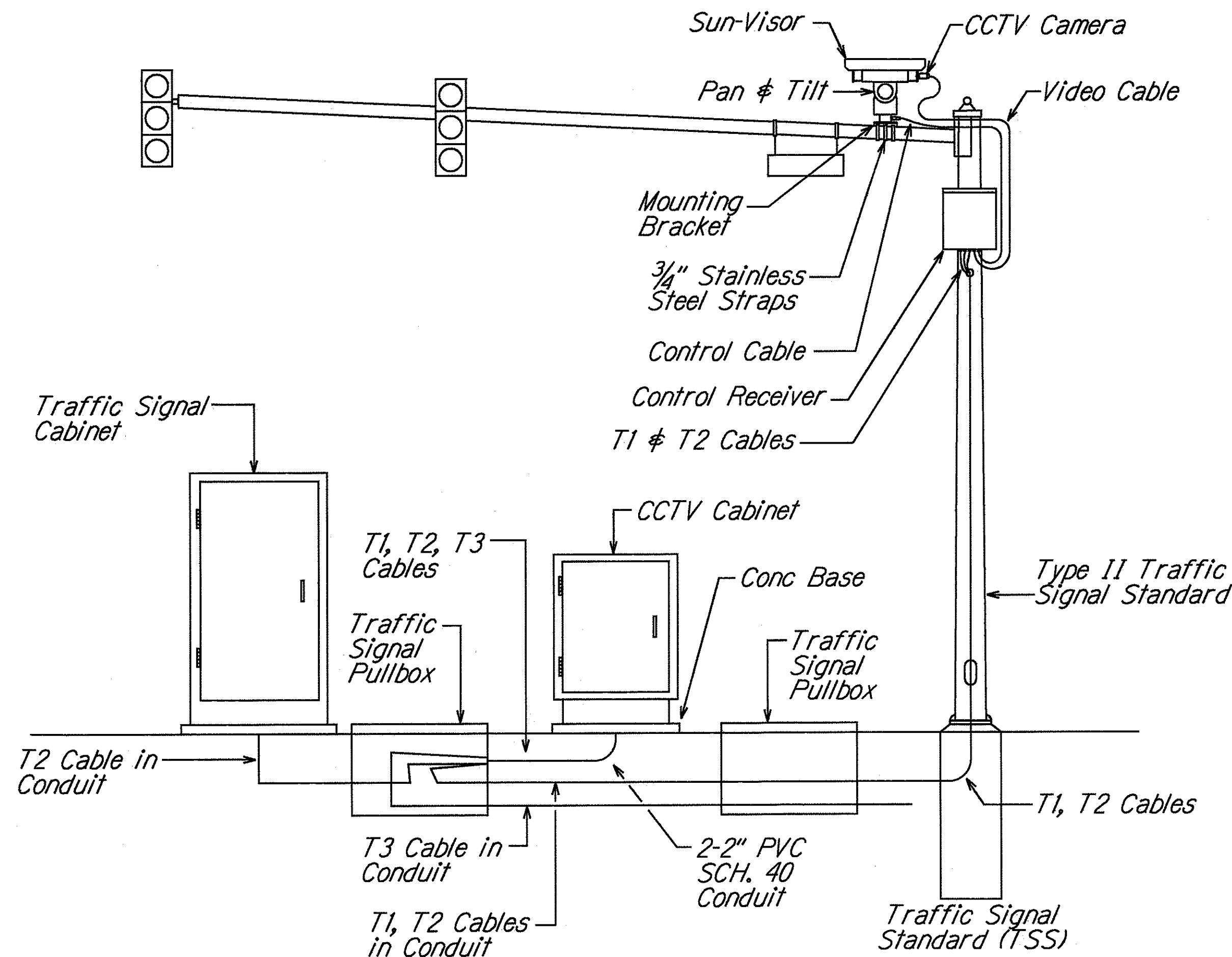
STATE OF HAWAII
DEPARTMENT OF TRANSPORTATION
HIGHWAYS DIVISION

LOOP DETECTOR DETAILS
KALANIANA'OLE HIGHWAY
Installation of Traffic Signals
at Anali Street
Project No. 72C-01-00

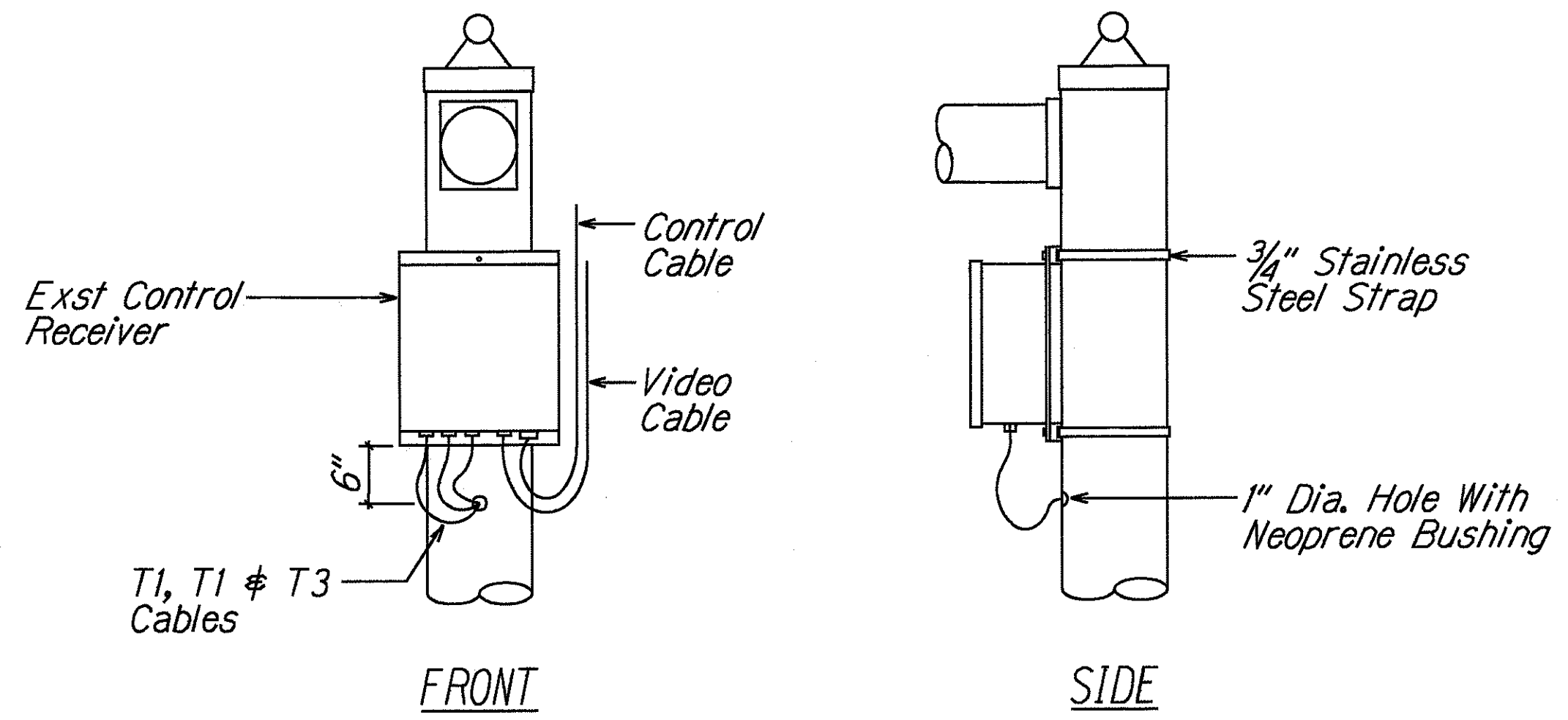
Not to Scale
SHEET No. 1 OF 1 SHEETS

Date: Jan., 2000

FED. ROAD DIST. NO.	STATE	FED. AID PROJ. NO.	FISCAL YEAR	SHEET NO.	TOTAL SHEETS
HAWAII	HAW.	72C-01-00	2000	ADD. 16S-1	0



A
E-13 **TRAFFIC SIGNAL STANDARD TRAFFIC CCTV CAMERA INSTALLATION DETAIL**
NOT TO SCALE



TYPE OF CABLES FOR INSTALLATION	
ITEM	DESCRIPTION
T1	Video Coaxial & 4-#22 Control
T2	3-#14 SVT Power
T3	24 Strand Fiberoptic Cable

B
E-13 **RECEIVER DETAIL**
NOT TO SCALE

DESIGNED BY	DATE
DRAWN BY	
CHECKED BY	
NOTED BY	
QUANTITIES BY	
REVISIONS	

5/15/00	Add CCTV System
DATE	REVISION

STATE OF HAWAII
DEPARTMENT OF TRANSPORTATION
HIGHWAYS DIVISION

CCTV SYSTEM INSTALLATION DETAIL

KALANIANA'OLE HIGHWAY
Installation of Traffic Signal
at Analii Street
Project No. 72C-01-00

Scale: As Noted Date: May, 2000

SHEET No. 1 OF 1 SHEETS