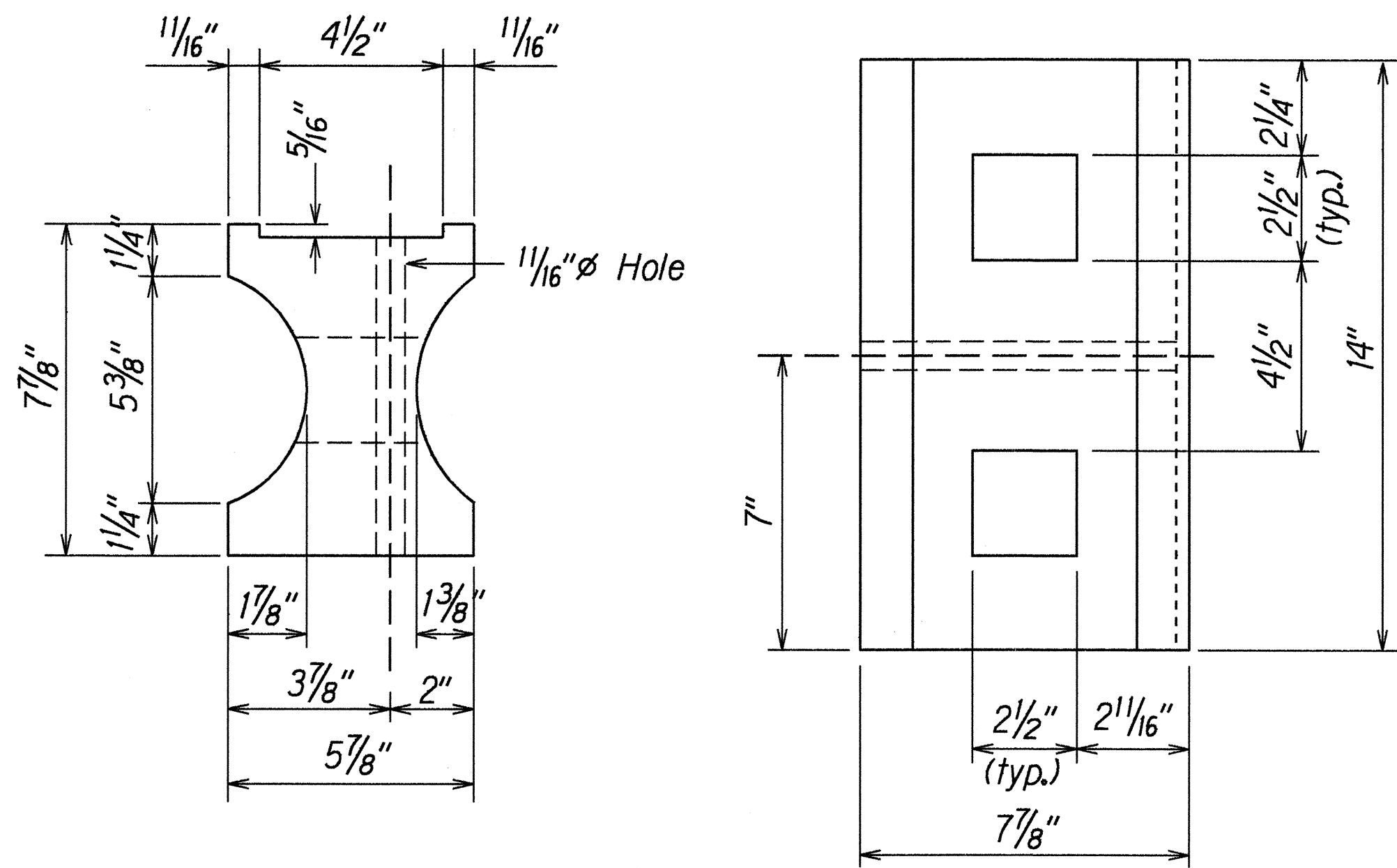
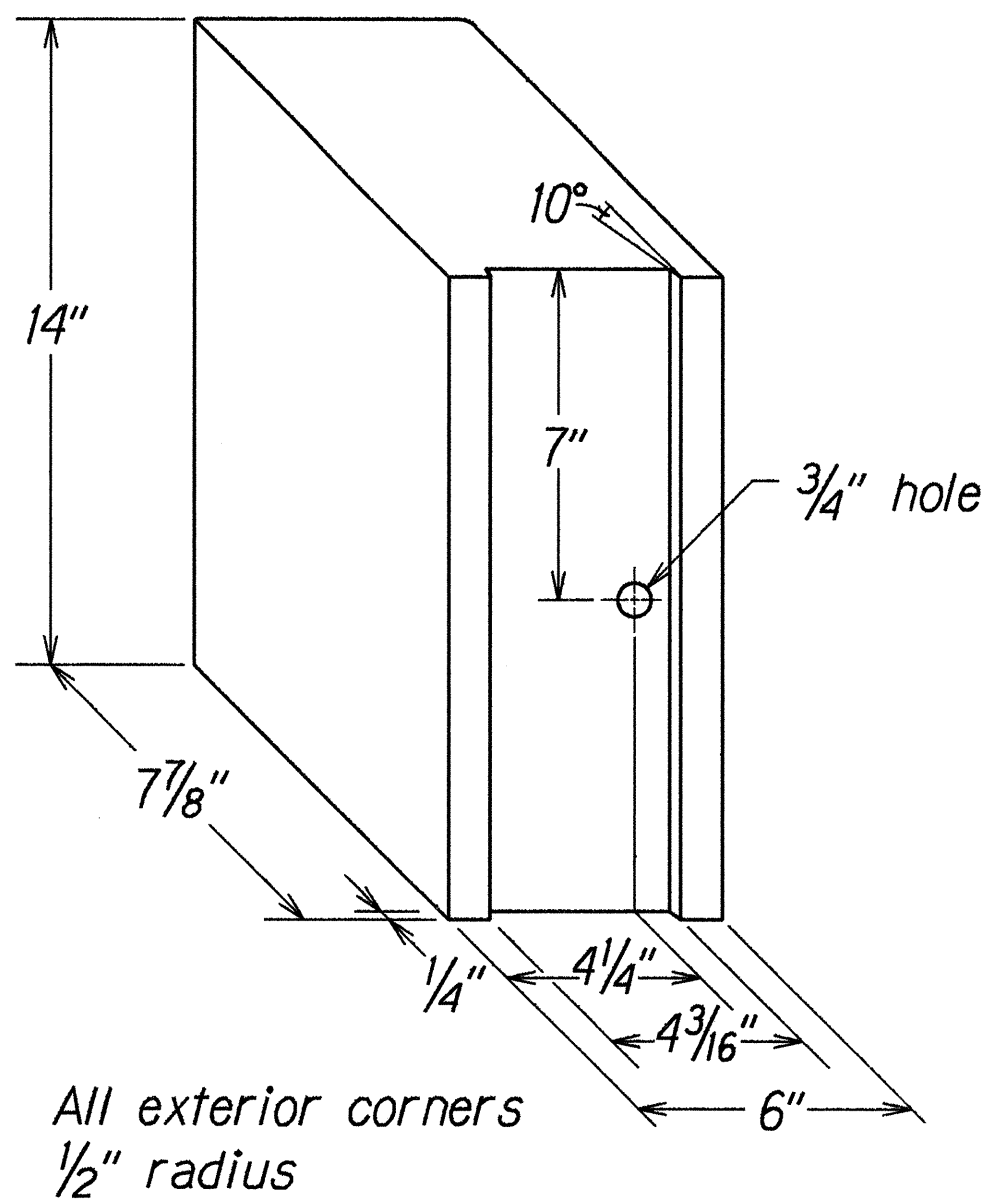


FED. ROAD DIST. NO.	STATE	FED. AID PROJ. NO.	FISCAL YEAR	SHEET NO.	TOTAL SHEETS
HAWAII	HAW.	STP-072-1(45)	1999	ADDJ8	33



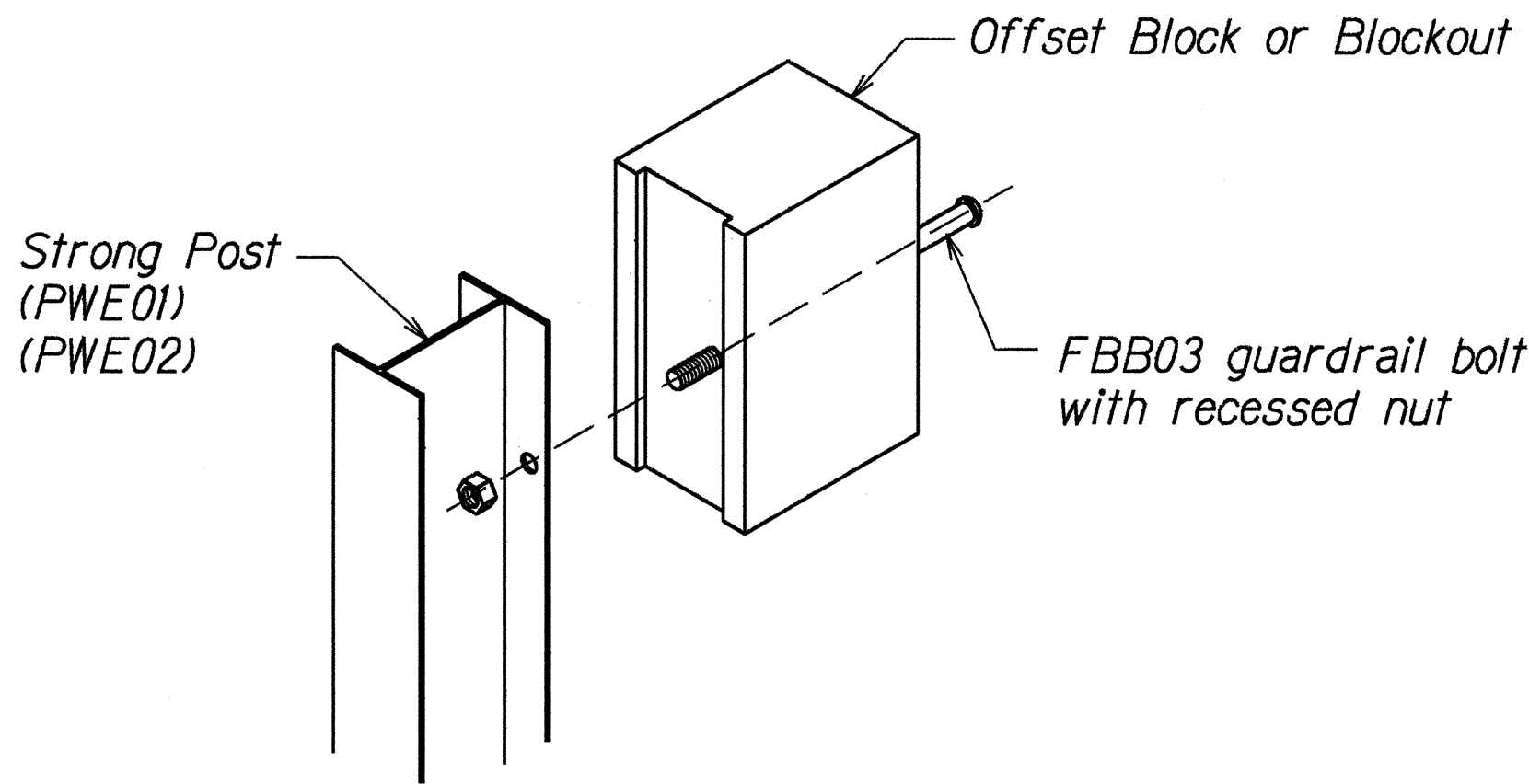
TOP
SIDE
RECYCLED PLASTIC BLOCKOUT (TYPE I)



RECYCLED POLYETHYLENE
OFFSET BLOCK (TYPE II)

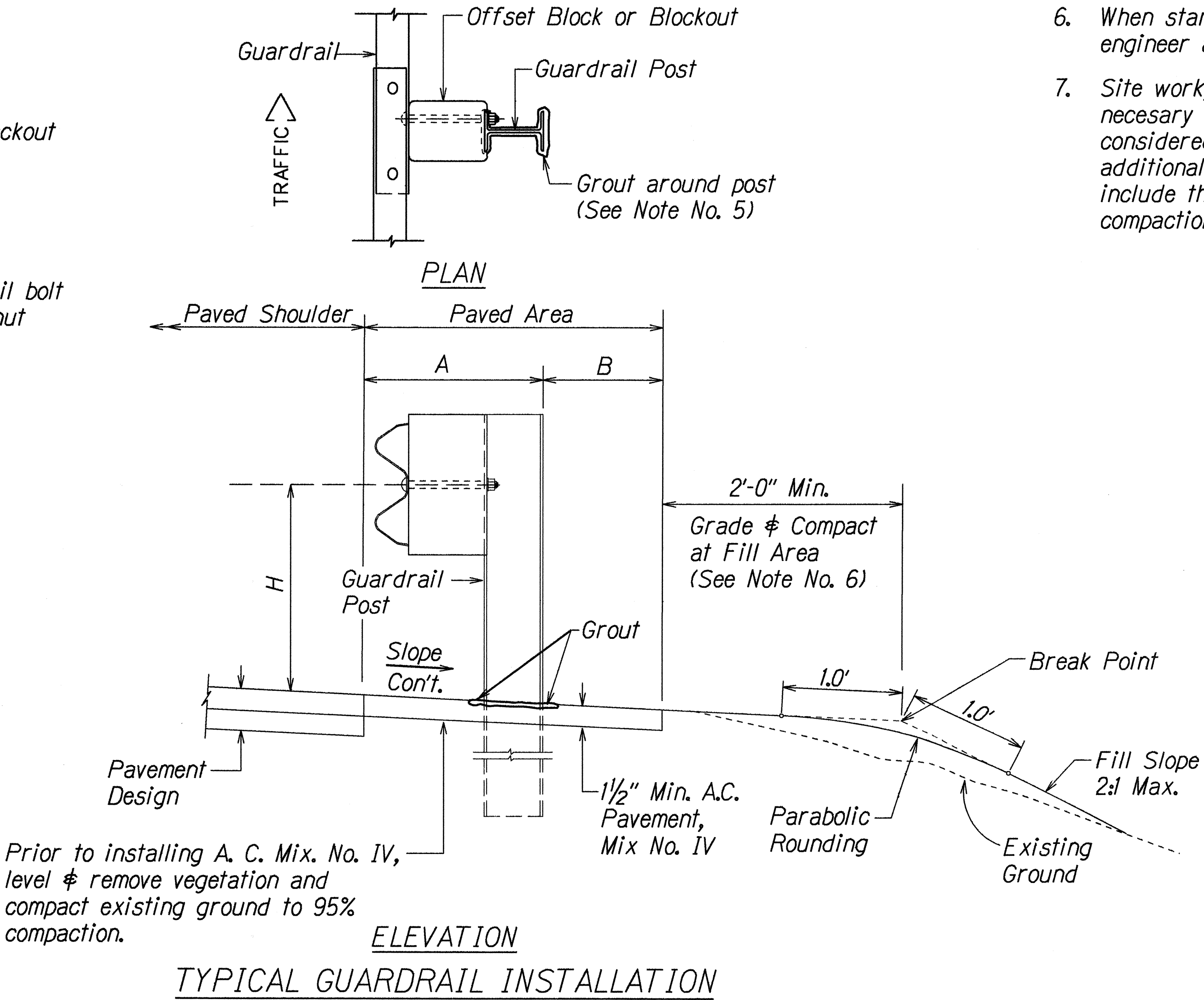
STRONG POST GENERAL NOTES

1. All hardware, posts and fasteners shall be hot-dip zinc coated galvanized after fabrication. No punching, drilling or cutting will be permitted after galvanizing.
2. Where conditions require, special post lengths in increments of 6 inches may be specified.
3. All fasteners, posts, and rail elements (i.e. FBB03, PWE01, RWM02b, etc.) shall conform to the latest edition and amendments of "A Guide to Standardized Highway Barrier Rail Hardware," a report prepared and approved by the AASHTO- AGC-ARTBA Joint Cooperative Committee, Subcommittee On New Highway Materials, Task Force 13 Report. Dimensions of fasteners, posts and rail elements have been converted from metric units into their present form.
4. The Recycled Plastic Block or Offset Block shall be approved by the State.
5. After the guardrail posts are installed in the paved area, the Contractor shall grout around the guardrail post and seal all cracks in the paved area that was caused during the guardrail post installation. If required by the inspector/engineer, the Contractor shall tamper the paved area around the guardrail post prior to grouting. The cost for this work shall not be paid for separately, but shall be considered incidental to the various guardrail items.
6. When standards for the fill slope area cannot be met, a site specific, engineer approved design may be used.
7. Site work, material, labor and incidentals beyond the paved shoulder, necessary for the construction of the strong post guardrail shall be considered incidental to the strong post guardrail pay item and no additional payment will be made. Work, material, labor and incidentals include the asphalt concrete pavement, leveling, removal of vegetation, compaction and parabolic rounding.



Exploded View
(Rail and washer not shown)
STEEL POST AND BLOCK DETAIL

GUARDRAIL TYPE	DIMENSION		
	H	A	B
Strong Post w/W Beam	1'-9 5/8"	1'-6"	1'-0"
Rubrail	2'-0"	1'-6"	2'-0"
Modified Thrie Beam	2'-0"	2'-0"	1'-0"



ELEVATION
TYPICAL GUARDRAIL INSTALLATION

STATE OF HAWAII

DEPARTMENT OF TRANSPORTATION

HIGHWAYS DIVISION

STRONG POST GUARDRAIL

DETAILS & NOTES

KALANIANA'OLE HIGHWAY SHOULDER IMPROVEMENTS

Makapuu Lookout to Kealahou Street

Fed. Aid Project No. STP-072-1(45)

Scale: NTS

Date: March, 1999

SHEET No. 1

OF 1

SHEETS

ORIGINAL PLAN	DATE	BY
NOTED	DATE	BY
DESIGNED BY	DATE	BY
CHECKED BY	DATE	BY
QUANTITIES BY	DATE	BY
NO.	DATE	BY

12/01/99 tdt/rub/guardrail/tes01rev.dgn Standard plan TE-50 103/06/07/ HWY-TD B-1