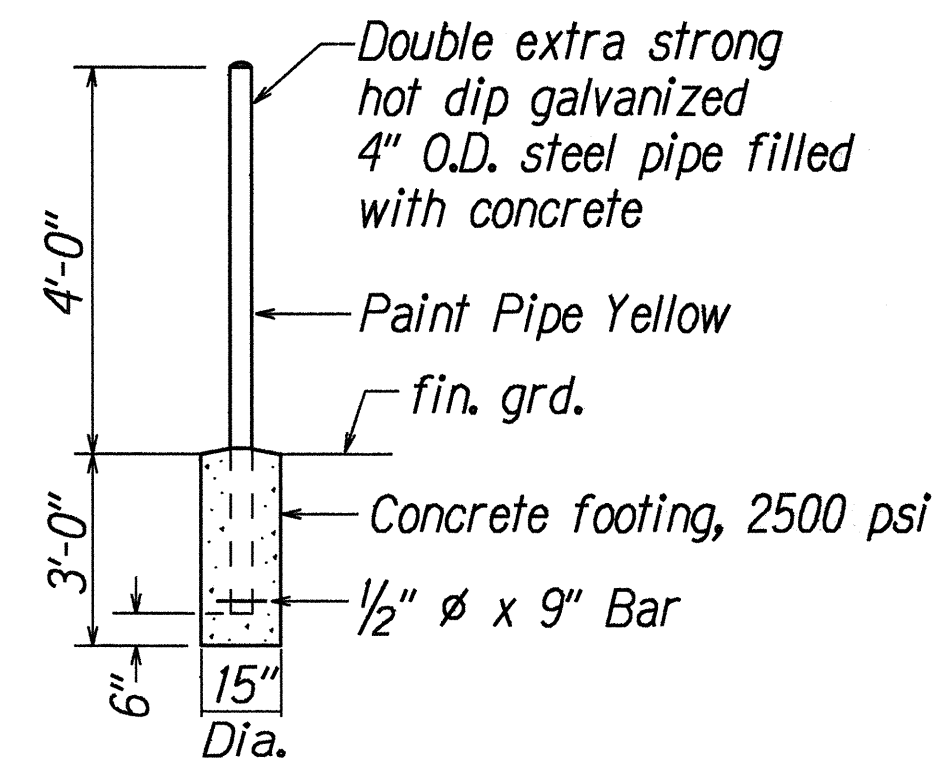


1. The locations of the Traffic Signal Standards, Traffic Signal Standards w/Mast Arms, Pedestrian Push Buttons, Traffic Controller, Pullboxes, Conduits and Loop Detectors shall be staked out in the field by the Contractor and approval of the locations shall be obtained from the Engineer prior to construction and installation.
2. All splicing shall be done in the pullboxes.
3. Furnishing and installing the conduit stubouts (pullboxes to edge of pavement) will not be paid for separately but shall be considered incidental to the various contract items.
4. A solid #8 bare copper wire shall be pulled with the traffic signal control cable for equipment ground. Cost shall be incidental to the installation of the control cable.
5. All Traffic signal controller equipment shall be completely wired in the cabinet and shall control the traffic signals as called for in the plans.
6. The loop amplifier units furnished for this project shall be capable of operating the loop detector configurations shown on the plans. Cost for the loop amplifier shall be incidental to the installation of the loop detector.
7. Should any defect be encountered during the warranty period, the manufacturer will be notified and he shall promptly correct such defect. Service call (by factory qualified representative) during the warranty period for repairs or other maintenance shall be answered within 24 hours and shall be done at no expense to the State. All repairs shall be done as soon as possible.
8. All traffic signal work shall conform to the requirements of the "Manual On Uniform Traffic Control Devices For Streets And Highways", Federal Highway Administration (1988) and Amendments.
9. Locations of traffic markings and markers (lane lines, Stop lines, crosswalk, etc.) shown on the plans shall be verified with the Engineer prior to the installation of the traffic signal system.
10. The Contractor shall notify the Traffic Signal Branch, Department of Transportation Services, City & County of Honolulu, (phone no. 527-5007) two weeks prior to commencing any work on the traffic signal system.
11. The Department of Transportation Services, City & County of Honolulu, will assist the Engineer in construction inspection for the traffic signal system. The Contractor shall notify the Electrical and Maintenance Services Division, Department of Transportation Services, three (3) working days prior to commencing work on the traffic signal system (phone no. 527-5007).
12. Installation of the Opticom Receiver shall conform in accordance with the Standard Details of the Department of Transportation Services, City & County of Honolulu, Electrical and Maintenance Services Division, and all subsequent amendments and additions.

	New Traffic Signal Controller
	New Traffic Signal Conduits & Cables
	New 12" RYG Traffic Signal Head
	New 12" RYU Traffic Signal Head
	New 12" RYV Traffic Signal Head
	New 12" RYV Traffic Signal Head (Programmed Visibility)
	New Type I Traffic Signal Standard w/Traffic Signal Head as specified on plan
	New Type II Traffic Signal Standard w/Mast Arm and Traffic Signal Heads (length of mast arm & distance between signal heads as specified on plan)
	New Pedestrian Signal Head
	New Type B Pullbox
	New Type B Pullbox w/Modified Cover
	New Type C Pullbox (C#C Type)
	New Type C Pullbox w/Modified Cover (C#C Type)
	New Loop Detectors
	Opticom Receiver
	New Pipe Guard
	New HECO Handhole (2'x4')
	New HECO Transformer w/Concrete Pad



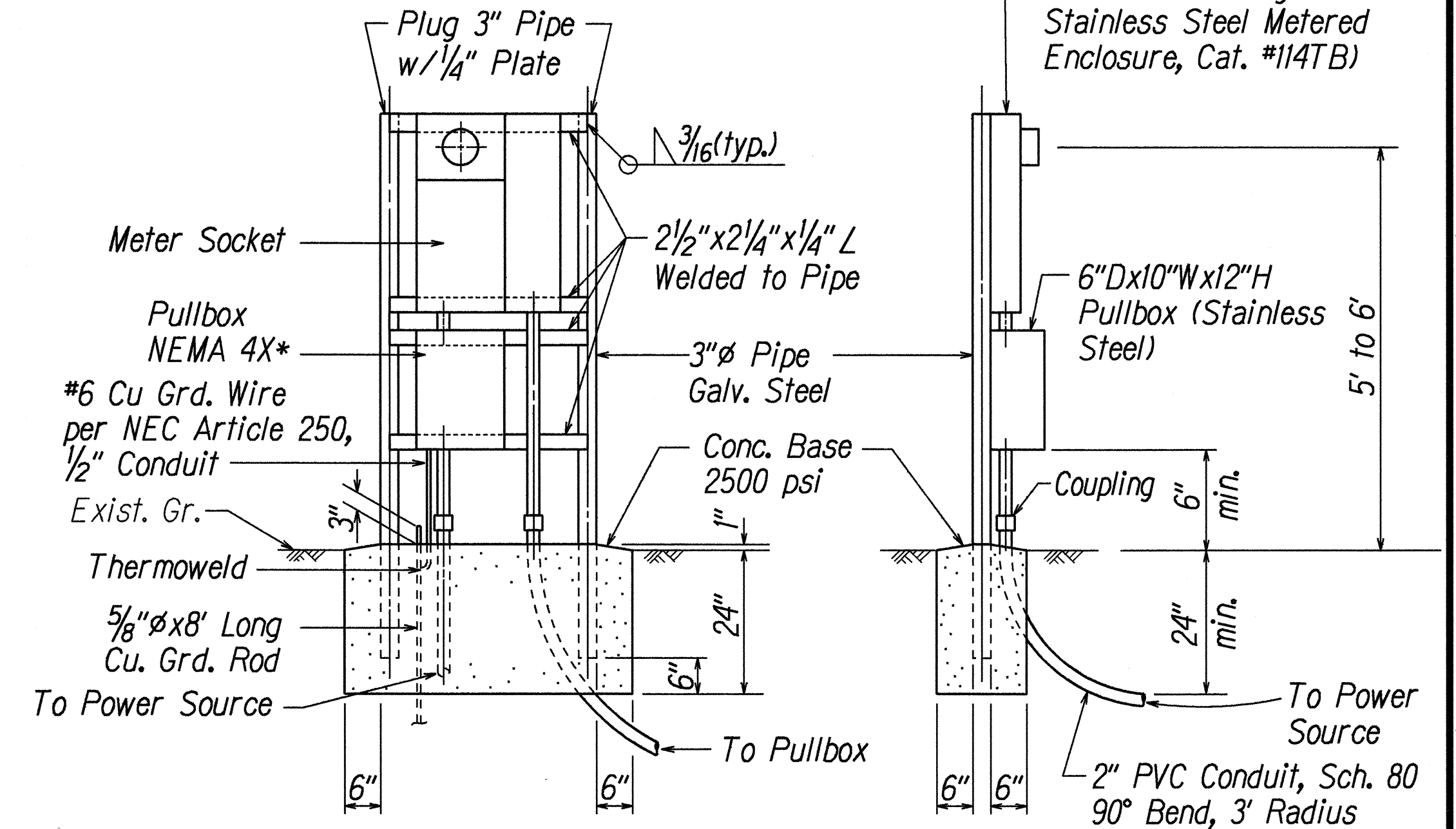
TYP. ELEVATION

Cost of the conc. filled galvanized pipe guard shall be incidental to other items of work

PIPE GUARD DETAIL

Not to Scale

1. Pedestal shall be hot-dipped galv. after fabrication.
2. All fastening bolts, nuts & washers shall be stainless steel.
3. Provide 4 ft. cl. in front of meter.
4. * Sealable Stainless Steel enclosure 6"Dx10"Wx12"H.



FRONT ELEVATION SIDE ELEVATION

METER PEDESTAL FOR UNDERGROUND SERVICE DETAIL

Not to scale

ORIGINAL PLAN	SURVEY PLOTTED BY _____ DATE _____
NOTE BOOK	DRAWN BY <u>B. Atri</u> <u>7/7/95</u>
<u>Talrubu</u>	TRACED BY _____
<u>Kaifitsleg</u>	DESIGNED BY <u>G. Kakeli</u>
<u>N.</u>	QUANTITIES BY _____
	CHECKED BY _____

STATE OF HAWAII
DEPARTMENT OF TRANSPORTATION
HIGHWAYS DIVISION

TRAFFIC SIGNAL LEGEND
DETAILS AND NOTES

KALANIANA'OLE HIGHWAY
Intersection Improvements at Kealahou Street
Fed. Aid Project No. STP-072-1(42)

Scale: As shown Date: Sept., 1995

SHEET No. **TS-1** OF **4** SHEETS

