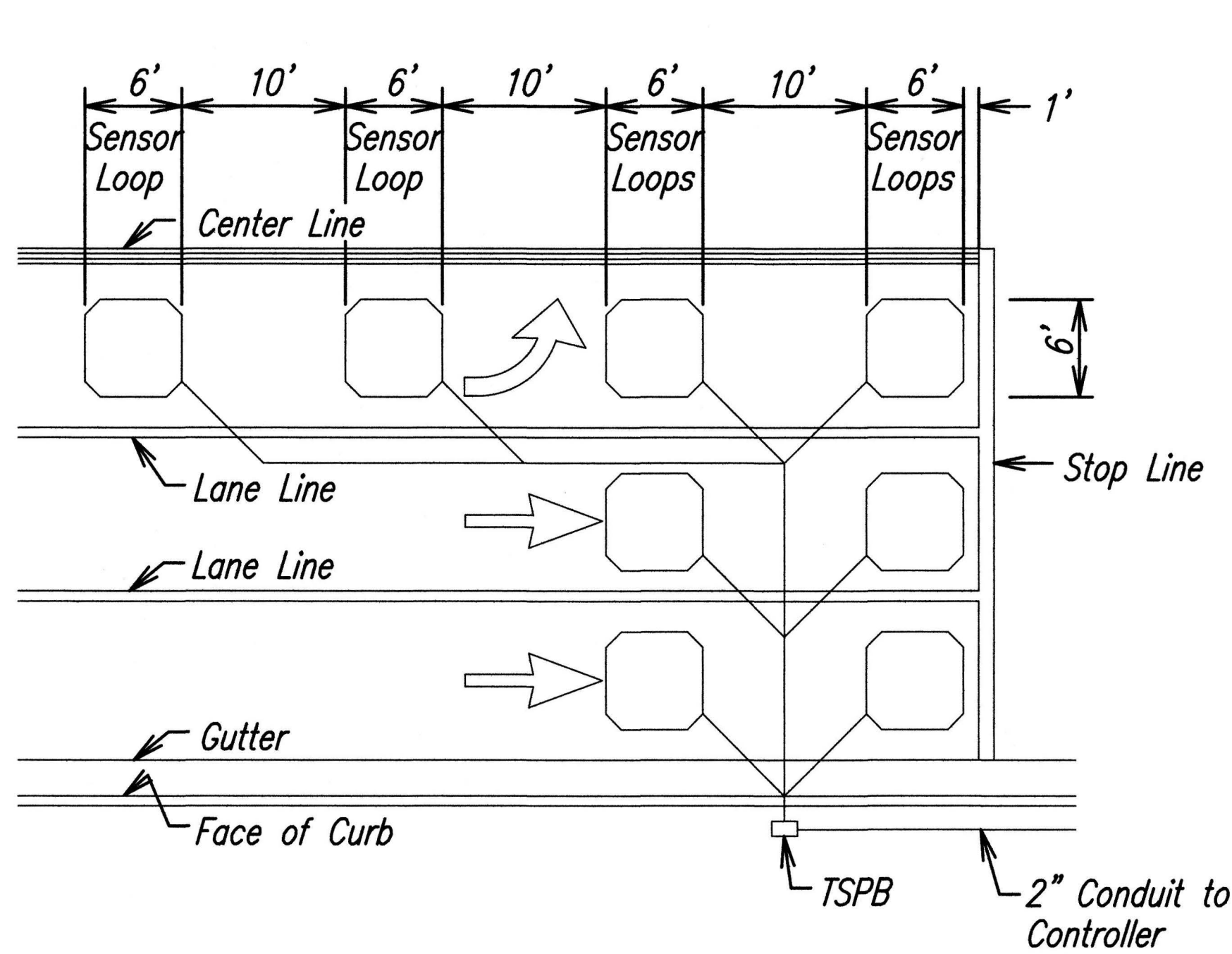


FED. ROAD DIST. NO.	STATE	PROJ. NO.	FISCAL YEAR	SHEET NO.	TOTAL SHEETS
HAWAII	HAW.	72C-01-13	2017	16	21

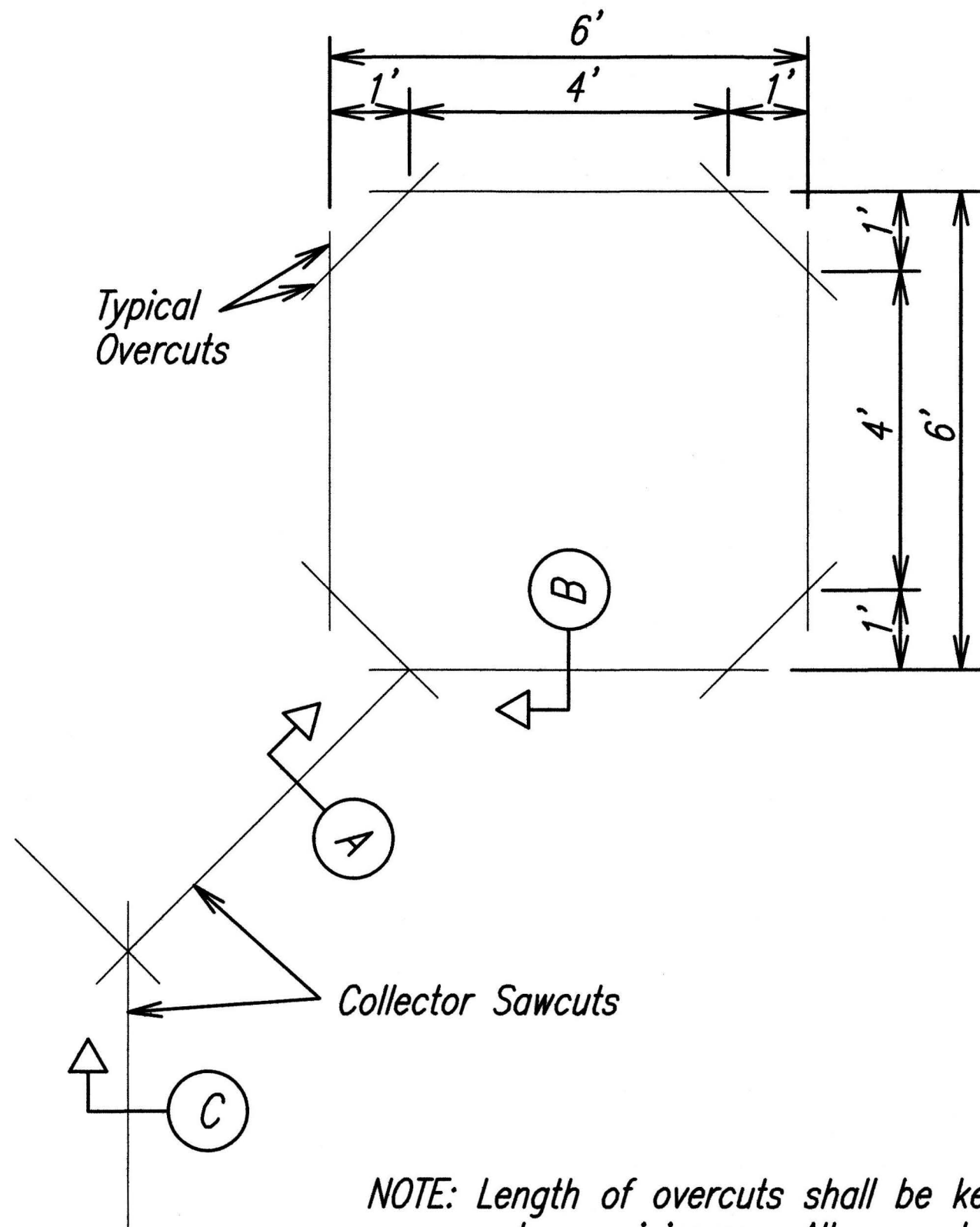


NOTES:

1. Center sensor loops in lanes.
2. Collector cables shall be twisted 2 turns per foot.
3. Number of loops and locations vary. See project plans.
4. Number and locations of collector sawcuts may be varied in the field to suit.

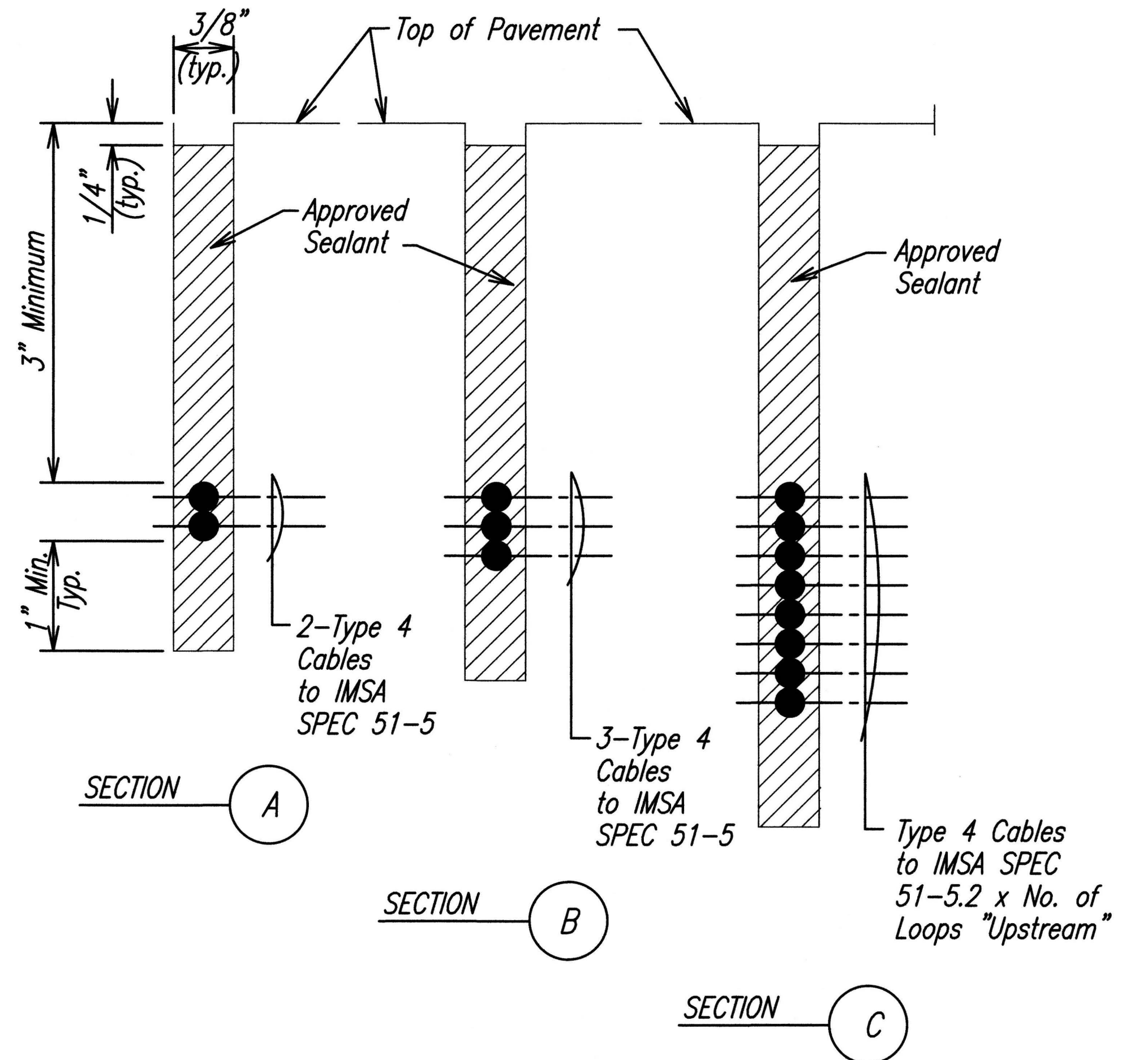
TYPICAL SENSOR LOOP LAYOUT

Not to Scale



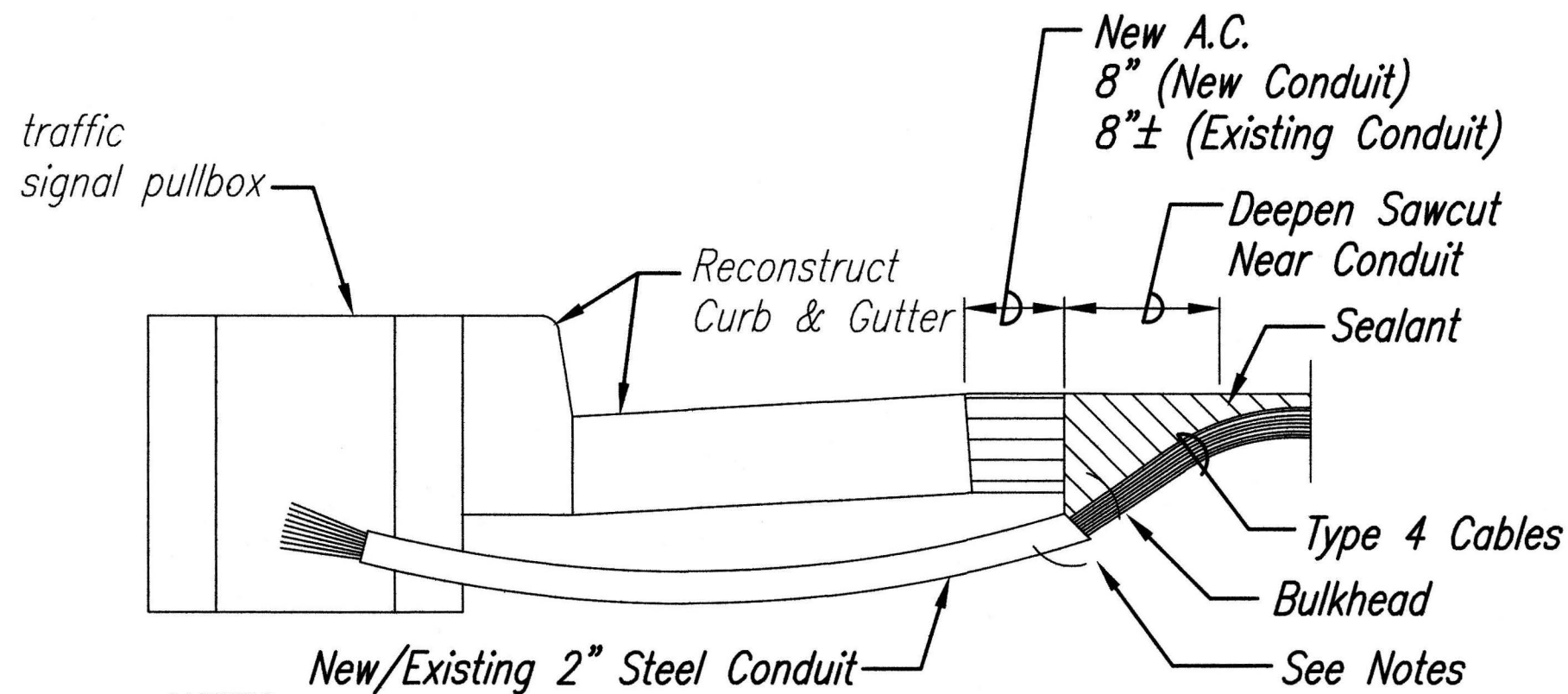
TYPICAL SENSOR LOOP SAWCUT DETAIL

Not to Scale



TYPICAL SECTION THROUGH SENSOR LOOP

Not to Scale

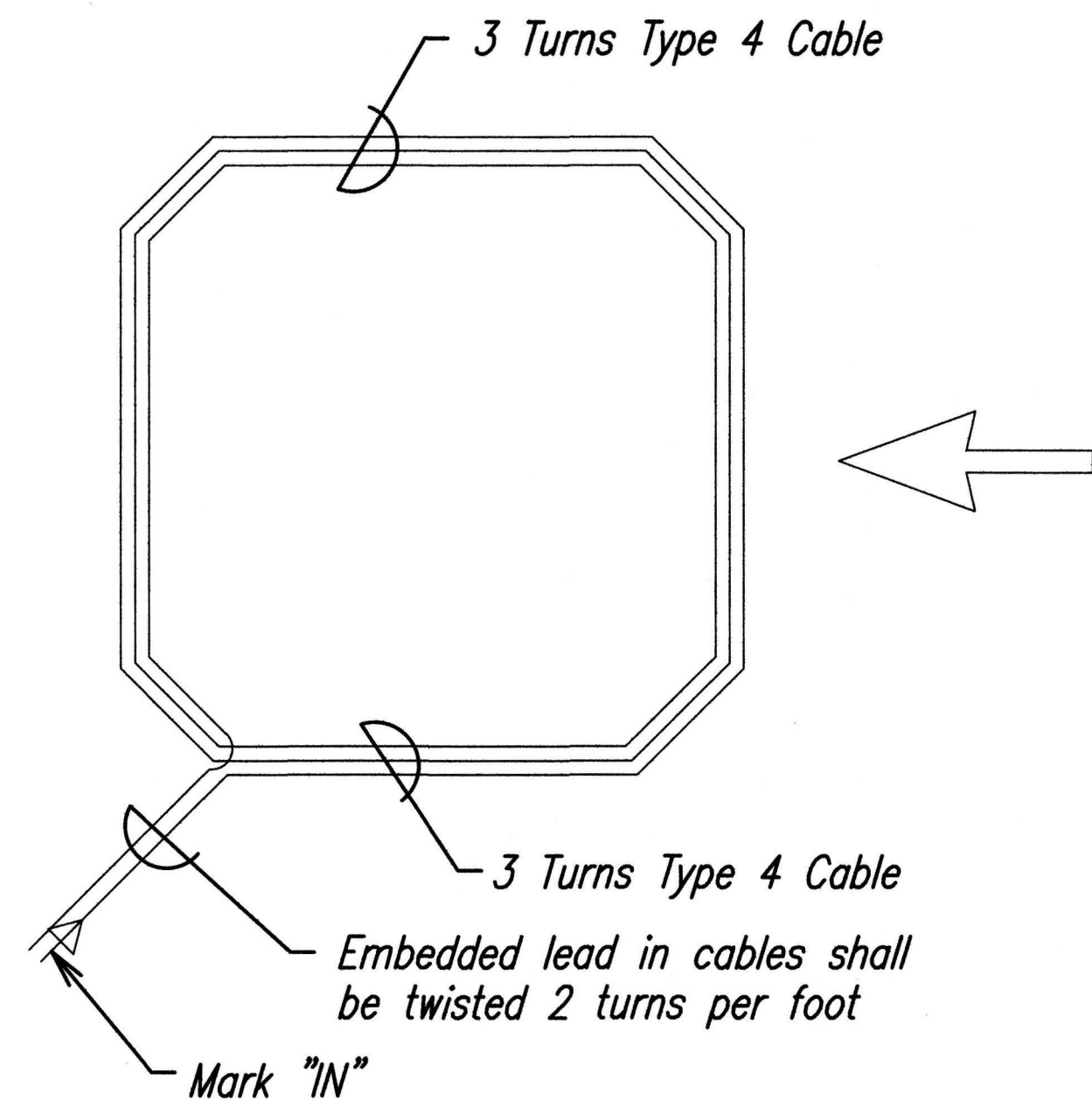


NOTES:

1. Seal Roadway End Of Conduit After Installation Of Conductors.
2. Install Bulkhead Across Conduit Trench.
3. Place Approved Sealant In Sawcut.
4. Backfill Over Conduit With New A.C.
5. Reconstruct Curb & Gutter As Required.

SENSOR LOOP INSTALLATION AT
EDGE OF ROADWAY

Not to Scale



TYPICAL SENSOR LOOP WIRING DIAGRAM

Not to Scale

DATE	_____
DESIGNED BY	_____
CHECKED BY	_____
NO.	_____



LICENSE EXPIRES 4/30/18
THIS WORK WAS PREPARED BY
ME OR UNDER MY SUPERVISION
AND CONSTRUCTION OF THIS
PROJECT WILL BE UNDER MY
OBSERVATION.

[Signature]

STATE OF HAWAII
DEPARTMENT OF TRANSPORTATION
HIGHWAYS DIVISION

TRAFFIC LOOP DETECTOR DETAILS
KALANIANA'OLE HIGHWAY
DRAINAGE IMPROVEMENTS
Vicinity of Waiupe Place
Project No. 72C-01-13

Date: November 2016
SHEET No. 3 OF 3 SHEETS