

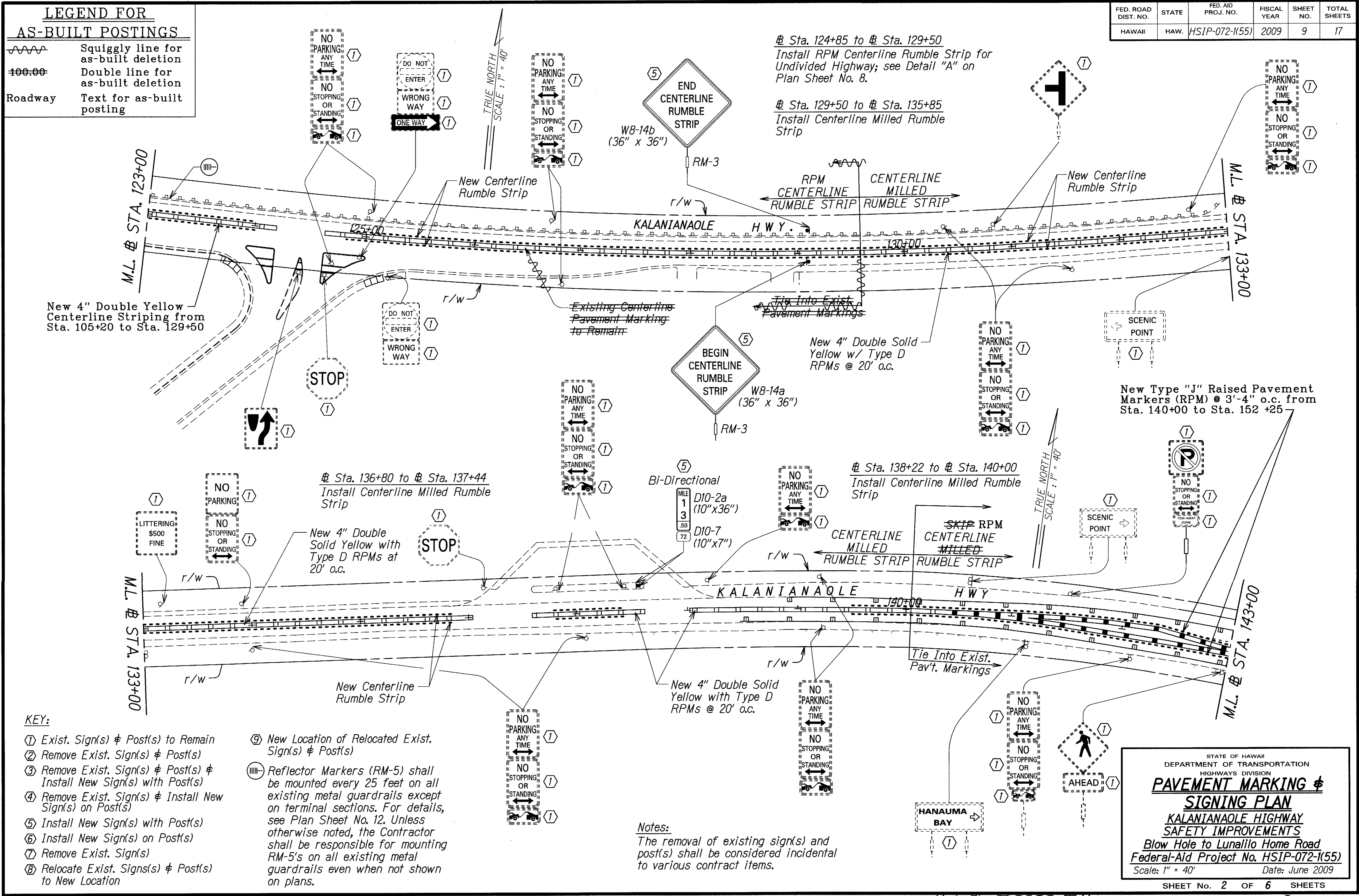
FED. ROAD DIST. NO.	STATE	FED. AID PROJ. NO.	FISCAL YEAR	SHEET NO.	TOTAL SHEETS
HAWAII	HAW.	HSIP-072-1(55)	2009	9	17

LEGEND FOR AS-BUILT POSTINGS

~~~~~ Squiggly line for as-built deletion

==== Double line for as-built deletion

Roadway Text for as-built posting



- KEY:**
- ① Exist. Sign(s) & Post(s) to Remain
  - ② Remove Exist. Sign(s) & Post(s)
  - ③ Remove Exist. Sign(s) & Post(s) & Install New Sign(s) with Post(s)
  - ④ Remove Exist. Sign(s) & Install New Sign(s) on Post(s)
  - ⑤ Install New Sign(s) with Post(s)
  - ⑥ Install New Sign(s) on Post(s)
  - ⑦ Remove Exist. Sign(s)
  - ⑧ Relocate Exist. Sign(s) & Post(s) to New Location
  - ⑨ New Location of Relocated Exist. Sign(s) & Post(s)
  - Ⓜ Reflector Markers (RM-5) shall be mounted every 25 feet on all existing metal guardrails except on terminal sections. For details, see Plan Sheet No. 12. Unless otherwise noted, the Contractor shall be responsible for mounting RM-5's on all existing metal guardrails even when not shown on plans.

**Notes:**  
The removal of existing sign(s) and post(s) shall be considered incidental to various contract items.

STATE OF HAWAII  
DEPARTMENT OF TRANSPORTATION  
HIGHWAYS DIVISION

**PAVEMENT MARKING & SIGNING PLAN**

**KALANIANA'OLE HIGHWAY SAFETY IMPROVEMENTS**

Blow Hole to Lunalilo Home Road  
Federal-Aid Project No. HSIP-072-1(55)

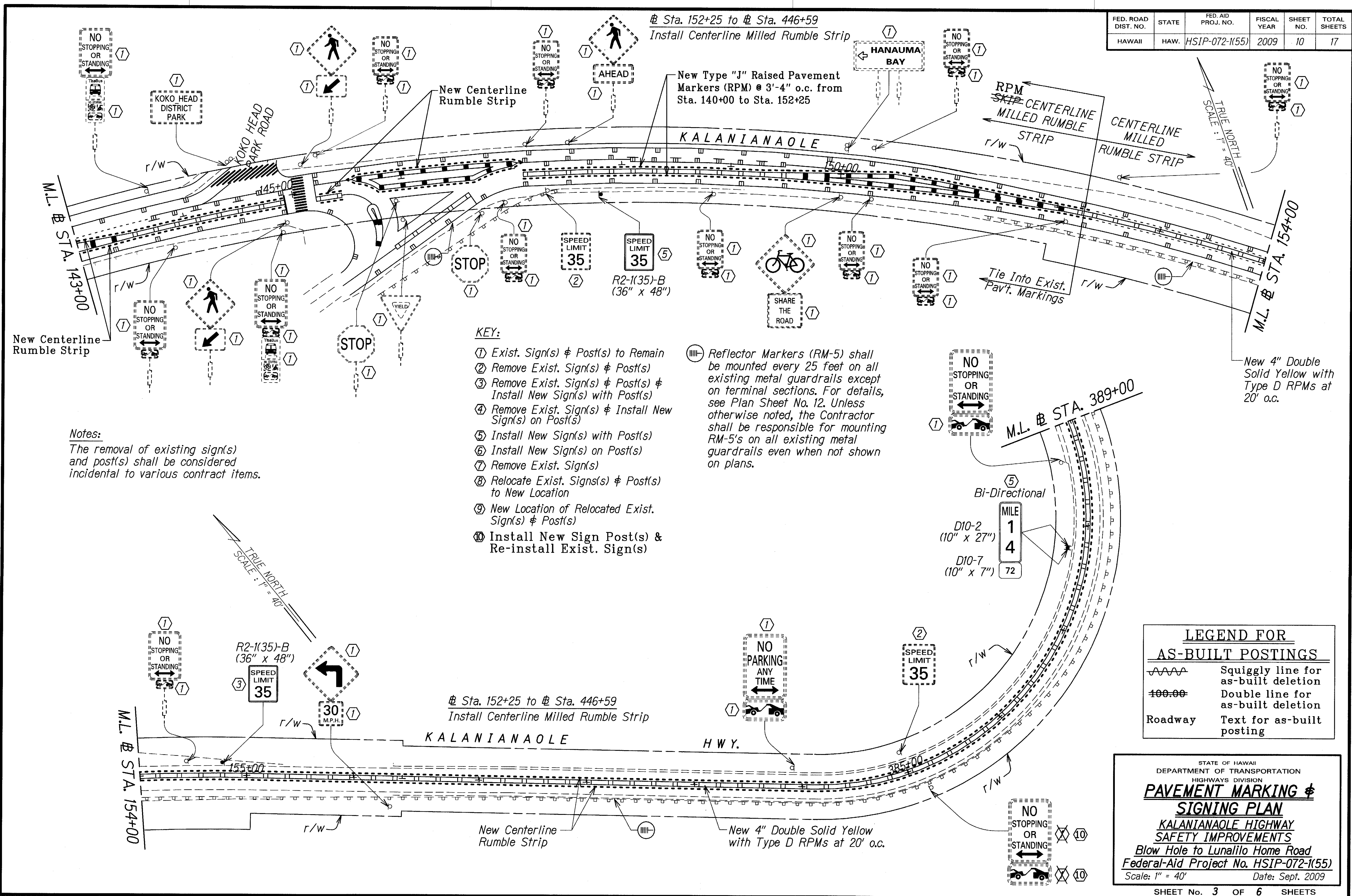
Scale: 1" = 40' Date: June 2009

SHEET No. 2 OF 6 SHEETS

|                   |      |
|-------------------|------|
| SURVEY PLOTTED BY | DATE |
| DESIGNED BY       |      |
| DESIGNED BY       |      |
| QUANTITIES BY     |      |
| CHECKED BY        |      |
| ORIGINAL PLAN     |      |
| NOTE BOOK         |      |
| QUANTITIES BY     |      |
| CHECKED BY        |      |

"AS-BUILT"

| FED. ROAD DIST. NO. | STATE | FED. AID PROJ. NO. | FISCAL YEAR | SHEET NO. | TOTAL SHEETS |
|---------------------|-------|--------------------|-------------|-----------|--------------|
| HAWAII              | HAW.  | HSIP-072-1(55)     | 2009        | 10        | 17           |



**Notes:**  
The removal of existing sign(s) and post(s) shall be considered incidental to various contract items.

**KEY:**

- ① Exist. Sign(s) & Post(s) to Remain
  - ② Remove Exist. Sign(s) & Post(s)
  - ③ Remove Exist. Sign(s) & Post(s) & Install New Sign(s) with Post(s)
  - ④ Remove Exist. Sign(s) & Install New Sign(s) on Post(s)
  - ⑤ Install New Sign(s) with Post(s)
  - ⑥ Install New Sign(s) on Post(s)
  - ⑦ Remove Exist. Sign(s)
  - ⑧ Relocate Exist. Sign(s) & Post(s) to New Location
  - ⑨ New Location of Relocated Exist. Sign(s) & Post(s)
  - ⑩ Install New Sign Post(s) & Re-install Exist. Sign(s)
- Ⓜ Reflector Markers (RM-5) shall be mounted every 25 feet on all existing metal guardrails except on terminal sections. For details, see Plan Sheet No. 12. Unless otherwise noted, the Contractor shall be responsible for mounting RM-5's on all existing metal guardrails even when not shown on plans.

**LEGEND FOR AS-BUILT POSTINGS**

|  |                                     |
|--|-------------------------------------|
|  | Squiggly line for as-built deletion |
|  | Double line for as-built deletion   |
|  | Text for as-built posting           |

STATE OF HAWAII  
DEPARTMENT OF TRANSPORTATION  
HIGHWAYS DIVISION

**PAVEMENT MARKING & SIGNING PLAN**

**KALANIANA'OLE HIGHWAY SAFETY IMPROVEMENTS**

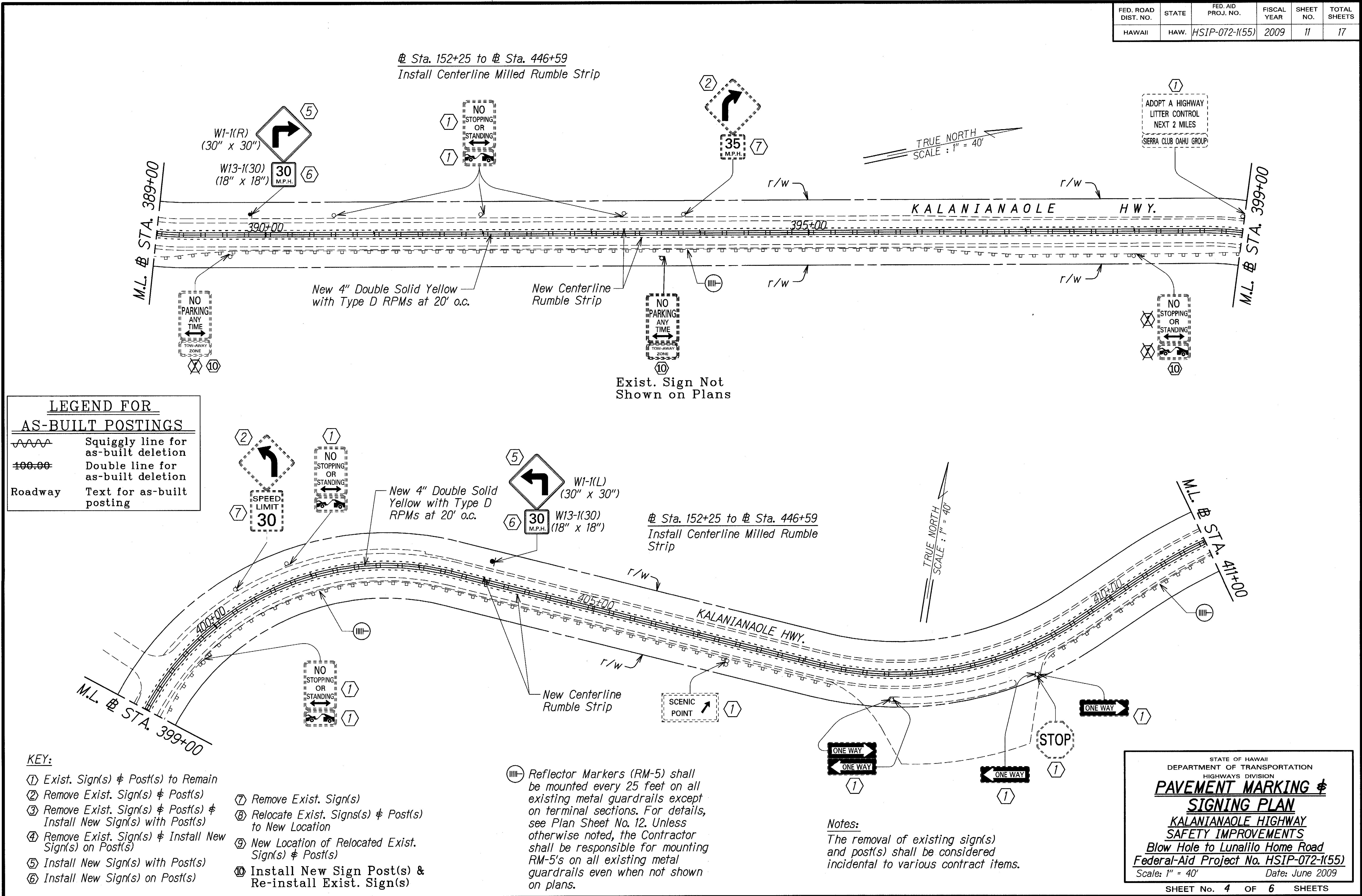
Blow Hole to Lunalilo Home Road  
Federal-Aid Project No. HSIP-072-1(55)  
Scale: 1" = 40' Date: Sept. 2009

SHEET No. 3 OF 6 SHEETS

|             |      |
|-------------|------|
| DESIGNED BY | DATE |
| DRAWN BY    |      |
| CHECKED BY  |      |
| IN CHARGE   |      |
| APPROVED BY |      |

"AS-BUILT"

| FED. ROAD DIST. NO. | STATE | FED. AID PROJ. NO. | FISCAL YEAR | SHEET NO. | TOTAL SHEETS |
|---------------------|-------|--------------------|-------------|-----------|--------------|
| HAWAII              | HAW.  | HSIP-072-1(55)     | 2009        | 11        | 17           |



**LEGEND FOR AS-BUILT POSTINGS**

|         |                                     |
|---------|-------------------------------------|
|         | Squiggly line for as-built deletion |
|         | Double line for as-built deletion   |
| Roadway | Text for as-built posting           |

- KEY:**
- ① Exist. Sign(s) & Post(s) to Remain
  - ② Remove Exist. Sign(s) & Post(s)
  - ③ Remove Exist. Sign(s) & Post(s) & Install New Sign(s) with Post(s)
  - ④ Remove Exist. Sign(s) & Install New Sign(s) on Post(s)
  - ⑤ Install New Sign(s) with Post(s)
  - ⑥ Install New Sign(s) on Post(s)
  - ⑦ Remove Exist. Sign(s)
  - ⑧ Relocate Exist. Sign(s) & Post(s) to New Location
  - ⑨ New Location of Relocated Exist. Sign(s) & Post(s)
  - ⑩ Install New Sign Post(s) & Re-install Exist. Sign(s)

Ⓜ— Reflector Markers (RM-5) shall be mounted every 25 feet on all existing metal guardrails except on terminal sections. For details, see Plan Sheet No. 12. Unless otherwise noted, the Contractor shall be responsible for mounting RM-5's on all existing metal guardrails even when not shown on plans.

**Notes:**  
The removal of existing sign(s) and post(s) shall be considered incidental to various contract items.

STATE OF HAWAII  
DEPARTMENT OF TRANSPORTATION  
HIGHWAYS DIVISION

**PAVEMENT MARKING & SIGNING PLAN**

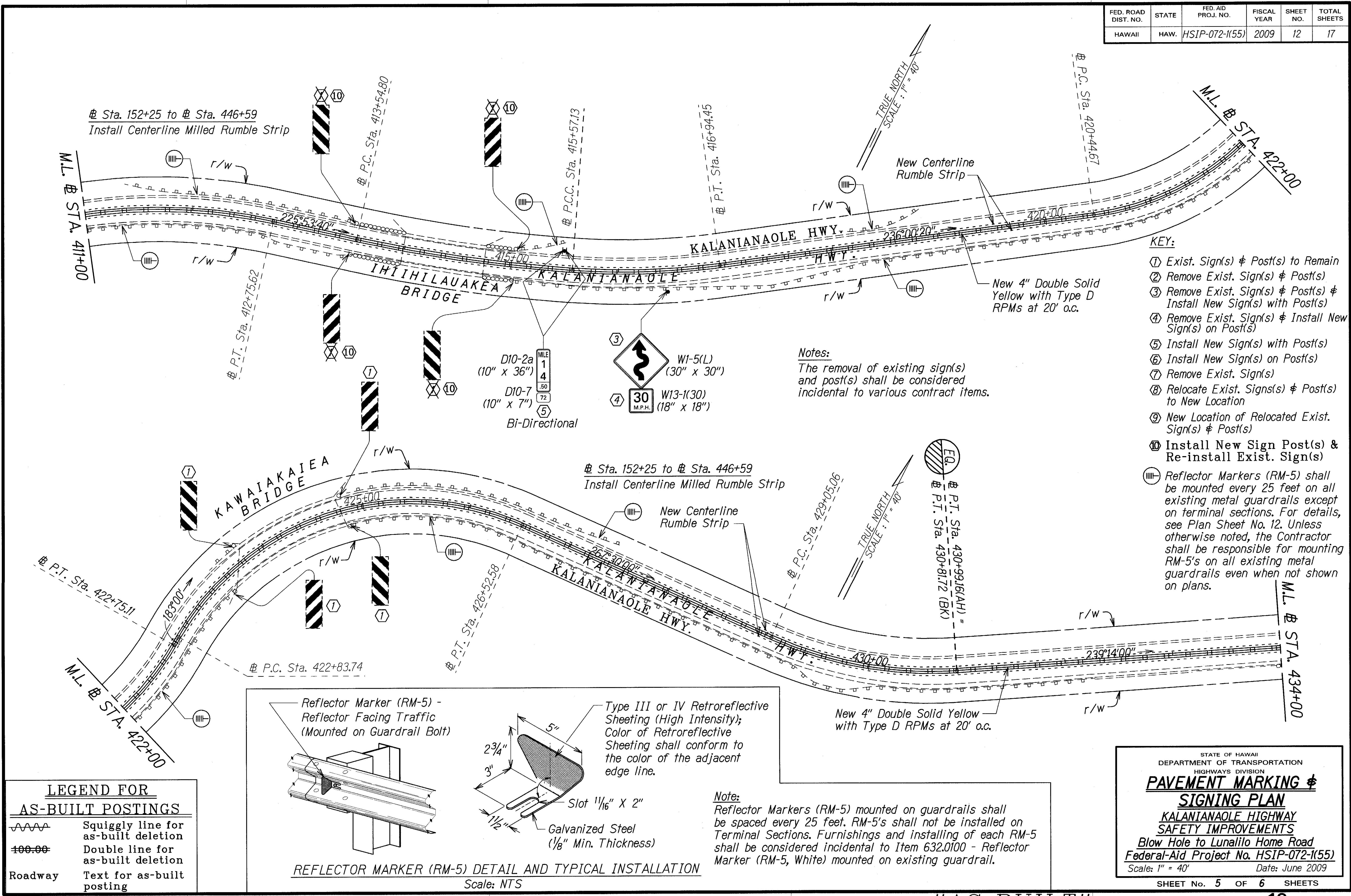
KALANIANA'OLE HIGHWAY  
SAFETY IMPROVEMENTS  
Blow Hole to Lunaliio Home Road  
Federal-Aid Project No. HSIP-072-1(55)  
Scale: 1" = 40' Date: June 2009

SHEET No. 4 OF 6 SHEETS

|             |       |
|-------------|-------|
| DATE        | _____ |
| DESIGNED BY | _____ |
| CHECKED BY  | _____ |
| DATE        | _____ |
| DESIGNED BY | _____ |
| CHECKED BY  | _____ |

"AS-BUILT"

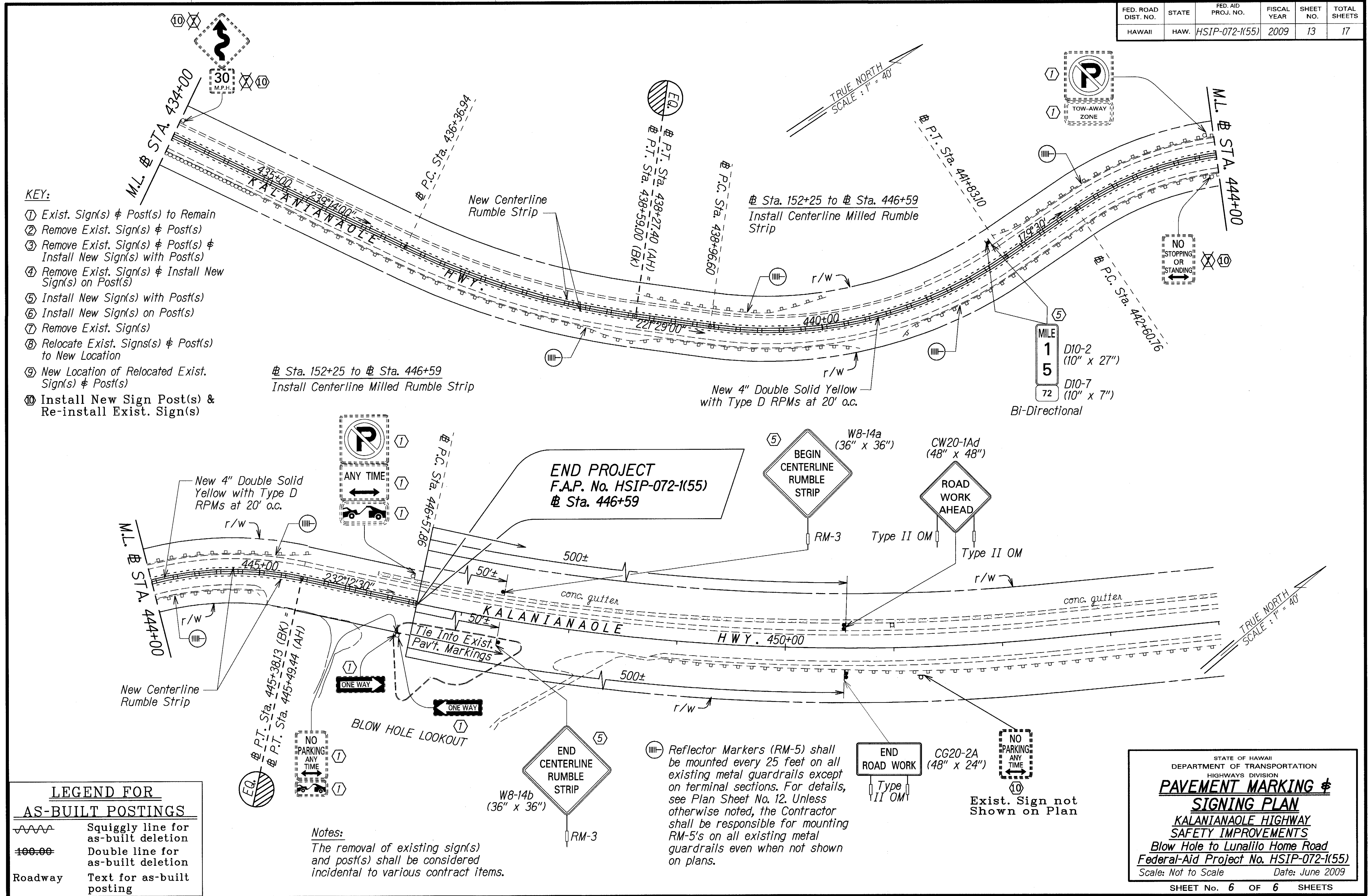
| FED. ROAD DIST. NO. | STATE | FED. AID PROJ. NO. | FISCAL YEAR | SHEET NO. | TOTAL SHEETS |
|---------------------|-------|--------------------|-------------|-----------|--------------|
| HAWAII              | HAW.  | HSIP-072-1(55)     | 2009        | 12        | 17           |



|      |                   |
|------|-------------------|
| DATE | REVIEW PLANNED BY |
|      | TRACED BY         |
|      | BOOK DESIGNED BY  |
|      | NOTED BY          |
|      | CHECKED BY        |
|      | DATE              |

| FED. ROAD DIST. NO. | STATE | FED. AID PROJ. NO. | FISCAL YEAR | SHEET NO. | TOTAL SHEETS |
|---------------------|-------|--------------------|-------------|-----------|--------------|
| HAWAII              | HAW.  | HSIP-072-1(55)     | 2009        | 13        | 17           |

- KEY:**
- ① Exist. Sign(s) & Post(s) to Remain
  - ② Remove Exist. Sign(s) & Post(s)
  - ③ Remove Exist. Sign(s) & Post(s) & Install New Sign(s) with Post(s)
  - ④ Remove Exist. Sign(s) & Install New Sign(s) on Post(s)
  - ⑤ Install New Sign(s) with Post(s)
  - ⑥ Install New Sign(s) on Post(s)
  - ⑦ Remove Exist. Sign(s)
  - ⑧ Relocate Exist. Sign(s) & Post(s) to New Location
  - ⑨ New Location of Relocated Exist. Sign(s) & Post(s)
  - ⑩ Install New Sign Post(s) & Re-install Exist. Sign(s)



**LEGEND FOR AS-BUILT POSTINGS**

|         |                                     |
|---------|-------------------------------------|
|         | Squiggly line for as-built deletion |
|         | Double line for as-built deletion   |
| Roadway | Text for as-built posting           |

**Notes:**  
The removal of existing sign(s) and post(s) shall be considered incidental to various contract items.

Ⓜ Reflector Markers (RM-5) shall be mounted every 25 feet on all existing metal guardrails except on terminal sections. For details, see Plan Sheet No. 12. Unless otherwise noted, the Contractor shall be responsible for mounting RM-5's on all existing metal guardrails even when not shown on plans.

STATE OF HAWAII  
DEPARTMENT OF TRANSPORTATION  
HIGHWAYS DIVISION

**PAVEMENT MARKING & SIGNING PLAN**

KALANIANA'OLE HIGHWAY  
SAFETY IMPROVEMENTS  
Blow Hole to Lunalilo Home Road  
Federal-Aid Project No. HSIP-072-1(55)

Scale: Not to Scale Date: June 2009

SHEET No. 6 OF 6 SHEETS

"AS-BUILT"