

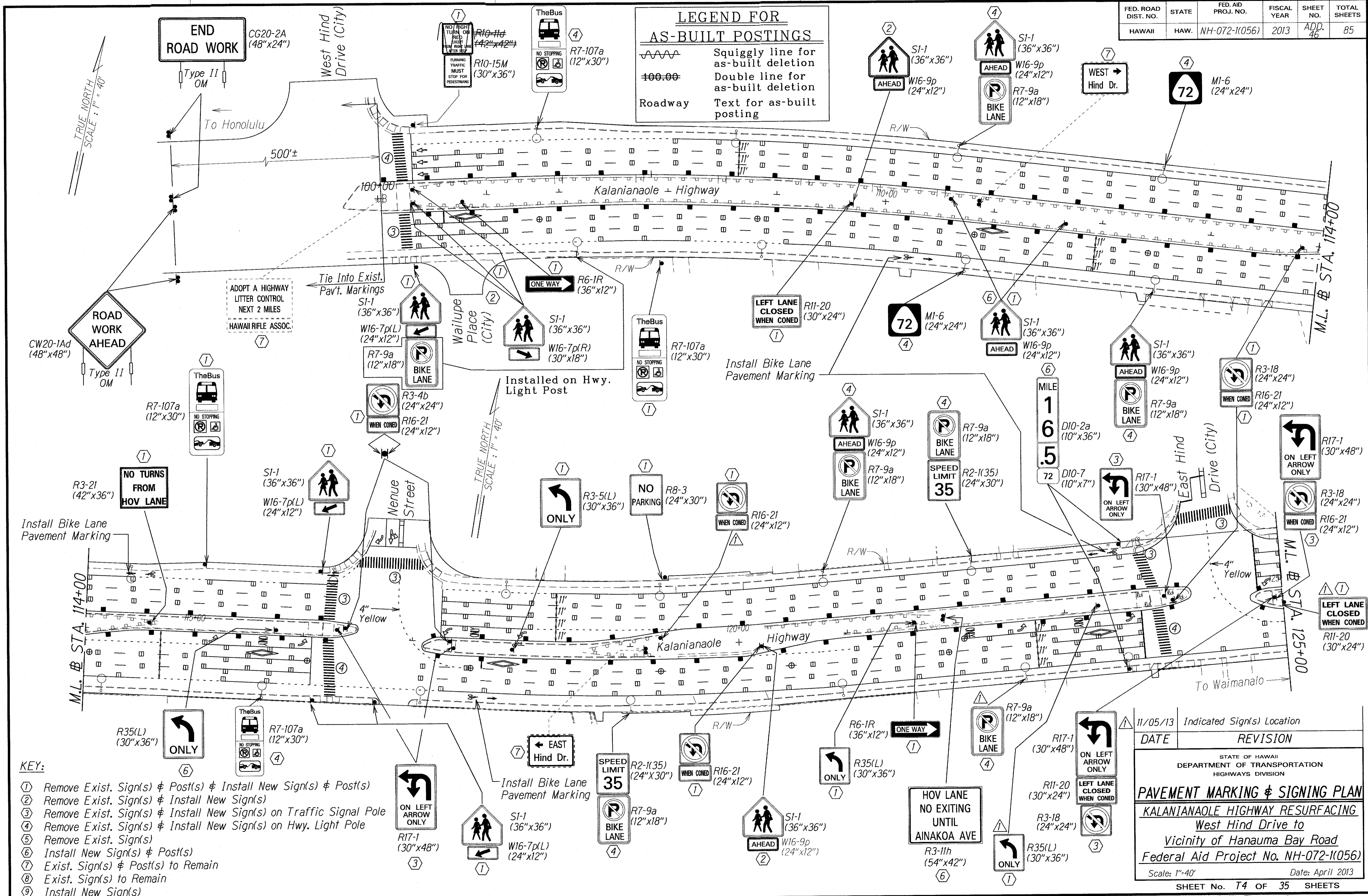
FED. ROAD DIST. NO.	STATE	FED. AID PROJ. NO.	FISCAL YEAR	SHEET NO.	TOTAL SHEETS
HAWAII	HAW.	NH-072-1(056)	2013	ADD. 46	85

LEGEND FOR AS-BUILT POSTINGS

~~~~~ Squiggly line for as-built deletion

==00== Double line for as-built deletion

Roadway Text for as-built posting



- KEY:**
- ① Remove Exist. Sign(s) & Post(s) & Install New Sign(s) & Post(s)
  - ② Remove Exist. Sign(s) & Install New Sign(s)
  - ③ Remove Exist. Sign(s) & Install New Sign(s) on Traffic Signal Pole
  - ④ Remove Exist. Sign(s) & Install New Sign(s) on Hwy. Light Pole
  - ⑤ Remove Exist. Sign(s)
  - ⑥ Install New Sign(s) & Post(s)
  - ⑦ Exist. Sign(s) & Post(s) to Remain
  - ⑧ Exist. Sign(s) to Remain
  - ⑨ Install New Sign(s)

| DATE     | REVISION                   |
|----------|----------------------------|
| 11/05/13 | Indicated Sign(s) Location |

STATE OF HAWAII  
DEPARTMENT OF TRANSPORTATION  
HIGHWAYS DIVISION

**PAVEMENT MARKING & SIGNING PLAN**  
**KALANIANA'OLE HIGHWAY RESURFACING**  
Vicinity of Hanauma Bay Road  
Federal Aid Project No. NH-072-1(056)

Scale: 1"=40' Date: April 2013  
SHEET No. T4 OF 35 SHEETS

DATE: \_\_\_\_\_  
SURVEY PLOTTED BY: \_\_\_\_\_  
DESIGNED BY: \_\_\_\_\_  
CHECKED BY: \_\_\_\_\_

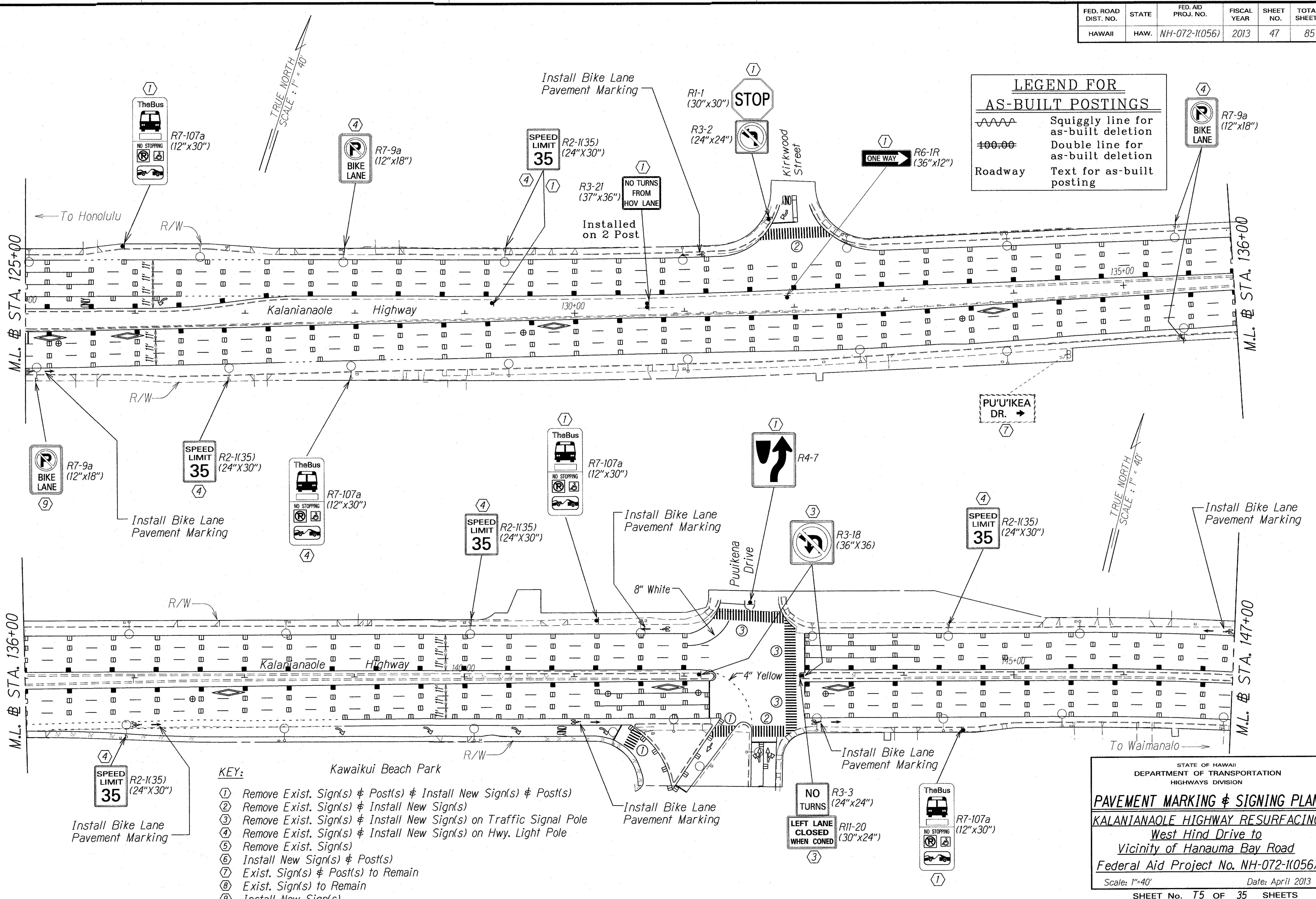
| FED. ROAD DIST. NO. | STATE | FED. AID PROJ. NO. | FISCAL YEAR | SHEET NO. | TOTAL SHEETS |
|---------------------|-------|--------------------|-------------|-----------|--------------|
| HAWAII              | HAW.  | NH-072-1(056)      | 2013        | 47        | 85           |

**LEGEND FOR AS-BUILT POSTINGS**

~~~~~ Squiggly line for as-built deletion

==00== Double line for as-built deletion

Roadway Text for as-built posting



- KEY:**
- ① Remove Exist. Sign(s) & Post(s) & Install New Sign(s) & Post(s)
 - ② Remove Exist. Sign(s) & Install New Sign(s)
 - ③ Remove Exist. Sign(s) & Install New Sign(s) on Traffic Signal Pole
 - ④ Remove Exist. Sign(s) & Install New Sign(s) on Hwy. Light Pole
 - ⑤ Remove Exist. Sign(s)
 - ⑥ Install New Sign(s) & Post(s)
 - ⑦ Exist. Sign(s) & Post(s) to Remain
 - ⑧ Exist. Sign(s) to Remain
 - ⑨ Install New Sign(s)

| | |
|-------------------|--|
| DATE | |
| SURVEY PLOTTED BY | |
| DRAWN BY | |
| TRACED BY | |
| NOTE BOOK | |
| QUANTITIES BY | |
| CHECKED BY | |
| No. | |

STATE OF HAWAII
DEPARTMENT OF TRANSPORTATION
HIGHWAYS DIVISION

PAVEMENT MARKING & SIGNING PLAN

KALANIANA'OLE HIGHWAY RESURFACING

West Hind Drive to
Vicinity of Hanauma Bay Road

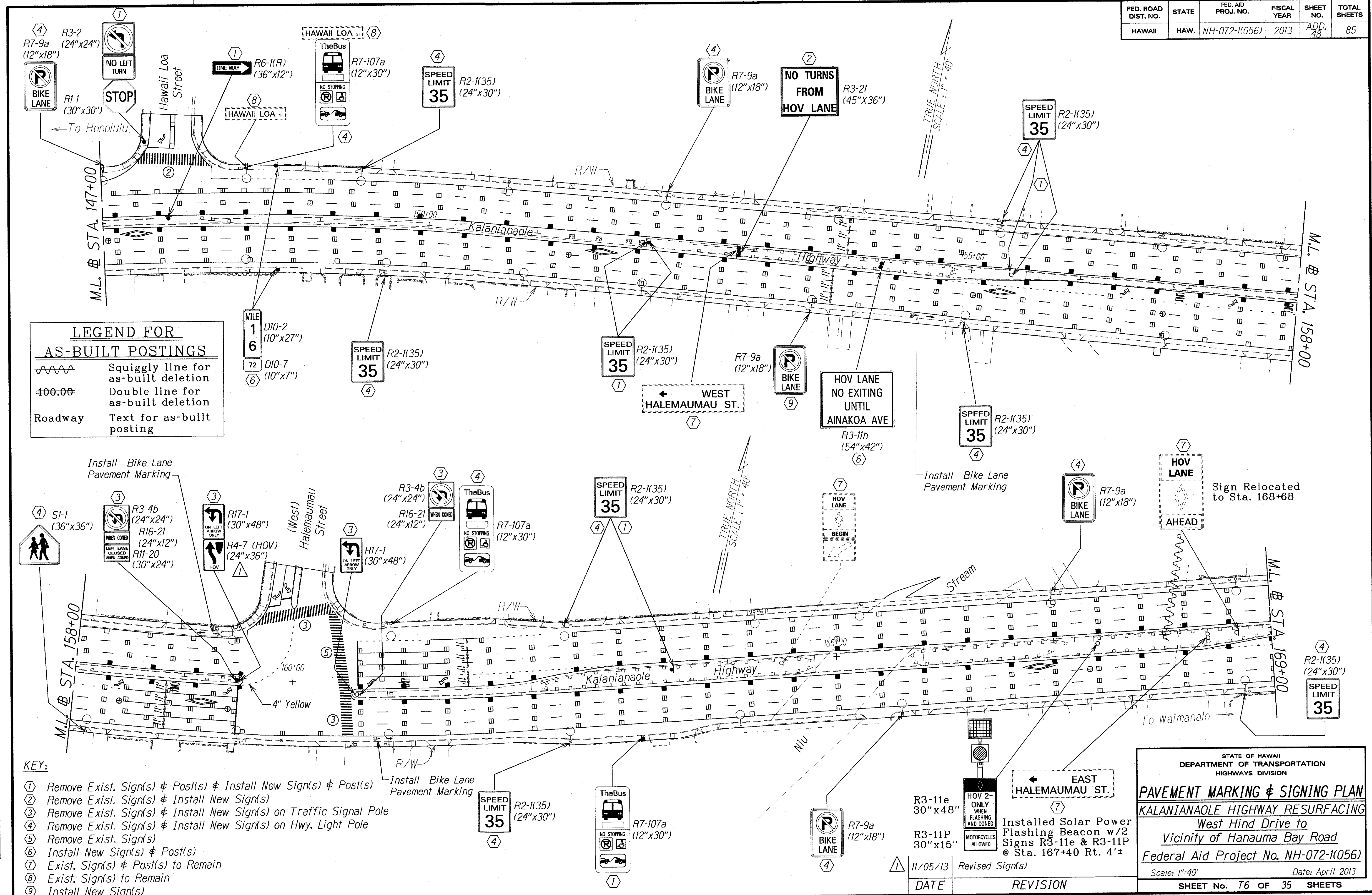
Federal Aid Project No. NH-072-1(056)

Scale: 1"=40' Date: April 2013

SHEET No. 75 OF 35 SHEETS

"AS-BUILT"

| FED. ROAD DIST. NO. | STATE | FED. AID PROJ. NO. | FISCAL YEAR | SHEET NO. | TOTAL SHEETS |
|---------------------|-------|--------------------|-------------|-----------|--------------|
| HAWAII | HAW. | NH-072-1(056) | 2013 | ADD. 48 | 85 |



LEGEND FOR AS-BUILT POSTINGS

~~~~~ Squiggly line for as-built deletion

==== Double line for as-built deletion

Roadway Text for as-built posting

MILE 1  
6 D10-2 (10"x27")  
72 D10-7 (10"x7")  
6

Install Bike Lane Pavement Marking

SI-1 (36"x36")

R3-4b (24"x24")  
R16-21 (24"x12")  
R11-20 (30"x24")

R17-1 (30"x48")  
R4-7 (HOV) (24"x36")

(West) Halemauau Street

- KEY:**
- ① Remove Exist. Sign(s) & Post(s) & Install New Sign(s) & Post(s)
  - ② Remove Exist. Sign(s) & Install New Sign(s)
  - ③ Remove Exist. Sign(s) & Install New Sign(s) on Traffic Signal Pole
  - ④ Remove Exist. Sign(s) & Install New Sign(s) on Hwy. Light Pole
  - ⑤ Remove Exist. Sign(s)
  - ⑥ Install New Sign(s) & Post(s)
  - ⑦ Exist. Sign(s) & Post(s) to Remain
  - ⑧ Exist. Sign(s) to Remain
  - ⑨ Install New Sign(s)

DATE \_\_\_\_\_

SURVEY PLOTTED BY \_\_\_\_\_

ORIGINAL PLAN \_\_\_\_\_

TRACED BY \_\_\_\_\_

NOTE BOOK \_\_\_\_\_

14/20

DESIGNED BY \_\_\_\_\_

CHECKED BY \_\_\_\_\_

N. Kailip03

STATE OF HAWAII  
DEPARTMENT OF TRANSPORTATION  
HIGHWAYS DIVISION

**PAVEMENT MARKING & SIGNING PLAN**

KALANIANA'OLE HIGHWAY RESURFACING

West Hind Drive to  
Vicinity of Hanauma Bay Road

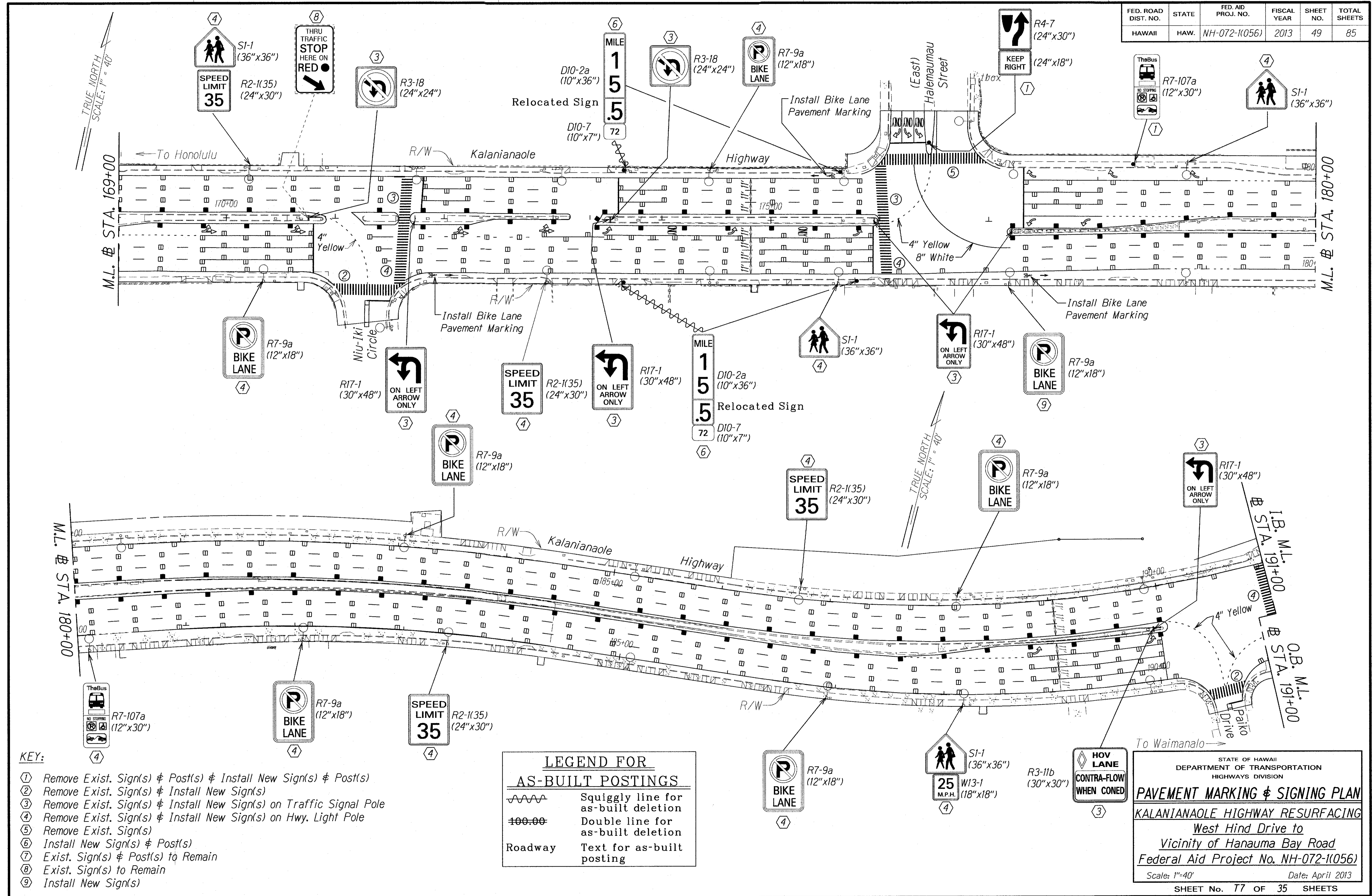
Federal Aid Project No. NH-072-1(056)

Scale: 1"=40' Date: April 2013

SHEET No. T6 OF 35 SHEETS

| DATE     | REVISION                                                                              |
|----------|---------------------------------------------------------------------------------------|
| 11/05/13 | Revised Sign(s)                                                                       |
|          | Installed Solar Power Flashing Beacon w/2 Signs R3-11e & R3-11P @ Sta. 167+40 Rt. 4'± |

| FED. ROAD DIST. NO. | STATE | FED. AID PROJ. NO. | FISCAL YEAR | SHEET NO. | TOTAL SHEETS |
|---------------------|-------|--------------------|-------------|-----------|--------------|
| HAWAII              | HAW.  | NH-072-1(056)      | 2013        | 49        | 85           |



- KEY:**
- ① Remove Exist. Sign(s) & Post(s) & Install New Sign(s) & Post(s)
  - ② Remove Exist. Sign(s) & Install New Sign(s)
  - ③ Remove Exist. Sign(s) & Install New Sign(s) on Traffic Signal Pole
  - ④ Remove Exist. Sign(s) & Install New Sign(s) on Hwy. Light Pole
  - ⑤ Remove Exist. Sign(s)
  - ⑥ Install New Sign(s) & Post(s)
  - ⑦ Exist. Sign(s) & Post(s) to Remain
  - ⑧ Exist. Sign(s) to Remain
  - ⑨ Install New Sign(s)

**LEGEND FOR AS-BUILT POSTINGS**

|         |                                     |
|---------|-------------------------------------|
|         | Squiggly line for as-built deletion |
|         | Double line for as-built deletion   |
| Roadway | Text for as-built posting           |

STATE OF HAWAII  
DEPARTMENT OF TRANSPORTATION  
HIGHWAYS DIVISION

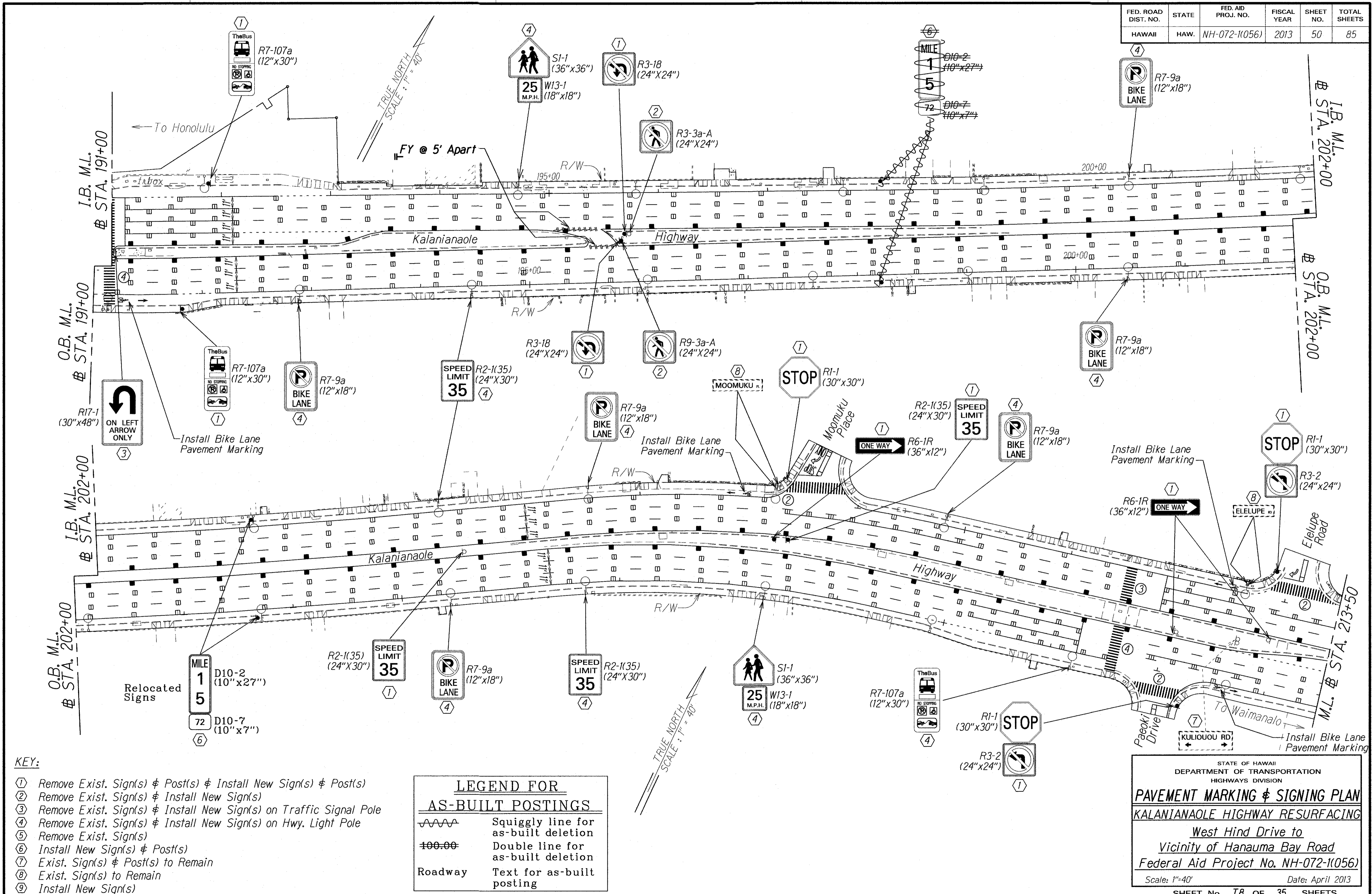
**PAVEMENT MARKING & SIGNING PLAN**  
KALANIANA'OLE HIGHWAY RESURFACING  
West Hind Drive to  
Vicinity of Hanauma Bay Road  
Federal Aid Project No. NH-072-1(056)

Scale: 1"=40' Date: April 2013  
SHEET No. 77 OF 35 SHEETS

|                       |      |
|-----------------------|------|
| SURVEY PLOTTED BY     | DATE |
| DESIGNED BY           |      |
| TRACED BY             |      |
| NOTE BOOK DESIGNED BY |      |
| QUANTITIES BY         |      |
| CHECKED BY            |      |

"AS-BUILT"

| FED. ROAD DIST. NO. | STATE | FED. AID PROJ. NO. | FISCAL YEAR | SHEET NO. | TOTAL SHEETS |
|---------------------|-------|--------------------|-------------|-----------|--------------|
| HAWAII              | HAW.  | NH-072-1(056)      | 2013        | 50        | 85           |



- KEY:**
- ① Remove Exist. Sign(s) & Post(s) & Install New Sign(s) & Post(s)
  - ② Remove Exist. Sign(s) & Install New Sign(s)
  - ③ Remove Exist. Sign(s) & Install New Sign(s) on Traffic Signal Pole
  - ④ Remove Exist. Sign(s) & Install New Sign(s) on Hwy. Light Pole
  - ⑤ Remove Exist. Sign(s)
  - ⑥ Install New Sign(s) & Post(s)
  - ⑦ Exist. Sign(s) & Post(s) to Remain
  - ⑧ Exist. Sign(s) to Remain
  - ⑨ Install New Sign(s)

**LEGEND FOR AS-BUILT POSTINGS**

|         |                                     |
|---------|-------------------------------------|
|         | Squiggly line for as-built deletion |
|         | Double line for as-built deletion   |
| Roadway | Text for as-built posting           |

|                   |      |
|-------------------|------|
| SURVEY PLOTTED BY | DATE |
| DRAWN BY          |      |
| TRACED BY         |      |
| NOTED BOOK        |      |
| QUANTITIES BY     |      |
| CHECKED BY        |      |

STATE OF HAWAII  
DEPARTMENT OF TRANSPORTATION  
HIGHWAYS DIVISION

**PAVEMENT MARKING & SIGNING PLAN**  
**KALANIANA'OLE HIGHWAY RESURFACING**

*West Hind Drive to  
Vicinity of Hanauma Bay Road*

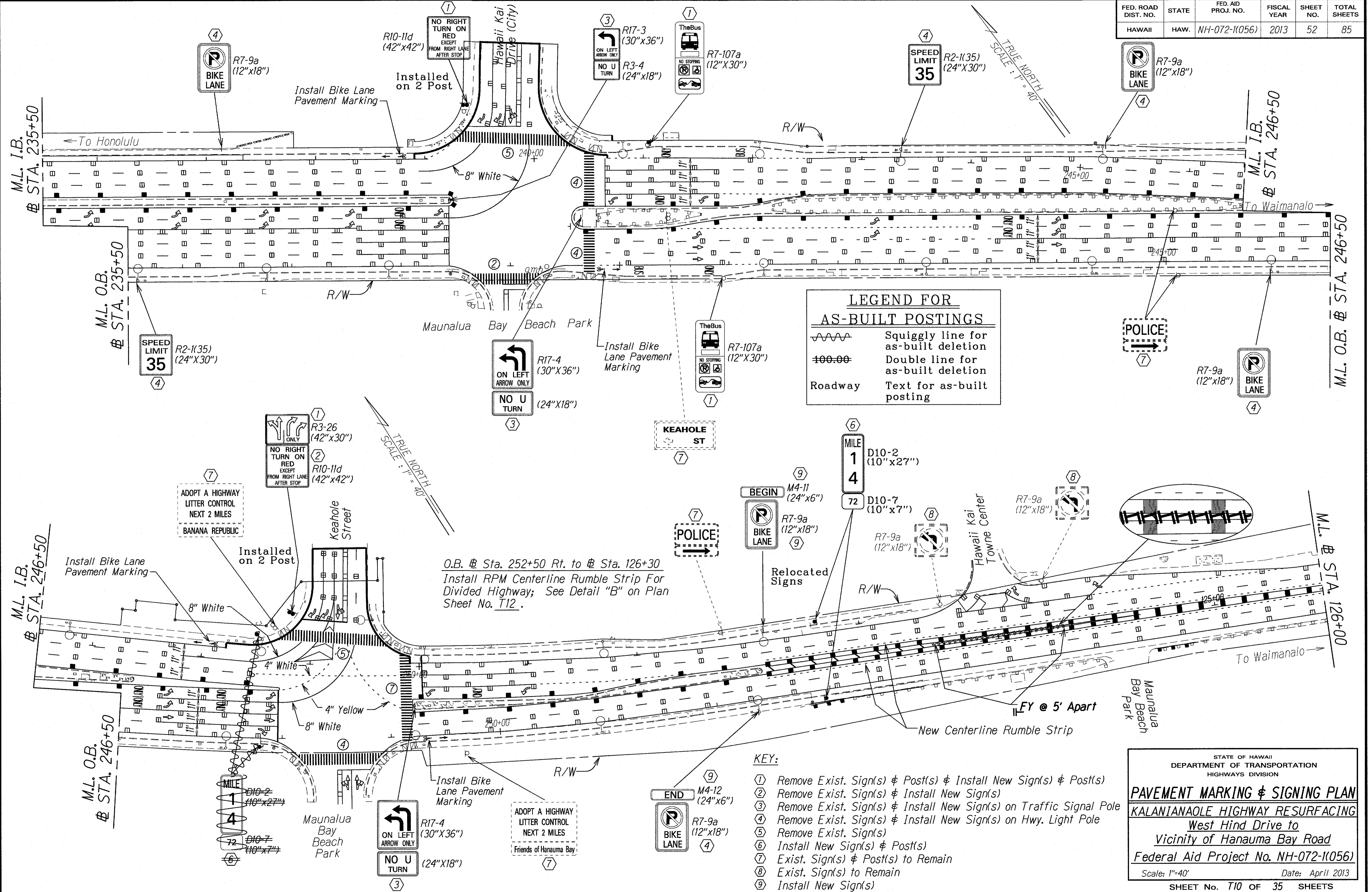
Federal Aid Project No. NH-072-1(056)

Scale: 1"=40' Date: April 2013

SHEET No. 78 OF 35 SHEETS

"AS-BUILT"

| FED. ROAD DIST. NO. | STATE | FED. AID PROJ. NO. | FISCAL YEAR | SHEET NO. | TOTAL SHEETS |
|---------------------|-------|--------------------|-------------|-----------|--------------|
| HAWAII              | HAW.  | NH-072-1(056)      | 2013        | 52        | 85           |



**LEGEND FOR AS-BUILT POSTINGS**

~~~~~ Squiggly line for as-built deletion

==00.00== Double line for as-built deletion

Roadway Text for as-built posting

- KEY:**
- ① Remove Exist. Sign(s) & Post(s) & Install New Sign(s) & Post(s)
 - ② Remove Exist. Sign(s) & Install New Sign(s)
 - ③ Remove Exist. Sign(s) & Install New Sign(s) on Traffic Signal Pole
 - ④ Remove Exist. Sign(s) & Install New Sign(s) on Hwy. Light Pole
 - ⑤ Remove Exist. Sign(s)
 - ⑥ Install New Sign(s) & Post(s)
 - ⑦ Exist. Sign(s) & Post(s) to Remain
 - ⑧ Exist. Sign(s) to Remain
 - ⑨ Install New Sign(s)

STATE OF HAWAII
DEPARTMENT OF TRANSPORTATION
HIGHWAYS DIVISION

PAVEMENT MARKING & SIGNING PLAN

KALANIANA'OLE HIGHWAY RESURFACING

West Hind Drive to
Vicinity of Hanauma Bay Road

Federal Aid Project No. NH-072-1(056)

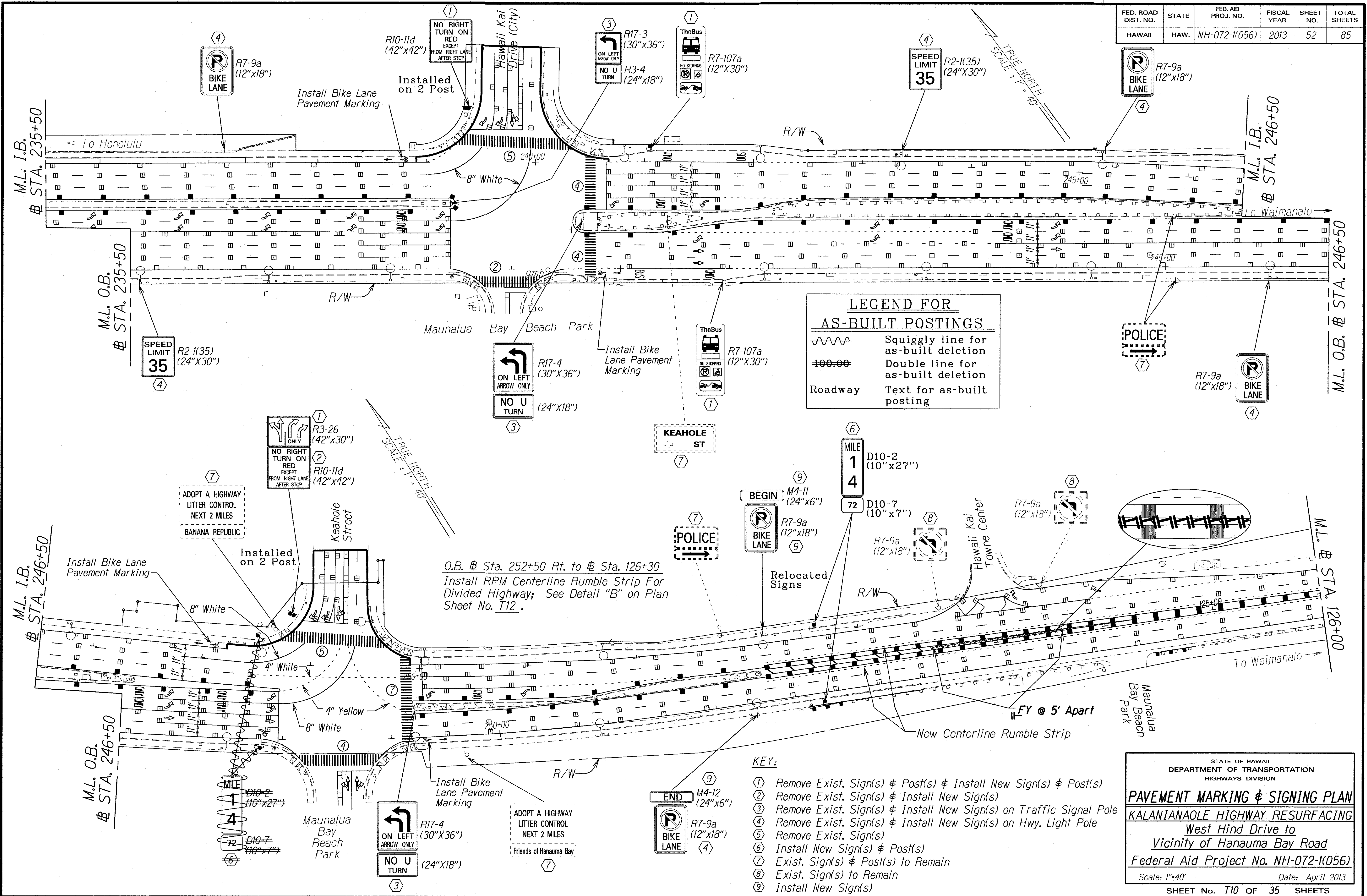
Scale: 1"=40' Date: April 2013

SHEET No. T10 OF 35 SHEETS

| | |
|-------------|------|
| DESIGNED BY | DATE |
| DRAWN BY | |
| CHECKED BY | |
| IN CHARGE | |

"AS-BUILT"

| | | | | | |
|---------------------|-------|--------------------|-------------|-----------|--------------|
| FED. ROAD DIST. NO. | STATE | FED. AID PROJ. NO. | FISCAL YEAR | SHEET NO. | TOTAL SHEETS |
| HAWAII | HAW. | NH-072-1(056) | 2013 | 52 | 85 |



LEGEND FOR AS-BUILT POSTINGS

~~~~~ Squiggly line for as-built deletion

==== Double line for as-built deletion

Roadway Text for as-built posting

- KEY:**
- ① Remove Exist. Sign(s) & Post(s) & Install New Sign(s) & Post(s)
  - ② Remove Exist. Sign(s) & Install New Sign(s)
  - ③ Remove Exist. Sign(s) & Install New Sign(s) on Traffic Signal Pole
  - ④ Remove Exist. Sign(s) & Install New Sign(s) on Hwy. Light Pole
  - ⑤ Remove Exist. Sign(s)
  - ⑥ Install New Sign(s) & Post(s)
  - ⑦ Exist. Sign(s) & Post(s) to Remain
  - ⑧ Exist. Sign(s) to Remain
  - ⑨ Install New Sign(s)

STATE OF HAWAII  
DEPARTMENT OF TRANSPORTATION  
HIGHWAYS DIVISION

**PAVEMENT MARKING & SIGNING PLAN**

**KALANIANA'OLE HIGHWAY RESURFACING**

West Hind Drive to  
Vicinity of Hanauma Bay Road

Federal Aid Project No. NH-072-1(056)

Scale: 1"=40' Date: April 2013

SHEET No. T10 OF 35 SHEETS

|                   |      |
|-------------------|------|
| SURVEY PLOTTED BY | DATE |
| DESIGNED BY       |      |
| NOTE BOOK         |      |
| QUANTITIES BY     |      |
| CHECKED BY        |      |

"AS-BUILT"





| FED. ROAD DIST. NO. | STATE | FED. AID PROJ. NO. | FISCAL YEAR | SHEET NO. | TOTAL SHEETS |
|---------------------|-------|--------------------|-------------|-----------|--------------|
| HAWAII              | HAW.  | NH-072-1(056)      | 2013        | 55        | 85           |

Sta. 114+00 to Sta. 124+00  
Install RPM centerline rumble strip for undivided highway; see Detail "A" on Plan Sheet No. T12.

**LEGEND FOR AS-BUILT POSTINGS**

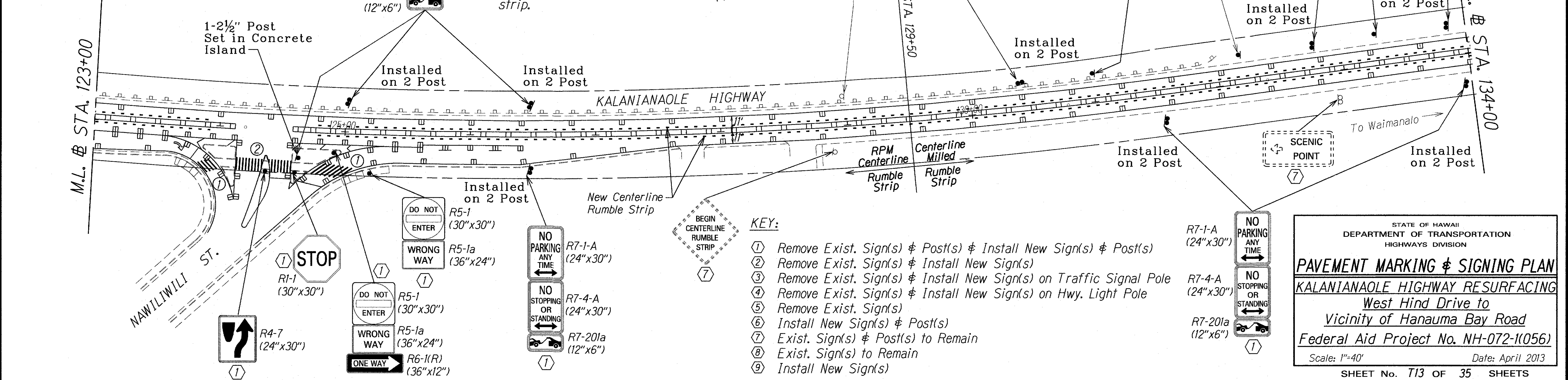
~~~~~ Squiggly line for as-built deletion

==== Double line for as-built deletion

Roadway Text for as-built posting

Sta. 124+85 to Sta. 129+50
Install RPM centerline rumble strip for undivided highway; see Detail "A" on Plan Sheet No. T12.

Sta. 129+50 to Sta. 135+92
Install Centerline Milled Rumble strip.



| | |
|-------------------|--|
| DATE | |
| SURVEY PLOTTED BY | |
| PLAN | |
| DRAWN BY | |
| TRACED BY | |
| NOTED BY | |
| QUANTITIES BY | |
| CHECKED BY | |
| ORIGINAL PLAN | |
| DATE | |

STATE OF HAWAII
DEPARTMENT OF TRANSPORTATION
HIGHWAYS DIVISION

PAVEMENT MARKING & SIGNING PLAN

KALANIANA'OLE HIGHWAY RESURFACING

West Hind Drive to
Vicinity of Hanauma Bay Road

Federal Aid Project No. NH-072-1(056)

Scale: 1"=40' Date: April 2013

SHEET No. T13 OF 35 SHEETS

"AS-BUILT"

