

INDEX TO DRAWINGS	
SHEET NO.	DESCRIPTION
1	TITLE SHEET
2	STANDARD PLANS SUMMARY
3	GENERAL NOTES AND LEGEND
4 - 6	NPDES GENERAL NOTES
7	TYPICAL SECTION
8 - 10	PAVEMENT GRADE PLAN
X	X
X	X
X	X
X	X
X	X
X	X
X	X
X	X
X	X
X	X
X	X
X	X
X	X

STATE OF HAWAII

DEPARTMENT OF TRANSPORTATION

HIGHWAYS DIVISION

HONOLULU, HAWAII

PLANS FOR

KALANIANA'OLE HIGHWAY RESURFACING

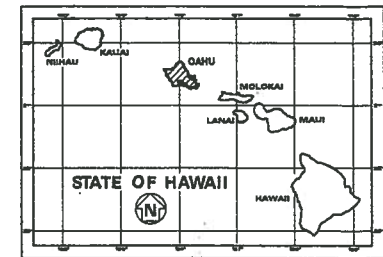
WEST HIND DRIVE TO VICINITY OF HANAUMA BAY ROAD

PROJECT NO. 72C-01-07M

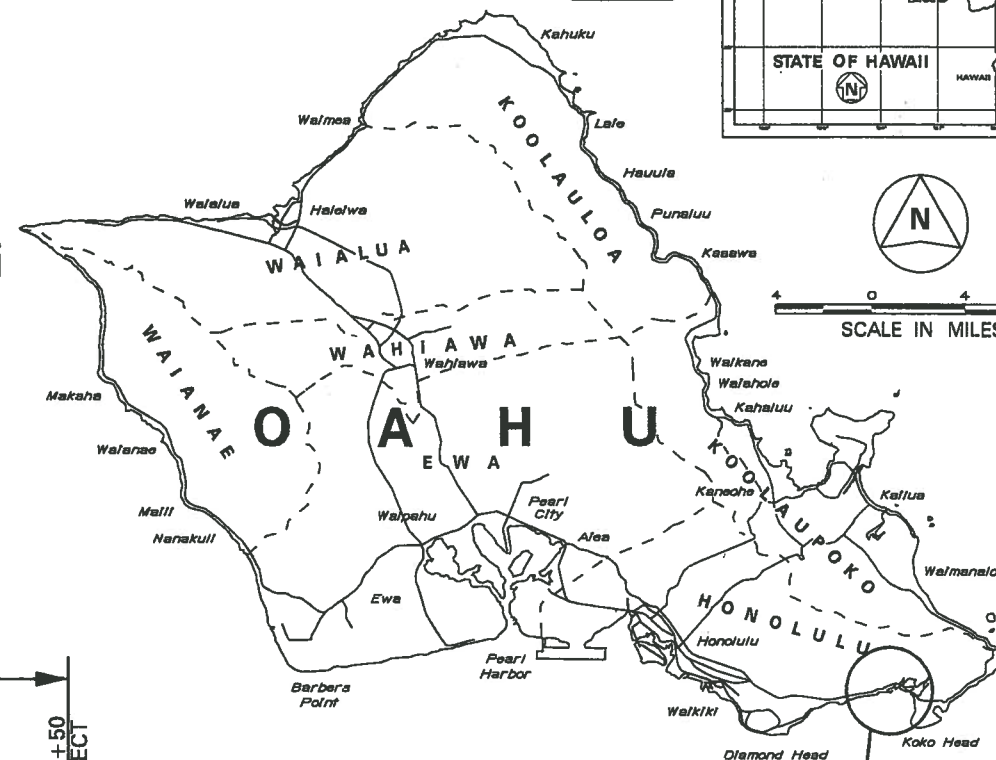
DISTRICT OF HONOLULU

ISLAND OF OAHU

FED. ROAD DIST. NO.	STATE	PROJ. NO.	FISCAL YEAR	SHEET NO.	TOTAL SHEETS
HAWAII	HAW.	72C-01-07M	2010	1	X

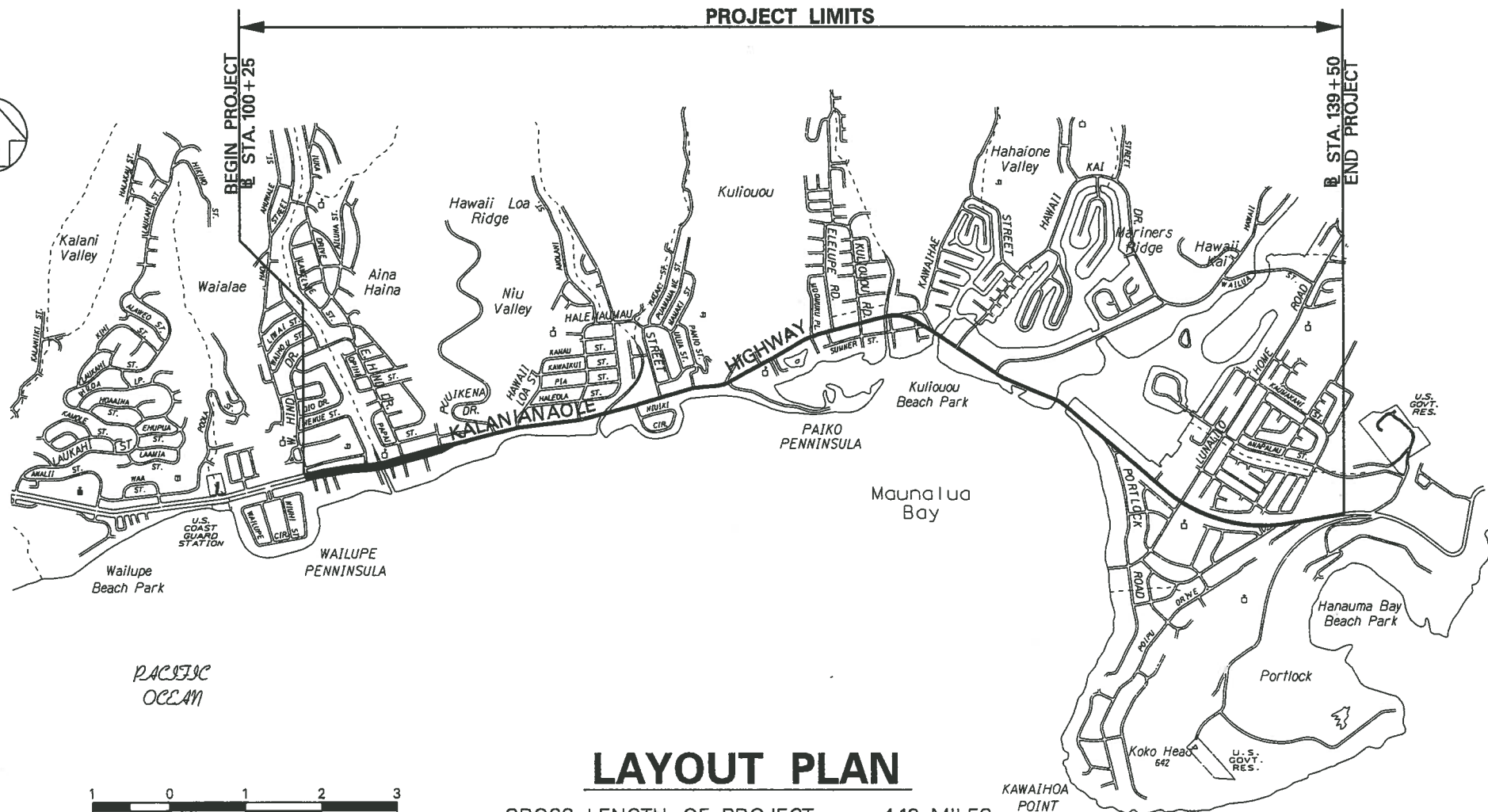


SCALE IN MILES



LOCATION OF PROJECT

MILE POST 12.60 TO MILE POST 16.82



LAYOUT PLAN

GROSS LENGTH OF PROJECT.....4.18 MILES
NET LENGTH OF PROJECT.....4.18 MILES

DEPARTMENT OF TRANSPORTATION STATE OF HAWAII	
APPROVED:	
DIR. OF TRANSPORTATION	DATE

DATE 2009
PHONE 692-7570
MANAGED BY HWY-DD
DESIGNED BY HWY-DD

GENERAL NOTES

FED. ROAD DIST. NO.	STATE	FED. AID PROJ. NO.	FISCAL YEAR	SHEET NO.	TOTAL SHEETS
HAWAII	HAW.	72C-01-07M	2007	3	0

- ORIGINAL PLAN

SURVEY PLOTTED BY

DATE

DESIGNED BY

NOTED BY

CHECKED BY

DATE

DESIGNED BY

NOTED BY

CHECKED BY

DATE
1.

The scope of work for this project consists of cold planing; AC paving; reconstruction of weakened pavement areas; installing signs, pavement markings and striping, milled rumble strips and loop detectors; adjusting manholes; replacing guardrail end treatments and bridge railing; landscaping; and traffic control.
2.

The Contractor's attention is directed to the following Sections of the Special Provisions : Subsection 107.13 - Public Convenience and Safety; Subsection 107.21 - Contractor's Responsibility For Utility Property And Services; and Section 645 -Traffic Control.
3.

At the end of each day's work, the Contractor shall remove all equipment and other obstructions to permit free and safe passage of public traffic.
4.

The existence and location of underground utilities, manholes, monuments and structures as shown on the plans are from the latest available data but the accuracy is not guaranteed. The encountering of other obstacles during the course of work is possible. The Contractor shall be held liable for any damages incurred to the existing facilities and/or improvements as a result of his operations.
5.

The exact locations and limits or areas to be filled with leveling course, reconstructed and cold planed shall be determined in the field by the Engineer.
6.

The Contractor shall notify in writing, the Oahu Transit Services, Inc. Roads Supervision Office, 811 Middle St., Hon., HI 96819 (ph. #848-4571) seven (7) days prior to any paving operations.
7.

The Contractor shall notify the Engineer in writing, two (2) weeks prior to starting paving operations.
8.

The Contractor shall remove and dispose of all existing raised pavement markers and traffic tapes prior to the overlaying of Asphalt Concrete. This work shall be considered incidental to Asphalt Concrete Pavement, Mix No. IV and will not be paid for separately.
9.

All holes, depressions and wheel ruts shall be filled and compacted with Asphalt Concrete Pavement, Mix No. V prior to resurfacing. This work will be paid for under Asphalt Concrete Pavement, Mix No. V.
10.

Smooth riding connections shall be constructed at all limits of resurfacing, including the beginning and end of project, connecting approaches, side streets and driveways as shown on the plans and/or as directed by the Engineer.
11.

Dressing of shoulder, sidewalk and bus turnout shall consist of clearing, grubbing, grading, reshaping and compacting the unpaved shoulders with suitable material as shown on the plans and/or as directed by the Engineer. This work shall be considered incidental to the various contract items.
12.

Existing drainage system will be functional at all times during construction. The Contractor is to furnish materials, equipment, labor, tools and incidentals necessary to maintain flow. This work shall be considered incidental to various contract items.
13.

Earth swale shall be graded to drain. This work shall be considered incidental to the various contract items.
14.

The contractor shall provide for access to and from all existing side streets at all times.
15.

All saw cutting work shall be considered incidental to Excavation for Reconstruction of Weakened Pavement Areas.

16.

No material and/or equipment shall be stockpiled or otherwise stored within the highway right-of-way except at locations designated in writing and approved by the Engineer. If use of location is approved by the Engineer, the Contractor shall obtain a permit to use the property within the highway right-of-way from the State Right-Of-Way Branch at telephone no. 692-7332.

LEGEND

	Reconstruction Areas		Existing Sewer Line
	Leveling Areas		New 12" Sewer Line
	Cold Planing Areas		Existing Sewer Manhole
	Resurfacing Limits		Adjusted Sewer MH Frame/Cover
	Existing Electrical Line		New Sewer Manhole
	New Electrical Line		Existing 6" Gas Line
	Existing Joint Pole		New 6" Gas Line
	Existing Power Pole		Existing Gas Valve Box
	Existing Electric Manhole		Adjusted Gas Valve Box
	Adjusted Elec. MH Frame/Cover		New Gas Valve Box
	New Electric Manhole		Existing Gas Manhole
	Existing Telephone Line		Adjusted Gas MH Frame/Cover
	New Telephone Line		New Gas Manhole
	Existing Telephone Pole		Existing Monument
	Existing Telephone Manhole		Adjusted Monument
	Adjusted Tele. MH Frame/Cover		New Monument
	New Telephone Manhole		Existing 24" Drain Line
	Existing Signal Corps Line		New 24 " RCP Drain Line
	New Signal Corps Line		Existing Storm Drain Manhole
	Existing TV Cable		Adjusted Storm Drain MH Frame/Cover
	New TV Cable		New Storm Drain Manhole
	Existing 12" Water Line		Existing Grated Drop Inlet
	New 12" Water Line		Existing Catch Basin
	Existing Water Manhole		Existing Traffic Sign
	Adjusted Water MH Frame/Cover		Existing Highway Lighting Standard
	New Water Manhole		
	Existing Water Air Valve		
	Adjusted Water Air Valve		
	New Water Air Valve		
	Existing Water Valve Box		
	Adjusted Water Valve Box		
	New Water Valve Box		
	Existing Water Meter		
	Adjusted Water Meter		
	New Water Meter		
	Existing Fire Hydrant		
	New Fire Hydrant		

STATE OF HAWAII

DEPARTMENT OF TRANSPORTATION

HIGHWAYS DIVISION

GENERAL NOTES AND LEGEND

KALANIANA'OLE HIGHWAY RESURFACING

West Hind Drive to

Vicinity of Hanauma Bay

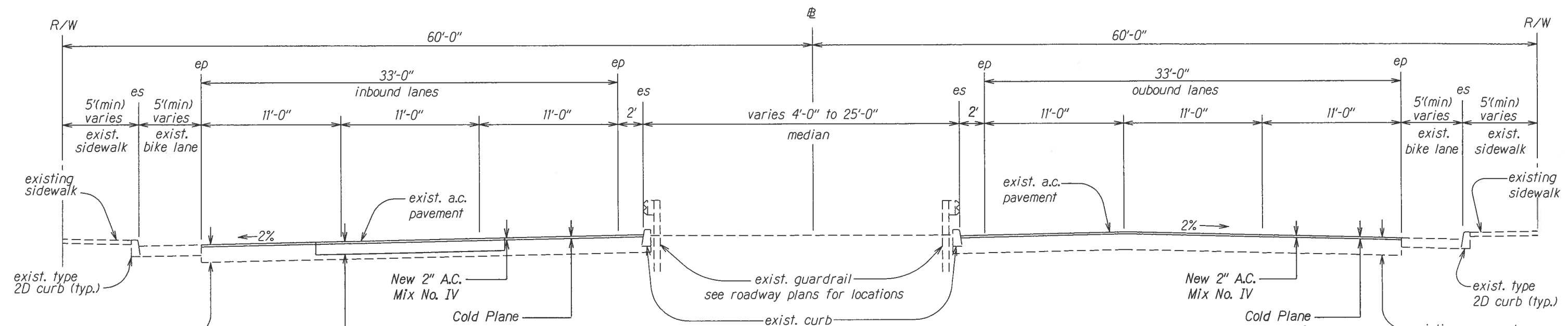
Project No.: 72C-01-07M

Not to Scale

Date: Apr., 2012

SHEET No. 1 OF 1 SHEETS

FED. ROAD DIST. NO.	STATE	PROJ. NO.	FISCAL YEAR	SHEET NO.	TOTAL SHEETS
HAWAII	HAW.	72C-01-07M	2012	0	0



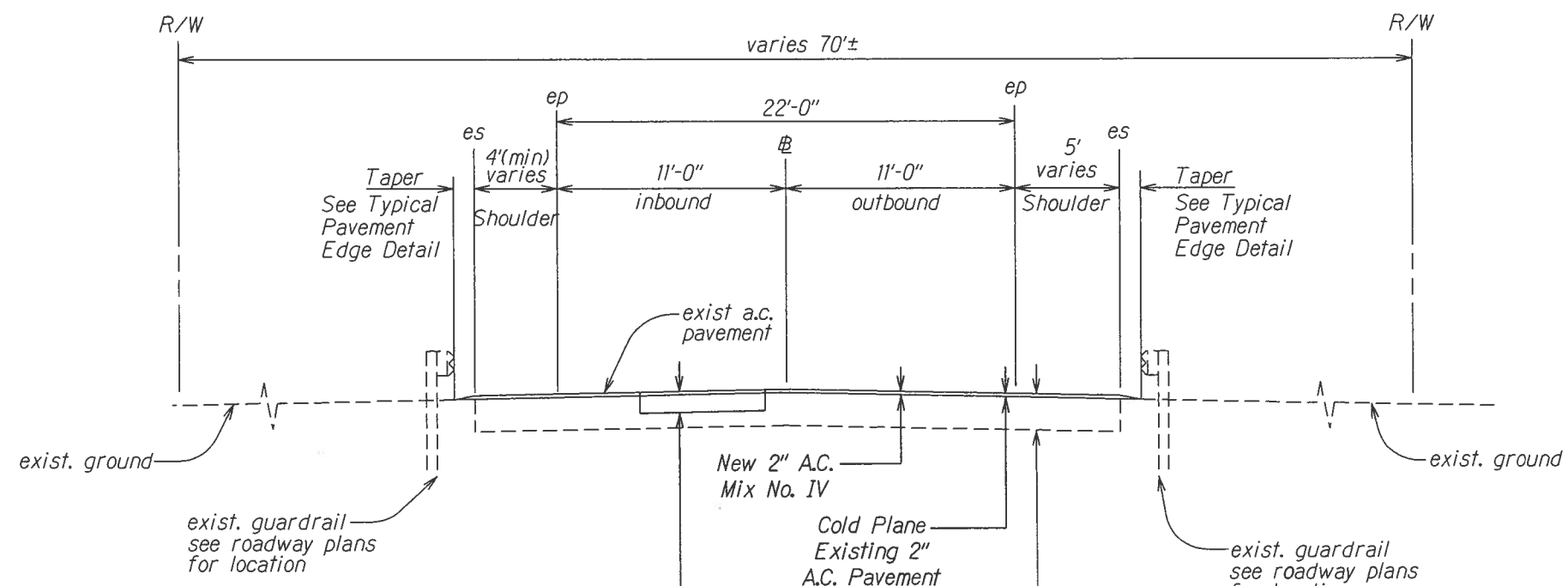
TYPICAL SECTION
 West Hind Dr. to East Halemaumau St.
 Sta. 100+25± to Sta. 177+20±

existing pavement
 7" ac (Sta. 100+25± to Sta 159+50±)
 9" acb (Sta. 100+25± to Sta 159+50±)
 10" ac (Sta. 159+50± to Sta 177+20±)
 7" acb (Sta. 159+50± to Sta 177+20±)

Reconstruction of Weakened Pavement
 (Where Shown On Plans)
 4 1/2" AC Mix No. IV
 8" ACB (Sta. 100+25± to Sta. 159+50±)
 7 1/2" ACB (Sta. 159+50± to Sta. 177+20±)

existing pavement
 7" ac (Sta. 100+25± to Sta 159+50±)
 9" acb (Sta. 100+25± to Sta 159+50±)
 10" ac (Sta. 159+50± to Sta 177+20±)
 7" acb (Sta. 159+50± to Sta 177+20±)

- Notes:**
1. If the cold planing operation exposes a delaminated AC layer, the delaminated material shall be removed and filled with compacted AC Mix V. Payment shall be incidental to the various paving items.
 2. Re-compact top of existing subbase if excavation exposes subbase layer.



TYPICAL SECTION
 Lunalilo Home Rd. to Hanauma Bay Rd.
 Sta. 105+00± to Sta. 139+50±

Reconstruction of Weakened Pavement
 (Where Shown On Plans)
 3 1/2" AC Mix No. IV
 8 1/2" ACB

existing pavement
 4" ac
 3" acb
 12" asb

STATE OF HAWAII
 DEPARTMENT OF TRANSPORTATION
 HIGHWAYS DIVISION

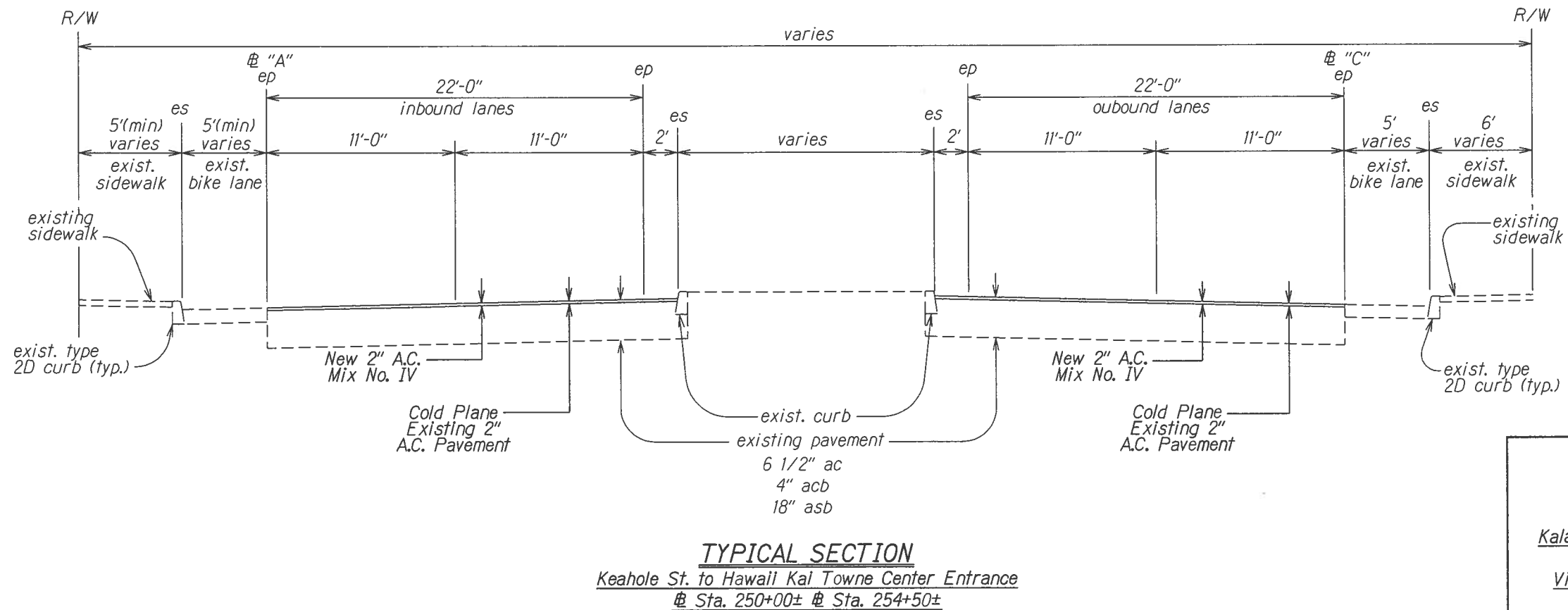
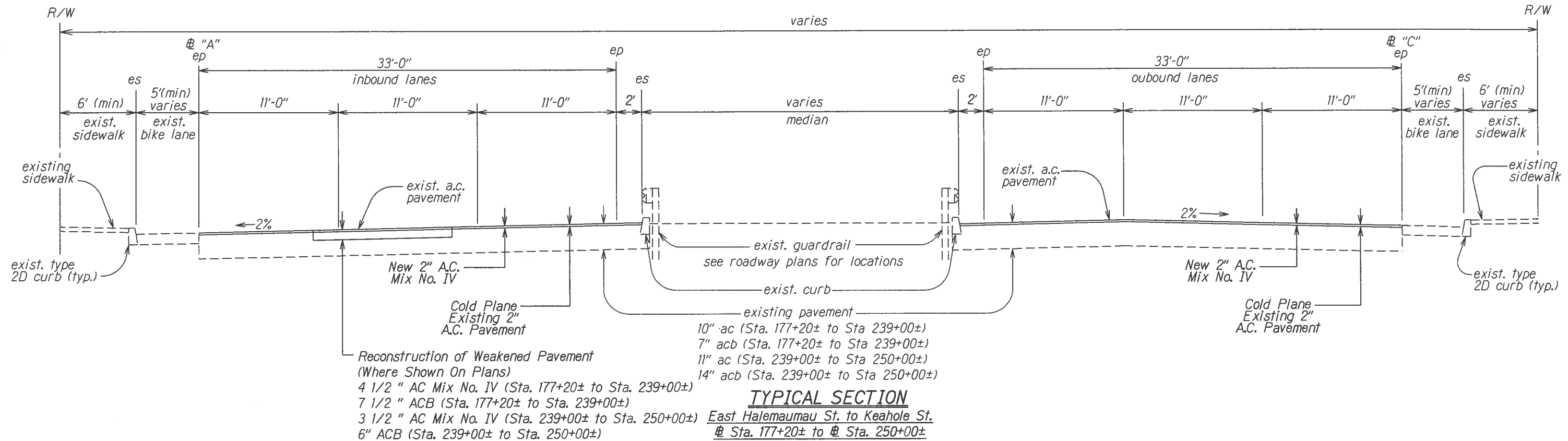
TYPICAL SECTION
 Kalanianaʻole Highway Resurfacing
 West Hind Drive to
 Vicinity of Hanauma Bay Road
 Project No. 72C-01-07M

Scale: 1/4"=1'-0" Date: March, 2012

SHEET No. 1 OF X SHEETS

SURVEY PLOTTED BY	DATE
DRAWN BY	
DESIGNED BY	
CHECKED BY	
ORIGINAL PLAN	
NOTE BOOK	
N.	

FED. ROAD DIST. NO.	STATE	PROJ. NO.	FISCAL YEAR	SHEET NO.	TOTAL SHEETS
HAWAII	HAW.	72C-01-07M	2012	0	0



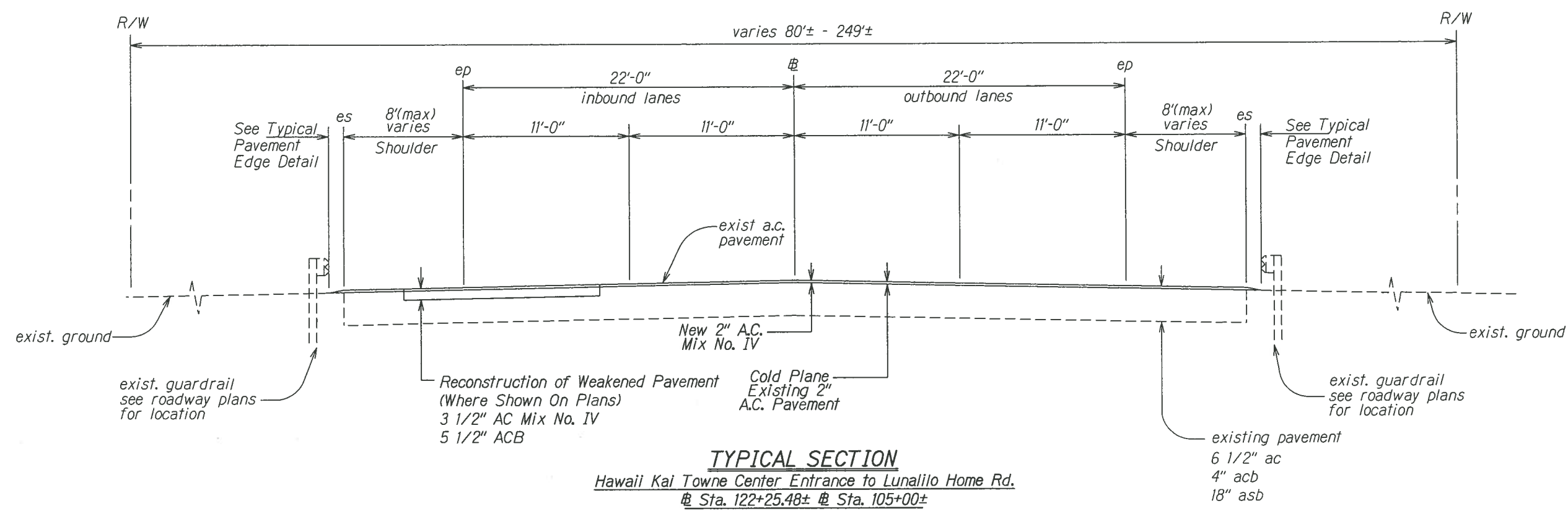
SURVEY PLOTTED BY	DATE
DRAWN BY	
DESIGNED BY	
CHECKED BY	
NOTE BOOK	
N.	

STATE OF HAWAII
DEPARTMENT OF TRANSPORTATION
HIGHWAYS DIVISION

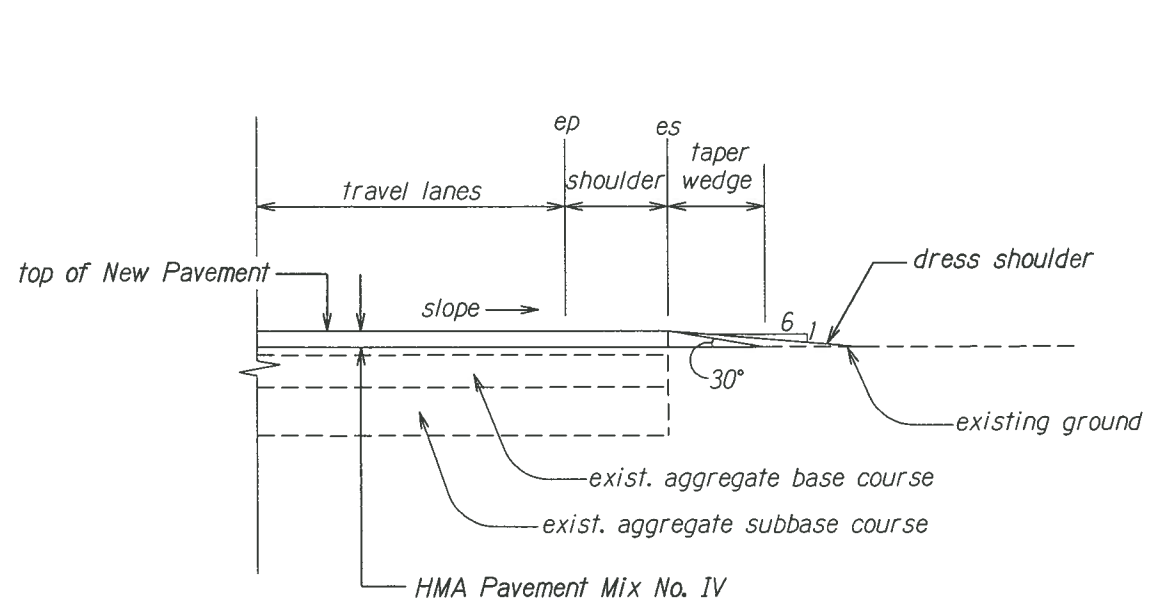
TYPICAL SECTION
Kalanianaʻole Highway Resurfacing
West Hind Drive to
Vicinity of Hanauma Bay Road
Project No. 72C-01-07M
Scale: 1/4"=1'-0" Date: March, 2012

SHEET No. 2 OF X SHEETS

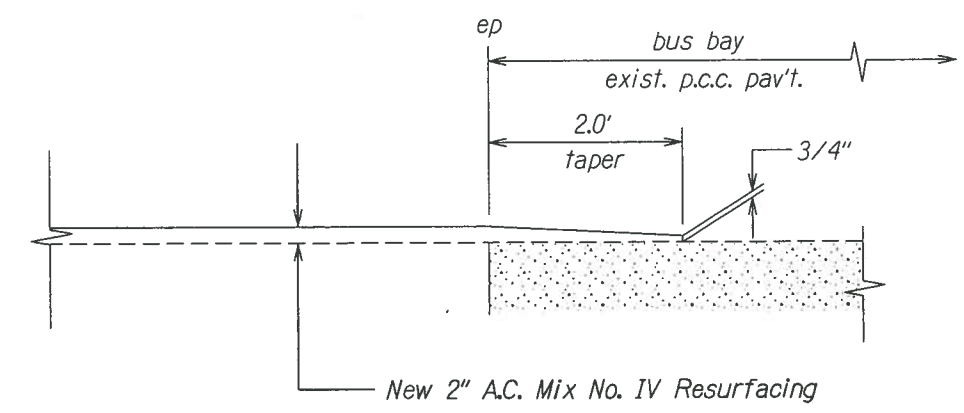
FED. ROAD DIST. NO.	STATE	PROJ. NO.	FISCAL YEAR	SHEET NO.	TOTAL SHEETS
HAWAII	HAW.	72C-01-07M	2012	0	0



TYPICAL SECTION
Hawaii Kai Towne Center Entrance to Lunalilo Home Rd.
@ Sta. 122+25.48± @ Sta. 105+00±



TYPICAL PAVEMENT EDGE DETAIL
Scale: Not to Scale



TYPICAL SECTION AT BUS STOP
Scale: Not to Scale

SURVEY PLOTTED BY	DATE
DRAWN BY	
DESIGNED BY	
CHECKED BY	
ORIGINAL PLAN	
NOTE BOOK	
NA	

STATE OF HAWAII
DEPARTMENT OF TRANSPORTATION
HIGHWAYS DIVISION

TYPICAL SECTION
Kalanianaʻole Highway Resurfacing
West Hind Drive to
Vicinity of Hanauma Bay Road
Project No. 72C-01-07M
Scale: 1/4"=1'-0" Date: March, 2012

SHEET No. 3 OF X SHEETS