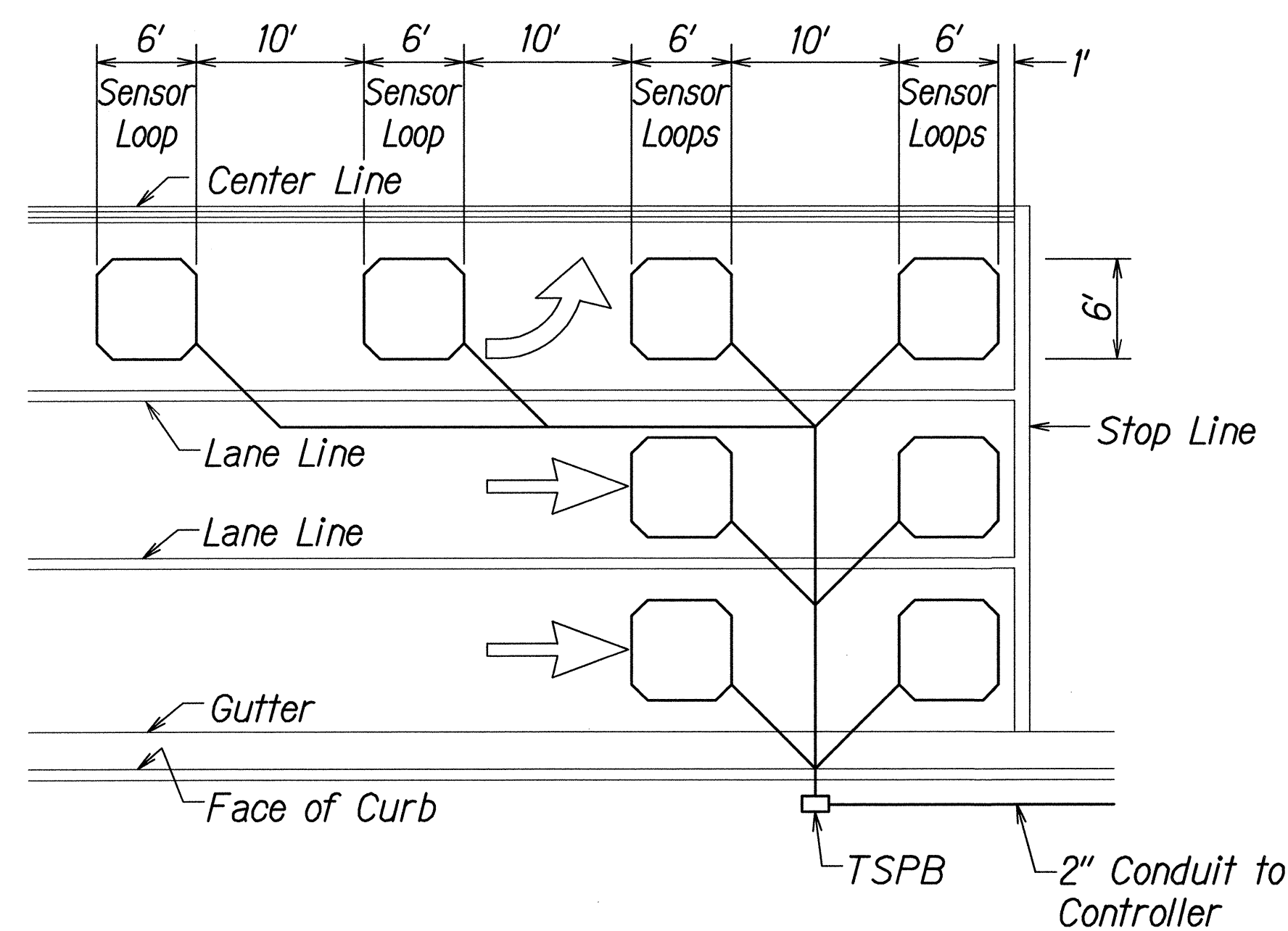
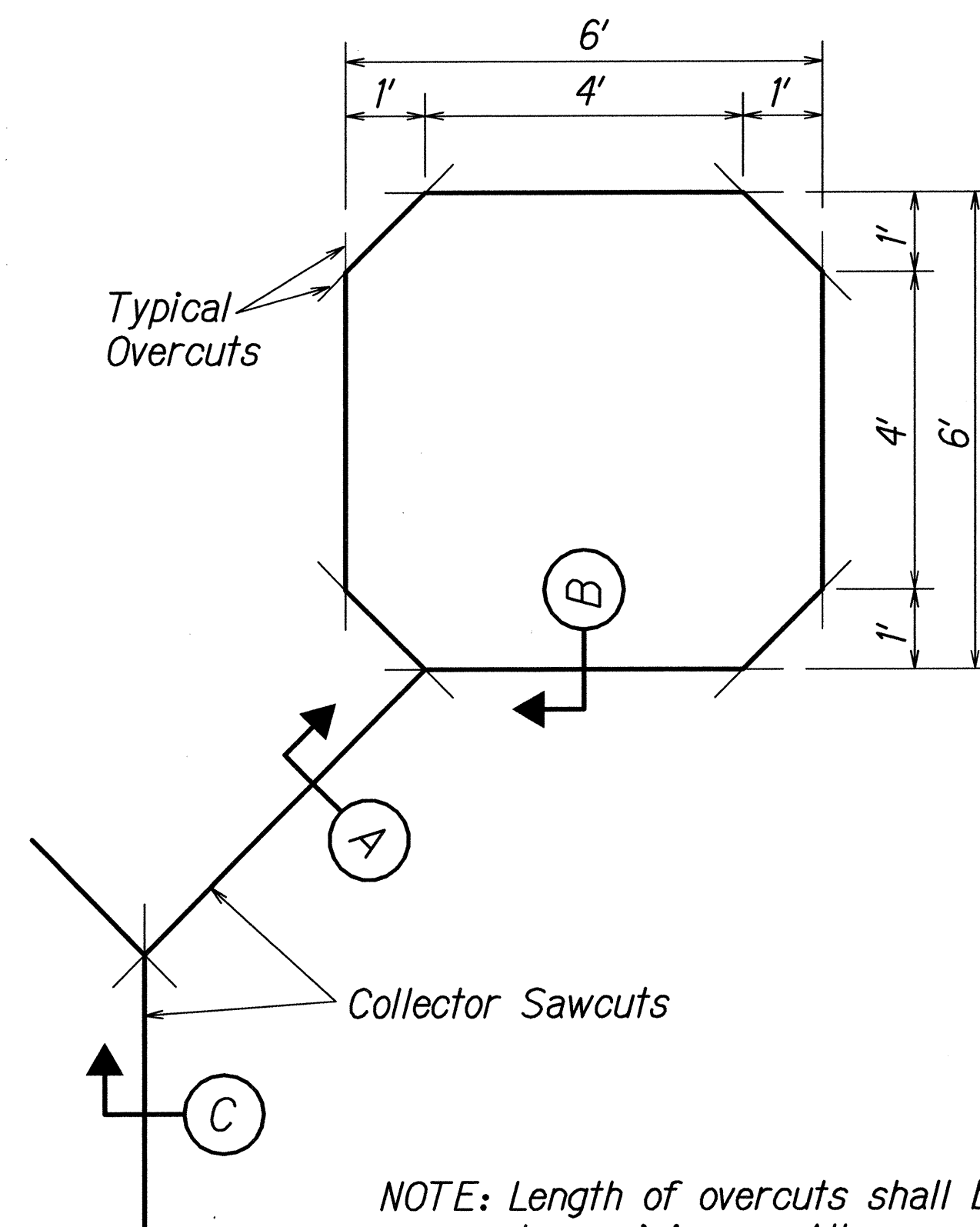


FED. ROAD DIST. NO.	STATE	FED. AID PROJ. NO.	FISCAL YEAR	SHEET NO.	TOTAL SHEETS
HAWAII	HAW.	NH-072-1(056)	2013	64	85

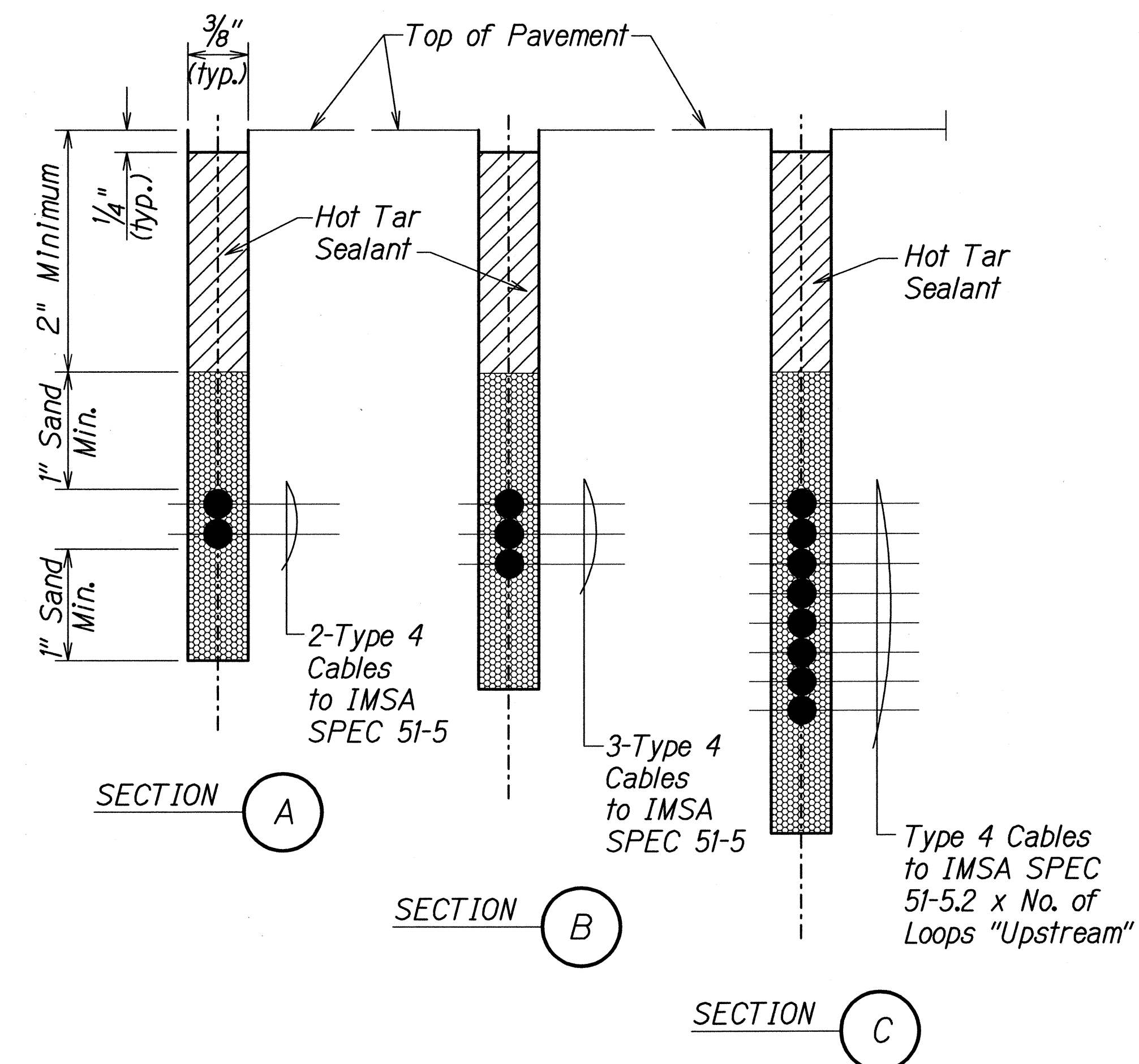


- NOTES:
1. Center sensor loops in lanes.
 2. Collector cables shall be twisted 2 turns per foot.
 3. Number of loops and locations vary. See project plans.
 4. Number and locations of collector sawcuts may be varied in the field to suit.

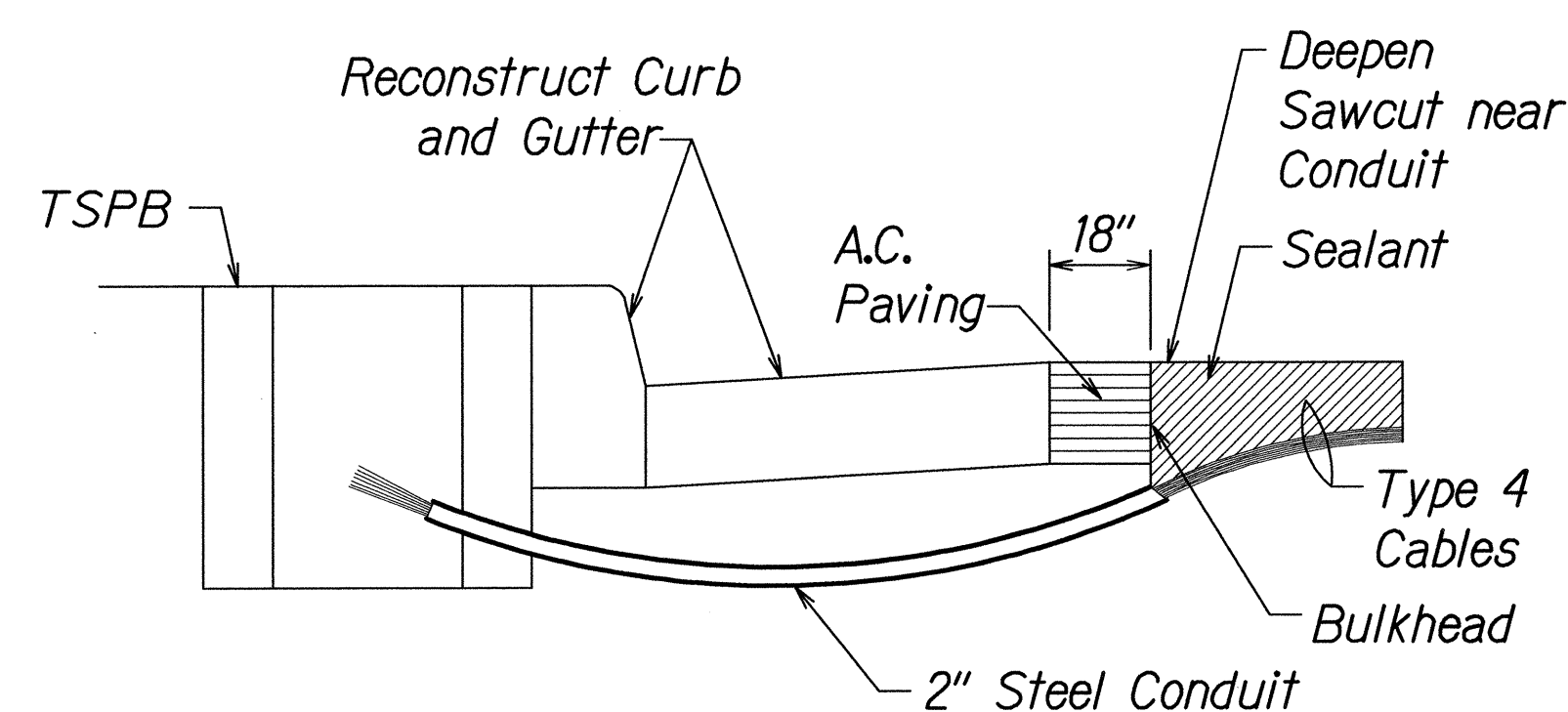
TYPICAL SENSOR LOOP LAYOUT



TYPICAL SENSOR LOOP SAWCUT DETAIL



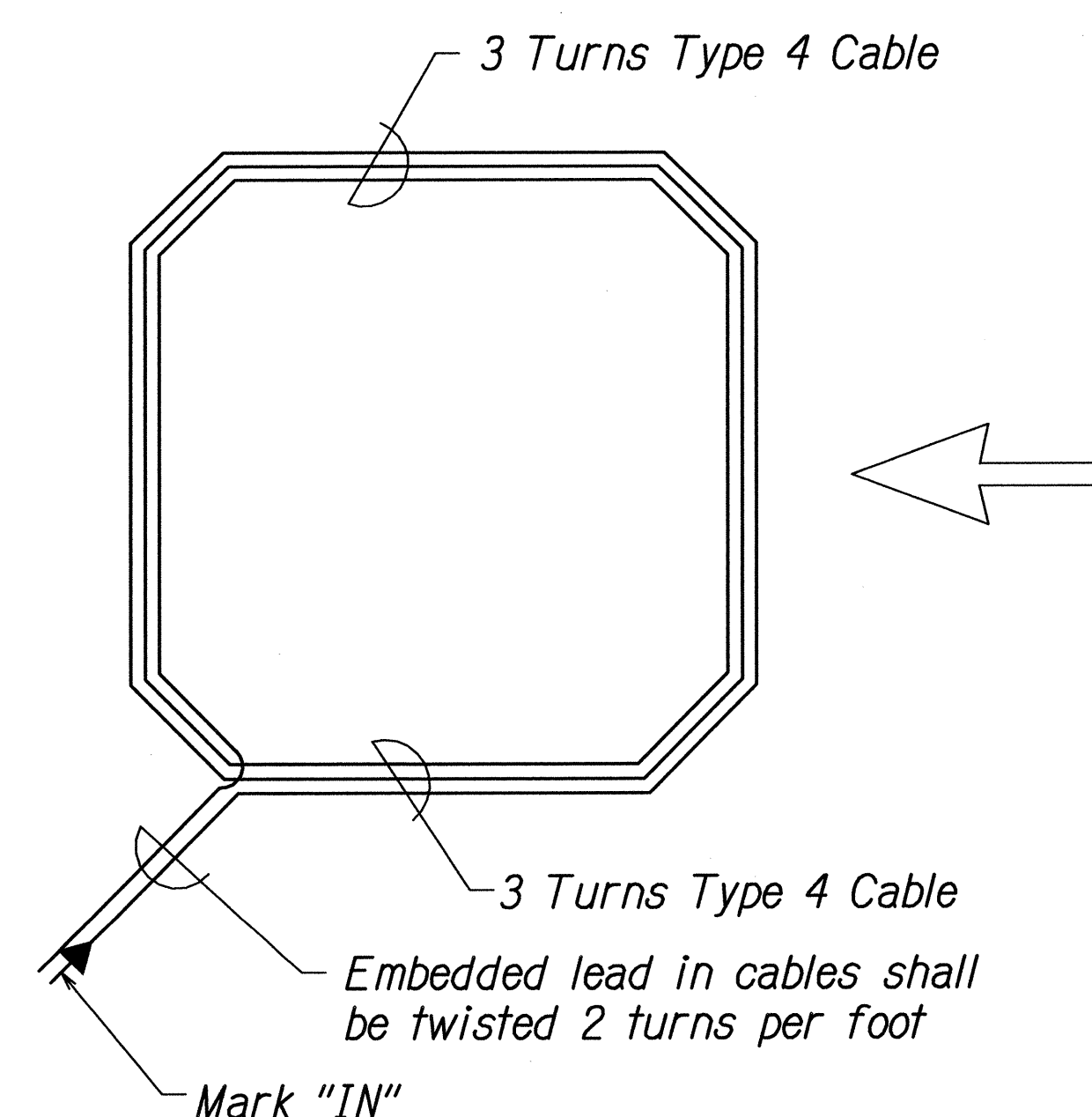
TYPICAL SECTION THROUGH SENSOR LOOP



NOTES ON CONSTRUCTION AT END OF SAWCUT

1. Seal roadway end of conduit after installation of conductors.
2. Install bulkhead across conduit trench.
3. Place hot tar in sawcut.
4. Backfill over conduit with new A.C.
5. Reconstruct curb and gutter as required.

DETAIL OF SENSOR LOOP INSTALLATION AT EDGE OF ROADWAY



TYPICAL SENSOR LOOP WIRING DIAGRAM

SURVEY PLATTED BY	DATE
DRAWN BY	
TRACED BY	
NOTED BY	
CHECKED BY	
ORIGINAL PLAN	
NOTE BOOK	
Idon	
Revised	
No.	

STATE OF HAWAII
DEPARTMENT OF TRANSPORTATION
HIGHWAYS DIVISION

LOOP DETECTOR DETAILS

KALANIANA'OLE HIGHWAY RESURFACING

West Hind Drive to

Vicinity of Hanauma Bay Road

Federal Aid Project No. NH-072-1(056)

Scale: As Shown

Date: April 2013

SHEET No. **T22** OF **35** SHEETS