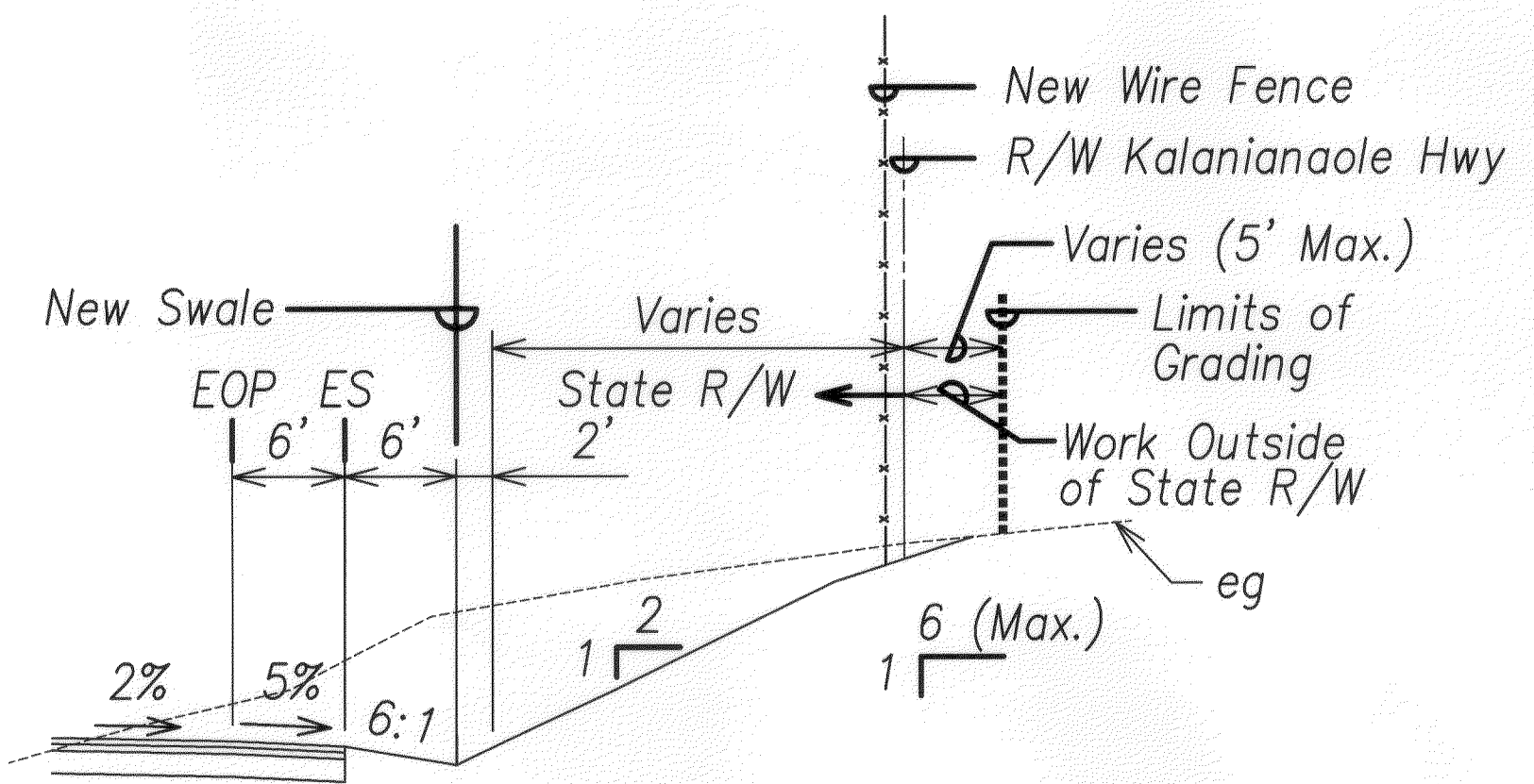
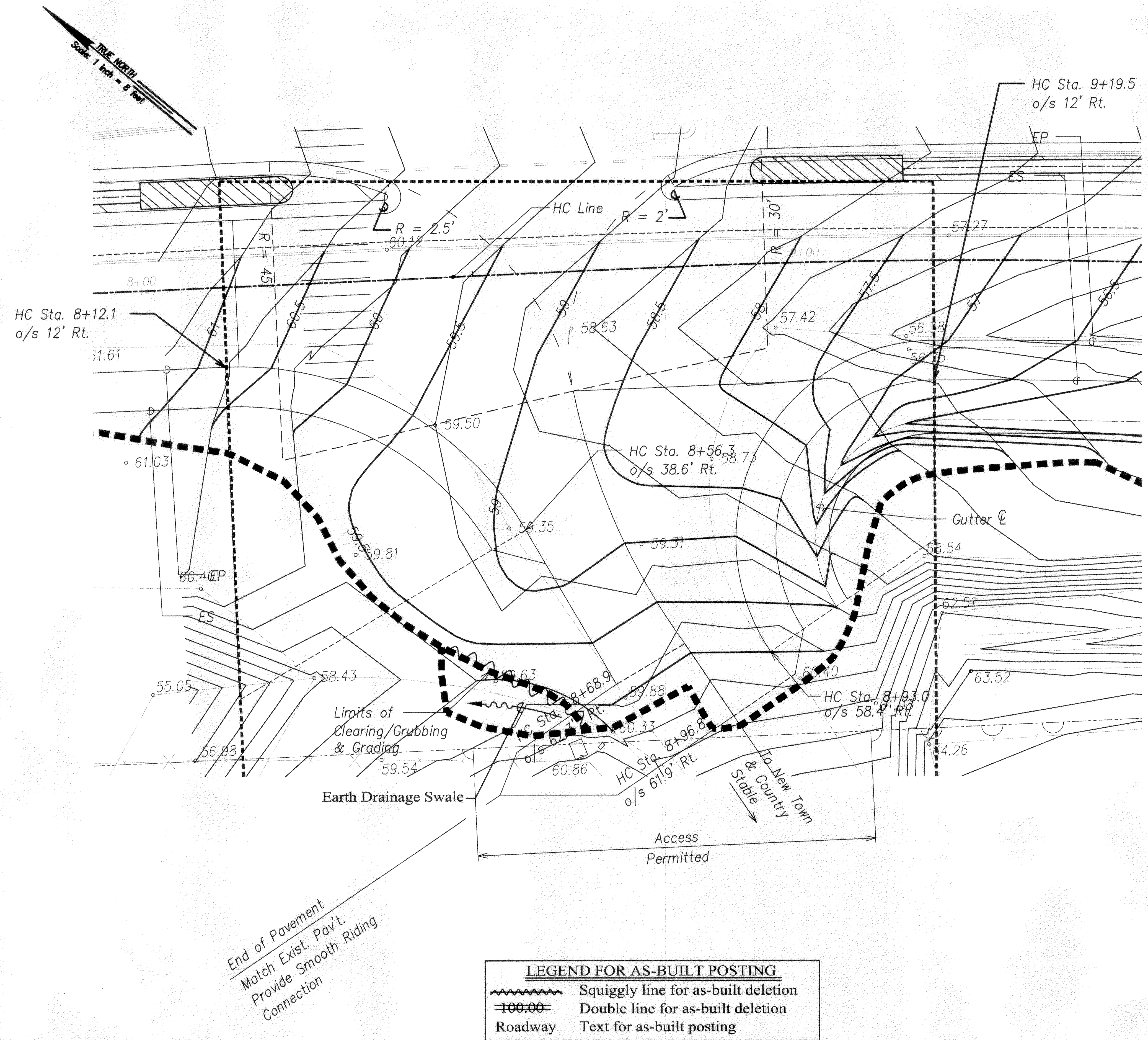


FED. ROAD DIST. NO.	STATE	PROJECT NO.	FISCAL YEAR	SHEET NO.	TOTAL SHEETS
HAWAII	HAW.	72A-02-06	2008	18	66



SECTION A-A  
Scale: Not to Scale

ORIGINAL PLAN	SURVEY PLOTTED BY	DATE
NO. 100-00	DRAWN BY	
	CHECKED BY	
	CHECKED BY	

End of Pavement  
Match Exist. Pav't.  
Provide Smooth Riding  
Connection

LEGEND FOR AS-BUILT POSTING	
	Squiggly line for as-built deletion
	Double line for as-built deletion
Roadway	Text for as-built posting

KENNETH O. NAGAI  
LICENSED PROFESSIONAL ENGINEER  
No. 3285-C  
HAWAII, U.S.A.  
SIGNATURE  
APRIL 30, 2010  
EXPIRATION DATE OF LICENSE  
THIS WORK WAS PREPARED BY ME OR UNDER MY SUPERVISION

STATE OF HAWAII  
DEPARTMENT OF TRANSPORTATION  
HIGHWAYS DIVISION  
**INTERSECTION DETAIL PLAN  
AND MISCELLANEOUS SECTION**  
KALANIANA'OLE HIGHWAY MEDIAN  
IMPROVEMENTS VICINITY OF OLOMANA  
GOLF COURSE PROJECT NO. 72A-02-06  
SCALE: 1"=8' DATE: June 2008  
SHEET No. C-16 OF 43 SHEETS

"AS-BUILT"