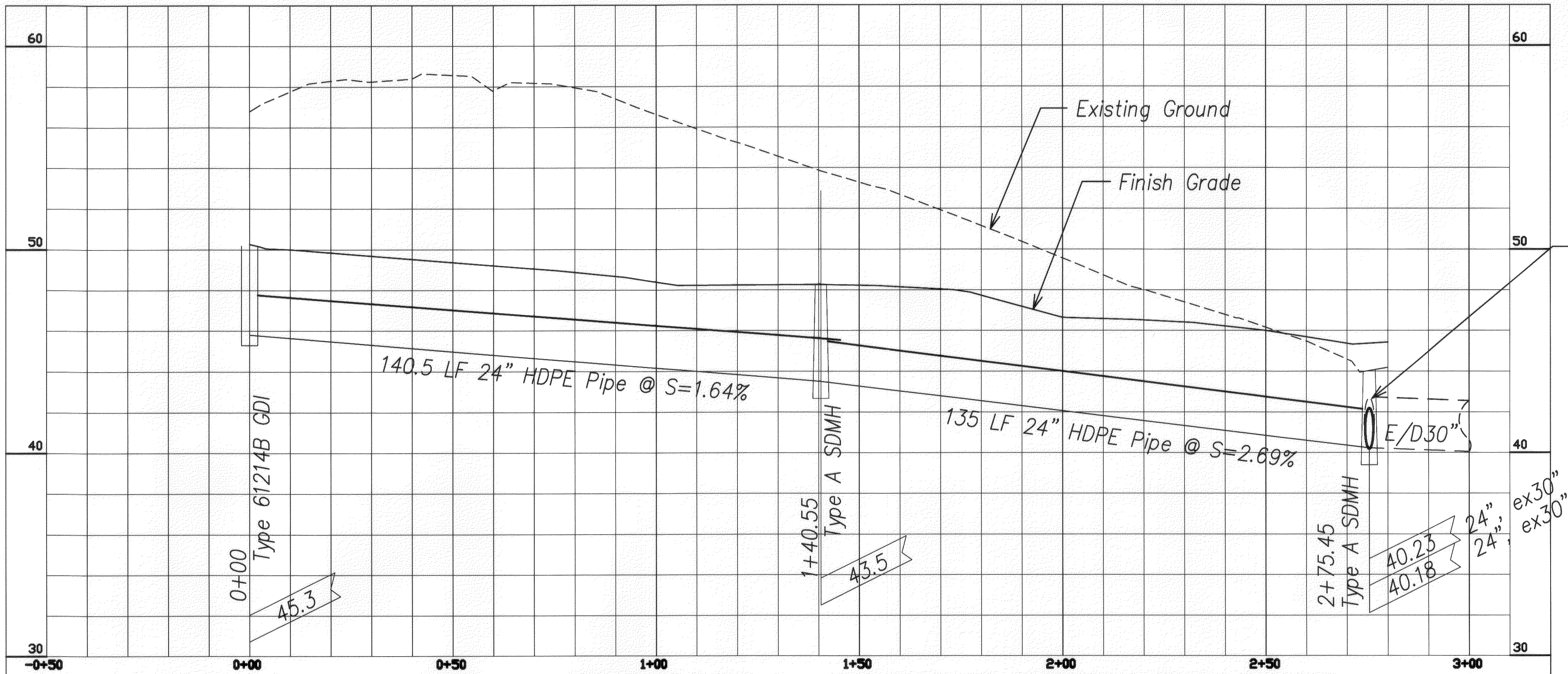
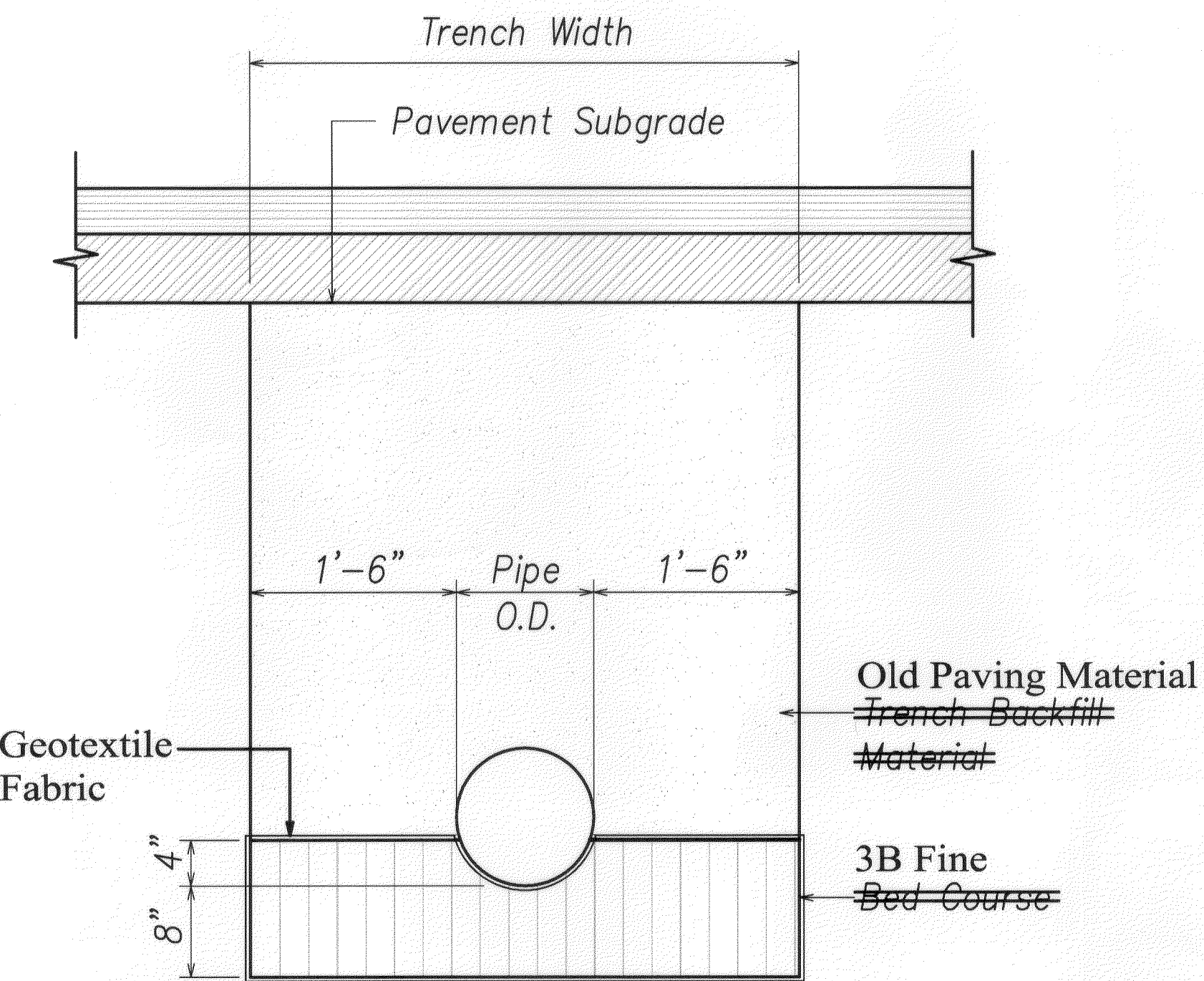


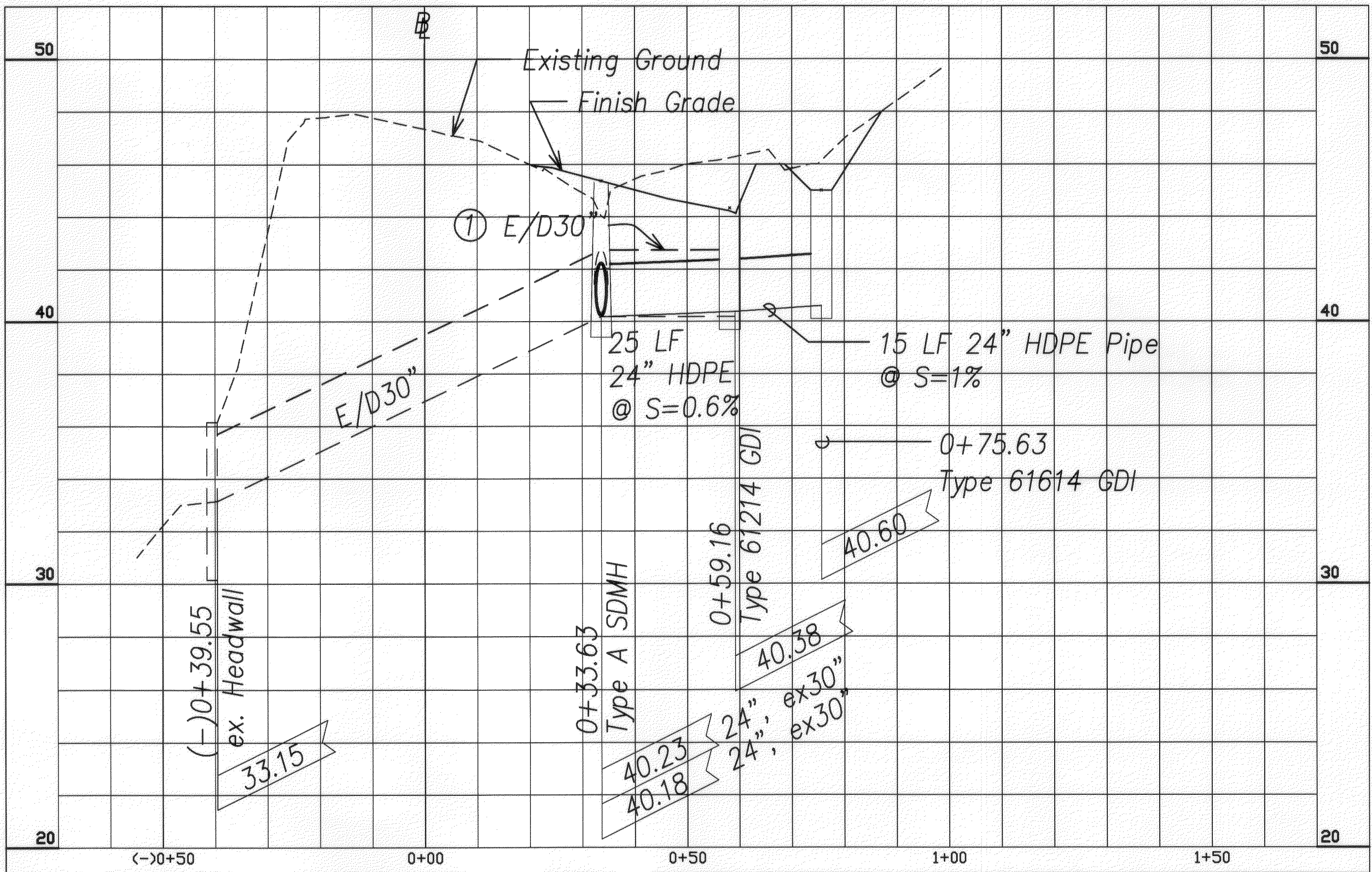
FED. ROAD DIST. NO.	STATE	PROJECT NO.	FISCAL YEAR	SHEET NO.	TOTAL SHEETS
HAWAII	HAW.	72A-02-06	2008	19	66



DRAINLINE A PROFILE  
Horizontal: 1"=20'; Vertical: 1"=4'



DRAIN TRENCH EXCAVATION  
Scale: 1"=1'-0"



DRAINLINE B PROFILE  
Horizontal: 1"=20'; Vertical: 1"=4'

LEGEND FOR AS-BUILT POSTING	
	Squiggly line for as-built deletion
	Double line for as-built deletion
Roadway	Text for as-built posting

NOTE:  
① Remove Existing Catch Basin & Pipe

KENNETH O. NAGA  
LICENSED PROFESSIONAL ENGINEER  
No. 3285-C  
HAWAII, U.S.A.  
SIGNATURE  
APRIL 30, 2010  
EXPIRATION DATE OF LICENSE  
THIS WORK WAS PREPARED BY ME OR UNDER MY SUPERVISION

STATE OF HAWAII  
DEPARTMENT OF TRANSPORTATION  
HIGHWAYS DIVISION  
DRAINLINE PROFILES  
KALANIANA'OLE HIGHWAY MEDIAN  
IMPROVEMENTS VICINITY OF OLOMANA  
GOLF COURSE PROJECT NO. 72A-02-06  
SCALE: (H)1"=20'; (V)1"=4' DATE: June 2008  
SHEET No. C-17 OF 43 SHEETS

"AS-BUILT"