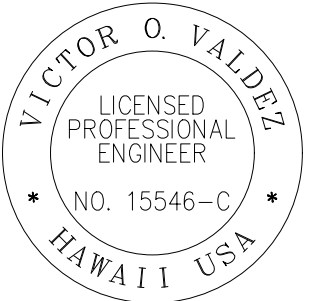
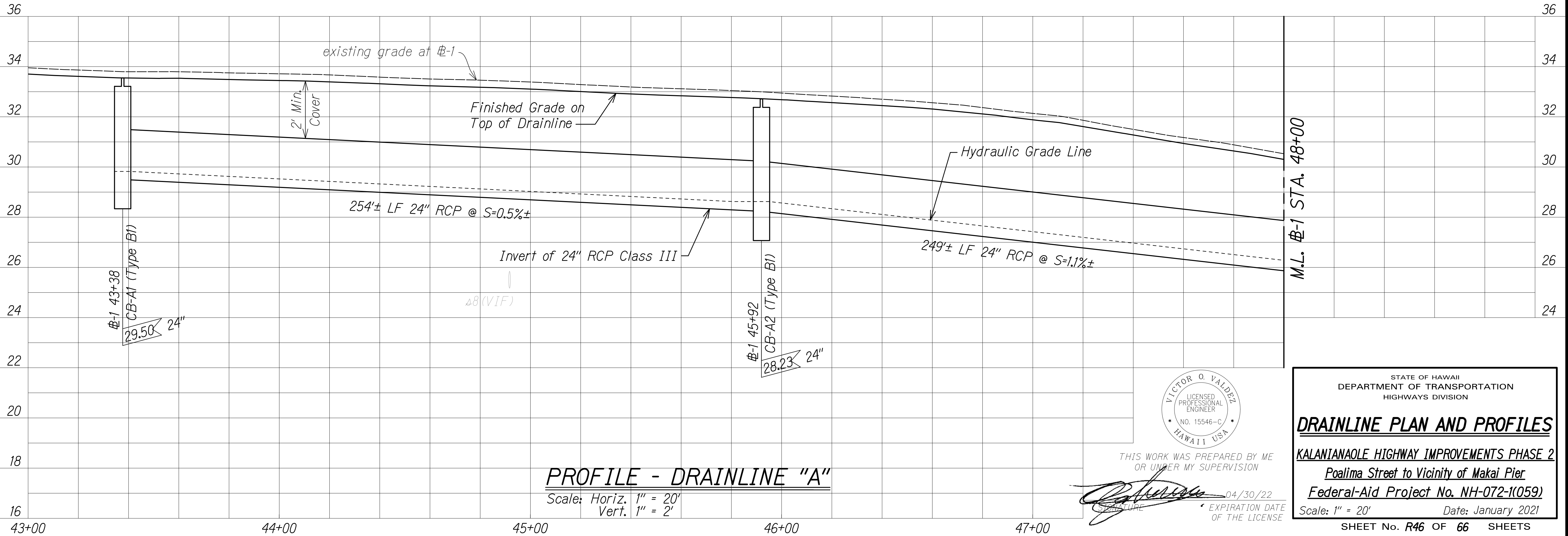
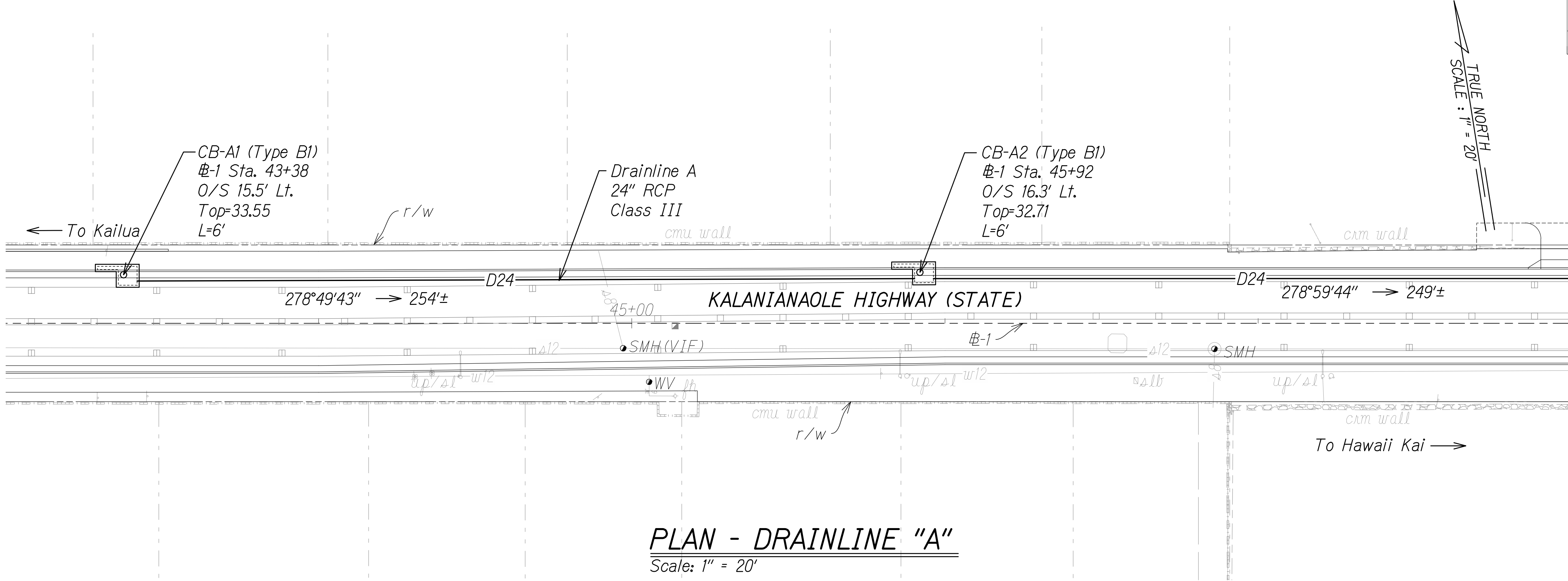
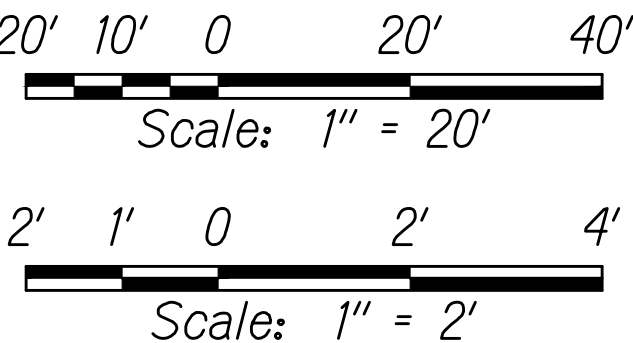


FED. ROAD DIST. NO.	STATE	FED-AID PROJ. NO.	FISCAL YEAR	SHEET NO.	TOTAL SHEETS
HAWAII	HAW.	NH-072-1(059)	2021	129	243

- NOTES:**
1. Install New Type B1 Catch Basin per HDOT Standard Plan H-02B.
 2. For Typical Trench Restoration Details, See Sheet C21.

GRAPHICAL SCALES:



THIS WORK WAS PREPARED BY ME
OR UNDER MY SUPERVISION

[Signature] 04/30/22
EXPIRATION DATE OF THE LICENSE

STATE OF HAWAII
DEPARTMENT OF TRANSPORTATION
HIGHWAYS DIVISION

DRAINLINE PLAN AND PROFILES

KALANIANA'OLE HIGHWAY IMPROVEMENTS PHASE 2
Poalima Street to Vicinity of Makai Pier
Federal-Aid Project No. NH-072-1(059)

Scale: 1" = 20' Date: January 2021

SHEET No. R46 OF 66 SHEETS

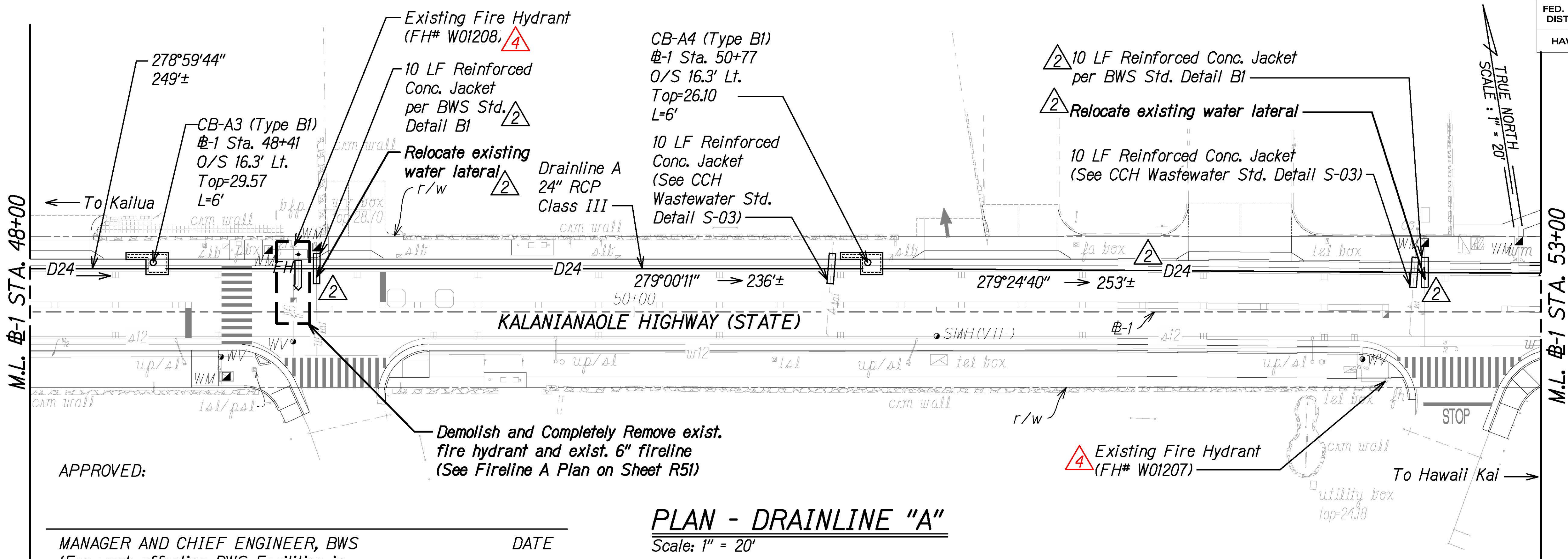
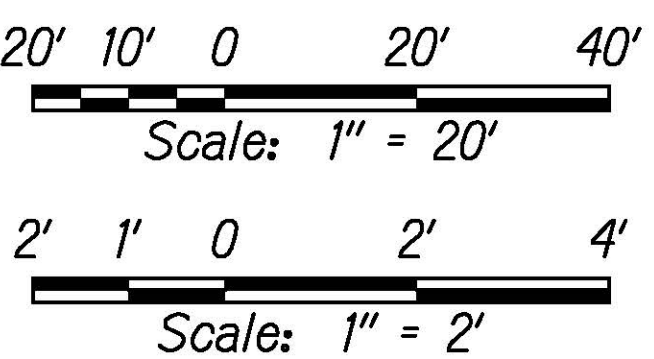
C:\CIVIL 3D PROJECTS\2017_002_000_DOT_KAL_HWY_RESURFACING_POALIMA_TO_HULU\01_CE_DWG\R46 DRAINLINE PLAN AND PROFILES.DWG 11/14/2020 10:51 PM

FED. ROAD DIST. NO.	STATE	FED-AID PROJ. NO.	FISCAL YEAR	SHEET NO.	TOTAL SHEETS
HAWAII	HAW.	NH-072-1(059)	2021	ADD. 130	243

NOTES:

1. Install New Type B1 Catch Basin per HDOT Standard Plan H-02B.
2. For Typical Trench Restoration Details, See Sheet C21.

GRAPHICAL SCALES:

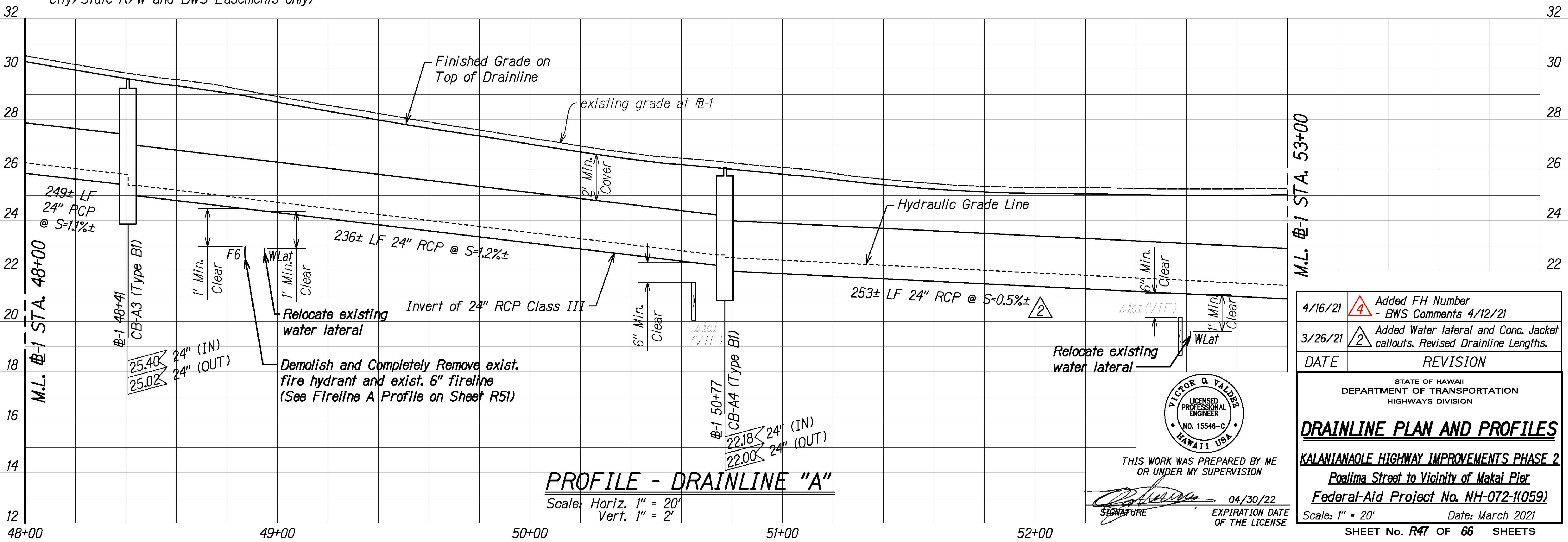


PLAN - DRAINLINE "A"

Scale: 1" = 20'

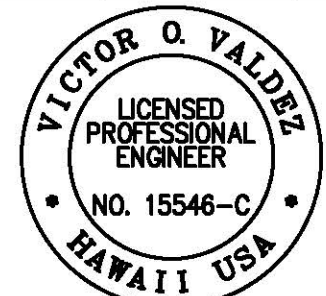
APPROVED:
MANAGER AND CHIEF ENGINEER, BWS
(For work affecting BWS Facilities in
City/State R/W and BWS Easements only)

DATE



PROFILE - DRAINLINE "A"

Scale: Horiz. 1" = 20'
Vert. 1" = 2'



THIS WORK WAS PREPARED BY ME
OR UNDER MY SUPERVISION

SIGNATURE

04/30/22
EXPIRATION DATE
OF THE LICENSE

4/16/21	Added FH Number - BWS Comments 4/12/21
3/26/21	Added Water lateral and Conc. Jacket callouts. Revised Drainline Lengths.
DATE	REVISION

STATE OF HAWAII
DEPARTMENT OF TRANSPORTATION
HIGHWAYS DIVISION

DRAINLINE PLAN AND PROFILES

KALANIANA'OLE HIGHWAY IMPROVEMENTS PHASE 2
Poalima Street to Vicinity of Makai Pier
Federal-Aid Project No. NH-072-1(059)

Scale: 1" = 20' Date: March 2021

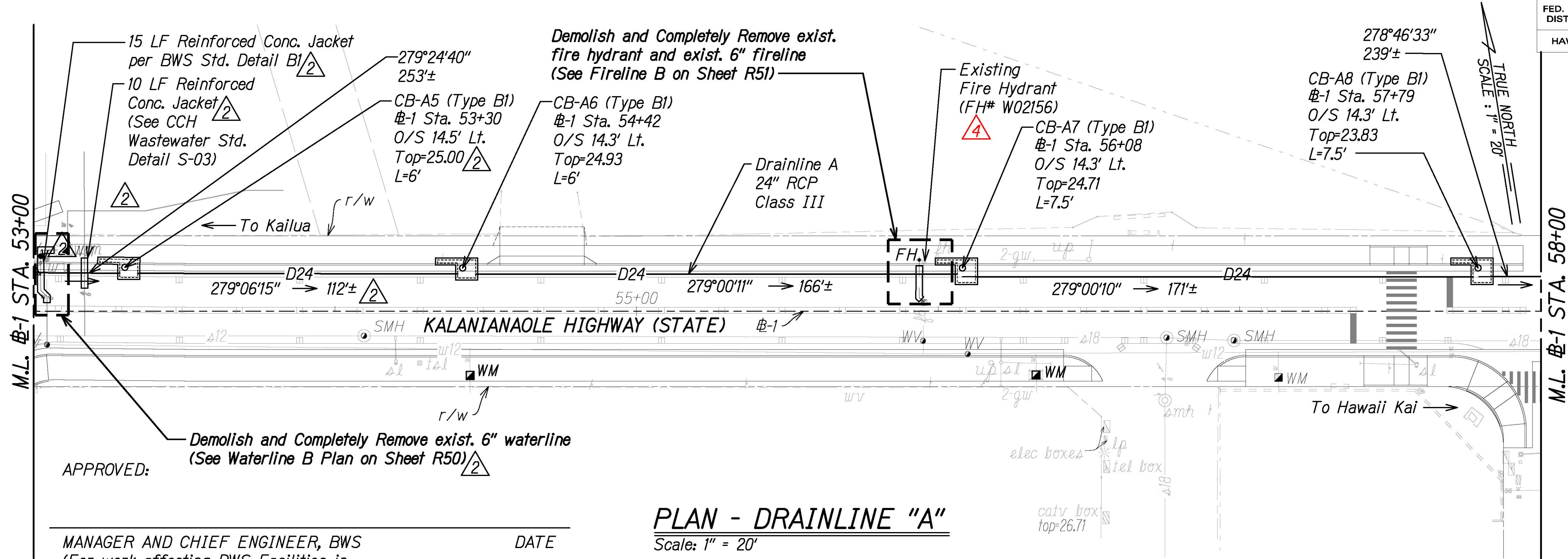
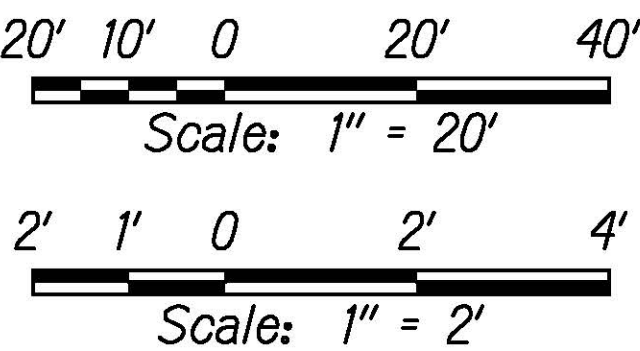
SHEET No. R47 OF 66 SHEETS

FED. ROAD DIST. NO.	STATE	FED-AID PROJ. NO.	FISCAL YEAR	SHEET NO.	TOTAL SHEETS
HAWAII	HAW.	NH-072-1(059)	2021	ADD. 131	243

NOTES:

1. Install New Type B1 Catch Basin per HDOT Standard Plan H-02B.
2. For Typical Trench Restoration Details, See Sheet C21.

GRAPHICAL SCALES:

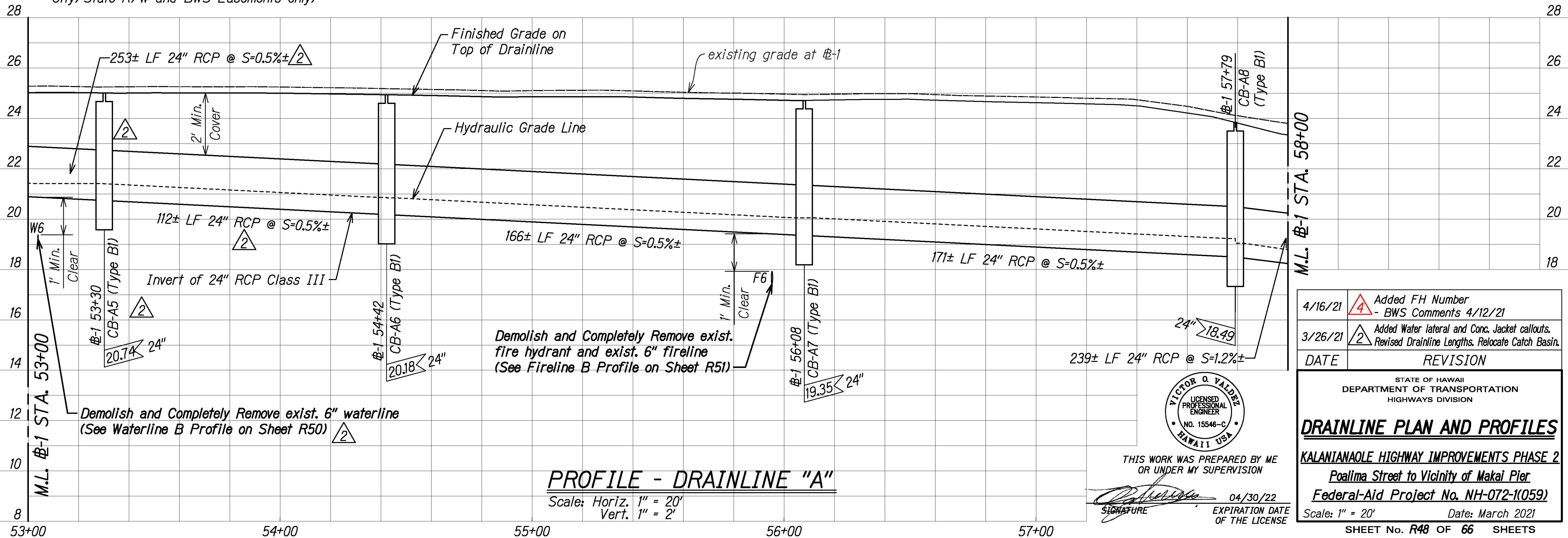


PLAN - DRAINLINE "A"

Scale: 1" = 20'

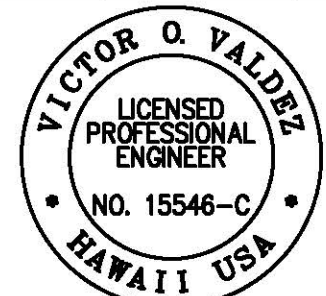
MANAGER AND CHIEF ENGINEER, BWS
(For work affecting BWS Facilities in
City/State R/W and BWS Easements only)

DATE



PROFILE - DRAINLINE "A"

Scale: Horiz. 1" = 20'
Vert. 1" = 2'



THIS WORK WAS PREPARED BY ME
OR UNDER MY SUPERVISION

SIGNATURE: [Signature] EXPIRATION DATE OF THE LICENSE: 04/30/22

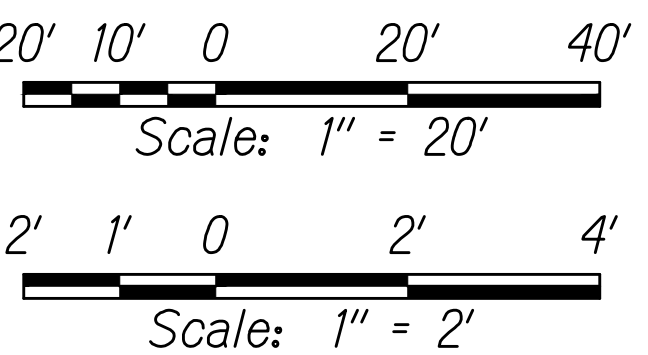
4/16/21	Added FH Number - BWS Comments 4/12/21
3/26/21	Added Water lateral and Conc. Jacket callouts. Revised Drainline Lengths. Relocate Catch Basin.
DATE	REVISION
STATE OF HAWAII DEPARTMENT OF TRANSPORTATION HIGHWAYS DIVISION	
DRAINLINE PLAN AND PROFILES	
KALANIANA'OLE HIGHWAY IMPROVEMENTS PHASE 2	
Poalima Street to Vicinity of Makai Pier	
Federal-Aid Project No. NH-072-1(059)	
Scale: 1" = 20'	Date: March 2021
SHEET No. R48 OF 66 SHEETS	

FED. ROAD DIST. NO.	STATE	FED-AID PROJ. NO.	FISCAL YEAR	SHEET NO.	TOTAL SHEETS
HAWAII	HAW.	NH-072-1(059)	2021	132	243

NOTES:

1. Install New Type A Storm Drain Manhole per HDOT Standard Plan H-03.
2. Install New Outlet Structure per HDOT Standard Plan H-22.
3. For Typical Trench Restoration Details, See Sheet C21.

GRAPHICAL SCALES:



Outlet Structure
#-1 Sta. 63+16
O/S 18.9' Lt.
Top=11.63
219°17'27"
7±
SDMH-A3 (Type A)
#-1 Sta. 63+14
O/S 12.4' Lt.
Top=11.63

SDMH-A2 (Type A)
#-1 Sta. 61+92
O/S 12.6' Lt.
Top=15.12

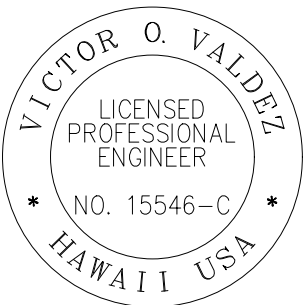
SDMH-A1 (Type A)
#-1 Sta. 60+18
O/S 12.3' Lt.
Top=19.26

PLAN - DRAINLINE "A"

Scale: 1" = 20'

PROFILE - DRAINLINE "A"

Scale: Horiz. 1" = 20'
Vert. 1" = 2'



THIS WORK WAS PREPARED BY ME
OR UNDER MY SUPERVISION

Signature: [Handwritten Signature]
Date: 04/30/22
EXPIRATION DATE OF THE LICENSE

STATE OF HAWAII
DEPARTMENT OF TRANSPORTATION
HIGHWAYS DIVISION

DRAINLINE PLAN AND PROFILES

KALANIANA'OLE HIGHWAY IMPROVEMENTS PHASE 2
Poalima Street to Vicinity of Makai Pier
Federal-Aid Project No. NH-072-1(059)

Scale: 1" = 20' Date: January 2021

SHEET No. R49 OF 66 SHEETS

C:\CIVIL 3D PROJECTS\2017_002_000_DOT_KAL_HWY_RESURFACING_POALIMA_TO_HULU\01_CE_DWG\R49 DRAINLINE PLAN AND PROFILES.DWG 11/14/2020 1:03 PM