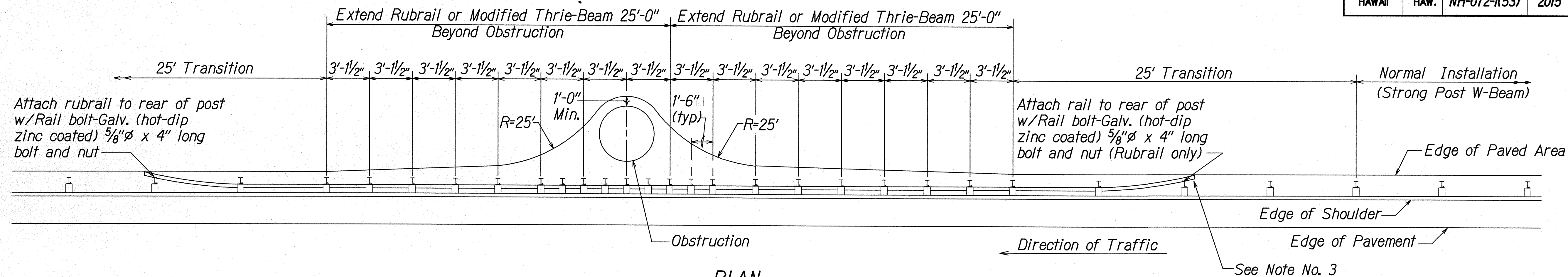
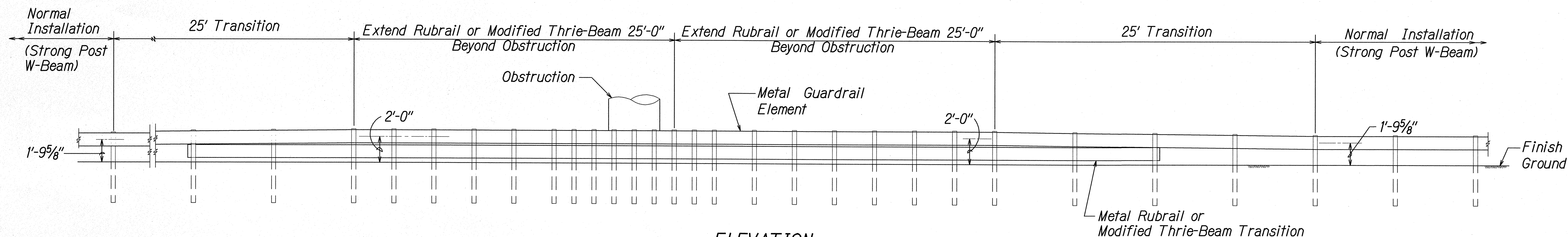


FED. ROAD DIST. NO.	STATE	FED. AID PROJ. NO.	FISCAL YEAR	SHEET NO.	TOTAL SHEETS
HAWAII	HAW.	NH-072-1(53)	2015	24	117



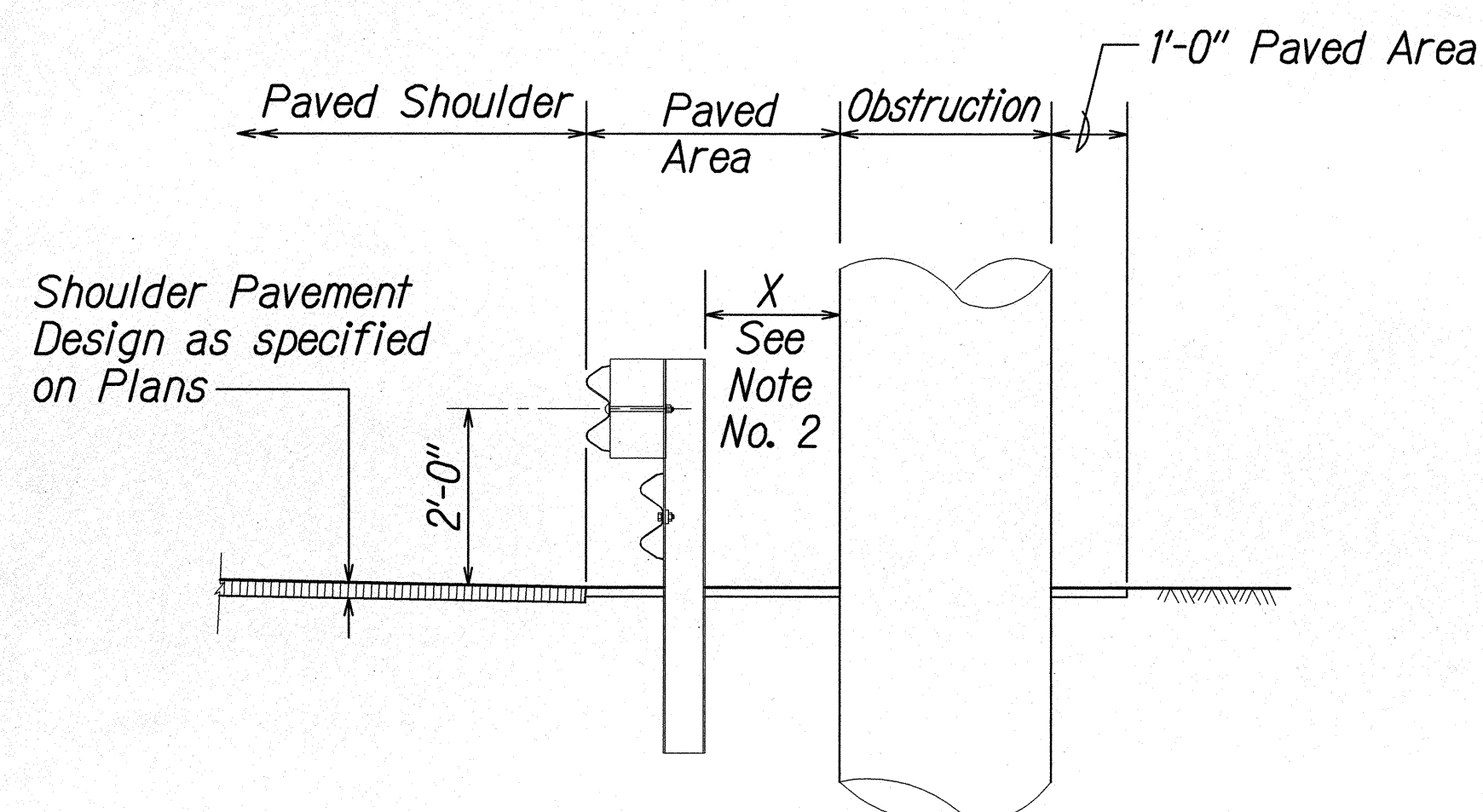
PLAN



ELEVATION

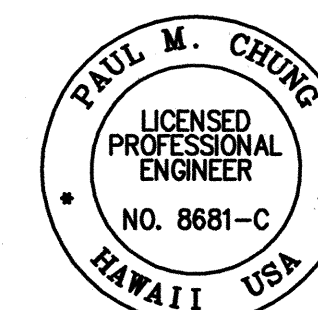
NOTES:

1. All Guardrail and Concrete Barrier Designs at Obstructions shall be approved by the Engineer.
2. If $X < 2'-0"$, Concrete Barrier or special guardrail design;
 $2'-0" \leq X < 3'-0"$, Strong Post Rubrail or Strong Post Thrie-Beam with reduced post spacing;
 $3'-0" \leq X$, Strong Post W-Beam with 6'-3" post spacing (Normal Installation).
3. If a pedestrian walkway or bicycle route is located behind the guardrail, the Engineer should install the Modified Thrie-Beam System. The Rubrail termini may become a hazard to pedestrians & bicyclists.



TYPICAL SECTION AT OBSTRUCTION

DETAIL OF GUARDRAIL INSTALLATION AT OBSTRUCTION



THIS WORK WAS PREPARED BY ME OR UNDER MY SUPERVISION

SIGNATURE: [Signature] EXPIRATION DATE OF THE LICENSE: 04/30/16

STATE OF HAWAII
DEPARTMENT OF TRANSPORTATION
HIGHWAYS DIVISION

RUBRAIL DETAILS

KALANIANA'OLE HIGHWAY IMPROVEMENTS, PHASE 1
Olomana Golf Course To Vicinity of Poalima St.
Federal Aid Project No. NH-072-1(53)

Scale: AS NOTED Date: July, 2015

SHEET No. C24 OF 71 SHEETS