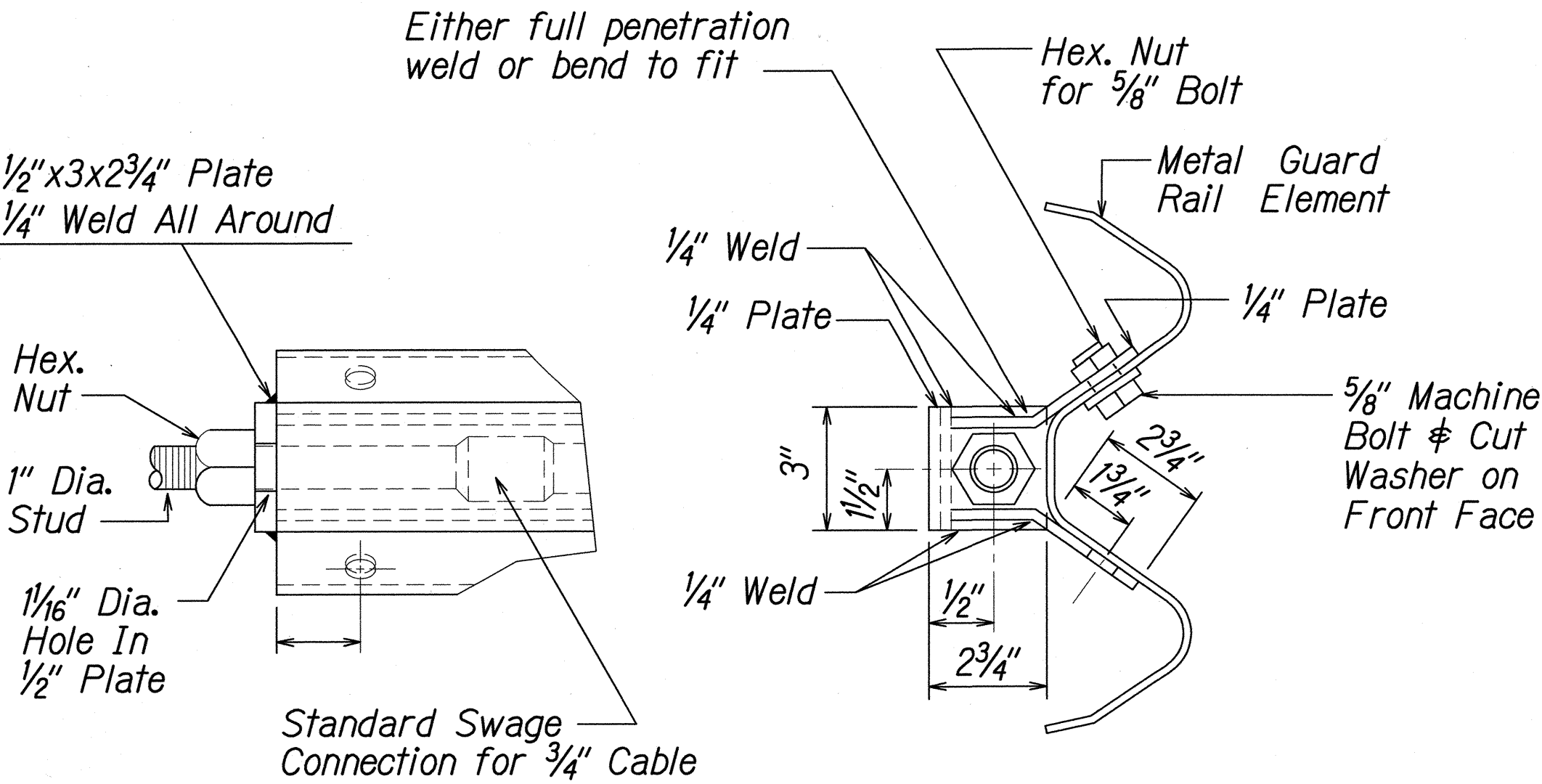
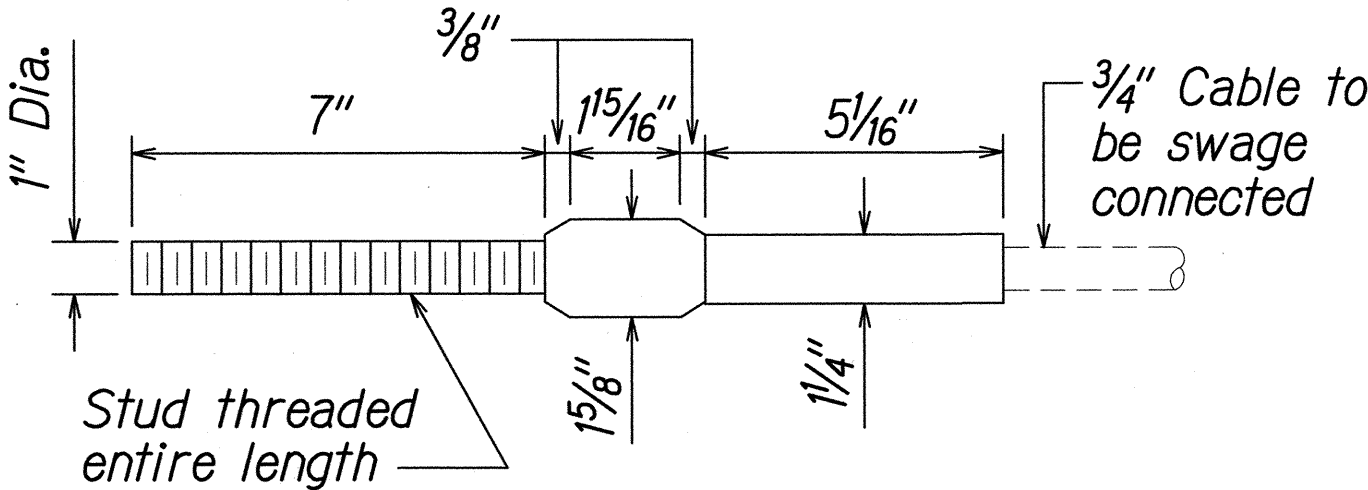


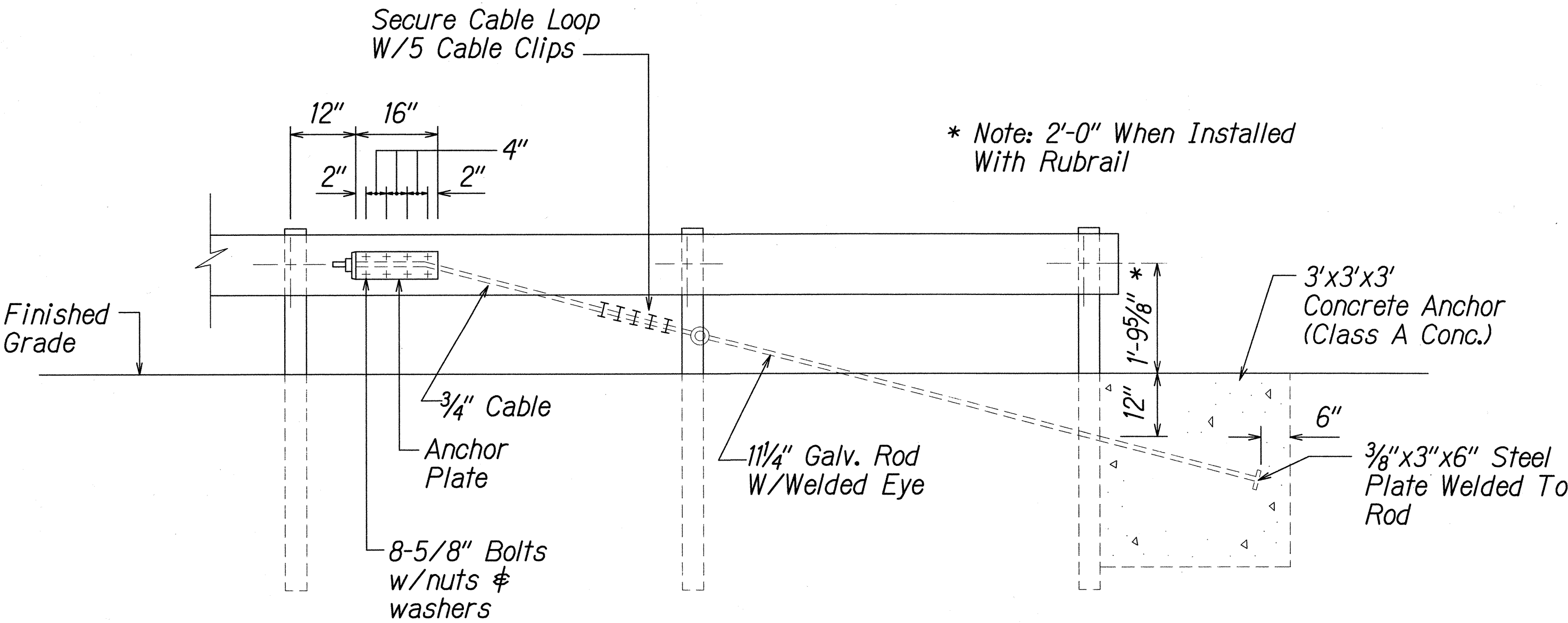
| FED. ROAD DIST. NO. | STATE | FED. AID PROJ. NO. | FISCAL YEAR | SHEET NO. | TOTAL SHEETS |
|---------------------|-------|--------------------|-------------|-----------|--------------|
| HAWAII | HAW. | NH-072-1(53) | 2015 | ADD. 22 | 117 |



ANCHOR PLATE DETAILS
Scale: N.T.S.

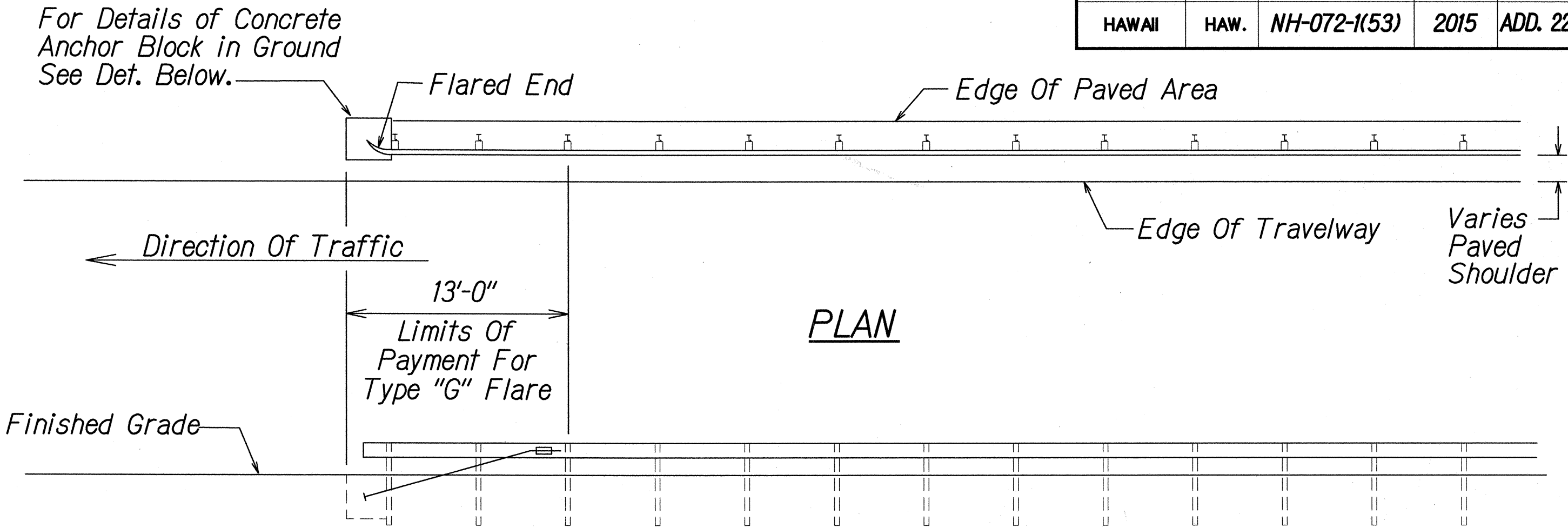


STANDARD SWAGED FITTING AND STUD
Scale: N.T.S.



ANCHOR BLOCK DETAIL
Scale: N.T.S.

- Concrete, G.R.P., excavation, anchor rod and miscellaneous appurtenances necessary to anchor the guardrail ends shall be incidental to metal guardrail.

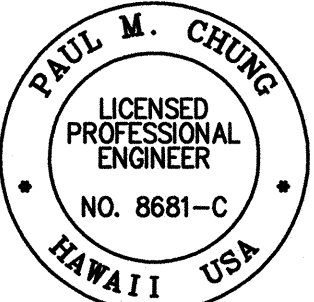


TYPE "G" FLARE END TERMINAL
Scale: N.T.S.

NOTE:
During construction, the Contractor shall layout the proposed Type "G" Modified End Terminal and receive approval from the Construction Engineer prior to installation.

| | |
|-------------------|--|
| DATE | 10/23/2015 |
| SURVEY PLOTTED BY | PH 1\022 - GUARDRAIL DETAILS TYPE G FLARE END TERMINAL.DWG |
| DRAWN BY | W:\CIVIL 3D PROJECTS\2008_008_000 DOT-HWY KAL HWY IMP WAIMANALO PH 1\022 - GUARDRAIL DETAILS TYPE G FLARE END TERMINAL.DWG |
| DESIGNED BY | |
| QUANTITIES BY | |
| CHECKED BY | |
| NOTE BOOK | |
| No. | |

W:\CIVIL 3D PROJECTS\2008_008_000 DOT-HWY KAL HWY IMP WAIMANALO PH 1\022 - GUARDRAIL DETAILS TYPE G FLARE END TERMINAL.DWG 10/23/2015 10:15 AM



THIS WORK WAS PREPARED BY ME OR UNDER MY SUPERVISION

SIGNATURE

04/30/16

EXPIRATION DATE OF THE LICENSE

| 10/23/15 | Revised Type "G" Flare End Terminal note. |
|---|---|
| DATE | REVISION |
| STATE OF HAWAII DEPARTMENT OF TRANSPORTATION HIGHWAYS DIVISION GUARDRAIL DETAILS TYPE G FLARE END TERMINAL KALANIANA'OLE HIGHWAY IMPROVEMENTS, PHASE 1 Olomana Golf Course To Vicinity of Poalima St. Federal Aid Project No. NH-072-1(53) Scale: AS NOTED Date: July, 2015 SHEET No. C22 OF 71 SHEETS | |