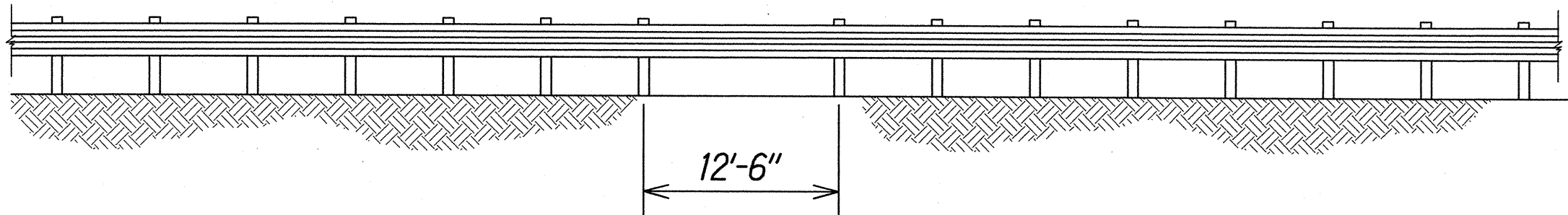
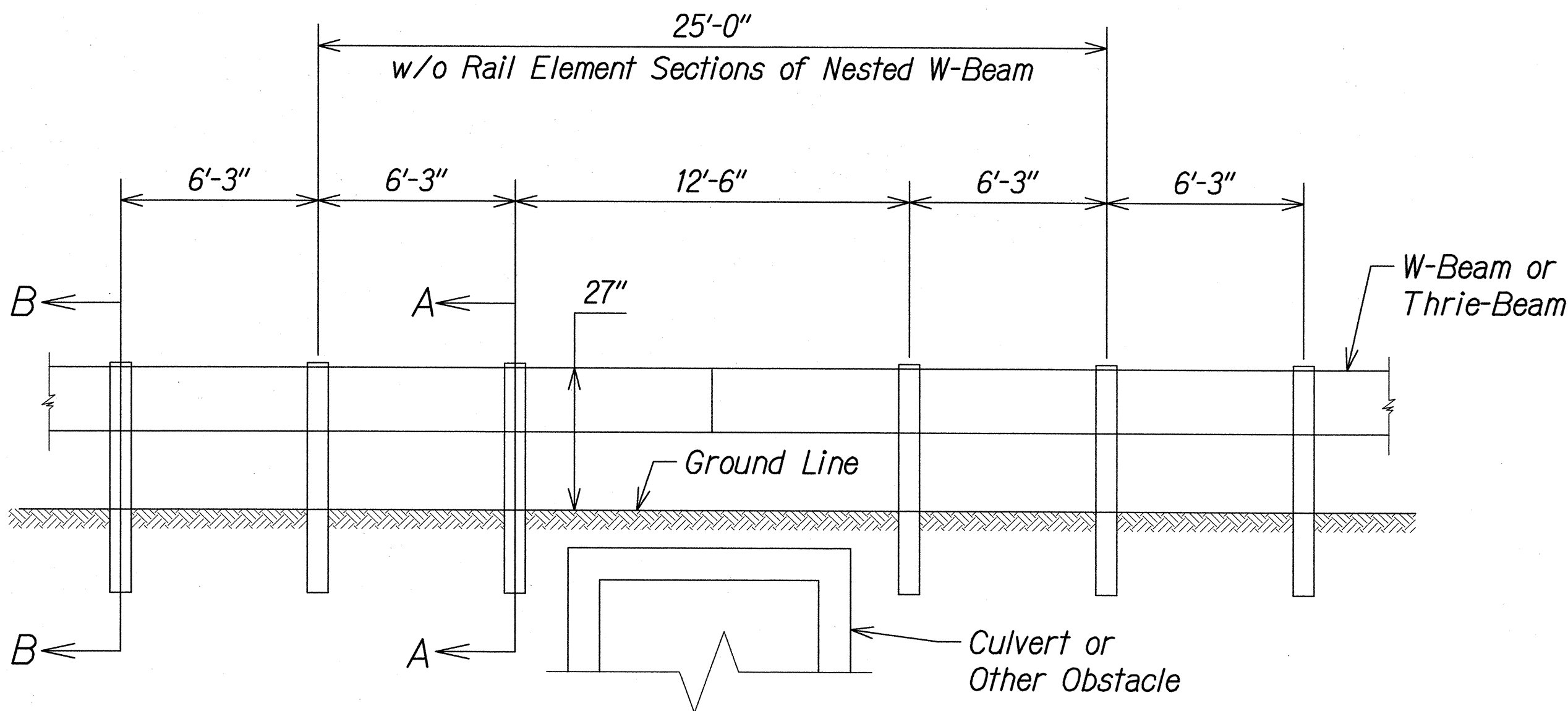


FED. ROAD DIST. NO.	STATE	FED. AID PROJ. NO.	FISCAL YEAR	SHEET NO.	TOTAL SHEETS
HAWAII	HAW.	NH-072-1(53)	2015	25	117

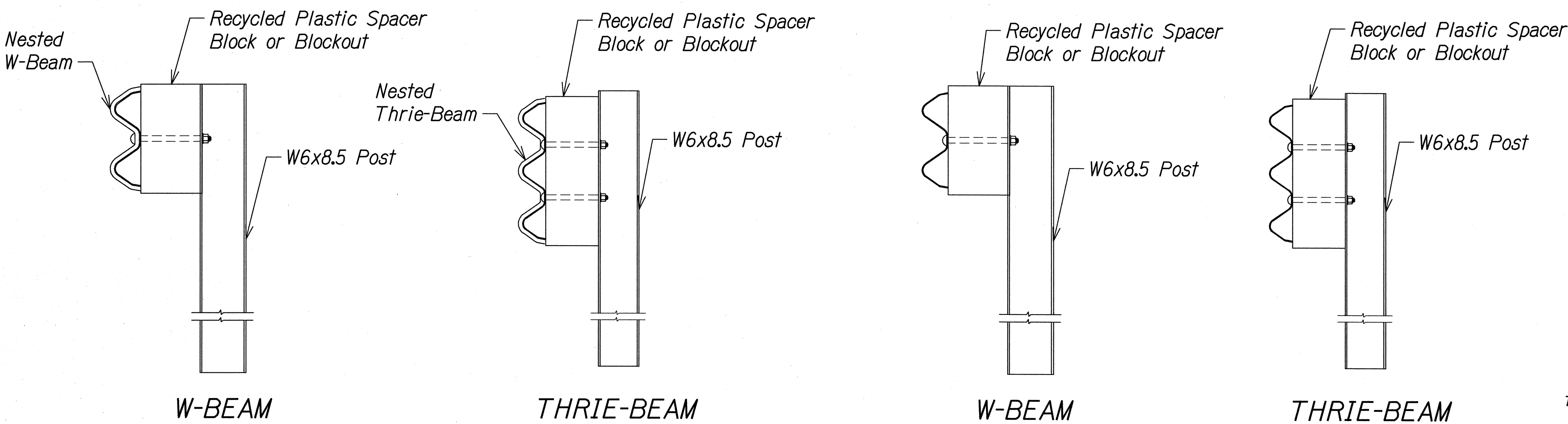


LONG SPAN OVER CULVERT



(SPlice IN CENTER OF 12'-6" SPACING)

**NESTED LONG SPAN STRONG POST**  
**W-BEAM OR THRIE-BEAM GUARDRAIL OVER 12'-6" CULVERT**  
**(MAXIMUM DYNAMIC DEFLECTION OF 3.1 FT.)**

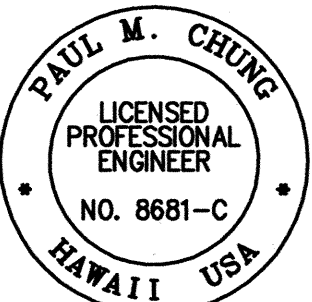


SECTION A-A

SECTION B-B

**NOTES:**

1. All Nested W-Beam/Thrie Beam spllices points shall be staggered.
2. All rail elements sections are 12'-6" and all posts are 6' Long for W-Beam and 6'-9" Long for Thrie Beam.



THIS WORK WAS PREPARED BY ME OR UNDER MY SUPERVISION

SIGNATURE *[Signature]* 04/30/16  
EXPIRATION DATE OF THE LICENSE

STATE OF HAWAII  
DEPARTMENT OF TRANSPORTATION  
HIGHWAYS DIVISION  
**DOUBLE NESTED W-BEAM & THRIE-BEAM GUARDRAIL DETAILS**  
KALANIANA'OLE HIGHWAY IMPROVEMENTS, PHASE 1  
Olomana Golf Course To Vicinity of Poalima St.  
Federal Aid Project No. NH-072-1(53)  
Scale: AS NOTED Date: July, 2015  
SHEET No. C25 OF 71 SHEETS

ORIGINAL PLAN	SURVEY PLOTTED BY	DATE
NOTE BOOK	DRAWN BY	
No.	DESIGNED BY	
	CHECKED BY	

W:\CIVIL 3D PROJECTS\2008\_008\_000 DOT-HWY KAL HWY IMP WAIMANALO PH 1\C25 - DOUBLE NESTED DETAIL.DWG 9/30/2015 5:03 PM