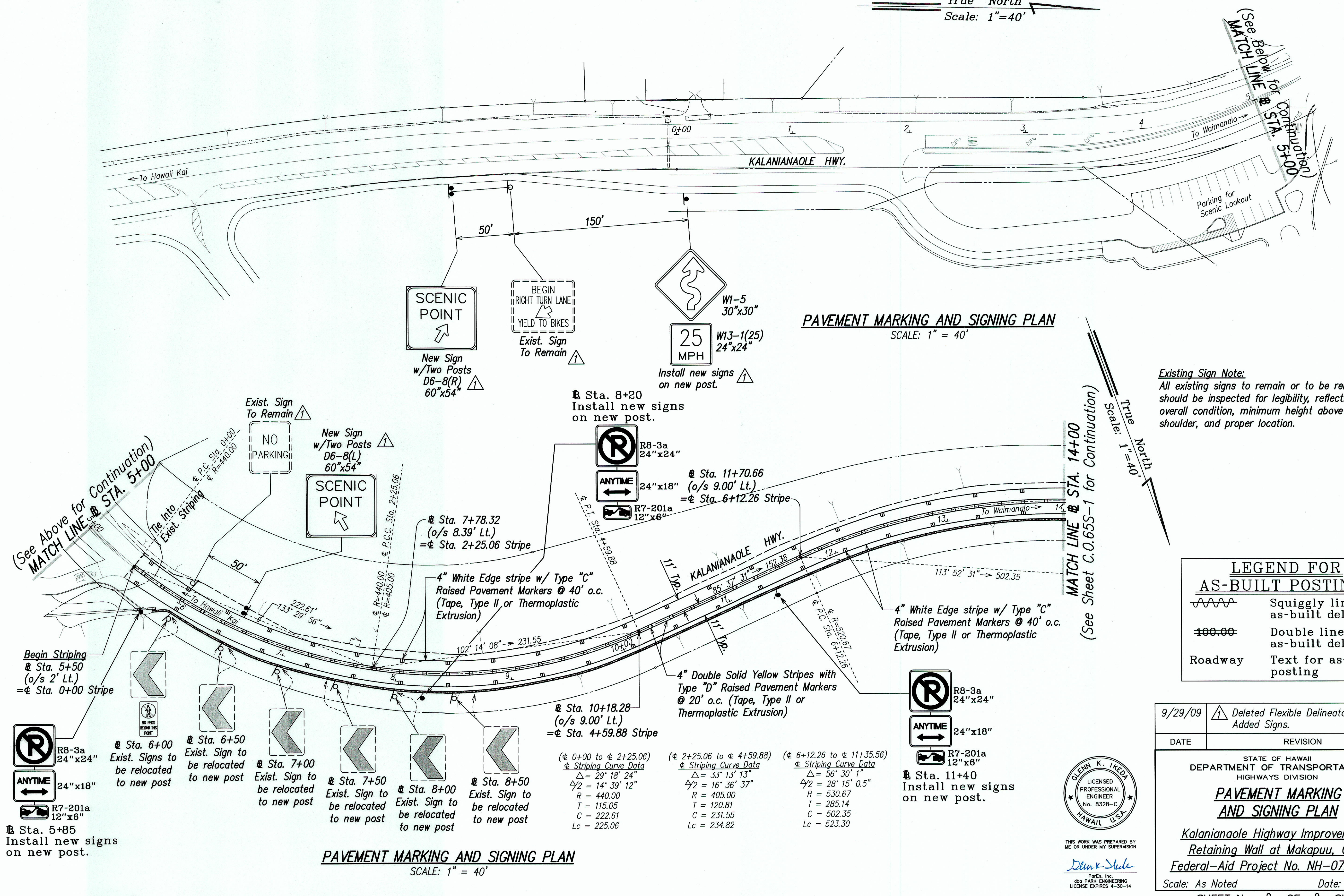


FED. ROAD DIST. NO.	STATE	FED. AID PROJ. NO.	FISCAL YEAR	SHEET NO.	TOTAL SHEETS
HAWAII	HAW.	NH-072-1(51)	2007	C.O.65	106

True North
Scale: 1"=40'



PAVEMENT MARKING AND SIGNING PLAN
SCALE: 1" = 40'

PAVEMENT MARKING AND SIGNING PLAN
SCALE: 1" = 40'

Existing Sign Note:
All existing signs to remain or to be relocated should be inspected for legibility, reflectivity, overall condition, minimum height above road shoulder, and proper location.

LEGEND FOR AS-BUILT POSTINGS

	Squiggly line for as-built deletion
	Double line for as-built deletion
	Text for as-built posting

9/29/09	
DATE	REVISION

STATE OF HAWAII
DEPARTMENT OF TRANSPORTATION
HIGHWAYS DIVISION

PAVEMENT MARKING AND SIGNING PLAN

Kalaniana'ole Highway Improvements Retaining Wall at Makapuu, Oahu
Federal-Aid Project No. NH-072-1(51)

Scale: As Noted Date: APR. 2007

SHEET No. 2 OF 2 SHEETS

GLENN K. IKEDA
LICENSED PROFESSIONAL ENGINEER
No. 8328-C
HAWAII, U.S.A.

THIS WORK WAS PREPARED BY ME OR UNDER MY SUPERVISION

Devin K. Slide
PofEn, Inc.
280 PARK ENGINEERING
LICENSE EXPIRES 4-30-14

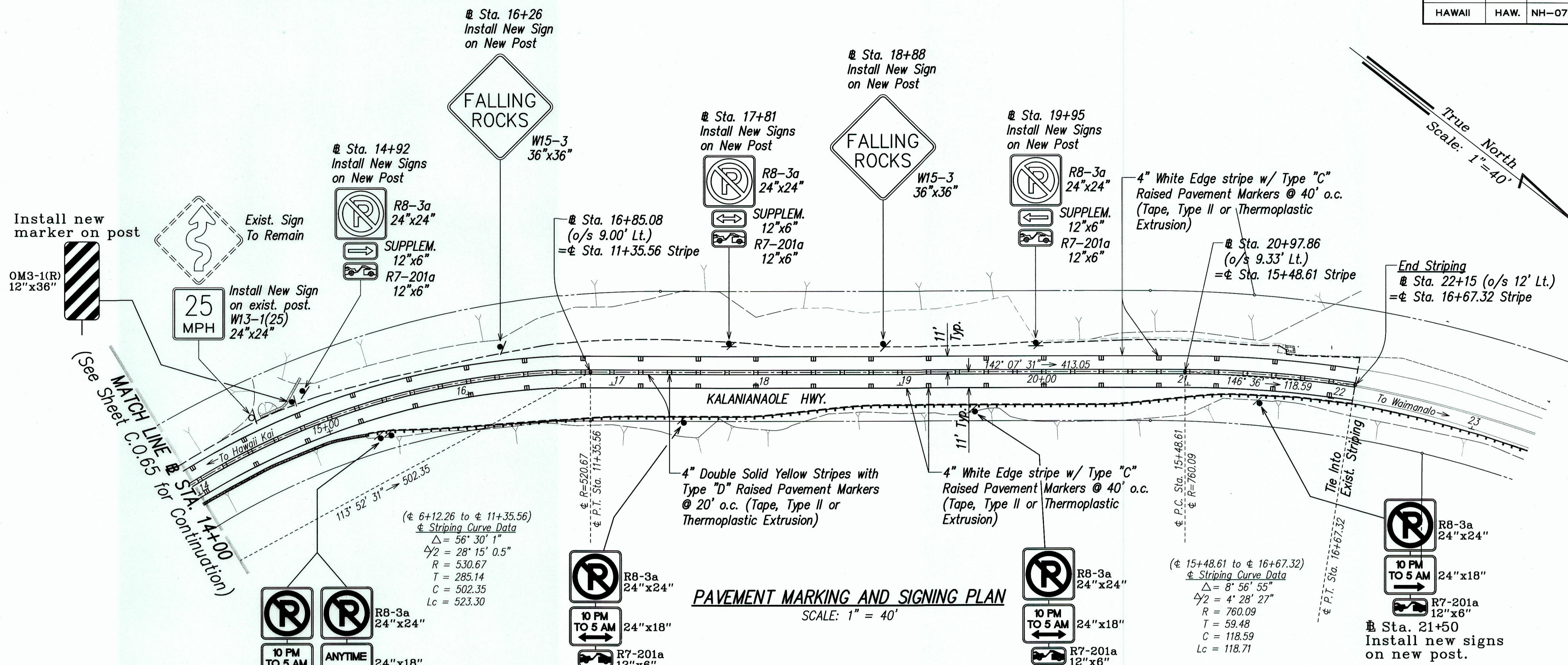
ORIGINAL PLAN	DATE
SURVEY PLOTTED BY	
DRAWN BY	
DESIGNED BY	
QUANTITIES BY	
CHECKED BY	

LIB2: STATE DOT KALANIANA'OLE RETAINING WALL (CO-1), KALPW_CO1-65-STRIPLN.dwg 9/28/09

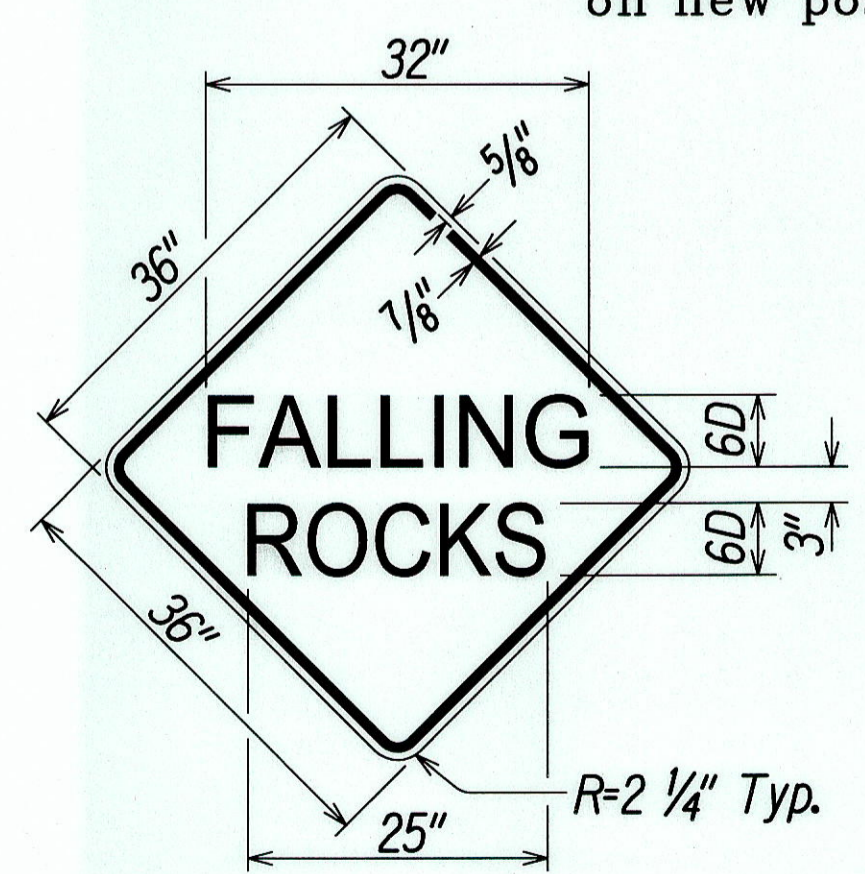
"AS-BUILT"

C.O. 65

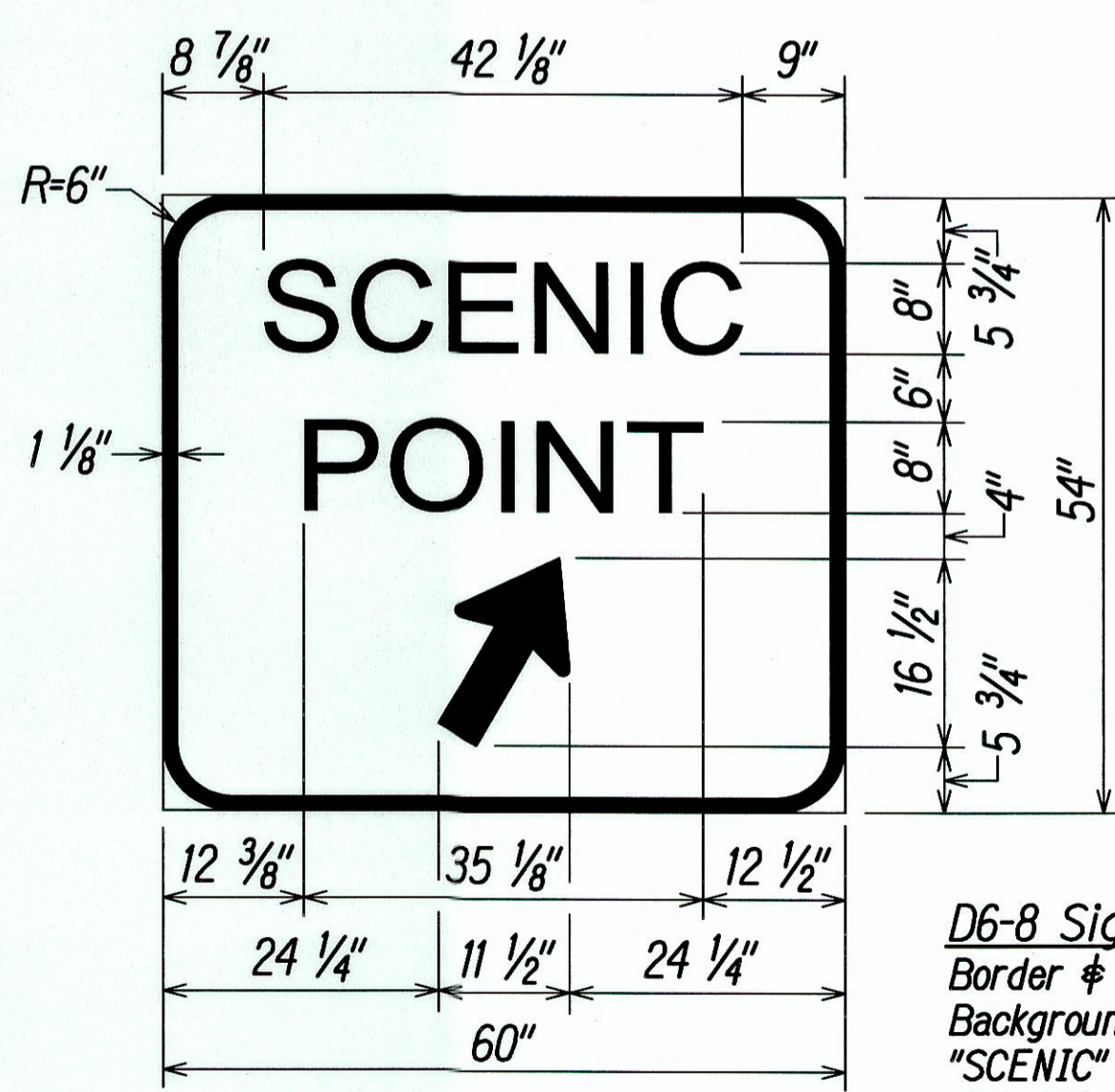
FED. ROAD DIST. NO.	STATE	FED. AID PROJ. NO.	FISCAL YEAR	SHEET NO.	TOTAL SHEETS
HAWAII	HAW.	NH-072-1(51)	2007	C.O.65 S-1	106



PAVEMENT MARKING AND SIGNING PLAN
SCALE: 1" = 40'



NEW SIGN (W15-3) DETAIL
SCALE: 1"=1'-0"



NEW SIGN (D6-8) DETAIL
SCALE: 3/4"=1'-0"

LEGEND FOR AS-BUILT POSTINGS

	Squiggly line for as-built deletion
	Double line for as-built deletion
	Text for as-built posting

D6-8 Sign Notes:
Border & Legend - White
Background - Blue
"SCENIC" ClearviewHwy-4W
"POINT" ClearviewHwy-4W
Standard Arrow Custom 17.875" x 10.875" at 60°
(L) Arrow Pointing Left
(R) Arrow Pointing Right
Provide Two Posts

All existing signs to remain or to be relocated should be inspected for legibility, reflectivity, overall condition, minimum height above road shoulder, and proper location.

DATE	
SURVEY PLOTTED BY	
DRAWN BY	
DESIGNED BY	
QUANTITIES BY	
CHECKED BY	
NOTE BOOK	
ORIGINAL PLAN	

LIB2: STATE DOT KALANIANA'OLE RETAINING WALL CO-1, KALRW_CO-1-65-S1-STRPLN.dwg 9/29/09



THIS WORK WAS PREPARED BY ME OR UNDER MY SUPERVISION
Glenn K. Ikeda
Park, Inc.
dba PARK ENGINEERING
LICENSE EXPIRES 4-30-14

9/29/09 New Sheet.

DATE	REVISION

STATE OF HAWAII
DEPARTMENT OF TRANSPORTATION
HIGHWAYS DIVISION

PAVEMENT MARKING AND SIGNING PLAN

*Kalaniana'ole Highway Improvements
Retaining Wall at Makapuu, Oahu
Federal-Aid Project No. NH-072-1(51)*

Scale: As Noted Date: APR. 2007

SHEET No. 2 OF 2 SHEETS

"AS-BUILT"

C.O. 65S-1