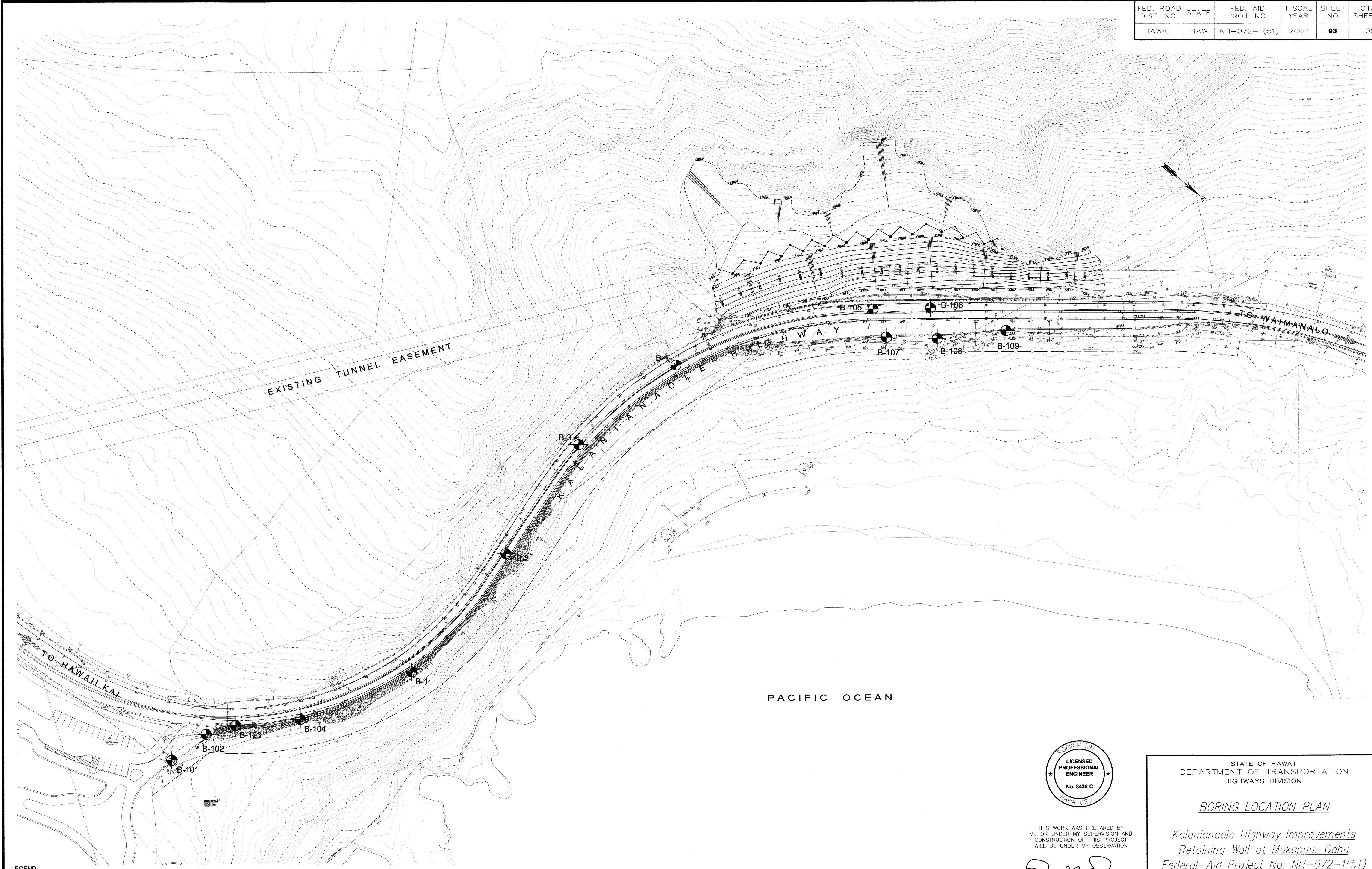
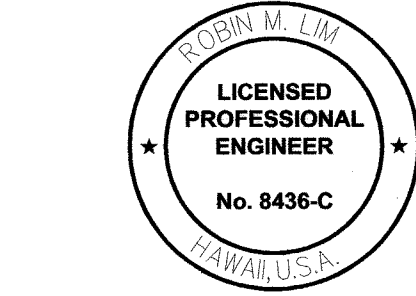
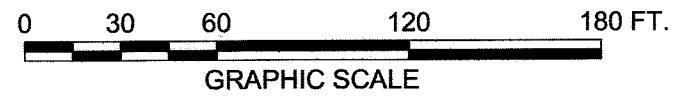


FED. ROAD DIST. NO.	STATE	FED. AID PROJ. NO.	FISCAL YEAR	SHEET NO.	TOTAL SHEETS
HAWAII	HAW.	NH-072-1(51)	2007	93	106



ORIGINAL PLAN	SURVEY PLOTTED BY	DATE
NOTE BOOK	DESIGNED BY	
QUANTITIES BY	CHECKED BY	
No.		

LEGEND:
● APPROXIMATE BORING LOCATION
REFERENCE: TOPOGRAPHIC DRAWINGS PROVIDED BY PARK ENGINEERING ON OCTOBER 11, 2001.



THIS WORK WAS PREPARED BY ME OR UNDER MY SUPERVISION AND CONSTRUCTION OF THIS PROJECT WILL BE UNDER MY OBSERVATION

SIGNATURE: *Robin M. Lim*
EXPIRATION DATE OF THE LICENSE: 4-30-08
GEOLABS, INC.

STATE OF HAWAII
DEPARTMENT OF TRANSPORTATION
HIGHWAYS DIVISION

BORING LOCATION PLAN

Kalaniana'ole Highway Improvements
Retaining Wall at Makapuu, Oahu
Federal-Aid Project No. NH-072-1(51)

Scale: As Noted Date: April 2007

SHEET No. B-1 OF 14 SHEETS