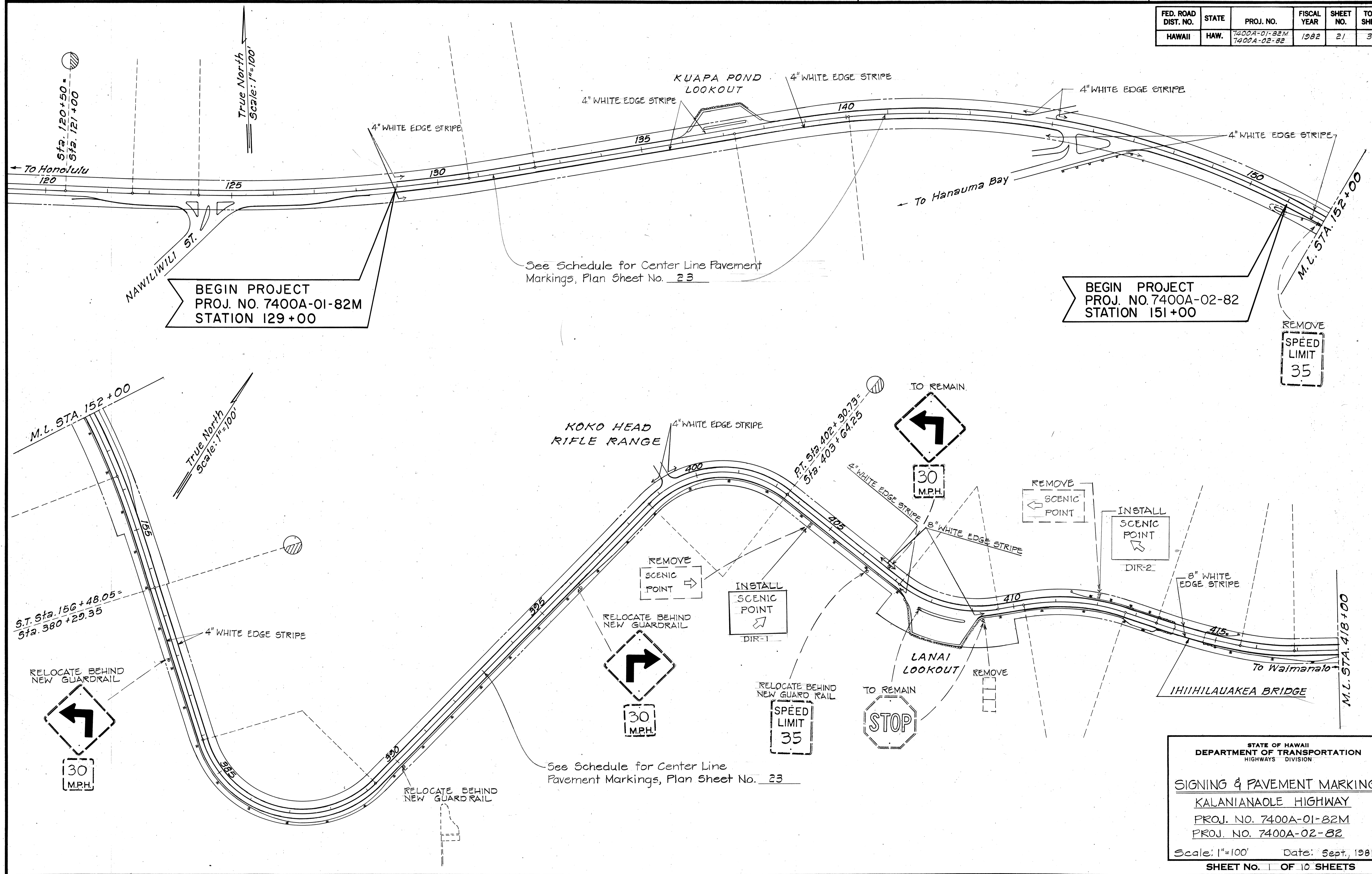


| FED. ROAD DIST. NO. | STATE | PROJ. NO.                   | FISCAL YEAR | SHEET NO. | TOTAL SHEETS |
|---------------------|-------|-----------------------------|-------------|-----------|--------------|
| HAWAII              | HAW.  | 7400A-01-82M<br>7400A-02-82 | 1982        | 21        | 30           |



BEGIN PROJECT  
 PROJ. NO. 7400A-01-82M  
 STATION 129+00

BEGIN PROJECT  
 PROJ. NO. 7400A-02-82  
 STATION 151+00

REMOVE  
 SPEED  
 LIMIT  
 35

See Schedule for Center Line  
 Pavement Markings, Plan Sheet No. 23

See Schedule for Center Line  
 Pavement Markings, Plan Sheet No. 23

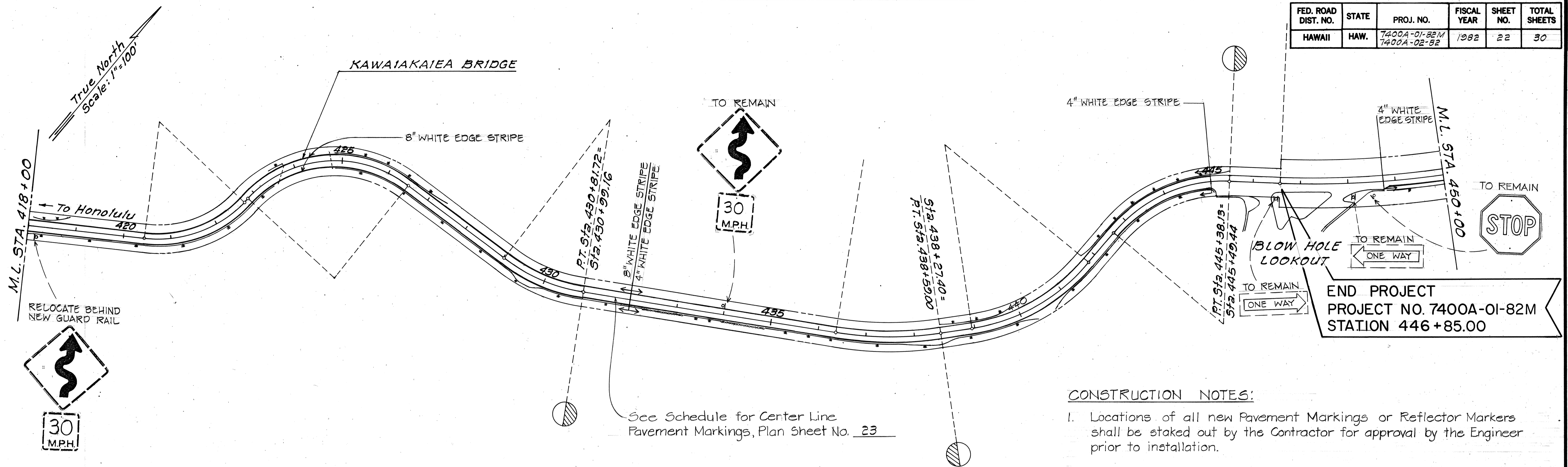
STATE OF HAWAII  
 DEPARTMENT OF TRANSPORTATION  
 HIGHWAYS DIVISION

**SIGNING & PAVEMENT MARKING**  
 KALANIANA'OLE HIGHWAY  
 PROJ. NO. 7400A-01-82M  
 PROJ. NO. 7400A-02-82

Scale: 1"=100' Date: Sept, 1981  
 SHEET No. 21 OF 10 SHEETS

DATE: \_\_\_\_\_  
 SURVEY PROVIDED BY: \_\_\_\_\_  
 DRAWN BY: \_\_\_\_\_  
 DESIGNED BY: \_\_\_\_\_  
 QUANTITIES BY: \_\_\_\_\_  
 CHECKED BY: \_\_\_\_\_

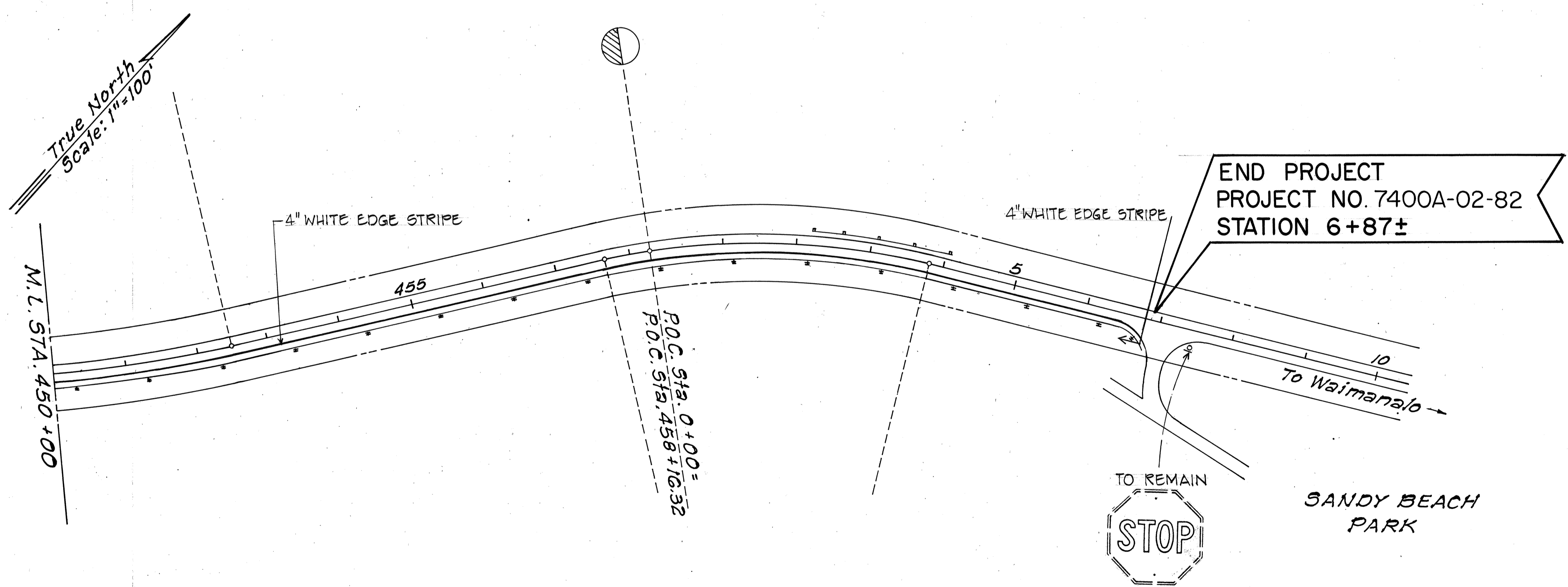
| FED. ROAD DIST. NO. | STATE | PROJ. NO.                   | FISCAL YEAR | SHEET NO. | TOTAL SHEETS |
|---------------------|-------|-----------------------------|-------------|-----------|--------------|
| HAWAII              | HAW.  | 7400A-01-82M<br>7400A-02-82 | 1982        | 22        | 30           |



END PROJECT  
PROJECT NO. 7400A-01-82M  
STATION 446+85.00

**CONSTRUCTION NOTES:**

1. Locations of all new Pavement Markings or Reflector Markers shall be staked out by the Contractor for approval by the Engineer prior to installation.
2. Existing Pavement Markings not incorporated in the final traffic pattern shall be removed as directed by the Engineer. Cost shall be incidental to the various Contract items.
3. For additional Pavement Marking details; see plan sheets nos. 29 & 30.
4. RM-1 Reflector Markers shall be installed behind the Guard Rail 2'-0" from the roadway edge of the Guard Rail and mounted a minimum of 4'-0" above the projected roadway as shown on the Standard Detail, except at the beginning of flares where, if installation is required, they shall be installed as close as possible to the end treatment.
5. RM-3 and RM-4 Reflector Markers shall be installed as shown on "Typical Delineation and Pavement Markings at Bridges," sheet nos. 23 & 25.
6. Relocation and Removal of existing signs and reflector markers including post and foundation shall not be paid for separately but shall be considered incidental to the various contract item in the proposal. All relocated signs shall be on new posts and their locations staked out by the Contractor for approval by the Engineer.



END PROJECT  
PROJECT NO. 7400A-02-82  
STATION 6+87±

STATE OF HAWAII  
DEPARTMENT OF TRANSPORTATION  
HIGHWAYS DIVISION

**SIGNING & PAVEMENT MARKING**

KALANIANA'OLE HIGHWAY

PROJ. NO. 7400A-01-82M  
PROJ. NO. 7400A-02-82

Scale: 1"=100' Date: Sept., 1981

SHEET No. 2 OF 10 SHEETS

|                   |      |
|-------------------|------|
| SURVEY PLOTTED BY | DATE |
| DRAWN BY          |      |
| DESIGNED BY       |      |
| QUANTITIES BY     |      |
| CHECKED BY        |      |
| ORIGINAL PLAN     |      |
| NOTE BOOK         |      |
| No.               |      |

SCHEDULE OF RM-1 REFLECTOR MARKERS MOUNTED ON GALVANIZED METAL POSTS

| STA.  |         | Q/S | SPACING   | TOTAL  |                |
|---|---------|-----|-----------|--------|----------------|
| BEGINNING   | END     |     |           | SINGLE | BI-DIRECTIONAL |
| 151+00±   | 156+40  | R   | 135' o.c. | 5      |                |
| 382+10  | —       | R   | —         | 1      |                |
| 383+30  | —       | R   | —         | 1      |                |
| 384+10  | 389+30  | R   | 40' o.c.  |        | 14             |
| 390+10  | —       | R   | —         | 1      |                |
| 391+30  | 394+90  | R   | 180' o.c. | 3      |                |
| 396+65  | —       | R   | —         | 1      |                |
| 397+85  | —       | R   | —         | 1      |                |
| 398+65  | 402+25  | R   | 40' o.c.  | 10     |                |
| 404+40  | —       | R   | —         | 1      |                |
| 405+60  | —       | R   | —         | 1      |                |
| 406+20  | —       | R   | —         | 1      |                |
| 407+15  | —       | R   | —         | 1      |                |
| 409+25  | —       | R   | —         | 1      |                |
| 409+75  | 412+35  | R   | 65' o.c.  | 5      |                |
| 413+55  | 411+35  | L   | 110' o.c. |        | 3              |
| 418+50±   | —       | L   | —         | 1      |                |
| BRIDGE END APPROACH (SEE SCHEDULE OF RM-3 & RM-4 REFLECTOR MARKERS) |         |     |           |        |                |
| 414+70  | 416+95  | R   | 75' o.c.  | 4      |                |
| 418+45  | —       | R   | —         | 1      |                |
| 419+65  | —       | R   | —         | 1      |                |
| 420+45  | 421+25  | R   | 40' o.c.  |        | 3              |
| 421+65  | 426+45  | R   | 40' o.c.  | 13     |                |
| BRIDGE END APPROACH (SEE SCHEDULE OF RM-3 & RM-4 REFLECTOR MARKERS) |         |     |           |        |                |
| 427+00  | 425+00  | L   | 40' o.c.  |        | 6              |
| 427+25  | —       | R   | —         | 1      |                |
| 428+25  | —       | R   | —         |        | 1              |
| 429+05  | 429+55  | R   | 50' o.c.  |        | 2              |
| 430+05  | 430+55  | R   | 50' o.c.  | 2      |                |
| 431+55  | —       | R   | —         | 1      |                |
| 433+05  | —       | R   | —         | 1      |                |
| 434+85  | —       | R   | —         | 1      |                |
| 436+35  | 438+60  | —   | —         |        |                |
|   | 438+30± | R   | 75' o.c.  | 4      |                |
| 438+95  | 440+05  | R   | 55' o.c.  | 3      |                |
| 440+90  | 442+00  | R   | 55' o.c.  | 3      |                |
| 442+00  | —       | L   | —         |        | 1              |
| 442+50  | 445+00  | R   | 50' o.c.  | 6      |                |
| 442+50  | 445+00  | L   | 50' o.c.  |        | 6              |
| 448+75  | 452+50  | R   | 125' o.c. | 4      |                |
| 455+00  | —       | R   | —         | 1      |                |
| 456+80  | —       | R   | —         | 1      |                |
| 457+70  | —       | R   | —         | 1      |                |
| 0+45  | 4+05    | R   | 90' o.c.  | 5      |                |
| 5+25  | —       | R   | —         | 1      |                |
| 6+50±   | —       | R   | —         | 1      |                |

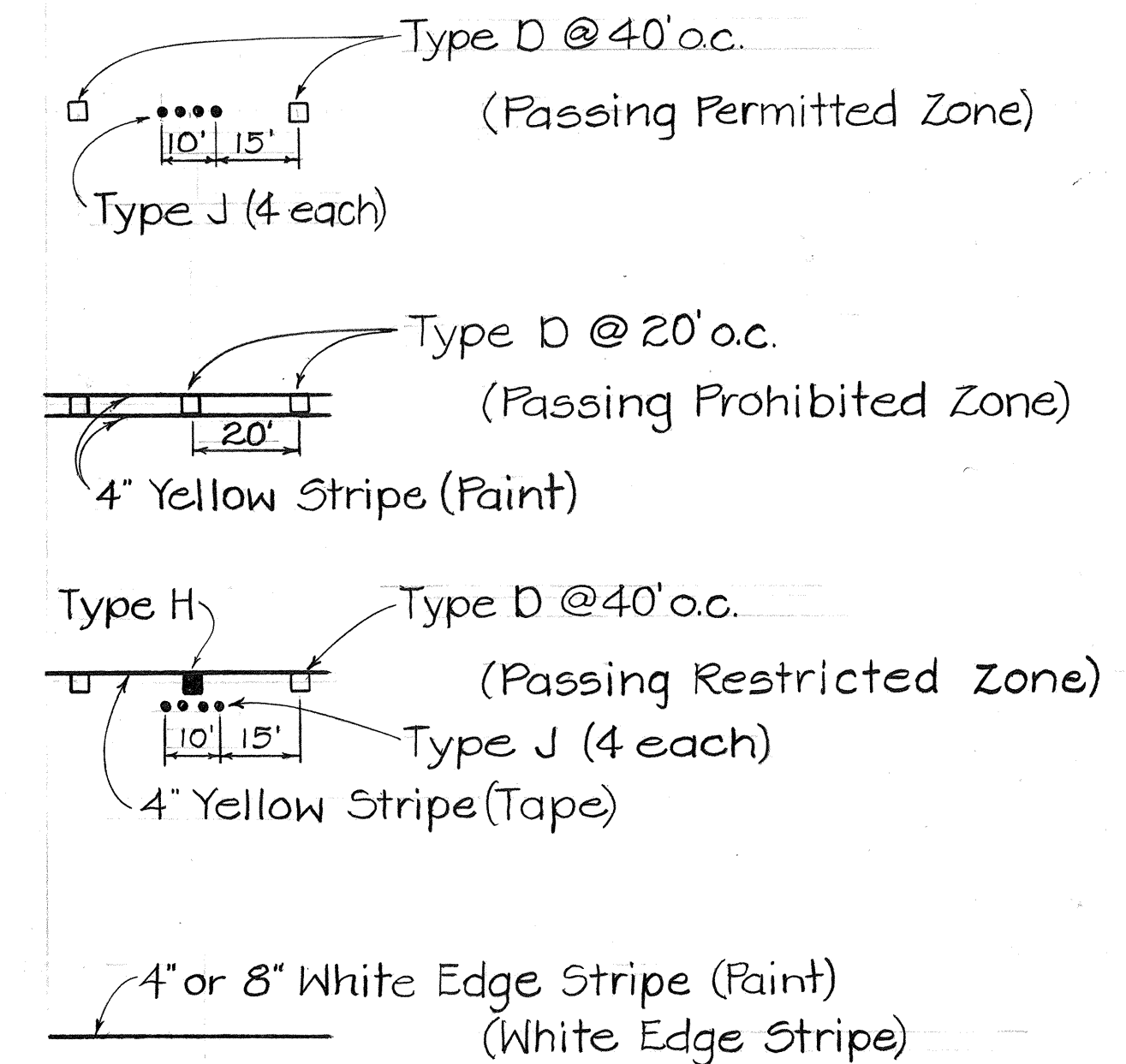
SCHEDULE OF RM-3 & RM-4 REFLECTOR MARKERS FOR BRIDGE END APPROACHES

| STA.      |        | Q/S | SPACING  | TOTAL |      |        |                |
|-----------|--------|-----|----------|-------|------|--------|----------------|
| BEGINNING | END    |     |          | RM-3  | RM-4 | SINGLE | BI-DIRECTIONAL |
| 412+60    | 413+35 | R   | 25' o.c. | 4     |      | ✓      |                |
| 413+60±   | —      | R   | —        |       | 1    | ✓      |                |
| 416+00    | 415+25 | L   | 25' o.c. | 4     |      | ✓      |                |
| 415+00    | —      | L   | —        |       | 1    | ✓      |                |
| 422+75    | 423+25 | L   | 50' o.c. | 2     |      |        | ✓              |
| 423+75    | —      | L   | —        |       | 1    | ✓      |                |

SCHEDULE OF CENTER LINE PAVEMENT MARKING FOR PROJ. NO. 7400A-01-82M

| STA.      |         | PAVEMENT MARKING (SEE LEGEND FOR MARKER TYPES) |                           |
|-----------|---------|--|---------------------------|
| BEGINNING | END     |  |                           |
| 129+00    | 140+00  | □ ... □  | (Passing Permitted Zone)  |
| 140+00    | 145+20± |  |                           |
| 145+60±   | 146+60± | ▬▬▬▬▬▬   | (Passing Prohibited Zone) |
| 147+05±   | 389+50  |  |                           |
| 389+50    | 393+00  | □ ... □  | (Passing Restricted Zone) |
| 393+00    | 398+00  | □ ... □  | (Passing Permitted Zone)  |
| 398+00    | 446+00  | ▬▬▬▬▬▬   | (Passing Prohibited Zone) |

LEGEND



- Type D Raised Pavement Markers
- Type H Raised Pavement Markers
- Type J Raised Pavement Markers

STATE OF HAWAII  
 DEPARTMENT OF TRANSPORTATION  
 LAND TRANSPORTATION FACILITIES DIVISION

**SCHEDULE OF REFLECTOR MARKERS AND STRIPING**

KALANIANA'OLE HIGHWAY  
 PROJ. NO. 7400A-01-82M  
 PROJ. NO. 7400A-02-82

Scale: \_\_\_\_\_ Date: Sept., 1981

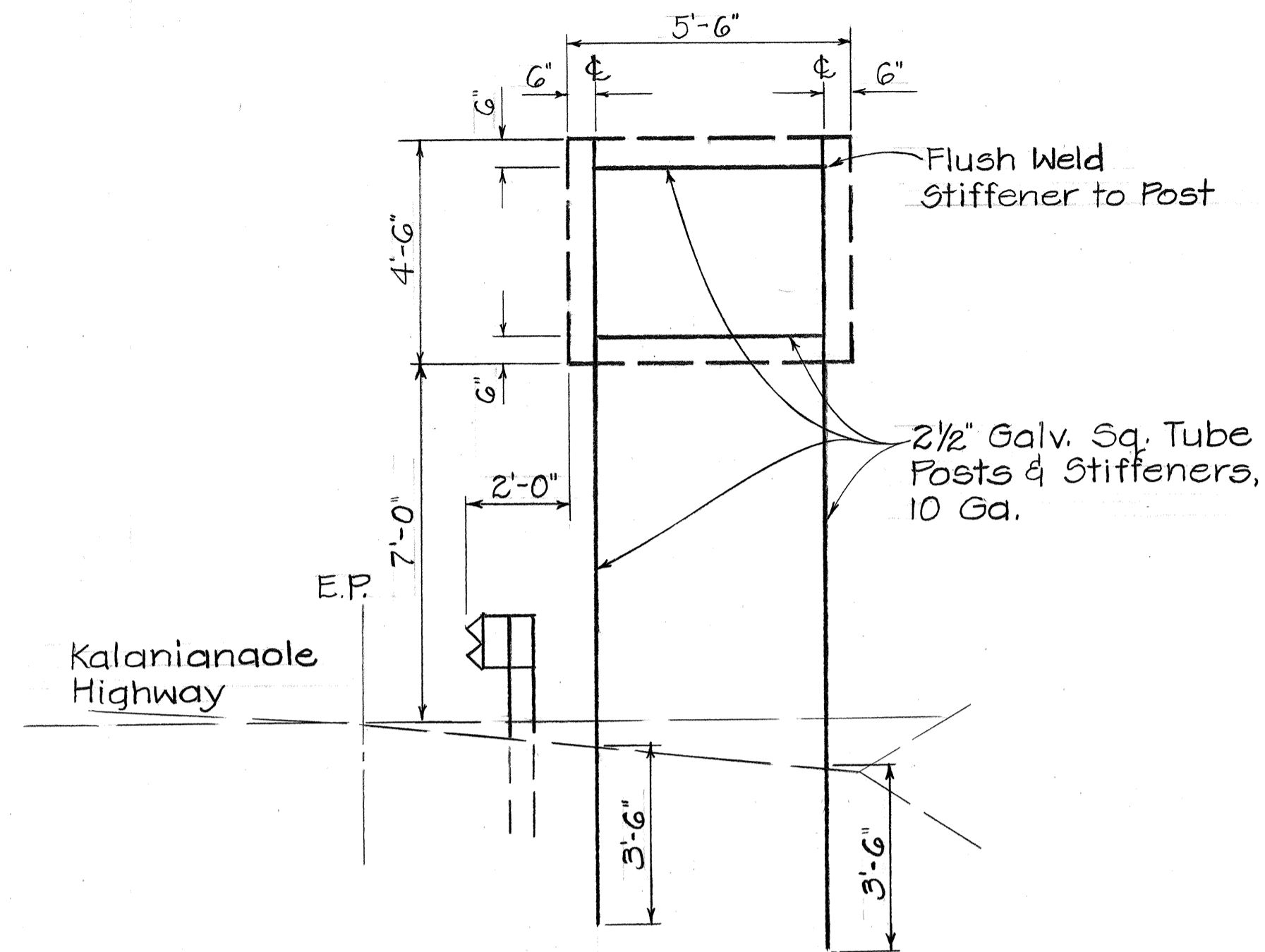
SHEET NO. 3 OF 10 SHEETS

ORIGINAL PLAN  
 SURVEY PLOTTED BY \_\_\_\_\_ DATE \_\_\_\_\_  
 DRAWN BY \_\_\_\_\_  
 DESIGNED BY \_\_\_\_\_  
 CHECKED BY \_\_\_\_\_  
 No. \_\_\_\_\_

| FED. ROAD DIST. NO. | STATE | PROJ. NO.                   | FISCAL YEAR | SHEET NO. | TOTAL SHEETS |
|---------------------|-------|-----------------------------|-------------|-----------|--------------|
| HAWAII              | HAW.  | 7400A-01-82M<br>7400A-02-82 | 1982        | 24        | 30           |

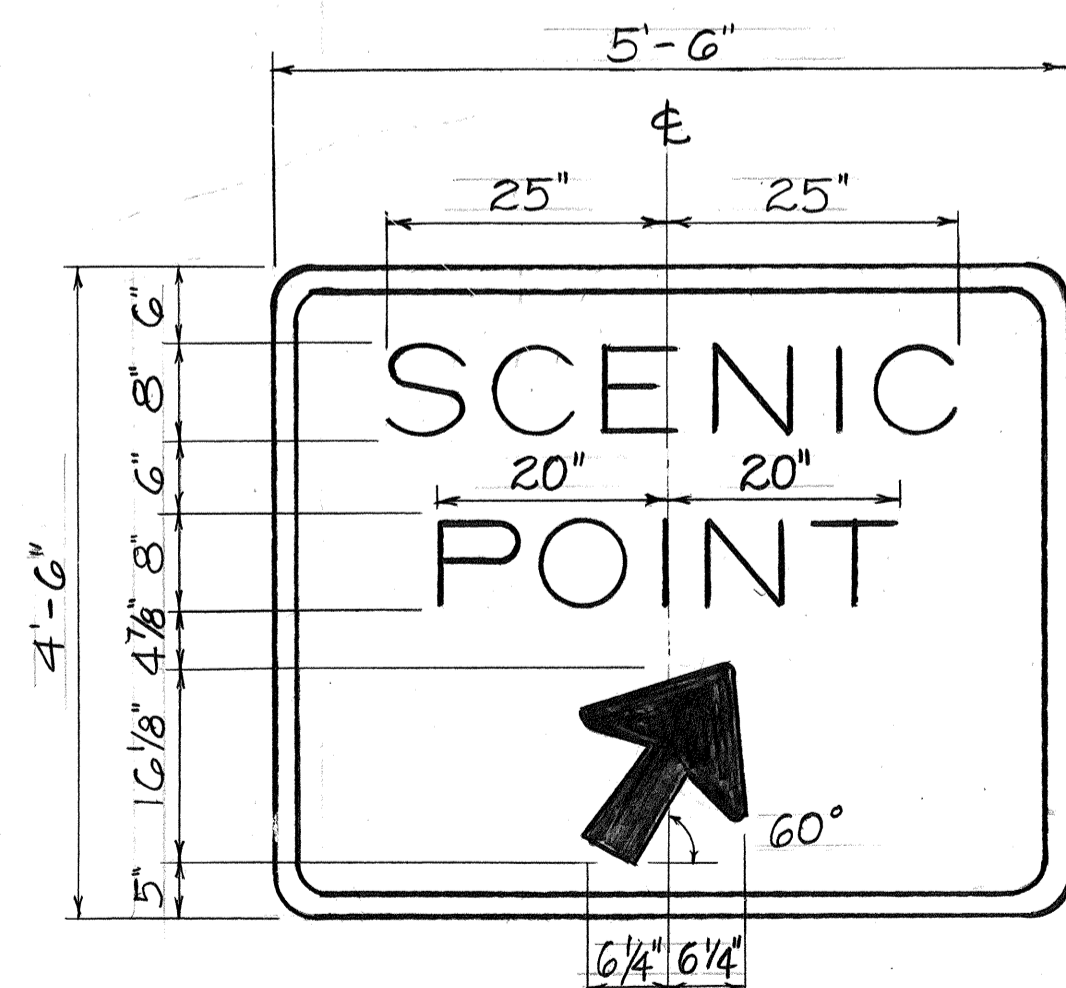
### GENERAL NOTES

- Directional Signs (DIR) shall conform to the latest Editions & Amendments of the following FHWA publications:
  - "Manual on Uniform Traffic Control Devices for Streets & Highways" (MUTCD)
  - "Standard Highway Signs", and
  - "Standard Alphabets for Highway Signs"
- Use Series "E" Upper Case Letters.
- Legends, Borders & Arrows shall be White Reflective Sheeting on a Green Reflective Sheeting Background.
- Borders shall be 2" wide and corner radii shall be approximately one-eighth of the lesser side dimension of the Sign Panel. Trim off area outside corner radii.
- Sign Panel shall be 0.100" thick sheet aluminum.
- Contractor shall submit all sign splicing details to the Engineer for approval.
- Sign Panels shall have  $\frac{3}{8}$ "  $\phi$  bolt holes drilled at appropriate locations and shall be attached to support w/  $\frac{5}{16}$ "  $\phi$  Galv. bolt, nut, lock washer &  $\frac{7}{8}$ " x 0.06" stainless steel flat washer w/neoprene rubber gasket.
- Final locations of Signs shall be determined in the field by the Engineer.



TYPICAL FRAME LAYOUT

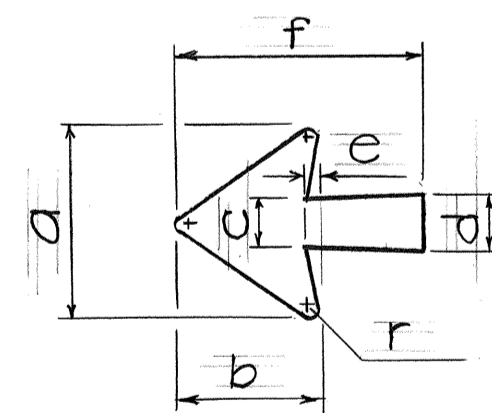
Scale:  $\frac{3}{8}$ " = 1'-0"



DIR-1 @ Sta. 404+55 Rt. (↗)

DIR-2 @ Sta. 412+00 Lt. (↖)

Scale:  $\frac{3}{4}$ " = 1'-0"



| OVERALL SIZE    | ARROW DIMENSIONS (INCHES) |         |       |       |        |        |     |
|-----------------|---------------------------|---------|-------|-------|--------|--------|-----|
|                 | a                         | b       | c     | d     | e      | f      | r   |
| 14 1/4 x 17 1/4 | 1 1/4                     | 0 13/16 | 3 3/8 | 4 1/2 | 1 5/16 | 17 1/4 | 3/4 |

ARROW DETAIL

Not to Scale

STATE OF HAWAII  
DEPARTMENT OF TRANSPORTATION  
LAND TRANSPORTATION FACILITIES DIVISION

PANEL & FRAME LAYOUTS  
FOR DIRECTIONAL SIGNS

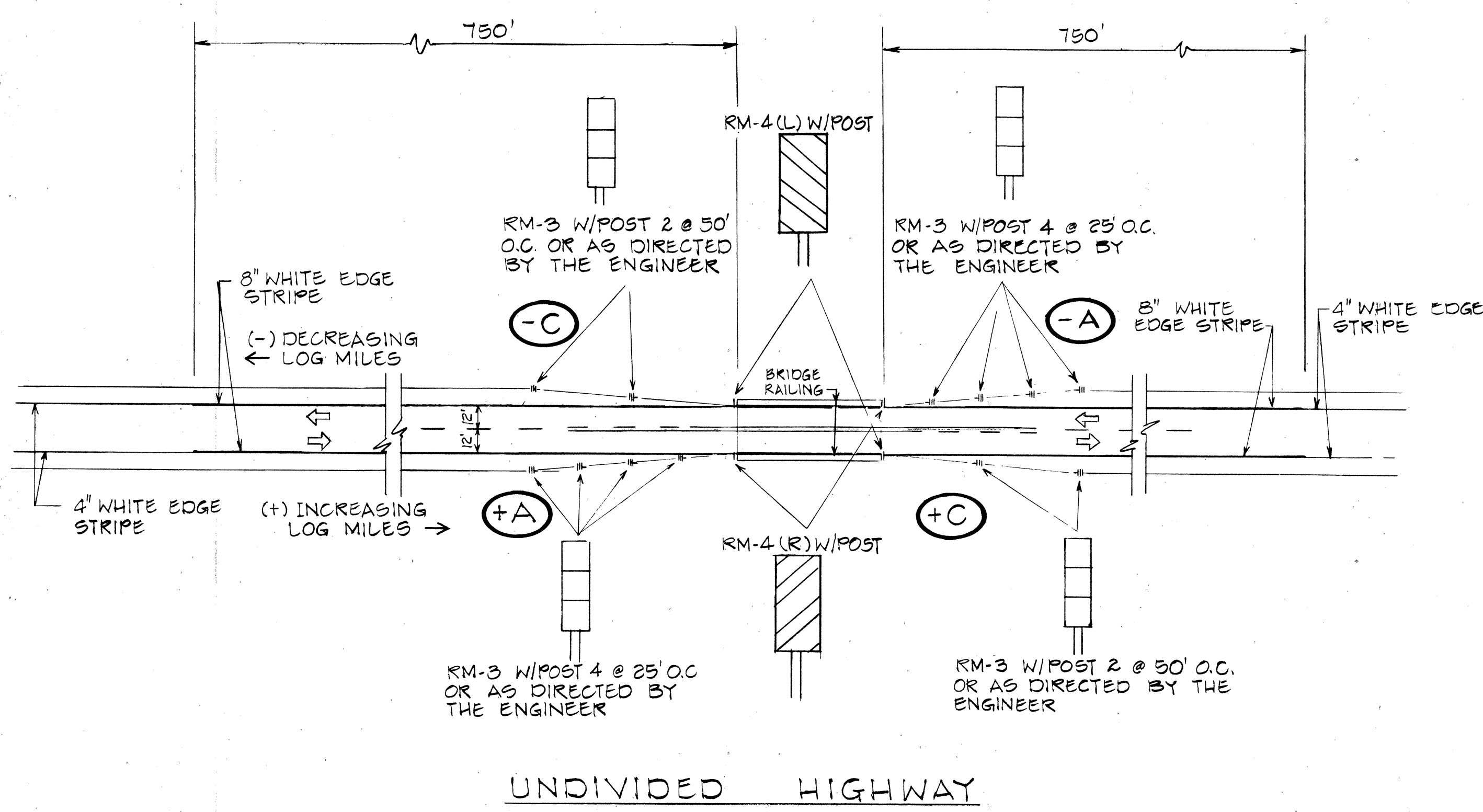
KALANIANAOLE HIGHWAY  
PROJ. NO. 7400A-01-82M  
PROJ. NO. 7400A-02-82

Scale: As Shown Date: Sept., 1981

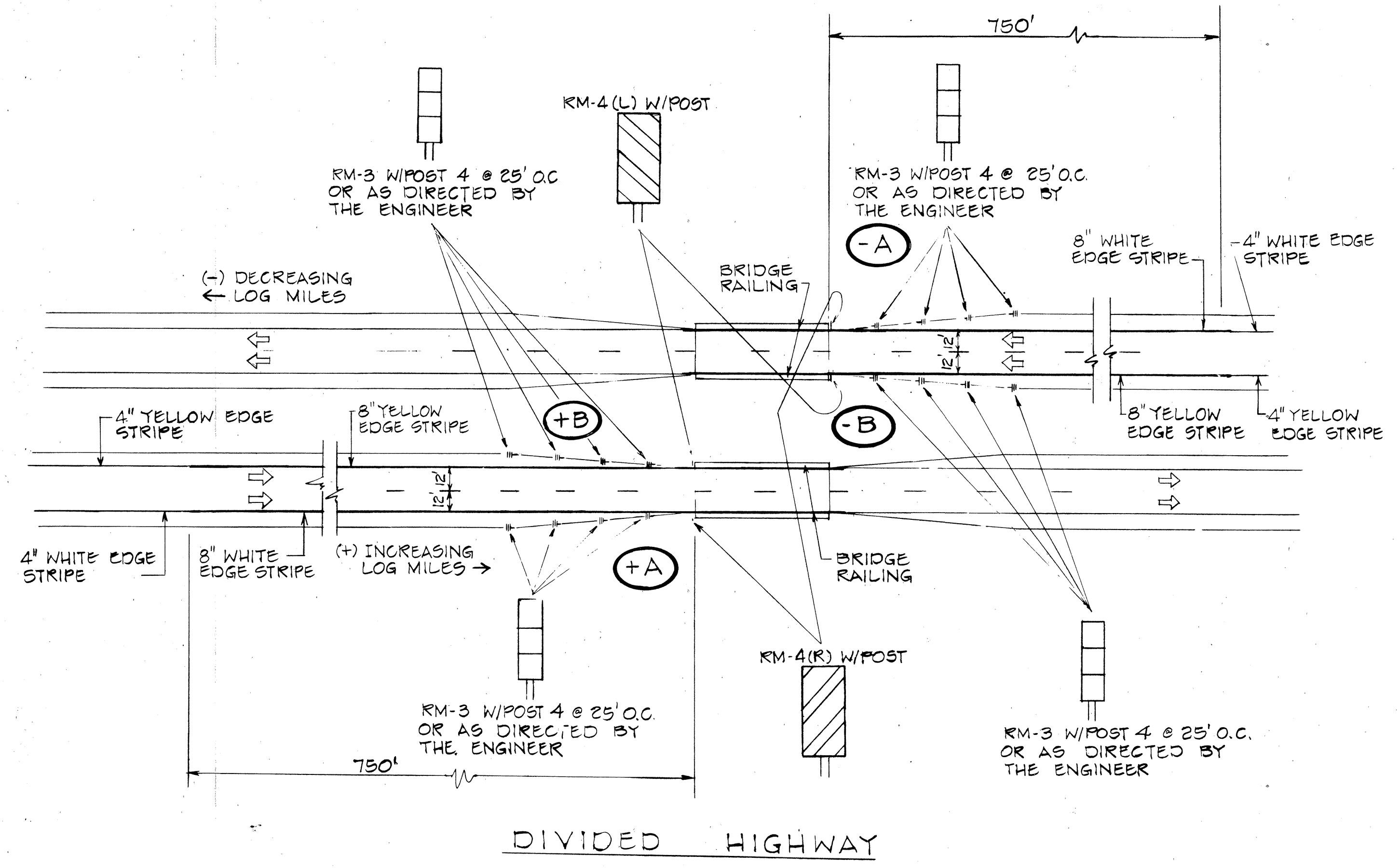
SHEET NO. 4 OF 10 SHEETS

|                   |      |
|-------------------|------|
| SURVEY PLOTTED BY | DATE |
| DRAWN BY          |      |
| TRACED BY         |      |
| DESIGNED BY       |      |
| CHECKED BY        |      |
| ORIGINAL PLAN     |      |
| NOTE BOOK         |      |
| No.               |      |

| FED. ROAD DIST. NO. | STATE | PROJ. NO.                   | FISCAL YEAR | SHEET NO. | TOTAL SHEETS |
|---------------------|-------|-----------------------------|-------------|-----------|--------------|
| HAWAII              | HAW.  | 7400A-01-82M<br>7400A-02-82 | 1982        | 25        | 30           |



NOTE: (+) INCREASING LOG MILES  
 (-) DECREASING LOG MILES  
 A DENOTES TYPE OF TREATMENT



NOTE: (+) INCREASING LOG MILES  
 (-) DECREASING LOG MILES  
 A DENOTES TYPE OF TREATMENT

**TYPICAL BRIDGE APPROACH DELINEATION CRITERIA**  
 Scale: 1" = 50'

STATE OF HAWAII  
 DEPARTMENT OF TRANSPORTATION  
 LAND TRANSPORTATION FACILITIES DIVISION

**TYPICAL DELINEATION AND PAVEMENT MARKINGS AT BRIDGES**

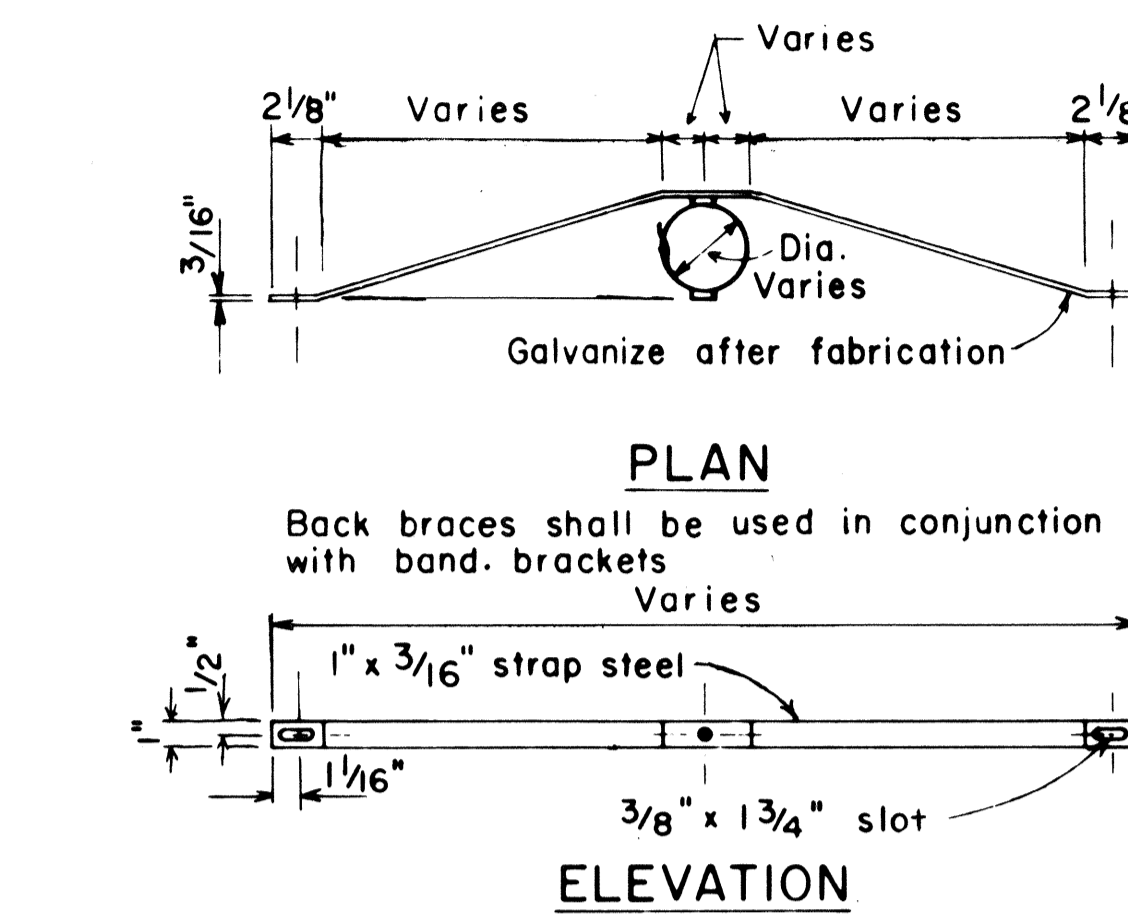
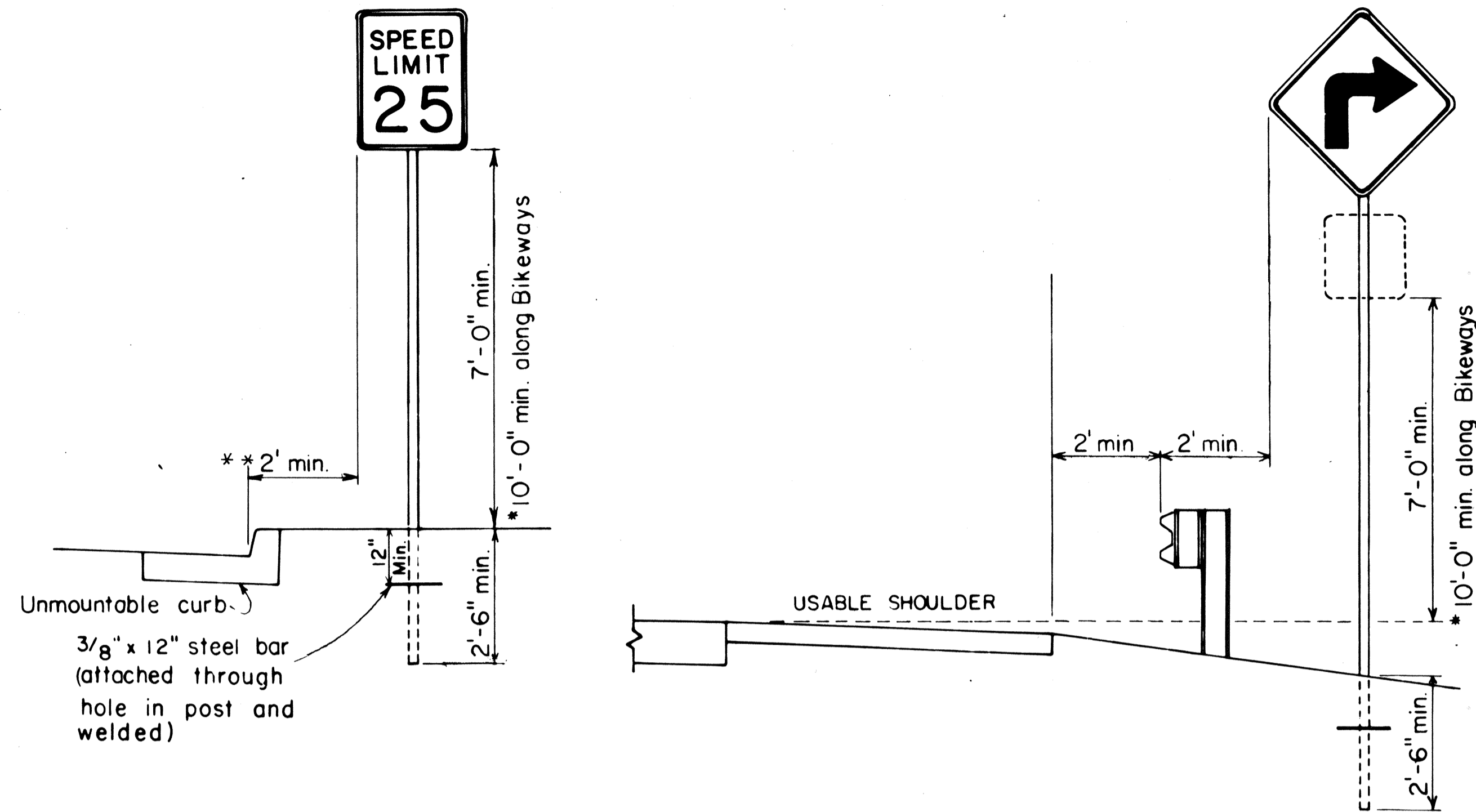
Scale: 1" = 50' Date: Sept, 1981  
 SHEET NO. 5 OF 10 SHEETS

SURVEY PLOTTED BY: \_\_\_\_\_  
 DATE: \_\_\_\_\_  
 DRAWN BY: \_\_\_\_\_  
 TRACED BY: \_\_\_\_\_  
 NOTE BOOK NO. \_\_\_\_\_  
 QUANTITIES BY: \_\_\_\_\_  
 CHECKED BY: \_\_\_\_\_

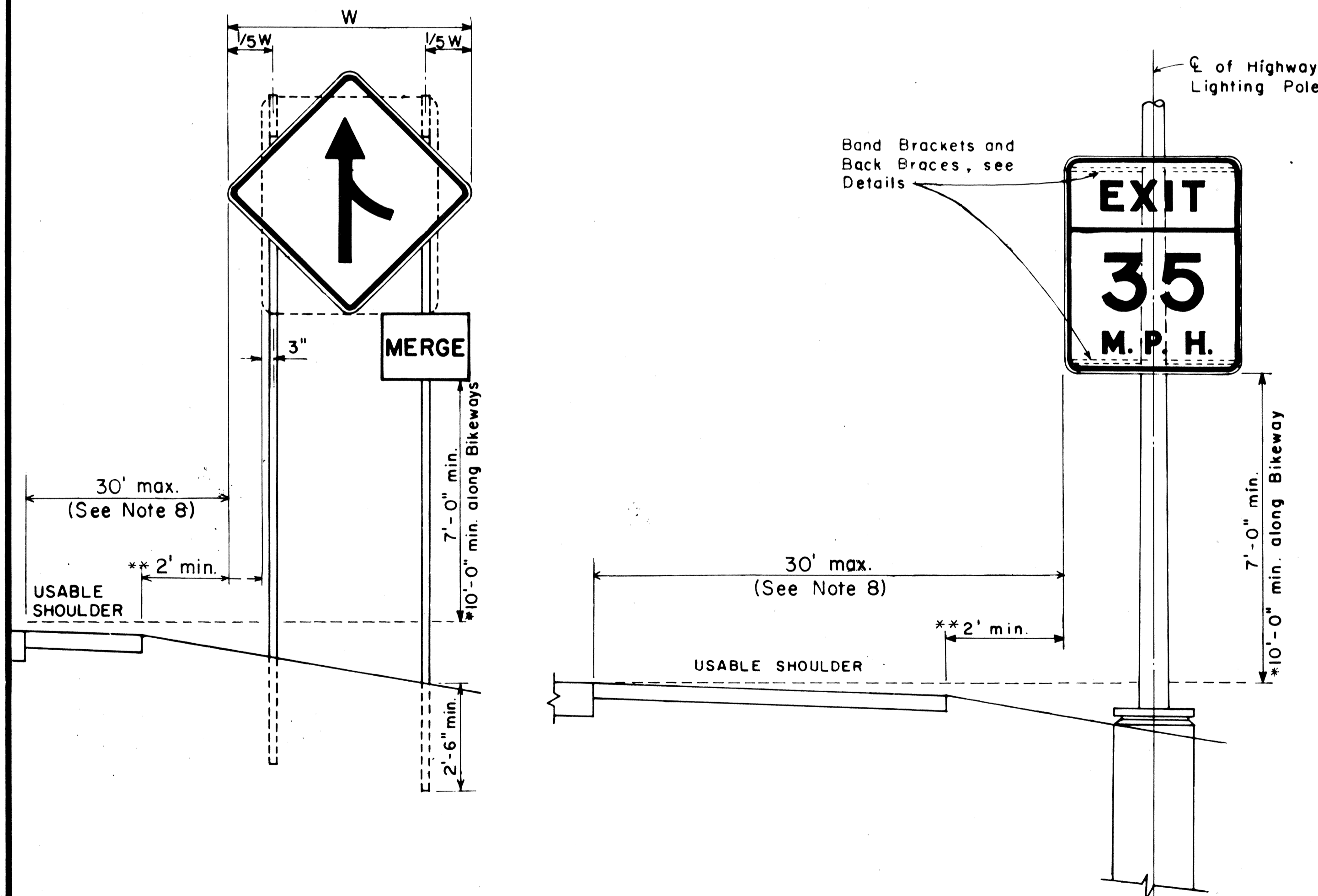
|                     |       |                             |             |           |              |
|---------------------|-------|-----------------------------|-------------|-----------|--------------|
| FED. ROAD DIST. NO. | STATE | PROJ. NO.                   | FISCAL YEAR | SHEET NO. | TOTAL SHEETS |
| HAWAII              | HAW.  | 1400A-01-B2M<br>1400A-02-82 | 1982        | 26        | 30           |

### GENERAL NOTES

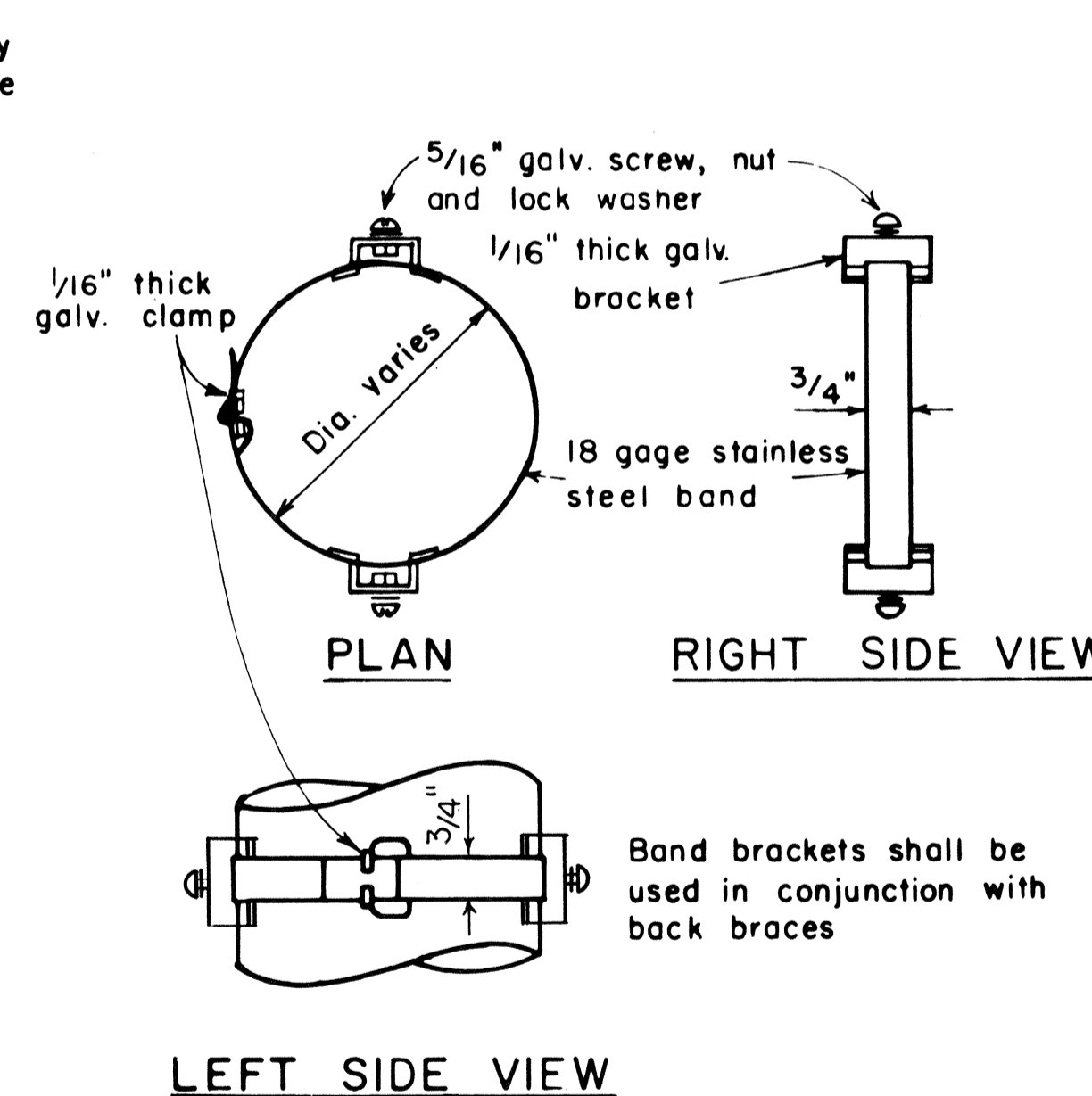
- Signs shall be placed in conformance with positions shown and described in the "Manual on Uniform Traffic Control Devices for Streets and Highways", 1978, Part II, Section 2A-21, as amended, and as supplemented herein.
- Signs 48" and wider or larger than 10 sq. ft. in area shall be mounted on two sign posts except as noted below.
- Signs 48" and wider or larger than 10 sq. ft. in area may be mounted on other than two sign posts (i.e. on highway lighting poles)
  - Signs larger than 10 sq. ft. and less than 28 sq. ft. in area shall be mounted with a minimum of two sets of band brackets and back braces.
  - Signs larger than 28 sq. ft. in area shall be mounted with a minimum of three sets of band brackets and back braces.
- All parking restriction signs with arrows shall be mounted 45° to the line of traffic flow.
- Sign posts shall extend 3 1/2" above each sign, where required, for attachment of City and County street name signs.
- (R) or (L) indicates right or left and shall be shown on the plans.
- See plans for special details.
- \* \* 8. The minimum lateral distances shown are guidelines and shall be exceeded whenever possible. The Contractor shall place signs at the maximum practical lateral distance from the edge of the traveled way up to 30 feet and shall utilize protected locations whenever possible. Final locations of all signs shall be approved by the Engineer.
- Signs in medians shall be placed at midpoint of median up to a maximum distance of 30 feet from the edge of traveled way. When appropriate, signs for opposing directions shall be placed back to back.



### BACK BRACE DETAILS FOR BALANCED SIGN INSTALLATION



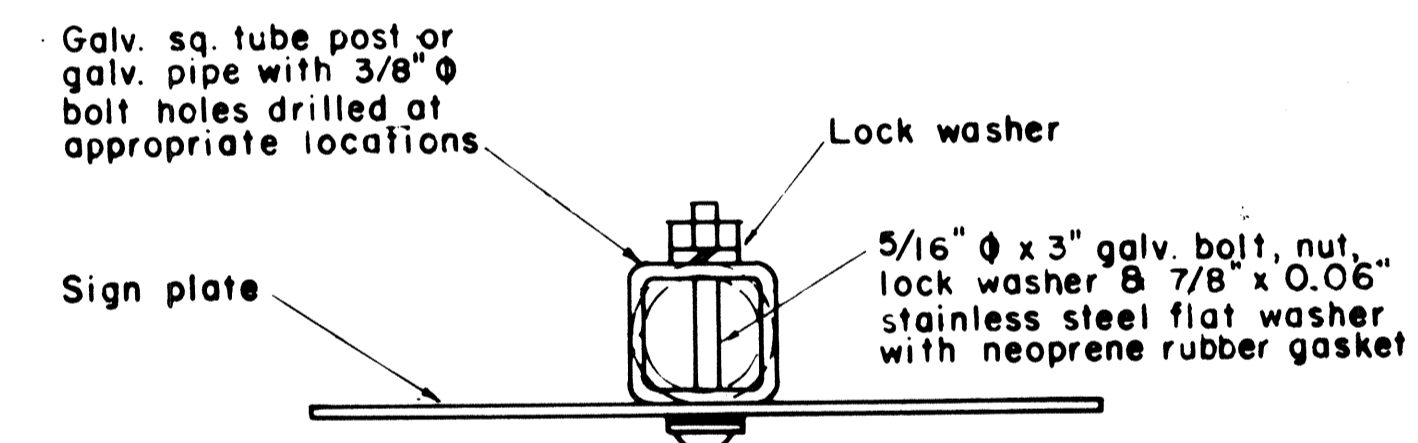
### HEIGHT AND LATERAL LOCATION OF SIGNS TYPICAL INSTALLATION



### BAND BRACKET

### TYPICAL MOUNTING DETAILS

NOT TO SCALE



### GALVANIZED SQUARE TUBE POST (OR GALVANIZED PIPE)

| NO. | REVISION   | APPROVED BY | DATE     |
|-----|--|-------------|----------|
| 1   | Supersedes Sht. DT-100 approved 12/30/69                           | H.T.        | 11/15/77 |
| 2   | Revised depth of signpost  | H.T.        | 5/8/79   |
| 3   | Added Notes No. 8 & No. 9  | H.T.        | 5/10/79  |
| 4   | Revised Gen. Note #4 & Mounting Details                            | H.T.        | 4/23/80  |
| 5   | Revised General Notes, Lateral Sign Locations and Mounting Details | H.T.        | 5/15/81  |

APPROVAL RECOMMENDED:  
*Eishi Tanaka* 11/10/77  
TRAFFIC ENGINEER DATE

APPROVED:  
*Robert S. Galovich* 11/15/77  
ASSISTANT CHIEF, ENGINEERING DATE

STATE OF HAWAII  
DEPARTMENT OF TRANSPORTATION  
HIGHWAYS DIVISION

### STANDARD DETAILS MISCELLANEOUS SIGN DETAILS

Not to scale June, 1977

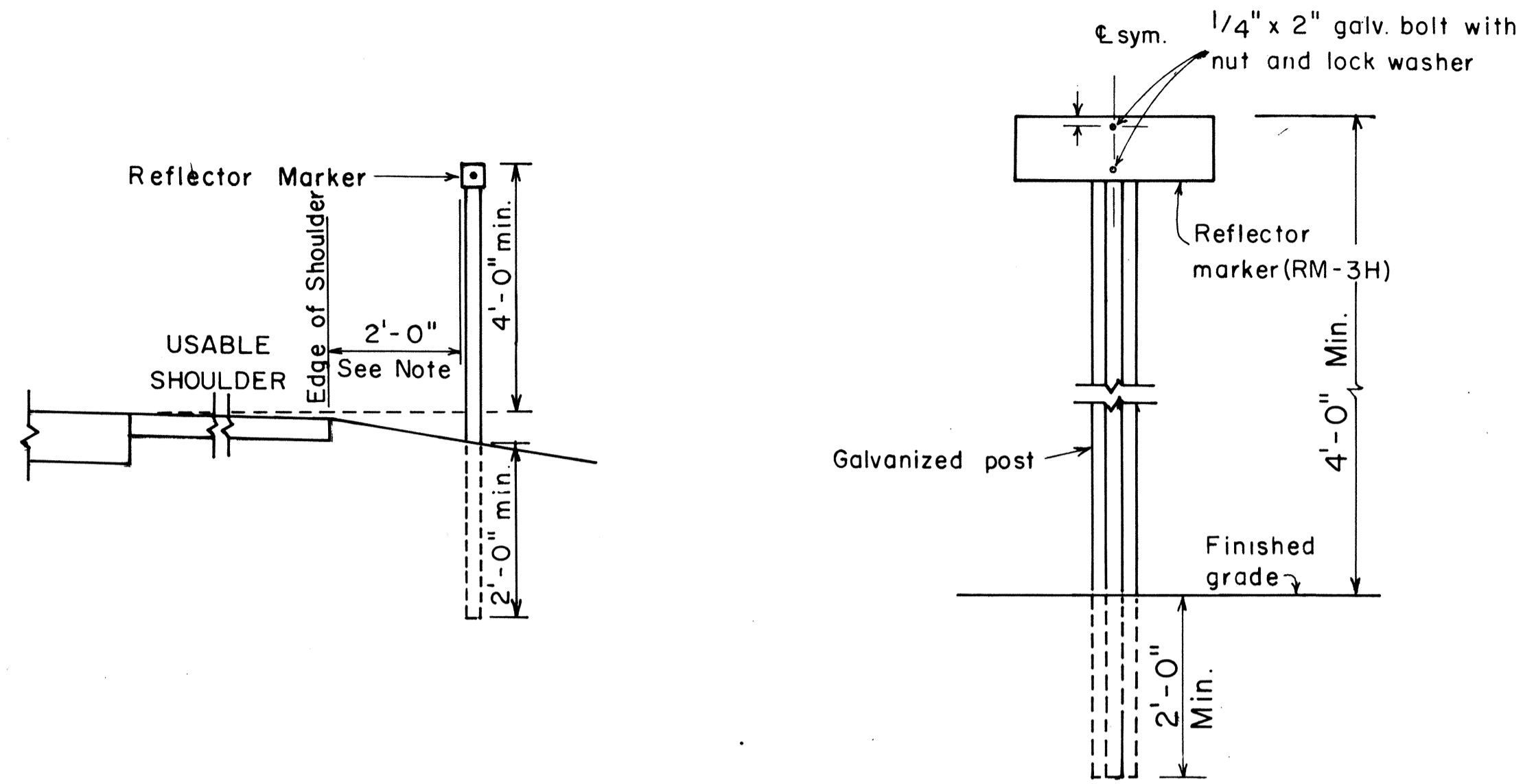
DATE: \_\_\_\_\_  
SURVEY PLOTTED BY: \_\_\_\_\_  
DRAWN BY: \_\_\_\_\_  
TRACED BY: \_\_\_\_\_  
DESIGNED BY: \_\_\_\_\_  
CHECKED BY: \_\_\_\_\_  
ORIGINAL PLAN No. \_\_\_\_\_  
NOTE BOOK No. \_\_\_\_\_



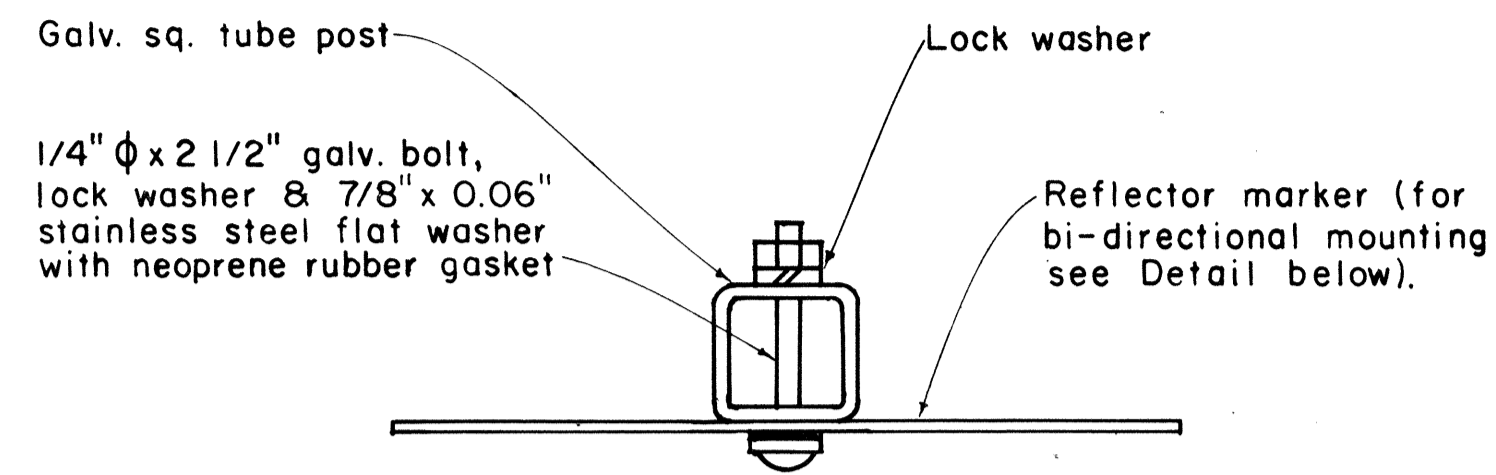
| FED. ROAD DIST. NO. | STATE | PROJ. NO.                   | FISCAL YEAR | SHEET NO. | TOTAL SHEETS |
|---------------------|-------|-----------------------------|-------------|-----------|--------------|
| HAWAII              | HAW.  | 1400A-01-R2M<br>1400A-02-R2 | 1982        | 28        | 30           |

**GENERAL NOTES:**

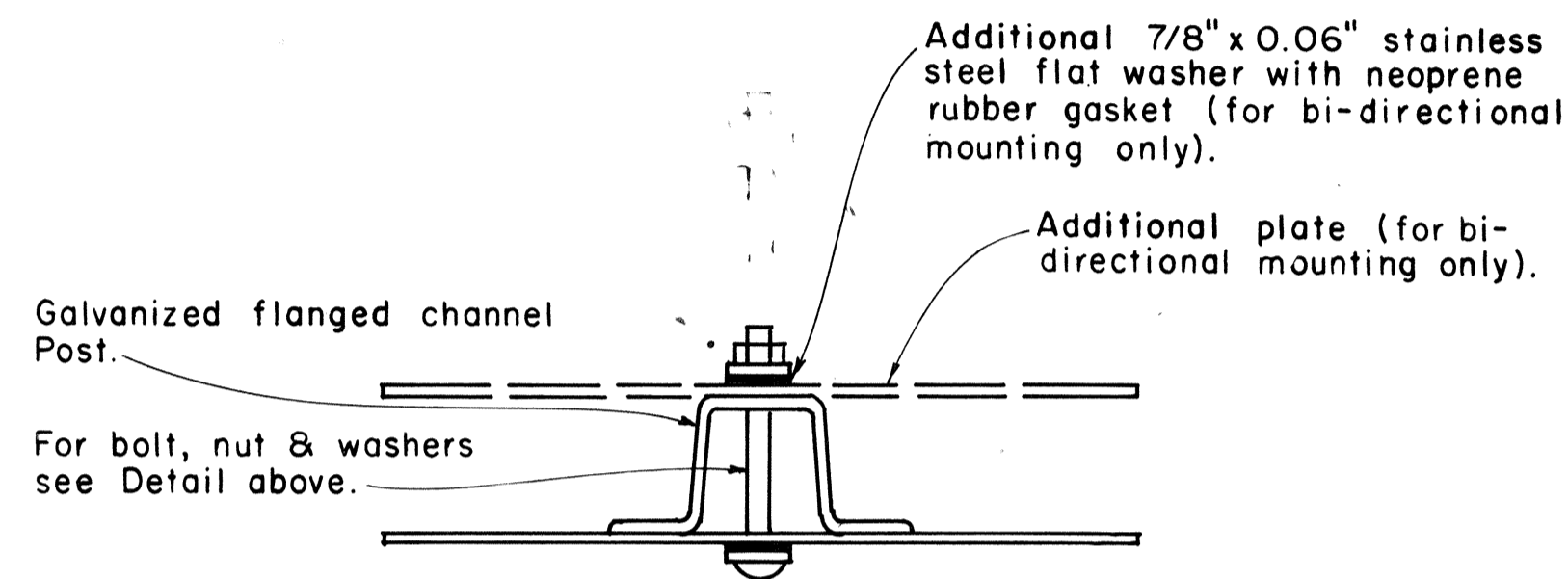
- Clearance markers (RM-3, RM-4) shall be installed with the edge of the marker in line with the inner edge of the obstruction.
- (R) or (L) indicates right or left and shall be as shown on the plans.
- Reflector markers RM-1 and RM-2 shall be:
  - Yellow if placed along the left edge of divided roadways, one-way roadways, and ramps in the direction of travel.
  - White if placed along the right edge of divided roadways, one-way roadways, and ramps in the direction of travel.
- For reflector marker RM-9, reflective sheeting material may be used as an alternate.
- For RM-4, the stripes shall slope downward at an angle of 45° in the direction of traffic.



**REFLECTOR MARKER MOUNTING DETAIL**

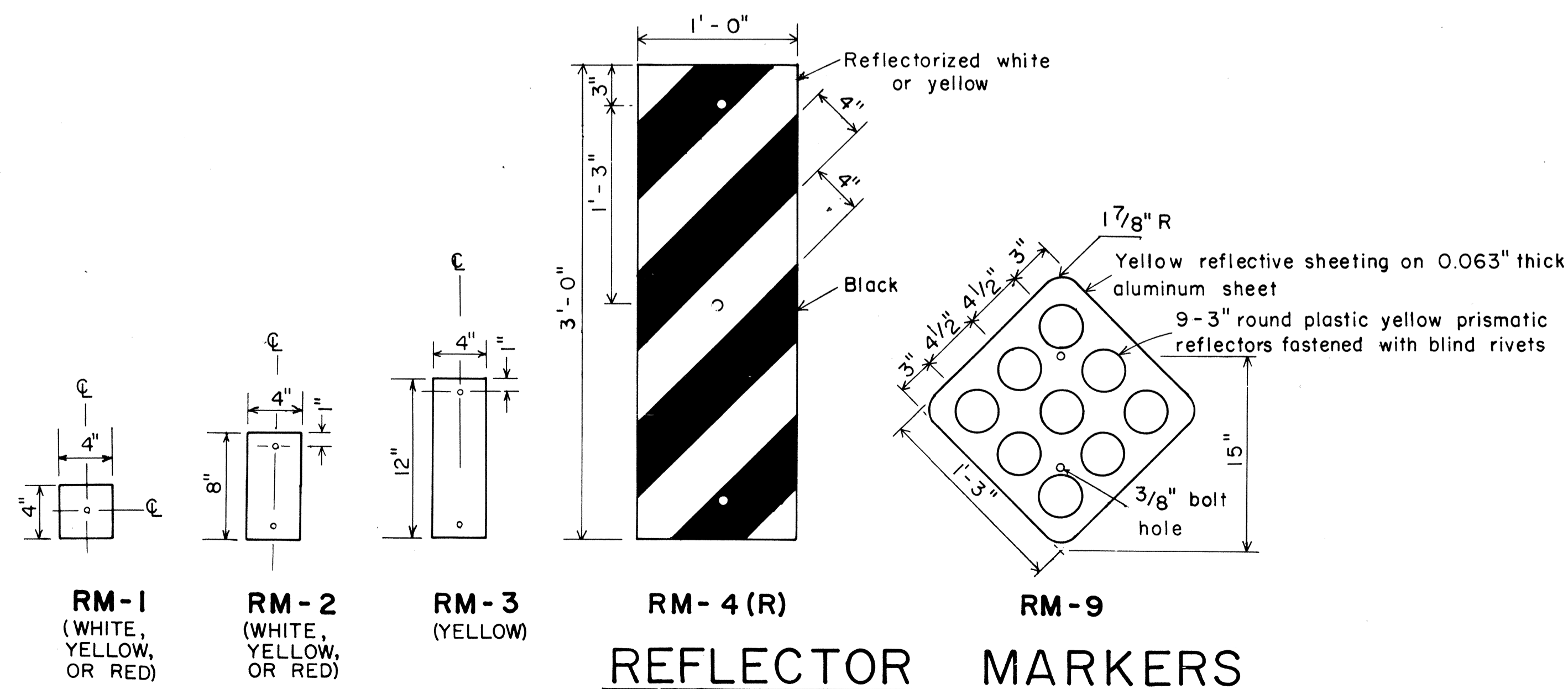


**GALVANIZED SQUARE TUBE POST**



**GALVANIZED FLANGED CHANNEL POST**

**TYPICAL MOUNTING DETAILS**



**REFLECTOR MARKERS**

APPROVAL RECOMMENDED:  
*Eushi Tanaka* 11/1/77  
 TRAFFIC ENGINEER DATE

APPROVED:  
*Herbert S. Sakai* 11/15/77  
 ASSISTANT CHIEF, ENGINEERING DATE

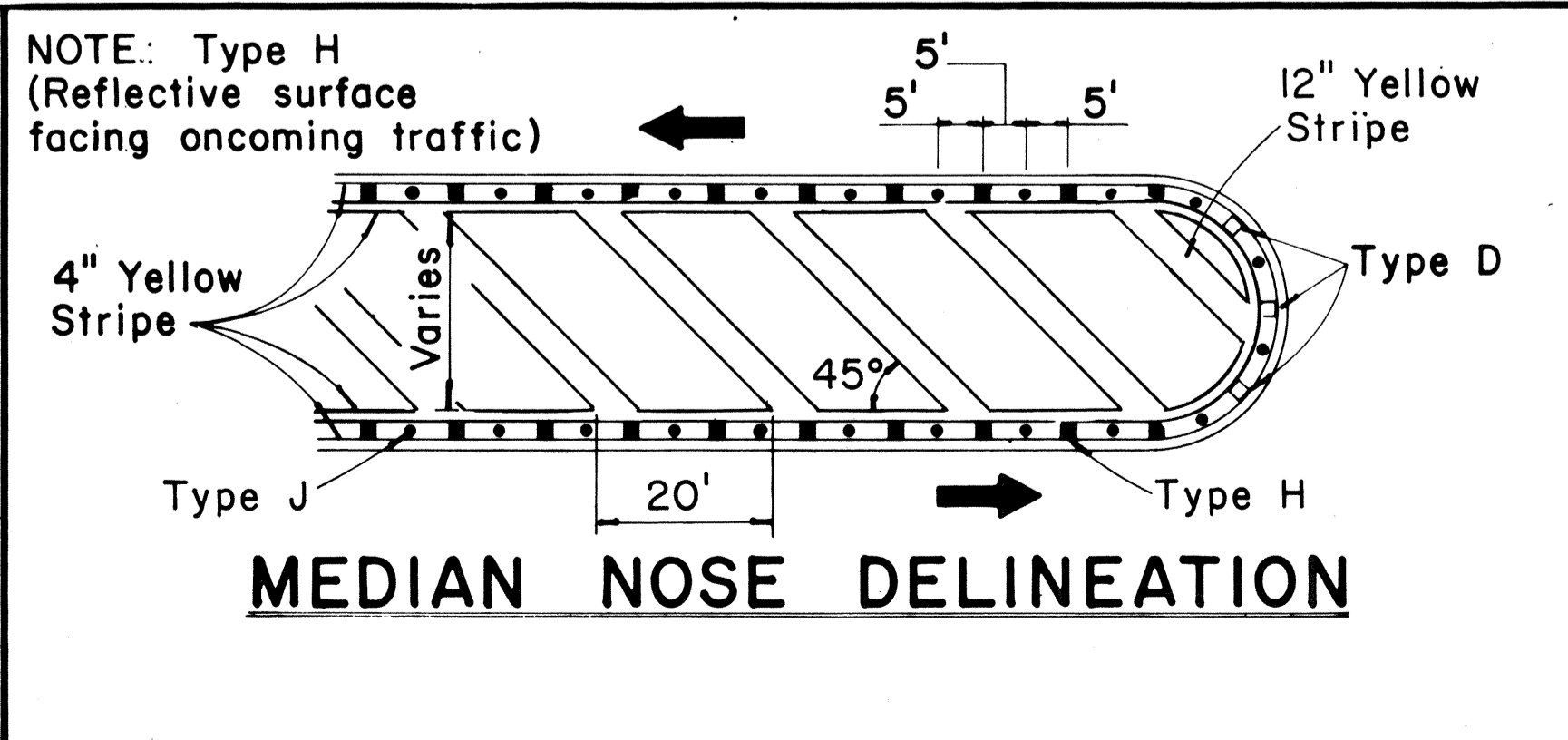
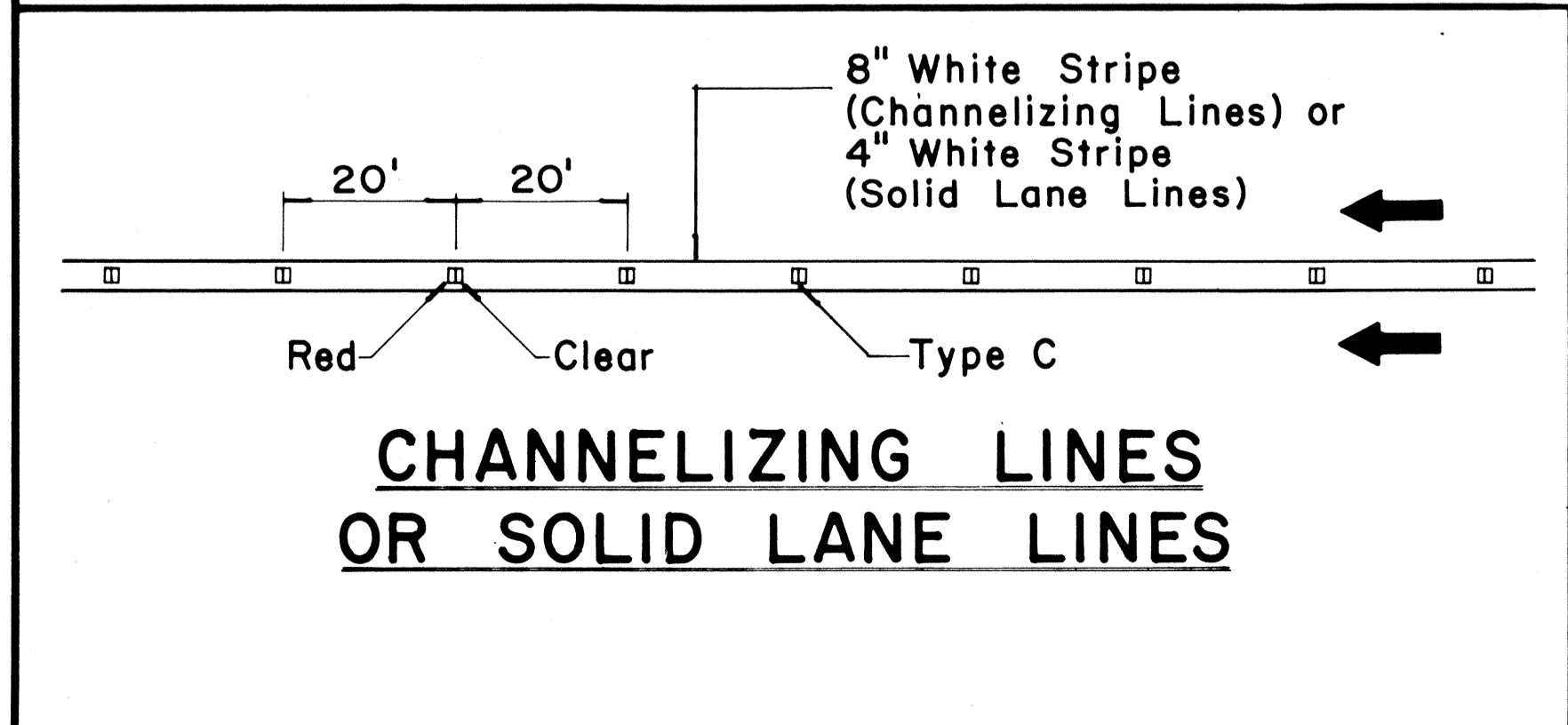
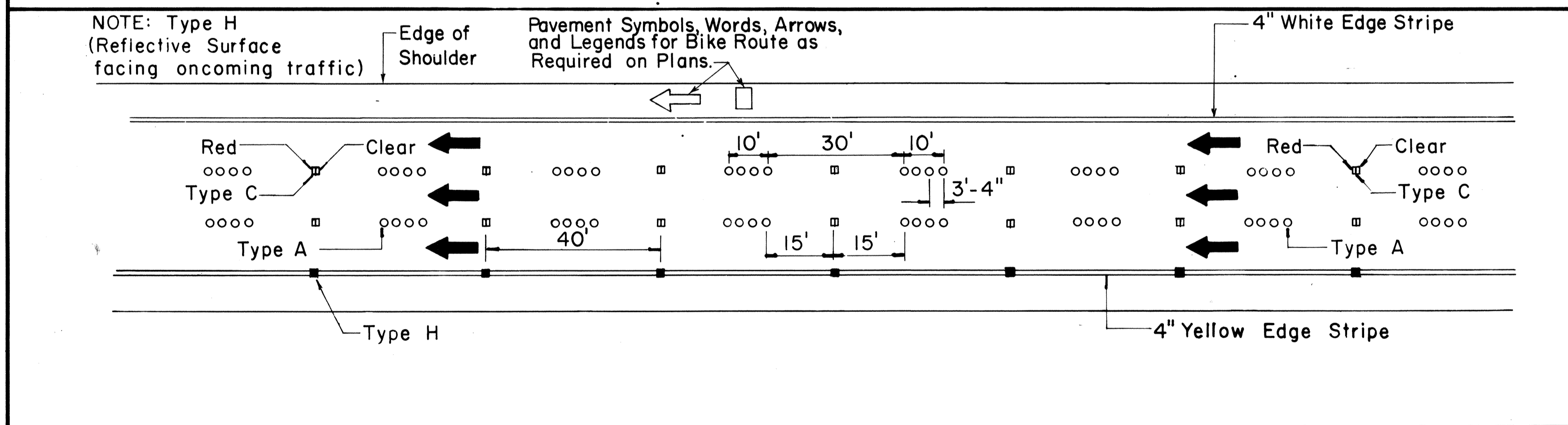
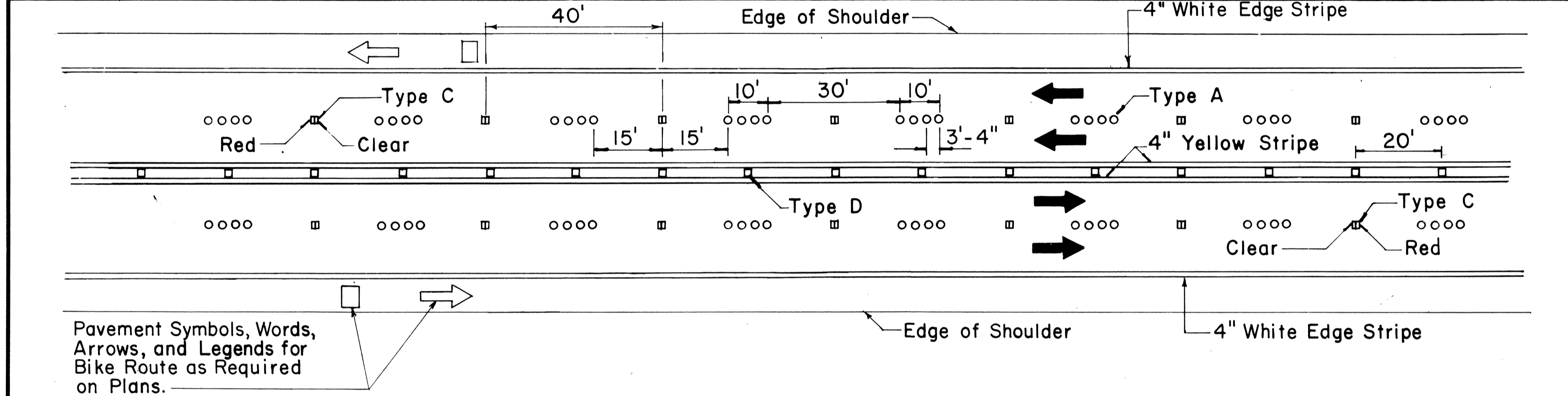
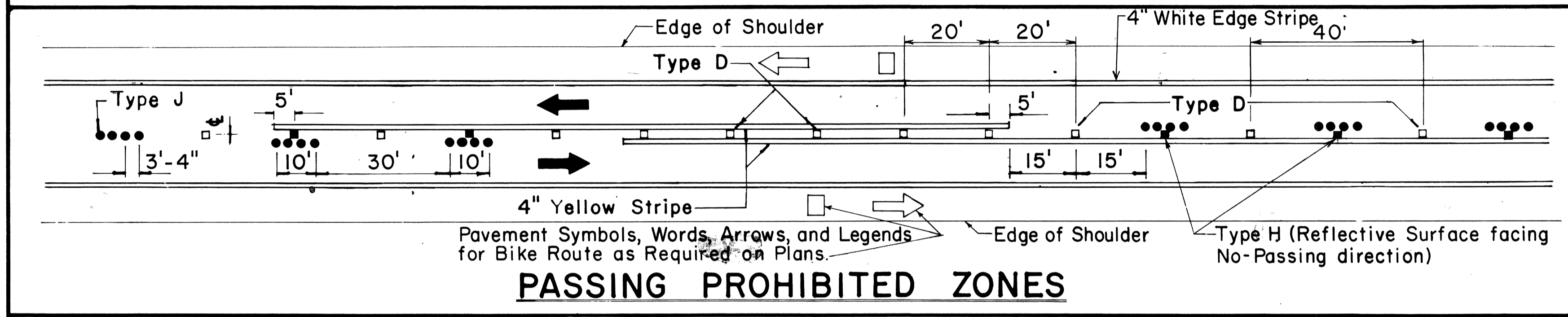
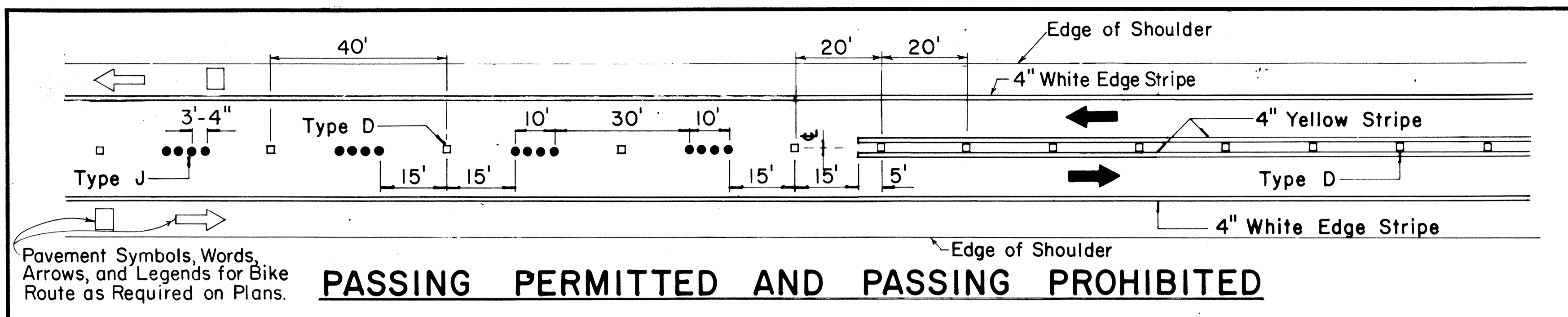
| NO. | REVISION                 | APPROVED BY | DATE    |
|-----|--------------------------|-------------|---------|
| 1   | Revised Mounting Details | H.T.        | 4/23/80 |

STATE OF HAWAII  
 DEPARTMENT OF TRANSPORTATION  
 HIGHWAYS DIVISION

**STANDARD DETAILS**  
 MISCELLANEOUS REFLECTOR MARKERS

Not to scale June, 1977

| FED. ROAD DIST. NO. | STATE | PROJ. NO.                   | FISCAL YEAR | SHEET NO. | TOTAL SHEETS |
|---------------------|-------|-----------------------------|-------------|-----------|--------------|
| HAWAII              | HAW.  | 1400A-01-82M<br>1400A-02-82 | 1982        | 29        | 30           |

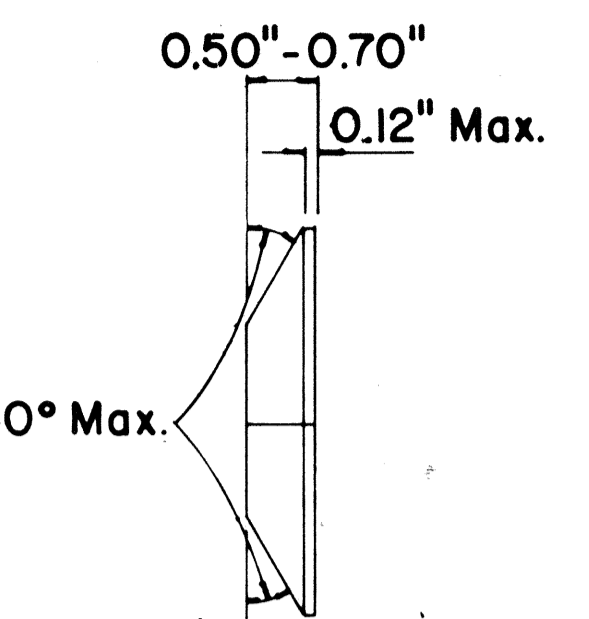
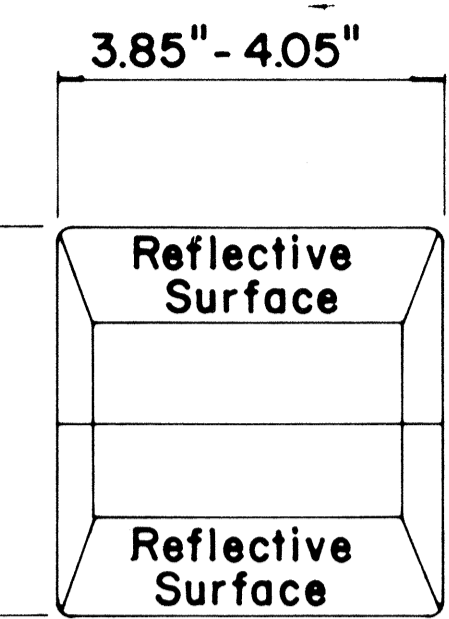
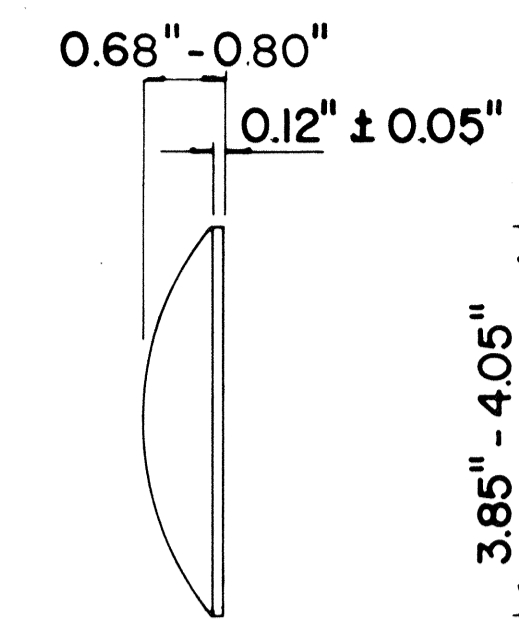
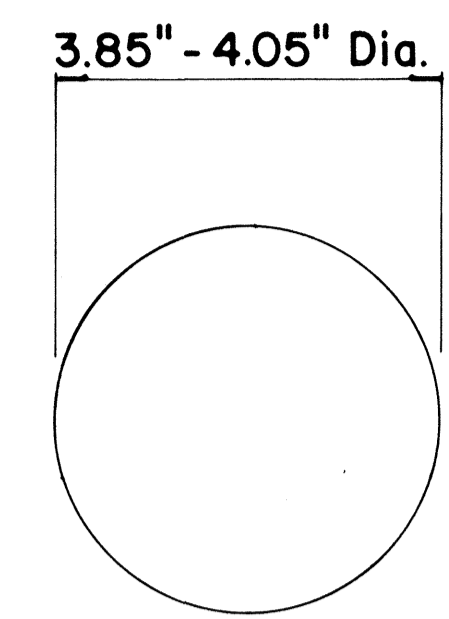


TWO - LANE

MULTI - LANE

DIVIDED HIGHWAY AND FREEWAY

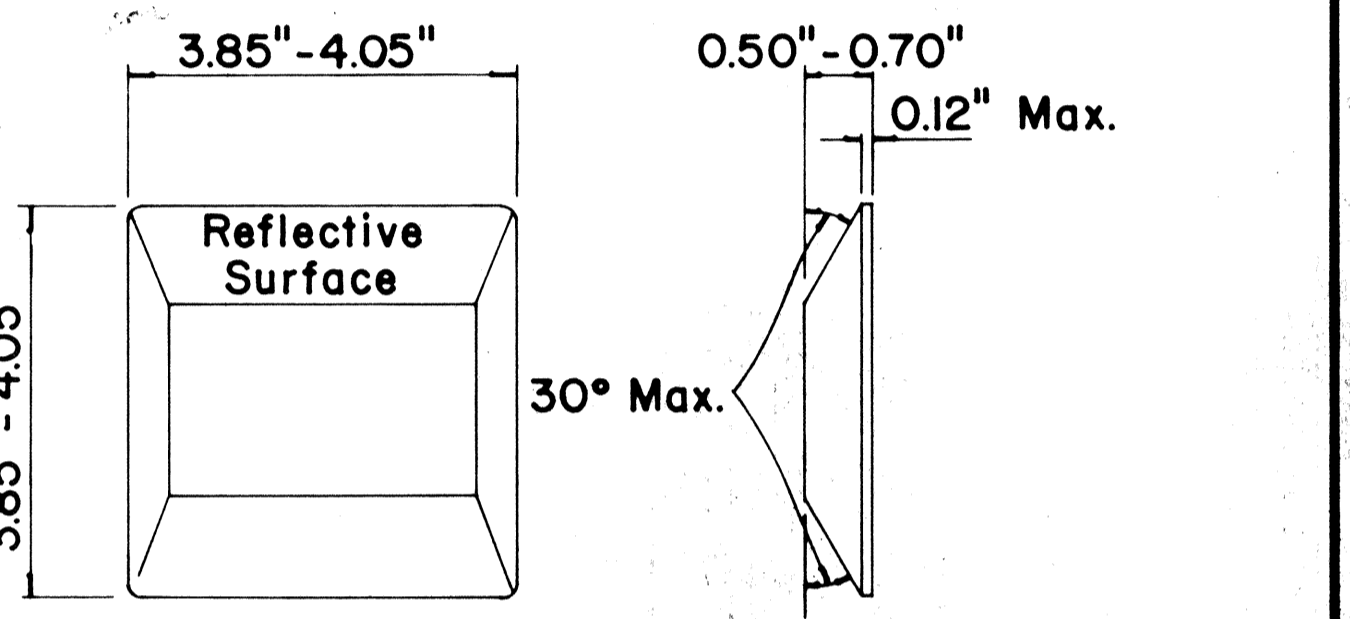
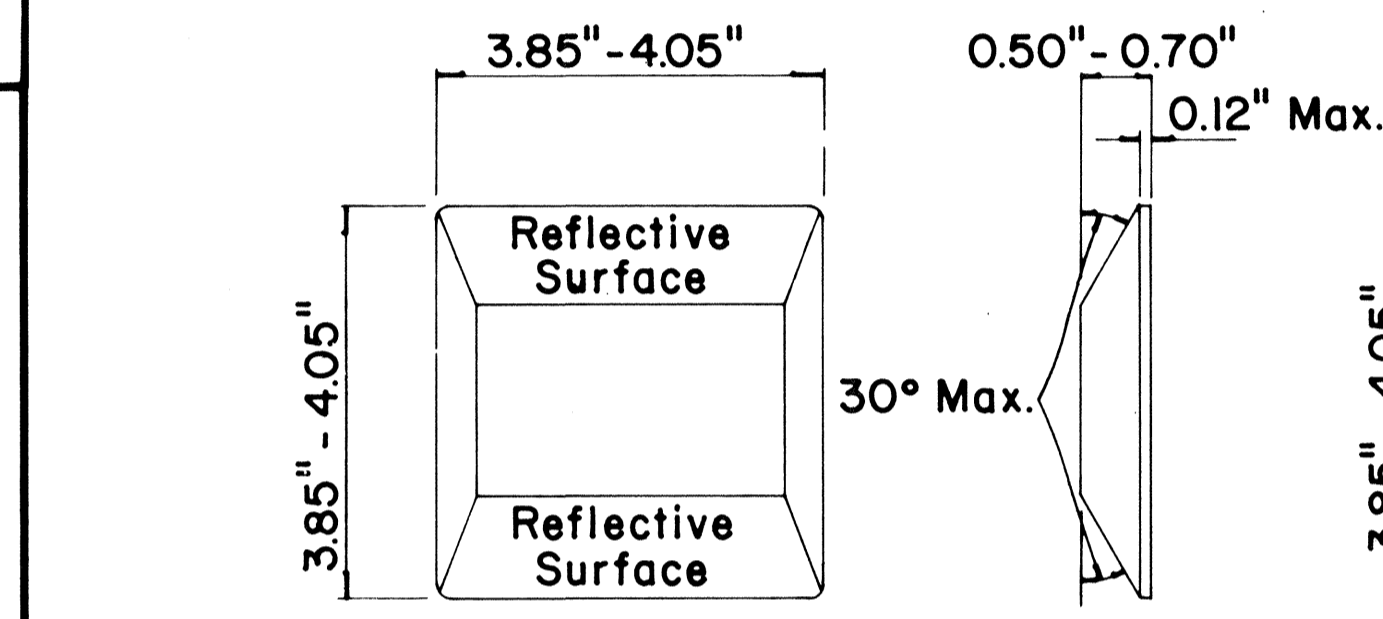
MISCELLANEOUS



**TYPE A**  
NON-REFLECTIVE WHITE MARKER

**TYPE J**  
NON-REFLECTIVE YELLOW MARKER

**TYPE C**  
RED-CLEAR REFLECTIVE MARKER



**TYPE D**  
TWO-WAY YELLOW REFLECTIVE MARKER

**TYPE H**  
ONE-WAY YELLOW REFLECTIVE MARKER

**GENERAL NOTES**

1. Pavement marking and striping shall conform to the latest "Manual on Uniform Traffic Control Devices for Streets and Highways," and as amended.
2. Layout and installation of pavement marking and striping shall be done by the Contractor. The Contractor shall check the layouts with the Engineer prior to performing work.

**LEGEND**

- Type A
- Type C
- Type D
- Type H
- Type J

APPROVAL RECOMMENDED:

*Eiichi Tanaka* 7/21/78  
TRAFFIC ENGINEER DATE

APPROVED:

*Robert J. Zelenka* 1/24/78  
ASSISTANT CHIEF, ENGINEERING DATE

| No. | REVISION   | APPROVED BY | DATE     |
|-----|--|-------------|----------|
| 1   | Supersedes DT 300 approved 11/18/71.               | H.f.        | 1/24/78  |
| 2   | Delete Type A Markers from Bike Route Delineation. | H.f.        | 10/15/79 |

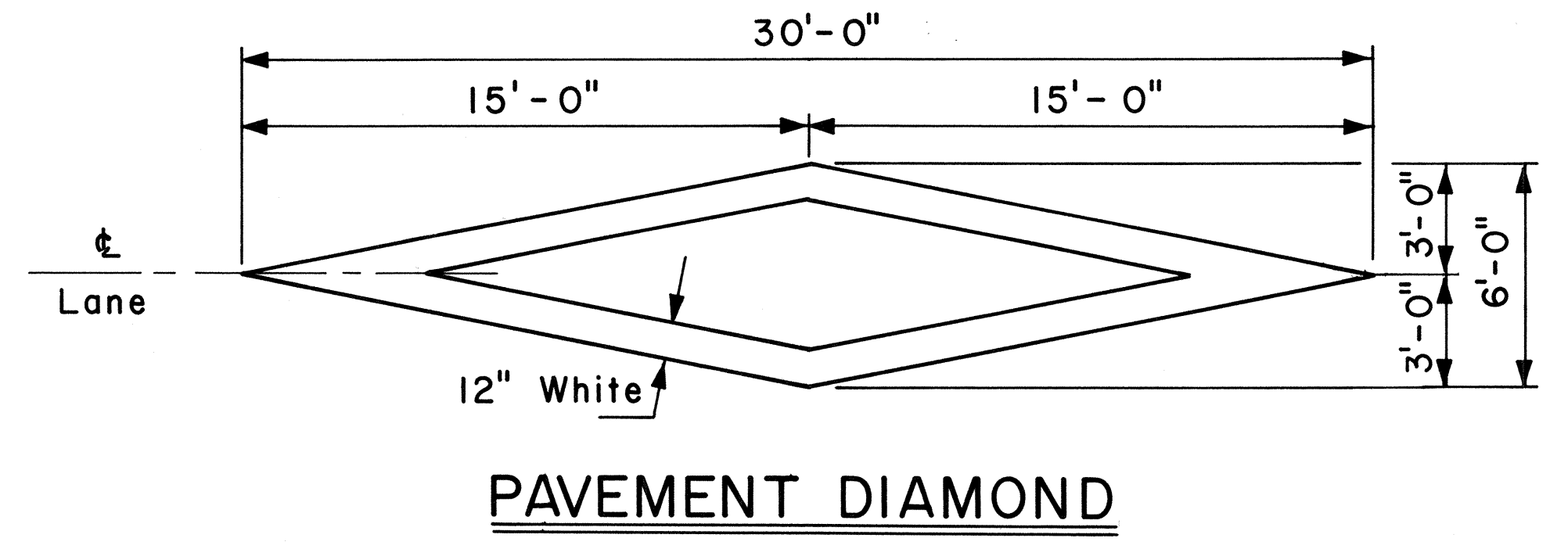
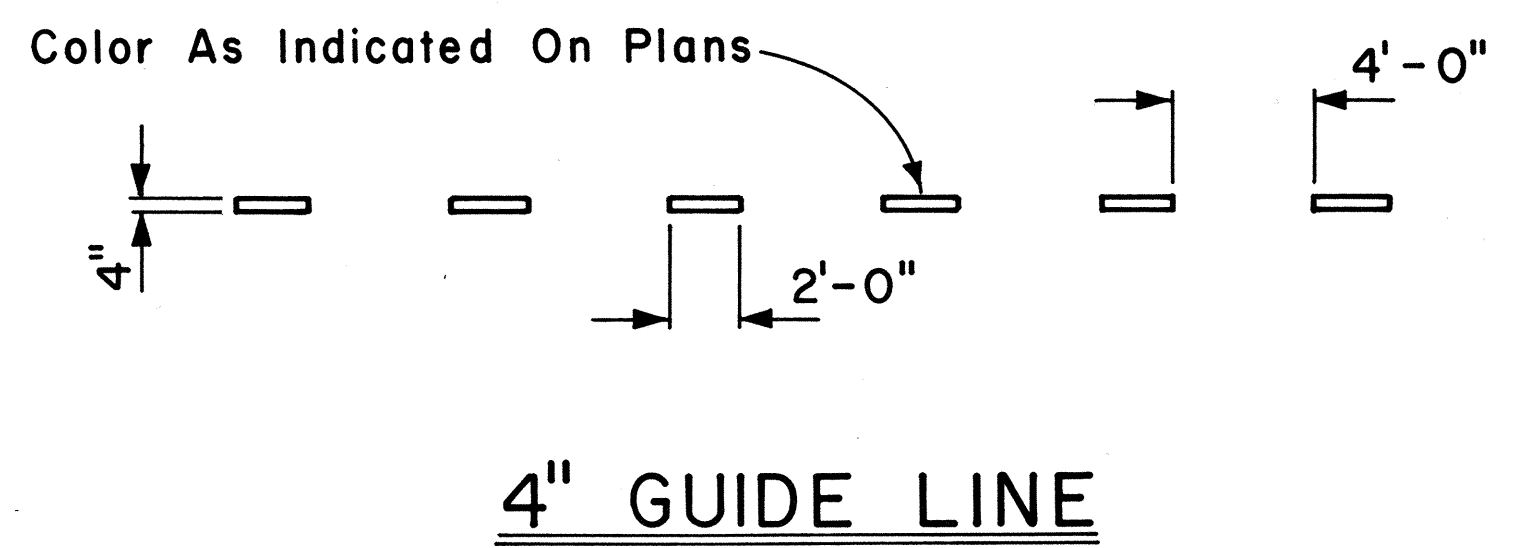
STATE OF HAWAII  
DEPARTMENT OF TRANSPORTATION  
HIGHWAYS DIVISION

**STANDARD DETAILS**  
**RAISED PAVEMENT MARKERS**  
**AND STRIPING**

Not to Scale July 1978  
SHEET No. 29 OF 10 SHEETS DT 300

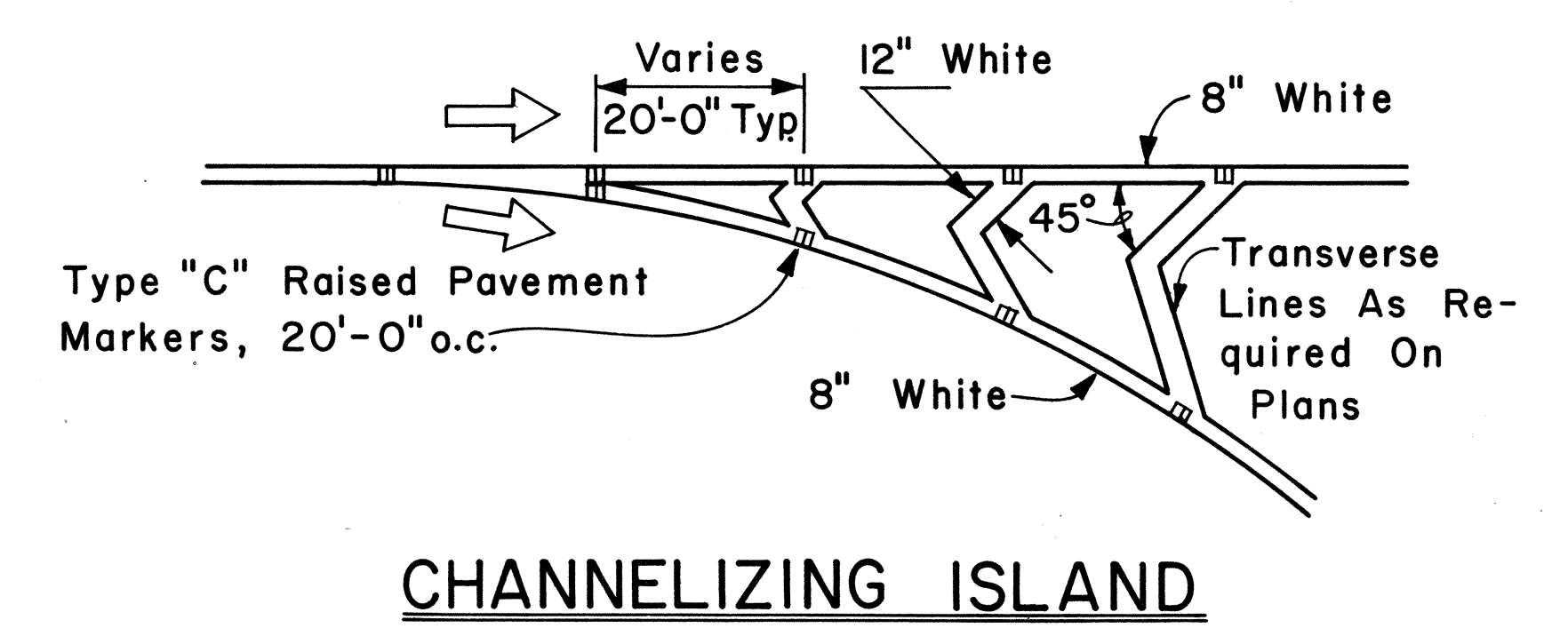
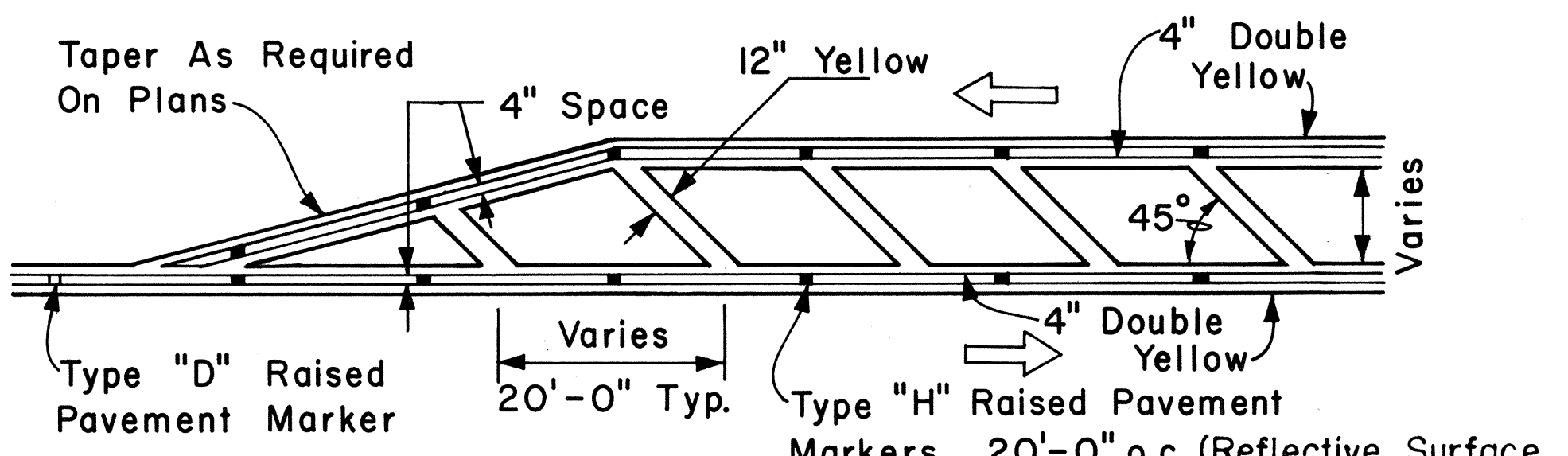
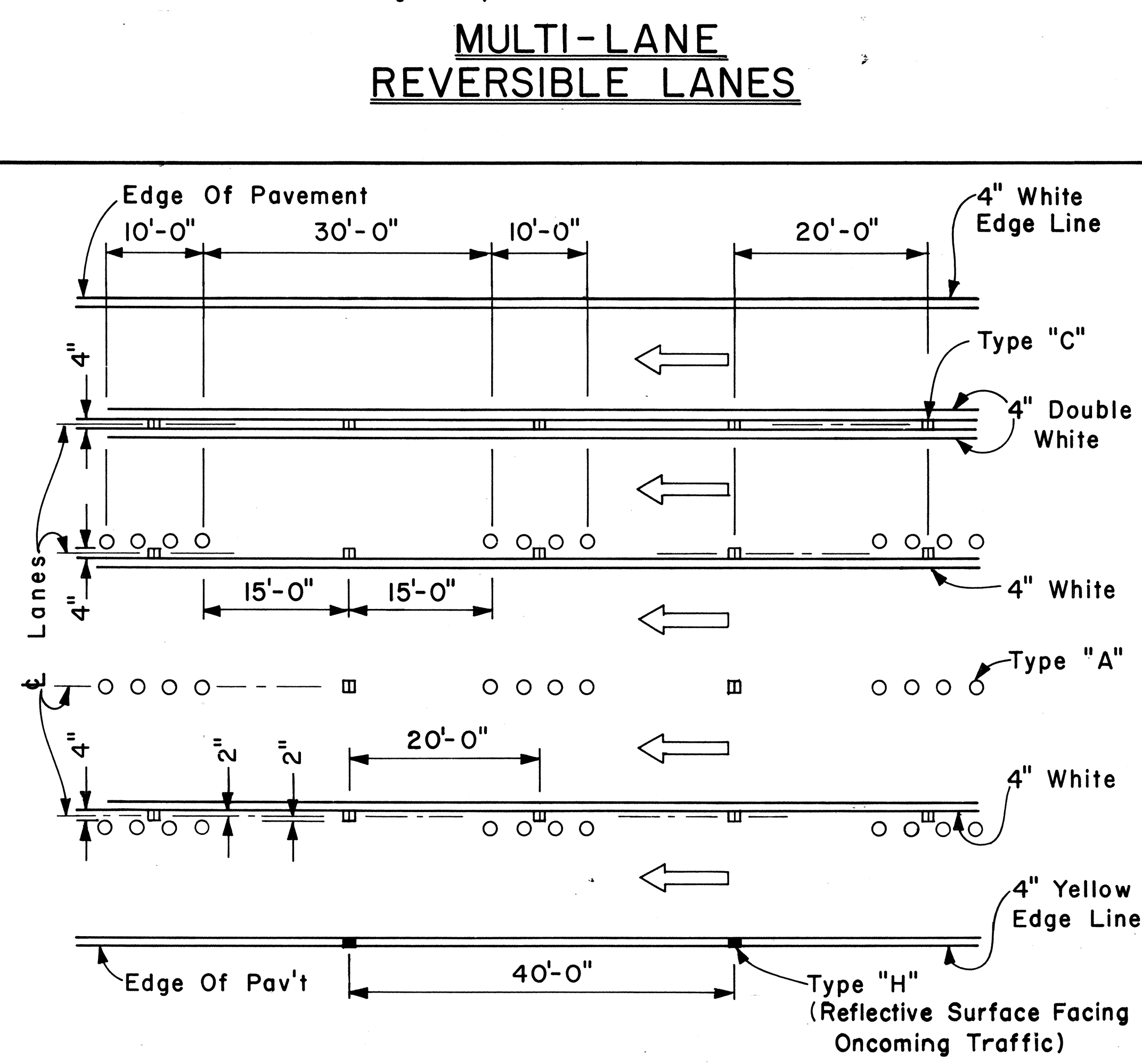
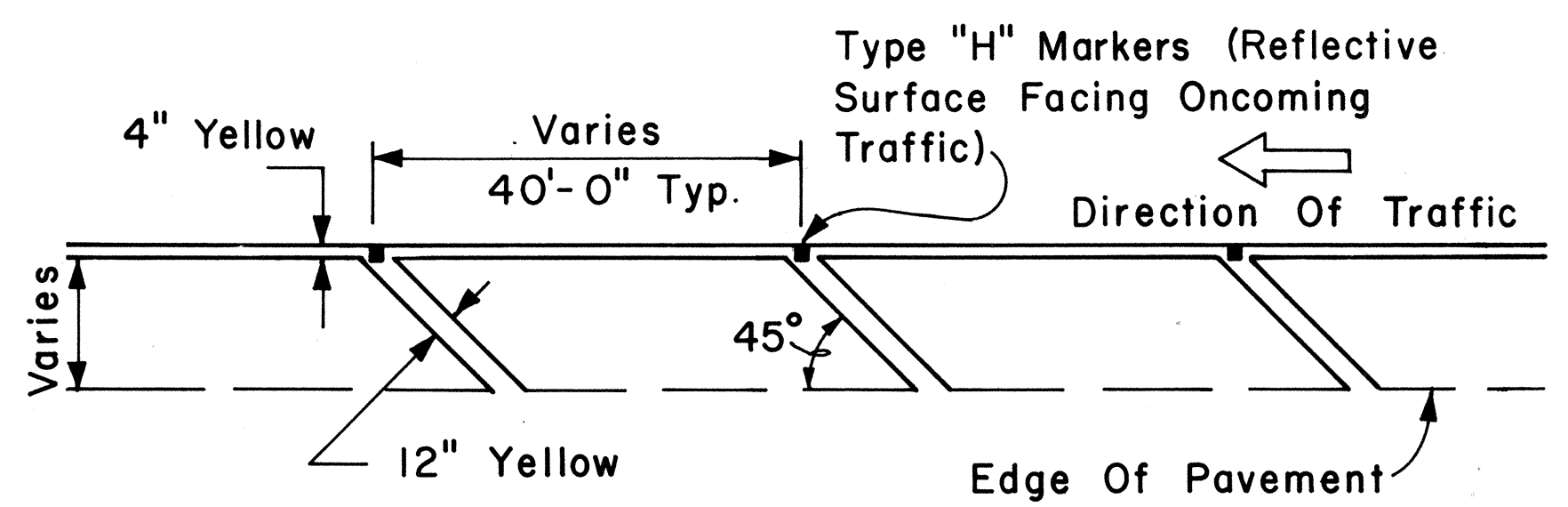
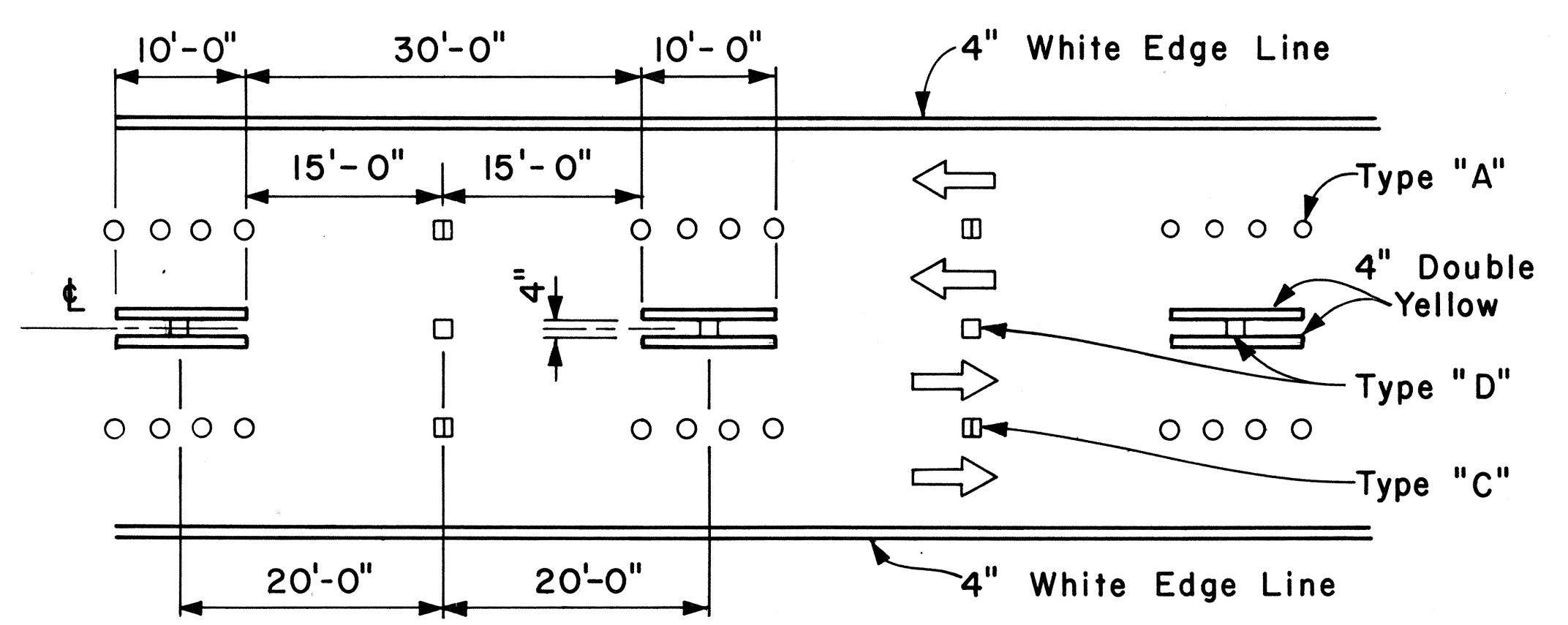
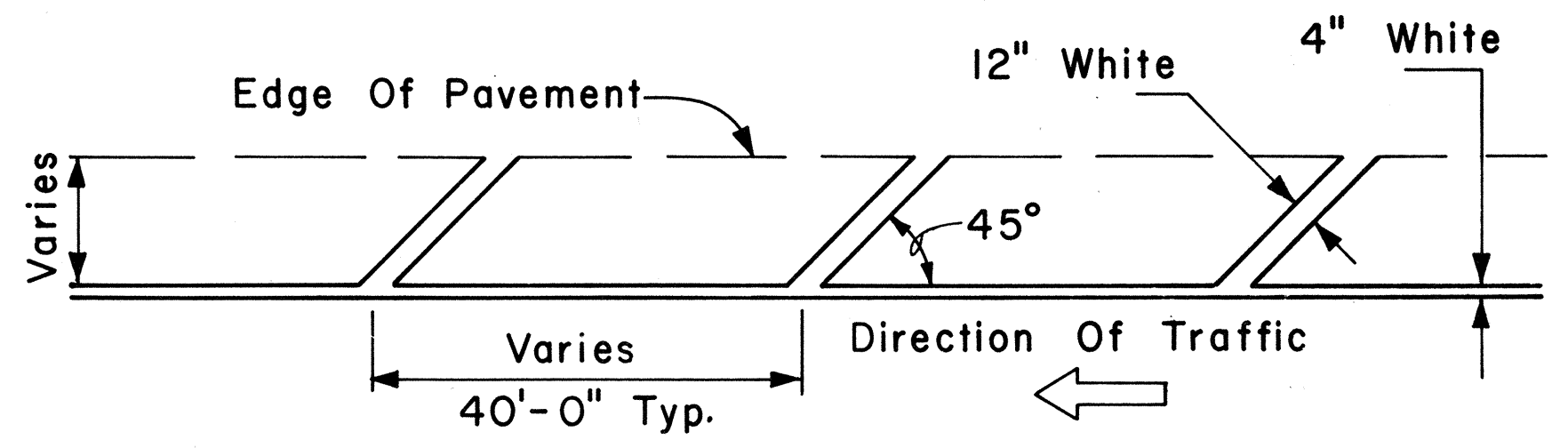
DATE  
SURVEY PLOTTED BY  
PLAN  
FRACED BY  
NOTE BOOK  
DESIGNED BY  
QUANTITIES BY  
CHECKED BY

|                     |       |                             |             |           |              |
|---------------------|-------|-----------------------------|-------------|-----------|--------------|
| FED. ROAD DIST. NO. | STATE | PROJ. NO.                   | FISCAL YEAR | SHEET NO. | TOTAL SHEETS |
| HAWAII              | HAW.  | 7400A-01-82M<br>7400A-02-82 | 1982        | 30        | 30           |



**GENERAL NOTES:**

1. Pavement marking and striping shall conform to the latest edition of the "Manual on Uniform Traffic Control Devices for Streets and Highways," by the FHWA, and as amended.
2. Layout of pavement markings and striping shall be done by the Contractor. The Contractor shall check layout of markings and striping with the Engineer prior to performing work.
3. For additional pavement marking details, see sheet DT 300.



APPROVAL RECOMMENDED:  
*E. I. Tanaka* 5/2/78  
 TRAFFIC ENGINEER DATE

APPROVED:  
*Harold S. Zaksch* 5/3/78  
 ASSISTANT CHIEF, ENGINEERING DATE

| NO. | REVISION | APPROVED BY | DATE |
|-----|----------|-------------|------|
|     |          |             |      |

STATE OF HAWAII  
 DEPARTMENT OF TRANSPORTATION  
 LAND TRANSPORTATION FACILITIES DIVISION

**STANDARD DETAILS**

MISCELLANEOUS  
 PAVEMENT MARKINGS

Scale: Not to Scale Date: April, 1978

SHEET NO. 10 OF 10 SHEETS DT 302

DATE: \_\_\_\_\_  
 SURVEY PLOTTED BY: \_\_\_\_\_  
 DRAWN BY: \_\_\_\_\_  
 DESIGNED BY: \_\_\_\_\_  
 NOTE BOOK QUANTITIES BY: \_\_\_\_\_  
 CHECKED BY: \_\_\_\_\_  
 No. \_\_\_\_\_