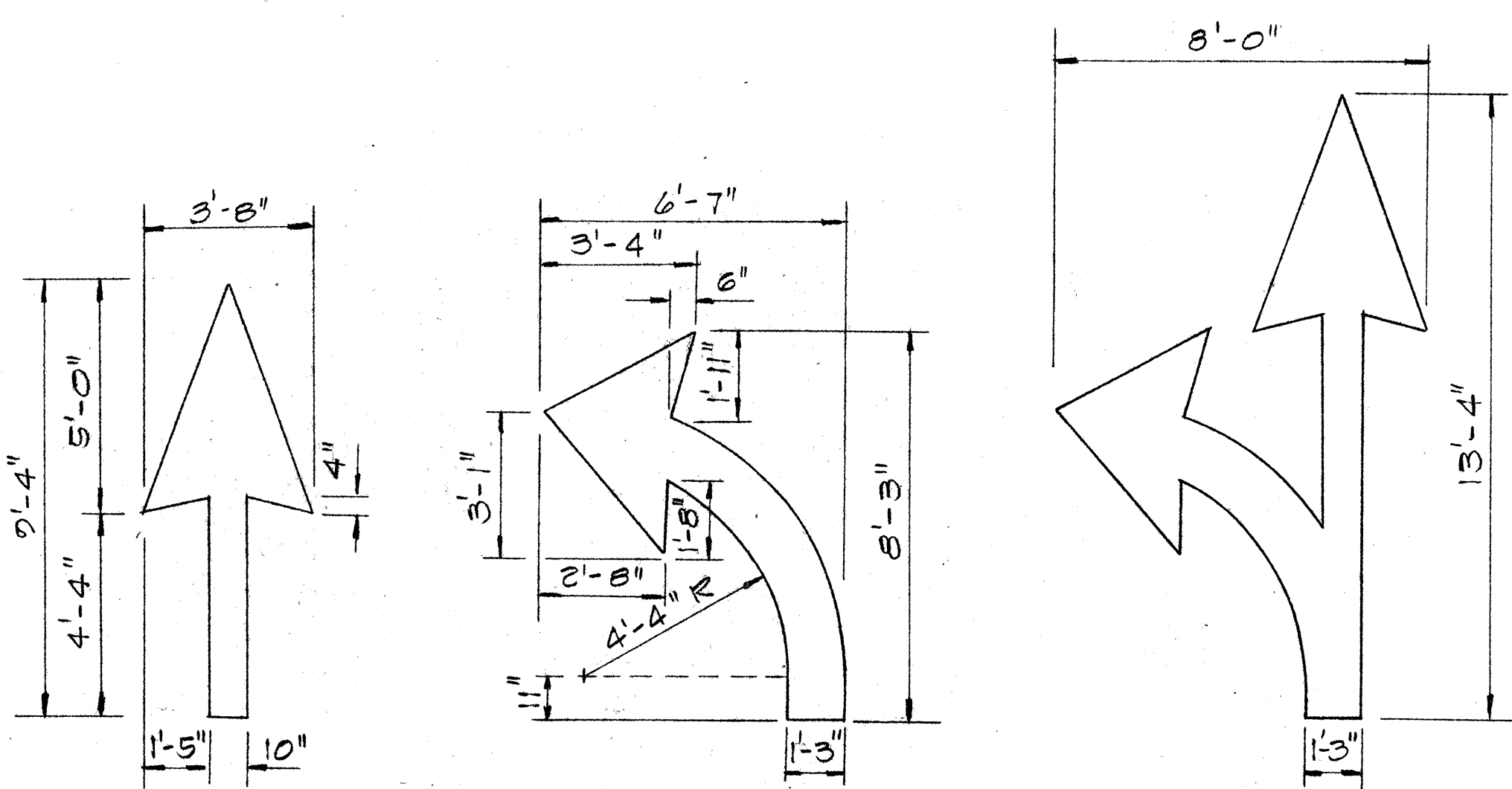
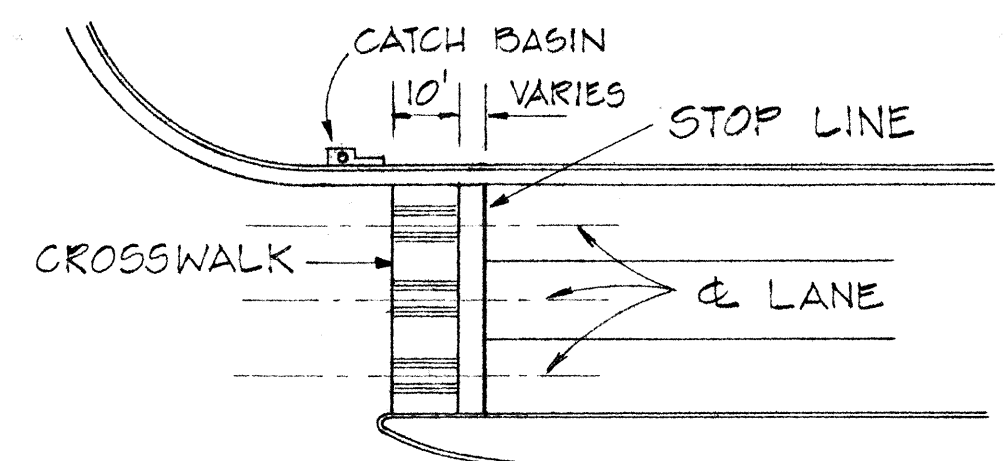


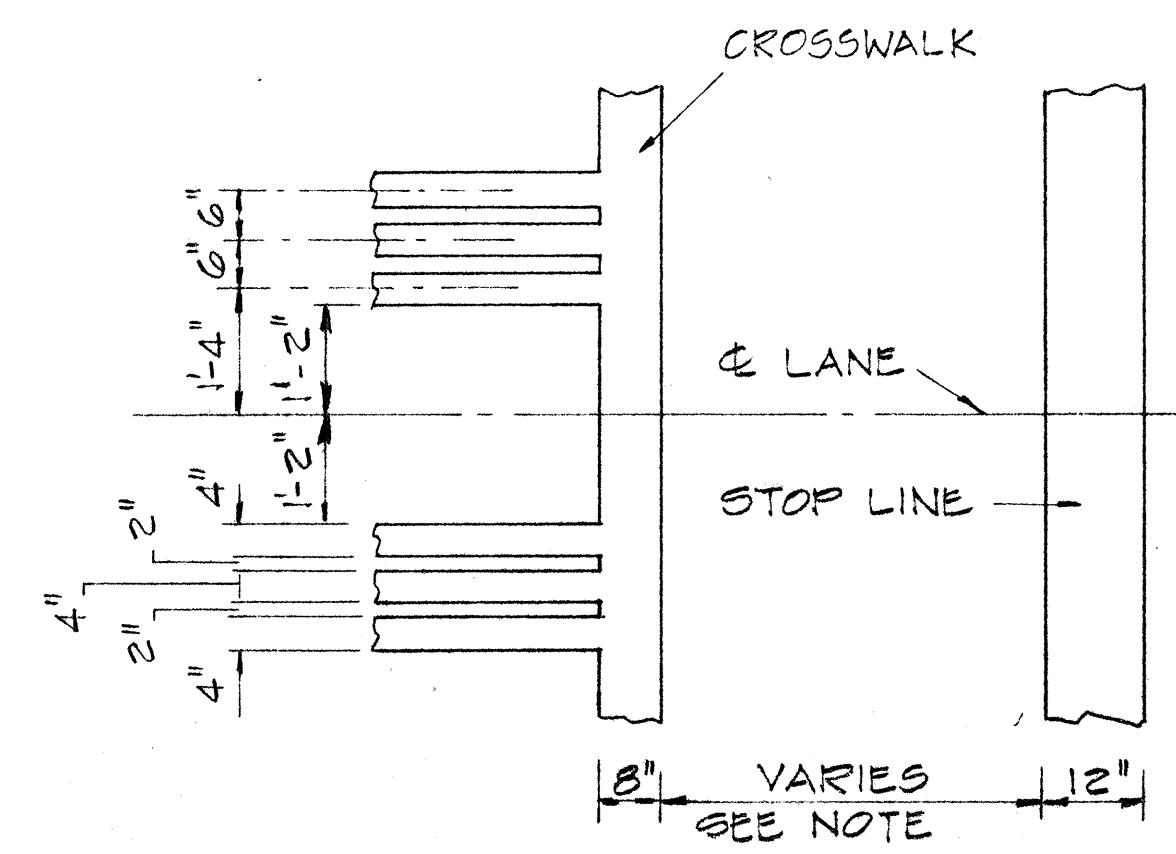
| FED. ROAD DIST. NO. | STATE | FED. AID PROJ. NO. | FISCAL YEAR | SHEET NO. | TOTAL SHEETS |
|---------------------|-------|--------------------|-------------|-----------|--------------|
| HAWAII | HAW. | 72B-01-75M | 1975 | 9 | 11 |



PAVEMENT ARROWS
NOT TO SCALE

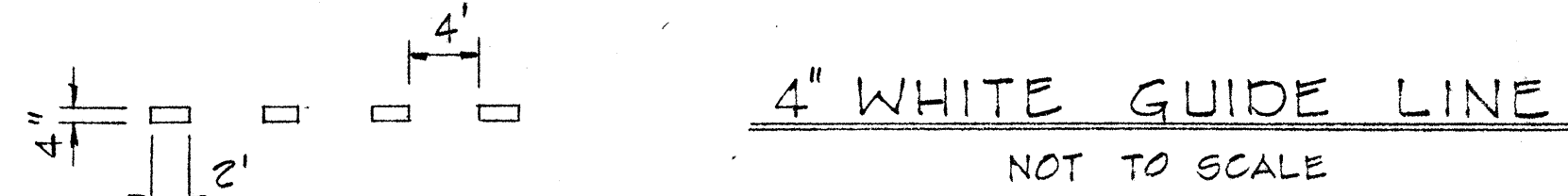


NOTE: SET ALL CROSSWALKS AWAY FROM CATCH BASINS

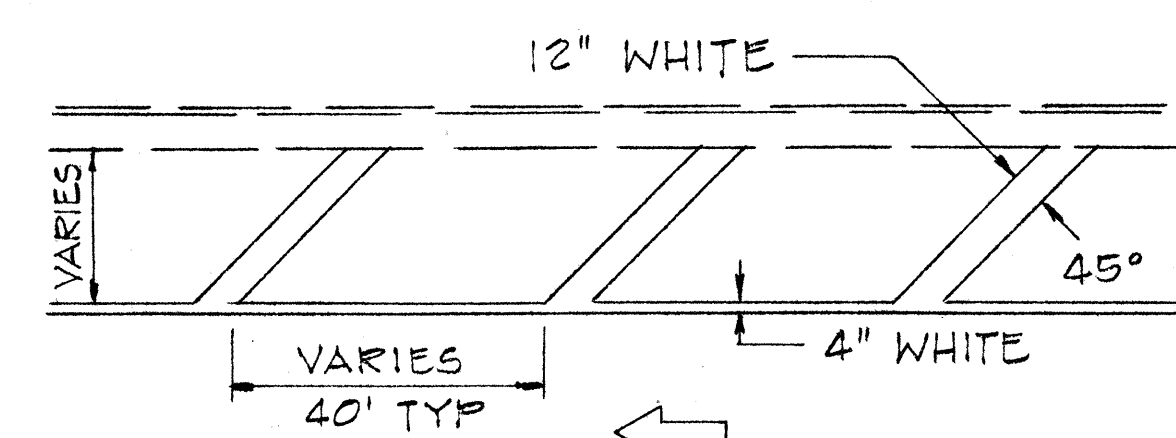


CROSSWALK & STOP LINE
NOT TO SCALE

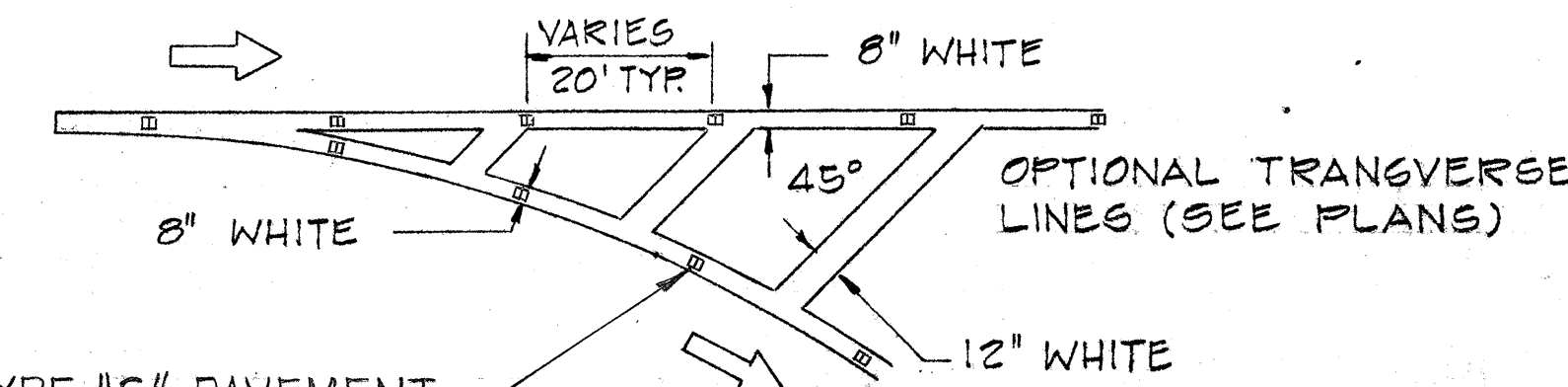
WITH THE EXCEPTION OF STOP CONDITIONS, STOP LINES AT UNSIGNALIZED INTERSECTIONS AND AT MIDBLOCK CROSSWALKS SHALL BE PLACED A MINIMUM OF 10 FEET BEFORE THE CROSSWALK, HOWEVER A DISTANCE OF 20 FEET IS PREFERABLE. STOP LINES AT SIGNALIZED INTERSECTIONS SHALL BE PLACED A MINIMUM OF FOUR FEET BEFORE THE CROSSWALK.



4" WHITE GUIDE LINE
NOT TO SCALE



TRANSVERSE SHOULDER MARKING
NOT TO SCALE

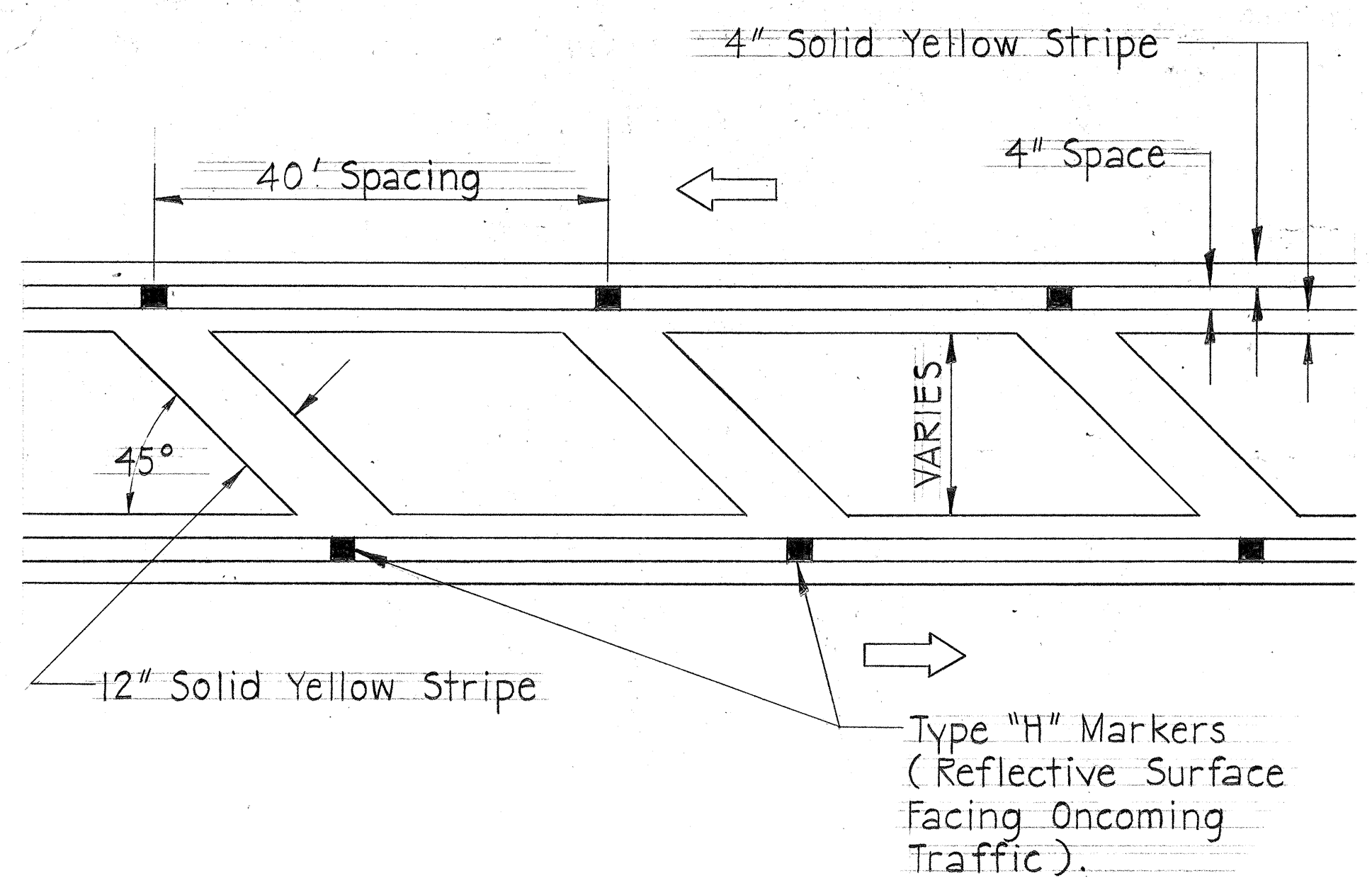


TYPE "C" PAVEMENT MARKERS AT 20'-0" O.C.

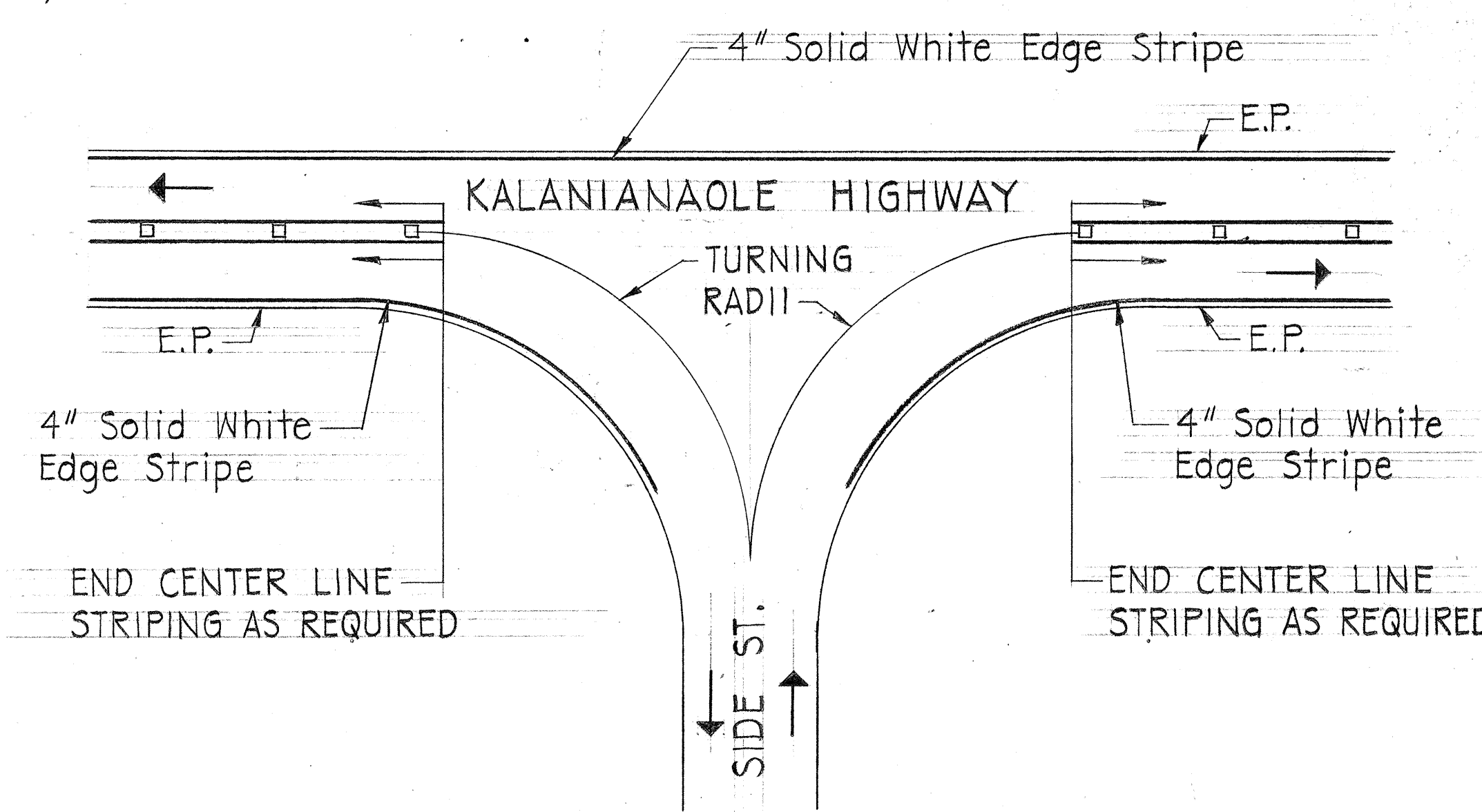
CHANNELIZING ISLAND
NOT TO SCALE

GENERAL NOTES - PAVEMENT MARKINGS

1. Pavement Markings shall conform to the "Manual on Uniform Traffic Control Devices for Streets and Highways," 1971, and as shown on the plans.
2. Layout of pavement markings and striping shall be done by the Contractor. Contractor shall check layout of markers & striping with the Engineer prior to performing work.
3. For additional pavement marking details see plan sht #DT 300.
4. Exact location of crosswalks and stop lines shall be determined in the field by the Engineer.



FLUSH MEDIAN ISLAND
NOT TO SCALE



STRIPING DETAILS AT INTERSECTIONS
NOT TO SCALE

NOTE: DELINEATE ROADWAY INTERSECTIONS AS SHOWN ABOVE UNLESS OTHERWISE SPECIFIED.

STATE OF HAWAII
DEPARTMENT OF TRANSPORTATION
HIGHWAYS DIVISION

TYPICAL DETAILS OF PAVEMENT MARKINGS

KALANIANA'OLE HWY. RESURFACING
WAILA ST. TO LUNALILO HOME RD.

PROJECT No. 72B-01-75M
SCALE: AS SHOWN DATE: _____

SHEET NO. 1 OF 1 SHEETS

| | |
|-------------------|------|
| SURVEY PLOTTED BY | DATE |
| DRAWN BY | |
| TRACED BY | |
| NOTED BY | |
| CHECKED BY | |
| ORIGINAL PLAN | |
| NOTE BOOK | |
| No. | |