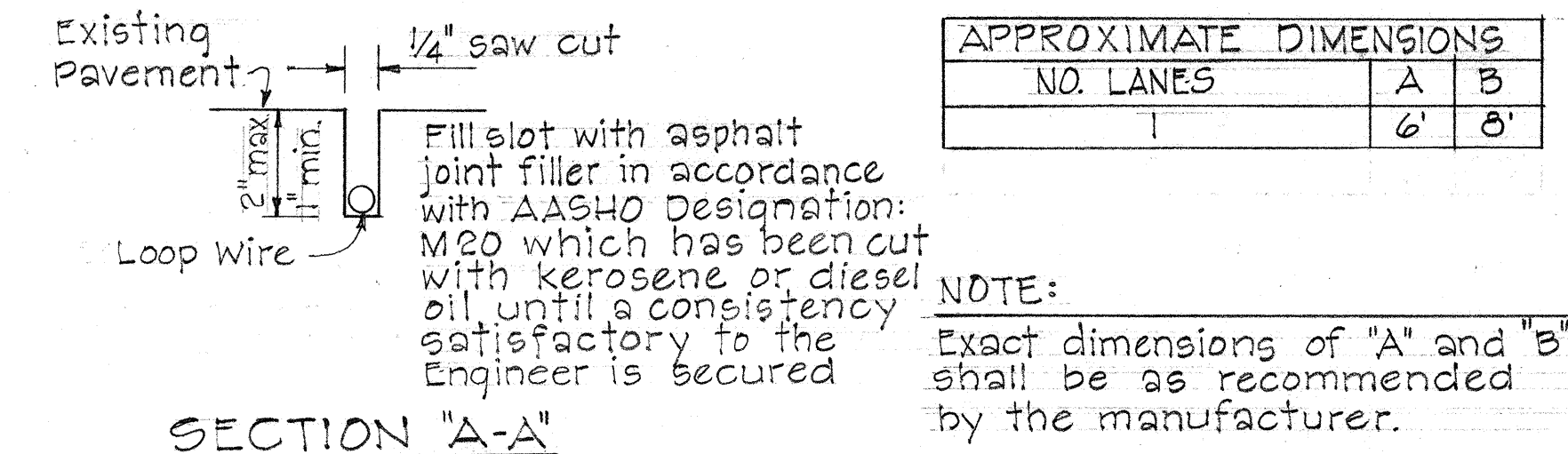
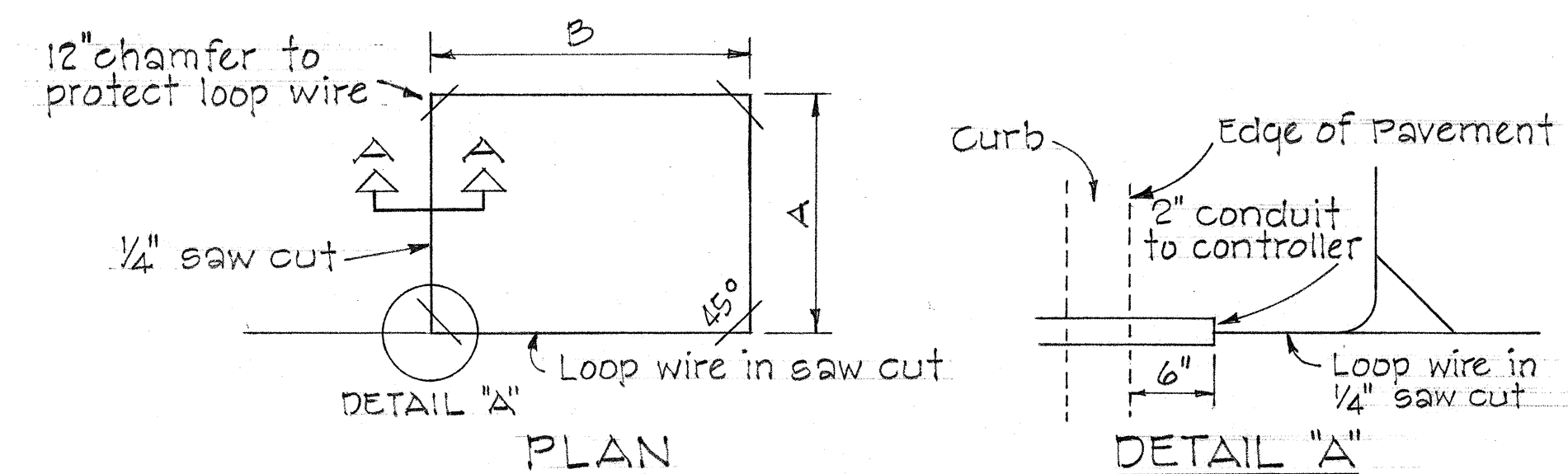
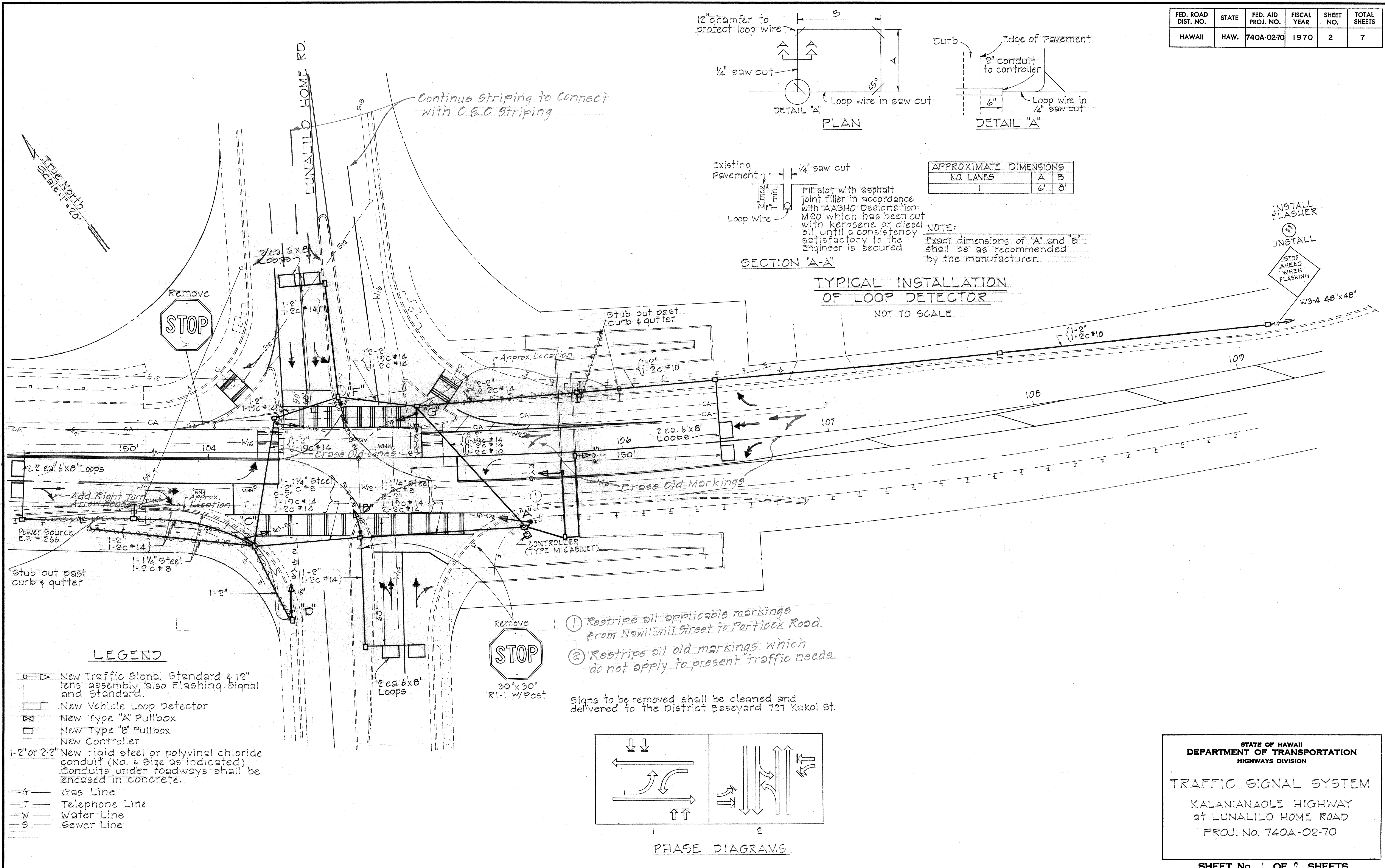


FED. ROAD DIST. NO.	STATE	FED. AID PROJ. NO.	FISCAL YEAR	SHEET NO.	TOTAL SHEETS
HAWAII	HAW.	740A-02-70	1970	2	7



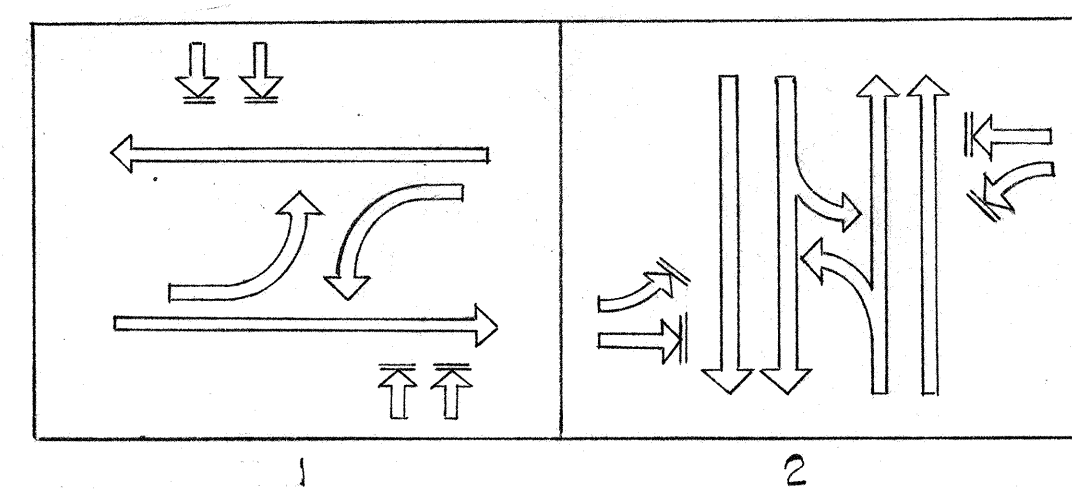
NO. LANES	A	B
1	6'	8'



LEGEND

- ➔ New Traffic Signal Standard 12" lens assembly also Flashing Signal and Standard.
- ▭ New Vehicle Loop Detector
- ⊠ New Type "A" Pullbox
- New Type "B" Pullbox
- New Controller
- 1-2" or 2-2" New rigid steel or polyvinyl chloride conduit (No. & Size as indicated) Conduits under roadways shall be encased in concrete.
- G — Gas Line
- T — Telephone Line
- W — Water Line
- S — Sewer Line

- Restripe all applicable markings from Nawiliwili Street to Portlock Road.
 - Restripe all old markings which do not apply to present traffic needs.
- Signs to be removed shall be cleaned and delivered to the District Baseyard 727 Koko St.



STATE OF HAWAII
DEPARTMENT OF TRANSPORTATION
HIGHWAYS DIVISION

TRAFFIC SIGNAL SYSTEM
KALANIANA'OLE HIGHWAY
at LUNALILO HOME ROAD
PROJ. No. 740A-02-70